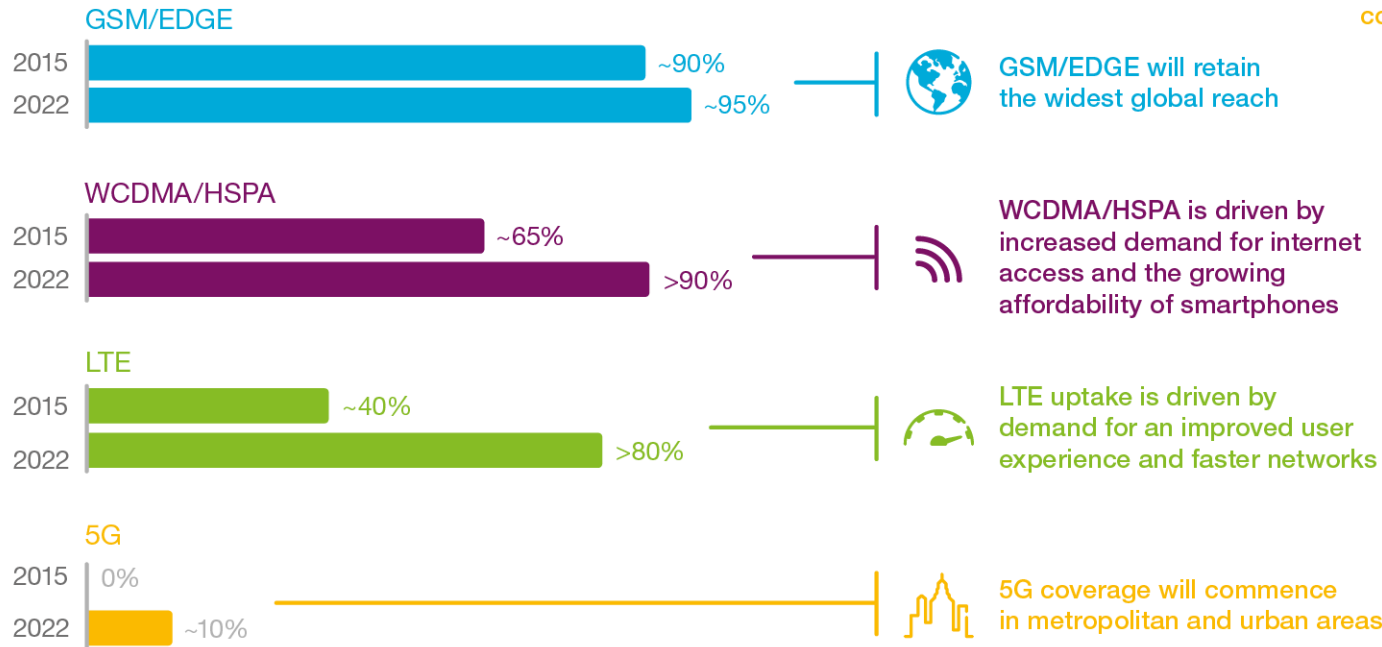


5G ESTIMATED TO REACH 10% POPULATION COVERAGE IN 2022



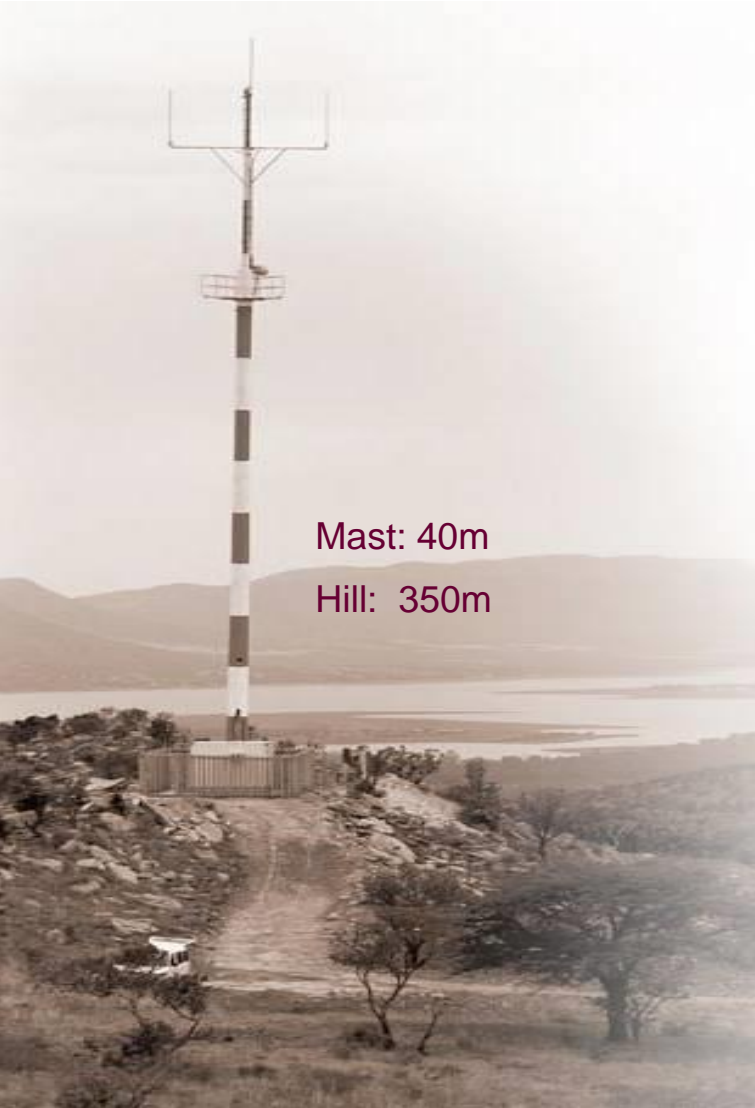
World population coverage by technology¹

By 2022, around 10% of the world's population will be covered by 5G networks



¹ The figures refer to population coverage of each technology. The ability to utilize the technology is subject to factors such as access to devices and subscriptions

INNOVATION: WORLD'S FIRST 200KM CELL



Mast: 40m

Hill: 350m

Oct 2006 – *Launch in more than 1,000 cells*

Nov 2006 – *Field measurement*

- › 2.3 Mbps DL, 384 kbps UL at 200 km range
- › Voice call held until 286 km (AMR 7.95)
- › Soft HO verified

