



**Workshop “Accessible Digital Content and Remediation for the
Stakeholders delivering digital financial services”
October 16th, 17th and 18th
Cairo, Egypt**

Session X: Web Content Accessibility Guidelines

***Monica DUHEM
ITU Consultant***

Email. monica@hearcolors.com.mx



WEB CONTENT ACCESSIBILITY GUIDELINES (WCAG2.0)

Requirement:

All the images that transmit content must have an adequate alternative text that fulfills its purpose.
(Level A)



```

```

```

```



WEB CONTENT ACCESSIBILITY GUIDELINES (WCAG2.0)

Requirement:

All the linked images or links must have an adequate descriptive text. (Level A)



```
<a href="http://hearcolors.com.mx">  
  
</a>
```



WEB CONTENT ACCESSIBILITY GUIDELINES (WCAG2.0)

Requirement:

The elements of data entry forms must have associated text labels (label). (Level A)

```
<label for="name">Name:</label>
```

```
<input type="text" id="name"  
class="form-control"/>
```

```
<label for="address">Address:</label>
```

```
<textarea id="address" rows="2"  
cols="20" class="form-  
control"></textarea>
```

Please complete the form below. Mandatory fields marked *

Delivery Details

Name *

Address *

Town/City

County *

Postcode *

Is this address also your invoice address? *

☐ Yes

☐ No



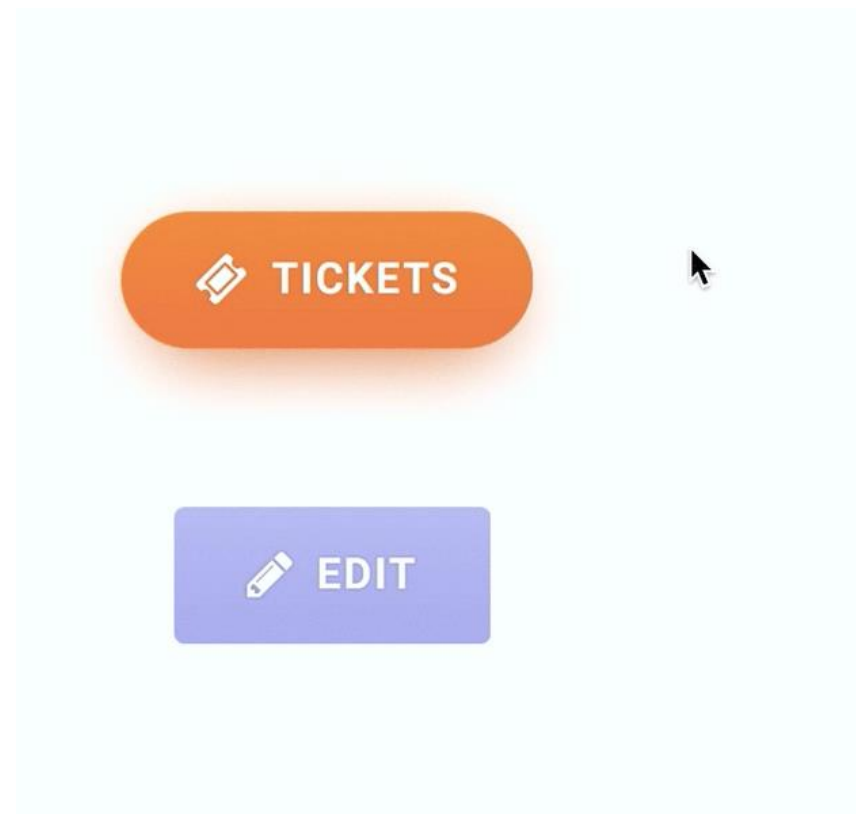
WEB CONTENT ACCESSIBILITY GUIDELINES (WCAG2.0)

Requirement:

The buttons of the forms will have descriptive names (value). (Level A)

```
<input type="submit" value="Tickets"  
class="btnexam btn-primaryexam">
```

```
<input type="image" src="img/search-  
148820_640.png" alt="EDIT">
```





WEB CONTENT ACCESSIBILITY GUIDELINES (WCAG2.0)

Requirement:

The user must be able to move through all the navigable elements (in logical and intuitive order) and perform all the functionalities of the page using the keyboard. (Level A)

[→ Home](#)

[About](#)

[Research and Development](#)

[Resources](#)

[Education](#)

[Standards and Policy](#)

[Services](#)

[Search](#)

[Go](#)

Welcome to the IDRC

The IDRC is a research and development centre at OCAD University where an international community of open source developers, designers, researchers, advocates, and volunteers work together to ensure that emerging information technology and practices are designed inclusively. [Learn more about the IDRC.](#)

The Three Dimensions of Inclusive Design

The Inclusive Design Research Centre and the MDes in Inclusive Design are working to better define and update what is meant by “Inclusive Design”. This is more challenging than you think as the practice has flexibility and adaptation at its core. Any criteria, principles or guidelines cannot be absolute but need to be relative to the user, the context, and the goal. We have even considered creating an inclusively designed definition that is presented in a flexible way depending on your particular perspective. We have landed on [three dimensions that best explain the practice and principles of inclusive design.](#)

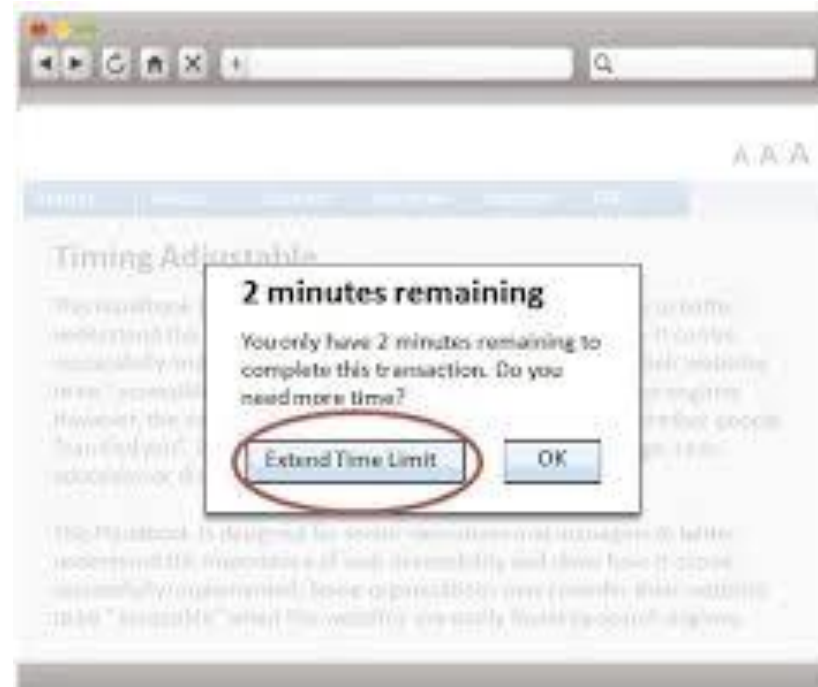
[Example](#)



WEB CONTENT ACCESSIBILITY GUIDELINES (WCAG2.0)

Requirement:

If a page has a time limit to perform a task, it must be able to be turned off, adjusted or extended. For cases of real time and absolutely necessary, the user must be informed about the time limit and remaining time to carry out the activity. (Level A)

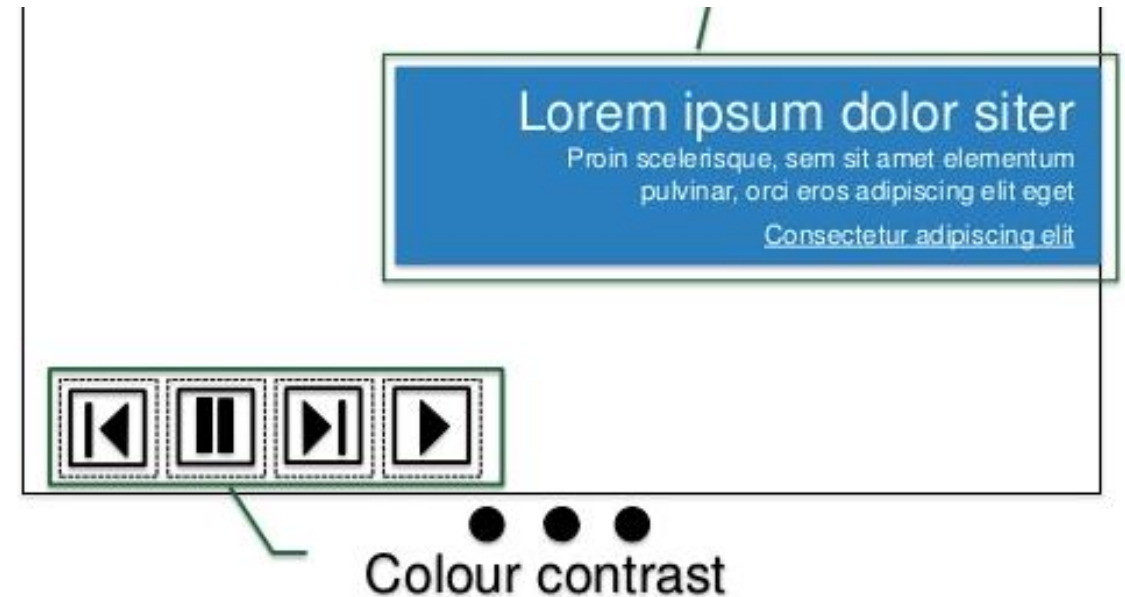
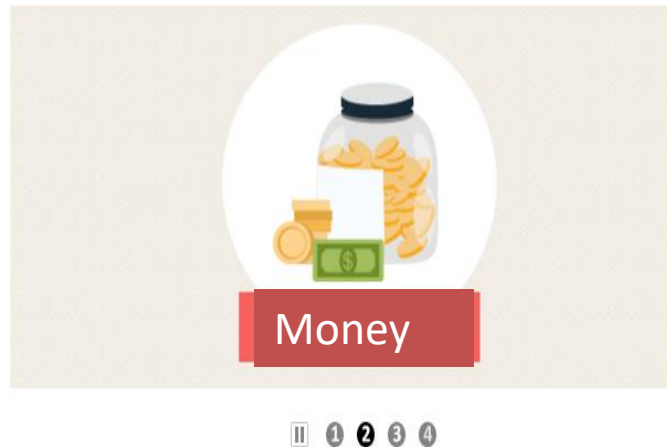




WEB CONTENT ACCESSIBILITY GUIDELINES (WCAG2.0)

Requirement:

Any content in movement, flickering or automatic movement of more than five seconds and that is presented in parallel to other content should be able to pause, stop or hide by the user. (Level A)





WEB CONTENT ACCESSIBILITY GUIDELINES (WCAG2.0)

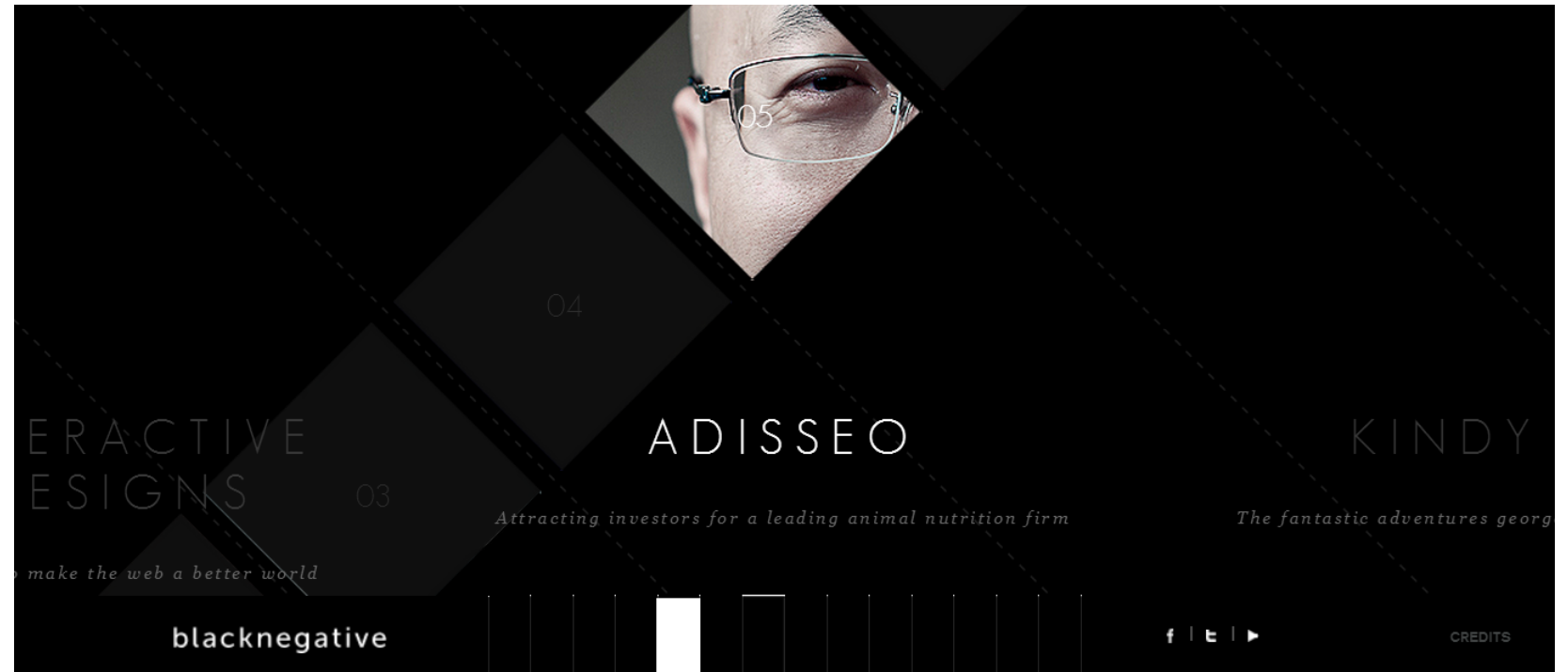




WEB CONTENT ACCESSIBILITY GUIDELINES (WCAG2.0)

Requirement:

Web content should not have movement while the user moves the mouse or cursor



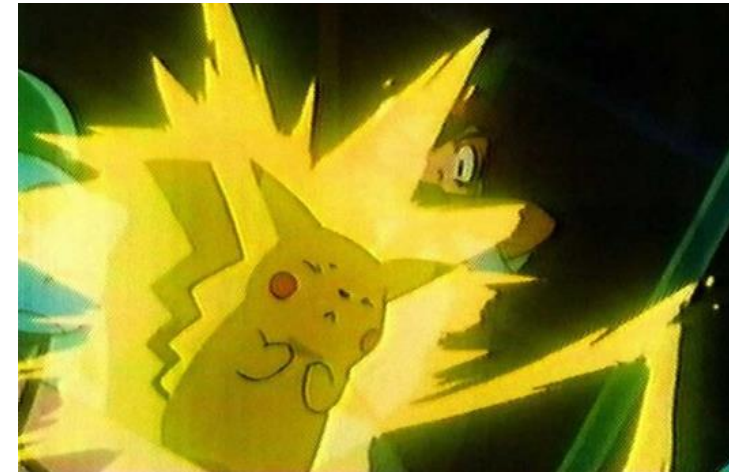
[Example](#)



WEB CONTENT ACCESSIBILITY GUIDELINES (WCAG2.0)

Requirement:

You should not create content that flashes (with high contrast and red) more than three times per second or the flash should be below the threshold. (Level A) Note: no flash is allowed on an AAA level





WEB CONTENT ACCESSIBILITY GUIDELINES (WCAG2.0)

Requirement:

The website should have an accessible and understandable site map. (Level A)

| Search Guides | Services | Tools | Help Centers |
|--|---|---|--|
| <ul style="list-style-type: none">• Basics of Search• Advanced Search• Search Results Page• Setting Preferences• Search Features• Services & Tools• Help Center | <ul style="list-style-type: none">• Alerts• Answers• Catalogs• Directory• Froogle• Groups• Google Apps• Images• Google Labs• Local | <ul style="list-style-type: none">• Maps• Mobile• News Search• Scholar• Special Searches• University Search• Web Search | |
| Corporate Overview | Investor Relations | Press Center | Hiring |
| <ul style="list-style-type: none">• Company• Features• Technology• Business• Culture• Quick profile• Address• Management• Milestones | <ul style="list-style-type: none">• Financial Info• Financial Data• News & Events• Investor FAQ• Code of Conduct• Guidelines• Board of Directors• Board Committees• Report Concerns | <ul style="list-style-type: none">• Media Resources• News from Google• Images and B-roll• Awards• Permissions• Product Descriptions• Reviewer's Guides• Software Principles• Milestones | <ul style="list-style-type: none">• U.S. Jobs• International Jobs• Benefits• Students• Culture• Engineer's Life |



WEB CONTENT ACCESSIBILITY GUIDELINES (WCAG2.0)

Requirement:

The web page must have a descriptive title of it. (Level A)

`<title>MyGreekDish</title>`

