

Accessible Americas II: Information and Communication for **ALL**

Medellin, Colombia, from 4 to 6 November 2015

GENERAL INFORMATION

Welcome to Colombia! Located in the North-West of South America, Colombia is the only nation in the region with both Atlantic (Caribbean) and Pacific Ocean coastlines. It is the fourth country in territorial expansion and the third in population in Latin America: around 45 million inhabitants. It is renowned worldwide for the production of mild coffee, flowers, emeralds, coal and oil, for its cultural diversity and for being the second richest country in the world's biodiversity and one of the main economic centers of the Spanish-speaking America. People in Colombia speak Spanish (official language) and numerous indigenous languages¹.

HOST CITY



Medellín, a privileged city², capital of the Antioquia Department, will host **Accessible Americas II: information and communication for ALL**. Industrial and commercial capital, the fashion center and place of eternal spring, Medellín is the second largest city of Colombia.

It is the only city in the country that has the privilege of being surrounded by mountain ranges that remain green throughout the year, with a variety of flowers and fruit trees, birds and animal species.

Museums, theatres, concerts, galleries, a botanical garden, two airports, one of the main stadiums of the country and the first transportation system metro in Colombia, Medellín, a place to really have a great experience.

In addition to its tourist attractions, the city is today a business center, recognized as the Colombian capital of fashion with great tradition in textile and clothing.

Medellin has a pleasant climate that is around 24° C; modern systems of transport such as the subway and overhead cable car and its efficient infrastructure has allowed it to host events of global structure like the OAS and IDB Assemblies.

From the mountains that surround the capital of Antioquia one can observe how the Medellín River runs parallel to the subway, which connects various parts of the city, where there are many parks, libraries, museums and public spaces where several cultural events take place. That's where the Flowers Fair happens and visits can be made to outlying villages where life is simple, as well as to natural reserves and relaxing landscapes.

The textile tradition of Medellín and the existence of modern malls, featuring spacious shops and stores specializing in footwear and accessories make this city a great destination for shopping

¹ http://www.exteriores.gob.es/Documents/FichasPais/colombia_FICHA%20PAIS.pdf

² <http://www.colombia.travel/es>

enthusiasts. In addition, thanks to the realization of events such as Americas Colmbiatex and Colombiamoda, the city is focus for trends in South America.

The city is remarkably known as one of the main cultural centers of Colombia. It is the venue of important festivals with wide experience and local, national and internationally recognized. Medellin is also characterized by its numerous academic and scientific activities that have earned the city to be recognized as a university and knowledge city, and considering that it also hosts some of the most important Colombian universities.



TIME IN MEDELLIN

Local time: GMT - 05:00

INTERESTING DATA ON THE COUNTRY AND CITY.

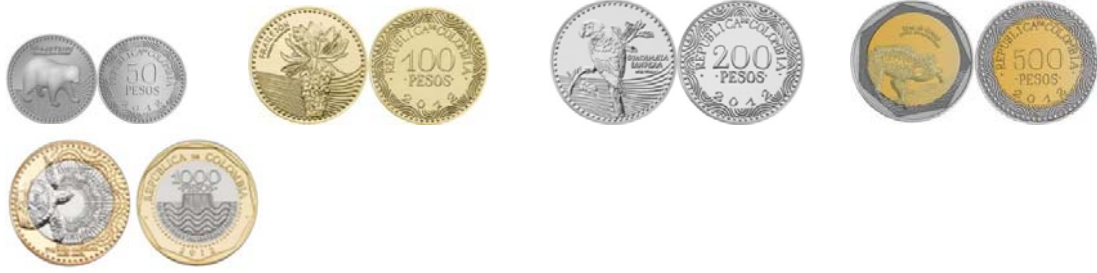
- Height: 1.538 m.s.n.m.
- Climate: Oscila entre 18° y 28° C / 64° F a 82,4° F.
- Time-zone: GMT-5, todo el año.
- Calling codes: + 57 (4).
- Medical Service: emergency line: 123.
- Visa: Please consult [official list](#) provided by the Ministry of External Relations to learn on nationalities which require visa to enter Colombia.
- Outlet and voltage: 110 V / 60 Hz. In some cases the use of adapters are necessary.



- Currency: Colombian Peso
Exchange rate (approx.): 1 dollar = \$2.438 – 15/01/2015



New coins



Paper money



VENUE

- Hotel San Fernando Plaza

Hotel San Fernando Plaza



Cra. 42A #1-15

Tel. +57-4-4445353 Ext.319

E-mail: ventas1@hotelsanfernandoplaza.com

- Single Room US\$90
- Suite US\$120
- Gran Suite US\$200

Additional person US\$27

Distance from Airport – 50 min by car

OTHER SUGGESTED HOTELS

Medellin is frequently chosen as a city for tourism and business, so we remind you to make early reservations to ensure tariff and to avoid problems. The reservation code to access the preferential rate of the event for all the suggested hotels is: **América Accesible II**. Keep in mind that exchange rate may vary at the time of your booking. See the exchange rate of the day at Bank of the Colombian Republic. The costs presented below include the hotel insurance and tax (VAT 16%)

Hotel InterContinental



CALLE 16 #28-51

Tel. +57-4-3194450 +1106

E-mail: reservas@movichhotels.com,

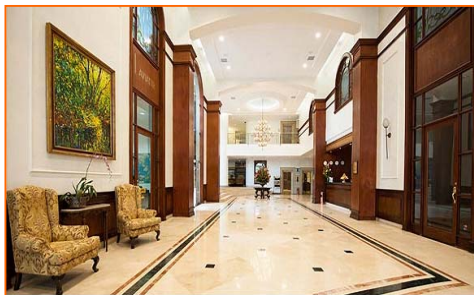
Eliana.rojo@movichhotels.com

- Single Room US\$138
- Double Room US\$170
- Junior Suite US\$196
- Suite US\$237

Distance from airport – 40 min by car

Distance from Venue –10 minutes

Hotel Dann



Cra. 43 a No. 7-50 Avenida El Poblado.

Tel. +57-4- 444-5151

E-mail: ventas3@danncarlton.com

Single Room US\$110

Junior Suite US\$158

Suite US\$255

Additional Person US\$42

Distance from airport – 50 min by car

Distance from venue – 10 minutos

Hotel Nutibara



Cra. 31 No. 16 -221.

Tel. +57-4- 3120200

E-mail: ventasps2@hotelnutibara.com

Single Room US\$72

Double Room US\$90

Triple Room US\$131

Distance from airport – 40 min by car

Distance from venue – 5 minutos by car

Prices were confirmed on 20 August 2015 and may vary until the date of the Event. Participants are recommended to make reservations directly with the hotel of their choice as soon as possible to ensure the informed tariffs – participants that intend to book room at the hotel of the venue are requested to use the hotel reservation form available in the webpage of the event (<http://www.itu.int/en/ITU-D/Regional-Presence/Americas/Pages/EVENTS/2015/1104-CO-2ndAcce.aspx>). All participants are to observe cancellation policy of the selected hotel when receiving booking confirmation as to avoid cancellation charges. Each participant will settle expenses directly with the hotel at the end of their stay.

Please send a copy of your booking confirmation to:

E-mail: itu-ro-americastrainings@itu.int

OTHER INFORMATION OF INTEREST

A. TRANSFERS AND TRANSPORTATION

The **international airport José María Córdova** also known as Rionegro airport, is located in the municipality of Rionegro, which serves the city of Medellín and its metropolitan area. This airport is the largest in the Department of Antioquia and is the second in the country in terms of infrastructure. The airport is about 45 minutes away from the city and the venue.

The **Olaya Herrera airport**, located in the South-West of the city of Medellín, serves regional and national flights. Due to the large number of regular and charter flights of this type operated to and from this airport it is currently considered the main regional airport of the country.

Taking a taxi from the airport costs 60,000COP (around USD20) and travel is about 50 minutes long. Another option is to use the bus service which costs 9,000COP (around USD3) per person and travel is 1 hour and a half long. The San Fernando Plaza Hotel also offers transportation service at 70,000COP (around USD 24). Participants should contact the hotel directly in order to ask for this service.

Within the city the distances are short, around 15-20 minute equidistant from and to anywhere. The city offers the yellow cab, which has a large fleet of cars but any taxi can take you to your destination - it is recommended to call them by phone or at the hotel. In the back of the co-pilot Chair, the taxis bring a sign with the plates of vehicle and driver identification, as well as a table of prices for payment calculated by units corresponding to the distance traveled. There is an additional charge for night services, Sundays and public holidays.

Another option is the subway, a mass transit system of large capacity flowing through the Metropolitan Area of Medellín from South to North, from North to Northeast of the center of the city to the West, and West to Northwest. There are two lines and commercial services from Monday to Saturday, between 4:30 a.m. and 11:00 at night. Please consult [map and tariffs](#).

It is recommended to pay in local currency for the service, so it is advisable to change foreign currency to pesos at the hotel, a bank or a currency exchange office.

For more information about the airports, see the airplan - operator of airports North Central website: <http://www.airplan.aero/>

Enrique Olaya Herrera Airport Medellin
Carrera 66B, Medellín, Antioquia Working hours: 24 horas Tel.: +57 4 5765000
Distance to venue: 3,7 km



B. COMMERCIAL HOURS

- Government: 9:00am to noon and 2:00 to 5:00pm, Monday through Friday.
- Stores: the opening hours of the majority of the stores are from 9:00am to 7:00pm from Monday to Saturday with a break for lunch at noon and close on Sundays.
- Banks: from 9:00am to 3:00pm, Monday through Fridays, and from 9:00am to noon on Saturdays.

C. TIPS

The restaurants and bars are obliged to ask if you want to include the tip before issuing your bill for a suggested percentage of 10% which you can accept, reject or modify, this contribution is voluntary. It is usual to tip doormen, porters and ushers of shows.

D. CLIMATE³

Latitude and altitude of Medellin result in a subtropical monsoon climate. The climate is mild and humid, with an average temperature of 22° C. The nickname "city of eternal spring" comes from the fame of a fairly uniform climate throughout the year, with few variations of temperature between December and January, and between June and July, more dry and warm year season

During this period the sky is pretty often cloudy. Although there are a few foggy days (25%), and some electrical storm (15%), seldom there are partially clear days. Temperatures are fairly stable, the day is usually quite warm and it can reach temperatures around 28-29°C. The nights are a little cold, down to 11-12°C. The temperature range, i.e. the difference in temperature between the day and night, is very resilient (16-17°C). At the beginning of November in 70% of cases there is no wind. Sometimes a very weak Breeze (or more rarely moderate Breeze) makes a more pleasant climate.

E. ELECTRIC POWER

Throughout the national territory electricity is 110-volt AC 60 Hz (110V AC, 60 Hz). Industrial installations or for specific uses is 220 volt AC 60 Hz (220V AC, 60 Hz). It is easy to get power adapters and voltage regulators on the market, however it is always advisable to review the technical indications of appliances intended for use in Colombia.

The electrical connectors or plugs used in Colombia are of American type, with two flat pins (plug type A) or with a third round pin (plug type B). It is possible to find adapters for these outlets in the market, especially for devices with European plugs (plug type C or Europlug), however for other types of connectors it is necessary to go to specialized shops in electricity.



F. ADDITIONAL INFORMATION ON VISA⁴

Depending on your nationality entry visa to Colombia may be required by national authorities.

Entry visa to Colombia is required, except for nationals of the following countries which will stay up to a maximum of 90 days in Colombian territory, exclusively for tourist purposes: Germany, Andorra, Antigua and Barbuda, Argentina, Australia, Austria, Azerbaijan, Bahamas, Barbados, Belgium, Belize, Bolivia, Brazil, Brunei Darussalam, Bulgaria, Bhutan, Canada, Czech Republic, Chile, Cyprus, Korea (Republic of), Costa Rica, Croatia, Denmark, Dominica, Dominican Republic, Ecuador, El Salvador, United Arab Emirates, Slovakia, Slovenia, Spain, United States of America, Estonia, Fiji, Philippines, Finland, France, Georgia, Greece, Grenada, Guatemala, Guyana, Honduras, Hungary, Indonesia, Ireland, Iceland, Marchall Islands, Solomon Islands, Israel, Italy, Jamaica, Japan, Kazakhstan, Latvia, Liechtenstein, Lithuania, Luxembourg, Malaysia, Malta, Mexico, Micronesia, Monaco, Norway, New Zealand, Netherlands, Palau, Panama, Papua New Guinea, Paraguay, Peru, Poland, Portugal, United

³ <http://www.climaenelmundo.com/colombia/clima-medellin-noviembre-106>

⁴ <http://www.colombia.travel/es/informacion-practica/visas>

Kingdom of Great Britain and North Ireland, Romania, Russia (Federation of), Saint Kitts and Nevis, Samoa, San Marino, Saint Lucia, Holy See, Saint Vincent and the Grenadines, Singapore, South Africa, Sweden, Switzerland, Suriname, Trinidad and Tobago, Turkey, Uruguay and Venezuela.

Participants are strongly advised to seek information on requirements applicable in their case from Colombian embassies or consular missions in their home countries. Where a visa is required, applicants are strongly advised to apply as early as possible.

For more information please visit:

http://www.cancilleria.gov.co/tramites_servicios/visas

Please consult the link [Cancillería](#) for the countries that are required to have entry visa to Colombia.