

ITU REGIONAL DEVELOPMENT FORUM

ITURDF

AFRICA REGION

ADDIS ABABA 2023

3-5 October

Addis Ababa, Ethiopia



#ITURDF

itu.int/go/RDF-AFR-23

Follow us at @ITUAfrica



#ICT4SDG



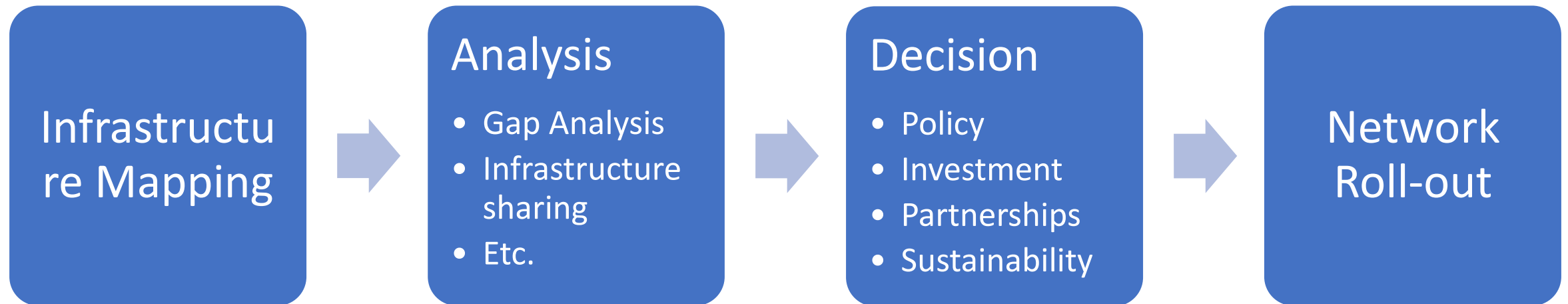
Organized by



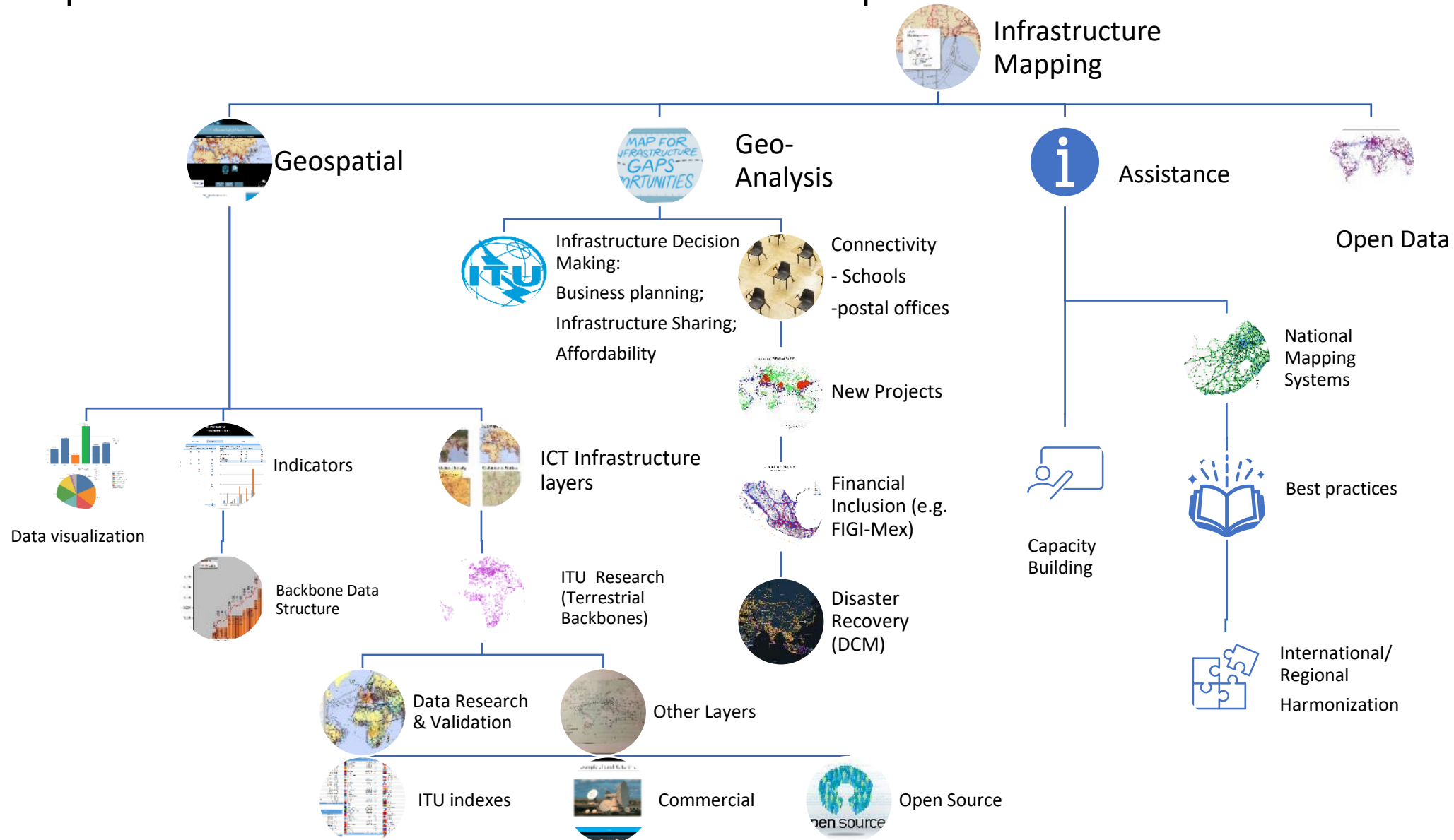


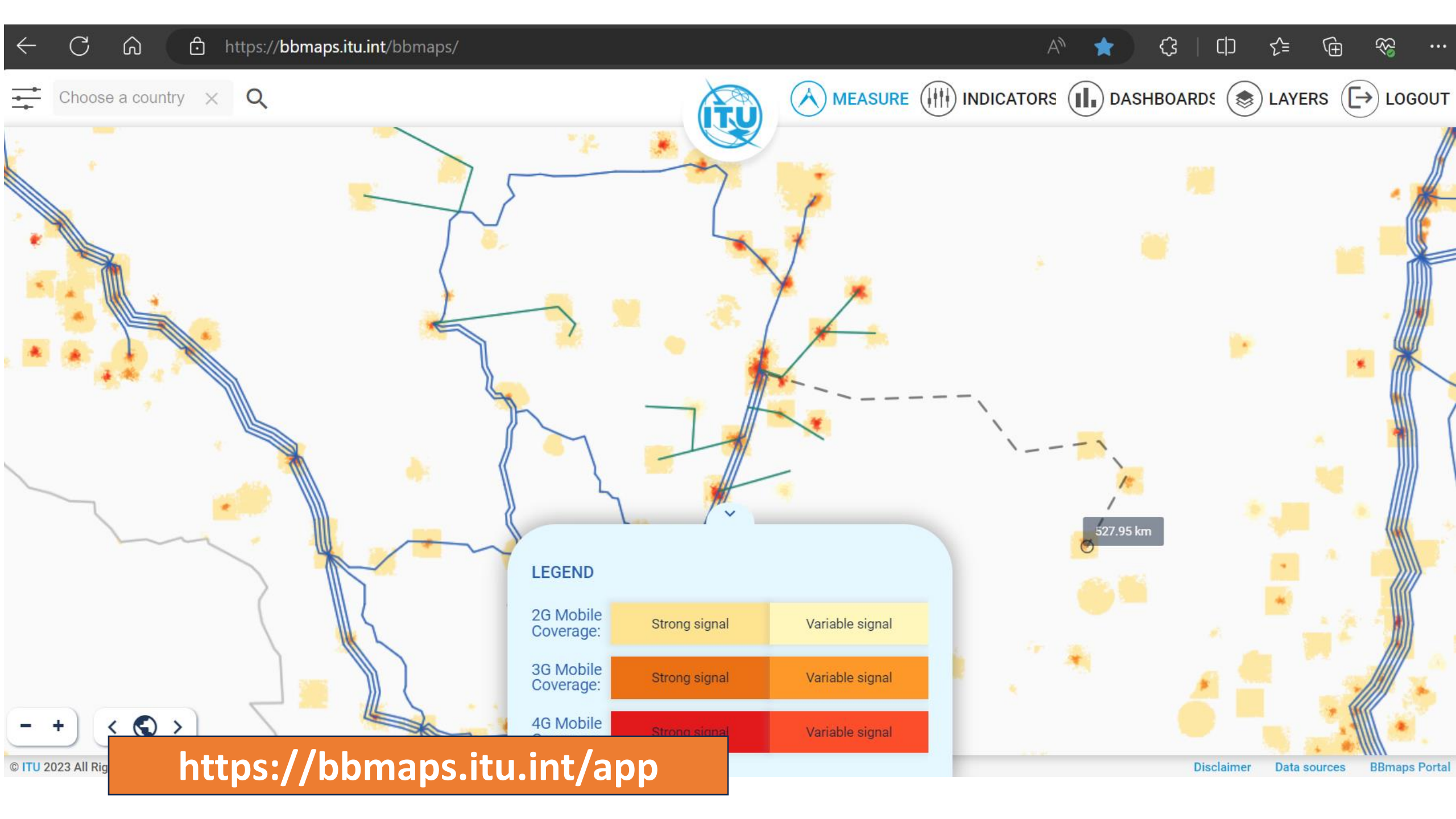
ITU-D Prioritis

Affordable connectivity



Geospatial ICT Infrastructure 4 Development





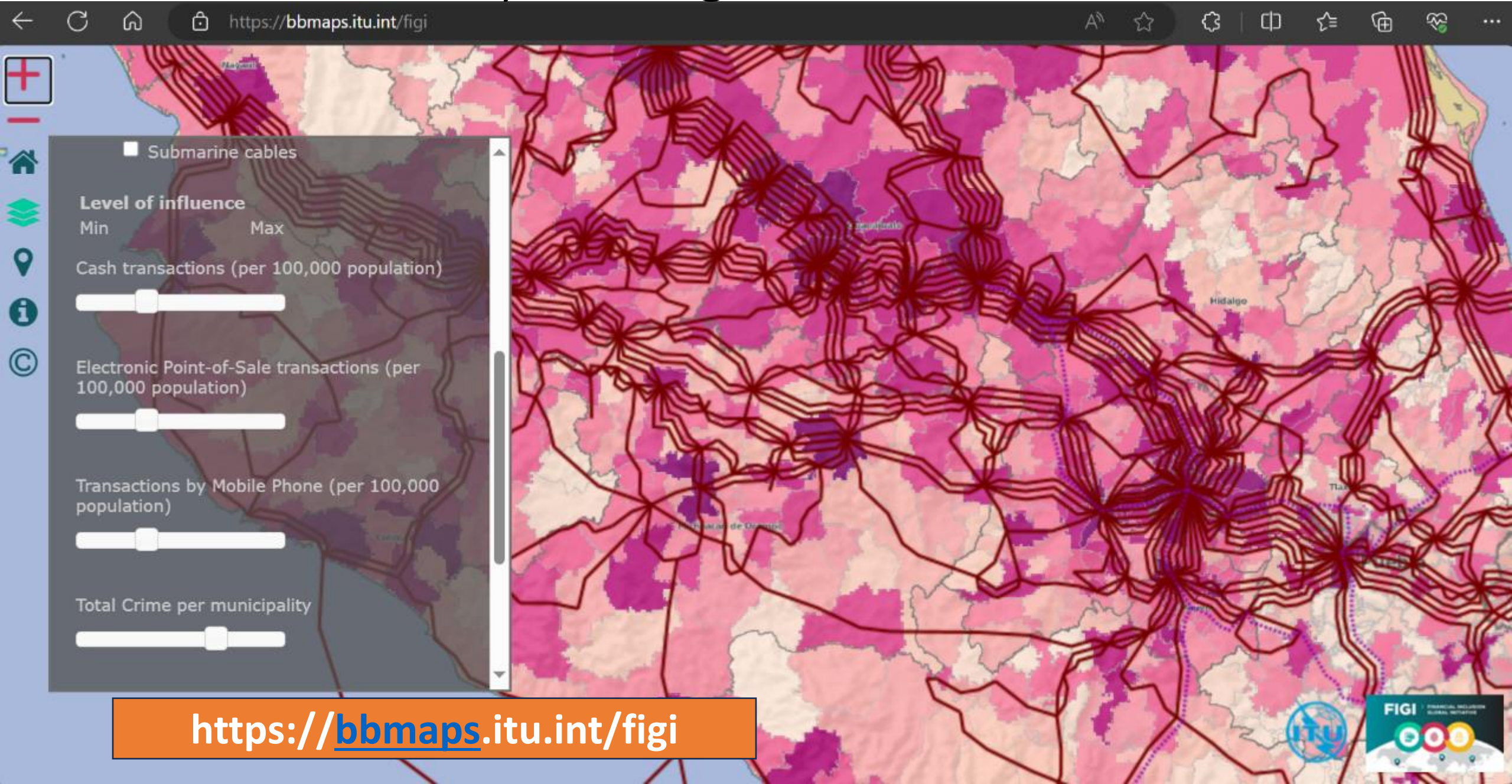
<https://bbmaps.itu.int/app>

Infrastructure Analysis –School Connectivity




www.itu.int/go/schoolmap


Infrastructure Analysis – Digital Finance




Infrastructure and broadband mapping for informed decision-making

ITU Academy – New certified online training on the introduction to broadband mapping




Home | About | Partners | Training courses | ITU-D Capacity Development | 



Home > Training courses > Full catalogue of courses > Introduction to Broadband Mapping

Training overview

Full catalogue 

By date

By registration method

By training type

By topic

By region

By language

By course level

REGISTRATION

Start Date: 01 Jun 2023
End Date: 22 Dec 2023

EVENT DATES

Start Date: 01 Jun 2023
End Date: 31 Dec 2023

LOCATION

World or Multi-Regional

TRAINING TOPICS

Wireless and fixed broadband

TRAINING TYPE

Online self-paced

LANGUAGES

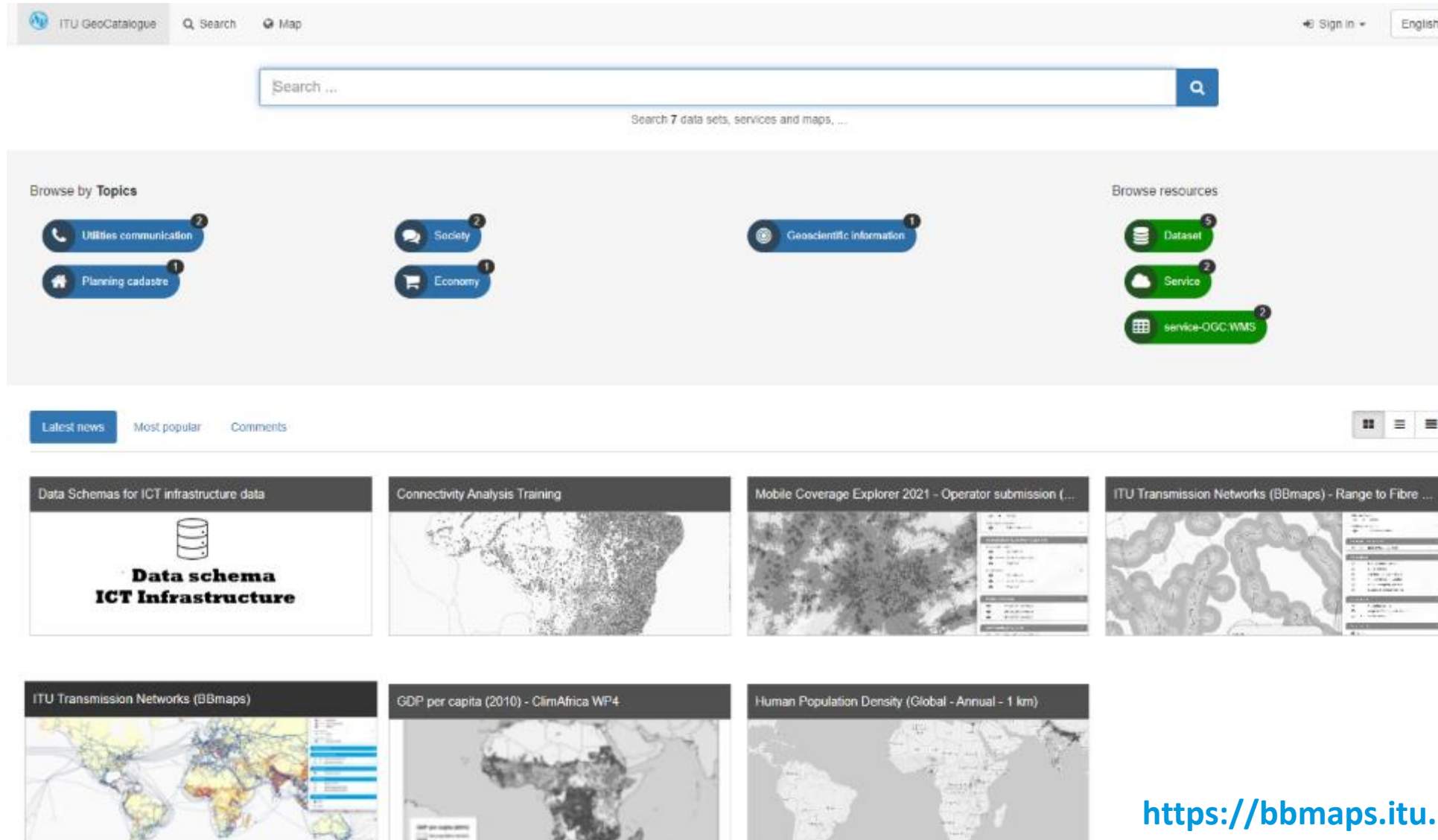
English

Price
\$0.00

ENROLL FOR
FREE

ITU academy course: Introduction to broadband mapping: [link](#)

ITU Geospatial Catalogue



The screenshot displays the ITU GeoCatalogue web interface. At the top, there is a navigation bar with the ITU GeoCatalogue logo, search and map icons, a sign-in link, and a language dropdown set to English. Below this is a large search bar with the placeholder text "Search ..." and a magnifying glass icon. A message below the search bar indicates "Search 7 data sets, services and maps, ...".

The main content area is divided into two sections: "Browse by Topics" and "Browse resources".

Browse by Topics: This section features five topic-based buttons, each with an icon and a count:

- Utilities communication (2)
- Planning cadastre (1)
- Society (2)
- Economy (1)
- Geoscientific information (1)

Browse resources: This section features three resource-based buttons, each with an icon and a count:

- Dataset (5)
- Service (2)
- service-OGC.WMS (2)

Below these sections is a horizontal navigation bar with tabs for "Latest news", "Most popular", and "Comments". To the right of these tabs are three icons representing different view or filter options.

The main content area displays a grid of six featured resources, each with a title, a thumbnail image, and a brief description:

- Data Schemas for ICT infrastructure data:** The thumbnail shows a database icon and the text "Data schema ICT Infrastructure".
- Connectivity Analysis Training:** The thumbnail shows a map of Africa with a network overlay.
- Mobile Coverage Explorer 2021 - Operator submission (...):** The thumbnail shows a map of Africa with a network overlay and a sidebar with filters.
- ITU Transmission Networks (BBmaps) - Range to Fibre ...:** The thumbnail shows a map of Africa with a network overlay and a sidebar with filters.
- ITU Transmission Networks (BBmaps):** The thumbnail shows a world map with a network overlay and a sidebar with filters.
- GDP per capita (2010) - ClimAfrica WP4:** The thumbnail shows a map of Africa with a network overlay.
- Human Population Density (Global - Annual - 1 km):** The thumbnail shows a world map with a network overlay.

<https://bbmaps.itu.int/geocatalogue>



Q & A