



The Novartis Foundation

# AI to Transform Health Systems

From being reactive to proactive, predictive and preventative

AI maturity in health self assessment tool - June 2021

# AI in Health matters

## Rapid urbanization

Increasing exposure to unhealthy lifestyles



## Triple disease burden

NCDs cause 70% of deaths



## Health worker shortage

In 50% of the countries



## Global healthcare spending

Double over next 20 years to USD 20 Tn.



## Emerging threats

COVID-19, climate change and pollution



## Insufficient health and care capacity

734 Mn. people lack access to health services





# The Novartis Foundation

## Advancing digital and data-led approaches to population health

We are a non profit foundation based in Switzerland.

Our initiatives aim to improve the health of low-income populations. They do this by transforming health systems from being reactive to proactive, predictive and preventative.



# The Novartis Foundation

## Reimagining urban population health

### Our objective



### Building blocks



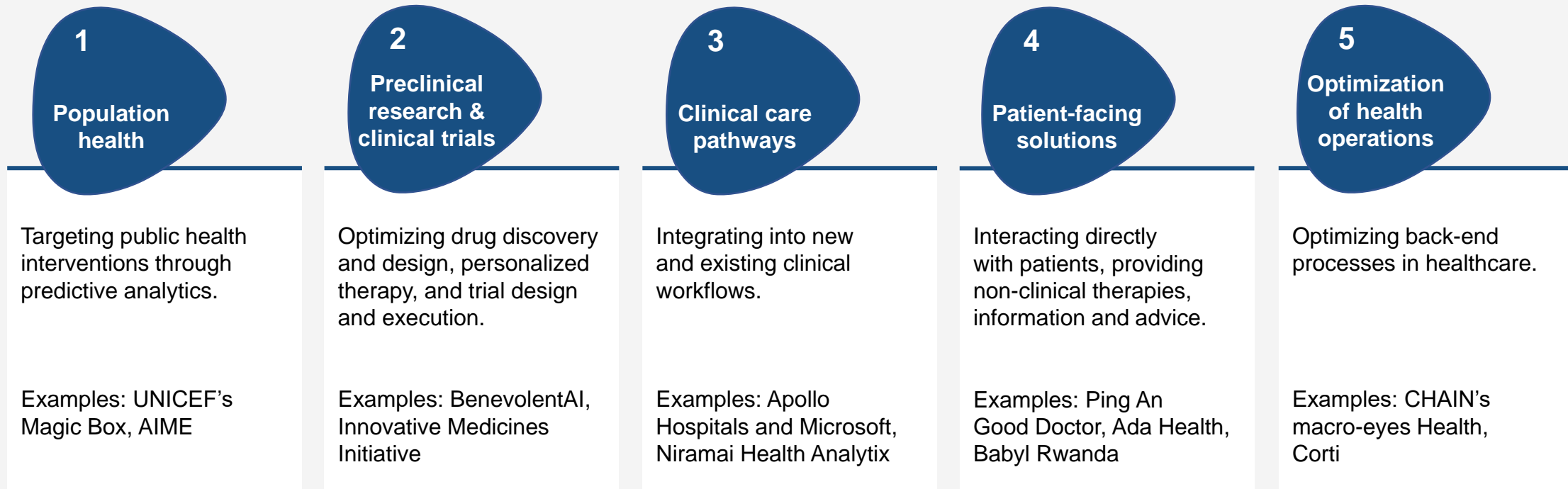
### How to achieve



# Today's top use cases for AI in Health

# AI is creating real-world impact in health today

Landscape mapping revealed five top use cases for AI in Health





# A six step maturity roadmap for AI in Health

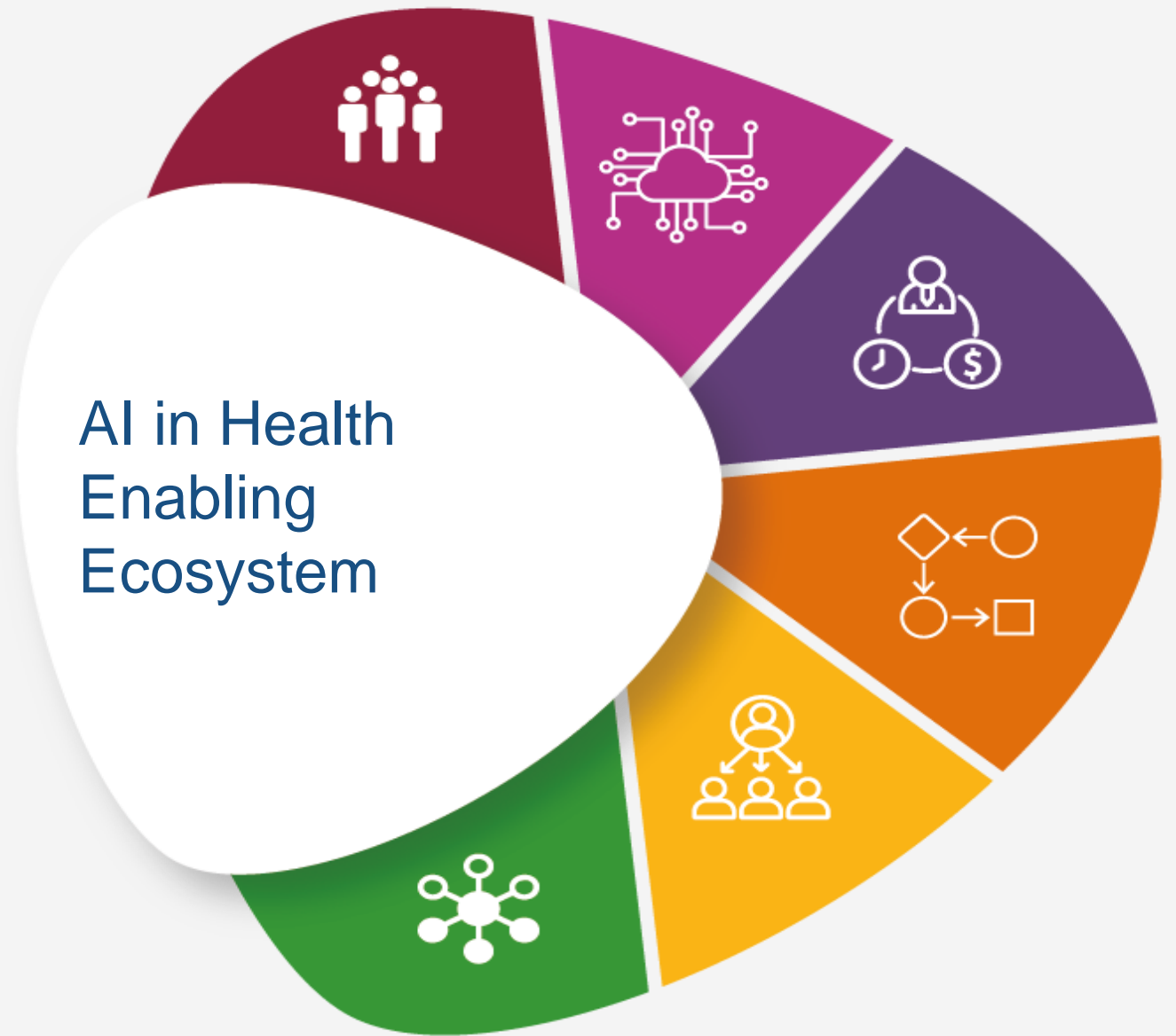


# A six-step maturity roadmap for AI in health

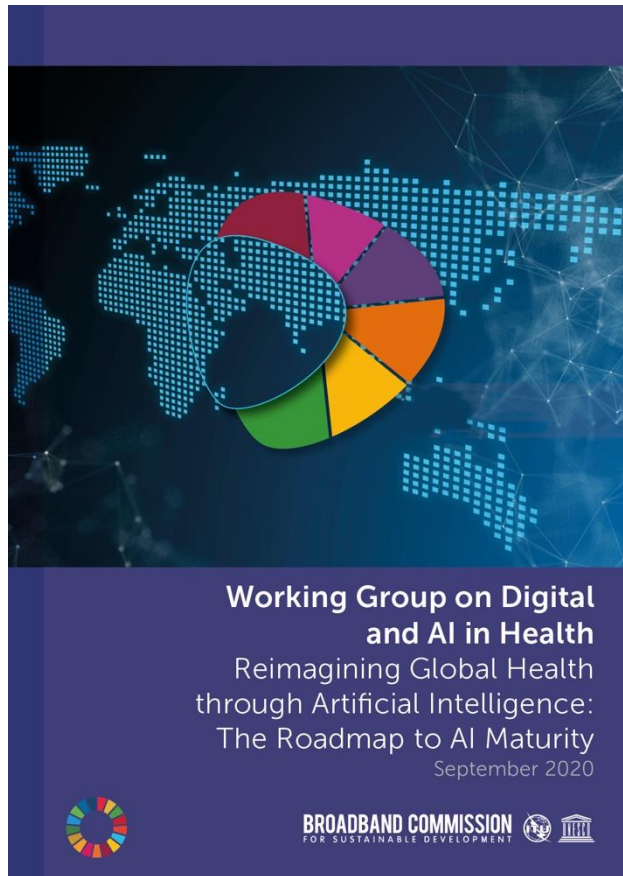




These six areas are equally important to create an enabling environment for integrating AI in health and care systems



# Broadband Commission Working Group on Digital and AI in Health



## Chairs



The Novartis  
Foundation



## Broadband Commissioners



FACEBOOK



verizon

5Rights  
FOUNDATION

GLOBAL  
PARTNERSHIPS



## External Experts

accenture



INSTITUT DE HAUTES  
ETUDES INTERNATIONALES  
ET DU DEVELOPPEMENT  
GRADUATE INSTITUTE  
OF INTERNATIONAL AND  
DEVELOPMENT STUDIES

BILL & MELINDA  
GATES foundation

COLUMBIA

MAILMAN SCHOOL  
OF PUBLIC HEALTH



FG-AI4H



The Novartis  
Foundation

# Recommendations now translated in a free AI maturity in Health self-assessment tool

The screenshot displays the 'Assessment Start' screen of the 'AI maturity in health' tool. It features a circular progress indicator with six segments: People & Workforce (red), Data & Technology (purple), AI & Analytics (blue), Digital & Data (orange), Health & Care (green), and Professional & On-the-job Training (yellow). The 'People & Workforce' segment is highlighted. The main content area shows a 'Welcome, Jane Doe' message and a 'Current Area: People & Workforce' status. Below this, a section titled 'Continuous learning for in-service training of health staff considers AI in health as...' is displayed, with a progress indicator showing 'Professional and on-the-job training 2/3'. Three options are listed: 'rarely part of continuous education curricula and even of technology-oriented learning opportunities', 'integrated in on-the-job training goals', and 'compulsory for most medical and health workers'. A 'Which area do you want to do next?' section is also visible, with a progress indicator showing 'Assessment progress'. The bottom of the screen includes a 'Back' button, a 'Skip to the next area' button, and a 'Choose an Area' button.

Assessment Start

Let's get started **Jane Doe!**

Click on an area to select or learn more

**People & Workforce**

This area focuses on education, training, on-the-job learning, and human factors. It revolves around the importance of strengthening capabilities and educational offerings at different levels. It includes professional training, social learning, and on-the-job training. Fundamentally, people & workforce is about human-centric design and behavior – dimensions that are often ignored in a tech-driven education.

Area Completion time: Around 12 mins.

Start the assessment

Back

Advancing digital and data-led approaches to population health

Welcome, **Jane Doe**

Current Area: **People & Workforce**

Professional and on-the-job training 2/3

**Continuous learning for in-service training of health staff considers AI in health as...**

Select all that apply

rarely part of continuous education curricula and even of technology-oriented learning opportunities

integrated in on-the-job training goals

compulsory for most medical and health workers

Assessment progress

**Which area do you want to do next?**

Pick an area or skip to the next one in order finish the assessment

Click on an area to select or learn more

**Data & technology**

This area focuses on technology, interoperability, algorithms, and models. It includes data ingestion, storage, consumption, data ownership sharing, and data validation. It also includes algorithm and model accuracy, training, and explainability, as well as standards and interoperability.

Back

Skip to the next area

Choose an Area

Available online at  
<https://AI.novartisfoundation.org/>



# AI maturity in Health self-assessment tool

- Freely online at [AI.novartisfoundation.org](https://ai.novartisfoundation.org)
- Available in English, French, Spanish and Portuguese
- For individual or collective use with your team
- Possibility to interrupt, pause and continue after every section
- Get actionable recommendations tailored to the stakeholder group you belong to
- Email the results to yourself or your colleagues
- Use the insights as a benchmark for future assessments after having implemented possible recommendations



**AI in health**  
Maturity assessment tool

# We have no time to loose ...



**AI can empower**

**Patients** to manage  
their own health

**Health providers**  
to deliver better health & care

**Health managers**  
to transform health systems

**Governments** to improve  
population health

# Thank you



@NovartisFDN



Novartis Foundation



Novartis Foundation



[www.novartisfoundation.org](http://www.novartisfoundation.org)

