

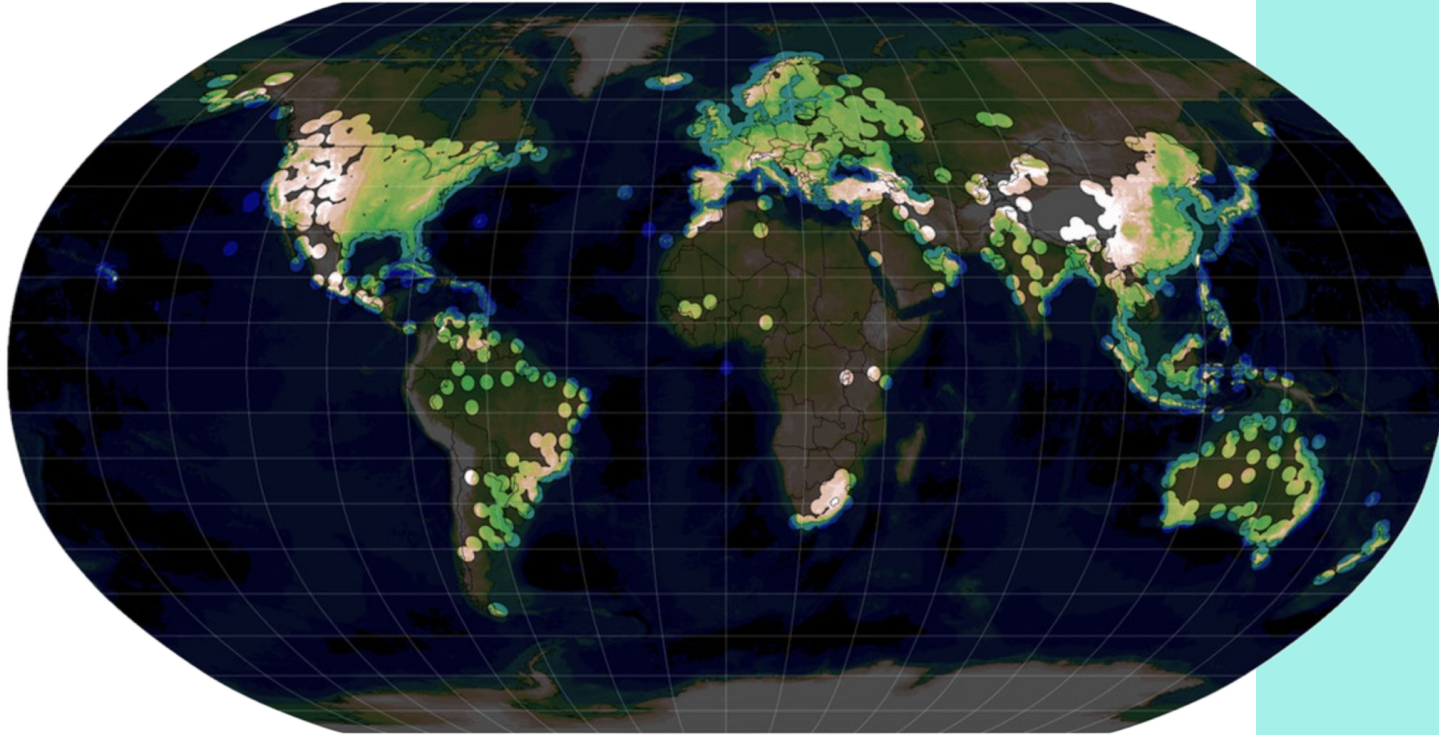


AI-Driven Early Warnings for All Hyper-local Storm Alerts for Climate-Vulnerable Communities

July 2025

99% of aid is reactive. Over half of disasters are predictable.

*ignitia enables anticipatory action by delivering hyper-local, AI-powered storm alerts
—without new hardware like radar networks.*

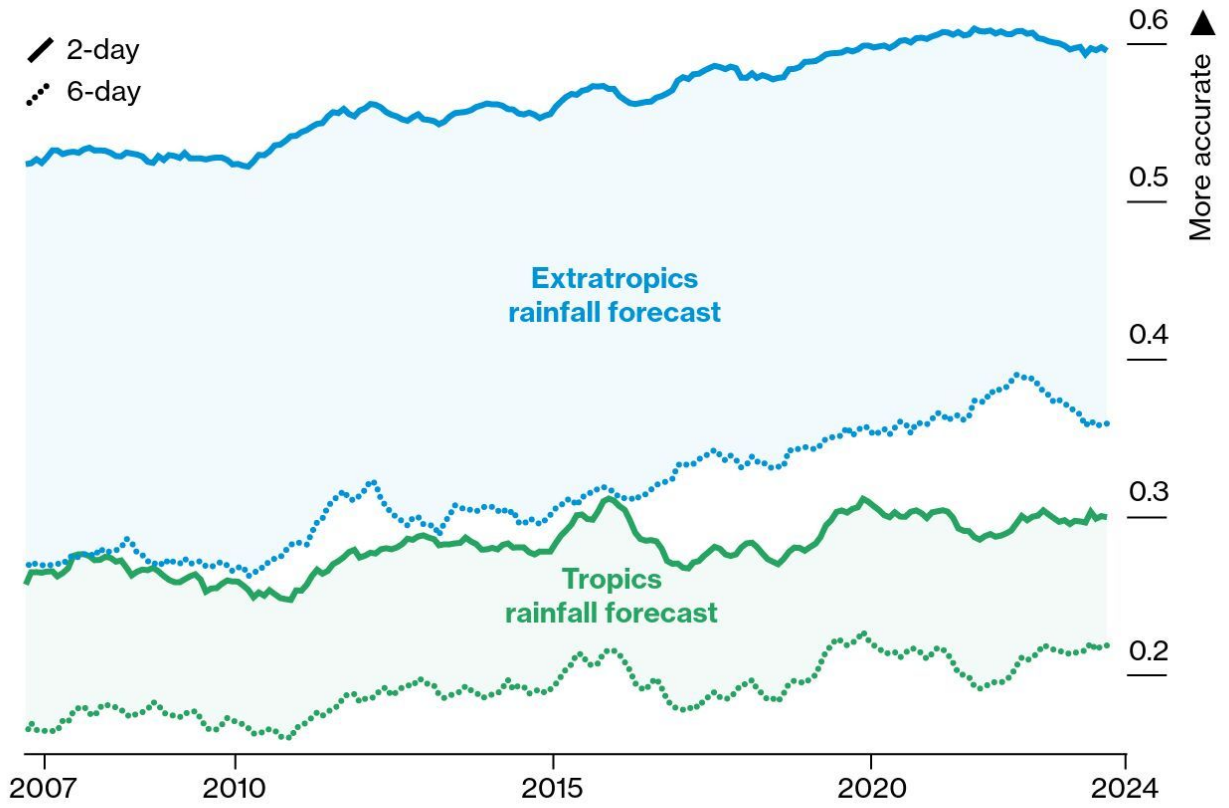


Sensors are concentrated in rich countries and climate change is making forecasting more challenging even in areas with sensor density

The observation gaps in early warning systems and the Global South

- Billions spent, but **vulnerable communities still lack timely warnings**
- **Radar infrastructure missing** in many high-risk areas
- **Alerts don't reach or resonate**—language, literacy, and trust barriers

Precipitation Predictions Are Worse in the Tropics
Rainfall forecasts are more accurate for regions further from the equator



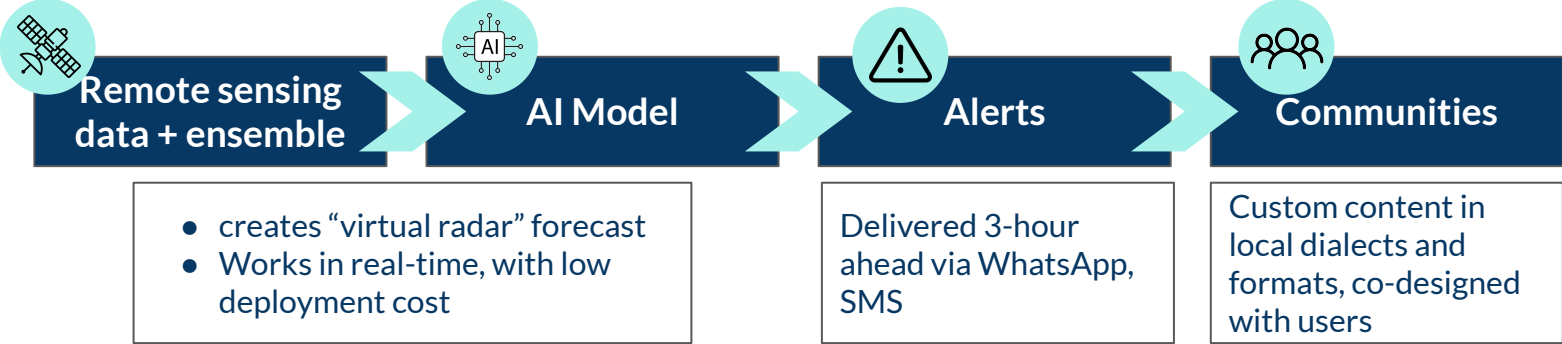
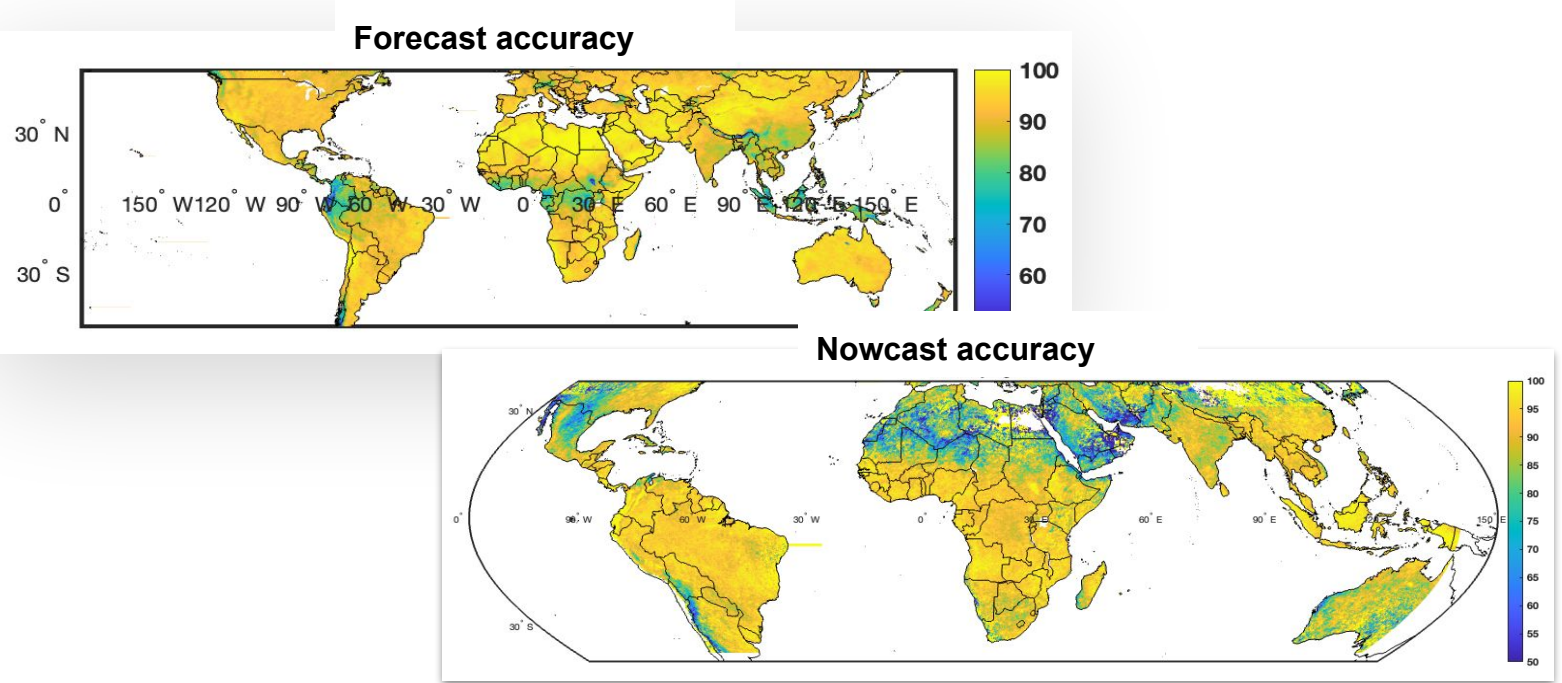
Source: European Centre for Medium-Range Weather Forecasts
Note: Values reflect the Stable Equity Error in Probability Space score (1-SEEPS), which assesses the performance of precipitation forecasts.
Bloomberg

Day 1 forecasts in the Tropics perform worse than day 6 forecasts in the Extratropics.
Source: Bloomberg, Mary Hui
<https://www.bloomberg.com/explainers/ai-weather-forecasts>

Global Model Rainfall Forecast Accuracy Gaps

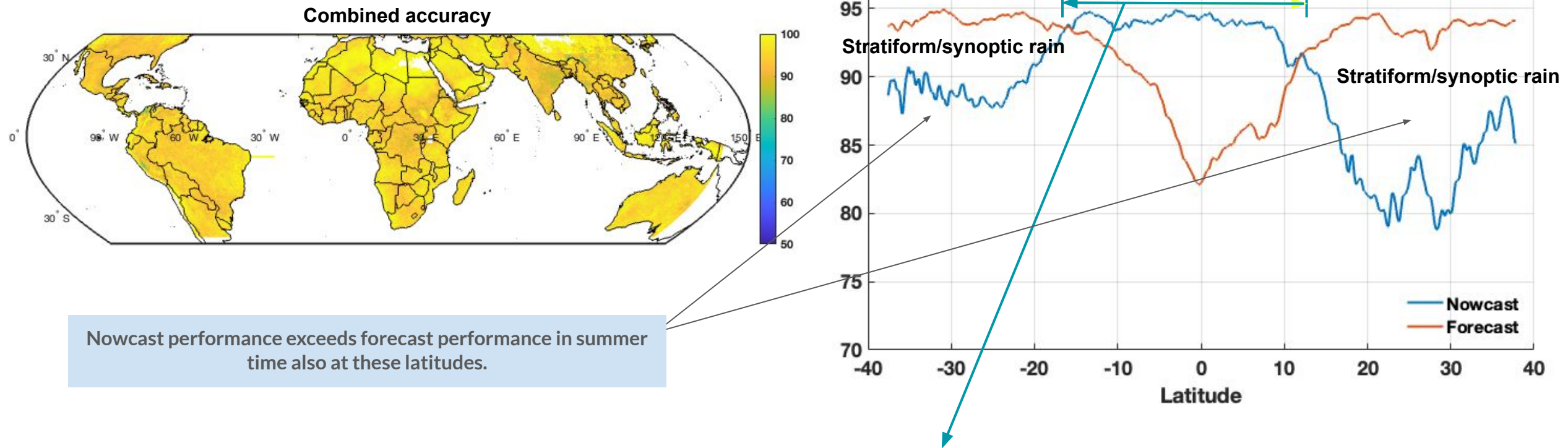
- Despite decades of incremental improvements, the performance of state of the art global forecast models have barely improved in tropical regions
- Rainfall is the single most important parameter from both a risk and opportunity perspective (e.g., floods vs performance in rainfed agriculture)
- Global forecast models struggle with local thunderstorms - it is not about “Tropics” itself
- Alerts don’t reach or resonate—language, literacy, and trust barriers

ignitia's AI-Powered, Hyper-Local Forecasting Solutions



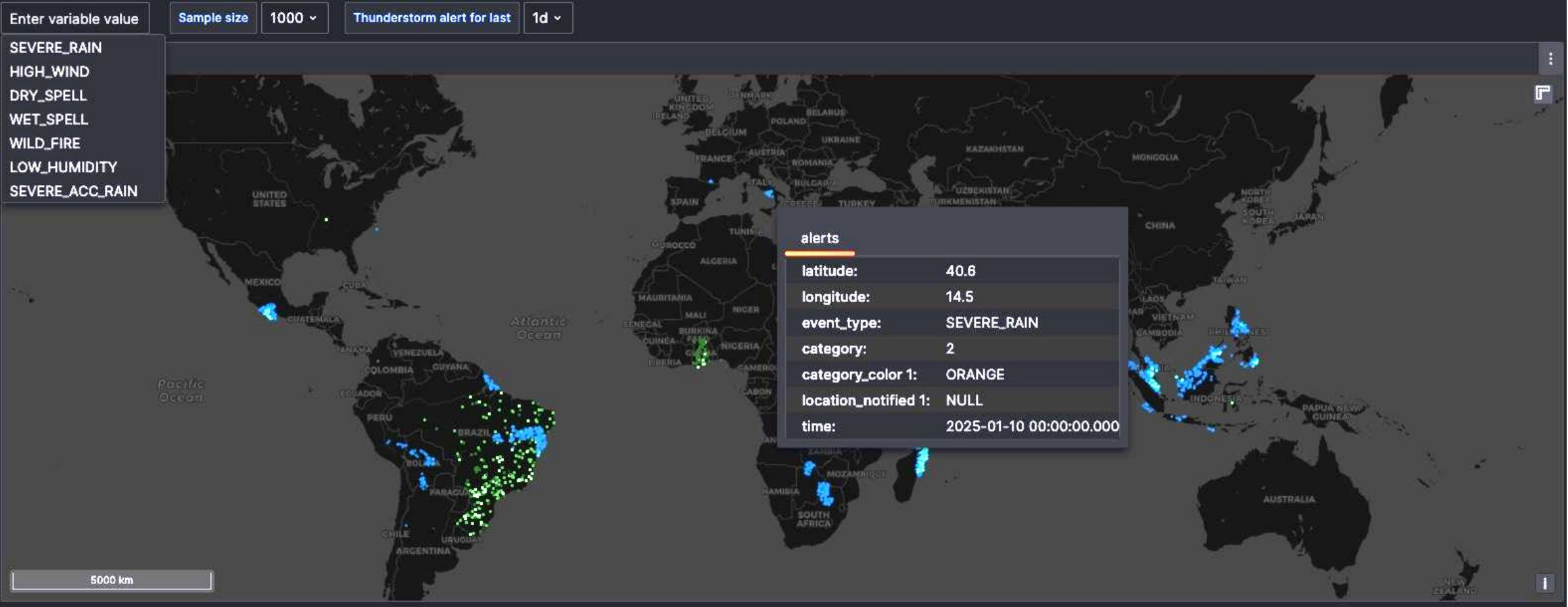
Study Dates: 20230701-20240731		Confidence forecast threshold <20%, >60%	
Forecast without Nowcast			
Metric	ignitia	Leading alternative	
% of days with best accuracy	100%	0%	
% of locations with best accuracy	93%	7%	
Bias (0 = perfect)	-2%	+33%	
Heidke Skill Score	71%	62%	
Brier score (lower=better)	0.11	0.15	
Accuracy	93%	87%	
Reliability (integral)	90%	68%	
ROC AUC	90%	88%	
CSI	60%	53%	
Success rate (SR)	76%	61%	
Miss rate (MAR)	26%	19%	
False alarm rate (FAR)	24%	39%	

Bridging the performance gap with Storm Radar Nowcast



An estimated 2-2.5 billion people live in this area

Forecast-driven extreme weather alerts: real time, remote sensing driven severe rain events shown here



AI-Driven 24/7 Storm Radar: Real-Time Risk Mitigation Without Hardware

Heavy rain disrupts life in several Indian cities

2 days ago

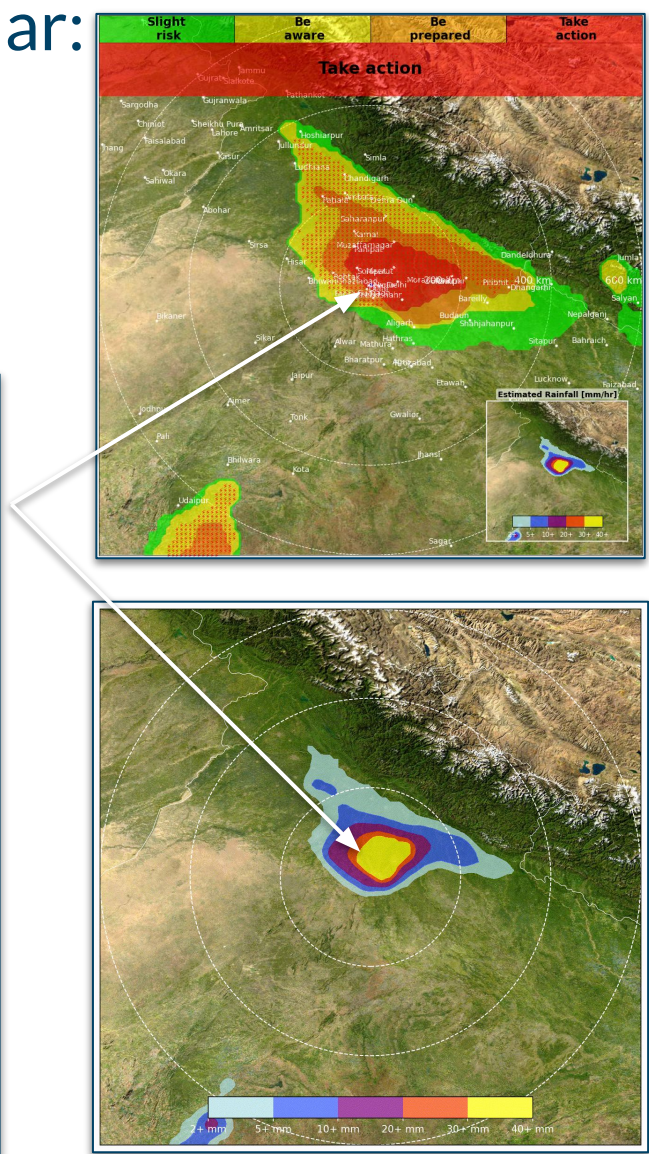
Nikita Yadav
BBC News, Delhi

Share Save

Delhi experienced a severe hailstorm on Wednesday evening

Four people have reportedly died, with more than a dozen injured in the capital Delhi and nearby areas according to local media, after a severe hailstorm hit the city on Wednesday.

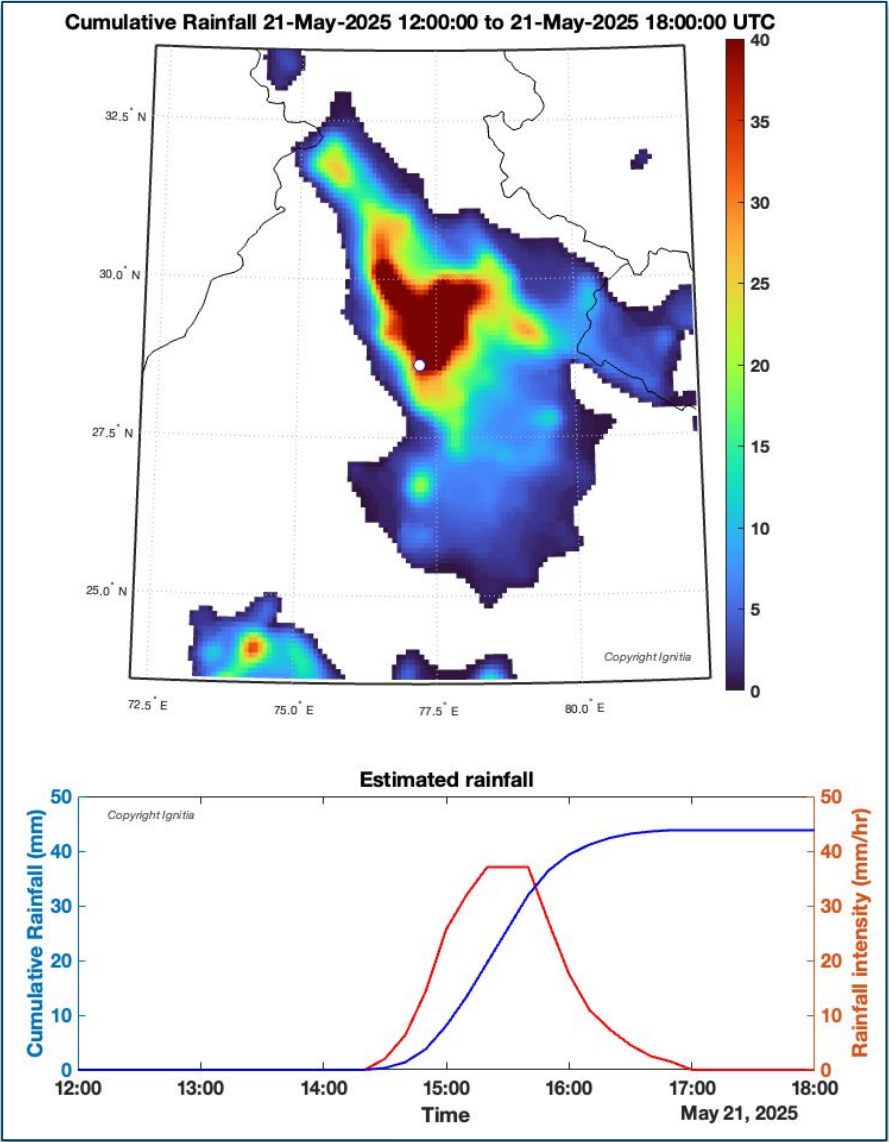
The powerful storm uprooted trees, triggered power outages and led to massive traffic snarls due to waterlogging on the streets.



WATCH! There is a risk of thunderstorms in the next 3 hours.

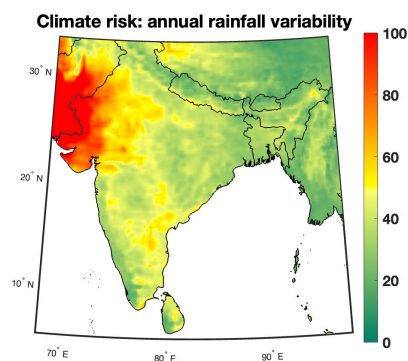
Remember: Thunderstorms may be accompanied by heavy rain, hail and strong winds.

21:24

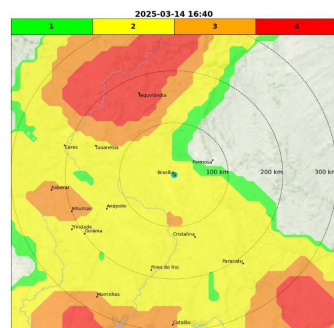


We track every single storm every minute of the day 24/7 - enabling real-time alerts and archiving of past events!

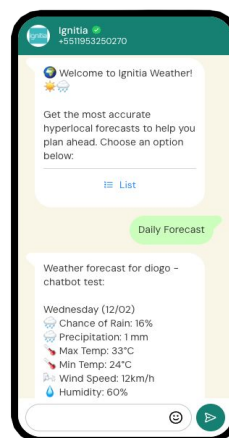
Path to Scale: Sustainable, Inclusive, and Scalable



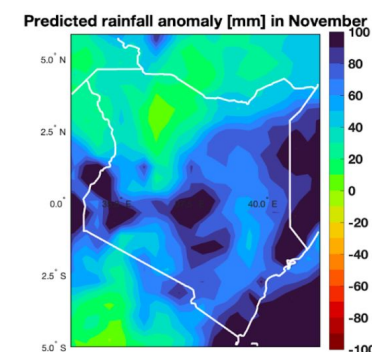
banks,
asset managers



ports, logistics, energy,
insurers, governments



climate vulnerable
populations, farmers



ag-finance, energy,
insurers



Public digital good & commercial value added services

→ Supports national EWS and private-sector decision tools

Asset-Light

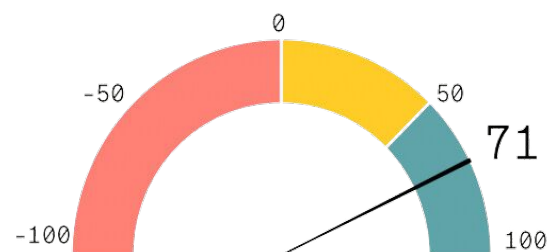
→ Built for low-bandwidth, low-literacy environments

Partner-Ready Architecture

→ APIs for met agencies, MNOs, agri-businesses, and humanitarian orgs

Real- world impact: ignitia improves climate resilience for vulnerable populations

Net promoter score



NPS = % Promoters - % Detractors
9-10 rating 0-6 rating

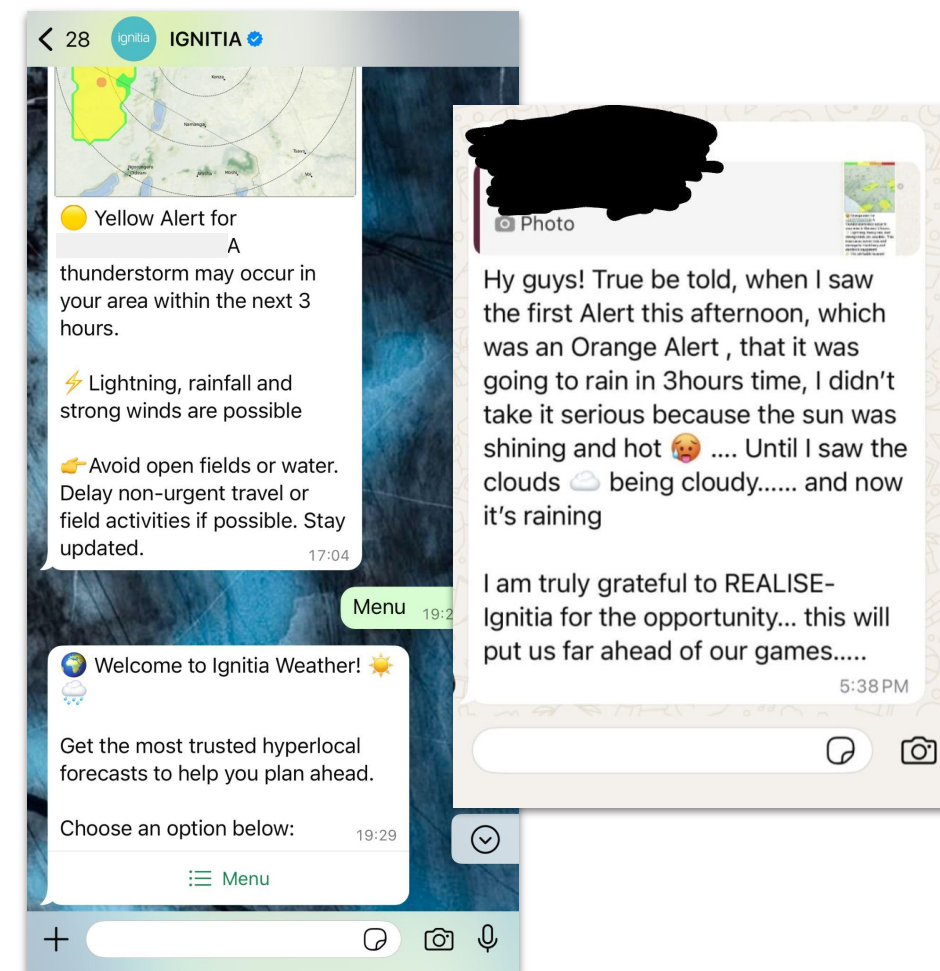
On a scale of 0-10, how likely are you to recommend ignitia to a friend or family member?

3 million+

individuals benefited directly from ignitia's weather advisory

Across 4 independent impact studies, ignitia consistently proves:

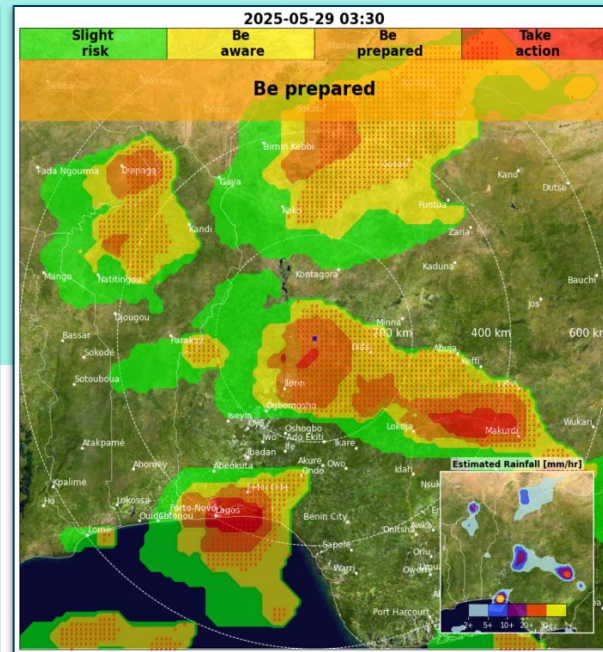
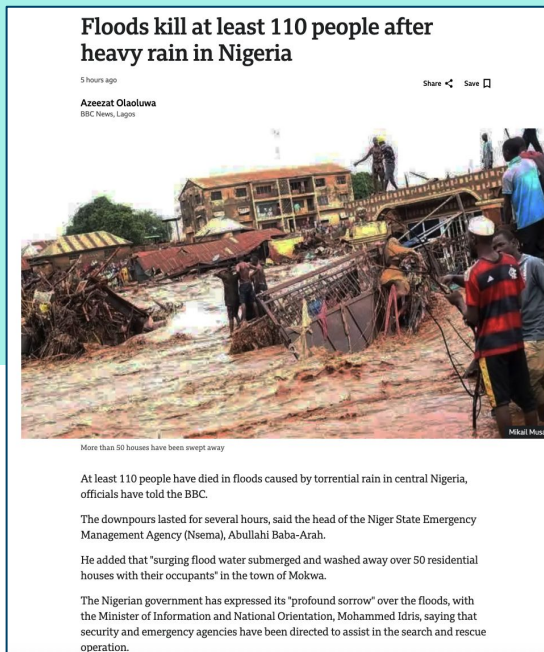
- Improved ability to make agricultural decisions
- Measurable increases in productivity or avoided loss
- Improved resilience to climate shocks
- Consistently top-tier satisfaction and loyalty (NPS > 60) across deployments
- 2x the rate of self-reported life improvement vs benchmarks in ag advisory



From Forecast to Action – Now

Our ask: “*Let’s collaborate to scale life-saving alerts for all—no matter the infrastructure.*”

Join us to bring EWS to those who need it most—“*not with more hardware, but with smarter systems.*”



Say **hello** to our
forecast Chatbot!



Note! Storm alerts are
currently only available for
locations within latitude
range **37S - 37N**

LLM-driven version under
internal testing

