

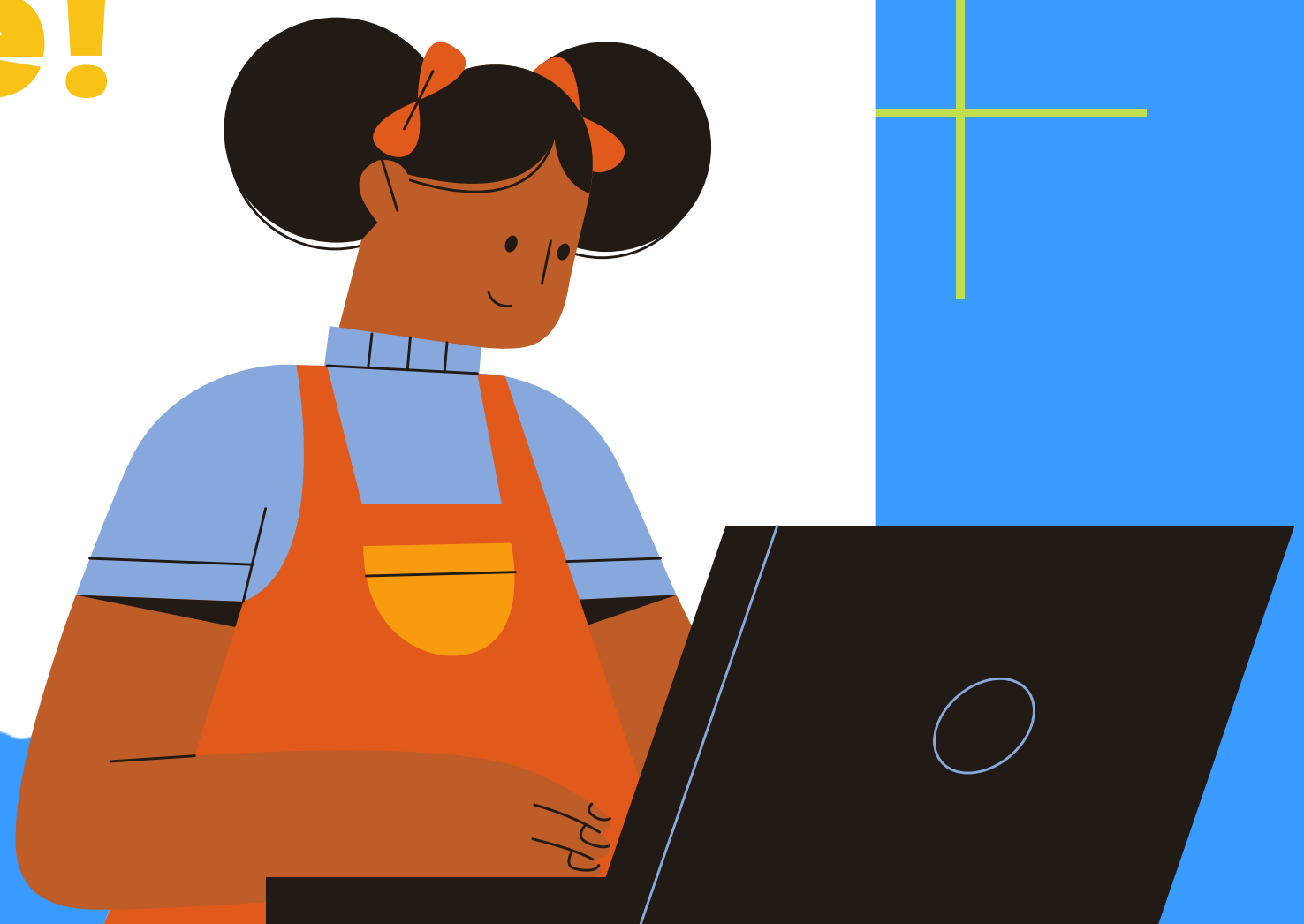
The logo consists of the letters 'POP' in a bold, blue, sans-serif font. The letter 'O' is replaced by a large yellow circle containing a blue gear-like pattern with a white semi-circle at the bottom. A teal vertical line with a dot at the top and bottom passes through the center of the 'O'. To the left of the 'P', there are five blue curved lines radiating outwards, resembling a sunburst or signal waves.

# POP

PROTECTION THROUGH ONLINE PARTICIPATION

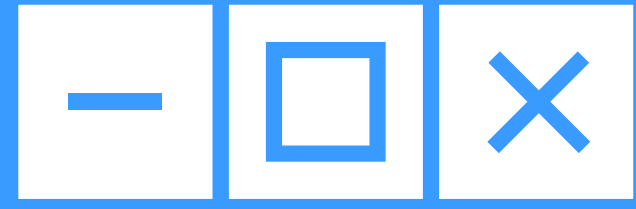


**We want to tell  
the world how  
children and  
young people use  
digital  
platforms to be  
safe!**



*You can access the  
survey here:*

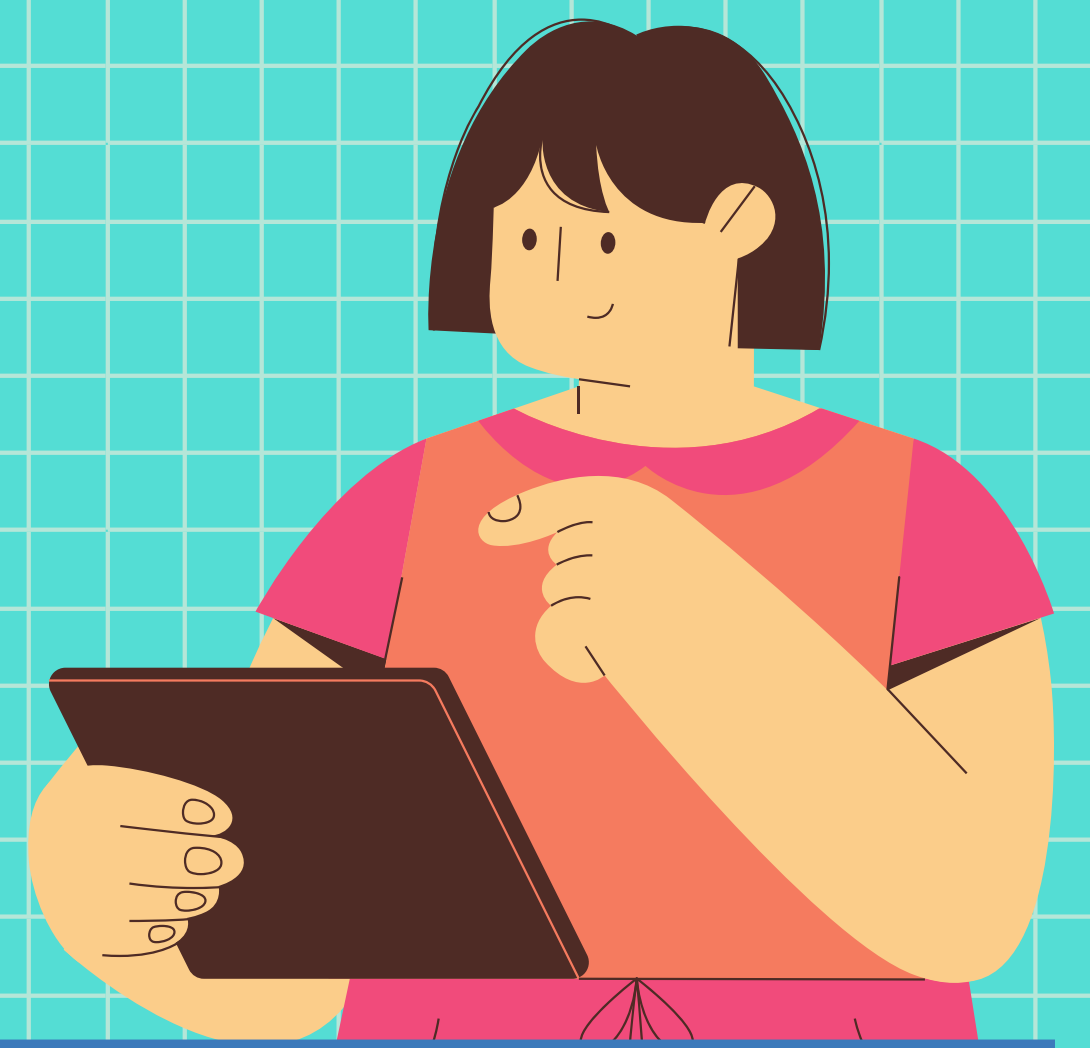




# POP

PROTECTION THROUGH ONLINE PARTICIPATION



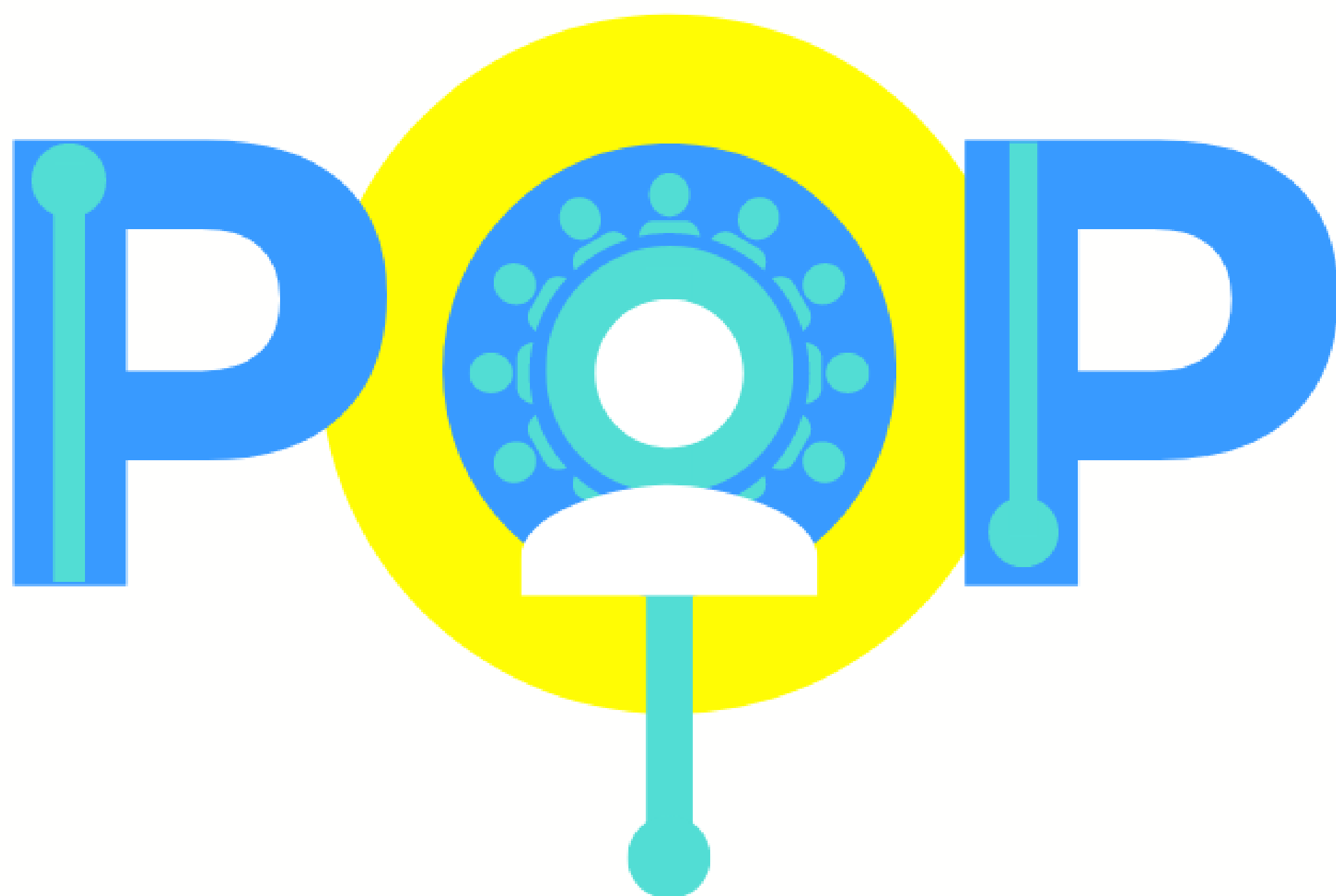


**We want to tell the  
world how **children**  
and **young people** use  
digital platforms to  
**be safe!****



*You can access the  
survey here:*





PROTECTION THROUGH ONLINE PARTICIPATION





**We want to tell the  
world how children  
and young people  
use digital  
platforms to be  
safe!**

*You can access the  
survey here:*

