



ITU Kaleidoscope 2011

The fully networked human?
Innovations for future networks and services

Cooperative Wi-Fi Sharing: Encouraging Fair Play

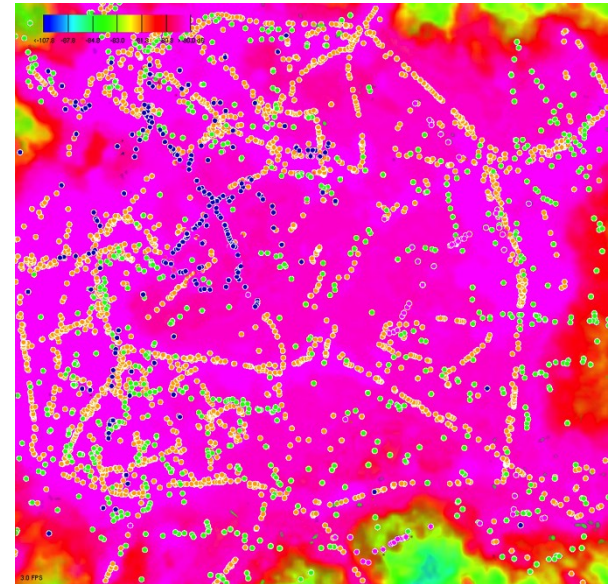
Hanno Wirtz
ComSys, RWTH Aachen University
wirtz@cs.rwth-aachen.de

Cape Town, South Africa
12–14 December 2011



Wi-Fi Sharing

- ❑ Broadband Internet and Wi-Fi
 - ❑ Ubiquitous in private homes, companies
 - ❑ Not fully utilized
 - ❑ Good city coverage
- ❑ Wi-Fi Sharing
 - ❑ Allow others to use Wi-Fi
 - ❑ Access at foreign APs



Centralized Wi-Fi Sharing

- ❑ Commercial network provider
 - ❑ Provides infrastructure & hardware
 - ❑ Controls traffic
 - ❑ Monitors user participation

❑ Examples:



Cooperative Wi-Fi Sharing

- User-provided network
 - Community concept
 - Fully decentralized
- Community members
 - Service providers
 - Network users
 - Stakeholders



Affected Parties

□ Insiders

- Take part in the network
 - Users
 - Commercial network provider
- Own interests

□ Outsiders

- ISPs
- Affected by network *operation*

Defective Behavior

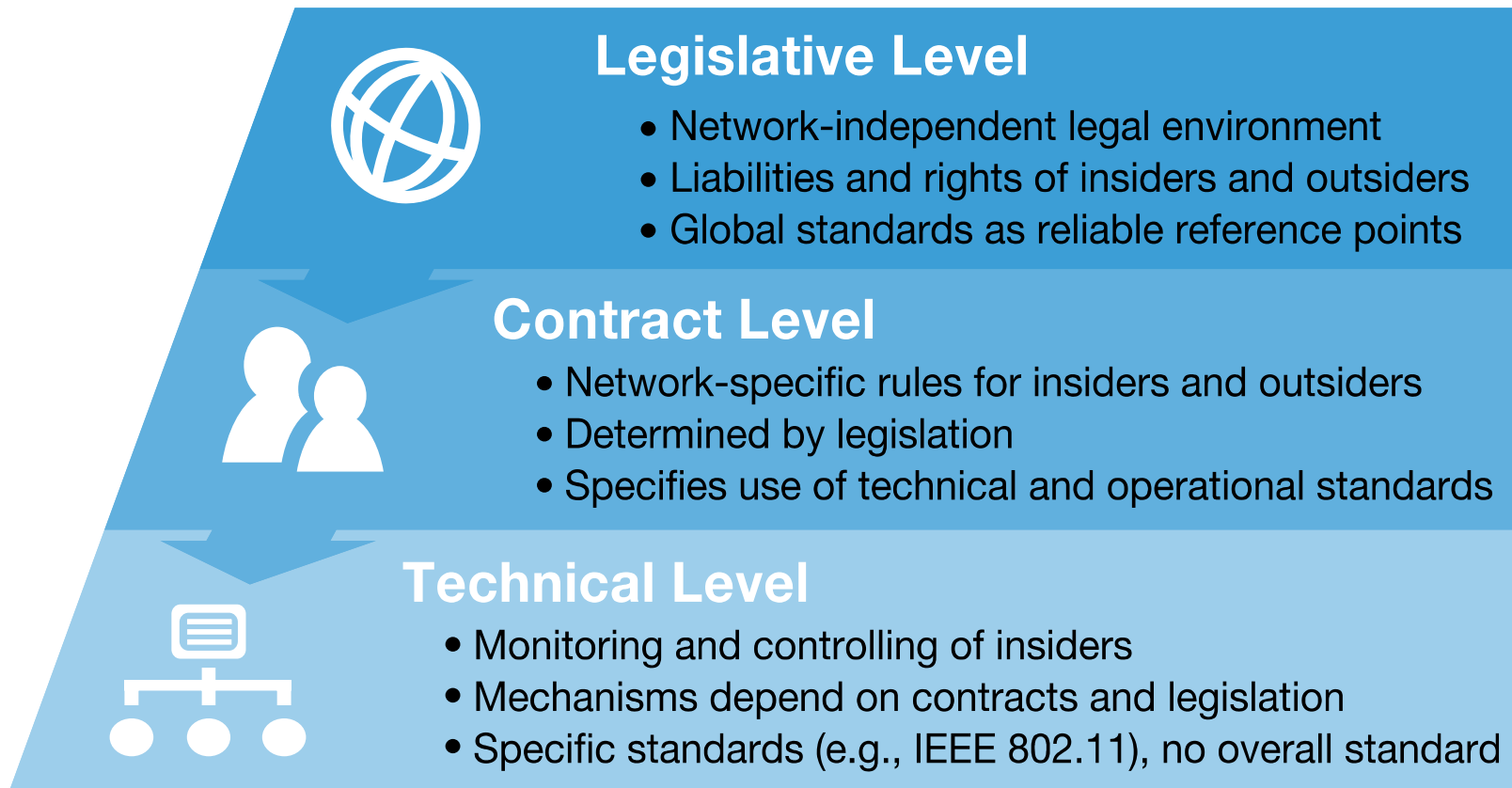
- ❑ Selfish user actions
 - ❑ Failure to *contribute*
 - ❑ Failure to *behave*



- ❑ In Wi-Fi sharing
 - ❑ No/limited AP provision
- ❑ Handle defection
 - ❑ Framework that provides rules

Frameworks

□ Incentives to *contribute* and *behave*



Incentives to Contribute

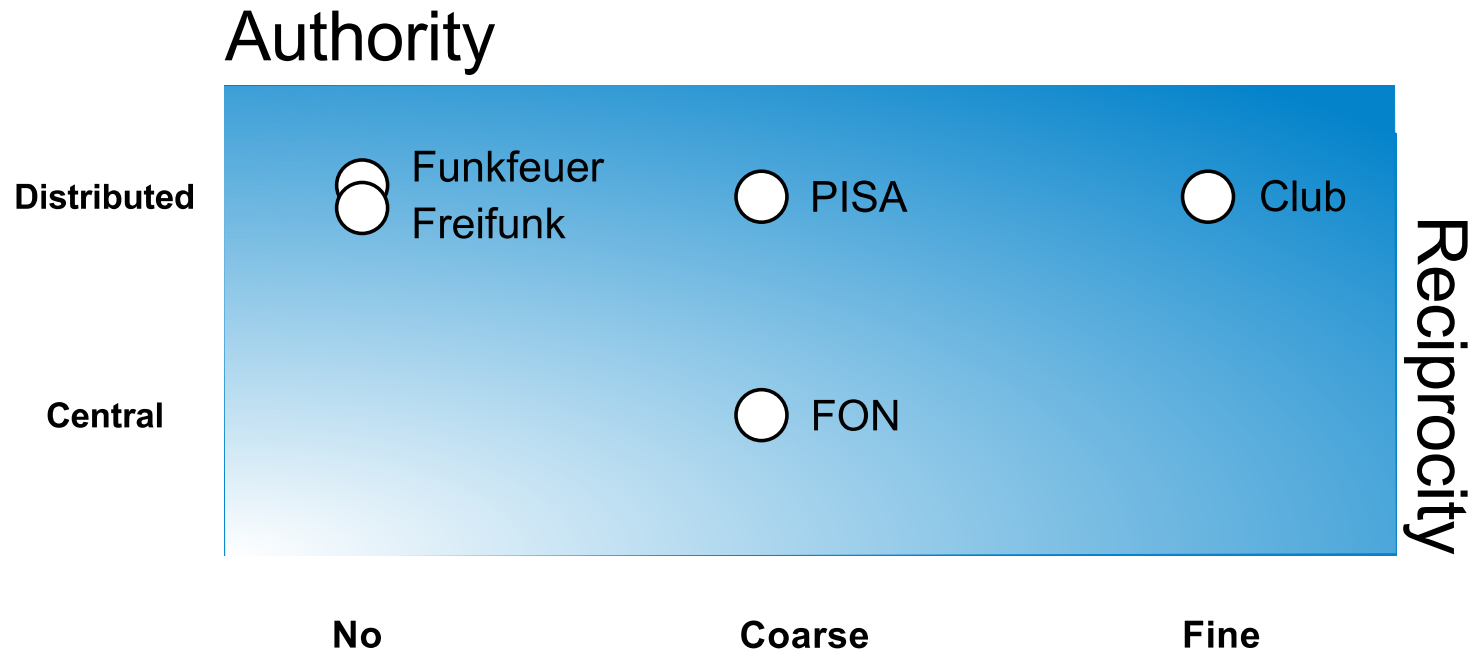
- Basic incentive
 - Benefit from own contribution
 - Gain should outweigh investment

- **Reciprocity**
 - Defective behavior lucrative first
 - Reciprocity lucrative in the long run

- How to monitor user reciprocity?

Reciprocity

□ Reciprocity in Wi-Fi sharing systems



Coarse-Grained Reciprocity

- ❑ Simple access control scheme
 - ❑ Revoke user access on defection
- ❑ FON
 - ❑ Central login-server
 - ❑ Check for AP availability
- ❑ Mobile ACcess
 - ❑ Certificate revocation



Fine-Grained Reciprocity

- ❑ Better reward user contribution
 - ❑ Isolated APs vs. frequented APs
- ❑ Club Network
 - ❑ Measure transferred data volume
 - ❑ Issue receipt
 - ❑ Hand in receipt at foreign AP
 - ❑ Teams include isolated AP owners

Incentives to Behave – I

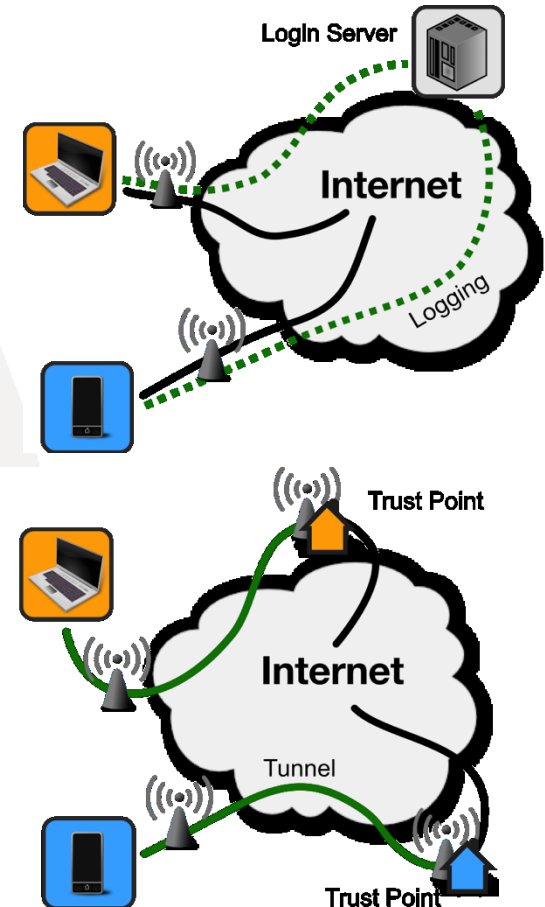
- ❑ Misuse of shared resources
 - ❑ Overuse
 - ❑ Criminal actions
- ❑ Missing perception
 - ❑ Responsibility
 - ❑ Legal liability
- ❑ Non-Repudiation
 - ❑ Attribute actions to specific user
 - ❑ Manage consequences for user



Incentives to Behave - II

- ❑ Centralized
 - ❑ Logging
 - ❑ *Service-based control*
 - ❑ *Traffic-based control*

- ❑ Decentralized
 - ❑ Route traffic over home AP
 - ❑ Responsibility for traffic
 - ❑ Revoke AP certificate
 - ❑ Prevent Internet access



Cooperation by Contract

- ❑ Network-specific framework
 - ❑ Benevolent user actions
 - ❑ Consequences of malicious actions
 - ❑ Role and obligations of a user
- ❑ Economic aspect of Wi-Fi sharing
 - ❑ Monetary agreements with ISPs
 - ❑ Legal tools
- ❑ Technical standard necessary
 - ❑ Reference for contracts



Cooperation by Law

- ❑ Laws define Wi-Fi sharing networks
 - ❑ Establishment
 - ❑ General operation context
 - ❑ Liabilities

- ❑ Highly dependent on national laws

- ❑ Highly dependent on standardization
 - ❑ Consistent reference points
 - ❑ Neutral recommendation



Conclusion

- ❑ Wi-Fi sharing as an alternative
 - ❑ Cost-efficient
 - ❑ Pervasive

- ❑ Frameworks needed
 - ❑ Unified network operation

- ❑ Standardization needed
 - ❑ Push ISPs to support Wi-Fi sharing

That's It

Thank you for your attention!

Hanno Wirtz
wirtz@cs.rwth-aachen.de