

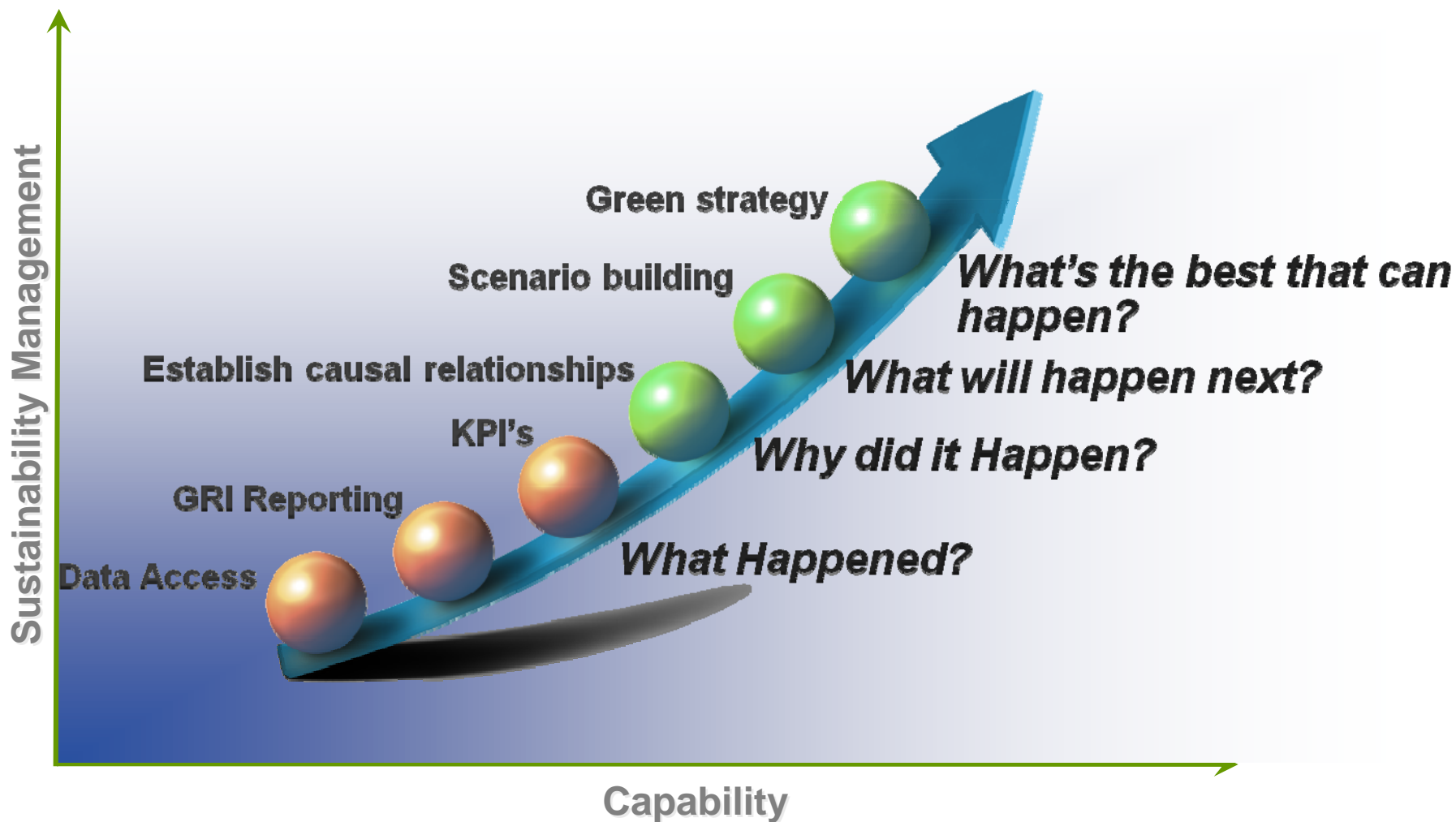
# Optimal decision-making in the sustainability agenda

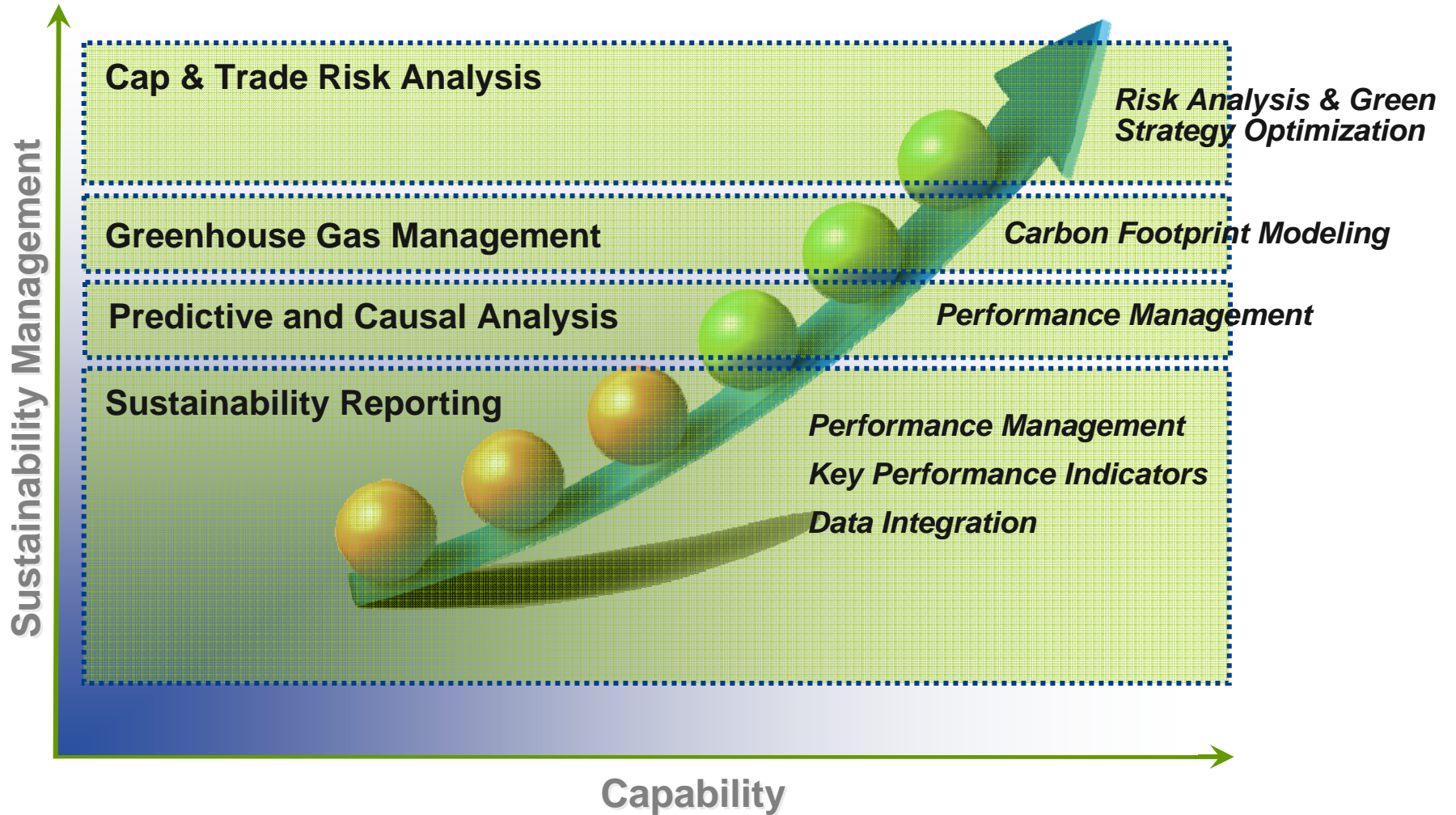
---

Sukhdev S. Dlay

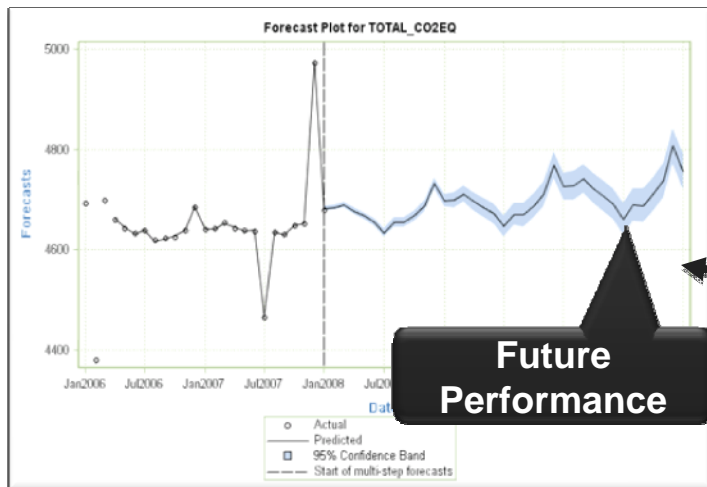
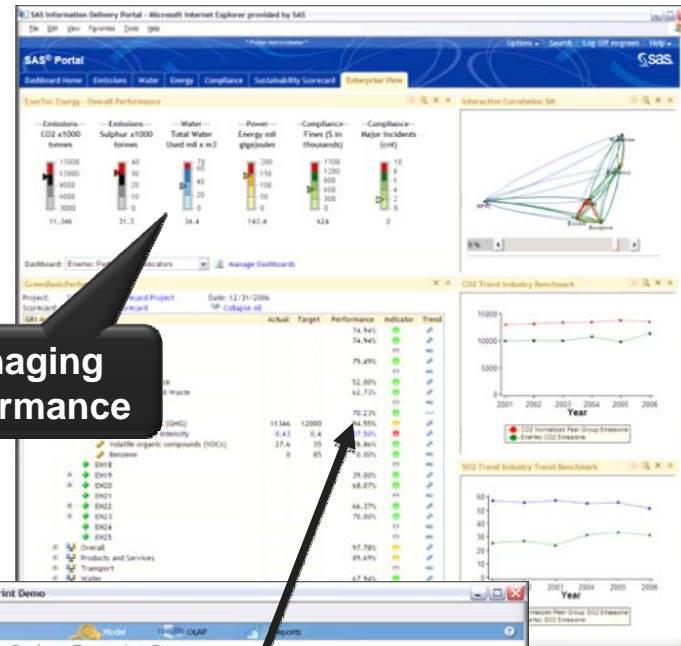
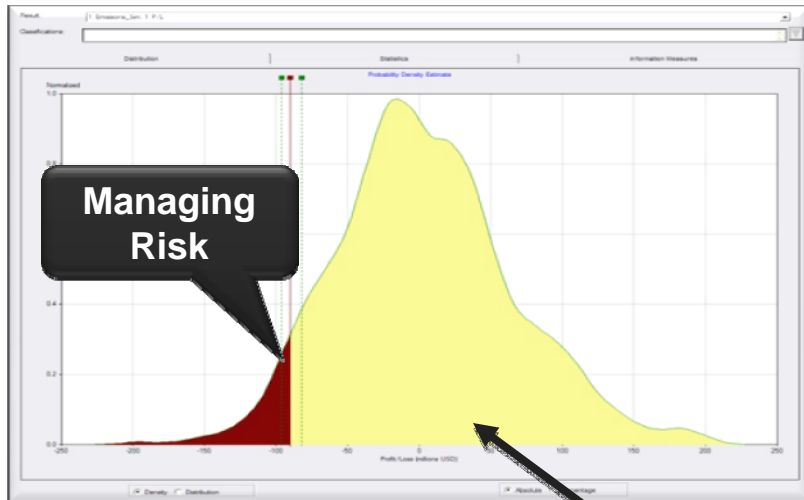
Applying technology to track and improve environmental, social, and economic sustainability

**THE  
POWER  
TO KNOW®**





# Common decision support platform...



**Historical Insight**

Display Name	Display Reference	Carbon (Tons)	Display Period	Hours in Use	Number of Unit	Usage Rate
ACTIVITY OVERVIEW		1,448,139.0				
North America	NA	1,448,139.0				
US	US	1,448,139.0				
North Carolina	NC	1,118,229.7				
Greensboro Facility		779,014.8				
Production Plant	PROD0143	9,447				
Jet Cutting Machine	EQUIP_MFG_JET_33432	1,837				
Manufacturing	MFG	1,294	200.00	8.00	2.00	0.22
Fabricate Products	FABR_4454334QC	2,946				
Manufacturing	MFG	2,946	200.00	8.00	1.00	0.40
Die Cutter	DIE	2,425				
Manufacturing	MFG	2,425	200.00	8.00	3.00	0.80
Fabricate Products	EQUIP_UTIL_7695670	148,925.5				
Equipment	EQUIP_UTIL_1489255	148,925.5				
Light	EQUIP_UTIL_1489255	148,925.5	300.00	12.00	100.00	0.30
Test Production Equipment	EQUIP_UTIL_76953	300.00	300.00	12.00	200.00	0.30
Shop Products	SHOP	300.00	300.00	12.00	30.00	0.30
Water Heater	WATER	465,103.8				
MIAC	MIAC	207,223.1				
Administrative Building 404	EQUIP_DATAAC	66,888.4				
Data Center Equipment	EQUIP_COMP_DATAAC	19,574.1				
Printer Based Servers	EQUIP_COMP_SERVER	7,049.4				
Headline	EQUIP_COMP_DESK	18,725.1				
Desktop	EQUIP_COMP_LAP	26,435.4				
Equipment	EQUIP_COMP_OUT	3,204.4				
Utility Equipment	EQUIP_UTIL_1598017	18,230.0				
Facilities Management Equipment	EQUIP_UTIL_18230	7,482.1				
Lawn Mower	EQUIP_GOLF	1,149.2				
Electric Golf Cart	EQUIP_UTIL_95587	142,979.4				
Pickup Truck	EQUIP_UTIL_3481344	348,134.4				
Other Equipment	EQUIP_UTIL_4942311	49,423.1				
Richmond Sales Office	EQUIP_UTIL_111775	11,177.5				
Light	EQUIP_UTIL_111775	11,177.5				

## **Project Goals**

- SAS has worked with an ICT company, to establish and populate a data model, apply industry accepted greenhouse gas accounting methodologies, and report requested results to Cisco's leadership council

## **Application of Information Technology**

- The customer has been able to integrate data from around the world to help determine the most effective path for greenhouse gas management, monitoring and reduction.

## Results and Benefits

- A global framework for sustainability decision support with an established accounting methodology
- New insight into the cost and carbon impacts of decision alternatives
- An information management system for upcoming third party audits that provides carbon modelling by facility and geography
- Confidence in forecasts about future revenue opportunities and operational efficiencies



**THE  
POWER  
TO KNOW®**