



Introduction to BR Space Software

Miroslav Ćosić

Head, Space Application Software, BR/IAP
International Telecommunication Union

BR Space Software



Why?

- Purpose of BR Software

What's in it for you?

- How can BR Software help you?

Where to get it?

- From where to download BR Software?

Coming soon...

- The future of BR Software & Databases

BR Space Software



Why?

- Purpose of BR Software

What's in it for you?

- How can BR Software help you?

Where to get it?

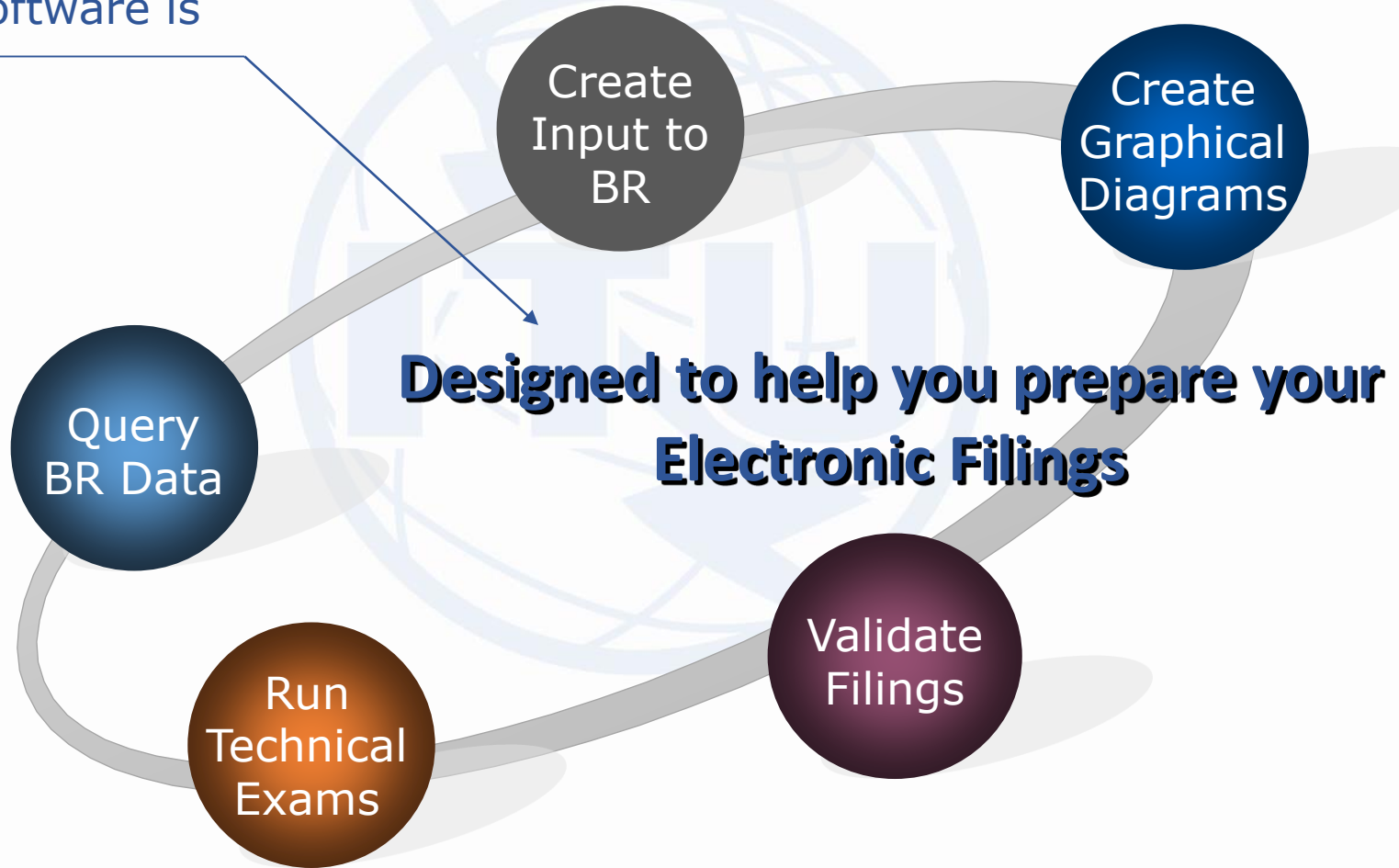
- From where to download BR Software?

Coming soon...

- The future of BR Software & Databases

Purpose of BR Software

BR Software is



BR Space Software



Why?

- Purpose of BR Software

What's in it for you?

- How can BR Software help you?

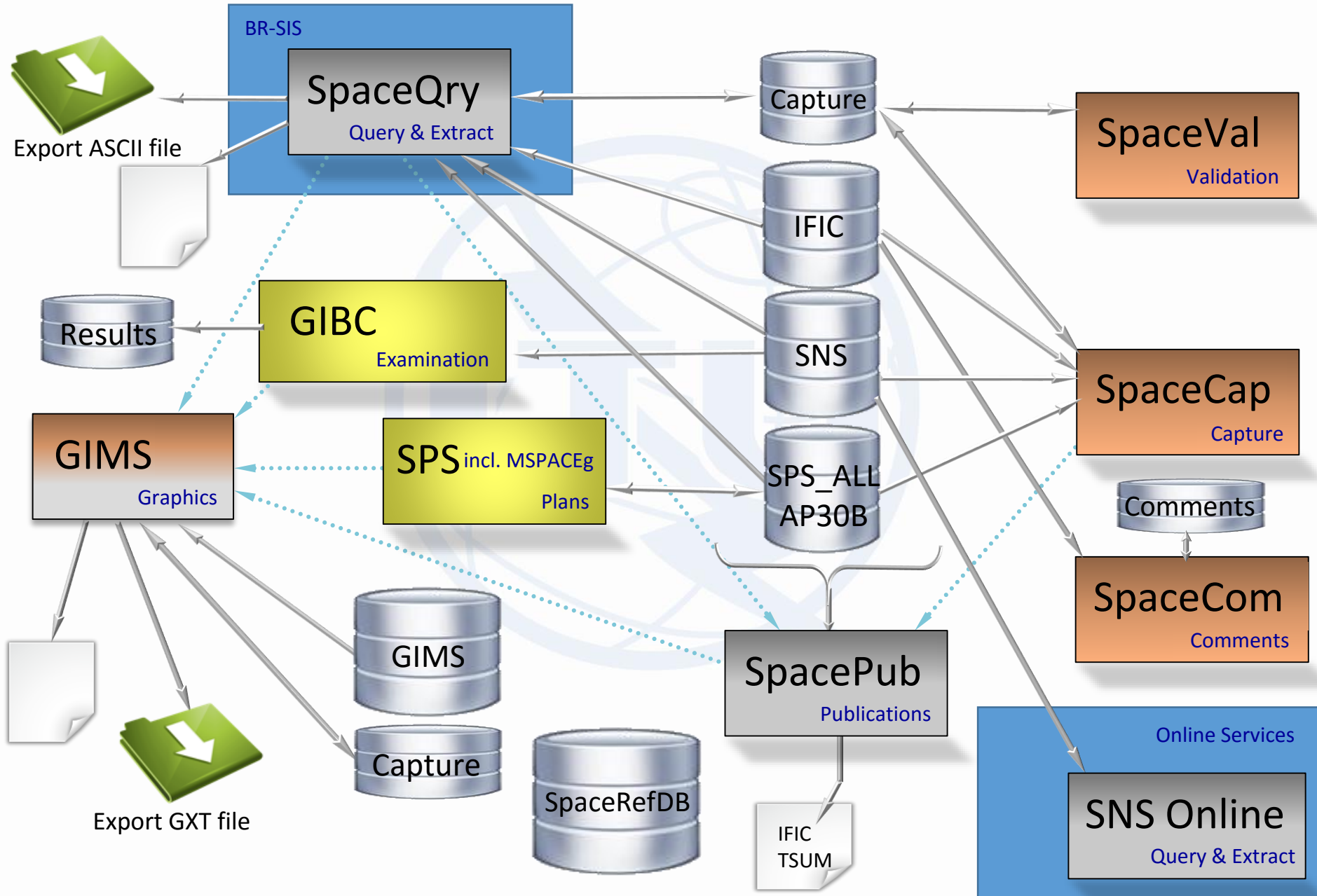
Where to get it?

- From where to download BR Software?

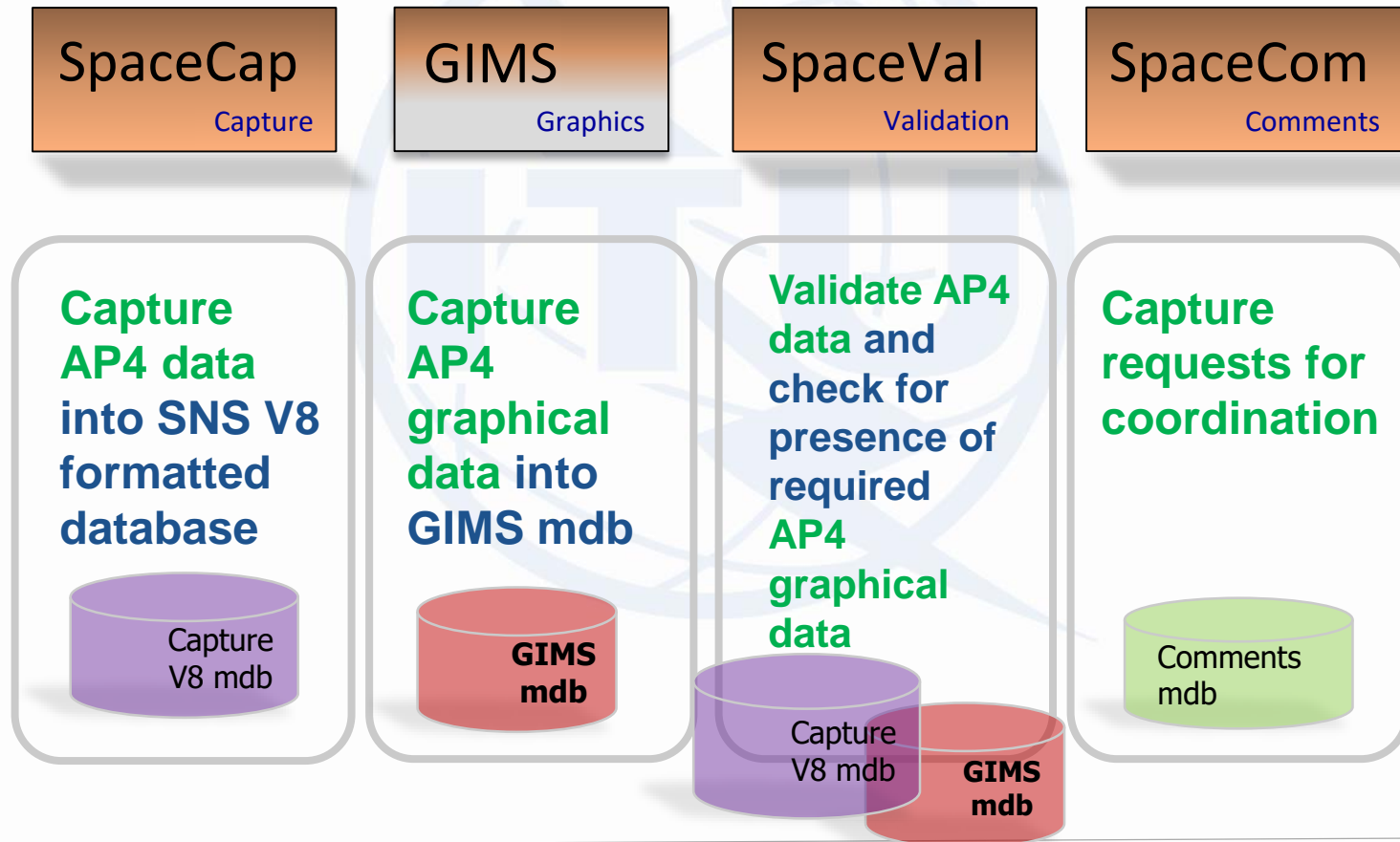
Coming soon...

- The future of BR Software & Databases

Space Network System



BR Software to Create BR Data



BR Software to Query BR Data



SpaceQry

Query & Extract

Query
satellite and
Earth stations
in the space
services from
-srsXXXX.mdb
-ificXXXX.mdb
-SPS_ALL.mdb
-AP30B.mdb

SNS Online

Query & Extract

Query
satellite and
Earth stations
in the space
services from
-SNS master
database

SpacePub

Publications

Print
satellite and
Earth stations
in the space
services from
-srsXXXX.mdb
-ificXXXX.mdb
-SPS_ALL.mdb
-AP30B.mdb

GIMS

Graphics

Query
for graphical
data in the
GIMS database

BR Software to Run Tech Exams



GIBC

Graphical Interface for Batch Calculations

PFD
-Space
-Terr.

AP7

AP8

PFD
AP30/30A

AP30B

SPS

the *space plans* software (including “MSPACEg”)

Determination of the coordination requirements for the Plans for space networks in Appendices 30, 30A of the Radio Regulations

Space Application Manager



Navigation menu with icons for home, settings, and user profile. Filter tabs for 'All' and 'Web'. Search results for 'Best match' showing 'SAM v8 Desktop app' as the top result.

Screenshot of the ITU-BR Space Applications Manager v8.0.0 (SNS V8) application window. The window title bar includes standard OS controls. The interface features a left sidebar with 'Favorites', 'BR Soft', and 'BR Web' sections. The main area displays a grid of application tiles, each with an icon and name: BR-SIS SpaceQry, BR-SIS SRSCovert, SpaceVal, GIBBC, GIMS 11 BETA, IDWM, SPS, SpaceCap, SpaceCom, and SpacePub. The ITU logo and slogan 'Committed to connecting the world' are visible at the bottom left of the window.

BR Space Software



Why?

- Purpose of BR Software

What's in it for you?

- How can BR Software help you?

Where to get it?

- From where to download BR Software?

Coming soon...

- The future of BR Software & Databases

Latest BR Software Version



Where to check for latest versions



Download from the BR web site

<http://www.itu.int/ITU-R/software/space/index.html>



From the IFIC DVD



Automatic Update

Installation requires administrator privileges

BR Software Version



- Each World Radiocommunication Conference introduces new resolutions and changes to the Radio Regulations
 - **Decisions taken at WRC-12: v7**
 - New due diligence procedure for 21-22.4 GHz (RES552)
 - More details: CR/338
 - **Decisions taken at WRC-15: v8**
 - New AP4 data elements
 - Support new provisions as per CR/411 of 1 Dec 2016
 - Changes to CR/C processing: CR/415 of 9 Dec 2016

BR Space Software



Why?

- Purpose of BR Software

What's in it for you?

- How can BR Software help you?

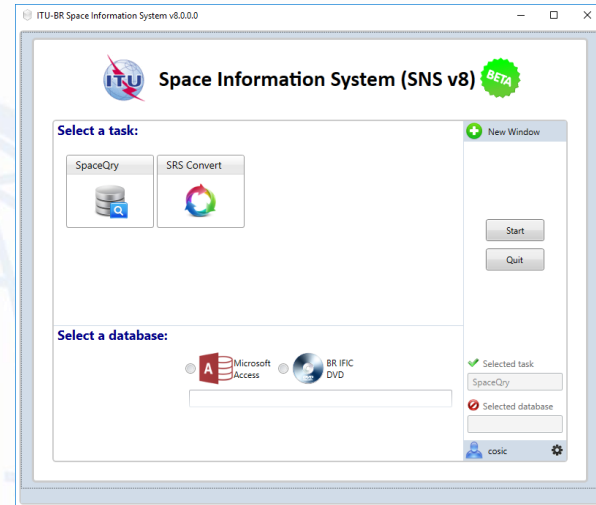
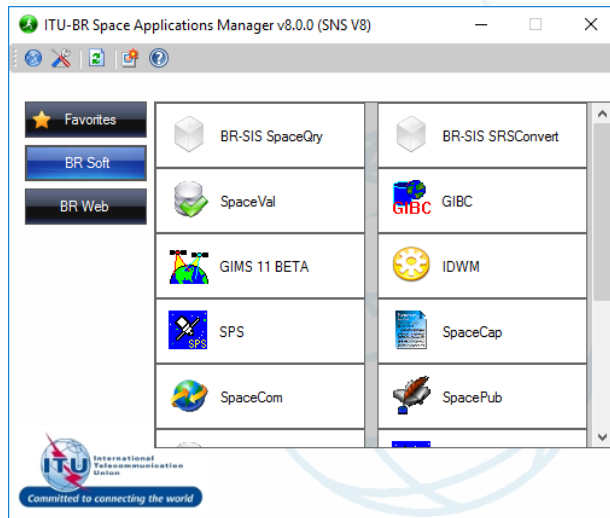
Where to get it?

- From where to download BR Software?

Coming soon...

- The future of BR Software & Databases

Future of BR Space Software



Current BR Space Network System



- Classical desktop applications
- Different user interfaces
- Separation of desktop applications and web services

Future BR Space Information System



- Single user interface
- Consistent look and feel
- Rich user experience
- Gain in terms of training and productivity
- Seamless integration with existing and future online services and applications

Future of BR Space Software



- Resolution 908 (Rev. WRC-15): Electronic submission and publication of satellite network filings



- Impacts: SpaceVal, SpaceCap, SpaceQuery, SpacePub

Future of BR Space Software



BETA GIBC SNS V8 - Graphical Interface for Batch Calc... - [] [X]

Appendix 30B | Appendix 30 30A | Power Control | Tools / Options
Appendix 8 | PFD (terrestrial serv.) | PFD (space serv.) | Appendix 7

Start

Network: []

Examination Data

Ap8 Case I/II: [Case I&II] Findings Level: [Group]
 Use Polarization Output Level: [Level 1]

Existing

Check Against Existing Administration ID: []
Transaction ID: [] Sat. Network Symbol: []

Date

Date Year - Month - Day [1990] - [01] - [01]

Files Path

C:\BR_TEX_RESULTS\AP8\ [Open Folder]

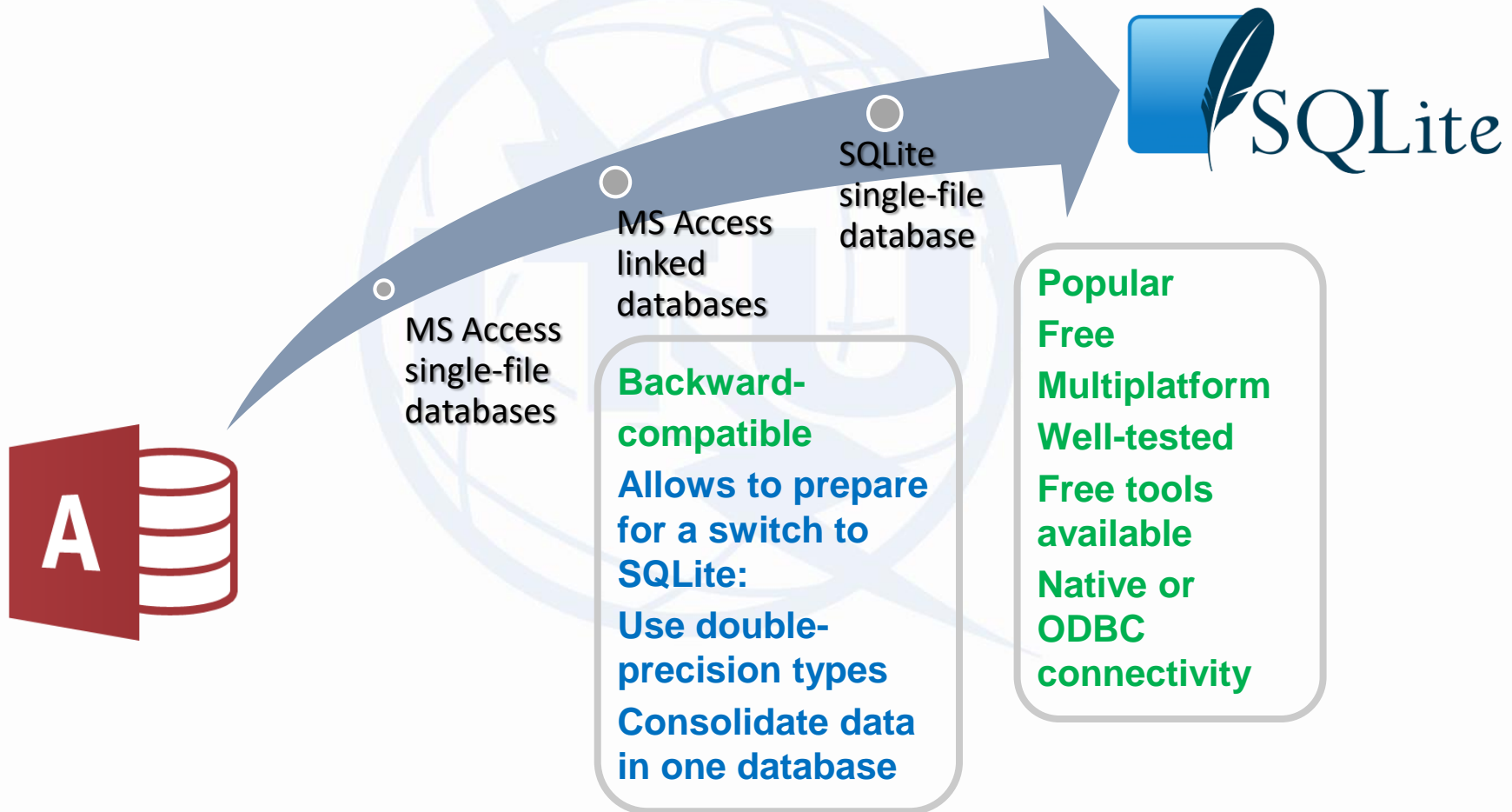
EXIT Help

- New AP8, PFD (space), PFD (terrestrial) exam software:
 - Migrate to modern technology for easier maintenance
 - Better performance
 - More user-friendly output
 - Benefit from multi-core processors
 - Detailed results

Future of BR Space Databases



srsXXXX.mdb: reaching the size limit of single-file MS Access Database





Thank you for your attention

**Questions, suggestions, comments:
brsas@itu.int**
