

**ITUEvents**

# **3<sup>rd</sup> ITU Inter-regional Workshop on WRC-19 Preparation**

4-6 September 2019

Geneva, Switzerland

[www.itu.int/go/ITU-R/wrc-19-inwsp-19](http://www.itu.int/go/ITU-R/wrc-19-inwsp-19)



Organized by:



**3<sup>rd</sup> ITU INTER-REGIONAL WORKSHOP  
ON WRC-19 PREPARATION  
(Geneva, 4-6 September 2019)**

**ITU WRC-19  
Sharm-El-Sheikh  
Logistical information**

***Egypt  
(Arab Republic of)  
(WRC-19 Host Country)***



# ITUWRC

## SHARM EL-SHEIKH2019

28 October - 22 November 2019  
Sharm El-Sheikh, Egypt

***Logistical Information***

# Egypt is honored to host one of the biggest ITU conferences in Sharm El-Sheikh, WRC-19



# The Venue

- ❑ WRC-19 will be hosted in Sharm El-Sheikh International Convention Center.
- ❑ This center marks itself as one of the largest convention centers in the region.
- ❑ In addition to “The Capital” and “The Summit” rooms with a huge capacity of more than 3500 and 900 participants respectively, the Center comprises a variety of differently-capacitated meeting rooms ranging from 100-500 participants and more.



# Host country services & facilities

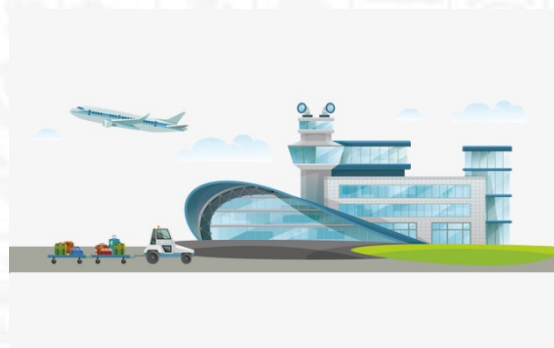
## Host Country Website

The National Telecom Regulatory Authority has created a website for WRC-19 to facilitate and assist participants in getting the services and facilities they need.

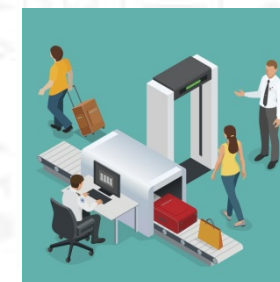
[www.wrc19egypt.eg](http://www.wrc19egypt.eg)



# Airport services



❑ WRC-19 Support and Information Desks will be available for the participants during their transit in Cairo Airport .



❑ A dedicated desk for WRC-19 will be available at Sharm El-Sheikh International airport on a 24 hours basis.



# Visa



- All Egyptian embassies and consulates around the world will facilitate the entry visa for participants.
- To guarantee visa issuance in time, participants must apply at an early stage.
- E-visa services and Visa upon arrival is available for countries listed in the following link. [www.visa2egypt.gov.eg](http://www.visa2egypt.gov.eg)
- Countries with no Egyptian representation should send an email to [WRCVisa@tra.gov.eg](mailto:WRCVisa@tra.gov.eg) for assistance.

## **Good to know**

- E-visa and Visa upon arrival duration is 30 days.
- For obtaining 30+ days participants are advised to directly submit their request to the nearest embassy and consulate.
- The deadline for visa assistance requests is 30 days prior to the date of arrival.
- For any inquiries related to visa issues please send an email to [WRCvisa@tra.gov.eg](mailto:WRCvisa@tra.gov.eg)



# Transportation



- ❑ Free of charge transportation will be provided for all Conference participants from the airport to the official hotels and to the conference venue and vice versa.
- ❑ Help desks are available at Sharm El-Sheikh international airport and in the lobby of each official hotel on a 24 hours basis.
- ❑ Shuttling schedule will be posted on the HC website prior to the conference.
- ❑ Kindly fill in your travel details to guarantee shuttling services, through the link: <https://goo.gl/c9gZGo>

## Limousine services



- ❑ Limo services are provided to all participants throughout the event.
- ❑ To request a Limo, please send a direct email to → [transportation@tra.gov.eg](mailto:transportation@tra.gov.eg)



# Accommodation

- ❑ Around 27 Official hotels recommended by the Host Country with different price range.
- ❑ To book your accommodation in the official hotels please visit <https://connect.eventpro.net/eu/client/DB041011>
- ❑ For any further inquiries related to accommodation, please contact [WRChotels@gcm-egypt.com](mailto:WRChotels@gcm-egypt.com)

# Additional Services

- You can get your National SIM cards in WRC-19 venue.
- A dedicated Information Desk for any inquiries/Support can be found at WRC-19 venue for :
  - Egyptair
  - Immigration Authority
  - tourist activities

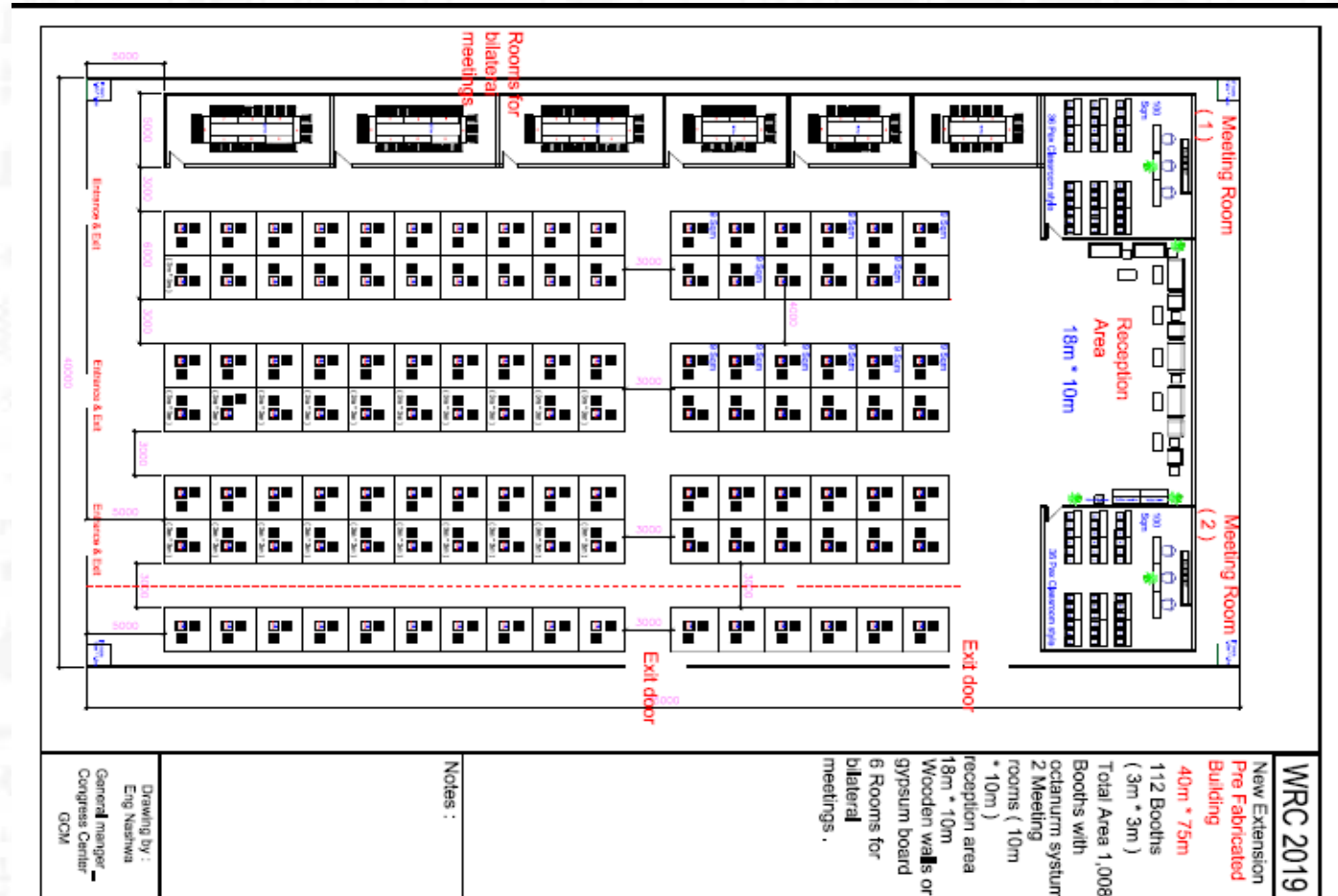
# Exhibition



- ❑ An Exhibition Area is available for ITU Member States and ITU-R Sector members registered to participate in the ITU (WRC-19) from 28 October – 22 November 2019
- ❑ Exhibition will be located at the Sharm El Sheikh International Congress Center (SHICC – Sharm ICC)
- ❑ Please refer to the exhibition manual on the host country website <https://wrc19egypteg/index.php/exhibition/>

# Exhibition Specs

- ❑ Gross area: 3,000 sqm
- ❑ Exhibition floor-space: 1000 sqm



For more information on **WRC-19** logistics please visit the Host Country website at:

[www.wrc19egypt.eg](http://www.wrc19egypt.eg)



# ITUWRC

## SHARM EL-SHEIKH2019

28 October - 22 November 2019  
Sharm El-Sheikh, Egypt

### WAITING FOR YOU

