



## Latin American – Regional Indicators System (RIS)

*By: REGULATEL*

World Telecommunication/ICT Indicators Meeting  
Geneva, Switzerland  
10-11 February 2005

### REGULATEL – What?

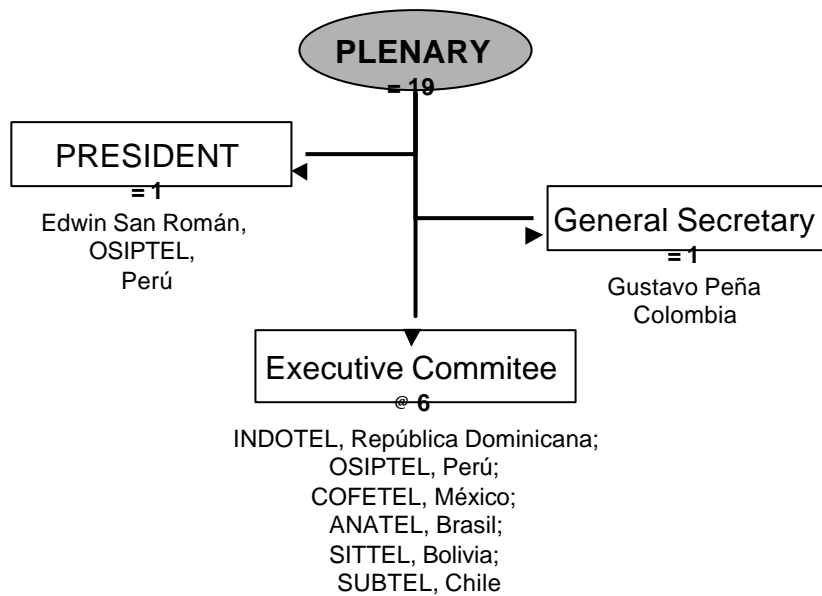
- **Latin-american Regulator's Forum** – Like IRG in Europe
- Created in February **1998** in Colombia
- **Objective:** cooperation for the development of the telecommunications sector in Latin-America
- **Activities:**
  - Investment promotion
  - Improve competition
  - Universal access / service

## Membership – Who?

**19 latin american regulators are members of Regulatel:**

Argentina		Bolivia		Brasil	
Colombia		Costa Rica		Cuba	
Chile		Ecuador		El Salvador	
Guatemala		Honduras		México	
Nicaragua		Panamá		Paraguay	
Perú		República Dominicana			
La república Oriental de Uruguay		Venezuela			

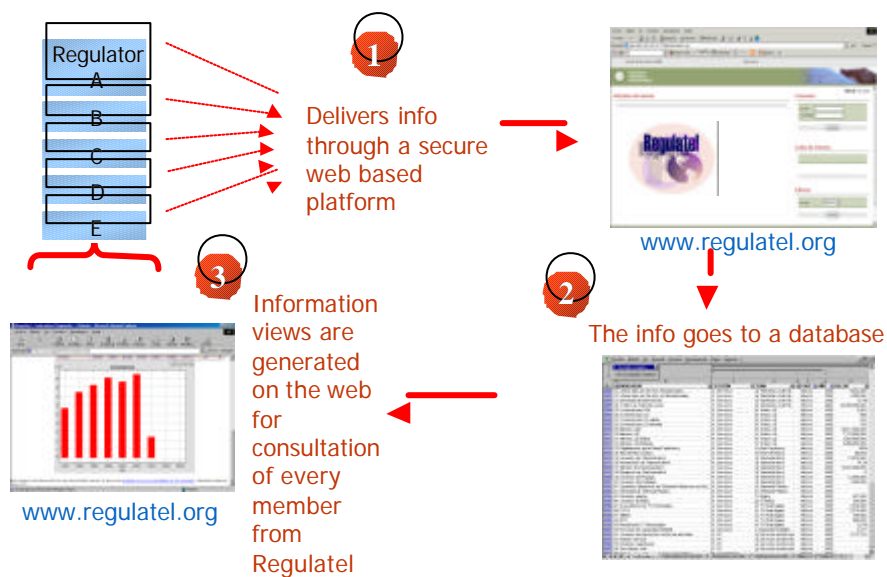
## Organization – How?



## RIS – What?

- **Regional Indicators System**
- **Objective:** Compile, manage and publish statistical information from Regulatel members.
- Dynamic, interactive tool. Constant updates to the database. COFETEL coordinates the RIS.
- **First Methodological Workshop** (May 2004): discussion on metrics and methodology for indicators.
  - Experts Group
- **Second Methodological Workshop** (exp. March 2005), Agreements on 25 indicators. Harmonization!

## RIS – How?



## Indicators – What?

### 1. Socio-economic Indicators

- Gross Domestic Product
- Total Population
- Exchange rate USD
- Households Having a Telephone Line

### 2. Traffic

- Local Fixed
- National Long Distance
- International Long Distance Outgoing
- International Long Distance Incoming

### 3. Network Infrastructure

- Main telephone lines
- Mobile Telephony Subscribers
- Pay TV Subscribers
- Internet Users

### 4. Structure of Industry

- Income of the Telecommunications
- Investment in the Telecommunications
- Men and Women Employee

### 5. Connectivity

- Number of Digital Connectivity Centres (DCC)
- Number of Computers in DCCs
- Number of Computers in DCCs Rural

### 6. Tariffs

- Basic Access Charge
- National Long Distance per Minute Rates
- International Long Distance per Minute Rates

### 7. Quality of Service

- Waiting time for new connection
- Number of faults per 100 lines per year
- Per cent of faults repaired

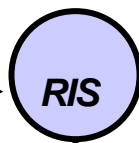
## Indicators – How?

### DEMAND INDICATORS

National Statistics Offices (NSO's)  
CEPAL

### SUPPLY INDICATORS

Regulators  
REGULATEL



**PROJECTS**

- Interconnection (PERU)
- Universal Service (Brasil + World Bank)
- Broadband (Argentina)



**Comisión  
Federal de  
Telecomunicaciones**

**Contact:**

**Pablo Hinojosa / [hinojosa@cft.gob.mx](mailto:hinojosa@cft.gob.mx)  
Guillermo González / [grobledo@cft.gob.mx](mailto:grobledo@cft.gob.mx)**