

INTERNATIONAL TELECOMMUNICATION UNION

*Telecommunications Development Bureau
(BDT)*

REGIONAL OFFICE FOR AFRICA



**THE ROLE OF THE REGIONAL
OFFICE - SERVICES**

SPECIFIC FUNCTIONS OF THE TELECOMMUNICATION DEVELOPMENT SECTOR

- Raise the level of awareness of decision makers concerning the important role of telecommunications in national economic and social development programmes and provide information and advice on possible policy and structural options.
- Promote the development, expansion and operation of telecommunication networks and services, particularly in developing countries by reinforcing capabilities for human resources development, planning, management, resource mobilization, and Research and Development.



SPECIFIC FUNCTIONS OF THE TELECOMMUNICATION DEVELOPMENT SECTOR

- Enhance the growth of telecommunications through co-operation with other relevant organizations, both regional and global.
- Mobilize resources to provide assistance to developing countries in the field of telecommunications.
- Promote and co-ordinate programmes to accelerate the transfer of appropriate technologies to developing countries.



SPECIFIC FUNCTIONS OF THE TELECOMMUNICATION DEVELOPMENT SECTOR

- Encourage participation by industry in telecommunication development activities in these countries.
- Offer advice, carry out or sponsor studies, as necessary, on relevant issues (regulatory and policy matters) related to the sector; and
- Collaborate with other sectors, the secretariat and other bodies in its overall co-ordination work.

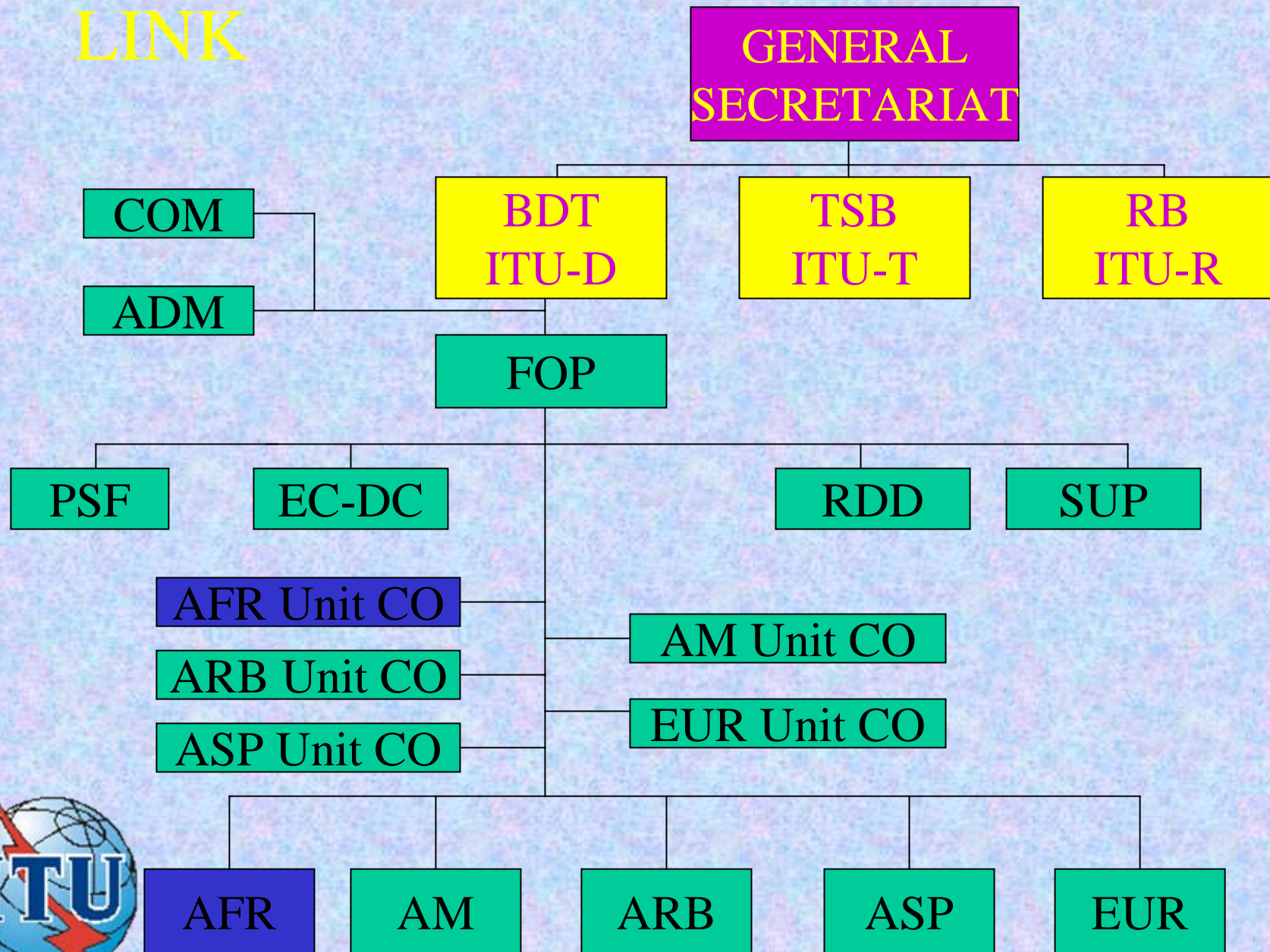


ITU/BDT REGIONAL OFFICES

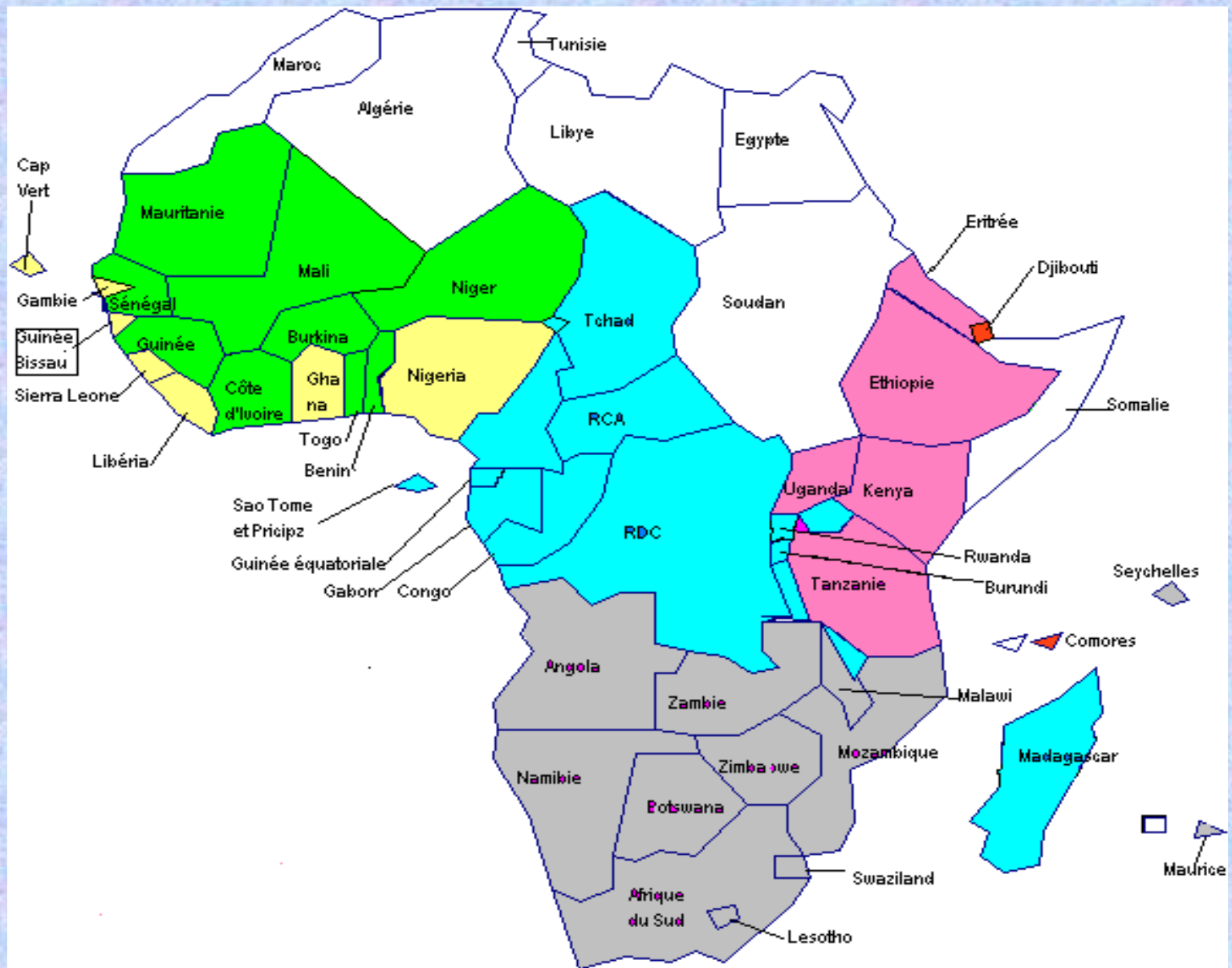
1. Africa Region – (AFR)
2. Americas Region – (AM)
3. Arab Region – (ARB)
4. Asia Pacific Region – (ASP)
5. Europe Region – (EUR)



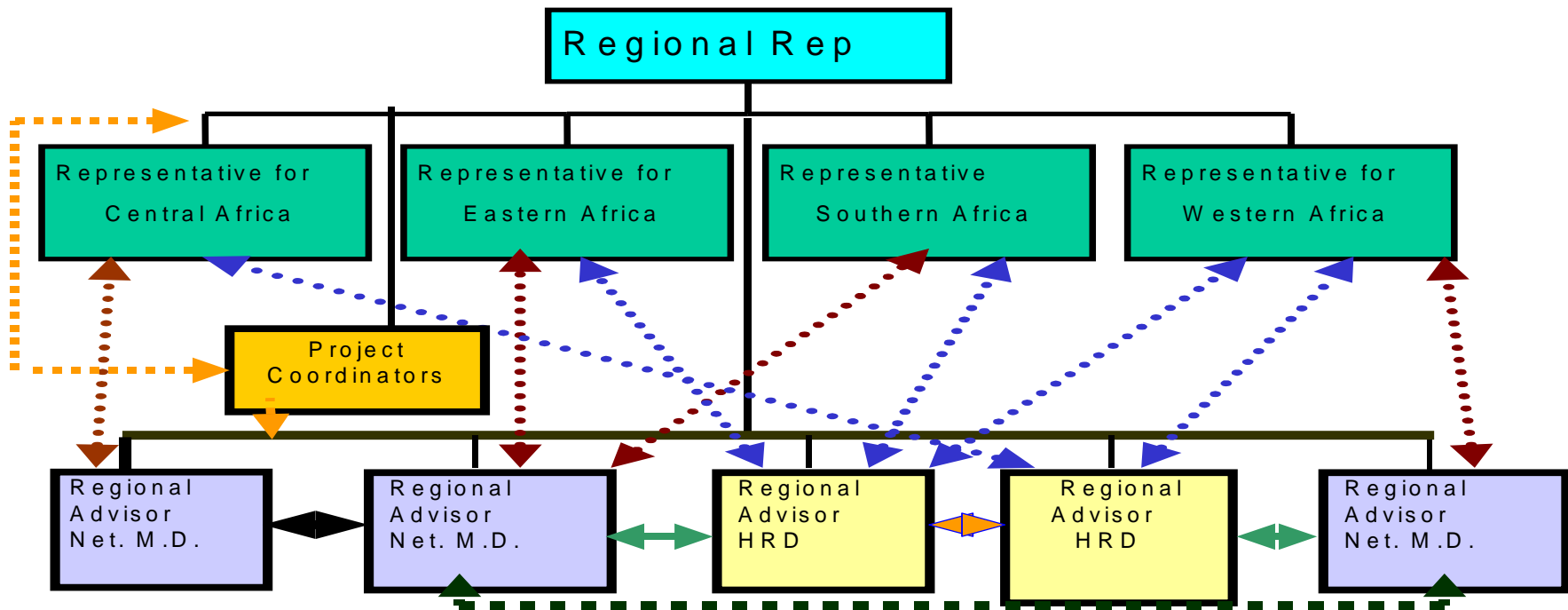
REGION OFFICE – HEAD OFFICE LINK



ITU REGIONAL OFFICE FOR AFRICA



ORGANIZATION STRUCTURE



The above titles are not official ITU titles but an idea of an organization structure.

ACTIVITIES

- NETWORK MANAGEMENT AND DEVELOPMENT
- SECTOR REFORM, REGULATION AND POLICY
- HUMAN RESOURCE MANAGEMENT AND DEVELOPMENT
- PROJECTS:-
INDAFTEL & AFRITEL
Centres Of Excellence



NETWORK MANAGEMENT AND DEVELOPMENT

- Development, management, operational and maintenance aspects of telecommunication networks with the aim of enhancing efficiency and quality of service.
- Introduction of new technologies and new services in view of creating sub regional and regional infrastructures.
- Information on ITU regulations, standards, recommendations, procedures and guidelines for the introduction of new technologies and new services in the telecommunication networks.
- Promoting technical cooperation among developing countries.
- Implementation of the decisions/recommendations of the World and Regional Telecommunication Development Conferences in programs of the region.



SECTOR REFORM, REGULATION AND POLICY

- Provision of information for policy makers, regulatory bodies and telecommunication operators concerning world trends in telecommunication policy and management, new technologies and their possible repercussions.
- Provision of assistance in restructuring the telecommunications sector.
- Identification and supervision of implementation and monitoring of projects.
- Promotion of development, expansion and operation of telecommunication networks and services.



SECTOR REFORM, REGULATION AND POLICY

Continued

- Sensitize policy makers, regulatory bodies and operators on issues related to the management of critical resources (e.g radio frequency, numbering plan etc) and new technical standards.
- Implementation of the decisions/recommendations of the World and Regional Telecommunications Development conferences in programs concerning the region.



HUMAN RESOURCE MANAGEMENT AND DEVELOPMENT

- Assess training needs in managing and developing new technologies and services for the present and future telecommunication markets.
- Assist in the area of HRD
- Organize workshops to increase skills and develop capacity in different telecommunications fields (i.e management, marketing, distance learning etc.)
- Assistance in up-grading training centres.
- Support to centres of excellence actions.



INTERNATIONAL TELECOMMUNICATION UNION

*Telecommunications Development Bureau
(BDT)*

REGIONAL OFFICE FOR AFRICA



BDT Projects and Activities in Africa

*Ms Chali Tumelo
ITU Senior Advisor for Network Management
And Development for Eastern & Southern Africa
Tel: +251 11 5514977/5514855, Fax: +251 11 5517299
E-mail: chali.tumelo@itu.int*

TOPICS

- ✓ Overview
- ✓ Access Challenges
- ✓ Activities
- ✓ WTDC – 06 Regional Initiatives for Africa
- ✓ Regional Initiatives Projects



*Ms Chali Tumelo
ITU Senior Advisor for Network Management
And Development for Eastern & Southern Africa
Tel: +251 11 5514977/5514855, Fax: +251 11 5517299
E-mail: chali.tumelo@itu.int*

OVERVIEW

EVOLUTION

- Telephony (voice) no longer the only means of information exchange.
- Internet (circuit switching to packet switching), (central office switches to soft-switches)
- Mobility (wired services to wireless services, narrowband to broadband services)



*Ms Chali Tumelo
ITU Senior Advisor for Network Management
And Development for Eastern & Southern Africa
Tel: +251 11 5514977/5514855, Fax: +251 11 5517299
E-mail: chali.tumelo@itu.int*

OVERVIEW

- Convergence (Telecom/IT/Broadcasting, fixed and mobile networks)
- Services with mobility (one type of service to broader range of services)
- Networks (Discrete to integrated, circuit switched to packet switched)
- Challenges (development and management)



*Ms Chali Tumelo
ITU Senior Advisor for Network Management
And Development for Eastern & Southern Africa
Tel: +251 11 5514977/5514855, Fax: +251 11 5517299
E-mail: chali.tumelo@itu.int*

ACCESS CHALLENGES

- Infrastructure (Extension/Modernization of networks (Broadband and IP-Based) for improved access)
- Development/Extension of Access points in rural and underserved areas
- Spectrum management capacity
- Services and Network operations management



*Ms Chali Tumelo
ITU Senior Advisor for Network Management
And Development for Eastern & Southern Africa
Tel: +251 11 5514977/5514855, Fax: +251 11 5517299
E-mail: chali.tumelo@itu.int*

ACCESS CHALLENGES

- Frequency Management, monitoring and control equipment
- Planning and development of Frequency Management assignment database
- NGN numbering plan
- Training, planning and implementation of Broadband services and technologies



*Ms Chali Tumelo
ITU Senior Advisor for Network Management
And Development for Eastern & Southern Africa
Tel: +251 11 5514977/5514855, Fax: +251 11 5517299
E-mail: chali.tumelo@itu.int*

ACTIVITIES

- Technical assistance to Member States in establishing Frequency Management and Monitoring Systems
- Frequency management capacity building through workshops
- Harmonizing policy and regulation in view of convergence



*Ms Chali Tumelo
ITU Senior Advisor for Network Management
And Development for Eastern & Southern Africa
Tel: +251 11 5514977/5514855, Fax: +251 11 5517299
E-mail: chali.tumelo@itu.int*

WTDC-06 Regional Initiatives for Africa

- Human and Institutional capacity building.
- Strengthening and harmonizing policy and regulatory frameworks for integration on African ICT markets.
- Development of Broadband infrastructure and achievement of Regional Interconnectivity.



*Ms Chali Tumelo
ITU Senior Advisor for Network Management
And Development for Eastern & Southern Africa
Tel: +251 11 5514977/5514855, Fax: +251 11 5517299
E-mail: chali.tumelo@itu.int*

WTDC-06 Regional Initiatives for Africa

- ICT Application
- Introduction of New Digital Broadcasting Technologies.



*Ms Chali Tumelo
ITU Senior Advisor for Network Management
And Development for Eastern & Southern Africa
Tel: +251 11 5514977/5514855, Fax: +251 11 5517299
E-mail: chali.tumelo@itu.int*

Regional Initiatives Projects

Development of Broadband Infrastructure and achievement of regional interconnectivity.

- Infrastructure sharing and migration to IP based networks
- Support for the implementation of broadband infrastructure



*Ms Chali Tumelo
ITU Senior Advisor for Network Management
And Development for Eastern & Southern Africa
Tel: +251 11 5514977/5514855, Fax: +251 11 5517299
E-mail: chali.tumelo@itu.int*

CONCLUSION

- Focus on vital issues such as;
 - Laying the foundation for more cost-effective access and delivery of broad range of services to connect the remote, rural and underserved areas.
 - Development of networks on which integration of national and global economy would depend
 - National and regional infrastructure to form part of the GII where NGN will play a central role.



*Ms Chali Tumelo
ITU Senior Advisor for Network Management
And Development for Eastern & Southern Africa
Tel: +251 11 5514977/5514855, Fax: +251 11 5517299
E-mail: chali.tumelo@itu.int*

THANK YOU VERY MUCH FOR
YOUR ATTENTION



Ms Chali Tumelo
ITU Senior Advisor for Network Management
And Development for Eastern & Southern Africa
Tel: +251 11 5514977/5514855, Fax: +251 11 5517299
E-mail: chali.tumelo@itu.int

THANK YOU VERY MUCH FOR
YOUR ATTENTION

