

III. Points of Improvements in SMS4DC

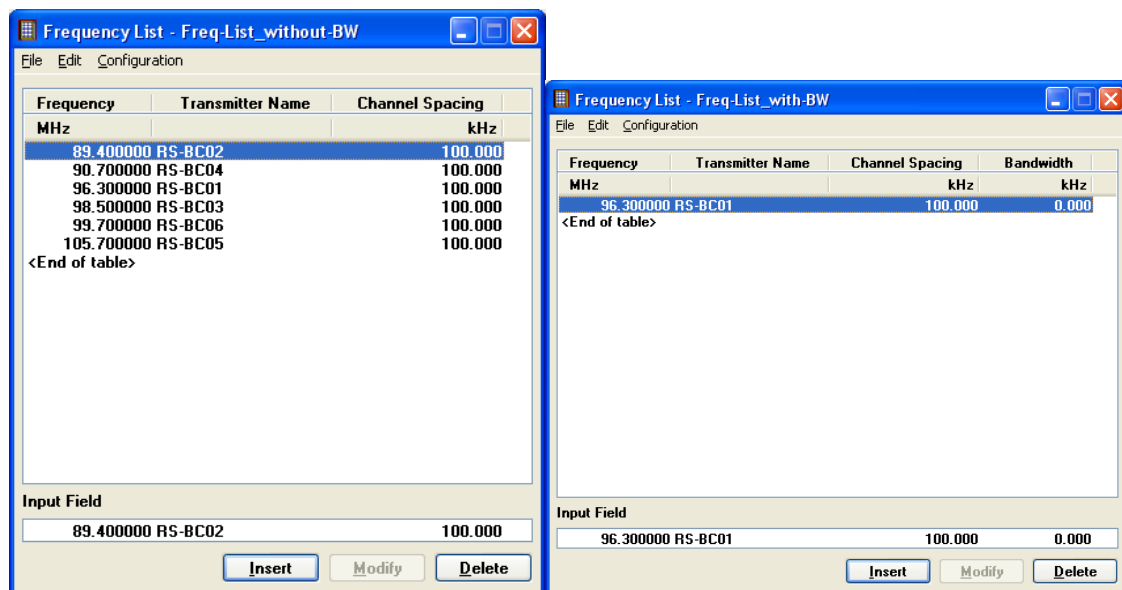
A. SMDI

1. By importing frequency-lists with bandwidth:
All frequencies and not only the first one (1) frequency have to be reported by SMS4DC.

Seems to be OK.

ROHDE & SCHWARZ - 2009-03-09: Test Not Ok

Still the same, only the first one (1) will be reported by SMS4DC by importing frequency-lists with bandwidth.



SMS4DC note – 2009-03-15:

- As the process of preparation of the results is dependant on so many data items, please let us have a copy of your SMS-NEW.MDB file o be able to regenerate the situation.

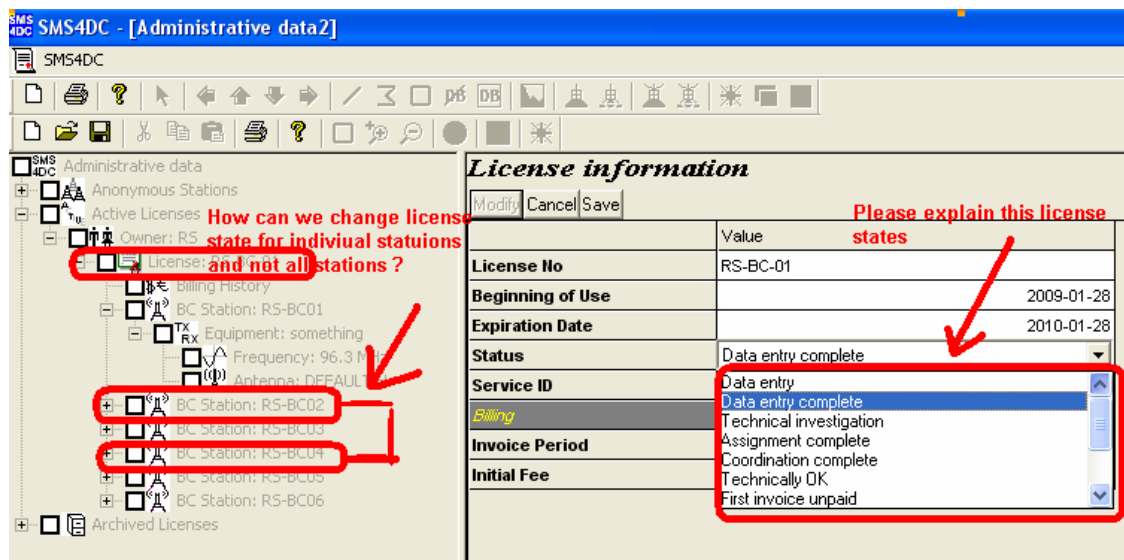
2. Filtering Transmitter Lists by License-State, which are not available (inside the SMS4DC-database have to be handled in the correct way.

Doned

ROHDE & SCHWARZ - 2009-03-09: Not Tested, because we were not able to change license state per station.

Please explain:

1. where we can change the license state
2. the meaning of Service ID
3. how we can change license state for individual stations and not for all stations ?



SMS4DC note – 2009-03-15:

- 1- By modifying the License information (as shown in the right side of the picture above) you may change the status. The complete descriptions of the values are available in the manual of SMS4DC.
- 2- As each license can ONLY cover one service type, the service type should be selected at the license level. In the list:
 - a. B stands for Broadcasting service
 - b. MT stands for Land Mobile
 - c. F stands for Fixed
 - d. And the rest of the list is used for Earth Stations
- 3- License state is for license and does not reflect the Station state.

B. GSP-ORDER

1. Simplification have to be done (by without showing a separate window).

Done

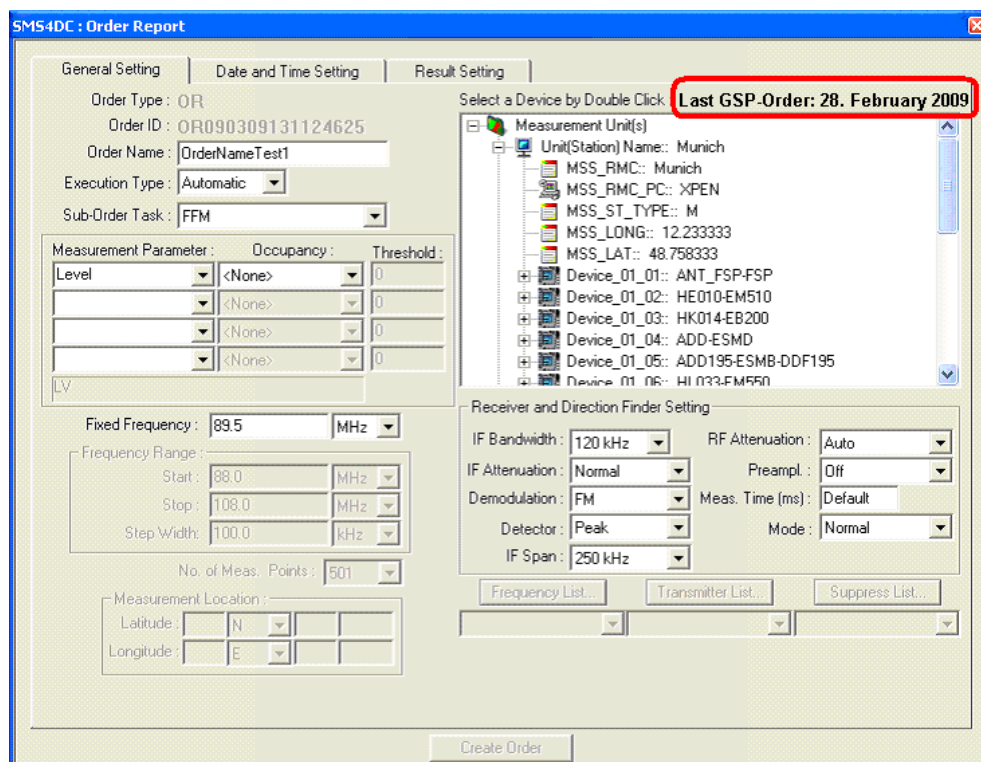
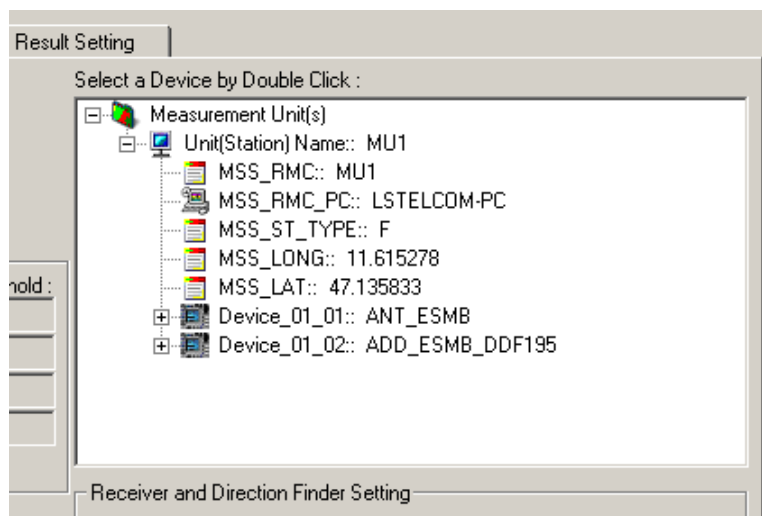
ROHDE & SCHWARZ - 2009-03-09: Test Ok

C. ORM - General Setting-Window

1. The button "Load System Parameters" have to be removed.
By default, the result of the last GSP-Order-Result have to be displayed.

Done

ROHDE & SCHWARZ - 2009-03-09:
Generally Test Ok, with following note:
The date of the last GSP-order should be visualized.
(see example-screenshot).



SMS4DC note – 2009-03-15:

- OK, Done.

Annex B

2. The window of the GSP-result have to be simplified.
Only signal-pathes have to be displayed (without the device-details).

The amount and type of information which are shown are very useful to help the operator to learn the capabilities and limitations of the devices. Therefore we keep it as it is but with minor changes.

ROHDE & SCHWARZ - 2009-03-09: Test Ok

3. Frequency-Lists and Suppress-Lists have to be sorted by frequency-value in increasing row.

Done

ROHDE & SCHWARZ - 2009-03-09: Test Ok

4. The Drop-Down-List for FL, TL, SL should be empty by default.

Done

ROHDE & SCHWARZ - 2009-03-09: Test Ok

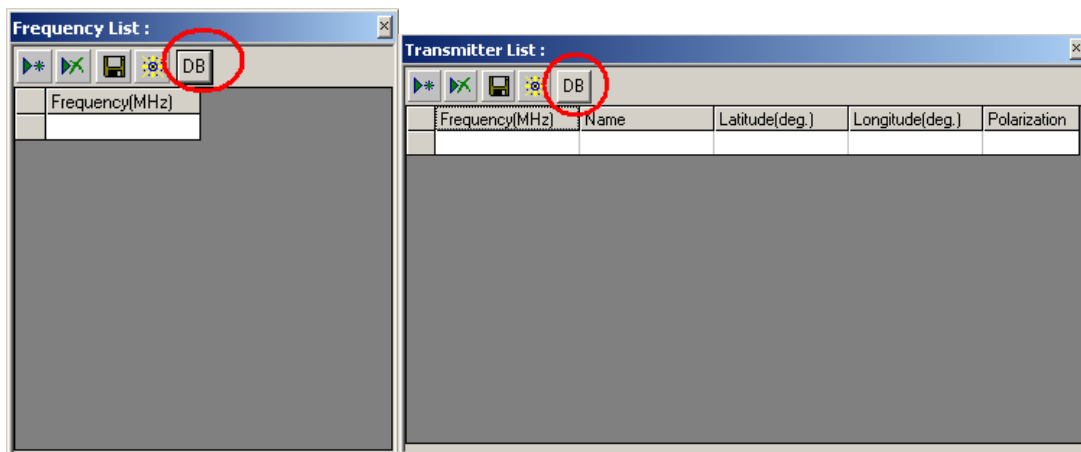


5. For easier way of handling TL and FL: Creation-mechanism for TL and FL should be implemented.

Done

ROHDE & SCHWARZ - 2009-03-09: Test partially Ok

- Remark_1: By empty Frequency-list: Clicking the “Frequency-List ...” -Button opens the Frequency-List; editing and saving is possible but this list can never selected (It will be stored on disk with the name FL_.txt).
- Remark_2: Clicking the disk-icon (Save List): It would be better to open the windows-explorer-functionality with “Save as”.



SMS4DC note – 2009-03-15:

- 1- OK, Solved.
- 2- As the system automatically checks the default folder for the existence of these files and the naming convention of these files is very important. Therefore the user should not be able to change the folder or name of these files.

6. The ORM-parameter ANT_MODE have to changed from FIX to POS (only for TLS).

Done

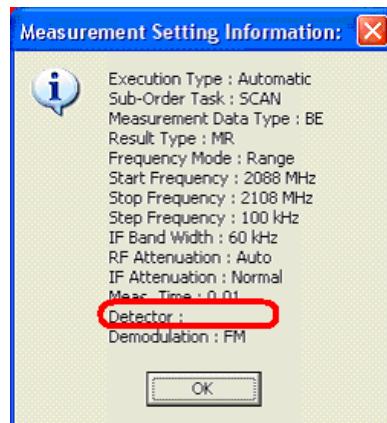
D. Draw-Output-Window

1. An additional window with the measurement-settings should be displayed.

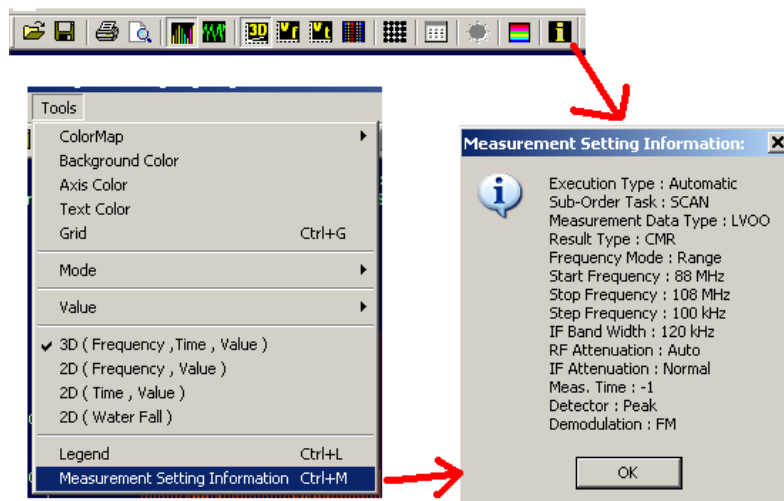
Done

ROHDE & SCHWARZ - 2009-03-09: Test generally Ok with following 2 questions:

1. Is it a bug or a feature, that some parameters are visualized but without a value (example: Detector) ?



2. Moving this window in a 3D-waterfall-diagramm causes a re-drawing of the 3D-waterfall-diagramm. Could this be optimized ?



SMS4DC note – 2009-03-15:

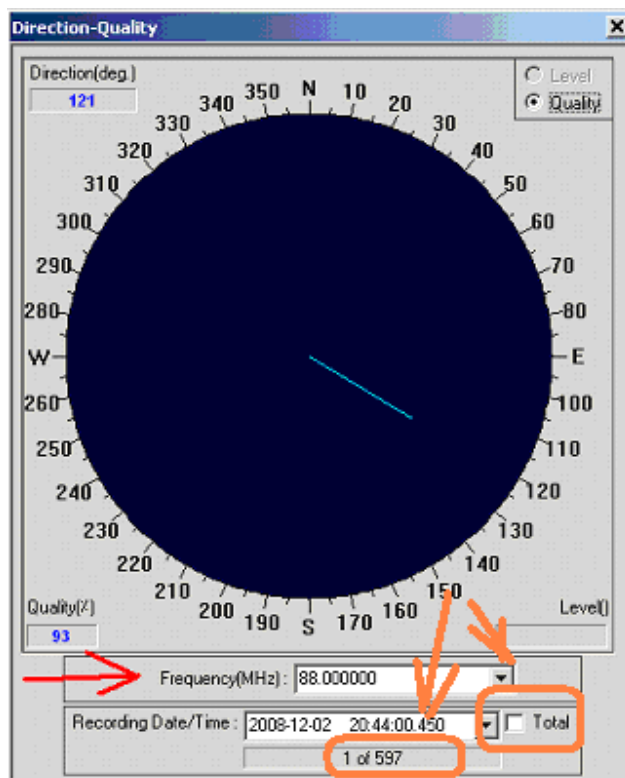
- 1- The values of those parameters are directly taken from the result XML files. Please check your result file and the values of all the parameters.
- 2- We will work on it.

2. The direction-window should be extended with the functionality for selection of a frequency.

Done

ROHDE & SCHWARZ - 2009-03-09: Test generally Ok with following question:

1. Is it intended in future also to select one specific value (in the example n of 597) or only the first and Total ?



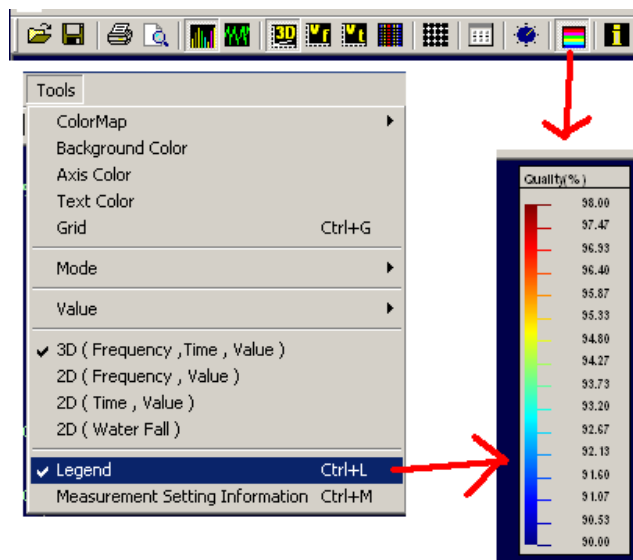
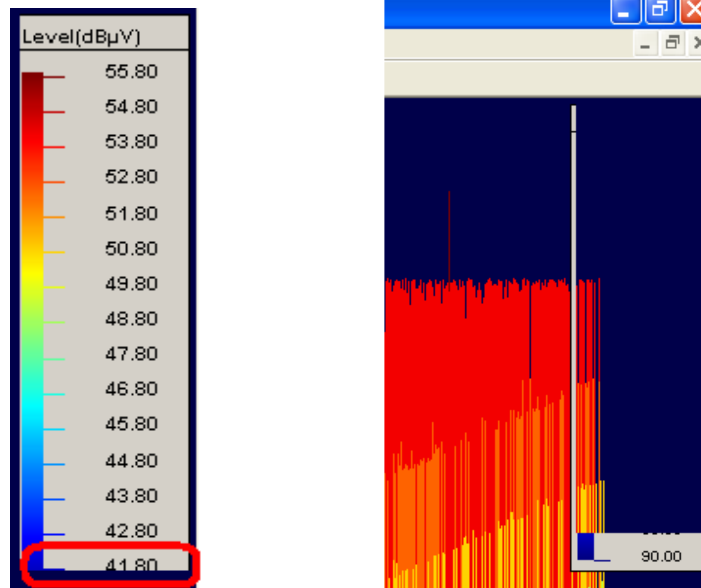
SMS4DC note – 2009-03-15:

- You can select each value.

3. A color-legend should be introduced.
Done

ROHDE & SCHWARZ - 2009-03-09: Test generally Ok with following remark:

1. In most cases of the tests, the color-graph is truncated on the bottom and sometimes also destroyed:

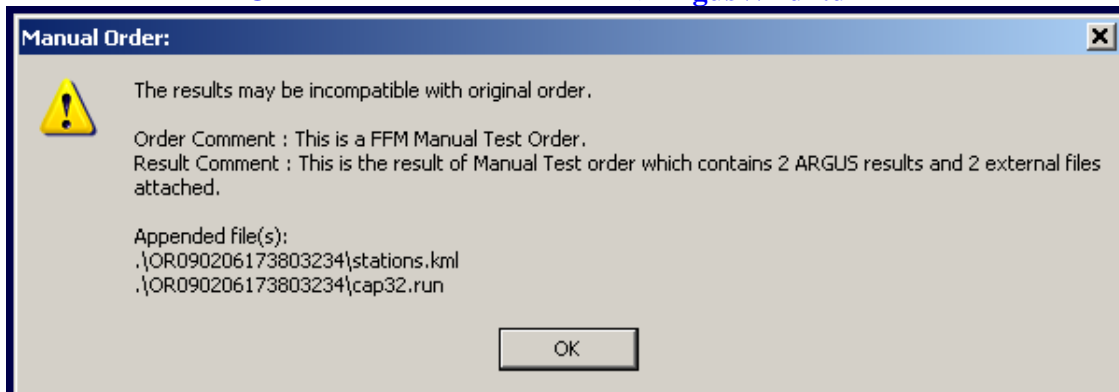


SMS4DC note – 2009-03-15:

- Please check again with the new patch.

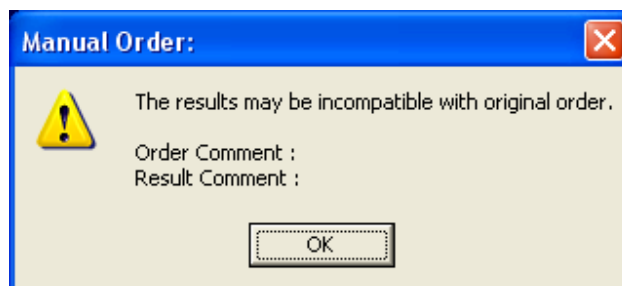
4. By displaying measurement-results from "manual-orders":
An additional-window should be visualized with informations from the order and the response including the appended files.

===== OK =====>ArgusWFdll.dll



ROHDE & SCHWARZ - 2009-03-09: Test generally Ok with following remark:

1. The order- and Result- Comment are empty



2. Opening the Measurement-Settings-Information of a manual-order opens the parameter of the commanded manual-order and not the informations of the replied measurement-result by ARGUS.
Best case: In case of incompatibility between ordered measurement by SMS4DC and replied measurement-result by ARGUS: Both informations should be visualized.

SMS4DC note – 2009-03-15:

- 1- There seems you have not entered any comments for the order and the result. Those values are taken from the result file automatically.
- 2- There may be more than one result attached to a manual order. What shall be done in that case? (e.g. If 10 results are attached to the order, shall SMS4DC show all 10 results and their parameters?)