

Denmark

QUESTIONNAIRE-PART I

(To be completed by both Administrations and Sector members, if relevant)

Specific Questions on National Radio Frequency Spectrum Management

1. Information on national radio frequency spectrum allocations: 29.7-960 MHz

- a) If you have published a National Table of Radio Frequency Spectrum Allocations, please submit a copy (either in electronic, or printed form, or both) of that table along with your responses to the attached questionnaire.

The Danish allocation table is attached. Greenland is located in region 2. No separate allocation table is available for Greenland but the frequency plan generally follows the ITU Radio Regulations for region 2.

- b) If you do not have a national frequency allocations table available, the attached modified extract from Article S.5 of the Radio Regulations may be used to indicate general information on how this range of frequencies is used by your administration within your national borders.

In using the attached modified extract of the International Frequency Allocations table presented in the excerpt from the Radio Regulations Article S.5, you, as a resposdee from an administration or industry, are invited to enter the following information. In the column designated "National Allocations", resposdees from administrations are requested to enter the name of the radiocommunications service (using the ITU terminology given in Article S1 of the Radio Regulations, such as FIXED, MOBILE, space research, radio astronomy...) that is allocated use of a given frequency band. In the column designated "Remarks", 1) resposdees from administrations are invited to enter further technical specifications, if any, that have been established nationally for a given band such as channel spacing, limitations on radiated signal power...; and 2) resposdees from industry are invited to enter the operating parameters such as channel spacing, radiated signal power capabilities,...., of products available for operation in a given frequency band.

2 Identification of a focal point regarding correspondence on this questionnaire (Parts I and II)

Please identify a focal point in your administration/organization who could provide a response to further correspondence regarding this questionnaire (see hereafter).

Denmark

**FOCAL POINT REGARDING CORRESPONDENCE ON THIS QUESTIONNAIRE
(PARTS I AND II)**

1. Mr. Mortensen _____ Claus B. _____
Family Name First Name
2. Country Denmark _____
3. Name of the Administration/Organization The National Telecom Agency _____
4. Title Master of Law/Economics Officer _____
5. Address Holsteinsgade 63, DK-2100 Copenhagen, DENMARK _____

6. Tel.: +45 35 45 02 31 Fax: +45 35 45 00 16 E-Mail: cbm@tst.dk _____

*To be returned no later than **31 January 2000** to:
ITU-D Study Groups Secretariat
Telecommunication Development Bureau
Fax: +41 22 730 54 84
E-Mail: devsg2@itu.int*

Denmark

Section IV – Table of Frequency Allocations (extract from the RR, 1998)

27.5-47 MHz

Read only			To be completed	
Allocation to services				
Region 1	Region 2	Region 3	National Allocation	Remarks
27.5-28	METEOROLOGICAL AIDS FIXED MOBILE		Allocation table attached.	Greenland is located in region 2. Greenland has no separate allocation table. The frequency plan follows the ITU Radio Regulation for region 2.
28-29.7	AMATEUR AMATEUR-SATELLITE			
29.7-30.005	FIXED MOBILE			
30.005-30.01	SPACE OPERATION (satellite identification) FIXED MOBILE SPACE RESEARCH			
30.01-37.5	FIXED MOBILE			
37.5-38.25	FIXED MOBILE Radio astronomy S5.149			
38.25-39.986	FIXED MOBILE			
39.986-40.02	FIXED MOBILE Space research			

**QUESTIONNAIRE-PART II
(To be completed by Administrations only)**

General Questions on National Spectrum Management

Describe succinctly the problems that your administration is currently experiencing in national spectrum management (for example subject areas in national spectrum management).

Country Denmark

Focal point Mr. Robert Lindgaard/Mr. Claus B. Mortensen

The following general questions on national spectrum management are based in part on the functional requirements of spectrum management described in the handbook on "National Spectrum Management." If you need additional space to answer the questions please continue on a separate sheet of paper.

- 1. Do you have a national law governing spectrum management? YES NO
- Last date this law was changed or modified? 17 December 1999
- Are any actions planned to change this law? YES NO

Have any problems been identified? and if so, do you need any assistance from the ITU in solving them?

- 2. Have you published regulations and procedures for national spectrum management (e.g. radio services, license requirements etc.)? YES NO

Have any problems been identified? and if so, do you need any assistance from the ITU in solving them?

- 3. Do you have a national radio frequency spectrum allocation table? YES NO

Have any problems been identified? and if so, do you need any assistance from the ITU in solving them?

Denmark

4. Do you have technical specifications for national spectrum use? YES_X_ NO__

Have any problems been identified? and if so, do you need any assistance from the ITU in solving them?

5. Do you have a need for any spectrum redeployment* ? YES_X_ NO__

* The term "redeployment" is used here to refer to a process of national scope in which an assessment is conducted 1) to determine if portions of spectrum can be identified that are in limited use; and 2) to determine if such spectrum segments can be reallocated for use in delivering radiocommunication services that have expanding spectrum requirements.

- If so, do you have a strategy for achieving this redeployment in respective frequency bands and for given radiocommunication services? YES_X_ NO__

- Please define the established strategy and describe the nature of the consultation, if any, with users regarding the potential costs resulting from the planned redeployment.

Public Tenders regarding FWA, Digital Land Mobile Radio, IMT 2000, 900 MHz band (migration from cellular analogue to cellular digital mobile communications).

6. What is the total cost of national spectrum management functions performed by your Government (expressed in Swiss francs)? 2,500,000

- What is the source of the funding required to accomplish these spectrum management functions?

Spectrum fees and license fees

7. Do you have a method for establishing spectrum users' fees? YES_X_ NO__

- If so, please give a brief description of the method used in establishing those fees.

Licensees pay a fixed user fee of DKr. 175.- plus a spectrum fee in proportion to the use of bandwidth.

8. Do you maintain centralized databases for spectrum management? YES_X_ NO__

- What is the approximate size of your database (expressed in number of records)? 46000

- Do you have a computerized data base management system (DBMS)? YES_X_ NO__

Denmark

- What DBMS system do you use? L&S Spectrum Management System + "ordinary" data base system

- Are these frequency assignment records available to public? YES_X_ NO__

Have any problems been identified? and if so, do you need any assistance from the ITU in solving them?

The "ordinary" data base on the Internet homepage has been unstable

9. Do you notify frequency assignments to the ITU? YES_X_ NO__

Have any problems been identified? and if so, do you need any assistance from the ITU in solving them?

10. Do you have a policy and planning function for national spectrum management (i.e. a national strategy for future use of the spectrum)? YES_X_ NO__

Have any problems been identified? and if so, do you need any assistance from the ITU in solving them?

11. Do you perform technical analyses of frequency assignment requests? YES_X_ NO__

Have any problems been identified? and if so, do you need any assistance from the ITU in solving them?

12. Do you perform radio monitoring? YES_X_ NO__

- number of fixed monitoring stations 1

- facilities available at fixed monitoring stations

-- monitoring up to 2000 MHz

-- direction finding up to 1000 MHz

Denmark

- number of mobile monitoring stations 3

- facilities available at mobile monitoring stations
 - monitoring up to 40000 MHz
 - direction finding up to 40000 MHz

Have any problems been identified? and if so, do you need any assistance from the ITU in solving them?

13. Do you perform technical analyses of radio frequency interference complaints? YES NO

- Do you have an established consultation process, involving Government and non-government organization, for resolving these complaints? YES NO

Have any problems been identified? and if so, do you need any assistance from the ITU in solving them?

14. What computers and operating systems are in use for national spectrum management?

Type of computers PII – 400 MHz

Operating system(s) NT

Have any problems been identified? and if so, do you need any assistance from the ITU in solving them?

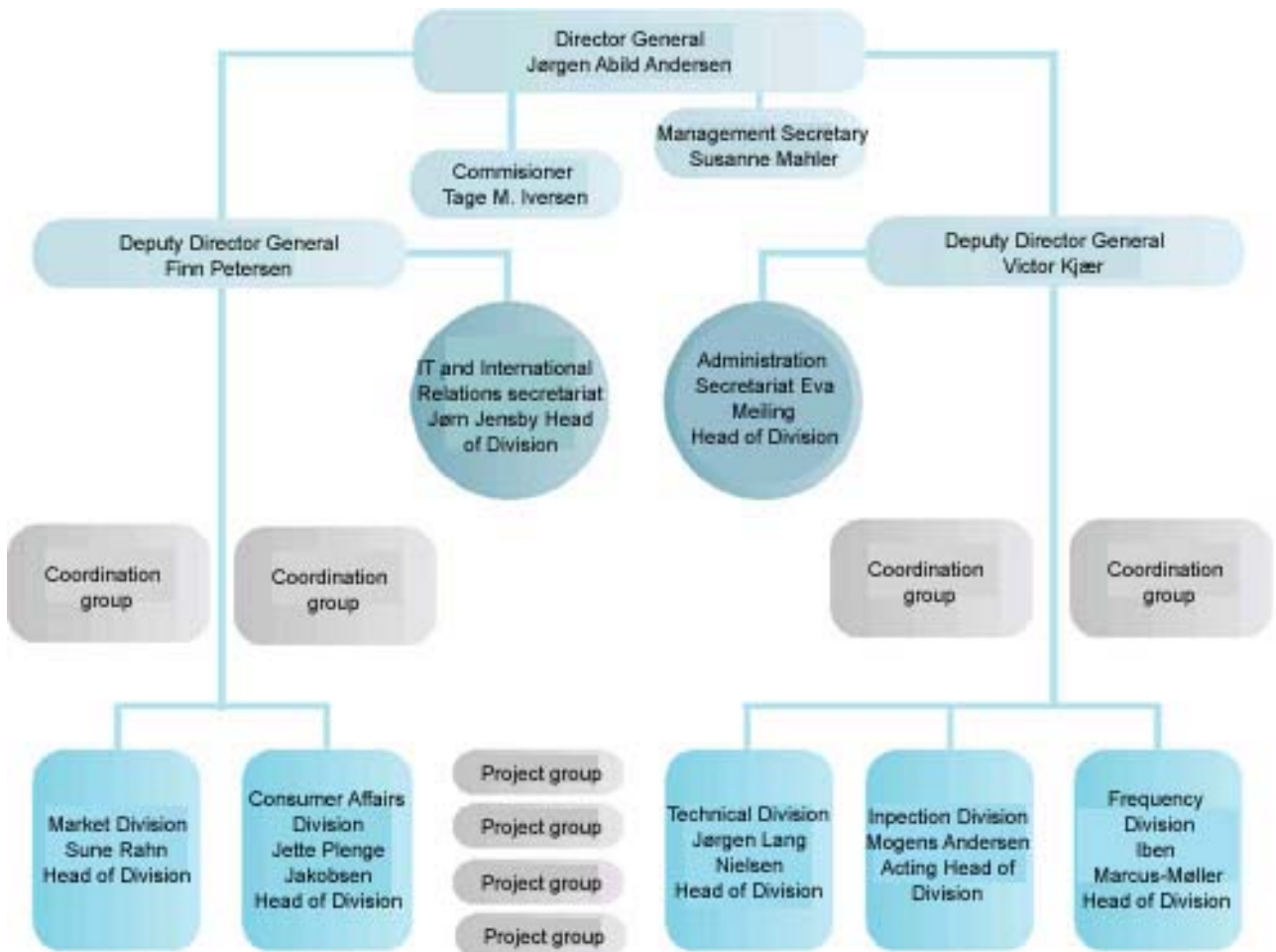
15. Number of technical/professional staff in national spectrum management? _____

16. Number of support staff in national spectrum management? Total (no. 15 + no. 16): 38

17. Describe your country's spectrum management structure (Please enclose a copy of organization chart).

Organization chart:

Denmark



18. Do you use the ITU-R Handbooks and Reports on:

- a) National Spectrum Management, version 1995 ?
- b) Spectrum Monitoring¹, version 1995?
- c) Computer-aided Techniques for Spectrum Management, version 1999?
- d) HF Broadcasting System Design, version 1999?
- e) Report SM.2012, Economic Aspects of Spectrum Management, version 1997²?
- f) Windows Basic Automated Spectrum Management System (WinBASMS) Software Version 1997, Manual Version 1997

What additional information/handbooks do you need from the ITU?

*To be returned no later than **31 January 2000** to:
ITU-D Study Groups Secretariat
Telecommunication Development Bureau
Fax: +41 22 730 54 84
E-Mail: devsg1@itu.int*

THANK YOU FOR YOUR COOPERATION

¹ The Spectrum Monitoring Handbook is currently being updated, therefore, you are urged to contact Mr Jan Verduijn (NL), the designated Rapporteur from ITU-R Study Group 1, Working Party 1C if you have any comments that you wish included in a future version of this Handbook.

² This Report SM.2012 was updated during the ITU-R Study Group 1 meeting in August 1999. This new version is expected to be available in the three working languages by January 2000.

Denmark

kHz

Frequency band	Danish Allocation
0.0000-9.0000 kHz	S5.54
	Not allocated
9.0000-14.0000 kHz	RADIONAVIGATION
	<p>Low Power Devices: Order No 733.</p> <p>TB 94056 rev. A concerning Low Power Devices with loop antennas.</p> <p>TB 94058 concerning Radio Transmitters with very Low Power</p> <p>TB 97094 concerning Inductive Radio Transmitters with very Low Power</p> <p>ERC/REC 70-03E on Short Range Devices, Annex 9.</p>
14.0000-19.9500 kHz	MARITIME MOBILE
	<p>S5.149</p> <p>Low Power Devices: Order No 733.</p> <p>TB 94056 rev. A concerning Low Power Devices with loop antennas.</p> <p>TB 94058 concerning Radio Transmitters with very Low Power</p> <p>TB 97094 concerning Inductive Radio Transmitters with very Low Power</p> <p>ERC/REC 70-03E on Short Range Devices, Annex 9.</p>
19.9500-20.0500 kHz	STANDARD FREQUENCY AND TIME SIGNAL (20 kHz)
	<p>Low Power Devices: Order No 733.</p> <p>TB 94056 rev. A concerning Low Power Devices with loop antennas.</p> <p>TB 94058 concerning Radio Transmitters with very Low Power</p> <p>TB 97094 concerning Inductive Radio Transmitters with very Low Power</p> <p>ERC/REC 70-03E on Short Range Devices, Annex 9.</p>
20.0500-70.0000 kHz	MARITIME MOBILE
	<p>S5.149</p> <p>Low Power Devices: Order No 733.</p> <p>TB 94056 rev. A concerning Low Power Devices with loop antennas.</p> <p>TB 94058 concerning Radio Transmitters with very Low Power</p>

Denmark

Frequency band	Danish Allocation
	<p>TB 97094 concerning Inductive Radio Transmitters with very Low Power ERC/REC 70-03E on Short Range Devices, Annex 9.</p> <p>50 kHz: ATC (control of 100 kHz)</p>
70.0000-72.0000 kHz	<p>RADIONAVIGATION</p> <hr/> <p>DECCA (will cease operation 31.12.1999)</p> <p>Low Power Devices: Order No 733.</p> <p>TB 94056 rev. A concerning Low Power Devices with loop antennas.</p> <p>TB 94058 concerning Radio Transmitters with very Low Power</p> <p>TB 97094 concerning Inductive Radio Transmitters with very Low Power ERC/REC 70-03E on Short Range Devices, Annex 9.</p>
72.0000-84.0000 kHz	<p>MARITIME MOBILE</p> <hr/> <p>RADIONAVIGATION</p> <hr/> <p>DECCA (will cease operation 31.12.1999)</p> <p>Low Power Devices: Order No 733.</p> <p>TB 94056 rev. A concerning Low Power Devices with loop antennas.</p> <p>TB 94058 concerning Radio Transmitters with very Low Power</p> <p>TB 97094 concerning Inductive Radio Transmitters with very Low Power ERC/REC 70-03E on Short Range Devices, Annex 9.</p>
84.0000-86.0000 kHz	<p>RADIONAVIGATION</p> <hr/> <p>DECCA (will cease operation 31.12.1999)</p> <p>Low Power Devices: Order No 733.</p> <p>TB 94056 rev. A concerning Low Power Devices with loop antennas.</p>

Frequency band	Danish Allocation
	<p>TB 94058 concerning Radio Transmitters with very Low Power</p> <p>TB 97094 concerning Inductive Radio Transmitters with very Low Power</p> <p>ERC/REC 70-03E on Short Range Devices, Annex 9.</p>
86.0000-90.0000 kHz	<p>MARITIME MOBILE</p> <hr/> <p>RADIONAVIGATION</p> <hr/> <p>Low Power Devices: Order No 733.</p> <p>TB 94056 rev. A concerning Low Power Devices with loop antennas.</p> <p>TB 94058 concerning Radio Transmitters with very Low Power</p> <p>TB 97094 concerning Inductive Radio Transmitters with very Low Power</p> <p>ERC/REC 70-03E on Short Range Devices, Annex 9.</p>
90.0000-110.0000 kHz	<p>RADIONAVIGATION [1]</p> <hr/> <p>[1] S5.62</p> <hr/> <p>Low Power Devices: Order No 733.</p> <p>TB 94056 rev. A concerning Low Power Devices with loop antennas.</p> <p>TB 94058 concerning Radio Transmitters with very Low Power</p> <p>TB 97094 concerning Inductive Radio Transmitters with very Low Power</p> <p>ERC/REC 70-03E on Short Range Devices, Annex 9.</p> <p>100 kHz: ATC (power supply)</p>
110.0000-112.0000 kHz	<p>MARITIME MOBILE</p> <hr/> <p>RADIONAVIGATION</p> <hr/> <p>Low Power Devices: Order No 733.</p> <p>TB 94056 rev. A concerning Low Power Devices with loop antennas.</p> <p>TB 94058 concerning Radio Transmitters with very Low Power</p> <p>TB 97094 concerning Inductive Radio Transmitters with very Low Power</p> <p>ERC/REC 70-03E on Short Range Devices, Annex 9.</p>

Denmark

Frequency band	Danish Allocation
112.0000-115.0000 kHz	RADIONAVIGATION
115.0000-117.6000 kHz	RADIONAVIGATION <hr/> Maritime Mobile <hr/> DECCA (will cease operation 31.12.1999) Low Power Devices: Order No 733. TB 94056 rev. A concerning Low Power Devices with loop antennas. TB 94058 concerning Radio Transmitters with very Low Power TB 97094 concerning Inductive Radio Transmitters with very Low Power ERC/REC 70-03E on Short Range Devices, Annex 9.
117.6000-126.0000 kHz	MARITIME MOBILE <hr/> RADIONAVIGATION <hr/> Low Power Devices: Order No 733. TB 94056 rev. A concerning Low Power Devices with loop antennas. TB 94058 concerning Radio Transmitters with very Low Power TB 97094 concerning Inductive Radio Transmitters with very Low Power ERC/REC 70-03E on Short Range Devices, Annex 9.

Denmark

Frequency band	Danish Allocation
126.0000-129.0000 kHz	<p>RADIONAVIGATION</p> <hr/> <p>DECCA (will cease operation 31.12.1999)</p> <p>Low Power Devices: Order No 733.</p> <p>TB 94056 rev. A concerning Low Power Devices with loop antennas.</p> <p>TB 94058 concerning Radio Transmitters with very Low Power</p> <p>TB 97094 concerning Inductive Radio Transmitters with very Low Power</p> <p>ERC/REC 70-03E on Short Range Devices, Annex 9.</p>
129.0000-130.0000 kHz	<p>MARITIME MOBILE</p> <hr/> <p>RADIONAVIGATION</p> <hr/> <p>Low Power Devices: Order No 733.</p> <p>TB 94056 rev. A concerning Low Power Devices with loop antennas.</p> <p>TB 94058 concerning Radio Transmitters with very Low Power</p> <p>TB 97094 concerning Inductive Radio Transmitters with very Low Power</p> <p>ERC/REC 70-03E on Short Range Devices, Annex 9.</p>
130.0000-148.5000 kHz	<p>MARITIME MOBILE</p> <hr/> <p>Low Power Devices: Order No 733.</p> <p>TB 94056 rev. A concerning Low Power Devices with loop antennas.</p> <p>TB 94058 concerning Radio Transmitters with very Low Power</p> <p>130-135 kHz: TB 97094 concerning Inductive Radio Transmitters with very Low Power</p> <p>130-135 kHz: ERC/REC 70-03E on Short Range Devices, Annex 9.</p> <p>135.7-137.8 kHz: Amateur, Order No 734.</p> <p>ERC/REC 62-01E on Amateur Radio</p>
148.5000-255.0000 kHz	<p>BROADCASTING</p> <hr/> <p>Broadcasting: Geneva Agreement 1975</p> <p>Broadcasting (Kalundborg 243 kHz)</p> <p>Low Power Devices: Order No 733.</p> <p>TB 94058 concerning Radio Transmitters with very Low Power</p>

Frequency band	Danish Allocation
255.0000-283.5000 kHz	<p>BROADCASTING</p> <hr/> <p>AERONAUTICAL RADIONAVIGATION</p> <hr/> <p>Low Power Devices: Order No 733.</p> <p>TB 94058 concerning Radio Transmitters with very Low Power</p>
283.5000-315.0000 kHz	<p>MARITIME RADIONAVIGATION (radiobeacons) [1]</p> <hr/> <p>AERONAUTICAL RADIONAVIGATION</p> <hr/> <p>[1] S5.73</p> <hr/> <p>S5.74</p> <hr/> <p>DGPS, Brussels Agreement 1967</p> <p>RARC Geneva Agreement 1985</p> <p>Low Power Devices: Order No 733.</p> <p>285-315 kHz: TB 94056 rev. A concerning Low Power Devices with Loop Antennas</p> <p>TB 94058 concerning Radio Transmitters with very Low Power</p>
315.0000-325.0000 kHz	<p>AERONAUTICAL RADIONAVIGATION</p> <hr/> <p>Maritime Radionavigation (radiobeacons) [1]</p> <hr/> <p>[1] S5.73</p> <hr/> <p>Aeronautical Radiobeacons</p> <p>Low Power Devices: Order No 733.</p> <p>TB 94056 rev. A concerning Low Power Devices with loop antennas.</p> <p>TB 94058 concerning Radio Transmitters with very Low Power</p>
325.0000-405.0000 kHz	<p>AERONAUTICAL RADIONAVIGATION</p> <hr/> <p>Aeronautical Radiobeacons</p> <p>Low Power Devices: Order No 733.</p> <p>325-400 kHz: TB 94056 rev. A concerning Low Power Devices with Loop Antennas</p> <p>TB 94058 concerning Radio Transmitters with very Low Power</p>

Frequency band	Danish Allocation
405.0000-415.0000 kHz	<p data-bbox="544 293 898 331">RADIONAVIGATION [1]</p> <hr/> <p data-bbox="544 367 679 405">[1] S5.76</p> <hr/> <p data-bbox="544 441 963 470">Low Power Devices: Order No 733.</p> <p data-bbox="544 501 1219 530">TB 93039 concerning Maritime MF/HF Radio Equipment.</p> <p data-bbox="544 562 1286 591">TB 94058 concerning Radio Transmitters with very Low Power</p>
415.0000-435.0000 kHz	<p data-bbox="544 633 1110 667">AERONAUTICAL RADIONAVIGATION</p> <hr/> <p data-bbox="544 703 839 736">MARITIME MOBILE</p> <hr/> <p data-bbox="544 777 1377 835">415-435 kHz: Aeronautical Radiobeacons and Maritime Mobile, RARC Geneva Agreement 1985.</p> <p data-bbox="544 871 963 900">Low Power Devices: Order No 733.</p> <p data-bbox="544 931 1219 960">TB 93039 concerning Maritime MF/HF Radio Equipment.</p> <p data-bbox="544 992 1286 1021">TB 94058 concerning Radio Transmitters with very Low Power</p>
435.0000-495.0000 kHz	<p data-bbox="544 1059 887 1093">MARITIME MOBILE [1]</p> <hr/> <p data-bbox="544 1128 999 1162">Aeronautical Radionavigation</p> <hr/> <p data-bbox="544 1198 703 1236">[1] S5.79A</p> <hr/> <p data-bbox="544 1272 632 1305">S5.81</p> <hr/> <p data-bbox="544 1346 1131 1375">Maritime Mobile, RARC Geneva Agreement 1985</p> <p data-bbox="544 1406 812 1435">490 kHz: FC NAVTEX</p> <p data-bbox="544 1467 1275 1496">TB 93013 concerning Maritime MF/HF Radiotelex Equipment.</p> <p data-bbox="544 1527 1219 1556">TB 93039 concerning Maritime MF/HF Radio Equipment.</p> <p data-bbox="544 1588 916 1617">TB 93041 concerning NAVTEX</p> <p data-bbox="544 1648 963 1677">Low Power Devices: Order No 733.</p> <p data-bbox="544 1709 1286 1738">TB 94058 concerning Radio Transmitters with very Low Power</p>

Frequency band	Danish Allocation
495.0000-505.0000 kHz	<p data-bbox="544 293 1002 331">MOBILE (distress and calling)</p> <hr/> <p data-bbox="544 369 632 403">S5.83</p> <hr/> <p data-bbox="544 443 962 472">Maritime Mobile Distress (500 kHz)</p> <p data-bbox="544 504 1436 533">TB 93040 concerning Maritime Radiotelegraph Automatic Alarm Receivers.</p> <p data-bbox="544 564 962 593">Low Power Devices: Order No 733.</p> <p data-bbox="544 624 1284 654">TB 94058 concerning Radio Transmitters with very Low Power</p>
505.0000-526.5000 kHz	<p data-bbox="544 947 887 985">MARITIME MOBILE [1]</p> <hr/> <p data-bbox="544 1021 1110 1059">AERONAUTICAL RADIONAVIGATION</p> <hr/> <p data-bbox="544 1095 703 1133">[1] S5.79A</p> <hr/> <p data-bbox="544 1169 632 1207">S5.81</p> <hr/> <p data-bbox="544 1243 1318 1272">510-526.5 kHz: Maritime Mobile, RARC Geneva Agreement 1985</p> <p data-bbox="544 1303 810 1332">518 kHz: FC NAVTEX</p> <p data-bbox="544 1364 1273 1393">TB 93013 concerning Maritime MF/HF Radiotelex Equipment.</p> <p data-bbox="544 1424 916 1453">TB 93041 concerning NAVTEX</p> <p data-bbox="544 1485 1217 1514">TB 93039 concerning Maritime MF/HF Radio Equipment.</p> <p data-bbox="544 1545 962 1574">Low Power Devices: Order No 733.</p> <p data-bbox="544 1606 1284 1635">TB 94058 concerning Radio Transmitters with very Low Power</p>

Denmark

Frequency band	Danish Allocation
526.5000-1606.5000 kHz	<p>BROADCASTING</p> <hr/> <p>Broadcasting: Geneva Agreement 1975</p> <p>Broadcasting (Kalundborg 1062 kHz)</p> <p>1431 kHz, 1485 kHz, 1584 kHz and 1602 kHz: Danish Broadcasting Channels.</p> <p>Low Power Devices: Order No 733.</p> <p>TB 94058 concerning Radio Transmitters with very Low Power</p> <p>823.5 and 875 kHz: ATC (data transmission)</p>
1606.5000-1625.0000 kHz	<p>MARITIME MOBILE</p> <hr/> <p>S5.92</p> <hr/> <p>FC F1B / DSC, RARC Geneva Agreement 1985</p> <p>TB 93013 concerning Maritime MF/HF Radiotelex Equipment.</p> <p>TB 93014 concerning Digital Selective Calling, DSC.</p> <p>TB 93039 concerning Maritime MF/HF Radio Equipment.</p> <p>Low Power Devices: Order No 733.</p> <p>TB 94058 concerning Radio Transmitters with very Low Power</p>
1625.0000-1635.0000 kHz	<p>RADIOLOCATION</p> <hr/> <p>Argo, Hyperfix, Hi-fix etc. Brussels Agreement 1967</p> <p>Low Power Devices: Order No 733.</p> <p>TB 94058 concerning Radio Transmitters with very Low Power</p>
1635.0000-1800.0000 kHz	<p>MARITIME MOBILE</p> <hr/> <p>S5.92</p> <hr/> <p>1715-1800 kHz: S5.96, 200 kHz for amateur service</p> <p>FC J3E, RARC Geneva Agreement 1985</p> <p>TB 93013 concerning Maritime MF/HF Radiotelex Equipment.</p> <p>TB 93039 concerning Maritime MF/HF Radio Equipment.</p> <p>Low Power Devices: Order No 733.</p> <p>TB 94058 concerning Radio Transmitters with very Low Power</p>

Denmark

Frequency band	Danish Allocation
<p>1800.0000-1810.0000 kHz</p>	<p>RADIOLOCATION</p> <hr/> <p>Argo, Hyperfix, Hi-fix etc. Brussels Agreement 1967</p> <p>Low Power Devices: Order No 733.</p> <p>TB 94058 concerning Radio Transmitters with very Low Power</p>
<p>1810.0000-1830.0000 kHz</p>	<p>FIXED</p> <hr/> <p>MOBILE except Aeronautical Mobile</p> <hr/> <p>Low Power Devices: Order No 733.</p> <p>TB 94058 concerning Radio Transmitters with very Low Power</p> <p>Amateur: Order No 734.</p>
<p>1830.0000-1850.0000 kHz</p>	<p>AMATEUR</p> <hr/> <p>Low Power Devices: Order No 733.</p> <p>TB 94058 concerning Radio Transmitters with very Low Power</p> <p>Amateur: Order No 734.</p>
<p>1850.0000-2000.0000 kHz</p>	<p>FIXED</p> <hr/> <p>S5.92</p> <hr/> <p>S5.96</p> <hr/> <p>DGPS, Brussels Agreement 1967</p> <p>Low Power Devices: Order No 733.</p> <p>TB 94058 concerning Radio Transmitters with very Low Power</p> <p>1850-1900 kHz and 1930-2000 kHz: Amateur, Order No 734.</p>

Denmark

Frequency band	Danish Allocation
2000.0000-2025.0000 kHz	FIXED <hr/> S5.92 <hr/> DGPS, Brussels Agreement 1967 Low Power Devices: Order No 733. TB 94058 concerning Radio Transmitters with very Low Power
2025.0000-2045.0000 kHz	FIXED <hr/> Meteorological Aids [1] <hr/> S5.92 <hr/> [1] S5.104 <hr/> DGPS, Brussels Agreement 1967 Low Power Devices: Order No 733. TB 94058 concerning Radio Transmitters with very Low Power
2045.0000-2160.0000 kHz	MARITIME MOBILE <hr/> S5.92 <hr/> 2060-2142 kHz J3E, RARC Geneva Agreement 1985 2142-2160 kHz NBDP / DSC, RARC Geneva Agreement 1985 2045 kHz and 2048 kHz: ship to coast station, RR Art 60. TB 93013 concerning Maritime MF/HF Radiotelex Equipment. TB 93014 concerning Digital Selective Calling, DSC. TB 93039 concerning Maritime MF/HF Radio Equipment. Low Power Devices: Order No 733. TB 94058 concerning Radio Transmitters with very Low Power
2160.0000-2170.0000 kHz	RADIOLOCATION <hr/> Argo, Hyperfix, Hi-fix etc. Brussels Agreement 1967 Low Power Devices: Order No 733. TB 94058 concerning Radio Transmitters with very Low Power

Denmark

Frequency band	Danish Allocation
<p>2170.0000-2173.5000 kHz</p>	<p>MARITIME MOBILE</p> <hr/> <p>DSC Calling</p> <p>TB 93013 concerning Maritime MF/HF Radiotelex Equipment.</p> <p>TB 93014 concerning Digital Selective Calling, DSC.</p> <p>TB 93039 concerning Maritime MF/HF Radio Equipment.</p> <p>Low Power Devices: Order No 733.</p> <p>TB 94058 concerning Radio Transmitters with very Low Power</p>
<p>2173.5000-2190.5000 kHz</p>	<p>MOBILE (distress and calling)</p> <hr/> <p>S5.108</p> <hr/> <p>S5.109</p> <hr/> <p>S5.110</p> <hr/> <p>S5.111</p> <hr/> <p>2182 kHz: CEPT Rec T/R 34-01 Annex III.</p> <p>TB 93013 concerning Maritime MF/HF Radiotelex Equipment.</p> <p>TB 93014 concerning Digital Selective Calling, DSC.</p> <p>TB 93039 concerning Maritime MF/HF Radio Equipment.</p> <p>TB 95062 concerning Maritime Receiver Equipment (2182 kHz).</p> <p>Low Power Devices: Order No 733.</p> <p>TB 94058 concerning Radio Transmitters with very Low Power</p>
<p>2190.5000-2194.0000 kHz</p>	<p>MARITIME MOBILE</p> <hr/> <p>TB 93013 concerning Maritime MF/HF Radiotelex Equipment.</p> <p>Low Power Devices: Order No 733.</p> <p>TB 94058 concerning Radio Transmitters with very Low Power</p>

Denmark

Frequency band	Danish Allocation
<p>2194.0000-2300.0000 kHz</p>	<p>FIXED</p> <p>MOBILE except Aeronautical Mobile</p> <p>S5.92</p> <hr/> <p>DGPS, Brussels Agreement 1967</p> <p>TB 93013 concerning Maritime MF/HF Radiotelex Equipment.</p> <p>Low Power Devices: Order No 733.</p> <p>TB 94058 concerning Radio Transmitters with very Low Power</p>
<p>2300.0000-2498.0000 kHz</p>	<p>FIXED</p> <hr/> <p>MOBILE except Aeronautical Mobile (R)</p> <hr/> <p>Low Power Devices: Order No 733.</p> <p>TB 94058 concerning Radio Transmitters with very Low Power</p>
<p>2498.0000-2501.0000 kHz</p>	<p>STANDARD FREQUENCY AND TIME SIGNAL (2500 kHz)</p> <hr/> <p>Low Power Devices: Order No 733.</p> <p>TB 94058 concerning Radio Transmitters with very Low Power</p>
<p>2501.0000-2502.0000 kHz</p>	<p>STANDARD FREQUENCY AND TIME SIGNAL</p> <hr/> <p>Space Research</p> <hr/> <p>Low Power Devices: Order No 733.</p> <p>TB 94058 concerning Radio Transmitters with very Low Power</p>
<p>2502.0000-2625.0000 kHz</p>	<p>FIXED</p> <hr/> <p>MOBILE except Aeronautical Mobile</p> <hr/> <p>S5.92</p> <hr/> <p>TB 93013 concerning Maritime MF/HF Radiotelex Equipment.</p> <p>Low Power Devices: Order No 733.</p> <p>TB 94058 concerning Radio Transmitters with very Low Power</p>

Denmark

Frequency band	Danish Allocation
2625.0000-2650.0000 kHz	MARITIME MOBILE <hr/> S5.92 <hr/> TB 93013 concerning Maritime MF/HF Radiotelex Equipment. Low Power Devices: Order No 733. TB 94058 concerning Radio Transmitters with very Low Power
2650.0000-2850.0000 kHz	FIXED <hr/> MOBILE except Aeronautical Mobile (R) <hr/> S5.92 <hr/> Low Power Devices: Order No 733. TB 94058 concerning Radio Transmitters with very Low Power
2850.0000-3025.0000 kHz	AERONAUTICAL MOBILE (R) <hr/> S5.111 <hr/> S5.115 <hr/> Low Power Devices: Order No 733. TB 94058 concerning Radio Transmitters with very Low Power
3025.0000-3155.0000 kHz	AERONAUTICAL MOBILE (OR) <hr/> Civil and Military Low Power Devices: Order No 733. TB 94058 concerning Radio Transmitters with very Low Power

Denmark

Frequency band	Danish Allocation
3155.0000-3200.0000 kHz	MARITIME MOBILE <hr/> FIXED <hr/> S5.116 <hr/> Civil and Military TB 93013 concerning Maritime MF/HF Radiotelex Equipment. Low Power Devices: Order No 733. TB 94058 concerning Radio Transmitters with very Low Power
3200.0000-3230.0000 kHz	FIXED <hr/> MOBILE except Aeronautical Mobile (R) <hr/> S5.116 <hr/> Civil and Military Low Power Devices: Order No 733. TB 94058 concerning Radio Transmitters with very Low Power
3230.0000-3400.0000 kHz	FIXED <hr/> MOBILE except Aeronautical Mobile <hr/> S5.116 <hr/> Civil and Military DGPS, Brussels Agreement 1967 Low Power Devices: Order No 733. TB 94058 concerning Radio Transmitters with very Low Power
3400.0000-3500.0000 kHz	AERONAUTICAL MOBILE (R) <hr/> Low Power Devices: Order No 733. TB 94058 concerning Radio Transmitters with very Low Power

Denmark

Frequency band	Danish Allocation
<p>3500.0000-3800.0000 kHz</p>	<p>AMATEUR</p> <hr/> <p>FIXED</p> <hr/> <p>MOBILE except Aeronautical Mobile</p> <hr/> <p>S5.92</p> <hr/> <p>S5.120</p> <hr/> <p>Civil and Military</p> <p>Low Power Devices: Order No 733.</p> <p>TB 94058 concerning Radio Transmitters with very Low Power</p> <p>Amateur: Order No 734.</p>
<p>3800.0000-3900.0000 kHz</p>	<p>FIXED</p> <hr/> <p>AERONAUTICAL MOBILE (OR)</p> <hr/> <p>Civil and Military</p> <p>Low Power Devices: Order No 733.</p> <p>TB 94058 concerning Radio Transmitters with very Low Power</p>
<p>3900.0000-3950.0000 kHz</p>	<p>AERONAUTICAL MOBILE (OR)</p> <hr/> <p>Civil and Military</p> <p>Low Power Devices: Order No 733.</p> <p>TB 94058 concerning Radio Transmitters with very Low Power</p>
<p>3950.0000-4000.0000 kHz</p>	<p>FIXED</p> <hr/> <p>BROADCASTING</p> <hr/> <p>Civil and Military</p> <p>Low Power Devices: Order No 733.</p> <p>TB 94058 concerning Radio Transmitters with very Low Power</p>

Denmark

Frequency band	Danish Allocation
4000.0000-4063.0000 kHz	<p>FIXED</p> <hr/> <p>MARITIME MOBILE [1]</p> <hr/> <p>[1] S5.127</p> <hr/> <p>Civil and Military</p> <p>TB 93013 concerning Maritime MF/HF Radiotelex Equipment.</p> <p>Low Power Devices: Order No 733.</p> <p>TB 94058 concerning Radio Transmitters with very Low Power</p>
4063.0000-4438.0000 kHz	<p>MARITIME MOBILE [1][2][3][4][5]</p> <hr/> <p>[1] S5.79A</p> <hr/> <p>[2] S5.109</p> <hr/> <p>[3] S5.110</p> <hr/> <p>S5.130</p> <hr/> <p>[4] S5.131</p> <hr/> <p>[5] S5.132</p> <hr/> <p>RR APP 31/APP 16</p> <p>4063-4065 kHz MS Oceanographic 6x0,3 kHz</p> <p>4065-4146 kHz MS J3E paired 27x3 kHz RR APP 25</p> <p>4146-4152 kHz MS/FC J3E non-paired 2x3 kHz</p> <p>4152-4172 kHz MS Special Transmitting System 5x4 kHz</p> <p>4172-4181.75 kHz MS NBDP paired 18x0.5 kHz</p> <p>4181.75-4186.75 kHz MS A1A / A1B Calling</p> <p>4186.75-4202.25 kHz MS A1A / A1B Working 31x0.5 kHz</p> <p>4202.25-4207.25 kHz MS Special Transmitting System (non-paired) 10x0.5 kHz</p> <p>4207.25-4209.25 kHz MS DSC Calling 4x0.5 kHz</p> <p>4209.25-4219.25 kHz FC NBDP paired 20x0.5 kHz</p> <p>4219.25-4221kHz FC DSC Calling 3x0.5 kHz</p>

Denmark

Frequency band	Danish Allocation
	<p>4221-4351 kHz FC A1A / A1B / NBDP</p> <p>4351-4438 kHz FC J3E paired 29x3 kHz RR APP 25</p> <p>TB 93013 concerning Maritime MF/HF Radiotelex Equipment.</p> <p>TB 93014 concerning Digital Selective Calling, DSC.</p> <p>TB 93039 concerning Maritime MF/HF Radio Equipment.</p> <p>Low Power Devices: Order No 733.</p> <p>TB 94058 concerning Radio Transmitters with very Low Power</p>
<p>4438.0000-4650.0000 kHz</p>	<p>FIXED</p> <hr/> <p>MOBILE except Aeronautical Mobile (R)</p> <hr/> <p>Civil and Military</p> <p>Low Power Devices: Order No 733.</p> <p>TB 94058 concerning Radio Transmitters with very Low Power</p>
<p>4650.0000-4700.0000 kHz</p>	<p>AERONAUTICAL MOBILE (R)</p> <hr/> <p>Low Power Devices: Order No 733.</p> <p>TB 94058 concerning Radio Transmitters with very Low Power</p>
<p>4700.0000-4750.0000 kHz</p>	<p>AERONAUTICAL MOBILE (OR)</p> <hr/> <p>Low Power Devices: Order No 733.</p> <p>TB 94058 concerning Radio Transmitters with very Low Power</p>
<p>4750.0000-4850.0000 kHz</p>	<p>FIXED</p> <hr/> <p>AERONAUTICAL MOBILE (OR)</p> <hr/> <p>Civil and Military</p> <p>Low Power Devices: Order No 733.</p> <p>TB 94058 concerning Radio Transmitters with very Low Power</p>

Denmark

Frequency band	Danish Allocation
4850.0000-4995.0000 kHz	FIXED <hr/> Civil and Military Low Power Devices: Order No 733. TB 94058 concerning Radio Transmitters with very Low Power
4995.0000-5003.0000 kHz	STANDARD FREQUENCY AND TIME SIGNAL (5000 kHz) <hr/> Low Power Devices: Order No 733. TB 94058 concerning Radio Transmitters with very Low Power
5003.0000-5005.0000 kHz	STANDARD FREQUENCY AND TIME SIGNAL <hr/> Space Research <hr/> Low Power Devices: Order No 733. TB 94058 concerning Radio Transmitters with very Low Power
5005.0000-5060.0000 kHz	FIXED <hr/> Civil and Military Low Power Devices: Order No 733. TB 94058 concerning Radio Transmitters with very Low Power
5060.0000-5250.0000 kHz	FIXED <hr/> Mobile except Aeronautical Mobile <hr/> Civil and Military Low Power Devices: Order No 733. TB 94058 concerning Radio Transmitters with very Low Power
5250.0000-5450.0000 kHz	FIXED <hr/> MOBILE except Aeronautical Mobile <hr/> Civil and Military Low Power Devices: Order No 733. TB 94058 concerning Radio Transmitters with very Low Power

Denmark

Frequency band	Danish Allocation
<p>5450.0000-5480.0000 kHz</p>	<p>FIXED</p> <hr/> <p>AERONAUTICAL MOBILE (OR)</p> <hr/> <p>Civil and Military</p> <p>Low Power Devices: Order No 733.</p> <p>TB 94058 concerning Radio Transmitters with very Low Power</p>
<p>5480.0000-5680.0000 kHz</p>	<p>AERONAUTICAL MOBILE (R)</p> <hr/> <p>S5.111</p> <hr/> <p>S5.115</p> <hr/> <p>Low Power Devices: Order No 733.</p> <p>TB 94058 concerning Radio Transmitters with very Low Power</p>
<p>5680.0000-5730.0000 kHz</p>	<p>AERONAUTICAL MOBILE (OR)</p> <hr/> <p>S5.111</p> <hr/> <p>S5.115</p> <hr/> <p>Low Power Devices: Order No 733.</p> <p>TB 94058 concerning Radio Transmitters with very Low Power</p>
<p>5730.0000-5900.0000 kHz</p>	<p>FIXED</p> <hr/> <p>Civil and Military</p> <p>Low Power Devices: Order No 733.</p> <p>TB 94058 concerning Radio Transmitters with very Low Power</p>
<p>5900.0000-5950.0000 kHz</p>	<p>BROADCASTING [1]</p> <hr/> <p>[1] S5.134</p> <hr/> <p>S5.136</p> <hr/> <p>Low Power Devices: Order No 733.</p> <p>TB 94058 concerning Radio Transmitters with very Low Power</p>

Frequency band	Danish Allocation
5950.0000-6200.0000 kHz	<p>BROADCASTING</p> <hr/> <p>Low Power Devices: Order No 733.</p> <p>TB 94058 concerning Radio Transmitters with very Low Power</p>
6200.0000-6525.0000 kHz	<p>MARITIME MOBILE [1][2][3][4]</p> <hr/> <p>[1] S5.109</p> <hr/> <p>[2] S5.110</p> <hr/> <p>[3] S5.130</p> <hr/> <p>[4] S5.132</p> <hr/> <p>RR APP 31/APP 16</p> <p>6200-6224 kHz MS J3E paired 8x3 kHz RR APP 25</p> <p>6224-6233 kHz MS/FC J3E non-paired 3x3 kHz</p> <p>6233-6261 kHz MS Special Transmitting System 7x4 kHz</p> <p>6261-6262.75 kHz MS Oceanographic 5x0.3 kHz</p> <p>6262.75-6275.5 kHz MS NBDP paired 25x0.5 kHz</p> <p>6275.5-6280.75 kHz MS A1A / A1B Calling</p> <p>6280.75-6284.5 kHz MS NBDP paired 8x0.5 kHz</p> <p>6284.5-6300.25 kHz MS A1A / A1B Working 31x0.5 kHz</p> <p>6300.25-6311.75 kHz MS NBDP / Data non-paired 23x0.5 kHz</p> <p>6311.75-6313.75kHz MS DSC Calling 4x0.5 kHz</p> <p>6313.75-6330.75 kHz FC NBDP paired 34x0.5 kHz</p> <p>6330.75-6332.5kHz FC DSC Calling 3x0.5 kHz</p> <p>6332.5-6501 kHz FC A1A / WB / Data / NBDP</p> <p>6501-6525 kHz FC J3E paired 8x3 kHz RR APP 25</p> <p>TB 93013 concerning Maritime MF/HF Radiotelex Equipment.</p> <p>TB 93014 concerning Digital Selective Calling, DSC.</p> <p>TB 93039 concerning Maritime MF/HF Radio Equipment.</p> <p>Low Power Devices: Order No 733.</p> <p>TB 94058 concerning Radio Transmitters with very Low Power</p>

Frequency band	Danish Allocation
6525.0000-6685.0000 kHz	<p>AERONAUTICAL MOBILE (R)</p> <hr/> <p>RR APP 27 aer 2</p> <p>Low Power Devices: Order No 733.</p> <p>TB 94058 concerning Radio Transmitters with very Low Power</p>
6685.0000-6765.0000 kHz	<p>AERONAUTICAL MOBILE (OR)</p> <hr/> <p>RR APP 26</p> <p>Military</p> <p>Low Power Devices: Order No 733.</p> <p>TB 94058 concerning Radio Transmitters with very Low Power</p>
6765.0000-7000.0000 kHz	<p>FIXED</p> <hr/> <p>Land Mobile</p> <hr/> <p>S5.138</p> <hr/> <p>Civil and Military</p> <p>Low Power Devices: Order No 733.</p> <p>6.765-6.795 MHz: TB 94056 rev. A concerning Low Power Devices with Loop Antennas.</p> <p>TB 94058 concerning Radio Transmitters with very Low Power</p> <p>6.765-6.795 MHz: TB 94060 rev. A concerning Low Power Devices with integral Antenna.</p> <p>6.765-6.795 MHz: ERC/REC 70-03E on Short Range Devices, Annex 1 and 9.</p> <p>ERC/DEC (98) 05 on Approval regulations for Short Range Devices (25 MHz to 1000 MHz).</p>
7000.0000-7100.0000 kHz	<p>AMATEUR [1]</p> <hr/> <p>AMATEUR-SATELLITE</p> <hr/> <p>[1] S5.120</p> <hr/> <p>Low Power Devices: Order No 733.</p> <p>TB 94058 concerning Radio Transmitters with very Low Power</p> <p>Amateur: Order No 734.</p>

Denmark

Frequency band	Danish Allocation
<p>7100.0000-7300.0000 kHz</p>	<p>BROADCASTING</p> <hr/> <p>Low Power Devices: Order No 733. TB 94058 concerning Radio Transmitters with very Low Power</p>
<p>7300.0000-7350.0000 kHz</p>	<p>BROADCASTING [1]</p> <hr/> <p>[1] S5.134</p> <hr/> <p>S5.143</p> <hr/> <p>Low Power Devices: Order No 733. TB 94058 concerning Radio Transmitters with very Low Power</p>
<p>7350.0000-8100.0000 kHz</p>	<p>FIXED</p> <hr/> <p>Civil and Military</p> <p>Low Power Devices: Order No 733. TB 94058 concerning Radio Transmitters with very Low Power 7400-8100 kHz: ERC/REC 70-03E on Short Range Devices, Annex 9.</p>
<p>8100.0000-8195.0000 kHz</p>	<p>FIXED</p> <hr/> <p>MARITIME MOBILE</p> <hr/> <p>Civil and Military</p> <p>RR APP 16 section C-2 TB 93013 concerning Maritime MF/HF Radiotelex Equipment. Low Power Devices: Order No 733. TB 94058 concerning Radio Transmitters with very Low Power ERC/REC 70-03E on Short Range Devices, Annex 9.</p>

Frequency band	Danish Allocation
8195.0000-8815.0000 kHz	<p>MARITIME MOBILE [1][2][3][4]</p> <hr/> <p>[1] S5.109</p> <hr/> <p>[2] S5.110</p> <hr/> <p>S5.111</p> <hr/> <p>[3] S5.132</p> <hr/> <p>[4] S5.145</p> <hr/> <p>RR APP 31/APP 16</p> <p>8195-8294 kHz MS J3E paired 33x3 kHz RR APP 25</p> <p>8294-8300 kHz MS FC J3E non-paired 2x3 kHz</p> <p>8300-8340 kHz MS Special Transmitting Systems 10x4 kHz</p> <p>8340.00-8341.75 kHz MS Oceanographic 5x0.3 kHz</p> <p>8341.75-8365.75 kHz MS A1A Working 48x0.5 kHz</p> <p>8365.75-8370.75 kHz MS A1A Calling</p> <p>8370.75-8376.25 kHz MS A1A Working 11x0.5 kHz</p> <p>8376.25-8396.25 kHz MS NBDP paired 40x0.5 kHz</p> <p>8396.25-8414.25 kHz MS NBDP non-paired 36x0.5 kHz</p> <p>8414.25-8416.25 kHz MS DSC Calling 4x0.5 kHz</p> <p>8416.25-8436.25 kHz FC NBDP paired 40x0.5 kHz</p> <p>8436.25-8438.00 kHz FC DSC Calling 3x0.5 kHz</p> <p>8438-8707 kHz FC Special Transmitting Systems</p> <p>8707-8815 kHz FC J3E paired 36x3 kHz RR APP 25</p> <p>TB 93013 concerning Maritime MF/HF Radiotelex Equipment.</p> <p>TB 93014 concerning Digital Selective Calling, DSC.</p> <p>TB 93039 concerning Maritime MF/HF Radio Equipment.</p> <p>Low Power Devices: Order No 733.</p> <p>TB 94058 concerning Radio Transmitters with very Low Power</p> <p>8195-8800 kHz: ERC/REC 70-03E on Short Range Devices, Annex 9.</p>

Denmark

Frequency band	Danish Allocation
<p>8815.0000-8965.0000 kHz</p>	<p>AERONAUTICAL MOBILE (R)</p> <hr/> <p>RR APP 27 aer 2</p> <p>Low Power Devices: Order No 733.</p> <p>TB 94058 concerning Radio Transmitters with very Low Power</p>
<p>8965.0000-9040.0000 kHz</p>	<p>AERONAUTICAL MOBILE (OR)</p> <hr/> <p>RR APP 26</p> <p>Military</p> <p>Low Power Devices: Order No 733.</p> <p>TB 94058 concerning Radio Transmitters with very Low Power</p>
<p>9040.0000-9400.0000 kHz</p>	<p>FIXED</p> <hr/> <p>Civil and Military</p> <p>Low Power Devices: Order No 733.</p> <p>TB 94058 concerning Radio Transmitters with very Low Power</p>
<p>9400.0000-9500.0000 kHz</p>	<p>BROADCASTING [1]</p> <hr/> <p>[1] S5.134</p> <hr/> <p>S5.146</p> <hr/> <p>Low Power Devices: Order No 733.</p> <p>TB 94058 concerning Radio Transmitters with very Low Power</p>
<p>9500.0000-9900.0000 kHz</p>	<p>BROADCASTING</p> <hr/> <p>Low Power Devices: Order No 733.</p> <p>TB 94058 concerning Radio Transmitters with very Low Power</p>
<p>9900.0000-9995.0000 kHz</p>	<p>FIXED</p> <hr/> <p>Civil and Military</p> <p>Low Power Devices: Order No 733.</p> <p>TB 94058 concerning Radio Transmitters with very Low Power</p>

Frequency band	Danish Allocation
10.4500-10.5000 GHz	<p>RADIOLOCATION</p> <p>Amateur</p> <p>Amateur-Satellite</p> <hr/> <p>Amateur: Order No 734.</p> <p>Distance Measurement Equipment</p>
10.5000-10.5500 GHz	<p>FIXED</p> <hr/> <p>MOBILE</p> <hr/> <p>Radiolocation</p> <hr/> <p>Garage Opening Systems</p> <p>Video Links</p> <p>Motion sensors</p> <p>ERC/REC 70-03E on Short Range Devices, Annex 6 .</p> <p>ENG/OB, Cordless Cameras and Temporary Point to Point video links, ERC/REC 25-10E.</p> <p>ERC/REC 12-05E on channeling arrangement.</p>
10.5500-10.6000 GHz	<p>FIXED</p> <hr/> <p>MOBILE except Aeronautical Mobile</p> <hr/> <p>Radiolocation</p> <hr/> <p>Garage Opening Systems</p> <p>Video Links</p> <p>Motion sensors</p> <p>ERC/REC 70-03E on Short Range Devices, Annex 6 .</p> <p>ENG/OB, Cordless Cameras and Temporary Point to Point video links, ERC/REC 25-10E.</p> <p>ERC/REC 12-05E on channeling arrangement.</p>

Frequency band	Danish Allocation
10.6000-10.6800 GHz	<p>EARTH EXPLORATION-SATELLITE (passive)</p> <hr/> <p>FIXED</p> <hr/> <p>MOBILE except Aeronautical Mobile</p> <hr/> <p>RADIO ASTRONOMY</p> <hr/> <p>SPACE RESEARCH (passive)</p> <hr/> <p>Radiolocation</p> <hr/> <p>S5.149</p> <hr/> <p>S5.482</p> <hr/> <p>Garage Opening Systems</p> <p>Video Links</p> <p>ENG/OB, Cordless Cameras and Temporary Point to Point video links, ERC/REC 25-10E.</p> <p>ERC/REC 12-05E on channeling arrangement.</p>
10.6800-10.7000 GHz	<p>EARTH EXPLORATION-SATELLITE (passive)</p> <hr/> <p>RADIO ASTRONOMY</p> <hr/> <p>SPACE RESEARCH (passive)</p> <hr/> <p>All emissions are prohibited (S5.340)</p>
10.7000-11.7000 GHz	<p>FIXED</p> <hr/> <p>FIXED-SATELLITE (Earth-space) (space-Earth) [1][2]</p> <hr/> <p>[1] S5.441</p> <hr/> <p>[2] S5.484</p> <hr/> <p>10.7-10.95 and 11.2-11.45 GHz: Radio Relay Systems will not be expanded due to possible interference with Satellite Service</p> <p>10.95-11.20 GHz and 11.45-11.70 GHz: Land Mobile Satellite Service (LMSS), Order No 733.</p>

Denmark

Frequency band	Danish Allocation
	<p>VSAT and SNG down link.</p> <p>INTELSAT and EUTELSAT Earth Stations. TVRO from Satellites 63E-45W.</p> <p>ERC/REC 21-15E on free circulation and use for land mobile satellite service terminals.</p> <p>TB 96072 concerning VSAT Satellite Earth Stations</p> <p>TB 96073 concerning SNG Satellite Earth Stations</p> <p>TB 97089 concerning Land Mobile Earth Stations (LMES)</p>
11.7000-12.5000 GHz	<p>BROADCASTING-SATELLITE</p> <hr/> <p>S5.487</p> <hr/> <p>S5.487A</p> <hr/> <p>Danish channels 12, 16, 20, 24 and 36. Joint channels with Iceland 27 and 35. RR APP S30.</p> <p>TVRO from several Satellites</p>
12.5000-12.7500 GHz	<p>FIXED-SATELLITE (Earth-space) (space-Earth)</p> <hr/> <p>Fixed</p> <hr/> <p>Mobile except Aeronautical Mobile</p> <hr/> <p>S5.441A</p> <hr/> <p>VSAT and SNG down link.</p> <p>Land Mobile Satellite Stations, Order No 733.</p> <p>ERC/REC 21-15E on free circulation and use for land mobile satellite service terminals.</p> <p>TB 96072 concerning VSAT Satellite Earth Stations</p> <p>TB 96073 concerning SNG Satellite Earth Stations</p> <p>TB 97089 concerning Land Mobile Earth Stations (LMES)</p>
12.7500-13.2500 GHz	<p>FIXED</p> <hr/> <p>FIXED-SATELLITE (Earth-space) [1]</p> <hr/> <p>Space Research (deep space)(space-Earth)</p> <hr/> <p>[1] S5.441</p>

Denmark

Frequency band	Danish Allocation
	Fixed Links, ERC/REC 12-02E

Frequency band	Danish Allocation
13.2500-13.4000 GHz	AERONAUTICAL RADIONAVIGATION [1]
	EARTH EXPLORATION-SATELLITE (active)
	SPACE RESEARCH (active)
	[1] S5.497
	S5.498A
	Civil and Military
13.4000-13.7500 GHz	RADIOLOCATION
	EARTH EXPLORATION-SATELLITE (active)
	SPACE RESEARCH
	Standard Frequency and Time Signal-Satellite (Earth-space)
	S5.501A
	S5.501B
Military, Radiolocation ERC/REC 70-03E on Short Range Devices, Annex 6-under study.	
13.7500-14.0000 GHz	RADIOLOCATION
	FIXED-SATELLITE (Earth-space) [1]
	Standard Frequency and Time Signal-Satellite (Earth-space)
	Space Research
	[1] S5.441A
	S5.502
	S5.503
	S5.503A
Military, Radiolocation ERC/REC 70-03E on Short Range Devices, Annex 6-under study.	

Frequency band	Danish Allocation
14.0000-14.2500 GHz	<p>FIXED-SATELLITE (Earth-space) [1][2]</p> <hr/> <p>Space Research</p> <hr/> <p>Mobile-Satellite except Aeronautical Mobile-Satellite</p> <hr/> <p>[1] S5.441A</p> <hr/> <p>[2] S5.506</p> <hr/> <p>Uplink to INTELSAT and EUTELSAT Satellites.</p> <p>VSAT and SNG up-link earth stations.</p> <p>TB 96072 concerning VSAT Satellite Earth Stations</p> <p>TB 96073 concerning SNG Satellite Earth Stations</p> <p>Land Mobile Satellite Stations, Order No 733.</p> <p>TB 97089 concerning Land Mobile Earth Stations (LMES)</p> <p>EUTELTRACS</p> <p>ERC/REC 21-15E on free circulation and use for land mobile satellite service terminals.</p>
14.2500-14.3000 GHz	<p>FIXED-SATELLITE (Earth-space) [1][2]</p> <hr/> <p>FIXED</p> <hr/> <p>Mobile-Satellite except Aeronautical Mobile-Satellite</p> <hr/> <p>Space Research</p> <hr/> <p>[1] S5.441A</p> <hr/> <p>[2] S5.506</p> <hr/> <p>Uplink to INTELSAT and EUTELSAT Satellites.</p> <p>VSAT and SNG up-link earth stations.</p> <p>TB 96072 concerning VSAT Satellite Earth Stations</p> <p>TB 96073 concerning SNG Satellite Earth Stations</p>

Frequency band	Danish Allocation
14.3000-14.4000 GHz	<p>FIXED-SATELLITE (Earth-space) [1][2]</p> <hr/> <p>FIXED</p> <hr/> <p>MOBILE except Aeronautical Mobile</p> <hr/> <p>Mobile-Satellite except Aeronautical Mobile-Satellite</p> <hr/> <p>Radionavigation-Satellite</p> <hr/> <p>[1] S5.441A</p> <hr/> <p>[2] S5.506</p> <hr/> <p>Uplink to INTELSAT and EUTELSAT Satellites. VSAT and SNG up-link earth stations. TB 96072 concerning VSAT Satellite Earth Stations TB 96073 concerning SNG Satellite Earth Stations</p>
14.4000-14.4700 GHz	<p>FIXED-SATELLITE (Earth-space) [1][2]</p> <hr/> <p>FIXED</p> <hr/> <p>MOBILE except Aeronautical Mobile</p> <hr/> <p>Mobile-Satellite except Aeronautical Mobile-Satellite</p> <hr/> <p>Space Research (space-Earth)</p> <hr/> <p>[1] S5.441A</p> <hr/> <p>[2] S5.506</p> <hr/> <p>Uplink to INTELSAT and EUTELSAT Satellites. VSAT and SNG up-link earth stations. TB 96072 concerning VSAT Satellite Earth Stations TB 96073 concerning SNG Satellite Earth Stations</p>
14.4700-14.5000 GHz	<p>FIXED-SATELLITE (Earth-space) [1][2]</p> <hr/> <p>FIXED</p> <hr/> <p>MOBILE except Aeronautical Mobile</p>

Frequency band	Danish Allocation
	<p>Mobile-Satellite except Aeronautical Mobile-Satellite</p> <hr/> <p>Radio Astronomy</p> <hr/> <p>S5.149</p> <hr/> <p>[1] S5.441A</p> <hr/> <p>[2] S5.506</p> <hr/> <p>Uplink to INTELSAT and EUTELSAT Satellites. VSAT and SNG up-link earth stations. TB 96072 concerning VSAT Satellite Earth Stations TB 96073 concerning SNG Satellite Earth Stations</p>
14.5000-14.8000 GHz	<p>FIXED</p> <hr/> <p>Space Research</p> <hr/> <p>Civil and Military 14.5-14.620 GHz: Fixed Links, ERC/REC 12-07E. 14.62-14.80 GHz: Military</p>
14.8000-15.3500 GHz	<p>FIXED</p> <hr/> <p>Space Research</p> <hr/> <p>S5.339</p> <hr/> <p>14.80-15.23 GHz: Military 15.230-15.350 GHz: Fixed Links, ERC/REC 12-07E.</p>
15.3500-15.4000 GHz	<p>EARTH EXPLORATION-SATELLITE (passive)</p> <hr/> <p>RADIO ASTRONOMY</p> <hr/> <p>SPACE RESEARCH (passive)</p> <hr/> <p>All emissions are prohibited (S5.340)</p> <hr/> <p>Passive applications</p>

Denmark

Frequency band	Danish Allocation
15.4000-15.4300 GHz	AERONAUTICAL RADIONAVIGATION
	S5.511D
	Radars
15.4300-15.6300 GHz	FIXED-SATELLITE (Earth-space) (space-Earth) [1][2]
	AERONAUTICAL RADIONAVIGATION [3]
	[1] S5.511A
	[2] S5.511C
	[3] S5.511D
	Radars
15.6300-15.7000 GHz	AERONAUTICAL RADIONAVIGATION
	S5.511D
	Radars
15.7000-16.6000 GHz	RADIOLOCATION
	Civil and Military
16.6000-17.1000 GHz	RADIOLOCATION
	Space Research (deep space)(Earth-space)
	Military
17.1000-17.2000 GHz	RADIOLOCATION
	ERC/REC 70-03E on Short Range Devices, Annex 3 (HIPERLAN)
17.2000-17.3000 GHz	RADIOLOCATION
	EARTH EXPLORATION-SATELLITE (active)
	SPACE RESEARCH (active)
	S5.513A
	ERC/REC 70-03E on Short Range Devices, Annex 3 (HIPERLAN)

Denmark

Frequency band	Danish Allocation
<p>17.3000-17.7000 GHz</p>	<p>FIXED-SATELLITE (Earth-space)</p> <hr/> <p>S5.516</p> <hr/> <p>Danish channels 12, 16, 20, 24 and 36. Joint channels with Iceland 27 and 35. RR APP S30.</p> <p>Feeder links for Broadcasting</p> <p>Wireless local loop under study.</p>
<p>17.7000-18.1000 GHz</p>	<p>FIXED</p> <hr/> <p>FIXED-SATELLITE (Earth-space) (space-Earth) [1][2]</p> <hr/> <p>[1] S5.441A</p> <hr/> <p>[2] S5.516</p> <hr/> <p>Danish channels 12, 16, 20, 24 and 36. Joint channels with Iceland 27 and 35. RR APP S30.</p> <p>Feeder links for Broadcasting</p> <p>Fixed Links: ERC/REC 12-03E</p> <p>Wireless local loop under study.</p>
<p>18.1000-18.4000 GHz</p>	<p>FIXED</p> <hr/> <p>FIXED-SATELLITE (Earth-space) (space-Earth) [1][2]</p> <hr/> <p>MOBILE</p> <hr/> <p>S5.519</p> <hr/> <p>[1] S5.520</p> <hr/> <p>S5.521</p> <hr/> <p>[2] S5.441A</p> <hr/> <p>Fixed Links: ERC/REC 12-03E</p>
<p>18.4000-18.6000 GHz</p>	<p>FIXED</p> <hr/> <p>FIXED-SATELLITE (space-Earth) [1]</p> <hr/> <p>[1] S5.441A</p>

Denmark

Frequency band	Danish Allocation
	Fixed Links: ERC/REC 12-03E
18.6000-18.8000 GHz	FIXED
	FIXED-SATELLITE (space-Earth) [1]
	Earth Exploration-Satellite (passive)
	Space Research (passive)
	S5.522
	[1] S5.523
	Fixed Links: ERC/REC 12-03E EESS surface emissivity, snow, sea, ice and precipitation.
18.8000-19.3000 GHz	FIXED
	FIXED-SATELLITE (space-Earth) [1]
	[1] S5.523A
	Fixed Links: ERC/REC 12-03E
19.3000-19.7000 GHz	FIXED
	FIXED-SATELLITE (Earth-space) (space-Earth) [1][2][3][4]
	[1] S5.523B
	[2] S5.523C
	[3] S5.523D
[4] S5.523E	
	Fixed Links: ERC/REC 12-03E
19.7000-20.1000 GHz	FIXED-SATELLITE (space-Earth) [1]
	Mobile-Satellite (space-Earth)
	[1] S5.441A

Denmark

Frequency band	Danish Allocation
20.1000-20.2000 GHz	<p>FIXED-SATELLITE (space-Earth) [1]</p> <p>MOBILE-SATELLITE (space-Earth)</p> <p>S5.526</p> <p>S5.527</p> <p>S5.528</p> <p>[1] S5.441A</p>
20.2000-21.2000 GHz	<p>FIXED-SATELLITE (space-Earth)</p> <hr/> <p>MOBILE-SATELLITE (space-Earth)</p> <hr/> <p>Standard Frequency and Time Signal-Satellite (space-Earth)</p> <hr/> <p>Military</p>
21.2000-21.4000 GHz	<p>EARTH EXPLORATION-SATELLITE (passive)</p> <hr/> <p>FIXED</p> <hr/> <p>MOBILE</p> <hr/> <p>SPACE RESEARCH (passive)</p> <hr/> <p>ENG/OB, Cordless Cameras and Temporary Point to Point video links, ERC/REC 25-10E.</p> <p>ERC/DEC (98) 09 on Approval of Radio Relay systems between 21.2 GHz and 23.6 GHz.</p>
21.4000-22.0000 GHz	<p>FIXED</p> <hr/> <p>BROADCASTING-SATELLITE</p> <hr/> <p>S5.530</p> <hr/> <p>HDTV from 01.04.2007</p>
22.0000-22.2100 GHz	<p>FIXED</p> <hr/> <p>MOBILE except Aeronautical Mobile</p> <hr/> <p>S5.149</p> <hr/> <p>CEPT Rec T/R 13-02 on channeling arrangement.</p> <p>ERC/DEC (98) 09 on Approval of Radio Relay systems between 21.2 GHz and 23.6 GHz.</p>

Frequency band	Danish Allocation
22.2100-22.5000 GHz	<p>EARTH EXPLORATION-SATELLITE (passive)</p> <hr/> <p>FIXED</p> <hr/> <p>RADIO ASTRONOMY</p> <hr/> <p>SPACE RESEARCH (passive)</p> <hr/> <p>S5.149</p> <hr/> <p>S5.532</p> <hr/> <p>CEPT Rec T/R 13-02 on channeling arrangement.</p> <p>ERC/DEC (98) 09 on Approval of Radio Relay systems between 21.2 GHz and 23.6 GHz.</p> <p>Radio Astronomy spectral line observations.</p>
22.5000-22.5500 GHz	<p>FIXED</p> <hr/> <p>CEPT Rec T/R 13-02 on channeling arrangement.</p> <p>ERC/DEC (98) 09 on Approval of Radio Relay systems between 21.2 GHz and 23.6 GHz.</p>
22.5500-23.0000 GHz	<p>FIXED</p> <hr/> <p>INTER-SATELLITE</p> <hr/> <p>MOBILE</p> <hr/> <p>S5.149</p> <hr/> <p>CEPT Rec T/R 13-02 on channeling arrangement.</p> <p>22.6-23.0 GHz: ENG/OB, Cordless Cameras and Temporary Point to Point video links, ERC/REC 25-10E.</p> <p>ERC/DEC (98) 09 on Approval of Radio Relay systems between 21.2 GHz and 23.6 GHz.</p>

Frequency band	Danish Allocation
23.0000-23.5500 GHz	<p>FIXED</p> <hr/> <p>INTER-SATELLITE</p> <hr/> <p>S5.149</p> <p>CEPT Rec T/R 13-02 on channeling arrangement.</p> <p>ERC/DEC (98) 09 on Approval of Radio Relay systems between 21.2 GHz and 23.6 GHz.</p>
23.5500-23.6000 GHz	<p>FIXED</p> <p>CEPT Rec T/R 13-02 on channeling arrangement.</p> <p>ERC/DEC (98) 09 on Approval of Radio Relay systems between 21.2 GHz and 23.6 GHz.</p>
23.6000-24.0000 GHz	<p>EARTH EXPLORATION-SATELLITE (passive)</p> <hr/> <p>RADIO ASTRONOMY</p> <hr/> <p>SPACE RESEARCH (passive)</p> <p>All emissions are prohibited (S5.340)</p>
24.0000-24.0500 GHz	<p>AMATEUR</p> <hr/> <p>AMATEUR-SATELLITE</p> <hr/> <p>S5.150</p> <p>Amateur: Order No 734.</p> <p>ERC/REC 70-03E on Short Range Devices, Annex 1.</p>
24.0500-24.2500 GHz	<p>RADIOLOCATION</p> <hr/> <p>Amateur</p> <hr/> <p>Earth Exploration-Satellite (active)</p> <hr/> <p>S5.150</p> <p>Amateur: Order No 734.</p> <p>24.05-24.25 GHz: Microwave Equipment. Order No 733.</p> <p>TB 94043 rev. A concerning Equipment for Detecting Movement and for Alerts.</p> <p>TB 93038 concerning Maritime Emergency Position Indicating Radio Beacons</p>

Denmark

Frequency band	Danish Allocation
	(EPIRBs)(243 MHz) ERC/REC 70-03E on Short Range Devices, Annex 1 and 6. Motion sensors Radars
24.2500-24.4500 GHz	FIXED Civil and Military ENG/OB, Cordless Cameras and Temporary Point to Point video links, ERC/REC 25-10E.
24.4500-24.6500 GHz	FIXED INTER-SATELLITE 24.5-24.65 GHz: Fixed links, CEPT Rec T/R 13-02. 24.45-24.50 GHz: Possible for ENG/OB, Cordless Cameras and Temporary Point to Point video links, ERC/REC 25-10E.
24.6500-24.7500 GHz	FIXED INTER-SATELLITE CEPT Rec T/R 13-02 on channeling arrangement.
24.7500-25.2500 GHz	FIXED CEPT Rec T/R 13-02 on channeling arrangement.
25.2500-25.5000 GHz	FIXED MOBILE INTER-SATELLITE [1] Standard Frequency and Time Signal-Satellite (Earth-space) [1] S5.536 CEPT Rec T/R 13-02 on channeling arrangement.
25.5000-27.0000 GHz	FIXED MOBILE

Frequency band	Danish Allocation
	<p>INTER-SATELLITE [1]</p> <hr/> <p>EARTH EXPLORATION-SATELLITE (space-Earth) [2]</p> <hr/> <p>Standard Frequency and Time Signal-Satellite (Earth-space)</p> <hr/> <p>[1] S5.536</p> <hr/> <p>S5.536A</p> <hr/> <p>[2] S5.536B</p> <hr/> <p>25.5-26.5 GHz: Fixed links, CEPT Rec T/R 13-02</p> <p>26.5-27.0 GHz: Military</p>
27.0000-27.5000 GHz	<p>FIXED</p> <hr/> <p>MOBILE</p> <hr/> <p>INTER-SATELLITE [1]</p> <hr/> <p>[1] S5.536</p> <hr/> <p>Military</p>
27.5000-28.5000 GHz	<p>FIXED</p> <hr/> <p>FIXED-SATELLITE (Earth-space) [1][2]</p> <hr/> <p>MOBILE</p> <hr/> <p>S5.538</p> <hr/> <p>[1] S5.539</p> <hr/> <p>S5.540</p> <hr/> <p>[2] S5.441A</p> <hr/> <p>ERC/REC 13-02E on channeling arrangement.</p>
28.5000-29.1000 GHz	<p>FIXED</p> <hr/> <p>FIXED-SATELLITE (Earth-space) [1][2][3]</p> <hr/> <p>MOBILE</p>

Frequency band	Danish Allocation
	<p>Earth Exploration-Satellite (Earth-space) [4]</p> <hr/> <p>[1] S5.523A</p> <hr/> <p>[2] S5.539</p> <hr/> <p>S5.540</p> <hr/> <p>[3] S5.441A</p> <hr/> <p>[4] S5.541</p> <hr/> <p>ERC/REC 13-02E on channeling arrangement.</p>
29.1000-29.5000 GHz	<p>FIXED</p> <hr/> <p>FIXED-SATELLITE (Earth-space) [1][2][3][4][6]</p> <hr/> <p>MOBILE</p> <hr/> <p>Earth Exploration-Satellite (Earth-space) [5]</p> <hr/> <p>[1] S5.523C</p> <hr/> <p>[2] S5.523E</p> <hr/> <p>[3] S5.535A</p> <hr/> <p>[4] S5.539</p> <hr/> <p>S5.540</p> <hr/> <p>[5] S5.541</p> <hr/> <p>[6] S5.541A</p> <hr/> <p>ERC/REC 13-02E on channeling arrangement.</p>
29.5000-29.9000 GHz	<p>FIXED-SATELLITE (Earth-space) [1][2]</p> <p>Mobile-Satellite (Earth-space)</p> <p>Earth Exploration-Satellite (Earth-space) [3]</p> <hr/> <p>[1] S5.539</p> <hr/> <p>S5.540</p> <hr/> <p>[2] S5.441A</p> <hr/> <p>[3] S5.541</p>

Frequency band	Danish Allocation
29.9000-30.0000 GHz	FIXED-SATELLITE (Earth-space) [1] MOBILE-SATELLITE (Earth-space) Earth Exploration-Satellite (Earth-space) [2] S5.525 S5.526 S5.527 S5.538 [1] S5.539 S5.540 S5.441A [2] S5.541 S5.543
30.0000-31.0000 GHz	FIXED-SATELLITE (Earth-space) <hr/> MOBILE-SATELLITE (Earth-space) <hr/> Standard Frequency and Time Signal-Satellite (space-Earth) <hr/> Military
31.0000-31.3000 GHz	FIXED MOBILE Standard Frequency and Time Signal-Satellite (space-Earth) Space Research [1] S5.149 [1] S5.544

Frequency band	Danish Allocation
31.3000-31.5000 GHz	EARTH EXPLORATION-SATELLITE (passive) RADIO ASTRONOMY SPACE RESEARCH (passive) All emissions are prohibited (S5.340)
31.5000-31.8000 GHz	EARTH EXPLORATION-SATELLITE (passive) RADIO ASTRONOMY SPACE RESEARCH (passive) Fixed Mobile except Aeronautical Mobile S5.149
31.8000-32.0000 GHz	FIXED [1] RADIONAVIGATION SPACE RESEARCH (deep space)(space-Earth) S5.548 S5.547 [1] S5.547A
32.0000-32.3000 GHz	FIXED [1] INTER-SATELLITE RADIONAVIGATION SPACE RESEARCH (deep space)(space-Earth) S5.548 S5.547 [1] S5.547A

Denmark

Frequency band	Danish Allocation
32.3000-33.0000 GHz	FIXED [1] INTER-SATELLITE RADIONAVIGATION S5.548 S5.547 [1] S5.547A
33.0000-33.4000 GHz	FIXED [1] RADIONAVIGATION S5.547 [1] S5.547A
33.4000-34.2000 GHz	RADIOLOCATION <hr/> Military
34.2000-34.7000 GHz	RADIOLOCATION <hr/> SPACE RESEARCH (deep space)(Earth-space) <hr/> Military
34.7000-35.2000 GHz	RADIOLOCATION <hr/> Space Research <hr/> Military
35.2000-35.5000 GHz	METEOROLOGICAL AIDS <hr/> RADIOLOCATION <hr/> Military

Frequency band	Danish Allocation
35.5000-36.0000 GHz	EARTH EXPLORATION-SATELLITE (active)
	METEOROLOGICAL AIDS
	RADIOLOCATION
	SPACE RESEARCH (active)
	S5.551A Military
36.0000-37.0000 GHz	EARTH EXPLORATION-SATELLITE (passive)
	FIXED
	MOBILE
	SPACE RESEARCH (passive)
	S5.149 Military Snow, ice and precipitation measurements.
37.0000-37.5000 GHz	FIXED
	MOBILE
	SPACE RESEARCH (space-Earth) Fixed links, CEPT Rec T/R 12-01. ERC/DEC (98) 08 on Approval of Radio Relay systems between 37 GHz and 39.5 GHz.
37.5000-38.0000 GHz	FIXED
	FIXED-SATELLITE (space-Earth)
	MOBILE
	SPACE RESEARCH (space-Earth)
	Earth Exploration-Satellite (space-Earth) Fixed links, CEPT Rec T/R 12-01. ERC/DEC (98) 08 on Approval of Radio Relay systems between 37 GHz and

Denmark

Frequency band	Danish Allocation
	39.5 GHz.

Frequency band	Danish Allocation
38.0000-39.5000 GHz	FIXED <hr/> FIXED-SATELLITE (space-Earth) <hr/> MOBILE <hr/> Earth Exploration-Satellite (space-Earth) <hr/> Fixed links, CEPT Rec T/R 12-01. ERC/DEC (98) 08 on Approval of Radio Relay systems between 37 GHz and 39.5 GHz.
39.5000-40.0000 GHz	FIXED FIXED-SATELLITE (space-Earth) MOBILE MOBILE-SATELLITE (space-Earth) Earth Exploration-Satellite (space-Earth)
40.0000-40.5000 GHz	FIXED FIXED-SATELLITE (space-Earth) MOBILE MOBILE-SATELLITE (space-Earth) EARTH EXPLORATION-SATELLITE (Earth-space) SPACE RESEARCH (Earth-space) Earth Exploration-Satellite (space-Earth)
40.5000-42.5000 GHz	BROADCASTING-SATELLITE <hr/> BROADCASTING <hr/> FIXED <hr/> Mobile <hr/> S5.551B <hr/> S5.551E <hr/> CEPT Rec T/R 52-01 concerning Multipoint Video Distribution System (MVDS) Links

Denmark

Frequency band	Danish Allocation
	ERC/DEC (96) 05 on MVDS

Frequency band	Danish Allocation
42.5000-43.5000 GHz	FIXED FIXED-SATELLITE (Earth-space) [1] MOBILE except Aeronautical Mobile RADIO ASTRONOMY S5.149 [1] S5.552
43.5000-47.0000 GHz	MOBILE [1] <hr/> MOBILE-SATELLITE <hr/> RADIONAVIGATION <hr/> RADIONAVIGATION-SATELLITE <hr/> [1] S5.553 <hr/> S5.554 <hr/> 43.5-45.5 GHz: Military
47.0000-47.2000 GHz	AMATEUR <hr/> AMATEUR-SATELLITE <hr/> Amateur: Order No 734.
47.2000-50.2000 GHz	FIXED <hr/> FIXED-SATELLITE (Earth-space) [1] <hr/> MOBILE <hr/> S5.149 <hr/> [1] S5.552 <hr/> S5.552A <hr/> S5.555 <hr/> 47.2-47.5 MHz/47.9-48.2 MHz: High altitude platforms. ENG/OB, Cordless Cameras and Temporary Point to Point video links, ERC/REC 25-10E.

Denmark

Frequency band	Danish Allocation
50.2000-50.4000 GHz	EARTH EXPLORATION-SATELLITE (passive) FIXED MOBILE SPACE RESEARCH (passive)
50.4000-51.4000 GHz	FIXED FIXED-SATELLITE (Earth-space) MOBILE Mobile-Satellite (Earth-space)
51.4000-52.6000 GHz	FIXED MOBILE S5.547 S5.556
52.6000-54.2500 GHz	EARTH EXPLORATION-SATELLITE <hr/> SPACE RESEARCH (passive) <hr/> S5.556 <hr/> All emissions are prohibited (S5.340) Passive applications Atmospheric temperature sounding
54.2500-55.7800 GHz	EARTH EXPLORATION-SATELLITE (passive) <hr/> INTER-SATELLITE [1] <hr/> SPACE RESEARCH (passive) <hr/> [1] S5.556A <hr/> Passive applications Atmospheric temperature sounding

Frequency band	Danish Allocation
55.7800-56.9000 GHz	EARTH EXPLORATION-SATELLITE (passive)
	INTER-SATELLITE [1]
	FIXED
	MOBILE [2]
	SPACE RESEARCH (passive)
	[1] S5.556A
	S5.547
	[2] S5.558
	<p>CEPT Rec T/R 22-03, Fixed and Mobile Systems.</p> <p>Passive applications</p> <p>Atmospheric temperature sounding</p>
	56.9000-57.0000 GHz
FIXED	
INTER-SATELLITE [1]	
MOBILE [2]	
SPACE RESEARCH (passive)	
[1] S5.556B	
S5.547	
[2] S5.558	
<p>CEPT Rec T/R 22-03, Fixed and Mobile Systems.</p> <p>Passive applications</p> <p>Atmospheric temperature sounding</p>	

Frequency band	Danish Allocation
57.0000-58.2000 GHz	EARTH EXPLORATION-SATELLITE (active)
	FIXED
	INTER-SATELLITE [1]
	MOBILE [2]
	SPACE RESEARCH (passive)
	S5.547
	[1] S5.556A
	[2] S5.558
	<p>CEPT Rec T/R 22-03, Fixed and Mobile Systems.</p> <p>Passive applications</p> <p>Atmospheric temperature sounding</p>
58.2000-59.0000 GHz	EARTH EXPLORATION-SATELLITE (passive)
	FIXED
	MOBILE
	SPACE RESEARCH (passive)
	S5.547
	S5.556
	<p>CEPT Rec T/R 22-03, Fixed and Mobile Systems.</p> <p>Passive applications</p> <p>Atmospheric temperature sounding</p>
59.0000-59.3000 GHz	FIXED
	INTER-SATELLITE [1]
	EARTH EXPLORATION-SATELLITE (passive)
	SPACE RESEARCH (passive)
	MOBILE [2]

Frequency band	Danish Allocation
	<p>RADIOLOCATION [3]</p> <hr/> <p>S5.138</p> <hr/> <p>[1] S5.556A</p> <hr/> <p>[2] S5.558</p> <hr/> <p>[3] S5.559</p> <hr/> <p>Passive applications</p> <p>Atmospheric temperature sounding</p>
59.3000-64.0000 GHz	<p>FIXED</p> <hr/> <p>INTER-SATELLITE</p> <hr/> <p>MOBILE [1]</p> <hr/> <p>RADIOLOCATION [2]</p> <hr/> <p>S5.138</p> <hr/> <p>[1] S5.558</p> <hr/> <p>[2] S5.559</p> <hr/> <p>61.00-61.50 and 63-64 GHz: ERC/REC 70-03E on Short Range Devices, Annex 1 and 5.</p> <p>63-64 GHz: RTT, Order No 733.</p> <p>ERC/DEC (92) 02 on RTT</p> <p>CEPT Rec T/R 22-03, Fixed and Mobile Systems.</p>
64.0000-65.0000 GHz	<p>INTER-SATELLITE</p> <hr/> <p>FIXED</p> <hr/> <p>MOBILE except Aeronautical Mobile</p> <hr/> <p>S5.547</p> <hr/> <p>CEPT Rec T/R 22-03, Fixed and Mobile Systems.</p>

Frequency band	Danish Allocation
65.0000-66.0000 GHz	EARTH EXPLORATION-SATELLITE SPACE RESEARCH INTER-SATELLITE FIXED MOBILE except Aeronautical Mobile S5.547 CEPT Rec T/R 22-03, Fixed and Mobile Systems.
66.0000-71.0000 GHz	MOBILE [1][2] MOBILE-SATELLITE RADIONAVIGATION RADIONAVIGATION-SATELLITE INTER-SATELLITE [1] S5.553 S5.554 [2] S5.558
71.0000-74.0000 GHz	FIXED FIXED-SATELLITE (Earth-space) MOBILE MOBILE-SATELLITE (Earth-space) S5.149 S5.556
74.0000-75.5000 GHz	FIXED FIXED-SATELLITE (Earth-space) MOBILE Space Research (space-Earth)

Denmark

Frequency band	Danish Allocation
75.5000-76.0000 GHz	AMATEUR AMATEUR-SATELLITE Space Research (space-Earth) <hr/> Amateur: Order No 734.
76.0000-81.0000 GHz	RADIOLOCATION <hr/> Amateur <hr/> Amateur-Satellite <hr/> Space Research (space-Earth) <hr/> S5.560 <hr/> 76-77 GHz: RTT, Order No 733. ERC/DEC (92) 02 on RTT 76.0-77.0 GHz: ERC/REC 70-03E on Short Range Devices, Annex 5 (RTT). Amateur: Order No 734.
81.0000-84.0000 GHz	FIXED FIXED-SATELLITE (space-Earth) MOBILE MOBILE-SATELLITE (space-Earth) Space Research (space-Earth)
84.0000-86.0000 GHz	FIXED MOBILE BROADCASTING BROADCASTING-SATELLITE S5.561

Denmark

Frequency band	Danish Allocation
86.0000-92.0000 GHz	EARTH EXPLORATION-SATELLITE (passive) <hr/> RADIO ASTRONOMY <hr/> SPACE RESEARCH (passive) <hr/> All emissions are prohibited (S5.340)
92.0000-94.0000 GHz	FIXED FIXED-SATELLITE (Earth-space) MOBILE RADIOLOCATION S5.149 S5.556
94.0000-94.1000 GHz	RADIOLOCATION EARTH EXPLORATION-SATELLITE (active) SPACE RESEARCH (active) S5.562
94.1000-95.0000 GHz	FIXED FIXED-SATELLITE (Earth-space) MOBILE RADIOLOCATION S5.556
95.0000-100.0000 GHz	MOBILE [1] MOBILE-SATELLITE RADIONAVIGATION RADIONAVIGATION-SATELLITE Radiolocation S5.149

Denmark

Frequency band	Danish Allocation
	<p>[1] S5.553</p> <p>S5.554</p> <p>S5.555</p>
100.0000-102.0000 GHz	<p>EARTH EXPLORATION-SATELLITE (passive)</p> <p>FIXED</p> <p>MOBILE</p> <p>SPACE RESEARCH (passive)</p>
102.0000-105.0000 GHz	<p>FIXED</p> <p>FIXED-SATELLITE (space-Earth)</p> <p>MOBILE</p>
105.0000-116.0000 GHz	<p>EARTH EXPLORATION-SATELLITE (passive)</p> <p>RADIO ASTRONOMY</p> <p>SPACE RESEARCH (passive)</p> <p>All emissions are prohibited (S5.340)</p>
116.0000-119.9800 GHz	<p>EARTH EXPLORATION-SATELLITE (passive)</p> <p>FIXED</p> <p>INTER-SATELLITE</p> <p>MOBILE [1]</p> <p>SPACE RESEARCH (passive)</p> <p>S5.138</p> <p>[1] S5.558</p>
119.9800-120.0200 GHz	<p>EARTH EXPLORATION-SATELLITE (passive)</p> <p>FIXED</p> <p>INTER-SATELLITE</p> <p>MOBILE [1]</p>

Frequency band	Danish Allocation
	<p>SPACE RESEARCH (passive)</p> <p>Amateur</p> <p>S5.138</p> <p>[1] S5.558</p>
120.0200-126.0000 GHz	<p>EARTH EXPLORATION-SATELLITE (passive)</p> <hr/> <p>FIXED</p> <hr/> <p>INTER-SATELLITE</p> <hr/> <p>MOBILE [1]</p> <hr/> <p>SPACE RESEARCH (passive)</p> <hr/> <p>S5.138</p> <hr/> <p>[1] S5.558</p> <hr/> <p>122-123 GHz: ERC/REC 70-03E on Short Range Devices, Annex 1.</p>
126.0000-134.0000 GHz	<p>FIXED</p> <p>INTER-SATELLITE</p> <p>MOBILE [1]</p> <p>RADIOLOCATION [2]</p> <p>[1] S5.558</p> <p>[2] S5.559</p>
134.0000-142.0000 GHz	<p>MOBILE [1]</p> <p>MOBILE-SATELLITE</p> <p>RADIONAVIGATION</p> <p>RADIONAVIGATION-SATELLITE</p> <p>Radiolocation</p> <p>S5.149</p> <p>[1] S5.553</p>

Denmark

Frequency band	Danish Allocation
	S5.554 S5.555 All emissions are prohibited (S5.340)
142.0000-144.0000 GHz	AMATEUR <hr/> AMATEUR-SATELLITE <hr/> Amateur: Order No 734.
144.0000-149.0000 GHz	RADIOLOCATION <hr/> Amateur <hr/> Amateur-Satellite <hr/> S5.149 <hr/> S5.555 <hr/> Amateur: Order No 734.
149.0000-150.0000 GHz	FIXED FIXED-SATELLITE (space-Earth) MOBILE
150.0000-151.0000 GHz	EARTH EXPLORATION-SATELLITE (passive) FIXED FIXED-SATELLITE (space-Earth) MOBILE SPACE RESEARCH (passive) S5.149 S5.385
151.0000-156.0000 GHz	FIXED FIXED-SATELLITE (space-Earth) MOBILE

Denmark

Frequency band	Danish Allocation
156.0000-158.0000 GHz	EARTH EXPLORATION-SATELLITE (passive) FIXED FIXED-SATELLITE (space-Earth) MOBILE
158.0000-164.0000 GHz	FIXED FIXED-SATELLITE (space-Earth) MOBILE
164.0000-168.0000 GHz	EARTH EXPLORATION-SATELLITE (passive) RADIO ASTRONOMY SPACE RESEARCH (passive)
168.0000-170.0000 GHz	FIXED MOBILE
170.0000-174.5000 GHz	FIXED INTER-SATELLITE MOBILE [1] S5.149 S5.385 [1] S5.558
174.5000-176.5000 GHz	EARTH EXPLORATION-SATELLITE (passive) FIXED INTER-SATELLITE MOBILE [1] SPACE RESEARCH (passive) S5.149

Denmark

Frequency band	Danish Allocation
	S5.385 [1] S5.558
176.5000-182.0000 GHz	FIXED INTER-SATELLITE MOBILE S5.149 S5.385 S5.558
182.0000-185.0000 GHz	EARTH EXPLORATION-SATELLITE (passive) RADIO ASTRONOMY SPACE RESEARCH (passive) All emissions are prohibited (S5.340)
185.0000-190.0000 GHz	FIXED INTER-SATELLITE MOBILE [1] S5.149 S5.385 [1] S5.558
190.0000-200.0000 GHz	MOBILE [1] MOBILE-SATELLITE RADIONAVIGATION RADIONAVIGATION-SATELLITE [1] S5.553 S5.554

Denmark

Frequency band	Danish Allocation
200.0000-202.0000 GHz	EARTH EXPLORATION-SATELLITE (passive) FIXED MOBILE SPACE RESEARCH (passive)
202.0000-217.0000 GHz	FIXED FIXED-SATELLITE (Earth-space) MOBILE
217.0000-231.0000 GHz	EARTH EXPLORATION-SATELLITE (passive) RADIO ASTRONOMY SPACE RESEARCH (passive) All emissions are prohibited (S5.340)
231.0000-235.0000 GHz	FIXED FIXED-SATELLITE (space-Earth) MOBILE Radiolocation
235.0000-238.0000 GHz	EARTH EXPLORATION-SATELLITE (passive) FIXED FIXED-SATELLITE (space-Earth) MOBILE SPACE RESEARCH (passive)
238.0000-241.0000 GHz	FIXED FIXED-SATELLITE (space-Earth) MOBILE Radiolocation

Frequency band	Danish Allocation
241.0000-248.0000 GHz	RADIOLOCATION <hr/> Amateur <hr/> Amateur-Satellite <hr/> S5.138 <hr/> Amateur: Order No 734. 244-246 GHz: ERC/REC 70-03E on Short Range Devices, Annex 1.
248.0000-250.0000 GHz	AMATEUR <hr/> AMATEUR-SATELLITE <hr/> Amateur: Order No 734.
250.0000-252.0000 GHz	EARTH EXPLORATION-SATELLITE (passive) SPACE RESEARCH (passive) S5.149 S5.555
252.0000-265.0000 GHz	MOBILE [1] MOBILE-SATELLITE RADIONAVIGATION RADIONAVIGATION-SATELLITE S5.149 S5.385 [1] S5.553 S5.554 S5.555
265.0000-275.0000 GHz	FIXED FIXED-SATELLITE (Earth-space) MOBILE

Frequency band	Danish Allocation
	RADIO ASTRONOMY S5.149
9.9950-10.0030 MHz	STANDARD FREQUENCY AND TIME SIGNAL (10000 kHz) S5.111 Low Power Devices: Order No 733. TB 94058 concerning Radio Transmitters with very Low Power
10.0030-10.0050 MHz	STANDARD FREQUENCY AND TIME SIGNAL Space Research S5.111 Low Power Devices: Order No 733. TB 94058 concerning Radio Transmitters with very Low Power
10.0050-10.1000 MHz	AERONAUTICAL MOBILE (R) S5.111 RR APP 27 aer 2 Low Power Devices: Order No 733. TB 94058 concerning Radio Transmitters with very Low Power
10.1000-10.1500 MHz	FIXED Amateur S5.120 Civil and Military Low Power Devices: Order No 733. TB 94058 concerning Radio Transmitters with very Low Power Amateur: Order No 734.

Denmark

Frequency band	Danish Allocation
10.1500-11.1750 MHz	<p>FIXED</p> <hr/> <p>Mobile except Aeronautical Mobile (R)</p> <hr/> <p>Civil and Military</p> <p>Low Power Devices: Order No 733.</p> <p>TB 94058 concerning Radio Transmitters with very Low Power</p>
11.1750-11.2750 MHz	<p>AERONAUTICAL MOBILE (OR)</p> <hr/> <p>RR APP 26</p> <p>Military</p> <p>Low Power Devices: Order No 733.</p> <p>TB 94058 concerning Radio Transmitters with very Low Power</p>
11.2750-11.4000 MHz	<p>AERONAUTICAL MOBILE (R)</p> <hr/> <p>RR APP 27 aer 2</p> <p>Low Power Devices: Order No 733.</p> <p>TB 94058 concerning Radio Transmitters with very Low Power</p>
11.4000-11.6000 MHz	<p>FIXED</p> <hr/> <p>Civil and Military</p> <p>Low Power Devices: Order No 733.</p> <p>TB 94058 concerning Radio Transmitters with very Low Power</p>
11.6000-11.6500 MHz	<p>BROADCASTING [1]</p> <hr/> <p>[1] S5.134</p> <hr/> <p>S5.146</p> <hr/> <p>Low Power Devices: Order No 733.</p> <p>TB 94058 concerning Radio Transmitters with very Low Power</p>
11.6500-12.0500 MHz	<p>BROADCASTING</p> <hr/> <p>Low Power Devices: Order No 733.</p> <p>TB 94058 concerning Radio Transmitters with very Low Power</p>

Frequency band	Danish Allocation
12.0500-12.1000 MHz	<p>BROADCASTING [1]</p> <hr/> <p>[1] S5.134</p> <hr/> <p>S5.146</p> <hr/> <p>Low Power Devices: Order No 733.</p> <p>TB 94058 concerning Radio Transmitters with very Low Power</p>
12.1000-12.2300 MHz	<p>FIXED</p> <hr/> <p>Civil and Military</p> <p>Low Power Devices: Order No 733.</p> <p>TB 94058 concerning Radio Transmitters with very Low Power</p>
12.2300-13.2000 MHz	<p>MARITIME MOBILE [1][2][3][4]</p> <hr/> <p>[1] S5.109</p> <hr/> <p>[2] S5.110</p> <hr/> <p>[3] S5.132</p> <hr/> <p>[4] S5.145</p> <hr/> <p>RR APP 31/APP 16</p> <p>12230-12353 kHz MS J3E paired 41x3 kHz RR APP 25</p> <p>12353-12368 kHz MS/FC J3E non-paired 5x3 kHz</p> <p>12368-12420 kHz MS Special Transmitting System 13x4 kHz</p> <p>12420-12421.75 kHz MS Oceanografic 5x0.3 kHz</p> <p>12421.75-12476.75 kHz MS A1A Working 110x0.5 kHz</p> <p>12476.75-12549.75 kHz MS NBDP Paired 146x0.5 kHz</p> <p>12549.75-12554.75 kHz MS A1A Calling</p> <p>12554.75-12559.75 kHz MS NBDP paired 10x0.5 kHz</p> <p>12559.75-12576.75 kHz MS NBDP non-paired 34x0.5 kHz</p> <p>12576.75-12578.75 kHz MS DSC Calling 4x0.5 kHz</p> <p>12578.75-12656.75 kHz FC NBDP Paired 156x0.5 kHz</p>

Denmark

Frequency band	Danish Allocation
	<p>12656.75-126585 kHz FC DSC Calling 3x0.5 kHz</p> <p>12658.5-13077 kHz FC Special Transmitting System</p> <p>13077-13200 kHz FC J3E paired 41x3 kHz RR APP 25</p> <p>TB 93013 concerning Maritime MF/HF Radiotelex Equipment.</p> <p>TB 93014 concerning Digital Selective Calling, DSC.</p> <p>TB 93039 concerning Maritime MF/HF Radio Equipment.</p> <p>Low Power Devices: Order No 733.</p> <p>TB 94058 concerning Radio Transmitters with very Low Power</p>
13.2000-13.2600 MHz	<p>AERONAUTICAL MOBILE (OR)</p> <hr/> <p>RR APP 26</p> <p>Low Power Devices: Order No 733.</p> <p>TB 94058 concerning Radio Transmitters with very Low Power</p>
13.2600-13.3600 MHz	<p>AERONAUTICAL MOBILE (R)</p> <hr/> <p>RR APP 27 aer 2</p> <p>Low Power Devices: Order No 733.</p> <p>TB 94058 concerning Radio Transmitters with very Low Power</p>
13.3600-13.4100 MHz	<p>FIXED</p> <hr/> <p>RADIO ASTRONOMY</p> <hr/> <p>S5.149</p> <hr/> <p>Civil and Military</p> <p>Low Power Devices: Order No 733.</p> <p>TB 94058 concerning Radio Transmitters with very Low Power</p>

Frequency band	Danish Allocation
13.4100-13.5700 MHz	<p>FIXED</p> <hr/> <p>Mobile except Aeronautical Mobile (R)</p> <hr/> <p>S5.150</p> <hr/> <p>Civil and Military</p> <p>Low Power Devices, Order No 733.</p> <p>13.553-13.567 MHz: TB 94056 rev. A concerning Low Power Devices with Loop Antennas.</p> <p>TB 94058 concerning Radio Transmitters with very Low Power</p> <p>13.553-13.567 MHz: TB 94060 rev. A concerning Low Power Devices with integral Antenna.</p> <p>13.553-13.567 MHz: ERC/REC 70-03E on Short Range Devices, Annex 1 and 9.</p> <p>ERC/DEC (98) 05 on Approval regulations for Short Range Devices (25 MHz to 1000 MHz).</p>
13.5700-13.6000 MHz	<p>BROADCASTING [1]</p> <hr/> <p>[1] S5.134</p> <hr/> <p>S5.155B</p> <hr/> <p>Low Power Devices: Order No 733.</p> <p>TB 94058 concerning Radio Transmitters with very Low Power</p>
13.6000-13.8000 MHz	<p>BROADCASTING</p> <hr/> <p>Low Power Devices: Order No 733.</p> <p>TB 94058 concerning Radio Transmitters with very Low Power</p>
13.8000-13.8700 MHz	<p>BROADCASTING [1]</p> <hr/> <p>[1] S5.134</p> <hr/> <p>S5.155B</p> <hr/> <p>Low Power Devices: Order No 733.</p> <p>TB 94058 concerning Radio Transmitters with very Low Power</p>

Denmark

Frequency band	Danish Allocation
13.8700-14.0000 MHz	<p>FIXED</p> <hr/> <p>Mobile except Aeronautical Mobile (R)</p> <hr/> <p>Civil and Military</p> <p>Low Power Devices: Order No 733.</p> <p>TB 94058 concerning Radio Transmitters with very Low Power</p>
14.0000-14.2500 MHz	<p>AMATEUR [1]</p> <hr/> <p>AMATEUR-SATELLITE</p> <hr/> <p>[1] S5.120</p> <hr/> <p>Low Power Devices: Order No 733.</p> <p>TB 94058 concerning Radio Transmitters with very Low Power</p> <p>Amateur: Order No 734.</p>
14.2500-14.3500 MHz	<p>AMATEUR</p> <hr/> <p>S5.120</p> <hr/> <p>Low Power Devices: Order No 733.</p> <p>TB 94058 concerning Radio Transmitters with very Low Power</p> <p>Amateur: Order No 734.</p>
14.3500-14.9900 MHz	<p>FIXED</p> <hr/> <p>Mobile except Aeronautical Mobile (R)</p> <hr/> <p>Civil and Military</p> <p>Low Power Devices: Order No 733.</p> <p>TB 94058 concerning Radio Transmitters with very Low Power</p>
14.9900-15.0050 MHz	<p>STANDARD FREQUENCY AND TIME SIGNAL (15000 kHz)</p> <hr/> <p>S5.120</p> <hr/> <p>Low Power Devices: Order No 733.</p> <p>TB 94058 concerning Radio Transmitters with very Low Power</p>

Frequency band	Danish Allocation
15.0050-15.0100 MHz	<p data-bbox="544 297 1225 331">STANDARD FREQUENCY AND TIME SIGNAL</p> <hr/> <p data-bbox="544 371 783 405">Space Research</p> <hr/> <p data-bbox="544 445 963 479">Low Power Devices: Order No 733.</p> <p data-bbox="544 506 1283 539">TB 94058 concerning Radio Transmitters with very Low Power</p>
15.0100-15.1000 MHz	<p data-bbox="544 571 1011 604">AERONAUTICAL MOBILE (OR)</p> <hr/> <p data-bbox="544 645 683 678">RR APP 26</p> <p data-bbox="544 705 632 739">Military</p> <p data-bbox="544 766 963 799">Low Power Devices: Order No 733.</p> <p data-bbox="544 826 1283 860">TB 94058 concerning Radio Transmitters with very Low Power</p>
15.1000-15.6000 MHz	<p data-bbox="544 896 804 929">BROADCASTING</p> <hr/> <p data-bbox="544 969 963 1003">Low Power Devices: Order No 733.</p> <p data-bbox="544 1030 1283 1064">TB 94058 concerning Radio Transmitters with very Low Power</p>
15.6000-15.8000 MHz	<p data-bbox="544 1097 852 1131">BROADCASTING [1]</p> <hr/> <p data-bbox="544 1171 699 1205">[1] S5.134</p> <hr/> <p data-bbox="544 1245 651 1279">S5.146</p> <hr/> <p data-bbox="544 1319 963 1352">Low Power Devices: Order No 733.</p> <p data-bbox="544 1379 1283 1413">TB 94058 concerning Radio Transmitters with very Low Power</p>
15.8000-16.3600 MHz	<p data-bbox="544 1444 639 1478">FIXED</p> <hr/> <p data-bbox="544 1518 740 1552">Civil and Military</p> <p data-bbox="544 1579 963 1612">Low Power Devices: Order No 733.</p> <p data-bbox="544 1639 1283 1673">TB 94058 concerning Radio Transmitters with very Low Power</p>

Denmark

Frequency band	Danish Allocation

Frequency band	Danish Allocation
16.3600-17.4100 MHz	MARITIME MOBILE [1][2][3][4]
	[1] S5.109
	[2] S5.110
	[3] S5.132
	[4] S5.146 RR APP 31/APP 16 16360-16528 kHz MS J3E paired 56x3 kHz RR APP 25 16528-16549 kHz MS/FC J3E non-paired 5x3 kHz 16549-16617 kHz MS Special Transmitting System 17x4 kHz 16617-16618.75 kHz MS Oceanographic 5x0.3 kHz 16618.75-16683.25 kHz MS A1A Working 129x0.5 kHz 16683.25-16733.75 kHz MS NBDP Paired 101x0.5 kHz 16733.75-16738.75 kHz MS A1A Calling 16738.75-16784.75 kHz MS NBDP Paired 92x0.5 kHz 16748.75-16804.25 kHz MS NBDP non-paired 39x0.5 kHz 16804.25-16806.25 kHz MS DSC 4x0.5 kHz 16806.25-16902.75 kHz FC NBDP Paired 193x0.5 kHz 16902.75-16904.5 kHz FC DSC Calling 3x0.5 kHz 16904.5-17410 kHz FC Special Transmitting System 17242-17410 kHz FC J3E paired 56x3 kHz RR APP 25 TB 93013 concerning Maritime MF/HF Radiotelex Equipment. TB 93014 concerning Digital Selective Calling, DSC. TB 93039 concerning Maritime MF/HF Radio Equipment. Low Power Devices: Order No 733. TB 94058 concerning Radio Transmitters with very Low Power

Denmark

Frequency band	Danish Allocation
17.4100-17.4800 MHz	<p>FIXED</p> <hr/> <p>Civil and Military</p> <p>Low Power Devices: Order No 733.</p> <p>TB 94058 concerning Radio Transmitters with very Low Power</p>
17.4800-17.5500 MHz	<p>BROADCASTING [1]</p> <hr/> <p>[1] S5.134</p> <hr/> <p>S5.146</p> <hr/> <p>Low Power Devices: Order No 733.</p> <p>TB 94058 concerning Radio Transmitters with very Low Power</p>
17.5500-17.9000 MHz	<p>BROADCASTING</p> <hr/> <p>Low Power Devices: Order No 733.</p> <p>TB 94058 concerning Radio Transmitters with very Low Power</p>
17.9000-17.9700 MHz	<p>AERONAUTICAL MOBILE (R)</p> <hr/> <p>RR APP 27 aer 2</p> <p>Low Power Devices: Order No 733.</p> <p>TB 94058 concerning Radio Transmitters with very Low Power</p>
17.9700-18.0300 MHz	<p>AERONAUTICAL MOBILE (OR)</p> <hr/> <p>RR APP 26</p> <p>Military</p> <p>Low Power Devices: Order No 733.</p> <p>TB 94058 concerning Radio Transmitters with very Low Power</p>

Denmark

Frequency band	Danish Allocation
18.0300-18.0520 MHz	<p>FIXED</p> <hr/> <p>Civil and Military</p> <p>Low Power Devices: Order No 733.</p> <p>TB 94058 concerning Radio Transmitters with very Low Power</p>
18.0520-18.0680 MHz	<p>FIXED</p> <p>Space Research</p> <hr/> <p>Civil and Military</p> <p>Low Power Devices: Order No 733.</p> <p>TB 94058 concerning Radio Transmitters with very Low Power</p>
18.0680-18.1680 MHz	<p>AMATEUR</p> <hr/> <p>AMATEUR-SATELLITE</p> <hr/> <p>S5.120</p> <hr/> <p>Low Power Devices: Order No 733.</p> <p>TB 94058 concerning Radio Transmitters with very Low Power</p> <p>Amateur: Order No 734.</p>
18.1680-18.7800 MHz	<p>FIXED</p> <hr/> <p>Mobile except Aeronautical Mobile</p> <hr/> <p>Civil and Military</p> <p>Low Power Devices: Order No 733.</p> <p>TB 94058 concerning Radio Transmitters with very Low Power</p>
18.7800-18.9000 MHz	<p>MARITIME MOBILE</p> <hr/> <p>TB 93013 concerning Maritime MF/HF Radiotelex Equipment.</p> <p>Low Power Devices: Order No 733.</p> <p>TB 94058 concerning Radio Transmitters with very Low Power</p>
18.9000-19.0200 MHz	<p>BROADCASTING [1]</p> <hr/> <p>[1] S5.134</p>

Denmark

Frequency band	Danish Allocation
	<p>S5.146</p> <hr/> <p>Low Power Devices: Order No 733.</p> <p>TB 94058 concerning Radio Transmitters with very Low Power</p>
<p>19.0200-19.6800 MHz</p>	<p>FIXED</p> <hr/> <p>Civil and Military</p> <p>Low Power Devices: Order No 733.</p> <p>TB 94058 concerning Radio Transmitters with very Low Power</p>
<p>19.6800-19.8000 MHz</p>	<p>MARITIME MOBILE [1]</p> <hr/> <p>[1] S5.132</p> <hr/> <p>TB 93013 concerning Maritime MF/HF Radiotelex Equipment.</p> <p>Low Power Devices: Order No 733.</p> <p>TB 94058 concerning Radio Transmitters with very Low Power</p>
<p>19.8000-19.9900 MHz</p>	<p>FIXED</p> <hr/> <p>Civil and Military</p> <p>Low Power Devices: Order No 733.</p> <p>TB 94058 concerning Radio Transmitters with very Low Power</p>
<p>19.9900-19.9950 MHz</p>	<p>STANDARD FREQUENCY AND TIME SIGNAL</p> <hr/> <p>Space Research</p> <hr/> <p>S5.111</p> <hr/> <p>Low Power Devices: Order No 733.</p> <p>TB 94058 concerning Radio Transmitters with very Low Power</p>
<p>19.9950-20.0100 MHz</p>	<p>STANDARD FREQUENCY AND TIME SIGNAL (20000 kHz)</p> <hr/> <p>S5.111</p> <hr/> <p>Low Power Devices: Order No 733.</p> <p>TB 94058 concerning Radio Transmitters with very Low Power</p>

Denmark

Frequency band	Danish Allocation
20.0100-21.0000 MHz	<p>FIXED</p> <hr/> <p>Mobile</p> <hr/> <p>Civil and Military</p> <p>Low Power Devices: Order No 733.</p> <p>TB 94058 concerning Radio Transmitters with very Low Power</p>
21.0000-21.4500 MHz	<p>AMATEUR</p> <hr/> <p>AMATEUR-SATELLITE</p> <hr/> <p>S5.120</p> <hr/> <p>Low Power Devices: Order No 733.</p> <p>TB 94058 concerning Radio Transmitters with very Low Power</p> <p>Amateur: Order No 734.</p>
21.4500-21.8500 MHz	<p>BROADCASTING</p> <hr/> <p>Low Power Devices: Order No 733.</p> <p>TB 94058 concerning Radio Transmitters with very Low Power</p>
21.8500-21.8700 MHz	<p>FIXED</p> <hr/> <p>Civil and Military</p> <p>Low Power Devices: Order No 733.</p> <p>TB 94058 concerning Radio Transmitters with very Low Power</p>
21.8700-21.9240 MHz	<p>FIXED [1]</p> <hr/> <p>[1] S5.155B</p> <hr/> <p>Low Power Devices: Order No 733.</p> <p>TB 94058 concerning Radio Transmitters with very Low Power</p>
21.9240-22.0000 MHz	<p>AERONAUTICAL MOBILE (R)</p> <hr/> <p>RR APP 27 aer 2</p> <p>Low Power Devices: Order No 733.</p> <p>TB 94058 concerning Radio Transmitters with very Low Power</p>

Frequency band	Danish Allocation
22.0000-22.8550 MHz	<p data-bbox="544 293 887 331">MARITIME MOBILE [1]</p> <hr/> <p data-bbox="544 369 699 407">[1] S5.132</p> <hr/> <p data-bbox="544 443 780 472">RR APP 31/APP 16</p> <p data-bbox="544 504 1201 533">22000-22159 kHz MS J3E paired 53x3 kHz RR APP 25</p> <p data-bbox="544 564 1139 593">22159-22180 kHz MS/FC J3E non-paired 7x3 kHz</p> <p data-bbox="544 624 1270 654">22180-22240 kHz MS Special Transmitting System 15x4 kHz</p> <p data-bbox="544 685 1142 714">22240-22241.5 kHz MS Oceanographic 5x0.3 kHz</p> <p data-bbox="544 745 1169 775">22241.5-22279.25 kHz MS A1A Working 75x0.5 kHz</p> <p data-bbox="544 806 1023 835">22279.25-22284.25 kHz MS A1A Calling</p> <p data-bbox="544 866 1198 896">22284.25-22351.75 kHz MS NBDP paired 135x0.5 kHz</p> <p data-bbox="544 927 1236 956">22351.25-22374.25 kHz MS NBDP non-paired 45x0.5 kHz</p> <p data-bbox="544 987 1067 1016">22374.25-22375.75 kHz MS DSC 3x0.5 kHz</p> <p data-bbox="544 1048 1193 1077">22375.75-22443.75 kHz FC NBDP paired 136x0.5 kHz</p> <p data-bbox="544 1108 1050 1137">22443.75-22445.5 kHz FC DSC 3x0.5 kHz</p> <p data-bbox="544 1169 1166 1198">22445.5-22696 kHz FC Special Transmitting System</p> <p data-bbox="544 1229 1197 1258">22696-22855 kHz FC J3E paired 56x3 kHz RR APP 25</p> <p data-bbox="544 1290 1273 1319">TB 93013 concerning Maritime MF/HF Radiotelex Equipment.</p> <p data-bbox="544 1350 1161 1379">TB 93014 concerning Digital Selective Calling, DSC.</p> <p data-bbox="544 1411 1217 1440">TB 93039 concerning Maritime MF/HF Radio Equipment.</p> <p data-bbox="544 1471 963 1500">Low Power Devices: Order No 733.</p> <p data-bbox="544 1532 1286 1561">TB 94058 concerning Radio Transmitters with very Low Power</p>
22.8550-23.0000 MHz	<p data-bbox="544 1626 639 1664">FIXED</p> <hr/> <p data-bbox="544 1700 740 1729">Civil and Military</p> <p data-bbox="544 1760 963 1789">Low Power Devices: Order No 733.</p> <p data-bbox="544 1821 1286 1850">TB 94058 concerning Radio Transmitters with very Low Power</p>

Denmark

Frequency band	Danish Allocation
23.0000-23.2000 MHz	<p>FIXED</p> <hr/> <p>Mobile except Aeronautical Mobile (R)</p> <hr/> <p>Civil and Military</p> <p>Low Power Devices: Order No 733.</p> <p>TB 94058 concerning Radio Transmitters with very Low Power</p>
23.2000-23.3500 MHz	<p>FIXED [1]</p> <hr/> <p>AERONAUTICAL MOBILE (OR)</p> <hr/> <p>[1] S5.156A</p> <hr/> <p>RR APP 26</p> <p>Low Power Devices: Order No 733.</p> <p>TB 94058 concerning Radio Transmitters with very Low Power</p>
23.3500-24.0000 MHz	<p>FIXED</p> <hr/> <p>MOBILE except Aeronautical Mobile [1]</p> <hr/> <p>[1] S5.157</p> <hr/> <p>Civil and Military</p> <p>Low Power Devices: Order No 733.</p> <p>TB 94058 concerning Radio Transmitters with very Low Power</p>
24.0000-24.8900 MHz	<p>FIXED</p> <hr/> <p>Civil and Military</p> <p>Low Power Devices: Order No 733.</p> <p>TB 94058 concerning Radio Transmitters with very Low Power</p>

Denmark

Frequency band	Danish Allocation
24.8900-24.9900 MHz	<p>AMATEUR</p> <hr/> <p>AMATEUR-SATELLITE</p> <hr/> <p>S5.120</p> <hr/> <p>Low Power Devices: Order No 733.</p> <p>TB 94058 concerning Radio Transmitters with very Low Power</p> <p>Amateur: Order No 734.</p>
24.9900-25.0050 MHz	<p>STANDARD FREQUENCY AND TIME SIGNAL (25000 kHz)</p> <hr/> <p>Low Power Devices: Order No 733.</p> <p>TB 94058 concerning Radio Transmitters with very Low Power</p>
25.0050-25.0100 MHz	<p>STANDARD FREQUENCY AND TIME SIGNAL</p> <hr/> <p>Space Research</p> <hr/> <p>Low Power Devices: Order No 733.</p> <p>TB 94058 concerning Radio Transmitters with very Low Power</p>
25.0100-25.0700 MHz	<p>FIXED</p> <hr/> <p>MOBILE except Aeronautical Mobile</p> <hr/> <p>Civil and Military</p> <p>Low Power Devices: Order No 733.</p> <p>TB 94058 concerning Radio Transmitters with very Low Power</p>
25.0700-25.2100 MHz	<p>MARITIME MOBILE</p> <hr/> <p>RR APP 31/APP 16</p> <p>25070-25100 kHz MS J3E paired 10x3 kHz RR APP 25</p> <p>25100-25121 kHz FC/MS J3E non-paired 7x3 kHz</p> <p>25121-25161.25 kHz MS Special Transmitting Systems 10x4 kHz</p> <p>25161.25-25171.25 kHz MS A1A Working 20x0.5 kHz</p> <p>25171.25-25172.75 kHz MS A1A Calling</p> <p>25172.75-25192.75 kHz MS NBDP paired 40x0.5 kHz</p>

Denmark

Frequency band	Danish Allocation
	<p>25192.75-25208.25 kHz MS NBDP non-paired 31x0.5 kHz</p> <p>25208.25-25210 kHz MS DSC 3x0.5 kHz</p> <p>TB 93013 concerning Maritime MF/HF Radiotelex Equipment.</p> <p>TB 93014 concerning Digital Selective Calling, DSC.</p> <p>TB 93039 concerning Maritime MF/HF Radio Equipment.</p> <p>Low Power Devices: Order No 733.</p> <p>TB 94058 concerning Radio Transmitters with very Low Power</p>
25.2100-25.5500 MHz	<p>FIXED</p> <hr/> <p>MOBILE except Aeronautical Mobile</p> <hr/> <p>Civil and Military</p> <p>Low Power Devices: Order No 733.</p> <p>TB 94058 concerning Radio Transmitters with very Low Power</p>
25.5500-25.6700 MHz	<p>RADIO ASTRONOMY</p> <hr/> <p>S5.149</p> <hr/> <p>Low Power Devices: Order No 733.</p> <p>TB 94058 concerning Radio Transmitters with very Low Power</p>
25.6700-26.1000 MHz	<p>BROADCASTING</p> <hr/> <p>Low Power Devices: Order No 733.</p> <p>TB 94058 concerning Radio Transmitters with very Low Power</p>
26.1000-26.1750 MHz	<p>MARITIME MOBILE [1]</p> <hr/> <p>[1] S5.132</p> <hr/> <p>RR APP 31/APP 16</p> <p>26100.25-26120.75 kHz FC NBDP paired 41x0.5 kHz</p> <p>26120.75-26122.5 kHz FC DSC 3x0.5 kHz</p> <p>26122.5-26145 kHz FC Special Transmitting System</p>

Denmark

Frequency band	Danish Allocation
	<p>26145-26175 kHz FC J3E paired 10x3 kHz RR APP 25</p> <p>TB 93013 concerning Maritime MF/HF Radiotelex Equipment.</p> <p>TB 93014 concerning Digital Selective Calling, DSC.</p> <p>TB 93039 concerning Maritime MF/HF Radio Equipment.</p> <p>Low Power Devices: Order No 733.</p> <p>TB 94058 concerning Radio Transmitters with very Low Power</p>
26.1750-27.5000 MHz	<p>FIXED</p> <hr/> <p>MOBILE except Aeronautical Mobile</p> <hr/> <p>S5.150</p> <hr/> <p>Civil and Military</p> <p>26.965-27.405 MHz: Citizen Band (pr 27 radio, 40 channels). Order No 733.</p> <p>TB 93012 concerning Citizen Band.</p> <p>ERC/DEC (96) 02 on pr27.</p> <p>ERC/DEC (95) 01 on free circulation of equipment.</p> <p>26.995-27.255 MHz: Remote Control (Models) and Alarm purposes, Order No 733.</p> <p>TB 97085 concerning Remote Control (Models) and Alarm purposes.</p> <p>Low Power Devices, Order No 733.</p> <p>26.957-27.283 MHz: TB 94056 rev. A concerning Low Power Devices with Loop Antennas.</p> <p>TB 94058 concerning Radio Transmitters with very Low Power</p> <p>26.957-27.283 MHz: TB 94060 rev. A concerning Low Power Devices with integral Antenna.</p> <p>26.957-27.283 MHz: ERC/REC 70-03E on Short Range Devices, Annex 1, 8 and 9.</p> <p>ERC/DEC (98) 05 on Approval regulations for Short Range Devices (25 MHz to 1000 MHz).</p>

Denmark

Frequency band	Danish Allocation
<p>27.5000-28.0000 MHz</p>	<p>METEOROLOGICAL AIDS</p> <hr/> <p>FIXED</p> <hr/> <p>MOBILE</p> <hr/> <p>Civil and Military</p> <p>Low Power Devices: Order No 733.</p> <p>TB 94058 concerning Radio Transmitters with very Low Power</p>
<p>28.0000-29.7000 MHz</p>	<p>AMATEUR</p> <hr/> <p>AMATEUR-SATELLITE</p> <hr/> <p>Military, Land mobile</p> <p>Low Power Devices: Order No 733.</p> <p>TB 94058 concerning Radio Transmitters with very Low Power</p> <p>Amateur: Order No 734.</p>
<p>29.7000-30.0050 MHz</p>	<p>MOBILE</p> <hr/> <p>Military, Land mobile</p> <p>29.70-30.00 MHz ML.</p> <p>TB 95063 concerning Land Mobile 30 MHz Radio Telephones.</p> <p>29.7-30.0 MHz: Low Power Devices, Order No 733.</p> <p>29.7-30.0 MHz: TB 94058 concerning Radio Transmitters with very Low Power.</p> <p>29.800 MHz: TB 94061 concerning On-site Paging.</p> <p>ERC/DEC (96) 19 on On-site Paging.</p> <p>30.000-30.005 MHz: ERC/DEC (95) 02 on Approval of LM equipment using angle modulation.</p> <p>30.000-30.005 MHz: ERC/DEC (96) 07 on Approval of LM equipment for data transmission.</p> <p>30.000-30.005 MHz: ERC/DEC (96) 11 on Approval of LM equipment with integral antenna and intended for analogue speech.</p> <p>30.000-30.005 MHz: ERC/DEC (96) 14 on Approval of LM equipment with</p>

Denmark

Frequency band	Danish Allocation
	integral antenna and intended for data transmission.

Frequency band	Danish Allocation
30.0050-30.0100 MHz	<p data-bbox="544 293 1217 331">SPACE OPERATION (satellite identification)</p> <hr/> <p data-bbox="544 367 671 400">MOBILE</p> <hr/> <p data-bbox="544 441 847 474">SPACE RESEARCH</p> <hr/> <p data-bbox="544 512 791 546">Military, Land mobile</p> <p data-bbox="544 575 1283 609">TB 95063 concerning Land Mobile 30 MHz Radio Telephones.</p> <p data-bbox="544 638 1366 698">ERC/DEC (95) 02 on Approval of Land Mobile equipment using angle modulation.</p> <p data-bbox="544 728 1321 788">ERC/DEC (96) 07 on Approval of Land Mobile equipment for data transmission.</p> <p data-bbox="544 817 1374 878">ERC/DEC (96) 11 on Approval of Land Mobile equipment with integral antenna and intended for analogue speech.</p> <p data-bbox="544 907 1374 967">ERC/DEC (96) 14 on Approval of Land Mobile equipment with integral antenna and intended for data transmission.</p>
30.0100-37.5000 MHz	<p data-bbox="544 1014 671 1048">MOBILE</p> <hr/> <p data-bbox="544 1086 791 1120">Military, Land mobile</p> <p data-bbox="544 1149 826 1182">30.010-30.250 MHz ML</p> <p data-bbox="544 1211 1299 1245">30.12-31.30 MHz: TB 94048 rev. A concerning Remote Control.</p> <p data-bbox="544 1274 866 1308">30.280-31.700 MHz FB ML</p> <p data-bbox="544 1337 1283 1370">TB 95063 concerning Land Mobile 30 MHz Radio Telephones.</p> <p data-bbox="544 1400 1238 1433">30.100-31.420 MHz: TB 94061 concerning On-site Paging.</p> <p data-bbox="544 1462 986 1496">ERC/DEC (96) 19 on On-site Paging.</p> <p data-bbox="544 1525 1321 1559">32.275, 23.300 and 32.325 MHz: Personal Alarms, Order No 733.</p> <p data-bbox="544 1588 1086 1621">TB 94046 rev. B concerning Personal Alarms.</p> <p data-bbox="544 1650 1243 1684">32.000-37.500 MHz: Wireless Microphones. Order No 733.</p> <p data-bbox="544 1713 1155 1747">TB 94045 rev. A concerning Wireless Microphones.</p> <p data-bbox="544 1776 1074 1809">ERC/DEC (96) 15 on Wireless Microphones.</p> <p data-bbox="544 1839 1358 1872">32.050-32.325 MHz: TB 94047 rev. B concerning Medical Telemetry.</p> <p data-bbox="544 1901 1329 1935">35.010-35.200 MHz: Remote Control (Modelplane). Order No 733.</p> <p data-bbox="544 1964 1433 1998">34.995-35.225 MHz: ERC/REC 70-03E on Short Range Devices, Annex 8.</p>

Denmark

Frequency band	Danish Allocation
	<p>ERC/DEC (95) 02 on Approval of Land Mobile equipment using angle modulation.</p> <p>ERC/DEC (96) 07 on Approval of Land Mobile equipment for data transmission.</p> <p>ERC/DEC (96) 11 on Approval of Land Mobile equipment with integral antenna and intended for analogue speech.</p> <p>ERC/DEC (96) 14 on Approval of Land Mobile equipment with integral antenna and intended for data transmission.</p>
<p>37.5000-38.2500 MHz</p>	<p>MOBILE</p> <hr/> <p>Radio Astronomy</p> <hr/> <p>S5.149</p> <hr/> <p>Military, Land mobile</p> <p>37.700 and 37.900 MHz: Wireless Microphones. Order No 733.</p> <p>TB 94045 rev. A concerning Wireless Microphones.</p> <p>ERC/DEC (95) 02 on Approval of Land Mobile equipment using angle modulation.</p> <p>ERC/DEC (96) 07 on Approval of Land Mobile equipment for data transmission.</p> <p>ERC/DEC (96) 11 on Approval of Land Mobile equipment with integral antenna and intended for analogue speech.</p> <p>ERC/DEC (96) 14 on Approval of Land Mobile equipment with integral antenna and intended for data transmission.</p>
<p>38.2500-39.9860 MHz</p>	<p>MOBILE</p> <hr/> <p>Military, Land mobile</p> <p>39.0-39.2 MHz: Meteor Scatter.</p> <p>38.800, 39.000 and 39.400 MHz: Wireless Microphones. Order No 733.</p> <p>TB 94045 rev. A concerning Wireless Microphones.</p> <p>ERC/DEC (95) 02 on Approval of Land Mobile equipment using angle modulation.</p> <p>ERC/DEC (96) 07 on Approval of Land Mobile equipment for data transmission.</p>

Denmark

Frequency band	Danish Allocation
	<p>ERC/DEC (96) 11 on Approval of Land Mobile equipment with integral antenna and intended for analogue speech.</p> <p>ERC/DEC (96) 14 on Approval of Land Mobile equipment with integral antenna and intended for data transmission.</p>
<p>39.9860-40.0200 MHz</p>	<p>MOBILE</p> <hr/> <p>Space Research</p> <hr/> <p>Military, Land mobile</p> <p>ERC/DEC (95) 02 on Approval of Land Mobile equipment using angle modulation.</p> <p>ERC/DEC (96) 07 on Approval of Land Mobile equipment for data transmission.</p> <p>ERC/DEC (96) 11 on Approval of Land Mobile equipment with integral antenna and intended for analogue speech.</p> <p>ERC/DEC (96) 14 on Approval of Land Mobile equipment with integral antenna and intended for data transmission.</p>
<p>40.0200-40.9800 MHz</p>	<p>MOBILE</p> <hr/> <p>S5.150</p> <hr/> <p>Military, Land mobile</p> <p>40.665-40.695 MHz: Remote Control (Models) and Alarm purposes. Order No 733.</p> <p>TB 97085 concerning Remote Control (Models) and Alarm purposes.</p> <p>40.680 MHz: TB 94061 concerning On-site Paging.</p> <p>ERC/DEC (96) 19 on On-site Paging.</p> <p>40.660-40.700 MHz: Low Power Devices. Order No 733.</p> <p>TB 94060 rev A concerning Low Power Devices with Integral Antenna.</p> <p>40.660-40.700 MHz: ERC/REC 70-03E on Short Range Devices, Annex 1 and 8.</p> <p>ERC/DEC (98) 05 on Approval regulations for Short Range Devices (25 MHz to 1000 MHz).</p> <p>ERC/DEC (95) 02 on Approval of Land Mobile equipment using angle modulation.</p> <p>ERC/DEC (96) 07 on Approval of Land Mobile equipment for data transmission.</p>

Denmark

Frequency band	Danish Allocation
	<p>ERC/DEC (96) 11 on Approval of Land Mobile equipment with integral antenna and intended for analogue speech.</p> <p>ERC/DEC (96) 14 on Approval of Land Mobile equipment with integral antenna and intended for data transmission.</p>
40.9800-41.0150 MHz	<p>MOBILE</p> <hr/> <p>Space Research</p> <p>41.0-41.015 MHz: Military</p>
41.0150-44.0000 MHz	<p>MOBILE</p> <hr/> <p>Military</p>
44.0000-47.0000 MHz	<p>MOBILE</p> <hr/> <p>RADIOLOCATION [1]</p> <hr/> <p>[1] S5.162A</p> <hr/> <p>Military</p>
47.0000-68.0000 MHz	<p>BROADCASTING</p> <hr/> <p>LAND MOBILE</p> <hr/> <p>Radiolocation [1]</p> <hr/> <p>[1] S5.162A</p> <hr/> <p>S5.164</p> <hr/> <p>50-52 MHz: Amateur, Order No 734.</p> <p>47.0-50.0 MHz and 52.0-68.0 MHz: Military</p> <p>49.5-50 MHz: Low Power Devices, Order No 733.</p> <p>49.5-50 MHz: TB 94060 rev. A Low Power Devices with integral antenna.</p> <p>Broadcasting: Stockholm Agreement 1961 (CH 2-4)</p>

Frequency band	Danish Allocation
68.0000-74.8000 MHz	<p data-bbox="544 293 1098 331">MOBILE except Aeronautical Mobile</p> <hr/> <p data-bbox="544 369 651 407">S5.149</p> <hr/> <p data-bbox="544 443 791 481">Military, Land mobile</p> <p data-bbox="544 504 1158 542">FB ML including possibilities for services in simplex.</p> <p data-bbox="544 564 1390 602">TB 93018 rev. A concerning Land Mobile Data Transmitting Equipment.</p> <p data-bbox="544 624 1385 663">TB 92026 rev. B concerning Land Mobile VHF/UHF Radio Telephones.</p> <p data-bbox="544 685 1214 723">TB 95067 concerning hand held Land Mobile equipment.</p> <p data-bbox="544 745 1310 813">TB 96083 concerning hand held Land Mobile equipment for data transmission.</p> <p data-bbox="544 835 1366 902">ERC/DEC (95) 02 on Approval of Land Mobile equipment using angle modulation.</p> <p data-bbox="544 925 1321 992">ERC/DEC (96) 07 on Approval of Land Mobile equipment for data transmission.</p> <p data-bbox="544 1014 1374 1081">ERC/DEC (96) 11 on Approval of Land Mobile equipment with integral antenna and intended for analogue speech.</p> <p data-bbox="544 1104 1374 1171">ERC/DEC (96) 14 on Approval of Land Mobile equipment with integral antenna and intended for data transmission.</p>
74.8000-75.2000 MHz	<p data-bbox="544 1216 1110 1254">AERONAUTICAL RADIONAVIGATION</p> <hr/> <p data-bbox="544 1290 651 1328">S5.180</p> <hr/> <p data-bbox="544 1364 651 1402">S5.181</p> <hr/> <p data-bbox="544 1438 746 1476">Marker Beacon's</p>

Frequency band	Danish Allocation
75.2000-87.5000 MHz	<p>MOBILE except Aeronautical Mobile</p> <hr/> <p>75.2-78 MHz/80-87.5 MHz: FB ML including possibilities for services in simplex.</p> <p>78-80 MHz: Military, exclusive</p> <p>TB 93018 rev. A concerning Land Mobile Data Transmitting Equipment.</p> <p>TB 92026 rev. B concerning Land Mobile VHF/UHF Radio Telephones.</p> <p>TB 95067 concerning hand held Land Mobile equipment.</p> <p>TB 96083 concerning hand held Land Mobile equipment for data transmission.</p> <p>ERC/DEC (95) 02 on Approval of Land Mobile equipment using angle modulation.</p> <p>ERC/DEC (96) 07 on Approval of Land Mobile equipment for data transmission.</p> <p>ERC/DEC (96) 11 on Approval of Land Mobile equipment with integral antenna and intended for analogue speech.</p> <p>ERC/DEC (96) 14 on Approval of Land Mobile equipment with integral antenna and intended for data transmission.</p>
87.5000-100.0000 MHz	<p>BROADCASTING</p> <hr/> <p>VHF Sound Broadcasting, Geneva Agreement 1984.</p> <p>ERC/DEC (96) 13 on Sound Broadcasting transmitters.</p> <p>TB 96077 concerning equipment for FM radio.</p>
100.0000-108.0000 MHz	<p>BROADCASTING</p> <hr/> <p>VHF Sound Broadcasting, Geneva Agreement 1984.</p> <p>ERC/DEC (96) 13 on Sound Broadcasting transmitters.</p> <p>TB 96077 concerning equipment for FM radio.</p>
108.0000-111.9750 MHz	<p>AERONAUTICAL RADIONAVIGATION</p> <hr/> <p>Mobile</p> <hr/> <p>S5.197</p> <hr/> <p>ILS localiser</p> <p>VOR</p>

Frequency band	Danish Allocation
111.9750-117.9750 MHz	AERONAUTICAL RADIONAVIGATION <hr/> VOR
117.9750-136.0000 MHz	AERONAUTICAL MOBILE (R) <hr/> S5.111 <hr/> S5.198 <hr/> S5.199 <hr/> S5.200 <hr/> AERONAUTICAL MOBILE (R), ICAO Annex 10 TB 93038 concerning Maritime Emergency Position Indicating Radio Beacons (EPIRBs)(121.5 MHz) TB 94051 concerning Maritime-satellite Emergency Position Indicating Radio Beacons (EPIRBs) operating on 121.5 MHz and 406.025 TB 95066 concerning VHF direction finders and supplementary VHF receivers for use in the maritime radio service.
136.0000-137.0000 MHz	AERONAUTICAL MOBILE (R) <hr/> S5.203 <hr/> AERONAUTICAL MOBILE (R), ICAO Annex 10
137.0000-137.0250 MHz	SPACE OPERATION (space-Earth) <hr/> METEOROLOGICAL-SATELLITE (space-Earth) <hr/> SPACE RESEARCH (space-Earth) <hr/> MOBILE-SATELLITE (space-Earth) [1][2] <hr/> S5.208 <hr/> [1] S5.208A <hr/> [2] S5.209 <hr/> Reception of Meteorological Satellites.

Frequency band	Danish Allocation
137.0250-137.1750 MHz	SPACE OPERATION (space-Earth)
	METEOROLOGICAL-SATELLITE (space-Earth)
	SPACE RESEARCH (space-Earth)
	Mobile-Satellite (space-Earth) [1][2]
	S5.208
	[1] S5.208A
	[2] S5.209
	Reception of Meteorological Satellites.
137.1750-137.8250 MHz	SPACE OPERATION (space-Earth)
	METEOROLOGICAL-SATELLITE (space-Earth)
	SPACE RESEARCH (space-Earth)
	MOBILE-SATELLITE (space-Earth) [1][2]
	S5.208
	[1] S5.208A
	[2] S5.209
	Reception of Meteorological Satellites.
137.8250-138.0000 MHz	SPACE OPERATION (space-Earth)
	METEOROLOGICAL-SATELLITE (space-Earth)
	SPACE RESEARCH (space-Earth)
	Mobile-Satellite (space-Earth) [1][2]
	S5.208
	[1] S5.208A
	[2] S5.209
	Reception of Meteorological Satellites.

Frequency band	Danish Allocation
138.0000-143.6000 MHz	<p>AERONAUTICAL MOBILE (OR)</p> <hr/> <p>LAND MOBILE</p> <hr/> <p>MARITIME MOBILE</p> <hr/> <p>S5.211</p> <hr/> <p>Civil and Military</p> <p>138.250-142.070 MHz: Wireless Microphones. Order No 733.</p> <p>ERC/DEC (96) 15 on Wireless Microphones.</p> <p>TB 94045 rev. A concerning Wireless Microphones.</p> <p>138.2-138.45 MHz: ERC/REC 70-03E on Short Range Devices, Annex 1.</p> <p>ERC/DEC (98) 05 on Approval regulations for Short Range Devices (25 MHz to 1000 MHz).</p> <p>ERC/DEC (95) 02 on Approval of Land Mobile equipment using angle modulation.</p> <p>ERC/DEC (96) 07 on Approval of Land Mobile equipment for data transmission.</p> <p>ERC/DEC (96) 11 on Approval of Land Mobile equipment with integral antenna and intended for analogue speech.</p> <p>ERC/DEC (96) 14 on Approval of Land Mobile equipment with integral antenna and intended for data transmission.</p>
143.6000-143.6500 MHz	<p>AERONAUTICAL MOBILE (OR)</p> <hr/> <p>SPACE RESEARCH (space-Earth)</p> <hr/> <p>LAND MOBILE</p> <hr/> <p>MARITIME MOBILE</p> <hr/> <p>S5.211</p> <hr/> <p>Civil and Military</p> <p>ERC/DEC (95) 02 on Approval of Land Mobile equipment using angle modulation.</p> <p>ERC/DEC (96) 07 on Approval of Land Mobile equipment for data transmission.</p> <p>ERC/DEC (96) 11 on Approval of Land Mobile equipment with integral antenna and intended for analogue speech.</p>

Denmark

Frequency band	Danish Allocation
	ERC/DEC (96) 14 on Approval of Land Mobile equipment with integral antenna and intended for data transmission.
143.6500-144.0000 MHz	AERONAUTICAL MOBILE (OR)
	LAND MOBILE
	MARITIME MOBILE
	S5.211
	Civil and Military ERC/DEC (95) 02 on Approval of Land Mobile equipment using angle modulation. ERC/DEC (96) 07 on Approval of Land Mobile equipment for data transmission. ERC/DEC (96) 11 on Approval of Land Mobile equipment with integral antenna and intended for analogue speech. ERC/DEC (96) 14 on Approval of Land Mobile equipment with integral antenna and intended for data transmission.
144.0000-146.0000 MHz	AMATEUR
	AMATEUR-SATELLITE
	Amateur: Order No 734.
146.0000-148.0000 MHz	MOBILE except Aeronautical Mobile (R)
	146.0125 MHz: Personal alarm. Order No 733.
	TB 94046 rev. B concerning Personal Alarms.
	146.0375 and 146.0625 MHz: TB 94061 concerning On-site Paging.
	ERC/DEC (96) 19 on On-site paging equipment.
	146.1125-148.0000 MHz FB (ML: 150.1125-152.0000 MHz) including possibilities for services in simplex.
	TB 93018 rev. A concerning Land Mobile Data Transmitting Equipment.
TB 92026 rev. B concerning Land Mobile VHF/UHF Radio Telephones.	
TB 96083 concerning hand held Land Mobile equipment for data transmission.	

Denmark

Frequency band	Danish Allocation
	<p>TB 95067 concerning hand held Land Mobile equipment.</p> <p>ERC/DEC (95) 02 on Approval of Land Mobile equipment using angle modulation.</p> <p>ERC/DEC (96) 07 on Approval of Land Mobile equipment for data transmission.</p> <p>ERC/DEC (96) 11 on Approval of Land Mobile equipment with integral antenna and intended for analogue speech.</p> <p>ERC/DEC (96) 14 on Approval of Land Mobile equipment with integral antenna and intended for data transmission.</p>
<p>148.0000-149.9000 MHz</p>	<p>MOBILE except Aeronautical Mobile (R)</p> <hr/> <p>MOBILE-SATELLITE (Earth-space) [1]</p> <hr/> <p>[1] S5.209</p> <hr/> <p>S5.218</p> <hr/> <p>S5.219</p> <hr/> <p>S5.221</p> <hr/> <p>149.00-149.90 MHz Military, exclusive</p> <p>148.0000-148.9625 MHz FB (ML: 152.0000-152.9625 MHz) including possibilities for services in simplex.</p> <p>TB 93018 rev. A concerning Land Mobile Data Transmitting Equipment.</p> <p>TB 92026 rev. B concerning Land Mobile VHF/UHF Radio Telephones.</p> <p>TB 96083 concerning hand held Land Mobile equipment for data transmission.</p> <p>TB 95067 concerning hand held Land Mobile equipment.</p> <p>ERC/DEC (95) 02 on Approval of Land Mobile equipment using angle modulation.</p> <p>ERC/DEC (96) 07 on Approval of Land Mobile equipment for data transmission.</p> <p>ERC/DEC (96) 11 on Approval of Land Mobile equipment with integral antenna and intended for analogue speech.</p> <p>ERC/DEC (96) 14 on Approval of Land Mobile equipment with integral antenna and intended for data transmission.</p>

Frequency band	Danish Allocation
149.9000-150.0500 MHz	RADIONAVIGATION-SATELLITE [3]
	LAND MOBILE-SATELLITE (Earth-space) [1][2]
	[1] S5.209
	S5.220
	S5.222
	S5.223
	[2] S5.224A
	[3] S5.224B
	<p>149.90-150.00 MHz Military, exclusive</p> <p>TB 93018 rev. A concerning Land Mobile Data Transmitting Equipment.</p> <p>TB 92026 rev. B concerning Land Mobile VHF/UHF Radio Telephones.</p> <p>TB 95067 concerning hand held Land Mobile equipment.</p> <p>TB 96083 concerning hand held Land Mobile equipment for data transmission.</p> <p>ERC/DEC (96) 07 on Approval of Land Mobile equipment for data transmission.</p> <p>ERC/DEC (96) 11 on Approval of Land Mobile equipment with integral antenna and intended for analogue speech.</p> <p>ERC/DEC (96) 14 on Approval of Land Mobile equipment with integral antenna and intended for data transmission.</p>
	150.0500-153.0000 MHz
RADIO ASTRONOMY	
S5.149	
<p>150.1125-152.9625 MHz ML (FB: 146.1125-148.9625 MHz) including possibilities for services in simplex.</p> <p>TB 93018 rev. A concerning Land Mobile Data Transmitting Equipment.</p> <p>TB 92026 rev. B concerning Land Mobile VHF/UHF Radio Telephones.</p> <p>TB 95067 concerning hand held Land Mobile equipment.</p> <p>TB 96083 concerning hand held Land Mobile equipment for data</p>	

Denmark

Frequency band	Danish Allocation
	<p>transmission.</p> <p>ERC/DEC (95) 02 on Approval of Land Mobile equipment using angle modulation.</p> <p>ERC/DEC (96) 07 on Approval of Land Mobile equipment for data transmission.</p> <p>ERC/DEC (96) 11 on Approval of Land Mobile equipment with integral antenna and intended for analogue speech.</p> <p>ERC/DEC (96) 14 on Approval of Land Mobile equipment with integral antenna and intended for data transmission.</p>
153.0000-154.0000 MHz	<p>MOBILE except Aeronautical Mobile (R)</p> <hr/> <p>Military, exclusive</p>
154.0000-156.7625 MHz	<p>MOBILE except Aeronautical Mobile (R)</p> <hr/> <p>S5.226</p> <hr/> <p>S5.227</p> <hr/> <p>154.00-155.00 MHz FB ML</p> <p>TB 93018 rev. A concerning Land Mobile Data Transmitting Equipment.</p> <p>TB 92026 rev. B concerning Land Mobile VHF/UHF Radio Telephones.</p> <p>TB 95067 concerning hand held Land Mobile equipment.</p> <p>TB 96083 concerning hand held Land Mobile equipment for data transmission.</p> <p>155.00-156.00 MHz: National Maritime</p> <p>156.025-156.7625 MHz: Maritime Mobile, RR APP 18</p> <p>TB 93019 concerning Maritime VHF Radiotelephones.</p> <p>TB 94055 concerning GMDSS Equipment in the VHF bands.</p> <p>TB 95066 concerning VHF direction finders and supplementary VHF receivers for use in the maritime radio service.</p> <p>ERC/DEC (95) 02 on Approval of Land Mobile equipment using angle modulation.</p> <p>ERC/DEC (96) 07 on Approval of Land Mobile equipment for data transmission.</p> <p>ERC/DEC (96) 11 on Approval of Land Mobile equipment with integral</p>

Denmark

Frequency band	Danish Allocation
	<p>antenna and intended for analogue speech.</p> <p>ERC/DEC (96) 14 on Approval of Land Mobile equipment with integral antenna and intended for data transmission.</p> <p>ERC/DEC (96) 20 on Maritime Radiotelephone transmitters/Receivers.</p>
<p>156.7625-156.8375 MHz</p>	<p>MARITIME MOBILE (distress and calling)</p> <hr/> <p>S5.111</p> <hr/> <p>S5.226</p> <hr/> <p>Maritime Mobile, RR APP 18</p> <p>TB 93019 concerning Maritime VHF Radiotelephones.</p> <p>TB 94055 concerning GMDSS Equipment in the VHF bands.</p> <p>TB 95066 concerning VHF direction finders and supplementary VHF receivers for use in the maritime radio service.</p> <p>ERC/DEC (96) 07 on Approval of Land Mobile equipment for data transmission.</p> <p>ERC/DEC (96) 11 on Approval of Land Mobile equipment with integral antenna and intended for analogue speech.</p> <p>ERC/DEC (96) 14 on Approval of Land Mobile equipment with integral antenna and intended for data transmission.</p> <p>ERC/DEC (96) 20 on Maritime Radiotelephone transmitters/Receivers.</p>
<p>156.8375-174.0000 MHz</p>	<p>MOBILE except Aeronautical Mobile</p> <hr/> <p>S5.226</p> <hr/> <p>157.625-160.625 MHz FB ML including possibilities for simplex.</p> <p>160.625-160.950 MHz: Maritime Mobile, RR APP 18</p> <p>160.975-161.475 MHz FB ML</p> <p>161.500-162.025 MHz: Maritime Mobile, RR APP 18</p> <p>TB 93019 concerning Maritime VHF Radiotelephones.</p>

Denmark

Frequency band	Danish Allocation
	<p>TB 94055 concerning GMDSS Equipment in the VHF bands.</p> <p>TB 95066 concerning VHF direction finders and supplementary VHF receivers for use in the maritime radio service.</p> <p>165.600-174.000 MHz: FB ML including possibilities for services in simplex.</p> <p>169.400-169.800 MHz: ERMES, Order No 733.</p> <p>ERC/DEC (94) 02 on ERMES</p> <p>TB 95068 concerning ERMES terminals.</p> <p>ERC/DEC (96) 19 on On-site Paging.</p> <p>161.075, 161.175, 172.025 and 172.050 MHz: TB 95061 concerning On-site Paging.</p> <p>TB 93018 rev. A concerning Land Mobile Data Transmitting Equipment.</p> <p>TB 92026 rev. B concerning Land Mobile VHF/UHF Radio Telephones.</p> <p>TB 95067 concerning hand held Land Mobile equipment.</p> <p>TB 96083 concerning hand held Land Mobile equipment for data transmission.</p> <p>ERC/DEC (95) 02 on Approval of Land Mobile equipment using angle modulation.</p> <p>ERC/DEC (96) 07 on Approval of Land Mobile equipment for data transmission.</p> <p>ERC/DEC (96) 11 on Approval of Land Mobile equipment with integral antenna and intended for analogue speech.</p> <p>ERC/DEC (96) 14 on Approval of Land Mobile equipment with integral antenna and intended for data transmission.</p> <p>ERC/DEC (96) 20 on Maritime Radiotelephone transmitters/Receivers.</p>
174.0000-223.0000 MHz	<p>BROADCASTING</p> <hr/> <p>LAND MOBILE [1]</p> <hr/> <p>[1] S5.235</p> <hr/> <p>Broadcasting: Stockholm Agreement 1961 (CH 5-11) complemented by Chester Agreement 1997.</p> <p>219.584-221.120 MHz: Danish T-DAB Block (11C).</p> <p>Wiesbaden Arrangement 1995 (T-DAB).</p> <p>CEPT Rec T/R 52-02 on The Introduction of T-DAB.</p>

Denmark

Frequency band	Danish Allocation
	<p>180.5-222.5 MHz: Wireless Microphones, Order No 733.</p> <p>TB 94045 rev. A concerning wireless Microphones (Aids for handicapped only).</p> <p>ERC/DEC (96) 15 on Wireless Mics.</p>
<p>223.0000-230.0000 MHz</p>	<p>BROADCASTING</p> <hr/> <p>MOBILE</p> <hr/> <p>224.900 and 224.925 MHz: Personal alarm. Order No 733.</p> <p>TB 94046 rev. B concerning Personal Alarms.</p> <p>223.3-224.9 MHz and 229.0-230.0 MHz: TB 94047 rev. A concerning Medical Telemetry</p> <p>226.592-228.128 MHz: Danish T-DAB block (12C).</p> <p>Wiesbaden Arrangement 1995 (T-DAB).</p> <p>CEPT Rec T/R 52-02 on The Introduction of T-DAB.</p>
<p>230.0000-235.0000 MHz</p>	<p>MOBILE</p> <hr/> <p>Military</p> <p>230.0 -231.0 MHz: TB 94047 rev. A concerning Medical Telemetry</p> <p>231.728-233.264 MHz: Danish T-DAB block (13B).</p> <p>Wiesbaden Arrangement 1995 (T-DAB).</p> <p>CEPT Rec T/R 52-02 on The Introduction of T-DAB.</p>
<p>235.0000-267.0000 MHz</p>	<p>MOBILE</p> <hr/> <p>S5.111</p> <hr/> <p>S5.199</p> <hr/> <p>S5.254</p> <hr/> <p>S5.256</p> <hr/> <p>240-267 MHz Military, exclusive</p> <p>TB 93038 concerning Maritime Emergency Position Indicating Radio Beacons (EPIRBs)(243 MHz)</p>

Denmark

Frequency band	Danish Allocation
	TB 95066 concerning VHF direction finders and supplementary VHF receivers for use in the maritime radio service.

Denmark

Frequency band	Danish Allocation
267.0000-272.0000 MHz	MOBILE <hr/> Space Operation (space-Earth) <hr/> S5.254 <hr/> S5.257 <hr/> Military, exclusive
272.0000-273.0000 MHz	SPACE OPERATION (space-Earth) <hr/> MOBILE <hr/> S5.254 <hr/> Military, exclusive
273.0000-312.0000 MHz	MOBILE <hr/> S5.254 <hr/> Military, exclusive
312.0000-315.0000 MHz	MOBILE <hr/> Mobile-Satellite (Earth-space) [1][2] <hr/> [1] S5.254 <hr/> [2] S5.255 <hr/> Military, exclusive
315.0000-322.0000 MHz	MOBILE <hr/> S5.254 <hr/> Military, exclusive
322.0000-328.6000 MHz	MOBILE <hr/> RADIO ASTRONOMY <hr/> S5.149 <hr/> Military, exclusive

Denmark

Frequency band	Danish Allocation
328.6000-335.4000 MHz	<p data-bbox="544 293 1161 331">AERONAUTICAL RADIONAVIGATION [1]</p> <hr/> <p data-bbox="544 367 699 405">[1] S5.258</p> <hr/> <p data-bbox="544 441 651 479">S5.259</p> <hr/> <p data-bbox="544 515 740 553">Civil and Military</p> <p data-bbox="544 577 708 616">ILS glide path</p>
335.4000-387.0000 MHz	<p data-bbox="544 712 671 750">MOBILE</p> <hr/> <p data-bbox="544 786 651 824">S5.254</p> <hr/> <p data-bbox="544 860 632 898">Military</p> <p data-bbox="544 922 1417 983">380-381.5 MHz ML (FB: 390-391.5 MHz): Expected Introduction of Mobile Digital Trunked Radio Systems.</p> <p data-bbox="544 1012 1453 1072">383.5-385.0 MHz ML (FB 393.5-395.0 MHz): Expected Introduction of Mobile Digital Trunked Radio Systems.</p> <p data-bbox="544 1102 1262 1140">ERC/DEC (96) 01 on Digital Mobile Trunked Radio Systems.</p>
387.0000-390.0000 MHz	<p data-bbox="544 1171 671 1209">MOBILE</p> <hr/> <p data-bbox="544 1245 1123 1283">Mobile-Satellite (space-Earth) [1][2][3]</p> <hr/> <p data-bbox="544 1319 719 1357">[1] S5.208A</p> <hr/> <p data-bbox="544 1393 699 1431">[2] S5.254</p> <hr/> <p data-bbox="544 1467 699 1505">[3] S5.255</p> <hr/> <p data-bbox="544 1541 756 1579">Military, exclusive</p>
390.0000-399.9000 MHz	<p data-bbox="544 1608 671 1646">MOBILE</p> <hr/> <p data-bbox="544 1682 651 1720">S5.254</p> <hr/> <p data-bbox="544 1756 632 1794">Military</p> <p data-bbox="544 1818 1417 1879">390-391.5 MHz FB (ML: 380-381.5 MHz): Expected Introduction of Mobile Digital Trunked Radio Systems.</p> <p data-bbox="544 1908 1453 1968">393.5-395.0 MHz FB (ML: 383.5-385.0 MHz): Expected Introduction of Mobile Digital Trunked Radio Systems.</p> <p data-bbox="544 1998 1262 2036">ERC/DEC (96) 01 on Digital Mobile Trunked Radio Systems.</p>

Frequency band	Danish Allocation
399.9000-400.0500 MHz	RADIONAVIGATION-SATELLITE [2][4] MOBILE-SATELLITE [1][3] [1] S5.209 [2] S5.222 [3] S5.224A [4] S5.224B S5.220 S5.260
400.0500-400.1500 MHz	STANDARD FREQUENCY AND TIME SIGNAL-SATELLITE (400.1 MHz) S5.261
400.1500-401.0000 MHz	METEOROLOGICAL AIDS <hr/> METEOROLOGICAL-SATELLITE (space-Earth) <hr/> SPACE RESEARCH (space-Earth) [3] <hr/> MOBILE-SATELLITE (space-Earth) [1][2] <hr/> Space Operation (space-Earth) <hr/> [1] S5.208A <hr/> [2] S5.209 <hr/> [3] S5.263 <hr/> S5.264 <hr/> Meteorological Radio Sondes

Denmark

Frequency band	Danish Allocation
401.0000-402.0000 MHz	METEOROLOGICAL AIDS
	SPACE OPERATION (space-Earth)
	EARTH EXPLORATION-SATELLITE (Earth-space)
	METEOROLOGICAL-SATELLITE (Earth-space)
	Meteorological Radio Sondes
402.0000-403.0000 MHz	METEOROLOGICAL AIDS
	EARTH EXPLORATION-SATELLITE (Earth-space)
	METEOROLOGICAL-SATELLITE (Earth-space)
	Meteorological Radio Sondes
	ERC/ERC 70-03 on Short Range Devices (Medical Implants)
403.0000-406.0000 MHz	METEOROLOGICAL AIDS
	403-405 MHz: ERC/ERC 70-03 on Short Range Devices (Medical Implants)
406.0000-406.1000 MHz	MOBILE-SATELLITE (Earth-space)
	S5.266
	S5.267
	COSPAS SARSAT
	TB 94051 concerning Maritime-satellite Emergency Position Indicating Radio Beacons (EPIRBs) operating on 121.5 MHz and 406.025
406.1000-410.0000 MHz	MOBILE except Aeronautical Mobile
	RADIO ASTRONOMY
	S5.149
	407-407.1875 MHz: Traffic Surveillance System
	408.0 MHz (+/- 250 kHz) Radiolocation, SYLEDIS, Oslo Agreement 1983
ERC/DEC (95) 02 on Approval of Land Mobile equipment using angle	

Frequency band	Danish Allocation
	<p>modulation.</p> <p>ERC/DEC (96) 07 on Approval of Land Mobile equipment for data transmission.</p> <p>ERC/DEC (96) 11 on Approval of Land Mobile equipment with integral antenna and intended for analogue speech.</p> <p>ERC/DEC (96) 14 on Approval of Land Mobile equipment with integral antenna and intended for data transmission.</p>
410.0000-420.0000 MHz	<p>MOBILE except Aeronautical Mobile</p> <hr/> <p>SPACE RESEARCH (space-space) [1]</p> <hr/> <p>[1] S5.268</p> <hr/> <p>410-411 and 419-420 MHz: FB ML</p> <p>411-412 MHz ML (FB: 421-422 MHz): Expected introduction of TETRA.</p> <p>ERC/DEC (96) 04 on TETRA</p> <p>412-413 MHz and 417-418 MHz Military, exclusive</p> <p>413-416 MHz and 418-419 MHz: Reportage Equipment.</p> <p>TB 93018 rev. A concerning Land Mobile Data Transmitting Equipment.</p> <p>ERC/DEC (95) 02 on Approval of Land Mobile equipment using angle modulation.</p> <p>ERC/DEC (96) 07 on Approval of Land Mobile equipment for data transmission.</p> <p>ERC/DEC (96) 11 on Approval of Land Mobile equipment with integral antenna and intended for analogue speech.</p> <p>ERC/DEC (96) 14 on Approval of Land Mobile equipment with integral antenna and intended for data transmission.</p>
420.0000-430.0000 MHz	<p>MOBILE except Aeronautical Mobile</p> <hr/> <p>Radiolocation</p> <hr/> <p>422.000-424.975 MHz FB ML</p> <p>425.000-429.975 MHz FB (ML: 440.000-444.975 MHz)</p> <p>422.175, 422.525 and 422.725 MHz: TB 94061 concerning On-site Paging.</p> <p>ERC/DEC (96) 19 on On-site paging equipment.</p>

Denmark

Frequency band	Danish Allocation
	<p>421-422 MHz FB (ML: 411-412 MHz): Expected Introduction of TETRA. ERC/DEC (96) 04 on TETRA</p> <p>TB 93018 rev. A concerning Land Mobile Data Transmitting Equipment.</p> <p>TB 92026 rev. B concerning Land Mobile VHF/UHF Radio Telephones.</p> <p>422-430 MHz: TB 95067 concerning hand held Land Mobile equipment.</p> <p>TB 96083 concerning hand held Land Mobile equipment for data transmission.</p> <p>ERC/DEC (95) 02 on Approval of Land Mobile equipment using angle modulation.</p> <p>ERC/DEC (96) 07 on Approval of Land Mobile equipment for data transmission.</p> <p>ERC/DEC (96) 11 on Approval of Land Mobile equipment with integral antenna and intended for analogue speech.</p> <p>ERC/DEC (96) 14 on Approval of Land Mobile equipment with integral antenna and intended for data transmission.</p>
430.0000-432.0000 MHz	<p>MOBILE except Aeronautical Mobile</p> <hr/> <p>430.000-431.975 MHz FB (ML: 438.000-439.975 MHz)</p> <p>TB 93018 rev. A concerning Land Mobile Data Transmitting Equipment.</p> <p>TB 92026 rev. B concerning Land Mobile VHF/UHF Radio Telephones.</p> <p>TB 95067 concerning hand held Land Mobile equipment.</p> <p>TB 96083 concerning hand held Land Mobile equipment for data transmission.</p> <p>ERC/DEC (95) 02 on Approval of Land Mobile equipment using angle modulation.</p> <p>ERC/DEC (96) 07 on Approval of Land Mobile equipment for data transmission.</p> <p>ERC/DEC (96) 11 on Approval of Land Mobile equipment with integral antenna and intended for analogue speech.</p> <p>ERC/DEC (96) 14 on Approval of Land Mobile equipment with integral antenna and intended for data transmission.</p>

Denmark

Frequency band	Danish Allocation
<p>432.0000-438.0000 MHz</p>	<p>AMATEUR</p> <hr/> <p>S5.138</p> <hr/> <p>Amateur: Order No 734.</p> <p>433.575-434.025 MHz: Remote Control (Models) and Alarm purposes. Order No 733.</p> <p>433.575-434.025 MHz: TB 97085 concerning Remote Control (Models) and Alarm purposes.</p> <p>433.05-434.79 MHz: Low Power Devices, Order No 733.</p> <p>433.05-434.79 MHz: TB 94060 rev. A concerning Low Power Devices with integral antenna.</p> <p>433.950, 434.000 and 434.050 MHz: TB 97092 concerning Low Power Devices for datacommunication.</p> <p>433.92 MHz: TB 97084 concerning alarms in motor vehicles.</p> <p>433.05-434.79 MHz: ERC/REC 70-03E on Short Range Devices, Annex 1.</p> <p>ERC/DEC (98) 05 on Approval regulations for Short Range Devices (25 MHz to 1000 Mhz).</p>
<p>438.0000-440.0000 MHz</p>	<p>MOBILE except Aeronautical Mobile</p> <hr/> <p>438.000-439.975 MHz ML (FB: 430.000-431.975 MHz)</p> <p>TB 93018 rev. A concerning Land Mobile Data Transmitting Equipment.</p> <p>TB 92026 rev. B concerning Land Mobile VHF/UHF Radio Telephones.</p> <p>TB 95067 concerning hand held Land Mobile equipment.</p> <p>TB 96083 concerning hand held Land Mobile equipment for data transmission.</p> <p>ERC/DEC (95) 02 on Approval of Land Mobile equipment using angle modulation.</p> <p>ERC/DEC (96) 07 on Approval of Land Mobile equipment for data transmission.</p> <p>ERC/DEC (96) 11 on Approval of Land Mobile equipment with integral antenna and intended for analogue speech.</p> <p>ERC/DEC (96) 14 on Approval of Land Mobile equipment with integral antenna and intended for data transmission.</p>

Frequency band	Danish Allocation
440.0000-450.0000 MHz	<p data-bbox="544 293 1098 331">MOBILE except Aeronautical Mobile</p> <hr/> <p data-bbox="544 369 651 405">S5.286</p> <hr/> <p data-bbox="544 443 1193 472">440.000-444.975 MHz ML (FB: 425.000-429.975 MHz)</p> <p data-bbox="544 504 895 533">445.000-449.975 MHz FB ML</p> <p data-bbox="544 564 1374 593">448.250 and 448.275 MHz: Personal Alarm equipment. Order No 733.</p> <p data-bbox="544 624 1086 654">TB 94046 rev. B concerning Personal Alarms.</p> <p data-bbox="544 685 1390 714">448.000-448.500 MHz: TB 94047 rev. B concerning Medical Telemetry.</p> <p data-bbox="544 745 1374 775">445.000-447.9950 MHz: TB 94048 rev. A concerning Remote Control.</p> <p data-bbox="544 806 1390 875">445.900, 445.925, 445.950, 445.975, 447.200, 447.225 MHz: TB 94061 concerning On-site Paging.</p> <p data-bbox="544 907 986 936">ERC/DEC (96) 19 on On-site Paging.</p> <p data-bbox="544 967 1390 996">TB 93018 rev. A concerning Land Mobile Data Transmitting Equipment.</p> <p data-bbox="544 1028 1385 1057">TB 92026 rev. B concerning Land Mobile VHF/UHF Radio Telephones.</p> <p data-bbox="544 1088 1214 1117">TB 95067 concerning hand held Land Mobile equipment.</p> <p data-bbox="544 1149 1310 1218">TB 96083 concerning hand held Land Mobile equipment for data transmission.</p> <p data-bbox="544 1249 1369 1319">ERC/DEC (95) 02 on Approval of Land Mobile equipment using angle modulation.</p> <p data-bbox="544 1350 1321 1420">ERC/DEC (96) 07 on Approval of Land Mobile equipment for data transmission.</p> <p data-bbox="544 1451 1374 1520">ERC/DEC (96) 11 on Approval of Land Mobile equipment with integral antenna and intended for analogue speech.</p> <p data-bbox="544 1552 1374 1621">ERC/DEC (96) 14 on Approval of Land Mobile equipment with integral antenna and intended for data transmission.</p>
450.0000-455.0000 MHz	<p data-bbox="544 1619 671 1657">MOBILE</p> <hr/> <p data-bbox="544 1695 651 1731">S5.286</p> <hr/> <p data-bbox="544 1769 1193 1798">450.000-452.975 MHz ML (FB: 460.000-462.975 MHz)</p> <p data-bbox="544 1830 1445 1859">453.000-455.000 MHz ML (FB: 463.000-465.000 MHz) NMT, Order No 733.</p> <p data-bbox="544 1890 991 1919">TB 96079 concerning NMT terminals.</p> <p data-bbox="544 1951 1390 1980">TB 93018 rev. A concerning Land Mobile Data Transmitting Equipment.</p>

Denmark

Frequency band	Danish Allocation
	<p>TB 92026 rev. B concerning Land Mobile VHF/UHF Radio Telephones.</p> <p>TB 95067 concerning hand held Land Mobile equipment.</p> <p>TB 96083 concerning hand held Land Mobile equipment for data transmission.</p> <p>ERC/DEC (95) 02 on Approval of Land Mobile equipment using angle modulation.</p> <p>ERC/DEC (96) 07 on Approval of Land Mobile equipment for data transmission.</p> <p>ERC/DEC (96) 11 on Approval of Land Mobile equipment with integral antenna and intended for analogue speech.</p> <p>ERC/DEC (96) 14 on Approval of Land Mobile equipment with integral antenna and intended for data transmission.</p>
<p>455.0000-456.0000 MHz</p>	<p>MOBILE</p> <hr/> <p>ML (FB: 465.000-466.000 MHz) NMT, Order No 733.</p> <p>TB 96079 concerning NMT terminals.</p> <p>TB 93018 rev. A concerning Land Mobile Data Transmitting Equipment.</p> <p>TB 92026 rev. B concerning Land Mobile VHF/UHF Radio Telephones.</p> <p>TB 95067 concerning hand held Land Mobile equipment.</p> <p>TB 96083 concerning hand held Land Mobile equipment for data transmission.</p> <p>ERC/DEC (95) 02 on Approval of Land Mobile equipment using angle modulation.</p> <p>ERC/DEC (96) 07 on Approval of Land Mobile equipment for data transmission.</p> <p>ERC/DEC (96) 11 on Approval of Land Mobile equipment with integral antenna and intended for analogue speech.</p> <p>ERC/DEC (96) 14 on Approval of Land Mobile equipment with integral antenna and intended for data transmission.</p>

Denmark

Frequency band	Danish Allocation
456.0000-459.0000 MHz	<p>MOBILE</p> <hr/> <p>S5.287</p> <hr/> <p>456.000-457.475 MHz ML (FB: 466.000-467.475 MHz) NMT, Order No 733. TB 96079 concerning NMT terminals. RR APP 20</p> <p>457.525-457.575 MHz Maritime on Board. TB 93017 concerning Portable Maritime UHF Radiotelephones.</p> <p>457.600-458.100 MHz ML (FB: 467.600-468.100 MHz) 458.100-459.000 MHz ML (FB: 468.100-469.000 MHz)</p> <p>TB 93018 rev. A concerning Land Mobile Data Transmitting Equipment. TB 92026 rev. B concerning Land Mobile VHF/UHF Radio Telephones. TB 95067 concerning hand held Land Mobile equipment. TB 96083 concerning hand held Land Mobile equipment for data transmission.</p> <p>ERC/DEC (95) 02 on Approval of Land Mobile equipment using angle modulation. ERC/DEC (96) 07 on Approval of Land Mobile equipment for data transmission. ERC/DEC (96) 11 on Approval of Land Mobile equipment with integral antenna and intended for analogue speech. ERC/DEC (96) 14 on Approval of Land Mobile equipment with integral antenna and intended for data transmission.</p>
459.0000-460.0000 MHz	<p>MOBILE</p> <hr/> <p>459.000-459.975 MHz ML (FB: 469.000-469.975 MHz)</p> <p>TB 93018 rev. A concerning Land Mobile Data Transmitting Equipment. TB 92026 rev. B concerning Land Mobile VHF/UHF Radio Telephones. TB 95067 concerning hand held Land Mobile equipment. TB 96083 concerning hand held Land Mobile equipment for data transmission.</p> <p>ERC/DEC (95) 02 on Approval of Land Mobile equipment using angle modulation. ERC/DEC (96) 07 on Approval of Land Mobile equipment for data transmission.</p>

Denmark

Frequency band	Danish Allocation
	<p>ERC/DEC (96) 11 on Approval of Land Mobile equipment with integral antenna and intended for analogue speech.</p> <p>ERC/DEC (96) 14 on Approval of Land Mobile equipment with integral antenna and intended for data transmission.</p>
460.0000-470.0000 MHz	<p>MOBILE</p> <hr/> <p>Meteorological-Satellite (space-Earth)</p> <hr/> <p>S5.287</p> <hr/> <p>S5.289</p> <hr/> <p>460.000-462.975 MHz FB (ML: 450.000-452.975 MHz)</p> <p>463.000-467.475 MHz FB (ML: 453.000-457.475 MHz) NMT, Order No 733.</p> <p>TB 96079 concerning NMT terminals.</p> <p>RR APP 20</p> <p>467.525-467.575 MHz Maritime on Board</p> <p>TB 93017 concerning Portable Maritime UHF Radiotelephones.</p> <p>467.600-468.100 MHz FB (ML: 457.600-458.100 MHz)</p> <p>468.100-469.975 MHz FB (ML: 458.100-459.975 MHz)</p> <p>469.500, 469.650 and 469.950 MHz Public Paging Service, OPS, Order No 733.</p> <p>TB 96078 concerning OPS terminals.</p> <p>TB 93018 rev. A concerning Land Mobile Data Transmitting Equipment.</p> <p>TB 92026 rev. B concerning Land Mobile VHF/UHF Radio Telephones.</p> <p>TB 95067 concerning hand held Land Mobile equipment.</p> <p>TB 96083 concerning hand held Land Mobile equipment for data transmission.</p> <p>ERC/DEC (95) 02 on Approval of Land Mobile equipment using angle modulation.</p> <p>ERC/DEC (96) 07 on Approval of Land Mobile equipment for data transmission.</p> <p>ERC/DEC (96) 11 on Approval of Land Mobile equipment with integral antenna and intended for analogue speech.</p> <p>ERC/DEC (96) 14 on Approval of Land Mobile equipment with integral</p>

Denmark

Frequency band	Danish Allocation
	antenna and intended for data transmission.

Frequency band	Danish Allocation
470.0000-790.0000 MHz	<p>BROADCASTING</p> <hr/> <p>Land Mobile</p> <hr/> <p>S5.149</p> <hr/> <p>S5.291A</p> <hr/> <p>S5.306</p> <hr/> <p>S5.311</p> <hr/> <p>Broadcasting: Stockholm Agreement 1961 (CH 21-60) complemented by Chester Agreement 1997.</p>
790.0000-862.0000 MHz	<p>MOBILE except Aeronautical Mobile [1]</p> <hr/> <p>BROADCASTING</p> <hr/> <p>[1] S5.316</p> <hr/> <p>Military</p> <p>Broadcasting: Stockholm Agreement 1961 (CH 61-69) complemented by chester Agreement 1997</p> <p>800.1-819.9 MHz: Wireless Microphones. Order No 733.</p> <p>TB 93045 rev. A concerning Wireless Microphones.</p> <p>ERC/DEC (96) 15 on Wireless Microphones.</p> <p>854-862 MHz: Rapportage equipment (CH 69)</p>

Frequency band	Danish Allocation
862.0000-890.0000 MHz	<p>MOBILE except Aeronautical Mobile</p> <hr/> <p>863-865 MHz: ERC/ERC 70-03 on Short Range Devices (Wireless Audio)</p> <p>868-870 MHz: Low Power Devices, Order No 733.</p> <p>TB 94060 rev A concerning Low Power Devices with Integral Antenna.</p> <p>868.0-870.0 MHz: ERC/REC 70-03E on Short Range Devices, Annex 1.</p> <p>ERC/DEC (98) 05 on Approval regulations for Short Range Devices (25 MHz to 1000 MHz).</p> <p>869.2125 and 869.2375 MHz: Personal Alarms, Order No 733.</p> <p>869.2125 and 869.2375 MHz: TB 94046 rev B concerning Personal Alarms.</p> <p>870-876 MHz ML (FB: 915-921 MHz): Expected Introduction of TETRA.</p> <p>ERC/DEC (96) 04 on TETRA</p> <p>876-880 MHz ML (FB: 921-925 MHz): CEPT Rec T/R 25-09 on frequencies for UIC Railways is likely to be used.</p> <p>882.0125-882.4375 MHz ML (FB: 927.0125-927.4375 MHz) city tram</p> <p>880-890 MHz ML (FB: 925-935 MHz): E-GSM, ERC/DEC (97) 02.</p> <p>TB 92027 rev D concerning GSM</p> <p>ERC/DEC (95) 02 on Approval of Land Mobile equipment using angle modulation.</p> <p>ERC/DEC (96) 07 on Approval of Land Mobile equipment for data transmission.</p> <p>ERC/DEC (96) 11 on Approval of Land Mobile equipment with integral antenna and intended for analogue speech.</p> <p>ERC/DEC (96) 14 on Approval of Land Mobile equipment with integral antenna and intended for data transmission.</p>
890.0000-942.0000 MHz	<p>MOBILE except Aeronautical Mobile</p> <hr/> <p>890.000-896.000 MHz ML (FB: 935.000-941.000 MHz) NMT, Order No 733.</p> <p>TB 96079 concerning NMT terminals.</p> <p>896.0-914.0 MHz ML (FB: 941.0-959.0 MHz) GSM, Order No 733.</p> <p>TB 92027 rev D concerning GSM</p> <p>ERC/DEC (94) 01 on GSM</p> <p>ERC/DEC (95) 01 on free circulation of equipment.</p>

Denmark

Frequency band	Danish Allocation
	<p>ERC/DEC (98) 06 on Approval of GSM equipment (radio aspects)</p> <p>ERC/DEC (98) 07 on Approval of GSM equipment (repeaters)</p> <p>GSM frequency planning: CEPT Rec T/R 20-08 is applied where no bilateral agreement exist.</p> <p>914.0125-914.9875 MHz ML (FB: 959.0125-959.9875 MHz) CT1. Order No 733.</p> <p>TB 94053 rev B concerning CT1.</p> <p>915-921 MHz FB (ML: 870-876 MHz): Expected Introduction of TETRA.</p> <p>915-921 MHz: ERC/DEC (96) 04 on TETRA</p> <p>921-925 MHz FB (ML: 876-880 MHz): CEPT Rec T/R 25-09 on frequencies for UIC is likely to be used.</p> <p>925-935 MHz FB (ML: 880-890 MHz) E- GSM, ERC/DEC (97) 02</p> <p>927.0125-927.4375 MHz FB (ML: 882.0125-882.4375 MHz) city tram</p> <p>ERC/DEC (95) 02 on Approval of Land Mobile equipment using angle modulation.</p> <p>ERC/DEC (96) 07 on Approval of Land Mobile equipment for data transmission.</p> <p>ERC/DEC (96) 11 on Approval of Land Mobile equipment with integral antenna and intended for analogue speech.</p> <p>ERC/DEC (96) 14 on Approval of Land Mobile equipment with integral antenna and intended for data transmission.</p>
<p>942.0000-960.0000 MHz</p>	<p>MOBILE except Aeronautical Mobile</p> <hr/> <p>940.8-958.8 MHz FB (ML: 896.0-913.8 MHz) GSM, Order No 733.</p> <p>TB 92027 rev D concerning GSM</p> <p>ERC/DEC (94) 01 on GSM</p> <p>ERC/DEC (98) 06 on Approval of GSM equipment (radio aspects)</p> <p>ERC/DEC (98) 07 on Approval of GSM equipment (repeaters)</p>

Denmark

Frequency band	Danish Allocation
	<p>GSM frequency planning: CEPT Rec T/R 20-08 is applied where no bilateral agreement exist.</p> <p>959.0125-959.9875 MHz FB (ML: 914.0125-914.9875) CT1, Order No 733.</p> <p>TB 94053 rev B concerning CT1.</p> <p>TB 92026 rev. B concerning Land Mobile VHF/UHF Radio Telephones.</p> <p>ERC/DEC (95) 02 on Approval of Land Mobile equipment using angle modulation.</p> <p>ERC/DEC (96) 07 on Approval of Land Mobile equipment for data transmission.</p> <p>ERC/DEC (96) 11 on Approval of Land Mobile equipment with integral antenna and intended for analogue speech.</p> <p>ERC/DEC (96) 14 on Approval of Land Mobile equipment with integral antenna and intended for data transmission.</p>
960.0000-1215.0000 MHz	<p>AERONAUTICAL RADIONAVIGATION</p> <hr/> <p>S5.328</p> <hr/> <p>IFF, JTIDS, TACAN, DME, SSR, MIDS</p>
1215.0000-1240.0000 MHz	<p>RADIONAVIGATION</p> <hr/> <p>RADIOLOCATION</p> <hr/> <p>RADIONAVIGATION-SATELLITE (space-Earth)</p> <hr/> <p>EARTH EXPLORATION-SATELLITE (active)</p> <hr/> <p>SPACE RESEARCH (active)</p> <hr/> <p>S5.332</p> <hr/> <p>Radionavigation-Satellite (GNSS)</p>
1240.0000-1260.0000 MHz	<p>RADIONAVIGATION</p> <hr/> <p>RADIOLOCATION</p> <hr/> <p>RADIONAVIGATION-SATELLITE (space-Earth)</p> <hr/> <p>Amateur</p> <hr/> <p>EARTH EXPLORATION-SATELLITE (active)</p>

Frequency band	Danish Allocation
	SPACE RESEARCH (active) <hr/> S5.332 <hr/> Aeronautical radars Amateur: Order No 734.
1260.0000-1300.0000 MHz	RADIONAVIGATION <hr/> RADIOLOCATION <hr/> Amateur <hr/> EARTH EXPLORATION-SATELLITE (active) <hr/> SPACE RESEARCH (active) <hr/> S5.332 <hr/> Aeronautical radars Amateur: Order No 734.
1300.0000-1350.0000 MHz	AERONAUTICAL RADIONAVIGATION [1] <hr/> Radiolocation <hr/> S5.149 <hr/> [1] S5.337 <hr/> Aeronautical radars
1350.0000-1400.0000 MHz	MOBILE <hr/> S5.149 <hr/> S5.339 <hr/> Military, Tactical
1400.0000-1427.0000 MHz	EARTH EXPLORATION-SATELLITE (passive) <hr/> RADIO ASTRONOMY <hr/> SPACE RESEARCH (passive) <hr/> All emissions are prohibited (S5.340)

Denmark

Frequency band	Danish Allocation
1427.0000-1429.0000 MHz	SPACE OPERATION (Earth-space)
	MOBILE except Aeronautical Mobile Military, Tactical
1429.0000-1452.0000 MHz	FIXED
	MOBILE except Aeronautical Mobile Military, Tactical
	1450-1452 MHz: Fixed, only between platforms in the Northsee
1452.0000-1492.0000 MHz	FIXED
	MOBILE except Aeronautical Mobile
	Broadcasting-Satellite
	Broadcasting [1]
	[1] S5.345 Military, Tactical S-DAB: RR RES 528. WRC-92. Wiesbaden Arrangement 1995 (T-DAB). 1452-1467.5 MHz: CEPT Rec T/R 52-02 on The Introduction of T-DAB. Fixed, only between platforms in the Northsee
1492.0000-1525.0000 MHz	FIXED
	MOBILE except Aeronautical Mobile Military, Tactical
	Fixed, only between platforms in the Northsee
1525.0000-1530.0000 MHz	SPACE OPERATION (space-Earth)
	MOBILE-SATELLITE (space-Earth)
	Mobile except Aeronautical Mobile

Frequency band	Danish Allocation
	<p>Earth Exploration-Satellite</p> <hr/> <p>S5.351</p> <hr/> <p>S5.354</p> <hr/> <p>Aeronautical Mobile Satellite Service</p> <p>Maritime Mobile Satellite Service</p> <p>Land Mobile Satellite Stations, Order No 733.</p> <p>TB 97089 concerning Land Mobile Earth Stations (LMES)</p> <p>ERC/DEC (95) 01 on free circulation of radio equipment.</p> <p>ERC/REC 21-15E on free circulation and use for land mobile satellite service terminals.</p>
<p>1530.0000-1533.0000 MHz</p>	<p>SPACE OPERATION (space-Earth)</p> <hr/> <p>MOBILE-SATELLITE (space-Earth) [1]</p> <hr/> <p>Mobile except Aeronautical Mobile</p> <hr/> <p>Earth Exploration-Satellite</p> <hr/> <p>S5.351</p> <hr/> <p>[1] S5.353A</p> <hr/> <p>S5.354</p> <hr/> <p>Maritime Mobile Satellite Service</p> <p>Aeronautical Mobile Satellite Service</p> <p>Land Mobile Satellite Stations, Order No 733.</p> <p>TB 97089 concerning Land Mobile Earth Stations (LMES)</p> <p>ERC/DEC (95) 01 on free circulation of radio equipment.</p> <p>ERC/REC 21-15E on free circulation and use for land mobile satellite service terminals.</p>
<p>1533.0000-1535.0000 MHz</p>	<p>SPACE OPERATION (space-Earth)</p> <hr/> <p>MOBILE-SATELLITE (space-Earth) [1]</p>

Frequency band	Danish Allocation
	<p>Earth Exploration-Satellite</p> <hr/> <p>Land Mobile-Satellite (space-Earth)</p> <hr/> <p>S5.351</p> <hr/> <p>[1] S5.353A</p> <hr/> <p>S5.354</p> <hr/> <p>Maritime Mobile Satellite Service</p> <p>Aeronautical Mobile Satellite Service</p> <p>Land Mobile Satellite Stations, Order No 733.</p> <p>TB 97089 concerning Land Mobile Earth Stations (LMES)</p> <p>ERC/DEC (95) 01 on free circulation of radio equipment.</p> <p>ERC/REC 21-15E on free circulation and use for land mobile satellite service terminals.</p>
<p>1535.0000-1544.0000 MHz</p>	<p>MOBILE-SATELLITE (space-Earth)</p> <hr/> <p>S5.351</p> <hr/> <p>S5.353</p> <hr/> <p>S5.354</p> <hr/> <p>Maritime Mobile Satellite Service</p> <p>Aeronautical Mobile Satellite Service</p> <p>Land Mobile Satellite Stations, Order No 733.</p> <p>TB 97089 concerning Land Mobile Earth Stations (LMES)</p> <p>ERC/DEC (95) 01 on free circulation of radio equipment.</p> <p>ERC/REC 21-15E on free circulation and use for land mobile satellite service terminals.</p>
<p>1544.0000-1545.0000 MHz</p>	<p>MOBILE-SATELLITE (space-Earth)</p> <hr/> <p>S5.354</p> <hr/> <p>Aeronautical Mobile Satellite Service</p>

Denmark

Frequency band	Danish Allocation
	<p>Maritime Mobile Satellite Service</p> <p>Land Mobile Satellite Stations, Order No 733.</p> <p>ERC/DEC (95) 01 on free circulation of radio equipment.</p> <p>ERC/REC 21-15E on free circulation and use for land mobile satellite service terminals.</p> <p>GMDSS</p>
<p>1545.0000-1555.0000 MHz</p>	<p>MOBILE-SATELLITE (space-Earth)</p> <hr/> <p>S5.354</p> <hr/> <p>S5.357</p> <hr/> <p>S5.362A</p> <hr/> <p>Aeronautical Mobile Satellite Service</p> <p>Maritime Mobile Satellite Service</p> <p>Land Mobile Satellite Stations, Order No 733.</p> <p>ERC/DEC (95) 01 on free circulation of radio equipment.</p> <p>ERC/REC 21-15E on free circulation and use for land mobile satellite service terminals.</p>
<p>1555.0000-1559.0000 MHz</p>	<p>MOBILE-SATELLITE (space-Earth)</p> <hr/> <p>S5.351</p> <hr/> <p>S5.354</p> <hr/> <p>Maritime Mobile Satellite Service</p> <p>Aeronautical Mobile Satellite Service</p> <p>Land Mobile Satellite Stations, Order No 733.</p> <p>TB 97089 concerning Land Mobile Earth Stations (LMES)</p> <p>ERC/DEC (95) 01 on free circulation of radio equipment.</p> <p>ERC/REC 21-15E on free circulation and use for land mobile satellite service terminals.</p>
<p>1559.0000-1610.0000 MHz</p>	<p>AERONAUTICAL RADIONAVIGATION</p> <hr/> <p>RADIONAVIGATION-SATELLITE (space-Earth)</p>

Denmark

Frequency band	Danish Allocation
	Radionavigation-Satellite (GNSS)

Frequency band	Danish Allocation
1610.0000-1610.6000 MHz	<p>AERONAUTICAL RADIONAVIGATION</p> <hr/> <p>MOBILE-SATELLITE (Earth-space)</p> <hr/> <p>S5.364</p> <hr/> <p>S5.366</p> <hr/> <p>S5.367</p> <hr/> <p>S5.371</p> <hr/> <p>S5.372</p> <hr/> <p>ERC/DEC (97) 03 on spectrum for S-PCS.</p> <p>ERC/DEC (97) 05 on free circulation, use and licensing of Mobile earth stations of S-PCS.</p> <p>ECTRA/DEC (97) 02 on harmonisation of authorisation conditions and coordination of procedures in the field of S-PCS.</p> <p>Findings from Milestone Review Committee (MRC)</p>
1610.6000-1613.8000 MHz	<p>AERONAUTICAL RADIONAVIGATION</p> <hr/> <p>MOBILE-SATELLITE (Earth-space)</p> <hr/> <p>RADIO ASTRONOMY</p> <hr/> <p>S5.149</p> <hr/> <p>S5.364</p> <hr/> <p>S5.366</p> <hr/> <p>S5.367</p> <hr/> <p>S5.371</p> <hr/> <p>S5.372</p> <hr/> <p>ERC/DEC (97) 03 on spectrum for S-PCS.</p> <p>ERC/DEC (97) 05 on free circulation, use and licensing of Mobile earth stations of S-PCS.</p> <p>ECTRA/DEC (97) 02 on harmonisation of authorisation conditions and coordination of procedures in the field of S-PCS.</p>

Denmark

Frequency band	Danish Allocation
	Findings from Milestone Review Committee (MRC)

Frequency band	Danish Allocation
1613.8000-1626.5000 MHz	<p>AERONAUTICAL RADIONAVIGATION</p> <hr/> <p>MOBILE-SATELLITE (Earth-space)</p> <hr/> <p>Mobile-Satellite (space-Earth)</p> <hr/> <p>S5.364</p> <hr/> <p>S5.365</p> <hr/> <p>S5.366</p> <hr/> <p>S5.367</p> <hr/> <p>S5.371</p> <hr/> <p>S5.372</p> <hr/> <p>ERC/DEC (97) 03 on spectrum for S-PCS.</p> <p>ERC/DEC (97) 05 on free circulation, use and licensing of Mobile earth stations of S-PCS.</p> <p>ECTRA/DEC (97) 02 on harmonisation of authorisation conditions and coordination of procedures in the field of S-PCS.</p> <p>Findings from Milestone Review Committee (MRC)</p>
1626.5000-1631.5000 MHz	<p>MOBILE-SATELLITE (Earth-space)</p> <hr/> <p>S5.351</p> <hr/> <p>S5.353A</p> <hr/> <p>S5.354</p> <hr/> <p>Maritime Mobile Satellite Service</p> <p>Aeronautical Mobile Satellite Service</p> <p>Land Mobile Satellite Stations, Order No 733.</p> <p>TB 97089 concerning Land Mobile Earth Stations (LMES)</p> <p>ERC/DEC (95) 01 on free circulation of radio equipment.</p> <p>ERC/REC 21-15E on free circulation and use for land mobile satellite service terminals.</p>

Denmark

Frequency band	Danish Allocation
1631.5000-1634.5000 MHz	MOBILE-SATELLITE (Earth-space) <hr/> S5.351 <hr/> S5.353A <hr/> S5.354 <hr/> S5.374 <hr/> Maritime Mobile Satellite Service Aeronautical Mobile Satellite Service Land Mobile Satellite Stations, Order No 733. TB 97089 concerning Land Mobile Earth Stations (LMES) ERC/DEC (95) 01 on free circulation of radio equipment. ERC/REC 21-15E on free circulation and use for land mobile satellite service terminals.
1634.5000-1645.5000 MHz	MOBILE-SATELLITE (Earth-space) <hr/> S5.351 <hr/> S5.353A <hr/> S5.354 <hr/> Maritime Mobile Satellite Service Aeronautical Mobile Satellite Service Land Mobile Satellite Stations, Order No 733. TB 97089 concerning Land Mobile Earth Stations (LMES) ERC/DEC (95) 01 on free circulation of radio equipment. ERC/REC 21-15E on free circulation and use for land mobile satellite service terminals.
1645.5000-1646.5000 MHz	MOBILE-SATELLITE (Earth-space) <hr/> S5.354 <hr/> Maritime Mobile Satellite Service Aeronautical Mobile Satellite Service

Denmark

Frequency band	Danish Allocation
	<p>Land Mobile Satellite Stations, Order No 733.</p> <p>ERC/DEC (95) 01 on free circulation of radio equipment.</p> <p>ERC/REC 21-15E on free circulation and use for land mobile satellite service terminals.</p>
<p>1646.5000-1656.5000 MHz</p>	<p>MOBILE-SATELLITE (Earth-space)</p> <hr/> <p>S5.351</p> <hr/> <p>S5.354</p> <hr/> <p>S5.353A</p> <hr/> <p>Maritime Mobile Satellite Service</p> <p>Aeronautical Mobile Satellite Service</p> <p>Land Mobile Satellite Stations, Order No 733.</p> <p>ERC/DEC (95) 01 on free circulation of radio equipment.</p> <p>ERC/REC 21-15E on free circulation and use for land mobile satellite service terminals.</p>
<p>1656.5000-1660.0000 MHz</p>	<p>MOBILE-SATELLITE (Earth-space)</p> <hr/> <p>S5.351</p> <hr/> <p>S5.354</p> <hr/> <p>S5.374</p> <hr/> <p>Maritime Mobile Satellite Service</p> <p>Aeronautical Mobile Satellite Service</p> <p>Land Mobile Satellite Stations, Order No 733.</p> <p>TB 97089 concerning Land Mobile Earth Stations (LMES)</p> <p>ERC/DEC (95) 01 on free circulation of radio equipment.</p> <p>ERC/REC 21-15E on free circulation and use for land mobile satellite service terminals.</p>

Denmark

Frequency band	Danish Allocation
1660.0000-1660.5000 MHz	RADIO ASTRONOMY <hr/> MOBILE-SATELLITE (Earth-space) <hr/> S5.149 <hr/> S5.351 <hr/> S5.354 <hr/> S5.376A <hr/> Maritime Mobile Satellite Service Aeronautical Mobile Satellite Service Land Mobile Satellite Stations, Order No 733. TB 97089 concerning Land Mobile Earth Stations (LMES) ERC/DEC (95) 01 on free circulation of radio equipment. ERC/REC 21-15E on free circulation and use for land mobile satellite service terminals.
1660.5000-1668.4000 MHz	RADIO ASTRONOMY SPACE RESEARCH (passive) Mobile except Aeronautical Mobile S5.149 S5.379A
1668.4000-1670.0000 MHz	METEOROLOGICAL AIDS MOBILE except Aeronautical Mobile RADIO ASTRONOMY S5.149
1670.0000-1675.0000 MHz	MOBILE <hr/> ERC/DEC (92) 01 on TFTS (Schiver Plan)

Frequency band	Danish Allocation
1675.0000-1690.0000 MHz	METEOROLOGICAL AIDS
	METEOROLOGICAL-SATELLITE (space-Earth)
	METEOSAT Radio Sondes
1690.0000-1700.0000 MHz	METEOROLOGICAL AIDS
	METEOROLOGICAL-SATELLITE (space-Earth)
	S5.289 1691 and 1694.5 MHz: Reception of Pictures from Weather Satellites METEOSAT Radio Sondes
1700.0000-1710.0000 MHz	METEOROLOGICAL-SATELLITE (space-Earth)
	S5.289 METEOSAT
1710.0000-1930.0000 MHz	FIXED
	MOBILE
	S5.380
	S5.385
	1885-1930 MHz: IMT-2000/UMTS (S5.388) 1710-1785 MHz ML (FB: 1805-1880 MHz) DCS1800. Order No 733. 1710.2-1717.2 and 1731.8-1774.8 MHz (1805.2-1812.2 and 1826.8 -1869.8 MHz): DCS1800 base station TB 97090 on DCS1800 terminals. ERC/DEC (95) 03 on DCS1800 CEPT Rec T/R on 22-07 on DCS1800 1800-1805 MHz: ERC/DEC (92) 01 on TFTS (Schiever Plan) 1880-1900 MHz: DECT. Order No 733. TB 94054 rev C concerning DECT

Denmark

Frequency band	Danish Allocation
	<p>ERC/DEC (94) 03 on DECT</p> <p>ERC/DEC (95) 01 on free circulation of equipment.</p> <p>Fixed, only between platforms in the Northsee</p>
1930.0000-1970.0000 MHz	<p>MOBILE</p> <hr/> <p>IMT-2000/UMTS (S5.388)</p> <p>1968.5 MHz: Moving Cameras. Will be phased out.</p>
1970.0000-1980.0000 MHz	<p>MOBILE</p> <hr/> <p>IMT-2000/UMTS (S5.388)</p> <p>1968.5 MHz: Moving Cameras. Will be phased out.</p>
1980.0000-2010.0000 MHz	<p>MOBILE</p> <hr/> <p>MOBILE-SATELLITE (Earth-space)</p> <hr/> <p>S5.389A</p> <hr/> <p>IMT-2000/UMTS (S5.388)</p> <p>1989.5 MHz: Moving Cameras. Will be phased out.</p> <p>ERC/DEC (97) 03 on spectrum for S-PCS.</p> <p>ERC/DEC (97) 04 on transitional arrangements for fixed services and the mobile-satellite service.</p> <p>ERC/DEC (97) 05 on free circulation, use and licensing of Mobile earth stations of S-PCS.</p> <p>ECTRA/DEC (97) 02 on harmonisation of authorisation conditions and coordination of procedures in the field of S-PCS.</p> <p>Findings from Milestone Review Committee (MRC)</p>
2010.0000-2025.0000 MHz	<p>MOBILE</p> <hr/> <p>IMT-2000/UMTS (S5.388)</p>

Denmark

Frequency band	Danish Allocation
2025.0000-2110.0000 MHz	<p>MOBILE</p> <hr/> <p>SPACE RESEARCH (Earth-space) (space-space)</p> <hr/> <p>SPACE OPERATION (Earth-space) (space-space)</p> <hr/> <p>EARTH EXPLORATION-SATELLITE (Earth-space) (space-space)</p> <hr/> <p>2032, 2046, 2060, 2073.5, 2074, 2088 and 2102 MHz: Moving Cameras. Will be phased out.</p>
2110.0000-2120.0000 MHz	<p>MOBILE</p> <hr/> <p>SPACE RESEARCH (deep space)(Earth-space)</p> <hr/> <p>IMT-2000/UMTS (S5.388)</p>
2120.0000-2160.0000 MHz	<p>MOBILE</p> <hr/> <p>IMT-2000/UMTS (S5.388)</p>
2160.0000-2170.0000 MHz	<p>MOBILE</p> <hr/> <p>IMT-2000/UMTS (S5.388)</p>
2170.0000-2200.0000 MHz	<p>MOBILE</p> <hr/> <p>MOBILE-SATELLITE (space-Earth)</p> <hr/> <p>S5.389A</p> <hr/> <p>IMT-2000/UMTS (S5.388)</p> <p>2194.5 MHz: Moving Cameras. Will be phased out.</p> <p>ERC/DEC (97) 03 on spectrum for S-PCS.</p> <p>ERC/DEC (97) 04 on transitional arrangements for fixed services and the mobile-satellite service.</p> <p>ERC/DEC (97) 05 on free circulation, use and licensing of Mobile earth stations of S-PCS.</p> <p>ECTRA/DEC (97) 02 on harmonisation of authorisation conditions and coordination of procedures in the field of S-PCS.</p> <p>Findings from Milestone Review Committee (MRC)</p>

Denmark

Frequency band	Danish Allocation
2200.0000-2290.0000 MHz	SPACE RESEARCH (space-Earth) (space-space) SPACE OPERATION (space-Earth) (space-space) EARTH EXPLORATION-SATELLITE (space-Earth) (space-space) MOBILE
2290.0000-2300.0000 MHz	MOBILE except Aeronautical Mobile SPACE RESEARCH (deep space)(space-Earth)
2300.0000-2450.0000 MHz	FIXED <hr/> MOBILE <hr/> Amateur <hr/> Radiolocation <hr/> S5.150 <hr/> Amateur: Order No 734. 2400-2450 MHz: Radio Local Area Network (RLAN), Order No 733. TB 94049 concerning RLAN. ERC/DEC (96) 17 on Spread Spectrum Equipment 2400-2450 MHz: Low Power Devices, Order No 733. TB 94060 rev A concerning Low Power Devices with Integral Antenna. 2400-2450 MHz: ERC/REC 70-03E on Short Range Devices, Annex 1, 3, 4 and 6. Fixed, only between platforms in the Northsee
2450.0000-2483.5000 MHz	FIXED <hr/> MOBILE <hr/> Radiolocation <hr/> S5.150 <hr/> Radio Local Area Network (RLAN), Order No 733. TB 94049 concerning RLAN.

Frequency band	Danish Allocation
	<p>ERC/DEC (96) 17 on Spread Spectrum Equipment</p> <p>Low Power Devices, Order No 733.</p> <p>TB 94060 rev A concerning Low Power Devices with Integral Antenna.</p> <p>ERC/REC 70-03E on Short Range Devices, Annex 1, 3, 4 and 6.</p> <p>Fixed, only between platforms in the Northsee</p>
2483.5000-2500.0000 MHz	<p>MOBILE-SATELLITE (space-Earth)</p> <hr/> <p>S5.150</p> <hr/> <p>S5.371</p> <hr/> <p>ERC/DEC (97) 03 on spectrum for S-PCS.</p> <p>ERC/DEC (97) 05 on free circulation, use and licensing of Mobile earth stations of S-PCS.</p> <p>ECTRA/DEC (97) 02 on harmonisation of authorisation conditions and coordination of procedures in the field of S-PCS.</p> <p>Findings from Milestone Review Committee (MRC)</p>
2500.0000-2520.0000 MHz	<p>MOBILE except Aeronautical Mobile</p> <p>MOBILE-SATELLITE (space-Earth)</p> <p>S5.403</p> <p>S5.414</p>
2520.0000-2655.0000 MHz	<p>MOBILE except Aeronautical Mobile</p> <hr/> <p>BROADCASTING-SATELLITE [1][2]</p> <hr/> <p>S5.339</p> <hr/> <p>S5.403</p> <hr/> <p>[1] S5.413</p> <hr/> <p>[2] S5.416</p> <hr/> <p>ENG/OB, Cordless Cameras, ERC/REC 25-10E.</p> <p>CEPT Rec T/R 13-02 on channeling arrangement.</p>
2655.0000-2670.0000	MOBILE except Aeronautical Mobile

Denmark

Frequency band	Danish Allocation
MHz	<p>BROADCASTING-SATELLITE [1][2]</p> <hr/> <p>Earth Exploration-Satellite (passive)</p> <hr/> <p>Radio Astronomy</p> <hr/> <p>Space Research (passive)</p> <hr/> <p>S5.149</p> <hr/> <p>[1] S5.413</p> <hr/> <p>[2] S5.416</p> <hr/> <p>S5.420</p> <hr/> <p>ENG/OB, Cordless Cameras, ERC/REC 25-10E. CEPT Rec T/R 13-02 on channeling arrangement.</p>
2670.0000-2690.0000 MHz	<p>MOBILE except Aeronautical Mobile</p> <p>MOBILE-SATELLITE (Earth-space)</p> <p>Earth Exploration-Satellite (passive)</p> <p>Radio Astronomy</p> <p>Space Research (passive)</p> <p>S5.149</p> <p>S5.419</p> <p>S5.420</p>
2690.0000-2700.0000 MHz	<p>EARTH EXPLORATION-SATELLITE (passive)</p> <p>RADIO ASTRONOMY</p> <p>SPACE RESEARCH (passive)</p> <p>All emissions are prohibited (S5.340)</p>

Frequency band	Danish Allocation
2700.0000-2900.0000 MHz	AERONAUTICAL RADIONAVIGATION [1] <hr/> Radiolocation <hr/> [1] S5.337 <hr/> S5.423 <hr/> Aeronautical radars Meteorological radars
2900.0000-3100.0000 MHz	RADIONAVIGATION [1] <hr/> Radiolocation <hr/> S5.425 <hr/> [1] S5.426 <hr/> S5.427 <hr/> Radars
3100.0000-3300.0000 MHz	RADIOLOCATION <hr/> Earth Exploration-Satellite (active) <hr/> Space Research (active) <hr/> S5.149 <hr/> Military Radars Active sensors
3300.0000-3400.0000 MHz	RADIOLOCATION <hr/> S5.149 <hr/> Military, Radiolocation Radars

Denmark

Frequency band	Danish Allocation

Denmark

Frequency band	Danish Allocation
3400.0000-3600.0000 MHz	FIXED-SATELLITE (space-Earth)
	FIXED
	Radiolocation
	3410-3600 MHz: Wireless local loop under study 3400-3410 MHz: Military, airborne radars 3400-3600 MHz: ERC/REC 14-03E on channeling arrangement.
3600.0000-4200.0000 MHz	FIXED
	FIXED-SATELLITE (space-Earth)
	Fixed Links, ERC/REC 12-08E Inmarsat and INTELSAT Earth Stations
4200.0000-4400.0000 MHz	AERONAUTICAL RADIONAVIGATION
	S5.438
	S5.440
	Radio Altimeters
4400.0000-4500.0000 MHz	FIXED
	MOBILE Military, exclusive
4500.0000-4800.0000 MHz	FIXED
	FIXED-SATELLITE (space-Earth) [1]
	MOBILE
	[1] S5.441 Military, exclusive
4800.0000-4990.0000 MHz	FIXED
	MOBILE [1]

Denmark

Frequency band	Danish Allocation
	Radio Astronomy <hr/> S5.149 <hr/> S5.339 <hr/> [1] S5.442 <hr/> Military, exclusive
4990.0000-5000.0000 MHz	FIXED <hr/> MOBILE except Aeronautical Mobile <hr/> RADIO ASTRONOMY <hr/> Space Research (passive) <hr/> S5.149 <hr/> Military, exclusive
5000.0000-5150.0000 MHz	AERONAUTICAL RADIONAVIGATION <hr/> S5.367 <hr/> S5.444 <hr/> S5.444A <hr/> ICAO Annex 10 5030-5090 MHz: Microwave Landing Systems (MLS)
5150.0000-5250.0000 MHz	MOBILE <hr/> FIXED-SATELLITE (Earth-space) [1] <hr/> S5.447 <hr/> [1] S5.447A <hr/> S5.447B <hr/> S5.447C <hr/> ERC/DEC (96) 03 on HIPERLAN

Denmark

Frequency band	Danish Allocation
	ERC/REC 70-03E on Short Range Devices, Annex 3 (HIPERLAN)

Frequency band	Danish Allocation
5250.0000-5255.0000 MHz	RADIOLOCATION <hr/> EARTH EXPLORATION-SATELLITE (active) <hr/> SPACE RESEARCH <hr/> S5.333 <hr/> S5.447D <hr/> S5.448A <hr/> Radars Active sensors ERC/REC 70-03E on Short Range Devices, Annex 3 (HIPERLAN)
5255.0000-5350.0000 MHz	RADIOLOCATION <hr/> EARTH EXPLORATION-SATELLITE (active) <hr/> SPACE RESEARCH (active) <hr/> S5.448A <hr/> Radars Active sensors 5255-5300 MHz: ERC/REC 70-03E on Short Range Devices, Annex 3 (HIPERLAN)
5350.0000-5460.0000 MHz	AERONAUTICAL RADIONAVIGATION [1] <hr/> EARTH EXPLORATION-SATELLITE (active) <hr/> Radiolocation <hr/> S5.448B <hr/> [1] S5.449 <hr/> Radars Active sensors

Frequency band	Danish Allocation
5460.0000-5470.0000 MHz	RADIONAVIGATION [1] <hr/> Radiolocation <hr/> [1] S5.449 <hr/> Radars Active sensors
5470.0000-5650.0000 MHz	MARITIME RADIONAVIGATION <hr/> Radiolocation <hr/> S5.452 <hr/> Radars Active sensors
5650.0000-5725.0000 MHz	RADIOLOCATION <hr/> Amateur <hr/> Space Research (deep space) <hr/> S5.282 <hr/> Radars Active sensors Amateur: Order No 734. Amateur Radio Beacon Stations.
5725.0000-5830.0000 MHz	FIXED-SATELLITE (Earth-space) <hr/> RADIOLOCATION <hr/> Mobile <hr/> Amateur <hr/> S5.150 <hr/> 5795-5815 MHz: RTT, Order No 733. ERC/DEC (92) 02 on RTT

Denmark

Frequency band	Danish Allocation
	<p>Low Power Devices, Order No 733.</p> <p>TB 94060 rev A concerning Low Power Devices with Integral Antenna.</p> <p>ERC/REC 70-03E on Short Range Devices, Annex 1 and 5.</p> <p>Amateur: Order No 734.</p> <p>Amateur Radio Beacon Stations.</p>
<p>5830.0000-5850.0000 MHz</p>	<p>FIXED-SATELLITE (Earth-space)</p> <hr/> <p>RADIOLOCATION</p> <hr/> <p>Mobile</p> <hr/> <p>Amateur</p> <hr/> <p>Amateur-Satellite</p> <hr/> <p>S5.150</p> <hr/> <p>Amateur: Order No 734.</p> <p>Amateur Radio Beacon Stations.</p> <p>Low Power Devices, Order No 733.</p> <p>TB 94060 rev A concerning Low Power Devices with Integral Antenna.</p> <p>ERC/REC 70-03E on Short Range Devices, Annex 1.</p>
<p>5850.0000-5925.0000 MHz</p>	<p>FIXED</p> <hr/> <p>FIXED-SATELLITE (Earth-space)</p> <hr/> <p>MOBILE</p> <hr/> <p>S5.150</p> <hr/> <p>5850-5875 MHz: Low Power Devices, Order No 733.</p> <p>5850-5875 MHz: TB 94060 rev A concerning Low Power Devices with Integral Antenna.</p> <p>ERC/REC 70-03E on Short Range Devices, Annex 1.</p>
<p>5925.0000-6700.0000 MHz</p>	<p>FIXED</p> <hr/> <p>FIXED-SATELLITE (Earth-space)</p>

Denmark

Frequency band	Danish Allocation
	<p>MOBILE</p> <hr/> <p>S5.149</p> <hr/> <p>S5.440</p> <hr/> <p>S5.458</p> <hr/> <p>5925-6425 MHz: Fixed Links, ERC/REC 14-01E 6425-6700 MHz: Fixed Links, ERC/REC 14-02E Inmarsat and INTELSAT Earth Stations</p>
<p>6700.0000-7075.0000 MHz</p>	<p>FIXED</p> <hr/> <p>MOBILE</p> <hr/> <p>FIXED-SATELLITE (Earth-space) (space-Earth) [1]</p> <hr/> <p>[1] S5.441</p> <hr/> <p>S5.458</p> <hr/> <p>S5.458A</p> <hr/> <p>S5.458B</p> <hr/> <p>S5.458C</p> <hr/> <p>Fixed Links, ERC/REC 14-02E</p>
<p>7075.0000-7250.0000 MHz</p>	<p>FIXED</p> <hr/> <p>MOBILE</p> <hr/> <p>S5.458</p> <hr/> <p>S5.460</p> <hr/> <p>7075-7125 MHz: Fixed Links, ERC/REC 14-02E. 7125-7250 MHz: Fixed Links, ITU-R F.385-6.</p>
<p>7250.0000-7300.0000 MHz</p>	<p>FIXED</p> <hr/> <p>FIXED-SATELLITE (space-Earth)</p>

Denmark

Frequency band	Danish Allocation
	<p>MOBILE</p> <hr/> <p>S5.461</p> <hr/> <p>Military, Fixed-Satellite down-link (7975-8025 MHz, up-link)</p> <p>Fixed Links, ITU-R F.385-6.</p>

Denmark

Frequency band	Danish Allocation
7300.0000-7450.0000 MHz	FIXED FIXED-SATELLITE (space-Earth) MOBILE except Aeronautical Mobile S5.461 Fixed Links, ITU-R F.385-6.
7450.0000-7550.0000 MHz	FIXED FIXED-SATELLITE (space-Earth) METEOROLOGICAL-SATELLITE (space-Earth) MOBILE except Aeronautical Mobile S5.461A Fixed Links, ITU-R F.385-6.
7550.0000-7750.0000 MHz	FIXED FIXED-SATELLITE (space-Earth) MOBILE except Aeronautical Mobile 7550-7725 MHz: Fixed Links, ITU-R F.385-6.
7750.0000-7850.0000 MHz	FIXED MOBILE except Aeronautical Mobile METEOROLOGICAL-SATELLITE (space-Earth) S5.461B
7850.0000-7900.0000 MHz	FIXED MOBILE except Aeronautical Mobile
7900.0000-8025.0000 MHz	FIXED FIXED-SATELLITE (Earth-space) MOBILE S5.461 7975-8025 MHz (up-link): Military, Fixed-Satellite, (7250-7300 MHz, down-link)

Denmark

Frequency band	Danish Allocation
8025.0000-8175.0000 MHz	FIXED FIXED-SATELLITE (Earth-space) MOBILE EARTH EXPLORATION-SATELLITE (space-Earth) S5.462 S5.462A S5.463
8175.0000-8215.0000 MHz	FIXED FIXED-SATELLITE (Earth-space) MOBILE METEOROLOGICAL-SATELLITE (Earth-space) EARTH EXPLORATION-SATELLITE (space-Earth) S5.462 S5.462A S5.463
8215.0000-8400.0000 MHz	FIXED <hr/> FIXED-SATELLITE (Earth-space) <hr/> EARTH EXPLORATION-SATELLITE (space-Earth) <hr/> S5.462 <hr/> S5.462A <hr/> S5.463 <hr/> 8275-8400 MHz: Fixed links, ITU-R F.386-4.
8400.0000-8500.0000 MHz	FIXED <hr/> SPACE RESEARCH (space-Earth) [1] <hr/> [1] S5.465 <hr/> Fixed Links, ITU-R F.386-4

Frequency band	Danish Allocation
8500.0000-8550.0000 MHz	RADIOLOCATION Radars Active sensors
8550.0000-8650.0000 MHz	RADIOLOCATION SPACE RESEARCH (active) EARTH EXPLORATION-SATELLITE (active) S5.463A Radars Active sensors
8650.0000-8750.0000 MHz	RADIOLOCATION Radars Active sensors
8750.0000-8850.0000 MHz	RADIOLOCATION AERONAUTICAL RADIONAVIGATION [1] [1] S5.470 Radars Active sensors
8850.0000-9000.0000 MHz	RADIOLOCATION MARITIME RADIONAVIGATION [1] [1] S5.472 Radars Active sensors
9000.0000-9200.0000 MHz	AERONAUTICAL RADIONAVIGATION [1] Radiolocation [1] S5.337 Radars

Frequency band	Danish Allocation
9200.0000-9300.0000 MHz	<p>Active sensors</p> <hr/> <p>RADIOLOCATION</p> <hr/> <p>MARITIME RADIONAVIGATION [1]</p> <hr/> <p>[1] S5.472</p> <hr/> <p>S5.474</p> <hr/> <p>Radars</p> <p>Active sensors</p> <p>TB 93037 concerning 9 GHz Radar Transponders (SART)</p> <p>ERC/REC 70-03E on Short Range Devices, Annex 6 .</p>
9300.0000-9500.0000 MHz	<p>RADIONAVIGATION [1]</p> <hr/> <p>Radiolocation</p> <hr/> <p>S5.427</p> <hr/> <p>S5.474</p> <hr/> <p>S5.475</p> <hr/> <p>[1] S5.476</p> <hr/> <p>Radars</p> <p>TB 93037 concerning 9 GHz Radar Transponders (SART)</p> <p>ERC/REC 70-03E on Short Range Devices, Annex 6-under study.</p>
9500.0000-9800.0000 MHz	<p>RADIOLOCATION</p> <hr/> <p>RADIONAVIGATION</p> <hr/> <p>EARTH EXPLORATION-SATELLITE (active)</p> <hr/> <p>SPACE RESEARCH</p> <hr/> <p>S5.476A</p> <hr/> <p>9.500-9.540 GHz: Microwave Equipment. Order No 733.</p> <p>TB 94043 rev. A concerning Equipment for Detecting Movements and for Alerts.</p> <p>ERC/REC 70-03E on Short Range Devices, Annex 6 .</p> <p>Active sensors</p>

Denmark

Frequency band	Danish Allocation
9800.0000-10000.0000 MHz	RADIOLOCATION <hr/> Fixed <hr/> S5.479 <hr/> 9800-9975 MHz: ERC/REC 70-03E on Short Range Devices-under study.
10000.0000-10450.0000 MHz	FIXED <hr/> MOBILE <hr/> RADIOLOCATION <hr/> Amateur <hr/> S5.479 <hr/> Military Amateur: Order No 734. ENG/OB, Cordless Cameras and Temporary Point to Point video links, ERC/REC 25-10E. ERC/REC 12-05E on channeling arrangement.

Denmark