

Bangladesh

Bangladesh

Subject: **Questionnaire on national radio frequency spectrum management to seek information needed for responding to Resolution 9 of the World Telecommunication Development Conference (WTDC-98, Valleta)**

**FOCAL POINT REGARDING CORRESPONDENCE
ON THIS QUESTIONNAIRE**

(PARTS I AND II)

- | | | | | |
|----|--|-------------------------------------|--|--|
| 1. | Mr. | <input checked="" type="checkbox"/> | ROBBANI | S.M. ZABED |
| | Ms | <input type="checkbox"/> | Family Name | First Name |
| 2. | Country | | BANGLADESH | |
| 3. | Name of the Administration/Organization | | MINISTRY OF POST AND TELECOMMUNICATION/FREQUENCY AND WIRELESS BOARD | |
| 4. | Title | | DIVISIONAL ENGINEER (Frequency and wireless) | |
| 5. | Address | | TELECOMMUNICATION TRAINING CENTER TEJGAON, DHAKA 1208 BANGLADESH | |
| 6. | Tel.: 880-2-9883181 | | Fax: 880-2-9884299 | E-Mail: zrobbani@hotmail.com |

*To be returned no later than 31 January 2000 to:
ITU-D Study Groups Secretariat
Telecommunication Development Bureau
Fax: +41 22 730 54 84
E-Mail: devsg2@itu.int*

Bangladesh

Section IV – Table of Frequency Allocations (extract from the RR, 1998)

27.5-47 MHz

| Read only | | | To be completed | |
|------------------------|---|----------|---|---------|
| Allocation to services | | | | |
| Region 1 | Region 2 | Region 3 | National Allocation | Remarks |
| 27.5-28 | METEOROLOGICAL AIDS FIXED MOBILE | | METEOROLOGICAL AIDS FIXED MOBILE | |
| 28-29.7 | AMATEUR AMATEUR-SATELLITE | | AMATEUR AMATEUR-SATELLITE | |
| 29.7-30.005 | FIXED MOBILE | | FIXED MOBILE | |
| 30.005-30.01 | SPACE OPERATION (satellite identification) FIXED MOBILE SPACE RESEARCH | | SPACE OPERATION (satellite identification) FIXED MOBILE SPACE RESEARCH | |
| 30.01-37.5 | FIXED MOBILE | | FIXED MOBILE | |
| 37.5-38.25 | FIXED MOBILE Radio astronomy S5.149 | | FIXED MOBILE Radio astronomy | |
| 38.25-39.986 | FIXED MOBILE | | FIXED MOBILE | |
| 39.986-40.02 | FIXED MOBILE Space research | | FIXED MOBILE Space research | |
| 40.02-40.98 | FIXED MOBILE S5.150 | | FIXED MOBILE | |
| 40.98-41.015 | FIXED MOBILE Space research S5.160 S5.161 | | FIXED MOBILE Space research | |
| 41.015-44 | FIXED MOBILE S5.160 S5.161 | | FIXED MOBILE | |
| 44-47 | FIXED MOBILE S5.162 S5.162A | | FIXED MOBILE | |

Bangladesh

47-75.2 MHz

| Read only | | | To be completed | |
|---|--|--|--|---------|
| Allocation to services | | | | |
| Region 1 | Region 2 | Region 3 | National Allocation | Remarks |
| 47-68 BROADCASTING S5.162A S5.163 S5.164 S5.165 S5.169 S5.171 | 47-50 FIXED MOBILE | 47-50 FIXED MOBILE BROADCASTING | FIXED MOBILE BROADCASTING | |
| | 50-54 AMATEUR S5.166 S5.167 S5.168 S5.170 | | AMATEUR | |
| | 54-68 BROADCASTING Fixed Mobile S5.172 | 54-68 FIXED MOBILE BROADCASTING | FIXED MOBILE BROADCASTING | |
| 68-74.8 FIXED MOBILE except aeronautical mobile S5.149 S5.174 S5.175 S5.177 S5.179 | 68-72 BROADCASTING Fixed Mobile S5.173 | 68-74.8 FIXED MOBILE S5.149 S5.176 S5.179 | FIXED MOBILE | |
| | 72-73 FIXED MOBILE | | | |
| | 73-74.6 RADIO ASTRONOMY S5.178 | | | |
| | 74.6-74.8 FIXED MOBILE | | | |
| 74.8-75.2 | AERONAUTICAL RADIONAVIGATION S5.180 S5.181 | | FIXED MOBILE AERONAUTICAL RADIONAVIGATION | |

Bangladesh

75.2-137.175 MHz

| Read only | | | To be completed | |
|--|--|---|--|---------------------------------|
| Allocation to services | | | | |
| Region 1 | Region 2 | Region 3 | National Allocation | Remarks |
| 75.2-87.5 FIXED MOBILE except aeronautical mobile S5.175 S5.179 S5.184 S5.187 | 75.2-75.4 FIXED MOBILE S5.179 | | FIXED MOBILE | |
| | 75.4-76 FIXED MOBILE | 75.4-87 FIXED MOBILE S5.149 S5.182 S5.183 S5.188 | FIXED MOBILE | |
| | 76-88 BROADCASTING Fixed Mobile | | | |
| | 87-100 FIXED MOBILE | BROADCASTING | | BROADCASTING Fixed Mobile |
| 87.5-100 BROADCASTING S5.190 | S5.185 | | | |
| | 88-100 BROADCASTING | | | |
| 100-108 | BROADCASTING S5.192 S5.194 | | BROADCASTING | |
| 328.6-335 | AERONAUTICAL RADIONAVIGATION S5.197 | | AERONAUTICAL RADIONAVIGATION | |
| 117.975-137 | AERONAUTICAL MOBILE (R) S5.111 S5.198 S5.199 S5.200 S5.201 S5.202 S5.203 S5.203A S5.203B | | AERONAUTICAL MOBILE (R) | |
| | | | 136 –137 Mhz FIXED MOBILE AERONAUTICAL MOBILE | |

Bangladesh

| | | | |
|-------------------------------|--|--|--|
| <p>137-137.025</p> | <p>SPACE OPERATION (space-to-Earth) METEOROLOGICAL-SATELLITE (space-to-Earth) MOBILE-SATELLITE (space-to-Earth) SPACE RESEARCH (space-to-Earth) Fixed Mobile except aeronautical mobile (R) S5.208A S5.209S5.204 S5.205 S5.206 S5.207 S5.208</p> | <p>137 – 138 Mhz SPACE OPERATION (space-to-Earth) METEOROLOGICAL-SATELLITE (space-to-Earth) MOBILE-SATELLITE (space-to-Earth) SPACE RESEARCH (space-to-Earth) Fixed Mobile except aeronautical mobile (R)</p> | |
| <p>137.025-137.175</p> | <p>SPACE OPERATION (space-to-Earth) METEOROLOGICAL-SATELLITE (space-to-Earth) SPACE RESEARCH (space-to-Earth) Fixed Mobile-satellite (space-to-Earth) S5.208A S5.209 Mobile except aeronautical mobile (R) S5.204 S5.205 S5.206 S5.207 S5.208</p> | | |

137.175-148 MHz

| Read only | | | To be completed | |
|-------------------------------|--|----------|--|---------|
| Allocation to services | | | | |
| Region 1 | Region 2 | Region 3 | National Allocation | Remarks |
| <p>137.175-137.825</p> | <p>SPACE OPERATION (space-to-Earth) METEOROLOGICAL-SATELLITE (space-to-Earth) MOBILE-SATELLITE (space-to-Earth) S5.208A S5.209 SPACE RESEARCH (space-to-Earth) Fixed Mobile except aeronautical mobile (R) S5.204 S5.205 S5.206 S5.207 S5.208</p> | | <p>137 – 138 Mhz SPACE OPERATION (space-to-Earth) METEOROLOGICAL-SATELLITE (space-to-Earth) MOBILE-SATELLITE (space-to-Earth) SPACE RESEARCH (space-to-Earth) Fixed Mobile except aeronautical mobile (R)</p> | |

Bangladesh

| | | | | | |
|--|---|---|---|------------------------------|--|
| 137.825-138 | | SPACE OPERATION (space-to-Earth) METEOROLOGICAL-SATELLITE (space-to-Earth) SPACE RESEARCH (space-to-Earth) Fixed Mobile-satellite (space-to-Earth) S5.208A S5.209 Mobile except aeronautical mobile (R) S5.204 S5.205 S5.206 S5.207 S5.208 | | | |
| 138-143.6 AERONAUTICAL MOBILE (OR) S5.210 S5.211 S5.212 S5.214 | 138-143.6 FIXED MOBILE RADIOLOCATION Space research (space-to-Earth) | 138-143.6 FIXED MOBILE Space research (space-to-Earth) S5.207 S5.213 | FIXED MOBILE Space research (space-to-Earth) | | |
| 143.6-143.65 AERONAUTICAL MOBILE (OR) SPACE RESEARCH (space-to-Earth) S5.211 S5.212 S5.214 | 143.6-143.65 FIXED MOBILE RADIOLOCATION SPACE RESEARCH (space-to-Earth) | 143.6-143.65 FIXED MOBILE SPACE RESEARCH (space-to-Earth) S5.207 S5.213 | FIXED MOBILE SPACE RESEARCH (space-to-Earth) | | |
| 143.65-144 AERONAUTICAL MOBILE (OR) S5.210 S5.211 S5.212 S5.214 | 143.65-144 FIXED MOBILE RADIOLOCATION Space research (space-to-Earth) | 143.65-144 FIXED MOBILE Space research (space-to-Earth) S5.207 S5.213 | FIXED MOBILE Space research (space-to-Earth) | | |
| 144-146 | | AMATEUR AMATEUR-SATELLITE S5.216 S5.120 | | AMATEUR AMATEUR-SATELLITE | |
| 146-148 FIXED MOBILE except aeronautical mobile (R) | 146-148 AMATEUR S5.217 | 146-148 AMATEUR FIXED MOBILE S5.217 | AMATEUR FIXED MOBILE | | |

Bangladesh

148-223 Mhz

| Read only | | | To be completed | |
|--|--|---|---|---------|
| Allocation to services | | | | |
| Region 1 | Region 2 | Region 3 | National Allocation | Remarks |
| 148-149.9 FIXED MOBILE except aeronautical mobile (R) MOBILE- SATELLITE (Earth-to-space) S5.209 S5.218 S5.219 S5.221 | 148-149.9 FIXED MOBILE MOBILE-SATELLITE (Earth-to-space) S5.209 S5.218 S5.219 S5.221 | FIXED MOBILE MOBILE- SATELLITE (Earth-to-space) | FIXED MOBILE MOBILE-SATELLITE (Earth-to-space) | |
| 149.9-150.05 | MOBILE-SATELLITE (Earth-to-space) S5.209 S5.224A RADIONAVIGATION-SATELLITE S5.224B S5.220 S5.222 S5.223 | | RADIONAVIGATION- SATELLITE MOBILE- SATELLITE | |
| 150.05-153 FIXED MOBILE except aeronautical mobile RADIO ASTRONOMY S5.149 | 150.05-156.7625 FIXED MOBILE | | FIXED MOBILE | |
| 153-154 FIXED MOBILE except aeronautical mobile (R) Meteorological Aids | | | | |
| 154-156.7625 FIXED MOBILE except aeronautical mobile (R) S5.226 S5.227 | | S5.225 S5.226 S5.227 | | |
| 156.7625-156.8375 | MARITIME MOBILE (distress and calling) S5.111 S5.226 | | MARITIME MOBILE (distress and calling) | |

Bangladesh

| | | | | |
|--|--|---|---------------------------------|--|
| 156.8375-174 FIXED MOBILE except aeronautical mobile S5.226 S5.229 | 156.8375-174 FIXED MOBILE S5.226 S5.230 S5.231 S5.232 | | FIXED MOBILE | |
| 174-223 BROADCASTING S5.235 S5.237 S5.243 | 174-216 BROADCASTING Fixed Mobile S5.234 | 174-223 FIXED MOBILE BROADCASTING S5.233 S5.238 S5.240 S5.245 | FIXED MOBILE BROADCASTING | |
| | 216-220 FIXED MARITIME MOBILE Radiolocation S5.241 S5.242 | | | |

220-335.4 MHz

| Read only | | | To be completed | |
|--|--|--|---|---------|
| Allocation to services | | | | |
| Region 1 | Region 2 | Region 3 | National Allocation | Remarks |
| | 220-225 | | | |
| 223-230 BROADCASTING Fixed Mobile S5.243 S5.246 S5.247 | AMATEUR FIXED MOBILE Radiolocation S5.241 | 223-230 FIXED MOBILE BROADCASTING | FIXED MOBILE BROADCASTING AERONAUTICAL RADIONAVIGATION Radiolocation | |
| | 225-235 FIXED MOBILE | AERONAUTICAL RADIONAVIGATION Radiolocation S5.250 | | |
| 230-235 FIXED MOBILE S5.247 S5.251 S5.252 | | 230-235 FIXED MOBILE AERONAUTICAL RADIONAVIGATION S5.250 | FIXED MOBILE AERONAUTICAL RADIONAVIGATION | |

Bangladesh

| | | | |
|--------------------|---|--|--|
| 235-267 | FIXED MOBILE S5.111 S5.199 S5.252 S5.254 S5.256 | FIXED MOBILE | |
| 267-272 | FIXED MOBILE Space operation (space-to-Earth) S5.254 S5.257 | FIXED MOBILE Space operation (space-to-Earth) | |
| 272-273 | SPACE OPERATION (space-to-Earth) FIXED MOBILE S5.254 | SPACE OPERATION (space-to-Earth) FIXED MOBILE | |
| 273-312 | FIXED MOBILE S5.254 | FIXED MOBILE | |
| 312-315 | FIXED MOBILE Mobile-satellite (Earth-to-space) S5.254 S5.255 | FIXED MOBILE | |
| 315-322 | FIXED MOBILE S5.254 | FIXED MOBILE | |
| 322-328.6 | FIXED MOBILE RADIO ASTRONOMY S5.149 | FIXED MOBILE RADIO ASTRONOMY | |
| 328.6-335.4 | AERONAUTICAL RADIONAVIGATION S5.258 S5.259 | AERONAUTICAL RADIONAVIGATION | |

335.4-410 MHz

| Read only | | | To be completed | |
|------------------------|---|----------|---------------------|---------|
| Allocation to services | | | | |
| Region 1 | Region 2 | Region 3 | National Allocation | Remarks |
| 335.4-387 | FIXED MOBILE S5.254 | | FIXED MOBILE | |
| 387-390 | FIXED MOBILE Mobile-satellite (space-to-Earth) S5.208A S5.254 S5.255 | | FIXED MOBILE | |

Bangladesh

| | | | |
|----------------------|---|--|--|
| 390-399.9 | FIXED MOBILE S5.254 | FIXED MOBILE | |
| 399.9-400.05 | MOBILE-SATELLITE (Earth-to-space) RADIONAVIGATION-SATELLITE S5.209 S5.224A S5.222 S5.224B S5.260 S5.220 | MOBILE-SATELLITE RADIONAVIGATION-SATELLITE | |
| 400.05-400.15 | STANDARD FREQUENCY AND TIME SIGNAL-SATELLITE (400.1 MHz) S5.261 S5.262 | STANDARD FREQUENCY AND TIME SIGNAL-SATELLITE (400.1 MHz) | |
| 400.15-401 | METEOROLOGICAL AIDS METEOROLOGICAL-SATELLITE (space- to-Earth) MOBILE-SATELLITE (space-to-Earth) S5.208A S5.209 SPACE RESEARCH (space-to-Earth) S5.263 Space operation (space-to-Earth) S5.262 S5.264 | METEOROLOGICAL AIDS METEOROLOGICAL-SATELLITE SPACE RESEARCH Space operation | |
| 401-402 | METEOROLOGICAL AIDS SPACE OPERATION (space-to-Earth) EARTH EXPLORATION-SATELLITE (Earth-to-space) METEOROLOGICAL-SATELLITE (Earth- to-space) Fixed Mobile except aeronautical mobile | METEOROLOGICAL AIDS SPACE OPERATION EARTH EXPLORATION-SATELLITE METEOROLOGICAL-SATELLITE Fixed Mobile except aeronautical mobile | |
| 402-403 | METEOROLOGICAL AIDS EARTH EXPLORATION-SATELLITE (Earth-to- space) METEOROLOGICAL-SATELLITE (Earth- to-space) Fixed Mobile except aeronautical mobile | METEOROLOGICAL AIDS EARTH EXPLORATION-SATELLITE METEOROLOGICAL -SATELLITE Fixed Mobile except aeronautical mobile | |
| 403-406 | METEOROLOGICAL AIDS Fixed Mobile except aeronautical mobile | METEOROLOGICAL AIDS Fixed Mobile except aeronautical mobile | |
| 406-406.1 | MOBILE-SATELLITE (Earth-to-space) S5.266 S5.267 | MOBILE-SATELLITE | |
| 406.1-410 | FIXED MOBILE except aeronautical mobile RADIO ASTRONOMY S5.149 | FIXED MOBILE except aeronautical mobile RADIO ASTRONOMY | |

Bangladesh

410-470 MHz

| Read only | | | To be completed | |
|--|---|--|---|---------|
| Allocation to services | | | | |
| Region 1 | Region 2 | Region 3 | National Allocation | Remarks |
| 410-420 | FIXED MOBILE except aeronautical mobile SPACE RESEARCH (space-to-space) S5.268 | | FIXED MOBILE except aeronautical mobile SPACE RESEARCH (space-to-space) | |
| 420-430 | FIXED MOBILE except aeronautical mobile Radiolocation S5.269 S5.270 S5.271 | | FIXED MOBILE except aeronautical mobile Radiolocation | |
| 430-440 AMATEUR RADIOLOCATION S5.138 S5.271 S5.272 S5.273 S5.274 S5.275 S5.276 S5.277 S5.280 S5.281 S5.282 S5.283 | 430-440 RADIOLOCATION Amateur S5.271 S5.276 S5.277 S5.278 S5.279 S5.281 S5.282 | | RADIOLOCATION FIXED MOBILE Amateur | |
| 440-450 | FIXED MOBILE except aeronautical mobile Radiolocation S5.269 S5.270 S5.271 S5.284 S5.285 S5.286 | | FIXED MOBILE except aeronautical mobile Radiolocation | |
| 450-455 | FIXED MOBILE S5.209 S5.271 S5.286 S5.286A S5.286B S5.286C S5.286D S5.286E | | FIXED MOBILE | |
| 455-456 FIXED MOBILE S5.209 S5.271 S5.286A S5.286B S5.286C S5.286E | 455-456 FIXED MOBILE MOBILE-SATELLITE (Earth-to-space) S5.286A S5.286B S5.286C S5.209 S5.271 | 455-456 FIXED MOBILE S5.209 S5.271 S5.286A S5.286B S5.286C S5.286E | FIXED MOBILE | |
| 456-459 | FIXED MOBILE S5.271 S5.287 S5.288 | | FIXED MOBILE | |

Bangladesh

| | | | | |
|---|---|---|-------------------------|--|
| <p>459-460 FIXED MOBILE</p> <p>S5.209 S5.271 S5.286A S5.286B S5.286C S5.286E</p> | <p>459-460 FIXED MOBILE MOBILE-SATELLITE (Earth-to-space)</p> <p>S5.286A S5.286B S5.286C S5.209 S5.271</p> | <p>459-460 FIXED MOBILE</p> <p>S5.209 S5.271 S5.286A S5.286B S5.286C S5.286E</p> | <p>FIXED MOBILE</p> | |
| <p>460-470</p> | <p>FIXED MOBILE Meteorological-Satellite (space-to-Earth) S5.287 S5.288 S5.289 S5.290</p> | <p>FIXED MOBILE Meteorological-Satellite (space-to-Earth)</p> | | |

Bangladesh

470-890 MHz

| Read only | | | To be completed | |
|---|--|--|--|---------|
| Allocation to services | | | | |
| Region 1 | Region 2 | Region 3 | National Allocation | Remarks |
| 470-790 BROADCASTING S5.149 S5.291A S5.294 S5.296 S5.300 S5.302 S5.304 S5.306 S5.311 S5.312 | 470-512 BROADCASTING Fixed Mobile S5.292 S5.293 | 470-585 FIXED MOBILE BROADCASTING S5.291 S5.298 | FIXED MOBILE BROADCASTING RADIONAVIGATION | |
| | 512-608 BROADCASTING S5.297 | | | |
| 790-862 FIXED BROADCASTING S5.312 S5.314 S5.315 S5.316 S5.319 S5.321 | 608-614 RADIO ASTRONOMY Mobile-satellite except aeronautical mobile-satellite (Earth-to-space) | 610-890 FIXED MOBILE BROADCASTING | | |
| | 614-806 BROADCASTING Fixed Mobile S5.293 S5.309 S5.311 | | | |
| | | S5.149 S5.305 S5.306 S5.307 S5.311 S5.320 | | |

Bangladesh

| | | | | |
|---|--|--|--|--|
| | | | FIXED MOBILE BROADCASTING RADIONAVIGATION | |
| | | | FIXED MOBILE BROADCASTING | |
| 862-890 FIXED MOBILE except aeronautical mobile BROADCASTING S5.322 S5.319 S5.323 | | | | |

Bangladesh

890-1 350 MHz

| Read only | | | To be completed | |
|---|---|--|--|---------|
| Allocation to services | | | | |
| Region 1 | Region 2 | Region 3 | National Allocation | Remarks |
| 890-942 FIXED MOBILE except aeronautical mobile BROADCASTING S5.322 Radiolocation S5.323 | 890-902 FIXED MOBILE except aeronautical mobile Radiolocation S5.318 S5.325 | 890-942 FIXED MOBILE BROADCASTING Radiolocation S5.327 | FIXED MOBILE BROADCASTING Radiolocation | |
| | 902-928 FIXED Amateur Mobile except aeronautical mobile Radiolocation S5.150 S5.325 S5.326 | | | |
| | 928-942 FIXED MOBILE except aeronautical mobile Radiolocation S5.325 | | | |
| 942-960 FIXED MOBILE except aeronautical mobile BROADCASTING S5.322 S5.323 | 942-960 FIXED MOBILE | 942-960 FIXED MOBILE BROADCASTING S5.320 | FIXED MOBILE BROADCASTING | |

QUESTIONNAIRE – PART II

(To be completed by Administrations only)

Describe succinctly the problems that your administration is currently experiencing in national spectrum management (for example subject areas in national spectrum management)

Country **BANGLADESH**

Focal point **DIVISIONAL ENGINEER (Frequency and wireless)**

The following general questions on national spectrum management are based in part on the functional requirements of spectrum management described in the handbook on “National Spectrum Management”. If you need additional space to answer the questions please continue on a separate sheet of paper

1. Do you have a national law governing spectrum management? YES NO
- Last date this law was changed or modified? **1933**
- Are any actions planned to change this law? YES NO

Have any problems been identified? and if so, do you need any assistance from the ITU in solving them?

A project is going on to establish a telecommunication regulatory body under Ministry of Post and Telecommunication where spectrum management is also included

2. Have you published regulations and procedures for national spectrum management (e.g. radio services, license requirements etc.)? YES NO

Have any problems been identified? and if so, do you need any assistance from the ITU in solving them?

Expert service and advise from ITU in this regard will be helpful for us.

3. Do you have a national radio frequency spectrum allocation table? YES NO

Have any problems been identified? and if so, do you need any assistance from the ITU in solving them?

We are trying to develop a national radio frequency spectrum allocation table and it will be very helpful to get expert service and also advise from ITU.

4. Do you have technical specifications for national spectrum use? YES NO
- Have any problems been identified? and if so, do you need any assistance from the ITU in solving them?

We follow the ITU standard specification

5. Do you have a need for any spectrum redeployment*? YES NO

* The term “redemption” is used here to refer to a process of national scope in which an assessment is conducted

- 1) to determine if portions of spectrum can be identified that are in limited use; and
- 2) to determine if such spectrum segments can be reallocated for use in delivering radiocommunication services that have expanding spectrum requirements.

- If so, do you have a strategy for achieving this redeployment in respective frequency bands and for given radiocommunication services?
- Please define the established strategy and describe the nature of the consultation, if any, with users regarding the potential costs resulting from the planned redeployment.

YES NO

6. What is the total cost of national spectrum management functions performed by your Government (expressed in Swiss francs)? **1800.00 swis francs(appx.)**
- What is the source of the funding required to accomplish these spectrum management functions?

The expenditure of the office comes from revenue budget of Bangladesh government.

7. Do you have a method for establishing spectrum users’ fees? YES NO
- If so, please give a brief description of the method used in establishing those fees.

8. Do you maintain centralized databases for spectrum management? YES NO
- What is the approximate size of your database (expressed in number of records)? **5000**

- Do you have a computerized data base management system (DBMS)?
- What DBMS system do you use?
- Are these frequency assignment records available to public?

YES NO

WinBASMS

YES NO

Have any problems been identified? and if so, do you need any assistance from the ITU in solving them?

WinBASMS has limitation on date and range of frequency to be registered.

9. Do you notify frequency assignments to the ITU? YES NO

Have any problems been identified? and if so, do you need any assistance from the ITU in solving them?

Need expert service from ITU in this regard.

10. Do you have a policy and planning function for national spectrum management (i.e. a national strategy for future use of the spectrum)? YES NO

Have any problems been identified? and if so, do you need any assistance from the ITU in solving them?

We need to develop a policy and planning function for national spectrum management.

11. Do you perform technical analyses of frequency assignment requests? YES NO

Have any problems been identified? and if so, do you need any assistance from the ITU in solving them?

Some times we do the job. But due to lack of adequate knowledge we can not always analyze frequency assignment requests. In this regard ITU's help is being solicited.

12. Do you perform radio monitoring? YES NO

- number of fixed monitoring stations
- facilities available at fixed monitoring stations
 - monitoring up to ____ MHz
 - direction finding up to ____ MHz
- number of mobile monitoring stations
- facilities available at mobile monitoring stations
- monitoring up to ____ MHz
- direction finding up to ____ MHz

Have any problems been identified? and if so, do you need any assistance from the ITU in solving them?

The Ministry of Post and Telecommunication is processing to procure monitoring equipment under world bank's assistance.

13. Do you perform technical analyses of radio frequency interference complaints? YES NO

- established consultation process, involving Government and non-government organization, for resolving these complaints? YES NO

Have any problems been identified? and if so, do you need any assistance from the ITU in solving them?

We need expert service and advise from ITU.

14. What computers and operating systems are in use for national spectrum management?
- Type of computers **Pentium II**
Operating system(s) **Windows 98**
- Have any problems been identified? and if so, do you need any assistance from the ITU in solving them?
15. Number of technical/professional staff in national spectrum management? **5**
16. Number of support staff in national spectrum management? **4**
17. Describe your country's spectrum management structure (Please enclose a copy of organization chart).

Enclosed

18. Do you use the ITU-R Handbooks and Reports on:
- a) National Spectrum Management, version 1995? **NO**
 - b) Spectrum Monitoring¹, version 1995? **NO**
 - c) Computer-aided Techniques for Spectrum Management, version 1999? **NO**
 - d) HF Broadcasting System Design, version 1999? **NO**
 - e) Report SM.2012, Economic Aspects of Spectrum Management, version 1997²? **NO**
 - f) Windows Basic Automated Spectrum Management System (WinBASMS) Software Version 1997, Manual Version 1997 **YES**

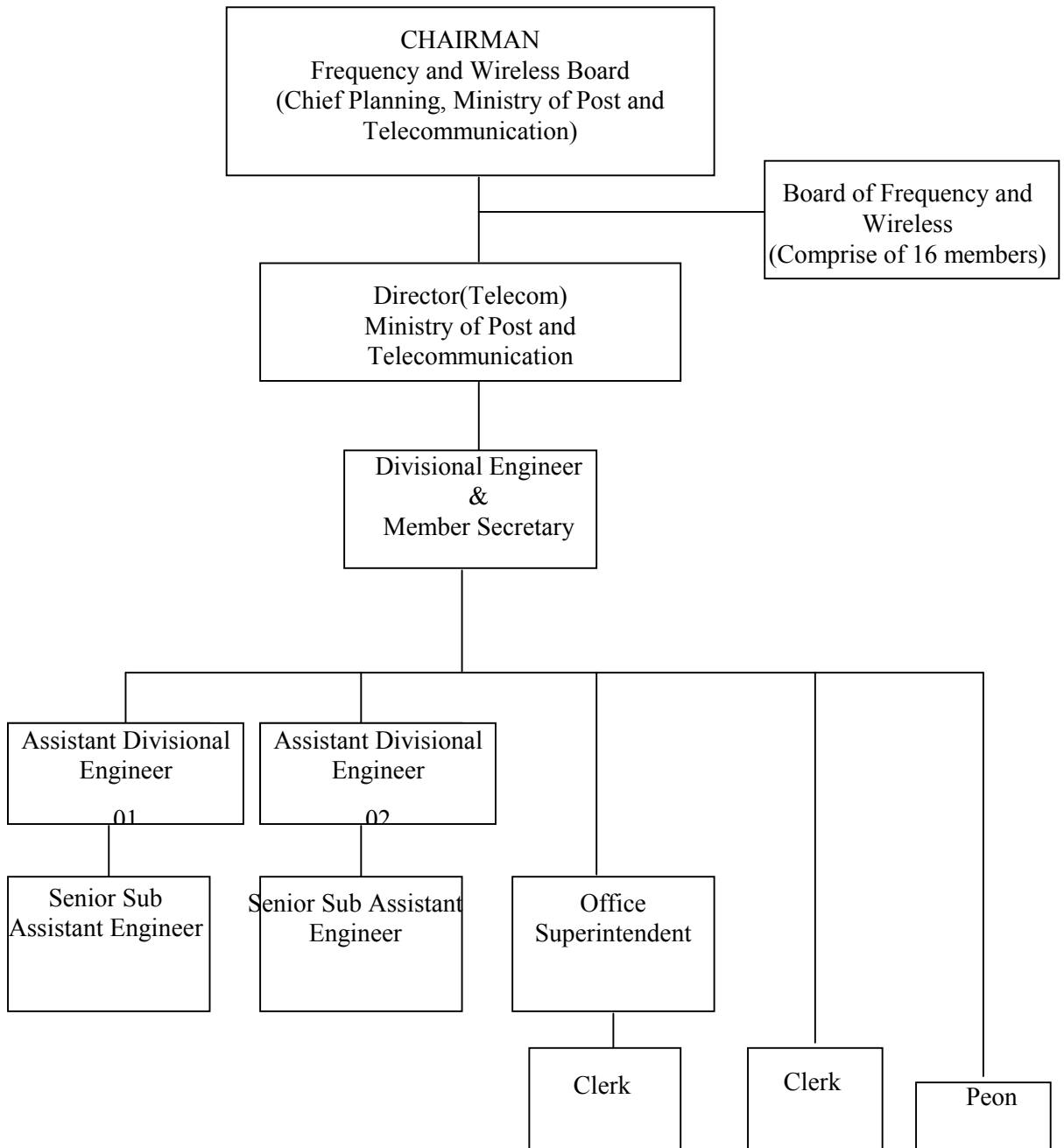
What additional information/handbooks do you need from the ITU?

We need all of the above useful and important documents either in paper form or in CDROM and also a TIES account from ITU . Also National Broadcasting Authority expressed their requirement for HF Broadcasting System Design, version 1999

¹ The Spectrum Monitoring Handbook is currently being updated, therefore, you are urged to contact Mr Jan Verduijn (NL), the designated Rapporteur from ITU-R Study Group 1, Working Party 1C if you have any comments that you wish included in a future version of this Handbook.

² This Report SM.2012 was updated during the ITU-R Study Group 1 meeting in August 1999. This new version is expected to be available in the three working languages by January 2000.

The organization chart is given below.



*To be returned no later than 31 January 2000 to:
ITU-D Study Groups Secretariat
Telecommunication Development Bureau
Fax: +41 22 730 54 84
E-Mail: devsg1@itu.int*

THANK YOU FOR YOUR COOPERATION

