



Telecommunication  
Regulatory Body  
of Indonesia

# Id-SIRT

## Indonesia Security Incidents Response Team on Internet Infrastructure

Gunawan Hutagalung, MT  
Head of Tariff and Interconnect Section  
Directorate Telecommunications – DG Postel  
Telecommunication Regulatory Body of Indonesia  
Email : [hutagalung@postel.go.id](mailto:hutagalung@postel.go.id)

## Cyber Crime Cases in Indonesia

decreasing national competitive advantage

## Vulnerabilities on Critical Infrastructure

threats on national security and people's life

## Slow Adoption on Internet Usage

loss opportunities on economic growth

## Absence of Strong Internet Security System

tendency of hindering internet-based activities

## Challenge on Law Enforcement Practices

increasing numerous attacks on internet infrastructure

## Notorious International Perception

negative image on the nation and society

**MASTEL** Masyarakat Telematika Indonesia  
*Indonesian Telematics Society*

**APJII** Asosiasi Penyelenggara Jasa Internet Indonesia  
*Indonesian ISP Association*

**AWARI** Asosiasi Warung Internet Indonesia  
*Indonesian Internet Cafe Association*

**POLRI** Kepolisian Republik Indonesia  
*Indonesian Police Office*

**KEJAGUNG** Kejaksaan Agung  
*Indonesian Attorney General Office*

**DITJEN POSTEL** Direktorat Jenderal Pos dan Telekomunikasi  
*DG Postel Indonesia*

## **National Constitution Act UU No.36/1999**

**regarding National Telecommunication Industry**

## **Government Regulation PP No.52/2000**

**regarding Telecommunication Practices**

## **ICT Ministry Decree PERMEN No.26/PER/M.KOMINFO/2007**

**regarding Indonesian Security Incident Response Team on Internet Infrastructure**

## **National Constitution Act UU No.11/2008**

**regarding Electronic Information and Transaction**

## **Independent Entity Representing Related Stakeholders**

PROFESSIONAL - EXPERTS - POLICE - ATTORNEY - GOVERNMENT - ACADEMICIAN - RESEARCHER - PRACTITIONER

## **Triple Board Governance System**

ADVISORY BOARD - EXECUTIVE BOARD - INSPECTION BOARD

## **Lead National Scale Initiatives**

INTERNET SERVICE PROVIDERS AND RELATED PARTIES

## **Develop International Collaboration and Cooperation**

INSTITUTION AND NATION BASED RESPONSE TEAMS AND OTHER RELATED BODIES

**establishing  
CONDUCTIVE and SECURE  
internet environment  
for Indonesia**

**to EXPEDITE internet growth through**

**PROMOTING security awareness**

**MONITORING incident potentials**

**SUPPORTING law enforcement**

**PROVIDING technical assistance**

**EDUCATE** stakeholders on security management

**MONITOR** traffic, **DETECT** incidents, and **DELIVER** early warning

**GATHER**, **ORGANISE**, **STORE**, and **MANAGE** log files

**RESPONSE** to stakeholders enquiries on internet security

**DEVELOP** simulation laboratories and training centres

**PROVIDE** technical advisory and consultancy

**CONDUCT** international collaborations and co-operations



**Do not record or evaluate CONTENT**

**implementation of and protected by INDIVIDUAL PRIVACY ACT  
UU No.36/1999 Article 40 on “Illegal Interception”**

**only monitor TRAFFIC PATTERNS and manage LOG FILES  
to detect threats and to support law enforcement**

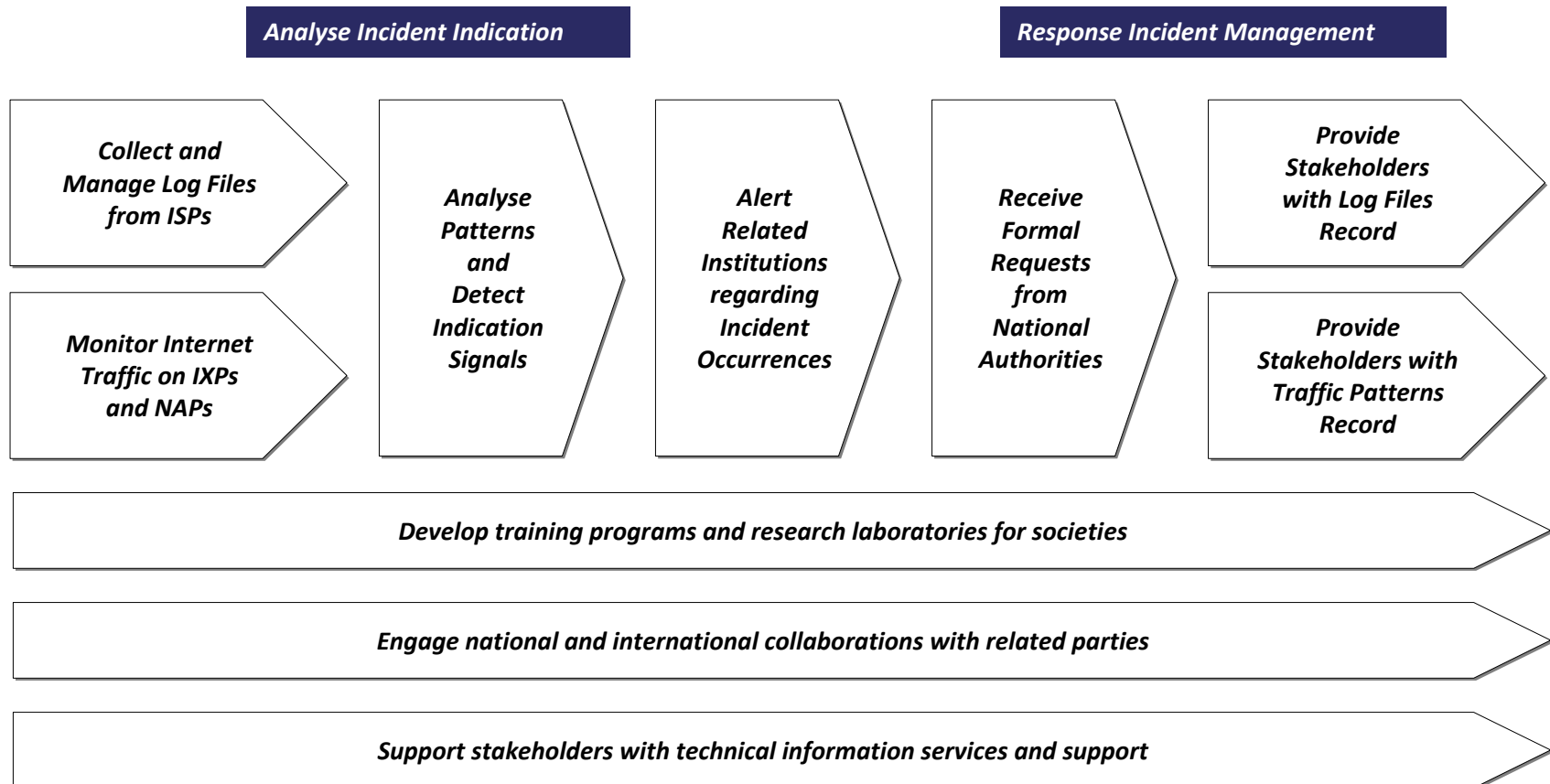
**Internet ●  
Traffic Behaviors**

**●  
Source, Destination, Protocol,  
Port, Time Stamp**

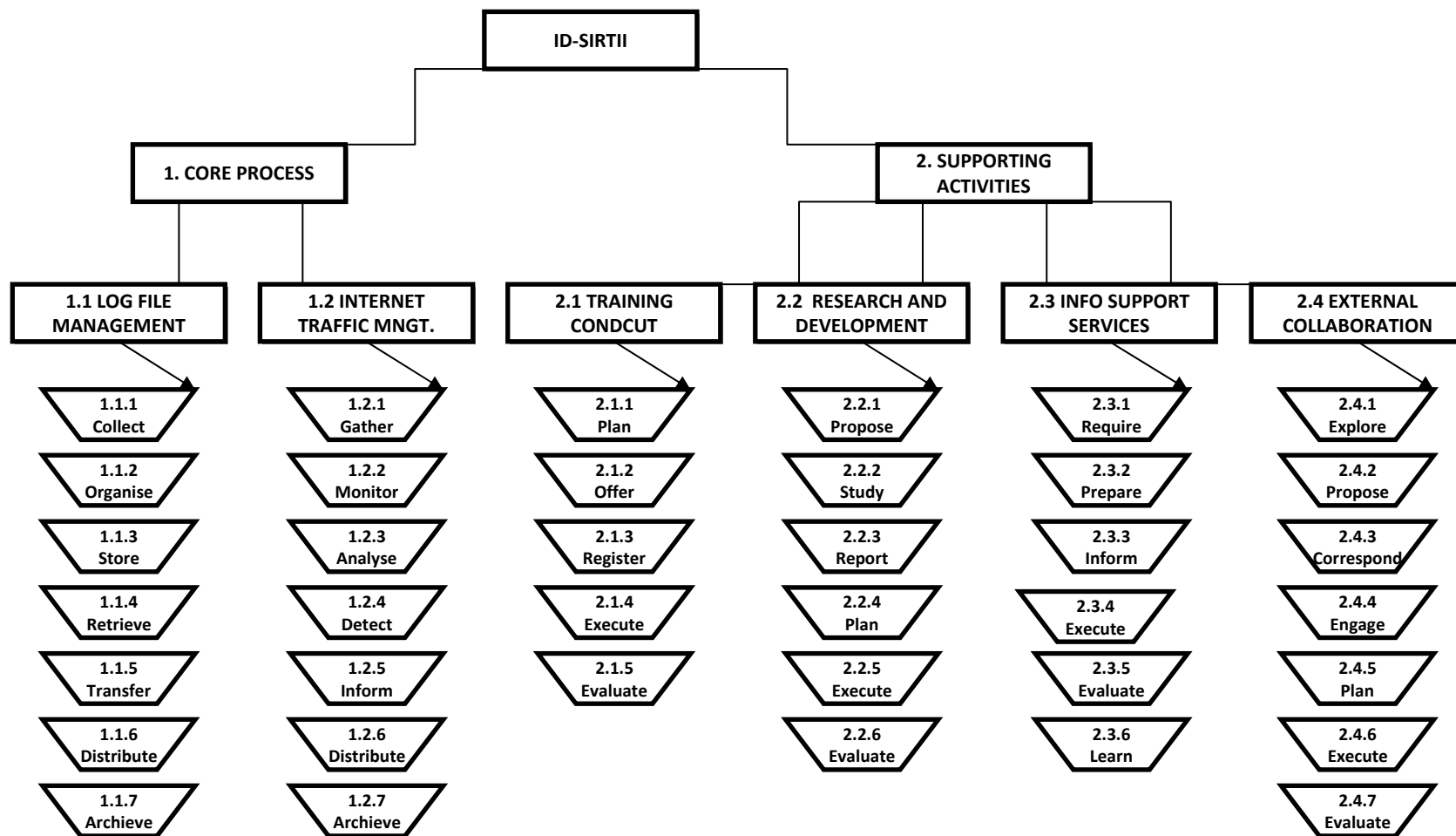
# The mechanism



Telecommunication  
Regulatory Body of  
Indonesia



# The process taxonomy



## **Operator - NAP - IXP - ISP**

obligation to record logs and to monitor traffic  
stated in the contract with customers

## **Close User Group network**

obligation to record logs and users identity

## **Hot Spot and Internet Cafe**

obligation to record users identity

## Operator - NAP - IXP - ISP

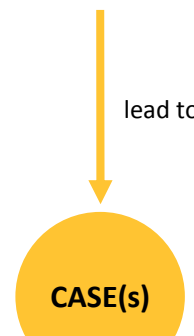
administrative sanctions (from warning to license revocation)

## Close User Group network

based on the contract agreement

## Hot Spot and Internet Cafe

IP address block



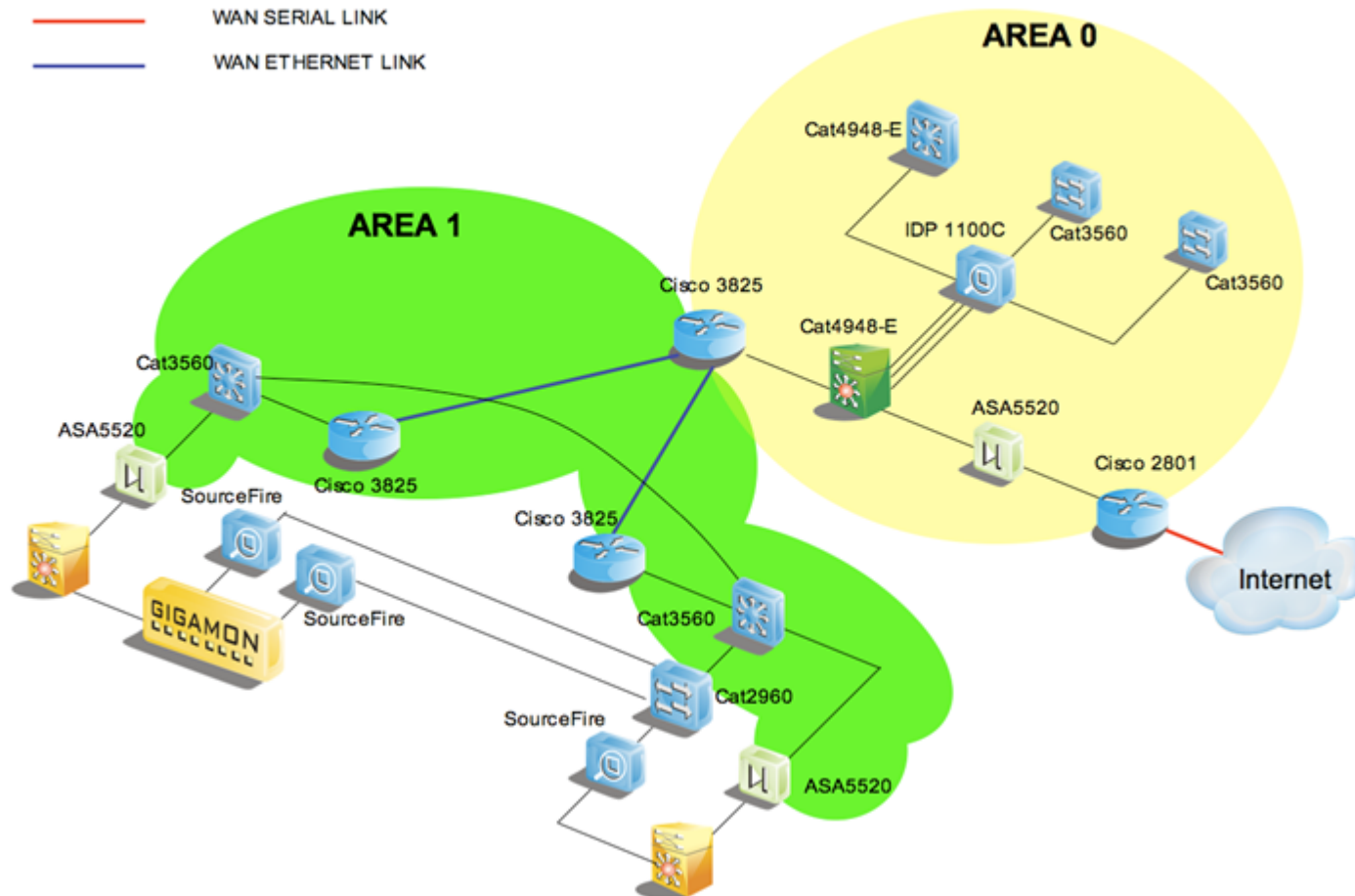
Legal and Law Enforcement

# The topology



## LEGEND

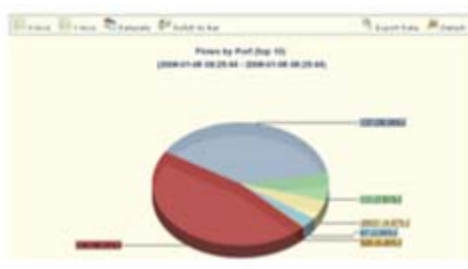
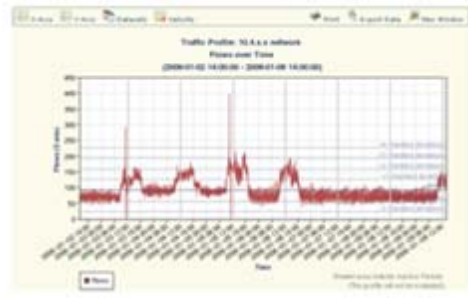
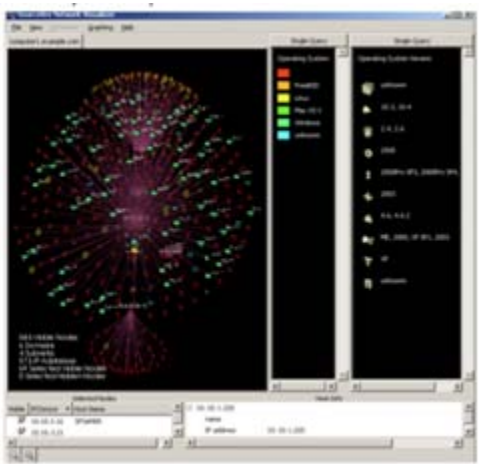
- LAN COOPER UTP LINK
- WAN SERIAL LINK
- WAN ETHERNET LINK



# The tools



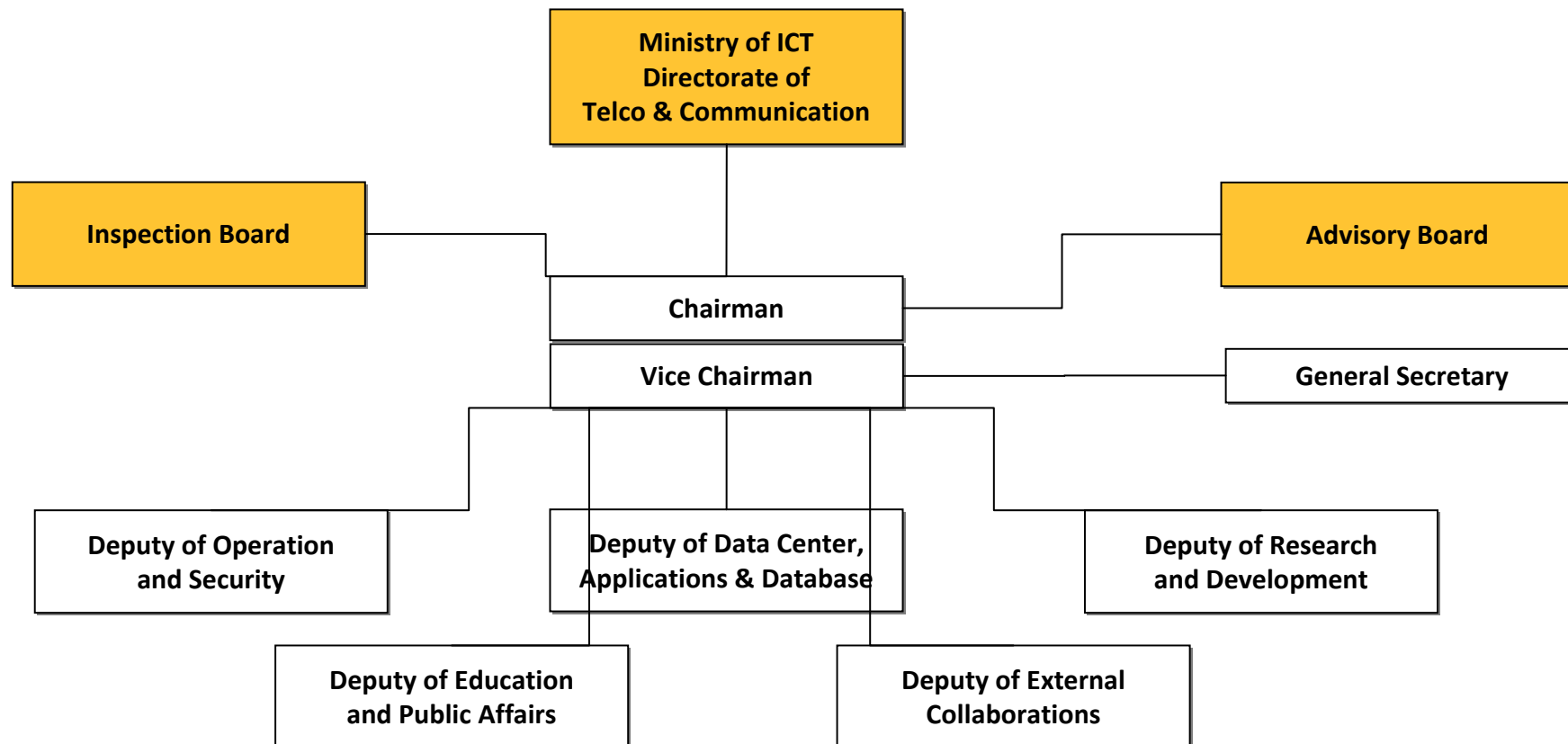
Telecommunication  
Regulatory Body of  
Indonesia



# The organization



Telecommunication  
Regulatory Body of  
Indonesia

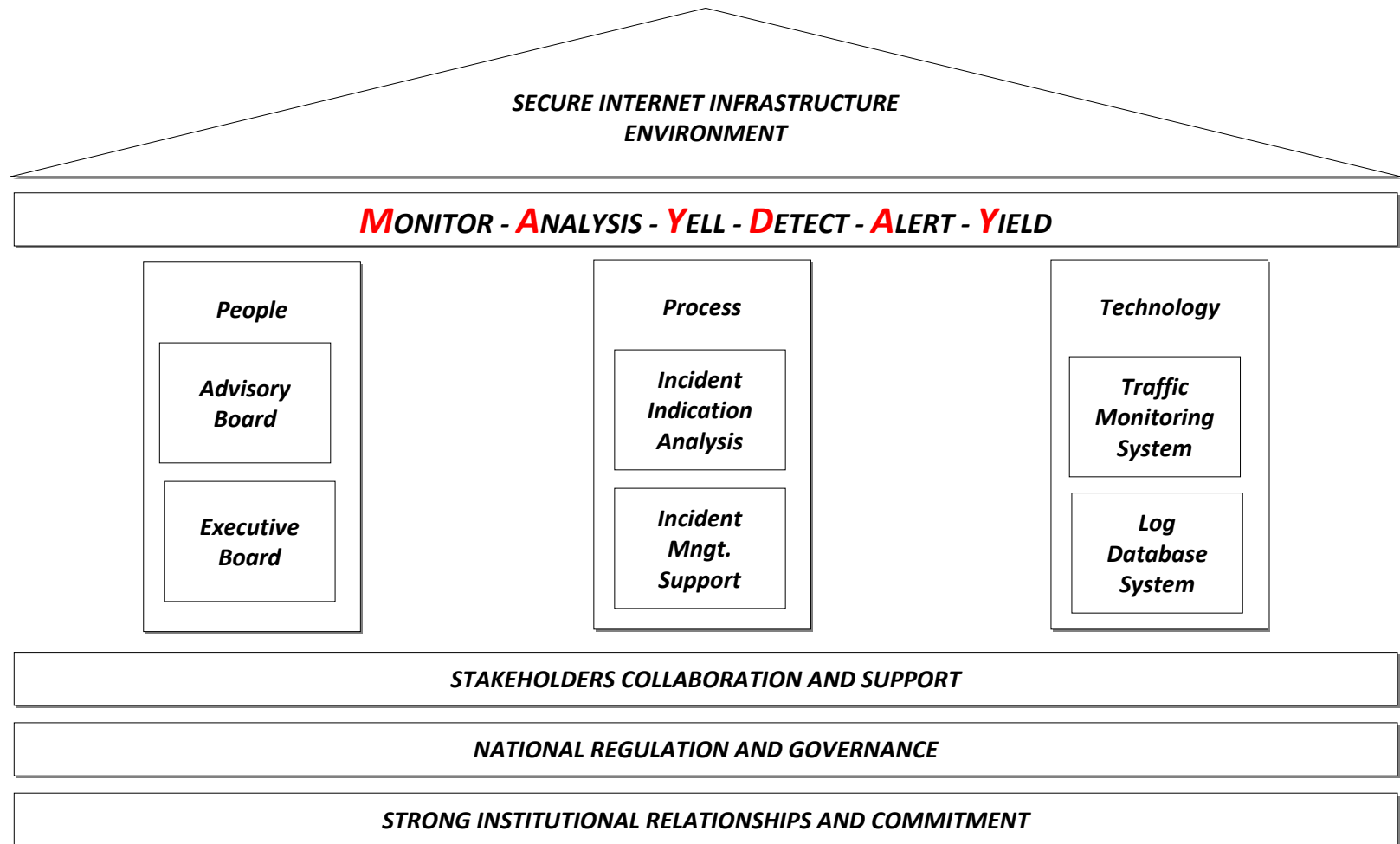




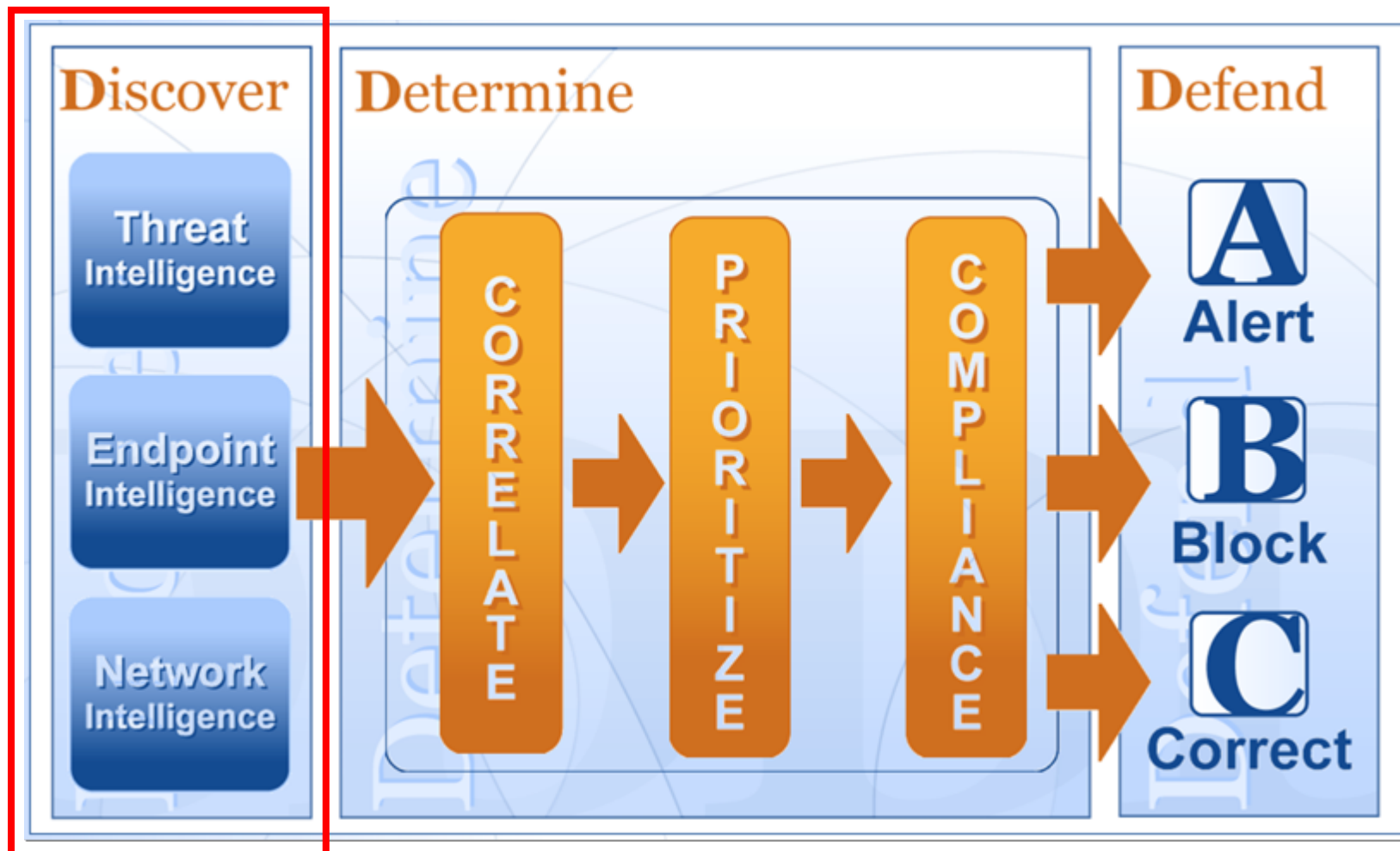
# The holistic view



Telecommunication  
Regulatory Body of  
Indonesia



# The mitigation view





Telecommunication  
Regulatory Body  
of Indonesia

# Thank You.

Terima kasih!

