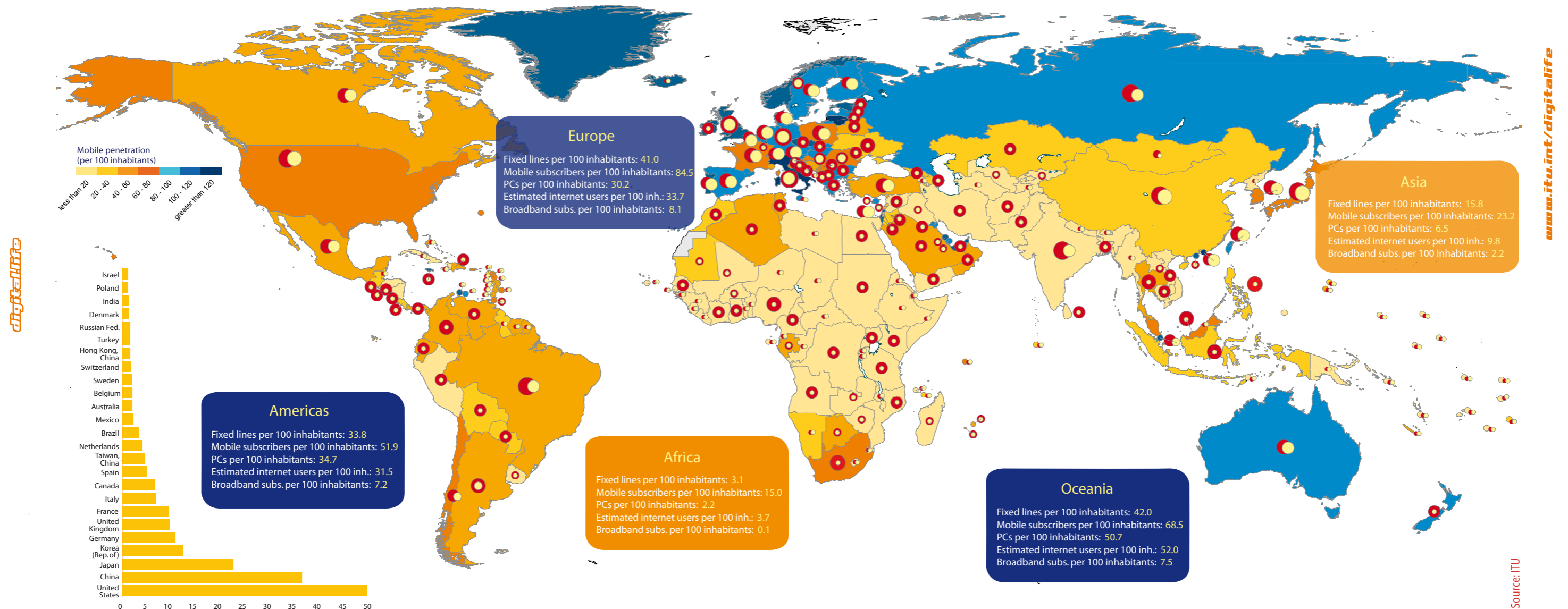


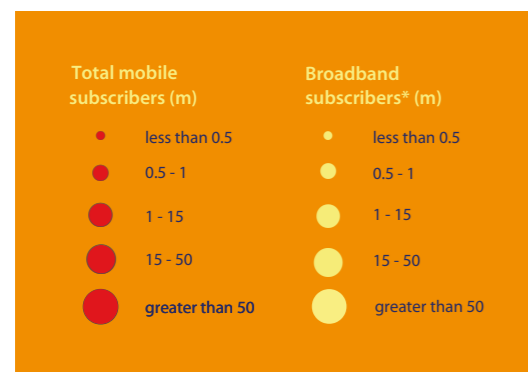
Information Society Statistics Map 2005



Broadband subscribers* (m)
Top 25 economies, December 2005

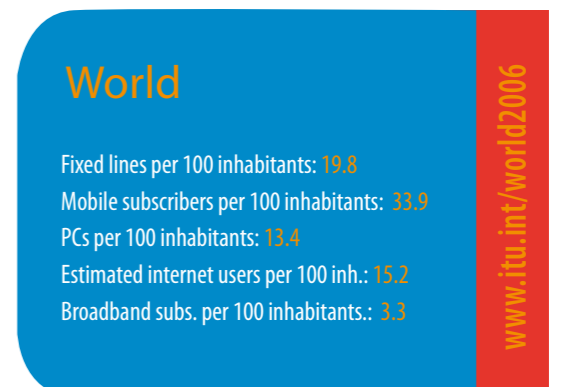
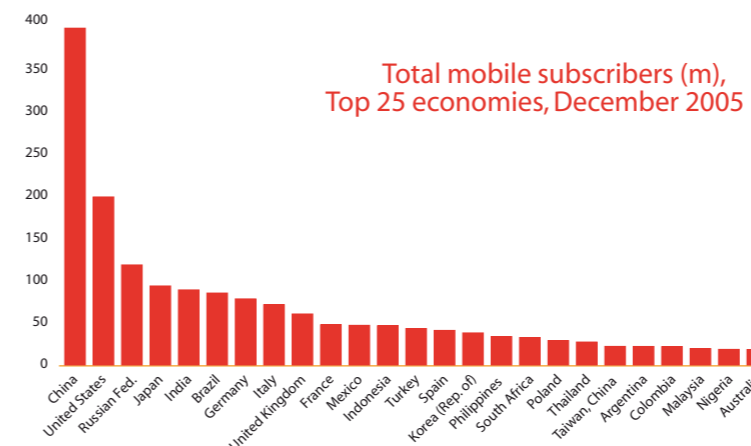
*Broadband subscribers refers to services equal to or greater than 256 kbit/s in one or both directions, but the total does not include 3G with mobile internet access.

The designations employed and the presentation of material in this map do not imply any opinion whatsoever on the part of ITU concerning the legal or other status of any country, territory or area or any endorsement or acceptance of any boundary.



This map of digital opportunity worldwide has been produced on the basis of data in the ITU Information Society Statistics database.

The five indicators highlighted in the map are measures of the penetration of information and communication technologies (ICTs) worldwide. ITU works with other partners in the inter-agency *Partnership for Measuring ICT Development* in defining a core set of indicators that can be used for measuring progress in bridging the digital divide and implementing the outcomes of the World Summit on the Information Society (WSIS).



For more information, see ITU's World Information Society Report 2006 (www.itu.int/wisr) and the ITU Information Society Statistics Database (www.itu.int/ict).