

HBB



all

Connected TV Accessibility

Smart Access Services for Connected TV

Pilar Orero

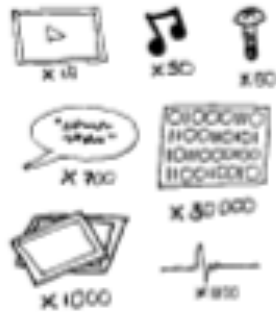
29 May 2015

<p>2 Academic Institutions</p>	 UAB Universitat Autònoma de Barcelona  caiac 
<p>4 Public Broadcasters</p>	 rbb ¹ RUNDFUNK BERLIN-BRANDENBURG  RTP RADIOTELEVISÃO PORTUGUESA  3 TELEVISIÓ DE CATALUNYA  SWISS TXT
<p>2 Research Institutes</p>	 Institut für Rundfunktechnik  IKT  vicomtech IK4 ● Research Alliance
<p>4 SMEs</p>	 vsonix  PEOPLE'S PLAYGROUND  SCREEN SYSTEMS  Holken Consultants & Partners



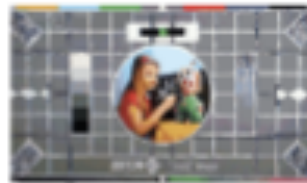
TRADITIONAL BROADCASTING

1



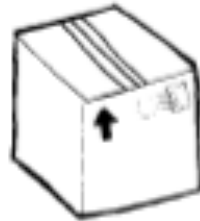
The programme is made in the traditional way.

2



The programme is turned into a piece of linear media.

3



This is broadcast to everyone.

4

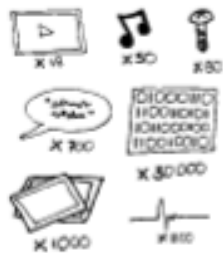


The same content is played back on all devices, resulting in compromises on some devices.



OBJECT BASED BROADCASTING

1



The programme is made in the traditional way.

2



The programme is turned into a collection of media objects along with some metadata to describe how it should be assembled. All of this data is broadcast to everyone.

3



The device inside the viewer's home re-assembles the media objects according to the metadata.

4



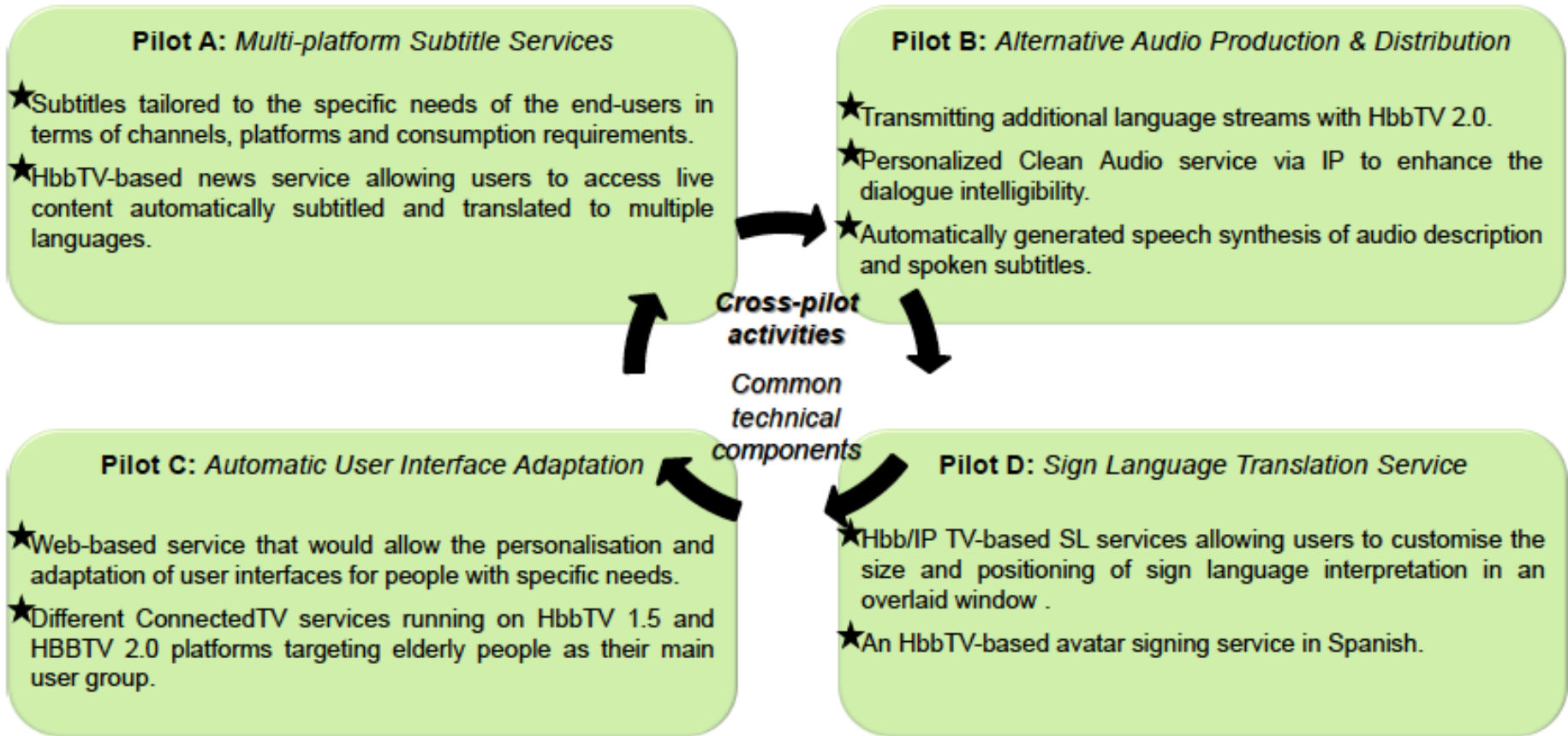
The objects can be assembled differently (based on the original metadata). Optimising the experience depending on local factors relating to the device, environment and viewer.



- Subtitling/Captioning
- Audio description
- Spoken subtitles
- Sign language → avatars
- Clean Audio
- Clean audio + audio description

- Technology access in general: user interaction

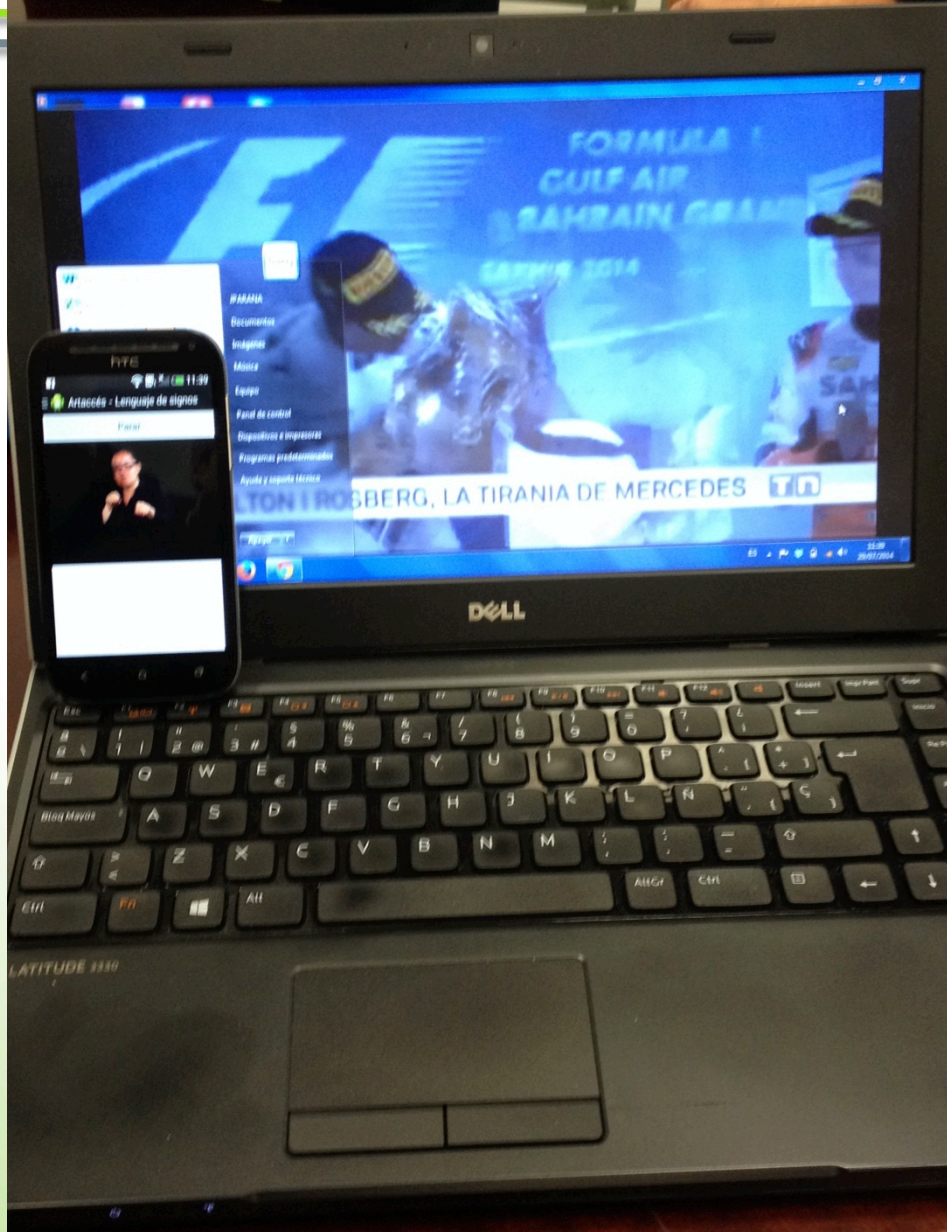
Pilots & their relationship





Multilanguage/simultaneous





HBB4ALL year 1

