



Join Today!

Help us shape
the future of ICTs worldwide.

For more information on how to join Study Group 1

contact the ITU-D Study Groups Secretariat at

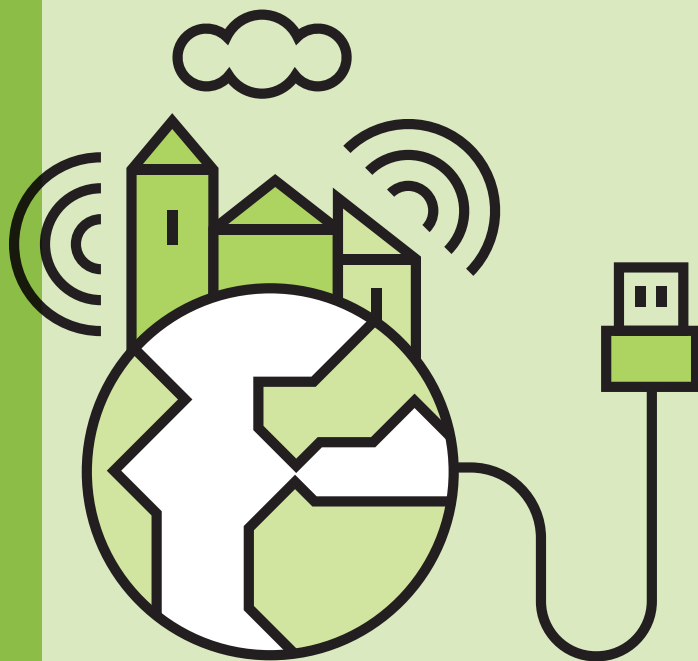
devsg@itu.int

+41 22 730 5999

www.itu.int/itu-d/study-groups



www.itu.int



ITU-D Study Group 1

**Enabling environment
for the development of
telecommunications/ICTs**





ITU-D Study Groups provide an opportunity for the Membership to share experiences, present ideas, exchange views, and achieve consensus on appropriate strategies to address telecommunication/ICT priorities.

ITU-D Study Groups focus specifically on those issues which are of priority to developing countries to support them in achieving their development goals.

Global Scope

- ITU-D Study Groups are responsible for developing Reports, Guidelines, and Recommendations based on input received from the Membership and facilitate the implementation of telecommunication/ICT policies, strategies, projects and initiatives for all Members.
- ITU-D Study Groups focus specifically on those issues which are of priority to developing countries to support them in achieving their development goals.
- Specifically, **ITU-D Study Group 1** focuses on matters related to national telecommunication/ ICT policy, regulatory, technical, and strategy development which best enables countries to benefit from the impetus of telecommunications/ ICTs as an engine for sustainable growth.
- Study Group 1 works on areas which contribute to providing an **enabling environment for the development of telecommunications/ICTs**, such as policies and access technologies for broadband, cloud computing, accessibility for persons with disabilities and specific needs, and consumer protection.

Connect With Your Peers

- ITU-D Study Groups provide an opportunity for the Membership to share experiences, present ideas, exchange views, and achieve consensus on appropriate strategies to address telecommunication/ICT priorities.
- Sharing on topics of common interest is carried out through face-to-face meetings, online collaborative sites, case studies, and remote participation in an atmosphere that encourages **open debate** and **exchange of information** and for receiving **input from experts** on the topics under study.
- The information gathered and analysed serves to strengthen the shared knowledge base of the Membership. The Study Groups receive inputs through surveys, contributions and case studies which are then made available for easy access by the Membership using content management and web publication tools.