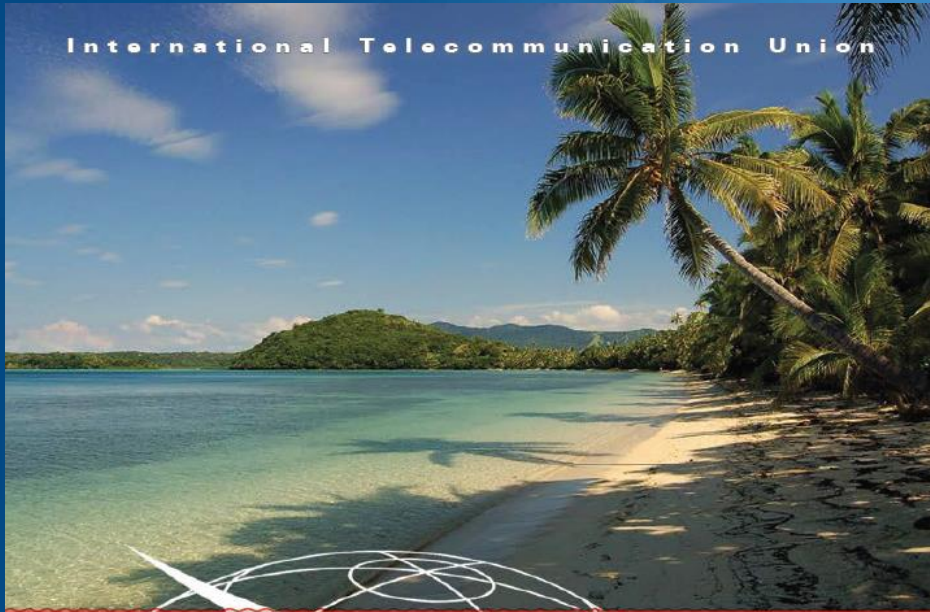


International Telecommunication Union



REGIONAL  
RADIOCOMMUNICATION  
SEMINAR FOR ASIA-PACIFIC 2013

**Nadi, Fiji**  
**28 October - 1 November 2013**

[www.itu.int/go/ITU-R/seminars](http://www.itu.int/go/ITU-R/seminars)

Organised by:



Photo credit: Pfy, DC

# BR IFIC

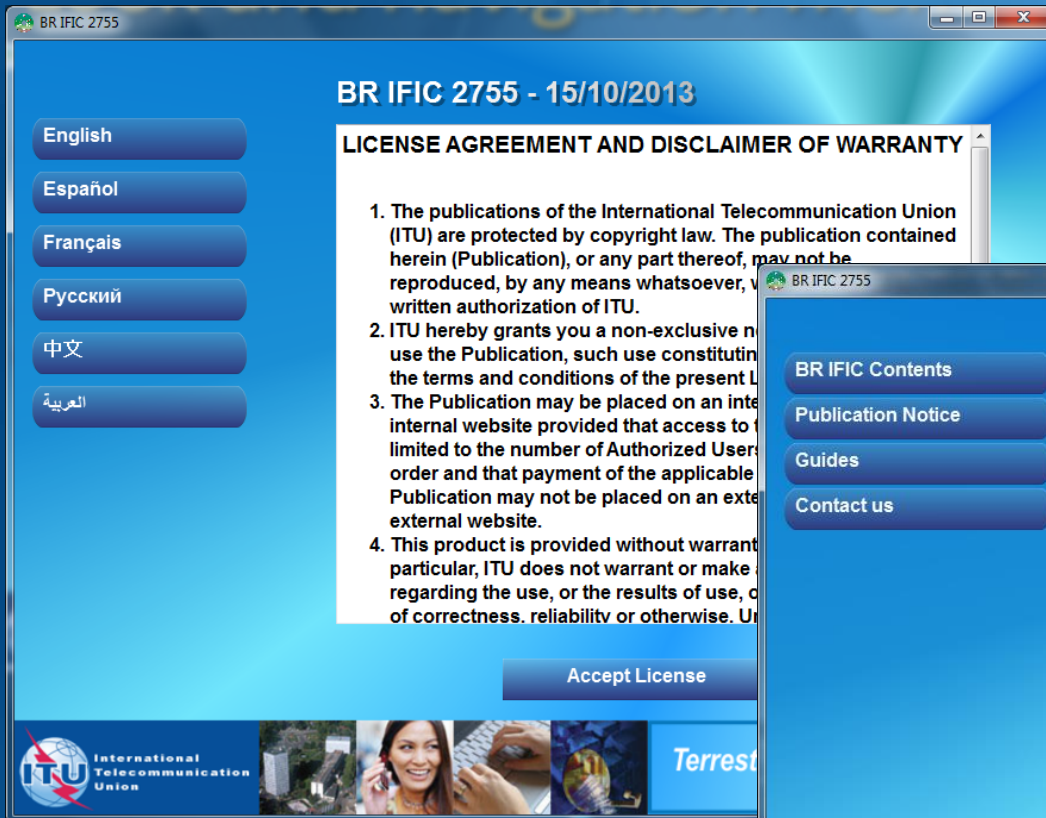
(Terrestrial Services)



# Introduction

- The purpose of the BR International Frequency information Circular (BR IFIC) is to provide information on the frequency assignments/allotments submitted by administrations to the BR for recording in the Master International Frequency Register and Plans.
- The BR IFIC is published once every two weeks by the BR, pursuant to Article 20 (provisions Nos. 20.1 to 20.6 and 20.15) of the Radio Regulations (RR).
- The BR IFIC is issued in Arabic, Chinese, English, French, Russian and Spanish.
- Due to the large volume of data, the BR IFIC is published in two parts: Terrestrial Services and Space Services.

# Look and navigation menu



# Contents of the BR IFIC

- Latest publication: Parts I, II, III, eventually IIB and Special Sections;
- Master International Frequency Register (MIFR);
- Plans for terrestrial services;
- Notices in process;
- Frequencies prescribed for common use;
- TerRaQ, TerRaNV and TerRaNotices software and some other utilities;
- The Preface to BR IFIC in Arabic, Chinese, English, French, Russian and Spanish;
- General information (ReadMe).

# Software

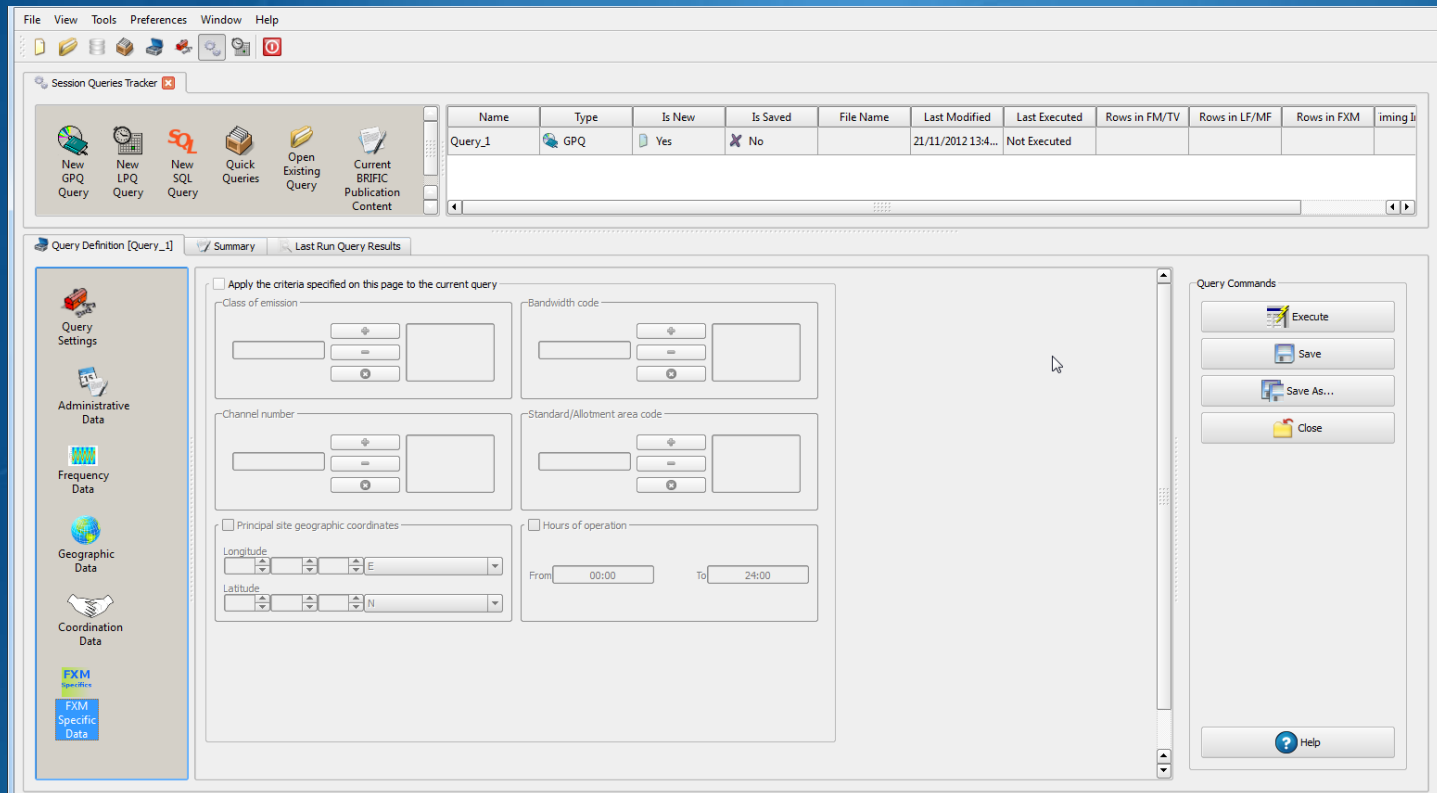
- TerRaQ: Software for querying the BR IFIC database:
  - Parts I, II, III or IIB and the Special Sections (Parts A, B and C);
  - Frequency assignments/allotments recorded in the Master Register and in the various plans, as well as notices currently being processed;
  - Specific queries (National extract, etc.).
- TerRaNV
  - Software for checking the electronic notices;
  - Complete validation is performed by the BR.
- TerRaNotices
  - Creation and validation of electronic notices;
  - Incorporates the same validations as TerRaNV.
- BR IFIC DB Manager
  - It is now possible to have different releases of the BR IFIC databases installed on one PC and choose the desired one
- Terrestrial BR IFIC Format Converter
  - Convert BR IFIC database file from SQLite to MS Access® and vice versa

# TerRaQ: to consult BR IFIC

- General Purpose Query (GPQ)
- Latest Publications Query (LPQ)
- Quick Queries
- SQL Query
- Existing Query
- Current BR IFIC Publication Content

# General Purpose Query (GPQ)

GPQ is used to consult Master Register, Plans and Notices being processed.



# Latest Publications Query (LPQ)

LPQ is used to consult only the current BR IFIC publication

The screenshot displays the 'Session Queries Tracker' application. At the top, a menu bar includes 'File', 'View', 'Tools', 'Preferences', 'Window', and 'Help'. Below the menu is a toolbar with icons for file operations. A 'Session Queries Tracker' window shows a table of queries:

Name	Type	Is New	Is Saved	File Name	Last Modified	Last Executed	Rows in FM/TV	Rows in LF/MF	Rows in FXM	iming Inofr
Query_1	GPQ	Yes	No		06/09/2012 10:1...	Not Executed				
Query_2	LPQ	Yes	No		06/09/2012 10:2...	Not Executed				

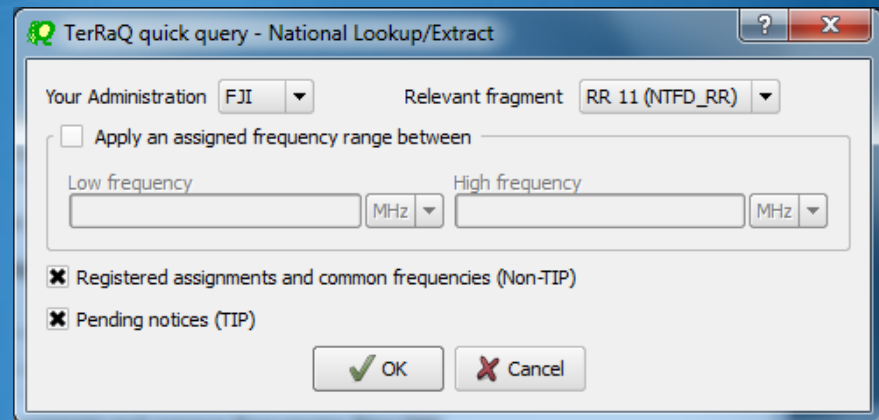
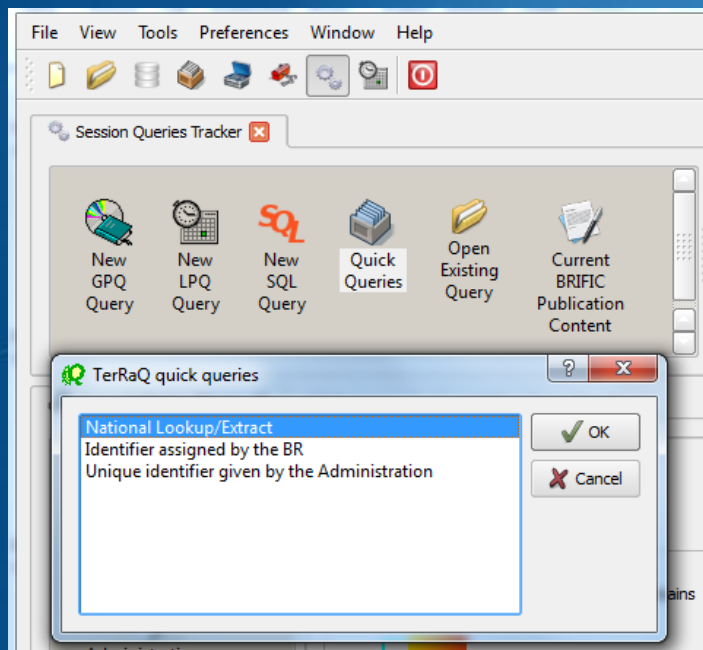
Below the table, the 'Query Definition [Query\_2]' window is open, showing the 'Summary' tab. The 'Assigned Frequency' section contains the text: 'In this query, select notices where the assigned frequency (f) satisfies the following frequency conditions'. Underneath, there are several frequency condition icons:  $f=f1$ ,  $f < f1$ ,  $f1 <= f$ ,  $f1 < f$ ,  $f <= f1$ ,  $f1 < f$ ,  $f1 <= f <= f2$ ,  $f1 < f < f2$ ,  $f <= f1$  OR  $f2 <= f$ , and  $f < f1$  OR  $f2 < f$ . Below these icons are two input fields for frequency values in MHz. A red box highlights the text 'Active criteria Invalid'. At the bottom, there are buttons for '+', '-', and 'x', and a 'Selected criteriae' section with a large empty box.



# Quick Queries (1/3)

- National Lookup/Extract

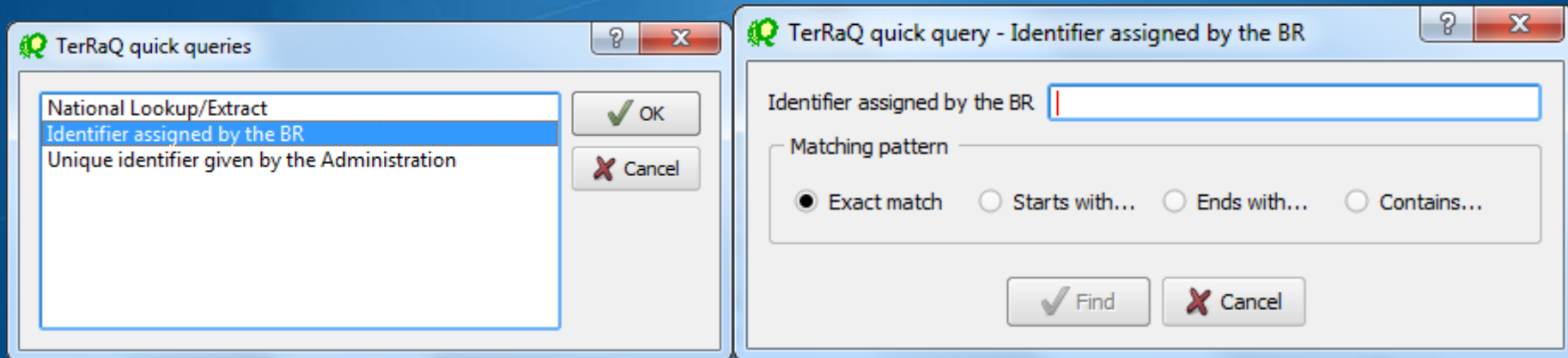
This query might be used to retrieve all (or by a frequency filter) the pending notices and/or the assignments recorded in the MIFR on behalf of a specific Administration (in all fragments of the Radio Regulations or in a specific one).



# Quick Queries (2/3)

- Identifier assigned by the BR

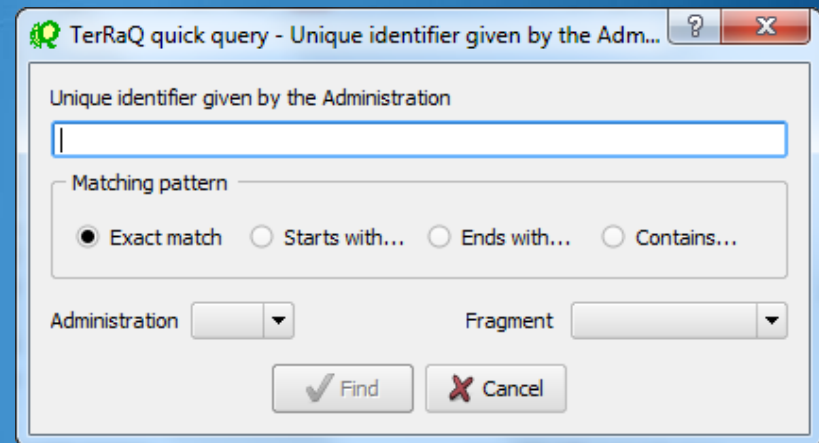
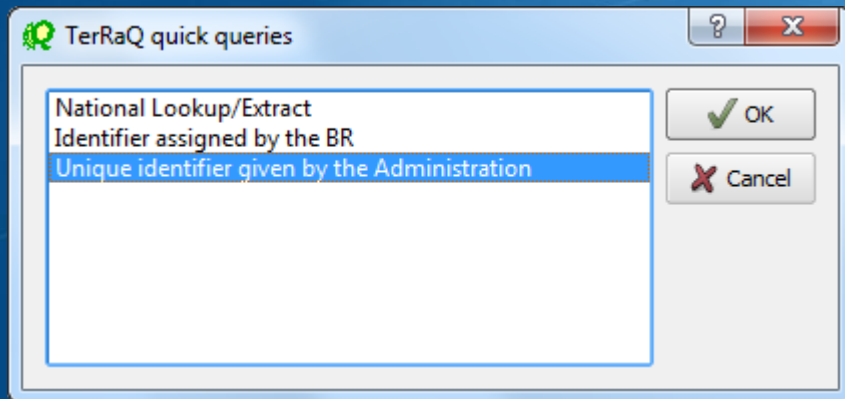
This query only focuses on the assignments with special value(s) for the identifier assigned by the BR.



# Quick Queries (3/3)

- Unique identifier given by the Administration

This query only focuses on the assignments with special value(s) for the unique identifier given by a specific Administration with a choice of the concerned Fragment of the BR IFIC.



# Current BR IFIC Publication Content

These screens show the statistics of the entries existing in each part and each fragment of the BR IFIC. The data is also grouped based on the notifying and concerned Administrations. Using these screens the users are able to quickly access the data grouped in one of these categories.

Current BRIFIC Number: 2755      Publication Date: 15/10/2013

RR 11 Publication No 2755  
[Information](#)

Part I (2455)      Part II (32194)  
 FM/TV (42)    FXM (2413)    FM/TV (3)    FXM (32191)

FM/TV Special Sections

GE84 Special Section No 213  
 Deadline for the receipt of comments: 23/01/2014  
[Information](#)

Part A (278)      Part B (192)      Part C (1)

LF/MF Special Sections

GE75 Special Section No 135  
 Deadline for the receipt of comments: 04/02/2014  
[Information](#)

Part A (7)      Part B (16)

FXM Special Sections (None)

Other Special Sections (None)

Active database: [Main database] C:/BR\_SOFT/TERRASYS/Data/BRIFIC\_2755.db3

Current BRIFIC Number: 2755      Publication Date: 15/10/2013

This BRIFIC involves:  
 521 Notices in the FM/TV domain      23 Notices in the LF/MF domain      39604 Notices in the FXM domain

The following table shows a summary of the statistics relating to this publication, based on the Notifying Administration and domain:

Notifying Administration	Total	FM/TV	LF/MF	FXM
ALG	2	0	2	0
ARG	1	0	0	1
AUT	27	27	0	0
BER	1	1	0	0
BUL	8	8	0	0
CAN	16	0	0	16
CUB	1	0	0	1
CZE	25	25	0	0
D	4	4	0	0
E	147	147	0	0
EST	7	7	0	0
F	373	39	0	334
FIN	2	2	0	0
INS	250	0	0	250
IRL	4	3	0	1
J	37021	21	0	37000
MGZ	91	0	0	91
LVA	5	5	0	0
MCO	2	2	0	0
MDA	104	0	1	103
RUS	1097	91	10	996
S	18	18	0	0
SUI	66	66	0	0
TUR	1	0	1	0
UKR	4	0	4	0
UZB	311	0	0	311

Active database: [Main database] C:/BR\_SOFT/TERRASYS/Data/BRIFIC\_2755.db3

# TerRaNV

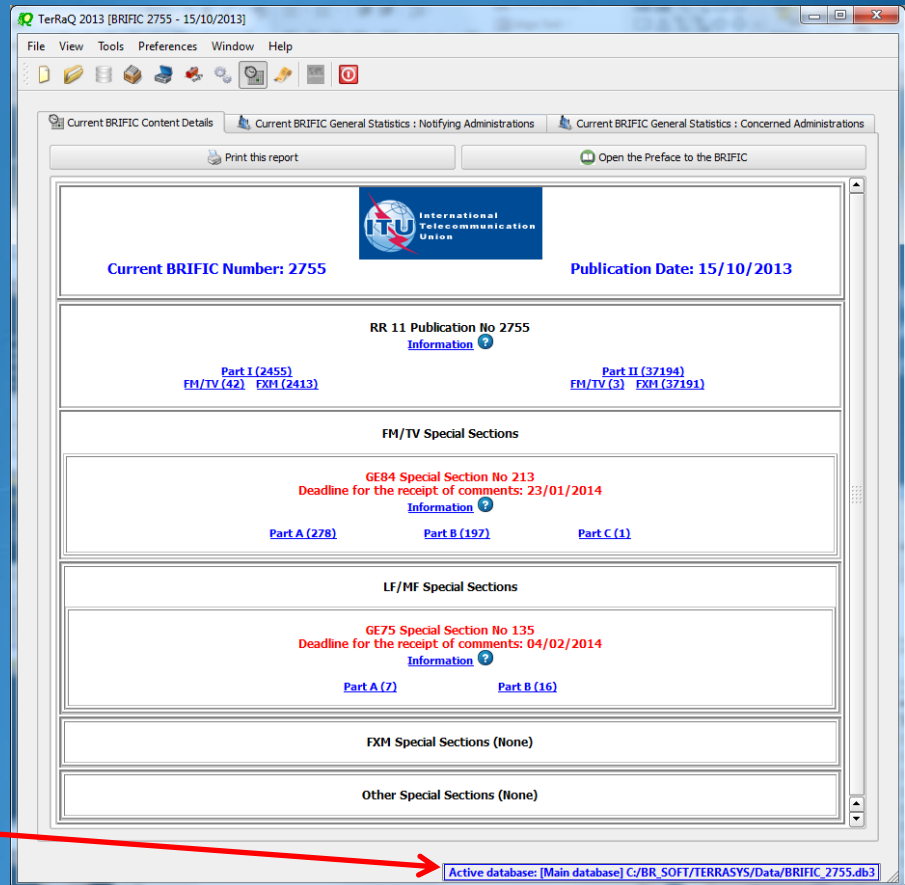
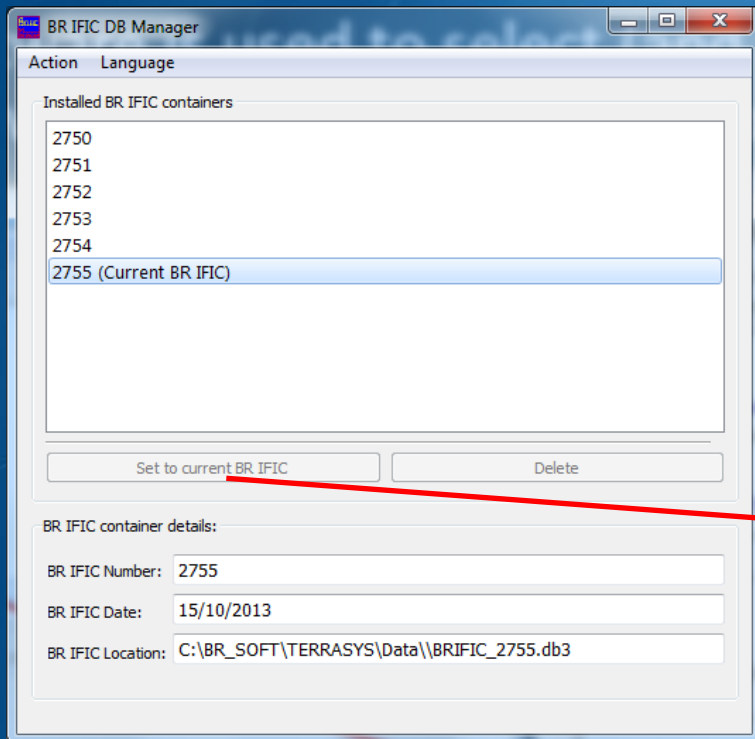
- Capabilities
  - Validation of electronic notice files
- Main new feature
  - Ability to be executed without being installed

# TerRaNotices

- Capabilities
  - Creation of electronic notices
  - Extraction of existing notices from BR IFIC
  - Validation of electronic notice files
- Main new features
  - Ability to read data from SQLite format
  - Ability to be executed without being installed

# BR IFIC DB Manager

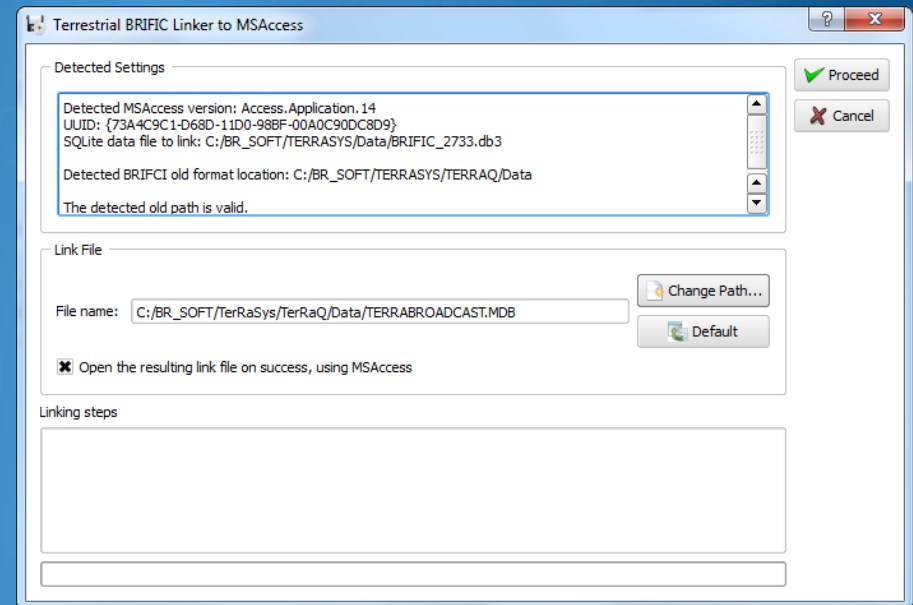
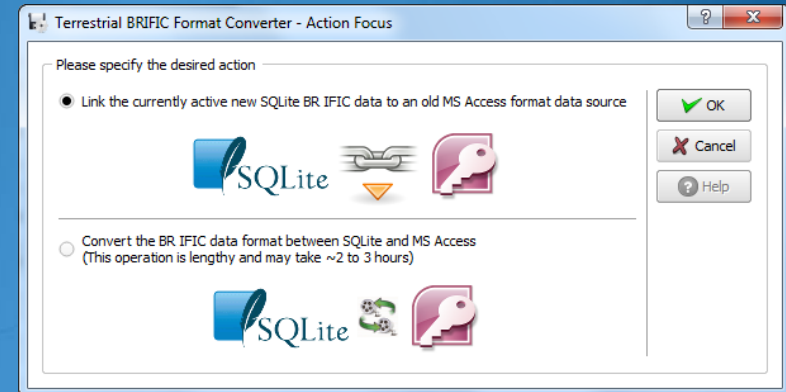
This software is used to select (and make active) an existing version of the BR IFIC database.



# Terrestrial BR IFIC Format Converter

In order to enable existing third-party software tools to access the data in the BR IFIC database (without the need to modify existing software), a format converter is also provided.

This application is able to provide a quick Microsoft Access bridge to access the data stored in SQLite format.

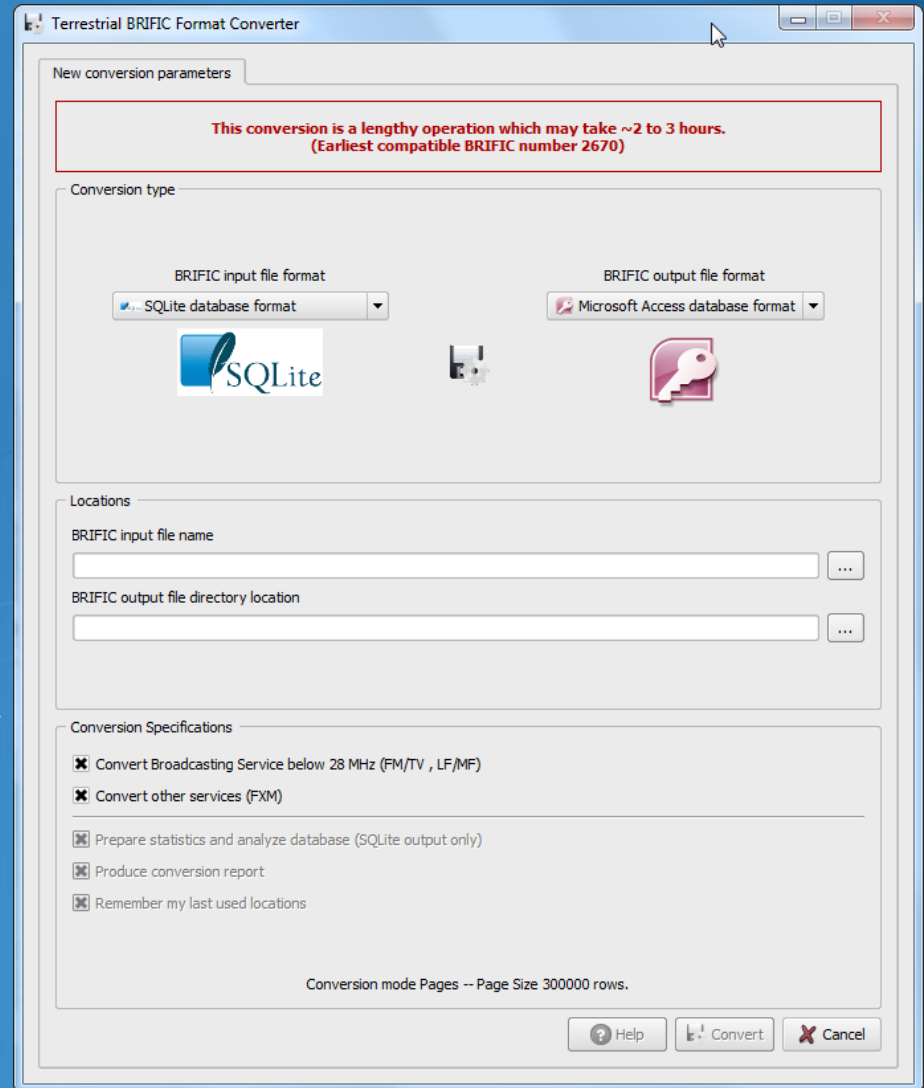




# Terrestrial BR IFIC Format Converter

Also it is possible to convert the whole set of data from SQLite format to Microsoft Access format or vice versa.

This conversion is a very lengthy process and should be used as a last option.



# BR IFIC ON WEB

The contents of each BR IFIC publication are also accessible on-line through:  
<http://www.itu.int/ITU-R/go/terrestrial-brific/en>

The screenshot shows the ITU website's BR IFIC (Terrestrial) page. The page features a navigation menu at the top, a search bar, and a main content area with a 'Publications' section. The 'Publications' section lists various documents and programs related to the BR IFIC. To the right of the text is a large image of a DVD labeled 'BRIFIC'. Below the DVD is an 'Information Note' link. At the bottom of the page is a table listing BR IFIC entries with columns for BR IFIC No., Date of Publication, Article 11 of RR (Index), Special Section, MDB Extract, and Note.

BR IFIC No.	Date of Publication	Article 11 of RR (Index)	Special Section	MDB Extract	Note
2755	15.10.2013	<a href="#">AR11_Parts1/2</a>	<a href="#">GE84/213</a> <a href="#">GE75/135</a>	<a href="#">IFIC2755</a>	<a href="#">ReadMe</a>
2754	01.10.2013	<a href="#">AR11_Parts1/2/3</a>	<a href="#">GE06/84</a> <a href="#">GE06L/713</a> <a href="#">ST61/1542</a>	<a href="#">IFIC2754</a>	<a href="#">ReadMe</a>
2753	17.09.2013	<a href="#">AR11_Parts1/2/3</a>	<a href="#">GE84/212</a>	<a href="#">IFIC2753</a>	<a href="#">ReadMe</a>
2752	03.09.2013	<a href="#">AR11_Parts1/2/3</a>	<a href="#">GE06/83</a>	<a href="#">IFIC2752</a>	<a href="#">ReadMe</a>
2751	20.08.2013	<a href="#">AR11_Parts1/2/3</a>	-	<a href="#">IFIC2751</a>	<a href="#">ReadMe</a>

# Conclusions

- The BR IFIC is a reference publication for Frequency Managers.
- Assignments recorded in the MIFR with a favourable finding have the right to international recognition (RR8.3). It is essential to consult the BR IFIC regularly.
- Acknowledgement of receipt for the notifying administration.
- Coordination with administrations of neighbouring countries.
- One copy of the BR IFIC is distributed free of charge to every administration.
- List (in PDF format) and an extract (in MDB format) of assignments included in the last publication on the ITU website at the following address:  
<http://www.itu.int/ITU-R/go/terrestrial-brific/en>.

# Thank you for your attention!

Contact Person: Saman Jalayerian  
Radiocommunication Bureau  
Terrestrial Services Department  
E-mail: [Saman.Jalayerian@itu.int](mailto:Saman.Jalayerian@itu.int)  
Telephone: +41 22 730 5507