



WORKSHOP SPACE PLANS

AP30/30A & AP30B

Véronique GLAUDE



Objectives



- ✓ Deepen your technical & regulatory knowledge about
Space Plans procedures
Appendices 30/30A and 30B

- ✓ How to use BR tools (Version 7) to:
 - **Submit** notices / comments
 - **Get/analyze** BR examination's results
 - **Perform** examinations



Time	Subject	Description
09:00-09:10	Introduction	
09:10-10:15	Exercise on submission	Exercise on validation of a sample with a correction of few often wrongly submitted parameters using SpaceCap and cross check with GIMS data
	Technical examination	Technical examination introduction (list of specific concepts, list of examination...)
	Exercise on SPS_REPORTs	Exercise on viewing results of MSPACE available in BR IFICs
10:15-10:45	Coffee break	
10:45-12:00	Introduction	
	Exercise on technical examination to analyze results of GIBC	Exercise on technical examination (GIBC/Art.21, ANX3, 6.6, ANX4) Exercise on viewing results available in BR IFICs using Reporting tools
12:00-12:30	RESOLUTIONS 49 and 552	
12:30-14:00	Lunch break	
14:00-14:30	AP30/30A & AP30B : BR IFIC and Web What to do on issue of a BR IFIC?	Navigating through the BR IFIC and the BR web to find information about Plans



Satellite project: from Radio Spectrum to MIFR

Operator requirements
(type of space service, freq. band, station type, ITU Region...)

Selecting the appropriate band in the Radio Spectrum

Selecting the appropriate PLAN / regulatory procedure

Submitting to ITU satellite network characteristics

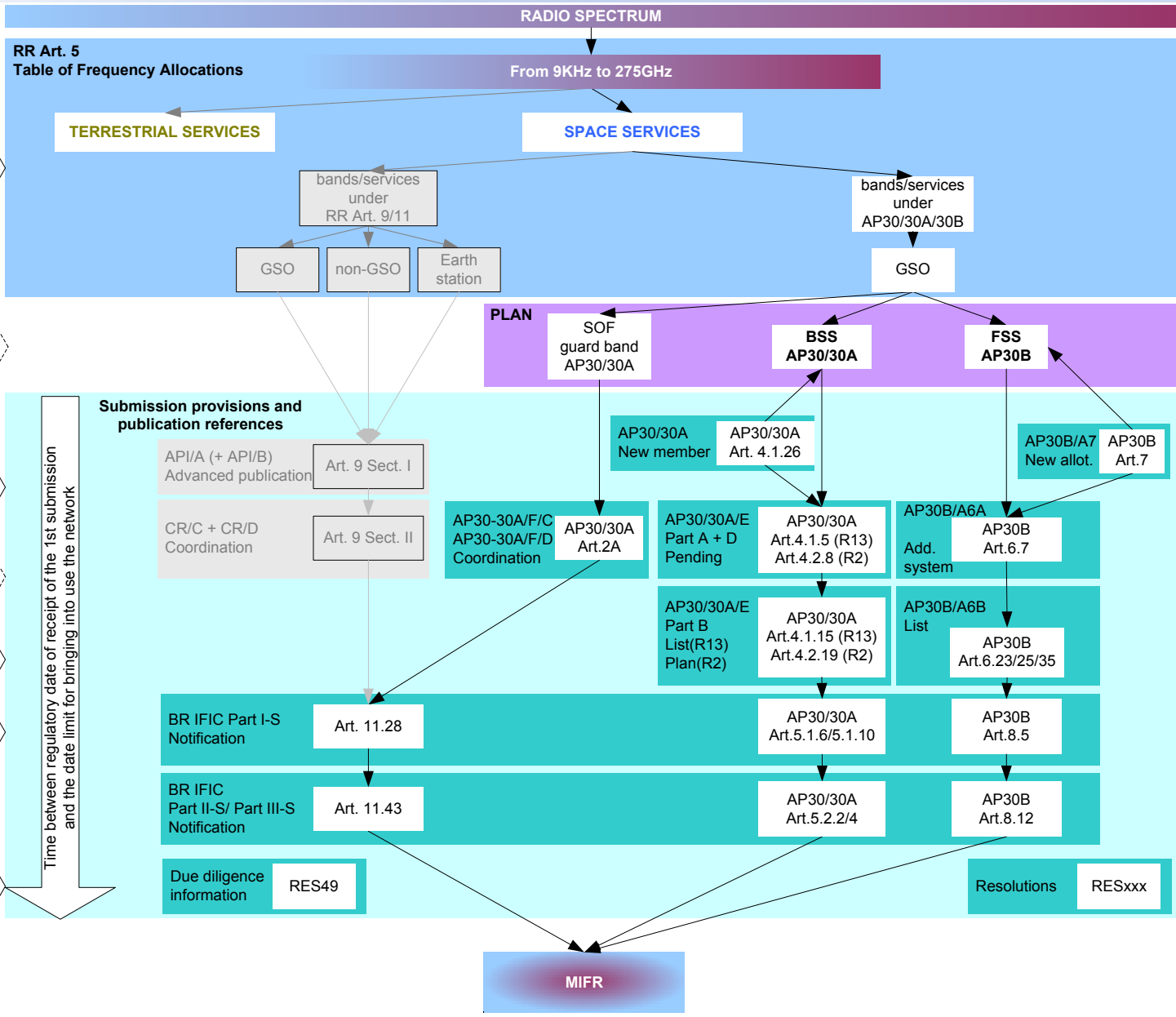
Seeking agreements with affected/affecting Administration

Submitting to ITU agreements and final characteristics

Submitting to ITU notification for recording assignments in MIFR

Submitting to ITU date of bringing into use confirmation and due diligence

Internationally recognised Operating space network





Which software can be used?



Preparation of a submission

- SpaceCap
- SpaceVal/(SpacePub)



Analyses of publications

- SpaceQry/SNS-Online/SNL-Online
- GIBC / SPS including reporting tool
- GIMS



Making comments on publications

- SpaceCom

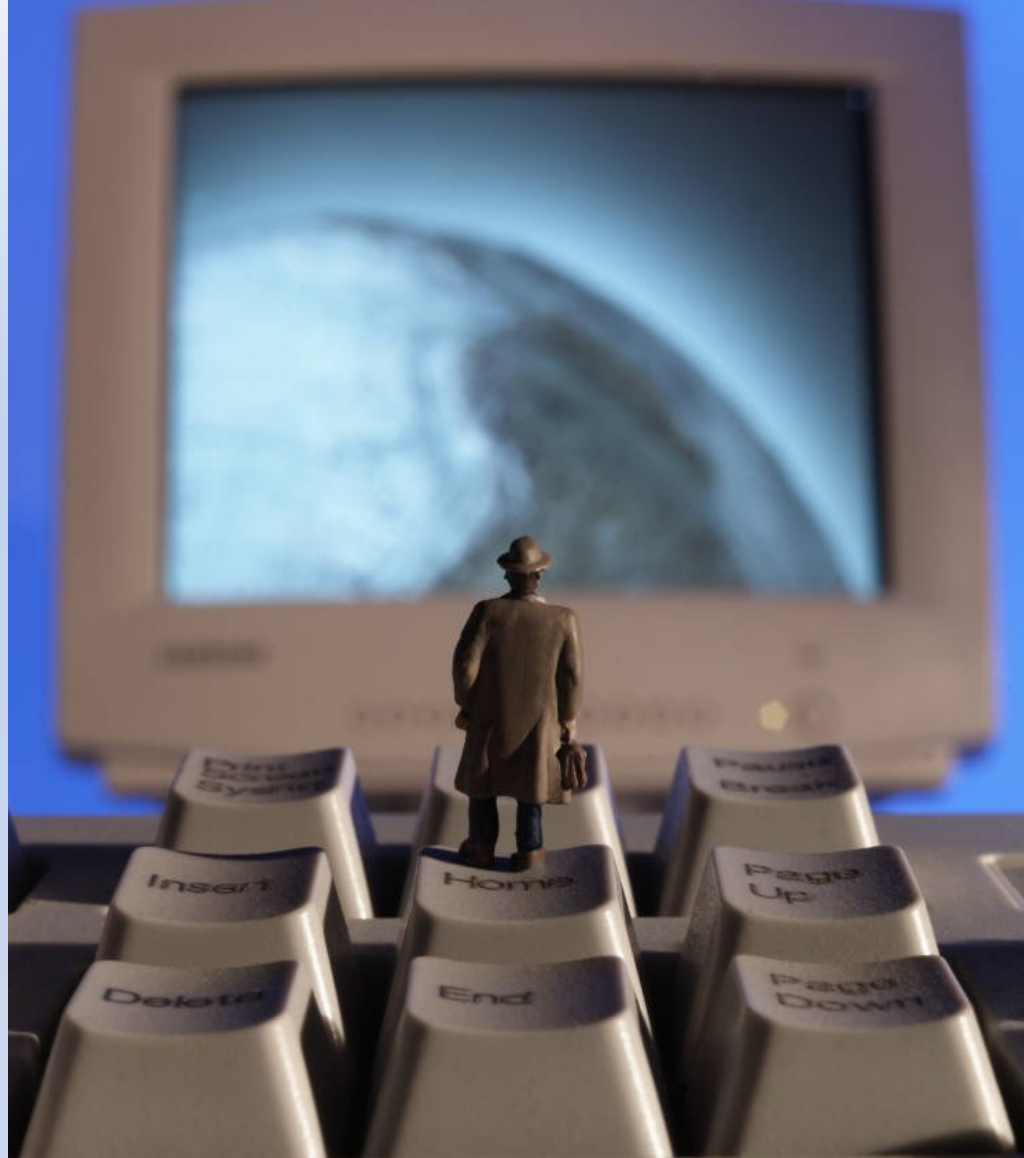


Coordination with administrations

- SpaceQry/SNS-Online/SNL-Online
- GIBC / SPS including reporting tools
- GIMS



Workshop on Space Plans (AP30/30A & AP30B)



Contact: veronique.glaude@itu.int