



SPACE SERVICES WEBSITE

SNL AND SNS ONLINE

Xavier Laurenson (BR/SSD/SPR)



SPACE SERVICES HOMEPAGE

[Español](#) | [Français](#)
[Advanced Search](#) | |

Home > ITU-R > Space Services

Search:

Space Services Department	
News	
Space Support	
BR IFIC	
Preface	
Cost Recovery	
Space Plans	
Databases and Services	
SNL	
SNS	

- [Areas of Work](#)
- [Newsroom](#)
- [Events](#)
- [Publications](#)
- [Statistics](#)
- [About ITU](#)

Space Services Department (SSD)

The Space Services Department (SSD) is responsible for coordination and recording procedures for space systems and earth stations.

The Department handles capture, processing and publication of data and carries out examination of frequency assignment notices submitted by administrations for inclusion in the formal coordination procedures or recording in the Master International Frequency Register (MIFR).

The Department is also responsible for managing the procedures for space related assignment or allotment plans of the ITU and for provision of assistance to administrations on all of the above issues.

Structure of the SSD

- Space Publication and Registration Division (SPR)
- Space Systems Coordination Division (SSC)
- Space Notification and Plans Division (SNP)

Activities

- [ITU/IDA Workshop on the efficient use of the spectrum/orbit resource](#)
- [Spectrum/orbit workshop - Geneva 2009](#)
- [Res.647 \(WRC-07\) - Emergency and disaster relief radiocommunication](#)
- [ITU-R Circular Telegrams \(CTITU\)](#)
- [Res.609 \(rev. WRC-07\) - Consultation meeting](#)

Statistics

- [Space Notices Treatment](#)

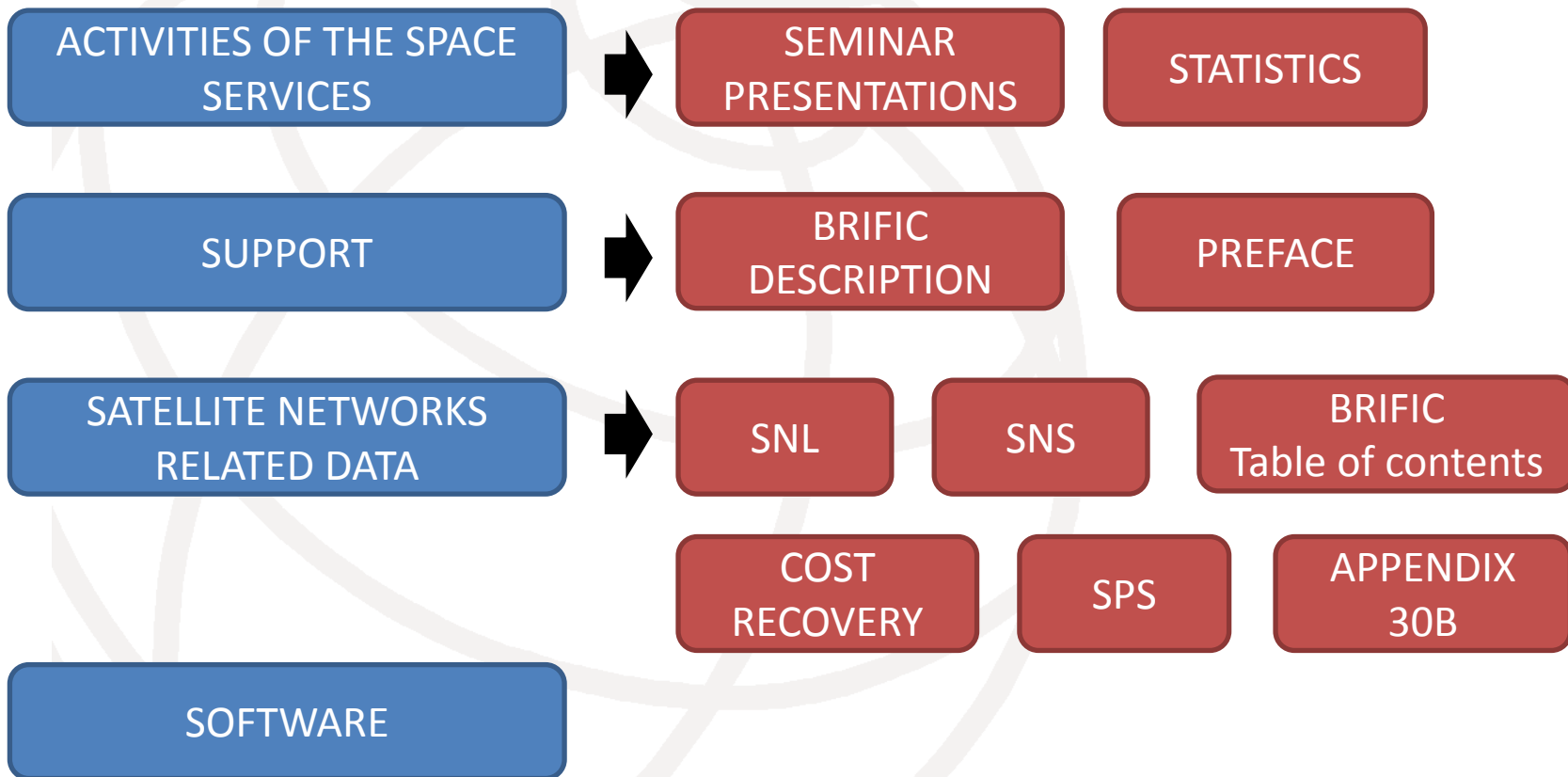
Space database and tools

- [Space Software](#)
- [BR Space seminar documents](#)
- [Bringing into use of satellite networks](#)
- [List of suspended satellite networks](#)

SNL ONLINE →

SNS ONLINE →

WHAT YOU CAN FIND



WHAT YOU CANNOT FIND

PUBLICATION FILES OF PARTS AND SPECIAL SECTIONS

GIMS DATABASE

SRS DATABASE

RESOURCES (DATABASES)

- **SNS online** (<http://www.itu.int/sns/>)
SNS data of the networks, subscription service
- **SNL online** (<http://www.itu.int/ITU-R/space/snl/>)
 - Use of the frequency spectrum and occupancy of the orbit (Part-A)
 - Special sections and Parts reference publications (Part B)
 - List of information « As received » (Part C)
 - List of networks suspended
 - Bringing into use of satellite networks
 - BSS service area exclusion
- **IFIC database** (IFICxxx.mdb)
(<http://www.itu.int/sns/demowic.html>)
- **Space Plans System (SPS) Database**
(<http://www.itu.int/ITU-R/go/space-plans-mifr/en>)
- **'WRC-07' FSS Plan; Appendix 30B**
(<http://www.itu.int/ITU-R/go/space-plans-ap30b/en>)

RESOURCES (SOFTWARE)

- **Space networks and related software**

<http://www.itu.int/ITU-R/go/space-software/en>

Download of the installation files

Documentation / Tutorial

SAM	SpaceCap	SpaceCom	SpacePub
SpaceQry	SpaceRefdb	SpaceVal	SPS
SRSConvert	SRSFixDV	GIMS	AP7Capture

RESOURCES (OTHER)

- Cost recovery (List of invoices issued / Free entitlements)
<http://www.itu.int/ITU-R/go/space-cost-recovery/en>
- Legends related to Parts and Special sections publications in the BRIFIC
<http://www.itu.int/ITU-R/go/space-brific/en>
- Latest version of seminar presentations and documents
<http://www.itu.int/ITU-R/go/space-presentation/en>
- Circular telegrams ITU-R
<http://www.itu.int/md/R00-CTITU-CIR/en>
- BR Circular letters
<http://www.itu.int/md/R00-CR-CIR/e>
- Publications relating to change of notifying administration
<http://www.itu.int/ITU-R/go/space-publication-change-of-administration/en>

SNL ONLINE

Space Network List

AVAILABLE TO ALL

USE OF FREQUENCY SPECTRUM
OCCUPANCY OF THE ORBITS

REFERENCE TO BR IFIC PUBLICATIONS

NETWORKS PUBLISHED "AS RECEIVED"

DATES OF BRINGING INTO USE
SUSPENSIONS

SNS ONLINE

Space Network System

TIES ACCOUNT /
SUBSCRIPTION

DATA OF THE NETWORK

DOWNLOAD OF A NETWORK
(SNS FORMAT)

DEADLINES

CREATION OF A RES49 FILING

SPACE NETWORK LIST ONLINE

PART A

USE OF FREQUENCY SPECTRUM
OCCUPANCY OF THE ORBITS

DATES OF BRINGING INTO USE

PART B

REFERENCE TO WIC / BRIFIC
PUBLICATIONS

SUSPENSIONS

PART C

NETWORKS PUBLISHED “AS
RECEIVED”

CHANGE OF SATELLITE NAME

BSS SERVICE EXCLUSION

ANNUAL REPORT

SNL IN THE BRIFIC DVD-ROM
EVERY 3 MONTHS

ANNUAL COLLECTION ON DVD-
ROM

SNL PART A

Provide to users information:

- On the use of the frequency spectrum
- The occupancy of the geostationary orbits as well as on non-geostationary orbits
- General lists on PDF on the website and on the BRIFIC every 3 months



QUERY

FREQUENCY USE - ORBIT OCCUPANCY (PART-A)

- ▄▄ List of space networks by frequency bands and orbital position

REPORTS

- ▄▄ Quarterly publication (download)
- ▄▄ ITU BR Annual Space Report on the use of the GSO and other orbits

REFERENCE PUBLICATIONS (PART-B)

- ▄▄ Query by general publication references
- ▄▄ Query by Special Section name
- ▄▄ Query by group of Special Sections
- ▄▄ Definition of the Special Sections : 

SATELLITE NETWORK INFORMATION

- ▄▄ Bringing into use
- ▄▄ Suspension
- ▄▄ Change of names
- ▄▄ Change of notifying administration

INFORMATION "AS RECEIVED" (PART-C)

- ▄▄ Coordination Requests
- ▄▄ Notifications of Space Stations
- ▄▄ Notifications of Earth Stations
- ▄▄ Article 4 of AP30/30A
- ▄▄ Article 2A of AP30/30A
- ▄▄ Articles 6 and 7 of AP30B

BSS - RR 23.13 AND RES 553

- ▄▄ BSS service area exclusion under RR 23.13 - Networks published in AP30/E Part A
- ▄▄ BSS service area exclusion under RR 23.13 - Networks published in CR/C
- ▄▄ BSS in 21.4 - 22 GHz (WRC-12)

SNL PART A - QUERY

Query by:

- Plan / Non-planned services
- Frequency bands
- Orbital position
- Submission reason (API, Coordination, Notification)

LIST OF SPACE NETWORKS/EARTH STATIONS (BY FREQUENCY AND ORBITAL POSITION)

Enter data and select emission/reception and station type

Non-Planned Services Planned Services/SOF

Frequency [MHz]: from to


Emission/Reception: Emission Reception All

Longitude: from to

Space or Earth: Geostationary Non-geostationary Earth station

Submission reason: API Coordination Notification All

[Contact BR](#) | [Help](#) | [News](#) | [FAQ](#) | [Home](#) | [Discussion Forum](#) | [Related Software](#) | [Space IFIC](#)
Revised: 24 January 2011

 International Telecommunication Union, 1996-2012

SNL PART A - RESULT

Result of the query:

- The list of satellite network with the notification reason (A, C, N, U) corresponding to the criteria of the query
- For a network, the list of all frequency assignments (in red, the assignments inside the criteria)

Please click on the satellite name to see a list of all publications relating to the satellite

LONGITUDE	ADM.ORG	SATELLITE NAME	NOTIF.REASON	BR. IFIC	FREQUENCIES
75	PNG	PACIFISAT-1	A	view	
75	LUX	LUX-G7-17	A	view	
75	UAE	YAHSAT-G5-75E	A	view	
75	UAE	YAHSAT-G6-75E	A	view	
75	LUX	LUX-G8-17	A	view	
75	PNG	PACIFISAT KA-75E	A	view	
76	F	F-SAT-KA-E-76E	A	view	
76	F	F-SAT-N-E-76E	A	view	
76	F	F-SAT-KA-E-76E	C	view	
76	F	F-SAT-N-E-76E	C	view	
76	CYP	KYPROS-SELENE	A	view	
77.5	KAZ	KAZSAT7	A	view	
77.5	KAZ	KAZSAT7	C	view	
77.5	KAZ	KAZSAT7	N	view	
77.5	KAZ	KAZSAT7R	A	view	
78	F	ASAT E078	A	view	
78	ISR	AMS-C1-78E	A	view	
78	F	BASAT E078	A	view	



BEAMNAME	EMISS	REC	FREQ (MHz)	BDWIDTH(kHz)	FR.MIN(MHz)	FR.MAX(MHz)	CLASS
ADVP	E		1538.5	41000	1518	1559	EI
ADVP	E		1635.25	50500	1610	1660.5	EI
ADVP	E		1671.5	7000	1668	1675	EI
ADVP	E		3800	800000	3400	4200	EC
ADVP	E		5075	150000	5000	5150	EJ
ADVP	E		5787.5	125000	5725	5850	EC
ADVP	E		6287.5	875000	5850	6725	EC
ADVP	E		7050	50000	7025	7075	EC
ADVP	E		11075	250000	10950	11200	EC
ADVP	E		11575	250000	11450	11700	EC
ADVP	E		11950	500000	11700	12200	EC
ADVP	E		12350	300000	12200	12500	EC
ADVP	E		12625	250000	12500	12750	EC
ADVP	E		13325	150000	13250	13400	EC
ADVP	E		13325	150000	13250	13400	EI
ADVP	E		13875	250000	13750	14000	EC
ADVP	E		14250	500000	14000	14500	EC
ADVP	E		14250	500000	14000	14500	EI
ADVP	E		14650	300000	14500	14800	EC
ADVP	E		15550	300000	15400	15700	EC
ADVP	E		15550	300000	15400	15700	EI
ADVP	E		17500	400000	17300	17700	EC
ADVP	E		18700	2e+06	17700	19700	EC
ADVP	E		19950	500000	19700	20200	EC
ADVP	E		19950	500000	19700	20200	EI
ADVP	E		21700	600000	21400	22000	EB
ADVP	E		25000	500000	24750	25250	EC
ADVP	E		27250	500000	27000	27500	EC
ADVP	E		28500	2e+06	27500	29500	EC

SNL PART B

Provide to users information:

- On all reference publications (Special sections and Parts) related to Space services
- First publication SAT1 on 16.02.1965
- Updated every 2 weeks
- **The files of the publications are not available**

QUERIES



FREQUENCY USE - ORBIT OCCUPANCY (PART-A)

:: List of space networks by frequency bands and orbital position

REPORTS

:: Quarterly publication (download)
 :: ITU BR Annual Space Report on the use of the GSO and other orbits

REFERENCE PUBLICATIONS (PART-B)

:: Query by general publication references
 :: Query by Special Section name
 :: Query by group of Special Sections
 :: Definition of the Special Sections : 

SATELLITE NETWORK INFORMATION

:: Bringing into use
 :: Suspension
 :: Change of names
 :: Change of notifying administration

INFORMATION "AS RECEIVED" (PART-C)

:: Coordination Requests
 :: Notifications of Space Stations
 :: Notifications of Earth Stations
 :: Article 4 of AP30/30A
 :: Article 2A of AP30/30A
 :: Articles 6 and 7 of AP30B

BSS - RR 23.13 AND RES 553

:: BSS service area exclusion under RR 23.13 - Networks published in AP30/E Part A
 :: BSS service area exclusion under RR 23.13 - Networks published in CR/C
 :: BSS in 21.4 - 22 GHz (WRC-12)

SNL PART B - QUERY

Query by:

- Type of procedure
- Satellite name / Earth station name (None by default)
- ADM / Orbital position
- Date of receipt or date of publication

Type of Procedure :		<input type="checkbox"/> ALL	<input type="checkbox"/> API	<input type="checkbox"/> Coordination	<input type="checkbox"/> Notification	<input type="checkbox"/> RES49	<input type="checkbox"/> AP30&30A	<input type="checkbox"/> AP30B
SNS ID	<input type="text"/>							
Satellite Name <small>(To select from the list or to type)</small>	all	<input type="text"/>	Earth Station Name	none	<input type="text"/>			
ADM	all	<input type="text"/>	Network Org / Area	all	<input type="text"/>			
IFIC/WIC Number	<input type="text"/>		Year	<input type="text"/>				
IFIC Date - From	<input type="text"/>		To	<input type="text"/>				
Date of Rcv - From	<input type="text"/>		To	<input type="text"/>				
		All GSO <input checked="" type="checkbox"/>	All N-GSO <input checked="" type="checkbox"/>	or Nominal orbital position - in degrees (+) for East or (-) for West:				
From (-180)	<input type="text"/>		To (180)	<input type="text"/>				
<input type="checkbox"/> I want only suppressed networks				Submit		Reset		
<input type="checkbox"/> Open the results in a new window								

SNL PART B - RESULT

Result of the query:

- A list of reference publications corresponding to the query's criteria
- The list can be exported in text format or Excel format
- Columns can be ordered
- Links to SNS online and to the database IFIC.mdb
- Link to old/new related networks (change of satellite name)

Your query : / Type = gso or ngso / Satellite network = AUSSAT A 160E / Earth station = none

[Complete list](#)  -
 [Explanations](#)  -
 [Export in txt format](#)  -
 [Export in Excel format](#) 

Total line = 6/6

Old networks related : [AUSSAT-1/](#)

ID number (SMS)	adm	ORG or Geo.area	Satellite name	Earth station	long_nom	Date of receipt	ssn_ref	ssn_no	ssn rev	ssn rev no	Part/ Art.	WIC/IFIC (ific.mdb)	WIC/IFIC date
up down	up down	up down	up down	up down	up down	up down	up down	up down				up down	
90500089	AUS		AUSSAT A 160E		160	28.06.1991	AR11/C	296	M	1		1987	30.07.1991
90500083	AUS		AUSSAT A 160E		160		PART I-S					2232	18.06.1996
90500083	AUS		AUSSAT A 160E		160		PART II-S					2235	09.07.1996
	AUS		AUSSAT A 160E		160	07.09.1998	RES49	72				2409	21.12.1999
90500089	AUS		AUSSAT A 160E		160	21.02.1984	AP30/C	73				2455	16.10.2001
90500083	AUS		AUSSAT A 160E		160	05.06.2007	RES4	382				2630	14.10.2008

SNL PART C

Provide to users information:

- On pending satellite networks received by the Bureau but not yet published in a Special section or PART I-S
- The “As received” information is also published in the BRIFIC
- Updated every 2 weeks

FREQUENCY USE - ORBIT OCCUPANCY (PART-A)

- ⌘ List of space networks by frequency bands and orbital position

REPORTS

- ⌘ Quarterly publication (download)
- ⌘ ITU BR Annual Space Report on the use of the GSO and other orbits

REFERENCE PUBLICATIONS (PART-B)

- ⌘ Query by general publication references
- ⌘ Query by Special Section name
- ⌘ Query by group of Special Sections
- ⌘ Definition of the Special Sections : 

SATELLITE NETWORK INFORMATION

- ⌘ Bringing into use
- ⌘ Suspension
- ⌘ Change of names
- ⌘ Change of notifying administration

INFORMATION "AS RECEIVED" (PART-C)

- ⌘ Coordination Requests
- ⌘ Notifications of Space Stations
- ⌘ Notifications of Earth Stations
- ⌘ Article 4 of AP30/30A
- ⌘ Article 2A of AP30/30A
- ⌘ Articles 6 and 7 of AP30B

BSS - RR 23.13 AND RES 553








- ⌘ BSS service area exclusion under RR 23.13 - Networks published in AP30/E Part A
- ⌘ BSS service area exclusion under RR 23.13 - Networks published in CR/C
- ⌘ BSS in 21.4 - 22 GHz (WRC-12)



LISTS

SNL PART C - INFORMATION

- List of satellite networks with reference to the BRIFIC in which the “As received” information can be found
- “As received” information of the network (database and GIMS) can also be downloaded directly from the list

Type	NTC_ID	ACT_CODE	ADM	NTWK_ORG	SAT_NAME	LONG_NOM	D_RCV	IFIC_NO	D_IFIC
	112500225	A	E		OPTOS		30/10/2012	2732	13/11/2012
	112500198	M	RUS		SPECTR-R		10/09/2012	2730	16/10/2012
	112500193	A	KOR		KHUSAT-01		31/08/2012	2728	18/09/2012
	113500003	A	F	ESA	SENTINEL-5P		10/07/2012	2731	30/10/2012
	113500002	A	F		ADM-AEOLUS		10/05/2012	2728	18/09/2012
	113500001	A	F		TARANIS		18/04/2012	2728	18/09/2012
	112500086	M	USA		TDRS 167.5W	-167.5	17/04/2012	2719	15/05/2012

SNL - BRINGING INTO USE

Provide to users information:

- On the dates of bringing into use of planned and non-planned satellite network frequency assignments
- Frequency assignments appear in the list after their publication in PART I-S of the BRIFIC
- Updated every 2 weeks

FREQUENCY USE - ORBIT OCCUPANCY (PART-A) <ul style="list-style-type: none"> List of space networks by frequency bands and orbital position 	REPORTS <ul style="list-style-type: none"> Quarterly publication (download) ITU BR Annual Space Report on the use of the GSO and other orbits
REFERENCE PUBLICATIONS (PART-B) <ul style="list-style-type: none"> Query by general publication references Query by Special Section name Query by group of Special Sections Definition of the Special Sections :  	SATELLITE NETWORK INFORMATION <ul style="list-style-type: none"> Bringing into use Suspension Change of names Change of notifying administration
INFORMATION "AS RECEIVED" (PART-C) <ul style="list-style-type: none"> Coordination Requests Notifications of Space Stations Notifications of Earth Stations Article 4 of AP30/30A Article 2A of AP30/30A Articles 6 and 7 of AP30B 	BSS - RR 23.13 AND RES 553 <ul style="list-style-type: none"> BSS service area exclusion under RR 23.13 - Networks published in AP30/E Part A BSS service area exclusion under RR 23.13 - Networks published in CR/C BSS in 21.4 - 22 GHz (WRC-12)



LIST

SNL - BRINGING INTO USE


- The column “Confirmed brought into use” indicates the status of the assignments: Y (Confirmed), N (Not yet confirmed)
- If the assignment is not yet confirmed, the column “Date of bringing into use” indicates the foreseen date and the column “Expiry Date” indicates the date before which the assignment has to be brought into use
- Queries can be performed on this list
- The result can be exported in text format or Excel format

Notice ID (SNS)	Satellite Name (SNL Part B)	ADM	ORG	Long_nom	Date of receipt of the notice	Date of bringing into use	Confirmed brought into use	Expiry Date for Bringing Into Use	Publication	Provision
up down	up down	up down		up down	up down	up down	up down	up down	up down	up down
110500239	3GSAT-G17R	F		10	12.07.2010	01.03.2010	Y		Part II-S	11.2
98500190	ACE	USA		N-GSO	18.12.2006	25.08.1997	Y		Part II-S	11.2
99500078	ACRIMSAT	USA		N-GSO	18.12.2006	21.12.1999	Y		Part II-S	11.2
102500532	ACS-1	USA		-101	04.09.2007	01.05.1995	Y		Part II-S	11.2
110500203	ADF 156E GOV	AUS		156	30.06.2011	01.05.2008	Y		Part II-S	11.2
106500013	AEOLUS	F	ESA	N-GSO	07.09.2006	01.01.2009	N	30.01.2013	Part II-S	11.2
103500278	AFRIBSS	USA		21	12.12.2003	01.10.1998	Y		Part II-S	11.2
103500278	AFRIBSS	USA		21	12.12.2003	07.01.1999	Y		Part II-S	11.2
106500322	AGILE	I		N-GSO	31.08.2006	23.04.2007	Y		Part II-S	11.2

SNL – SUSPENDED SATELLITE NETWORKS

Provide to users information:

- On requests for suspension and resumption of operation of satellite networks
- Requests are done under provision No.11.49 or § 8.17 of Article 8 of Appendix 30B
- Updated every 2 weeks

FREQUENCY USE - ORBIT OCCUPANCY (PART-A) :: List of space networks by frequency bands and orbital position	REPORTS :: Quarterly publication (download) :: ITU BR Annual Space Report on the use of the GSO and other orbits
REFERENCE PUBLICATIONS (PART-B) :: Query by general publication references :: Query by Special Section name :: Query by group of Special Sections :: Definition of the Special Sections : 	SATELLITE NETWORK INFORMATION :: Bringing into use :: Suspension :: Change of names :: Change of notifying administration
INFORMATION "AS RECEIVED" (PART-C) :: Coordination Requests :: Notifications of Space Stations :: Notifications of Earth Stations :: Article 4 of AP30/30A :: Article 2A of AP30/30A :: Articles 6 and 7 of AP30B	BSS - RR 23.13 AND RES 553 :: BSS service area exclusion under RR 23.13 - Networks published in AP30/E Part A :: BSS service area exclusion under RR 23.13 - Networks published in CR/C :: BSS in 21.4 - 22 GHz (WRC-12)



LIST

SNL – SUSPENDED SATELLITE NETWORKS

- The column “Date of suspension” indicates the date on which the suspension has begun
- If the column “Date of resumption” is empty, the network has not resumed its operation
- Under provision No.11.49 or § 8.17 of Article 8 of Appendix 30B, a network can be suspended up to 2 years (3 years from 01.01.2013, WRC-12)
- Queries can be performed on the list
- The result can be exported in text format or Excel format

Notice ID	Satellite Name	ADM	ORG	Long_nom	Date of receipt of request	Date of suspension	Date of resumption of operation	Provision
up down	up down	up down		up down	up down	up down	up down	
103500127	INTERSPUTNIK-17E	RUS	IK	17	10.10.2011	02.09.2011	31.12.2011	11.49
109500232	INTERSPUTNIK-17E-CK	RUS	IK	17	10.10.2011	02.09.2011	31.12.2011	11.49
110500157	PALAPA-B3-EC	INS		118	06.07.2011	01.08.2011		11.49
109500491	PALAPA-C3-K	INS		118	06.07.2011	01.08.2011		11.49
108501134	CHINASAT-163E	CHN		163		09.07.2011		
90501090	ZSSRD-2	RUS		-16	27.07.2011	20.01.2011		11.49
111500139	ARABSAT 6E-34.5E	ARS	ARB	34.5	30.04.2011	01.01.2011	05.01.2012	11.49
110500037	MEASAT-5.7E	MLA		5.7	01.04.2011	15.12.2010		11.49

SNL – BSS SERVICE AREA EXCLUSION

Provide to users information:

- On requests for Broadcasting Satellite Service, service area exclusion
- Requests are done under provision RR 23.13
- Query for networks published in AP30/E Part A Special Section
- Query for networks published in CR/C Special Section

FREQUENCY USE - ORBIT OCCUPANCY (PART-A)	REPORTS
:: List of space networks by frequency bands and orbital position	:: Quarterly publication (download) :: ITU BR Annual Space Report on the use of the GSO and other orbits
REFERENCE PUBLICATIONS (PART-B)	SATELLITE NETWORK INFORMATION
:: Query by general publication references :: Query by Special Section name :: Query by group of Special Sections :: Definition of the Special Sections :	:: Bringing into use :: Suspension :: Change of names :: Change of notifying administration
INFORMATION "AS RECEIVED" (PART-C)	BSS - RR 23.13 AND RES 553
:: Coordination Requests :: Notifications of Space Stations :: Notifications of Earth Stations :: Article 4 of AP30/30A :: Article 2A of AP30/30A :: Articles 6 and 7 of AP30B	:: BSS service area exclusion under RR 23.13 - Networks published in AP30/E Part A :: BSS service area exclusion under RR 23.13 - Networks published in CR/C :: BSS in 21.4 - 22 GHz (WRC-12)

QUERIES

Non-Planned band satellite networks - Broadcasting Satellite Service, service area exclusion requests under RR 23.13 - Last update: BR IFIC 2716 of 03/04/2012

Please note that only requests under 23.13 received after 01.01.2011 are listed.

Satellite Name <small>(To select from the list or to type)</small>	<input type="text" value="all"/>	SNS ID	<input type="text"/>
Adm responsible	<input type="text" value="all"/>	Network Org	<input type="text" value="all"/>
Adm requesting exclusion under RR 23.13	<input type="text" value="all"/>	<input type="checkbox"/> <small>View only publications with exclusion request(s) received</small>	
Date of receipt of the request	<input type="text" value="dd/mm/yyyy"/>	To	<input type="text" value="dd/mm/yyyy"/>
All GSO <input checked="" type="checkbox"/> All N-GSO <input checked="" type="checkbox"/> or Nominal orbital position - in degrees (+) for East or (-) for West:			
From (-180)	<input type="text"/>	To (180)	<input type="text"/>

SNL – BSS SERVICE AREA EXCLUSION - RESULT

- The requests has to be done within the four month period following the publication of the Special section
- Queries can be performed on this list
- The result can be exported in text format or Excel format

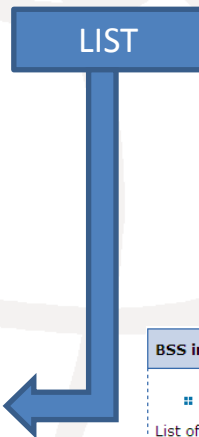
Notice ID (SNS)	Satellite Name (SNL Part B)	adm	ntwk_org	long_nom	CR/C No	BR IFIC No	BR IFIC date	Administration requesting exclusion from service area	Date of receipt of the request	< 4 months	Remarks
up down	up down	up down	up down	up down	up down	up down		up down	up down	up down	up down
111520289	RAGGIANA-7	PNG		37	2991	2709	13.12.2011	PAK	14.03.2012	yes	
111520292	RAGGIANA-11	PNG		134	2992	2709	13.12.2011	PAK	14.03.2012	yes	
111520293	RAGGIANA-12	PNG		97.5	2993	2709	13.12.2011	PAK	14.03.2012	yes	
111520294	RAGGIANA-13	PNG		108	2994	2709	13.12.2011	PAK	14.03.2012	yes	
311520326	QATARSAT-6	QAT		25.5	2690	2710	10.01.2012	PAK	14.03.2012	yes	
311520168	NEW DAWN 22	PNG		62	2641	2707	15.11.2011	CHN	12.03.2012	yes	
311520166	NEW DAWN 23	PNG		64	2642	2707	15.11.2011	CHN	12.03.2012	yes	
311520165	NEW DAWN 21	PNG		60	2653	2707	15.11.2011	CHN	12.03.2012	yes	

SNL – BSS IN 21.4 – 22 GHz (WRC-12)

Provide to users information:

- On requests for special procedure under Resolution 533 (WRC-12)
- The form of submission for information required under Resolution 552 (WRC-12)

<p>FREQUENCY USE - ORBIT OCCUPANCY (PART-A)</p> <ul style="list-style-type: none"> List of space networks by frequency bands and orbital position 	<p>REPORTS</p> <ul style="list-style-type: none"> Quarterly publication (download) ITU BR Annual Space Report on the use of the GSO and other orbits
<p>REFERENCE PUBLICATIONS (PART-B)</p> <ul style="list-style-type: none"> Query by general publication references Query by Special Section name Query by group of Special Sections Definition of the Special Sections : 	<p>SATELLITE NETWORK INFORMATION</p> <ul style="list-style-type: none"> Bringing into use Suspension Change of names Change of notifying administration
<p>INFORMATION "AS RECEIVED" (PART-C)</p> <ul style="list-style-type: none"> Coordination Requests Notifications of Space Stations Notifications of Earth Stations Article 4 of AP30/30A Article 2A of AP30/30A Articles 6 and 7 of AP30B 	<p>BSS - RR 23.13 AND RES 553</p> <ul style="list-style-type: none"> BSS service area exclusion under RR 23.13 - Networks published in AP30/E Part A BSS service area exclusion under RR 23.13 - Networks published in CR/C BSS in 21.4 - 22 GHz (WRC-12)



BSS in 21.4 - 22 GHz (WRC-2012)

Resolution 553 (WRC-12)

List of satellite networks for which a request for the special procedure under Resolution 553 (WRC-12) has been received by the Bureau:

ADM	Satellite network	Date of receipt	SNS ID
IRN	IRANDBS4-KA_1	02.05.2012	112525001

Resolution 552 (WRC-12)

Form of submission for information required under Resolution 552 (WRC-12): [FORM_RES552.xls](#)

SPACE NETWORK SYSTEM ONLINE

ONLINE ACCESS TO THE SNS
DATABASE

QUERY SYSTEM FOR PLANNED
BANDS

QUERY SYSTEM FOR NON-
PLANNED BANDS

YEARLY SUBSCRIPTION SERVICE

FREE SERVICE FOR TIES
REGISTERED USERS

EXPORT OF THE SNS DATABASE
OF A NETWORK

REGULATORY DEADLINES

CREATION OF DUE DILIGENCE
FILING

SNS – MENU

Space Network Systems Online

Welcome to Space Network Systems Online!

SNS Online gives access to the **Space Networks Systems Database** of the Radiocommunication Bureau of the ITU. The database contains AP4 data of more than 10600 geostationary satellite filings, 1070 non-geostationary satellite filings and 7900 earth station filings.

SNS Online is a yearly [subscription service](#). It is available as a free service for [TIES](#) registered users.

Note: SNS Online will only be available 48 hours after registering for TIES.

Try the [demo pages](#) and if you are not a TIES registered user [subscribe](#) to the service.

As a subscriber

Query for non-planned bands

res:

Query for planned bands

reface

API Query (Regulatory deadlines)

Resolution 49 Query (Due diligence filing)

SNS Database

[Description \(Pdf document:see Section III\)](#)

View the description of the SNS database

[SNS Database Changes](#)

View the description of structural changes to SNS (INGRES and MS/ACCESS)

Query Systems

[General Query System \(non-planned bands\)](#)

Navigate through the SNS database using predefined queries to retrieve a list of satellites or earth stations. Select a specific satellite or earth station and view all the beams/antennas, frequencies, emissions, etc.

[Space Plans Query System](#) **NEW**

allows you to navigate through the SNS database (planned services) to retrieve a list of satellites in the planned services, their frequencies, emissions, coordination information for the selected station.

[Suppressed Notices Query System](#)

Display notices in the SNS database which have been suppressed. Use the query in case you want to retrieve a list of suppressed satellites or earth stations.

[Advance Publication Query System](#)

Retrieve advance publication data from the database. Based on your input parameters retrieve a list of satellites and get the summary information of your selection.

[Resolution 49 Publication Query System](#)

Retrieve Resolution 49 publication data from the database. Based on your input parameters retrieve a list of satellites and get the summary information of your selection.

SNS – GENERAL QUERY SYSTEM 1/4

Query by:

- Plan / Non-planned services (From the main menu)
- Satellite network, Administration, Notice ID
- Orbital position
- Submission reason (API, Coordination, Notification)
- Processing status (Recorded in the MIFR / under examination)

NETWORKS/EARTH STATION INFORMATION

Enter data and select category and satellite/station type

Satellite/Earth Station Name:

or enter Notice identifier:

Notifying Administration: ▼

Geo
 Non-Geo
 Earth Station **NEW**
 Radio Astronomy

Network Organization: ▼

Longitude (from):

Longitude (to) :

Notification reason: Coordination Coordination(Earth) Notification All

Processing Status: Recorded (MIFR) All

Satellite/Earth Station: Geostationary Non-Geostationary Earth Station **NEW** Radio Astronomy

SNS – GENERAL QUERY SYSTEM 2/4

Result of the query:

- List of networks
- Link to the network characteristics
- Category: **A** (Advance publication), **C** (Coordination), **N** (Notification), **U** (Due diligence)
- Status for notification: **20** (Under examination, PART I-S), **50** (Recorded in the MIFR, PART II-S), **19** (Unfavorable, PART III-S)

<u>SATELLITE NAME</u>	<u>CATEGORY</u>	<u>ADM</u>	<u>NTWK</u>	<u>ORG</u>	<u>LONGITUDE</u>	<u>DATE OF PROTECTION</u>	<u>STATUS</u>	<u>IFIC</u>
NSS-32	U	HOL		1		See TSUM	50	2624
NSS-32	N	HOL		1		See TSUM	19	2658
NSS-32	C	HOL		1		See TSUM	50	2687
NSS-32	N	HOL		1		See TSUM	50	2710
NSS-32	A	HOL		1		See TSUM	50	2441
TOTAL:							5	

SNS – GENERAL QUERY SYSTEM 3/4

Result:

- Summary information of the notice
- Link to the TSUM (Transaction summary)
- Download of the notice in SNS format

SUMMARY INFORMATION

Satellite name	Category	Adm	Ntwk	Org	Provn	Date last modified
NSS-32	N	HOL	-	11.2	01.02.2010	

Download notice into MS/ACCESS

DETAILED INFORMATION

NOMINAL	TOLERANCE	INCLINATION	ACTIVE STATION
LONGITUDE	EAST WEST	EXCURSION	
1	0.1 0.1	0.1	-

SNS – GENERAL QUERY SYSTEM 4/4

- Transaction summary of the network

LINK TO THE REFERENCE OF THE PUBLICATIONS (SNL)

Export of the TSUM

Summary Information

Action	Status	Satellite name	Longitude	Categ	Adm Ntwk Org	Provn	Date last modified
M	50	NSS-32	1.000	N	HOL -	11.2	01.02.2010

Download notice into MS/ACCESS:

Export result of query to:

name of table/worksheet: tsum_geo

LINK TO GIMS (ON LOCAL PC)

DETAILS OF THE GROUP

To view diagrams on SNS Online: [Help System GIMS - Graphical Interference Management System](#)

ACTION	BEAM NAME	EMISS REC	MAX.ISO.GAIN	POINTING ACCURACY	RADIATION DIAGRAM	GAIN DIAGRAM	ORBIT DIAGRAM	BEAM NAME(OLD)	ANT. TYPE					
C1R	E	38.5	0.15		1	1	1							
group id	action	adm resp. band	date bringing into use	noise temp. op agcy pol. type pol. angle area mag validity class stn nat srv fdg reg date prot	publication ref no									
110694021		A	50000	17.11.2006	14	M	1	50	EC	CR	A-	29.01.2008	IFIC2	2710
	more...												IFIC1	2689
													CR/C	928
													API/A	1783
110694022		A	50000	17.11.2006	14	M	1	50	EC	CR	A-	29.01.2008	IFIC2	2710
	more...												IFIC1	2689
													CR/C	928
													API/A	1783

SNS – ADVANCE PUBLICATION QUERY

- CR DUE DATE 9.5D: 2 years from the date of reception of the API
- REGULATORY DEADLINE 11.44, 11.44.1: 7 years from the date of reception of the API. Before this date: Notification, Due diligence if needed and bringing into use
- IFIC/WIC NBR: Number of the BRIFIC in which the relevant API has been published
- Deadlines can be multiple for a network, depending of frequency bands

Summary Information									
Action	Status	Satellite name	Longitude	Category	Adm Ntwk	Org	Provn	Date last modified	
M	50	PACIFISAT C/KU-3	176.100	A	PNG	-	9.1/IB	17.09.2010	
Download notice into MS/ACCESS	2000	GO	?	TSUM	SNL-B				

DATE OF RECEIPT	FREQUENCY FROM [MHz]	FREQUENCY TO [MHz]	CLASS OF STATION	NATURE OF SERVICE	PLANNED DATE OF BRINGING INTO USE	SERVICE AREA	IFIC/WIC NBR	CR DUE DATE 9.5D	REGULATORY DEADLINE 11.44, 11.44.1
	2520.00000	2670.00000	ER	OT	03.01.2017	-	2671	26.03.2012	26.03.2017
	3400.00000	4200.00000	ER	OT	03.01.2017	-	2671	26.03.2012	26.03.2017
	5725.00000	5850.00000	EK	OT	03.01.2017	-	2671	26.03.2012	26.03.2017
	5850.00000	6725.00000	EK	OT	03.01.2017	-	2671	26.03.2012	26.03.2017
	7250.00000	7750.00000	ER	OT	03.01.2017	-	2671	26.03.2012	26.03.2017
	7900.00000	8400.00000	EK	OT	03.01.2017	-	2671	26.03.2012	26.03.2017
	10950.00000	11200.00000	ER	OT	03.01.2017	-	2671	26.03.2012	26.03.2017
	11450.00000	11700.00000	ER	OT	03.01.2017	-	2671	26.03.2012	26.03.2017
	11700.00000	12200.00000	ER	OT	03.01.2017	-	2683	17.09.2012	17.09.2017
	12200.00000	12500.00000	ER	OT	03.01.2017	-	2671	26.03.2012	26.03.2017

SNS – CREATION OF A RES49 FILING 1/5

IN SNS ONLINE, GET THE COORDINATION OR NOTIFICATION NOTICE

SPACEQUERY AND IFIC.MDB CAN BE USED INSTEAD

CREATE THE RES 49 FILING ON THE LOCAL PC

OPEN AND FILL THIS FILING IN SPACECAP

SEND THE FILE TO THE BUREAU

SNS – CREATION OF A RES49 FILING 2/5

QUERY ON SNS

RESOLUTION 49: ADMINISTRATIVE DUE DILIGENCE - SELECTION
 Enter data, select category and satellite type or specify notice identifier

Non-Planned Services Planned Services

Satellite Name :
 Notifying Administration :
 Network Organization : or Notice identifier :
 Longitude (from) : (to) :

Note that by default the "End of Regulatory Period" date is used for the selection.
 In case you wish to use "Date of Bringing into Use" window please check the radio button and indicate the values below

End of Regulatory Period Date of Bringing into use

End of Regulatory Period from: to:
 dd.mm.yyyy dd.mm.yyyy

Satellite: Geostationary: Nongeostationary: Both:
 Notification reason: Coordination Notification C and N

RESULT LIST TO SELECT THE NOTICE ON WHICH THE DUE DILIGENCE WILL BE BASED

SATELLITE NAME	CATEGORY	ADM	NTWK	LONGITUDE	DATE OF PROTECTION	BR IFIC/WIC	BR IFIC/WIC DATE	STATUS
USGOVSAT-8	C	USA		-12	02.03.2011	2555	18.10.2005	50
USGOVSAT-8	N	USA		-12	02.03.2011	2716	03.04.2012	50
TOTAL:								2

SNS – CREATION OF A RES49 FILING 3/5

- Summary information of the notice
- For each frequency bands, indication if the due diligence information has been received
- A RES49 filing will be created on the local PC

Summary Information

Action	Status	Satellite name	Longitude	Category	Adm	Ntwk	Org	Provn	Date last modified
M	50	USGOVSAT-8	-12.000	N	USA	-	11.2	26.09.2011	

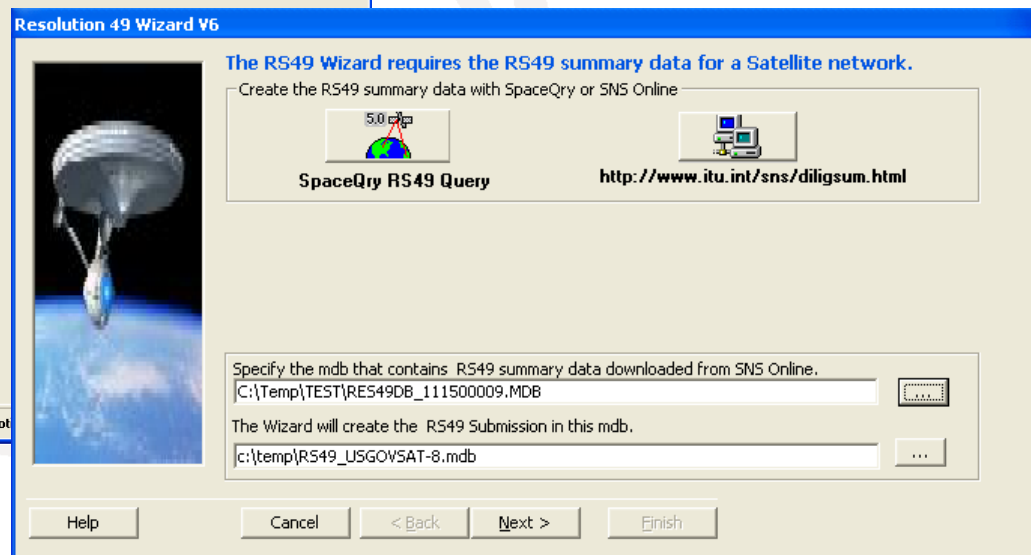
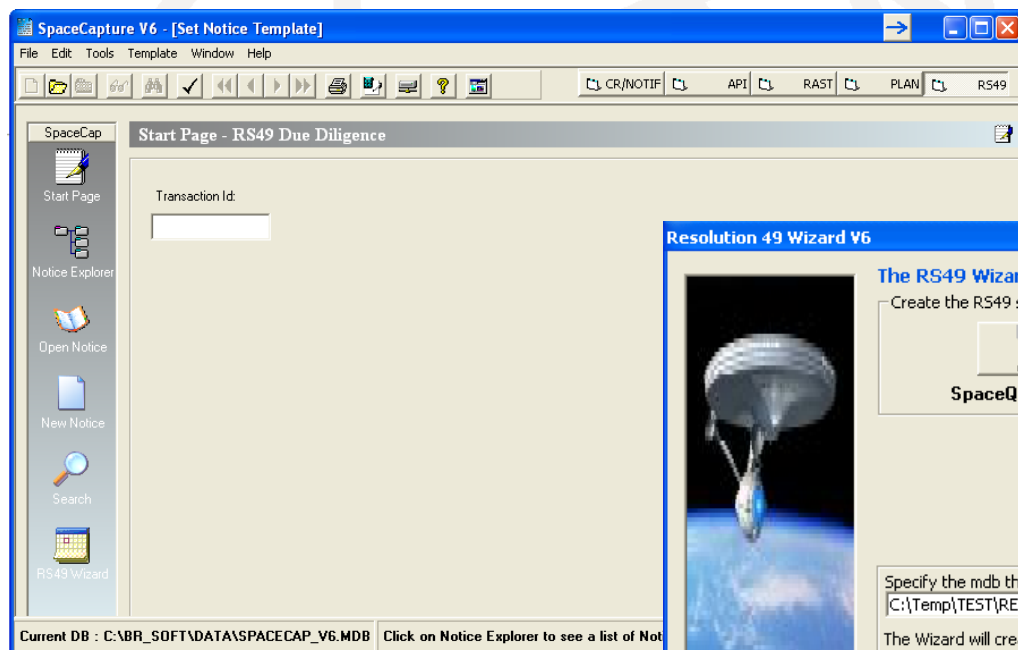
Download notice into MS/ACCESS

Frequency bands of notification filing 111500009 not covered by Resolution 49 filing

DBIU	DATE OF PROTECTION	FREQ. BAND (MHz)	BR IFIC	BR IFIC DATE	RES49 DATE OF RECEIPT	CREATE RES49 DATA FOR NOTICE: 111500009
25.06.2010	19.01.2011	1805.76400 - 1809.76400	2701	23.08.2011	band not covered	<input type="button" value="CreateFiling"/> <input style="background-color: #ccc;" type="button" value="?"/>
25.06.2010	19.01.2011	1821.77900 - 1825.77900	2701	23.08.2011	band not covered	
25.06.2010	19.01.2011	2255.00000 - 2260.00000	2701	23.08.2011	band not covered	
25.06.2010	19.01.2011	2275.00000 - 2280.00000	2701	23.08.2011	band not covered	
25.06.2010	19.01.2011	7250.00000 - 7750.00000	2701	23.08.2011	band not covered	
25.06.2010	19.01.2011	7900.00000 - 8400.00000	2701	23.08.2011	band not covered	
25.06.2010	19.01.2011	20200.00000 - 21200.00000	2701	23.08.2011	band not covered	
25.06.2010	19.01.2011	30000.00000 - 31000.00000	2701	23.08.2011	band not covered	

SNS – CREATION OF A RES49 FILING 4/5

- In SpaceCap, using the RES49 wizard
- A RES49 filing will be created on the local PC



SNS – CREATION OF A RES49 FILING 5/5

- Complete the different fields
- Select the frequency ranges for which you wish to submit the RES49
- The created RES49 filing can be sent to the Bureau

Resolution 49 Wizard V6 - Introduction
The Resolution 49 Wizard will help you prepare an electronic submission of Resolution 49 information for the selected network.

Resolution 49 Wizard V6 - SpaceCraft Manufacturer
Enter the Spacecraft Manufacturer information
BR41 Commercial Name of the Satellite:
Spacecraft Manufacturer
BR30 Name of the Spacecraft Manufacturer

Resolution 49 Wizard V6 - Launch Services Provider
Enter the Launch Services Provider information
Launch Services Provider
BR34 Name of the Launch Vehicle Provider
BR36 Date of Execution of the Contract
BR38 Name of the Launch Facility
BR39 Country/Location
Longitude Degrees

Resolution 49 Wizard V6 - Frequency Ranges Subject to Resolution 49

Frequency Range - R549 not Submitted	Date Inuse	Date Protection Eff
<input type="checkbox"/> 01805.76000 to 01809.76000	25.06.2010	19.01.2011
<input type="checkbox"/> 01821.78000 to 01825.78000		
<input type="checkbox"/> 07250.00000 to 07750.00000		
<input type="checkbox"/> 07900.00000 to 08400.00000		
<input type="checkbox"/> 20200.00000 to 21200.00000		
<input type="checkbox"/> 30000.00000 to 31000.00000		

Select all Frequency Ranges for which you wish to submit Administrative Due Diligence (Resolution 49).
Note: In case of frequency bands used by a Space Operation Service. If the Space Operation uses its own frequency allocation, Due Diligence is not required.
Warning! The frequency ranges subject to Res49 which are not submitted for Res49 will be deleted from the corresponding notice when the Date of Bringing into Use has passed.

Buttons: Help, Cancel, < Back, Next >, Finish, Clear Selection, Select All

QUESTIONS / CONTACT

<http://www.itu.int/itu-r/go/space-contact/en>

spr@itu.int