



# NGA mapping in the Czech Republic

**Marek Ebert**  
**Czech Telecommunication  
Office (CTO)**

# Why....

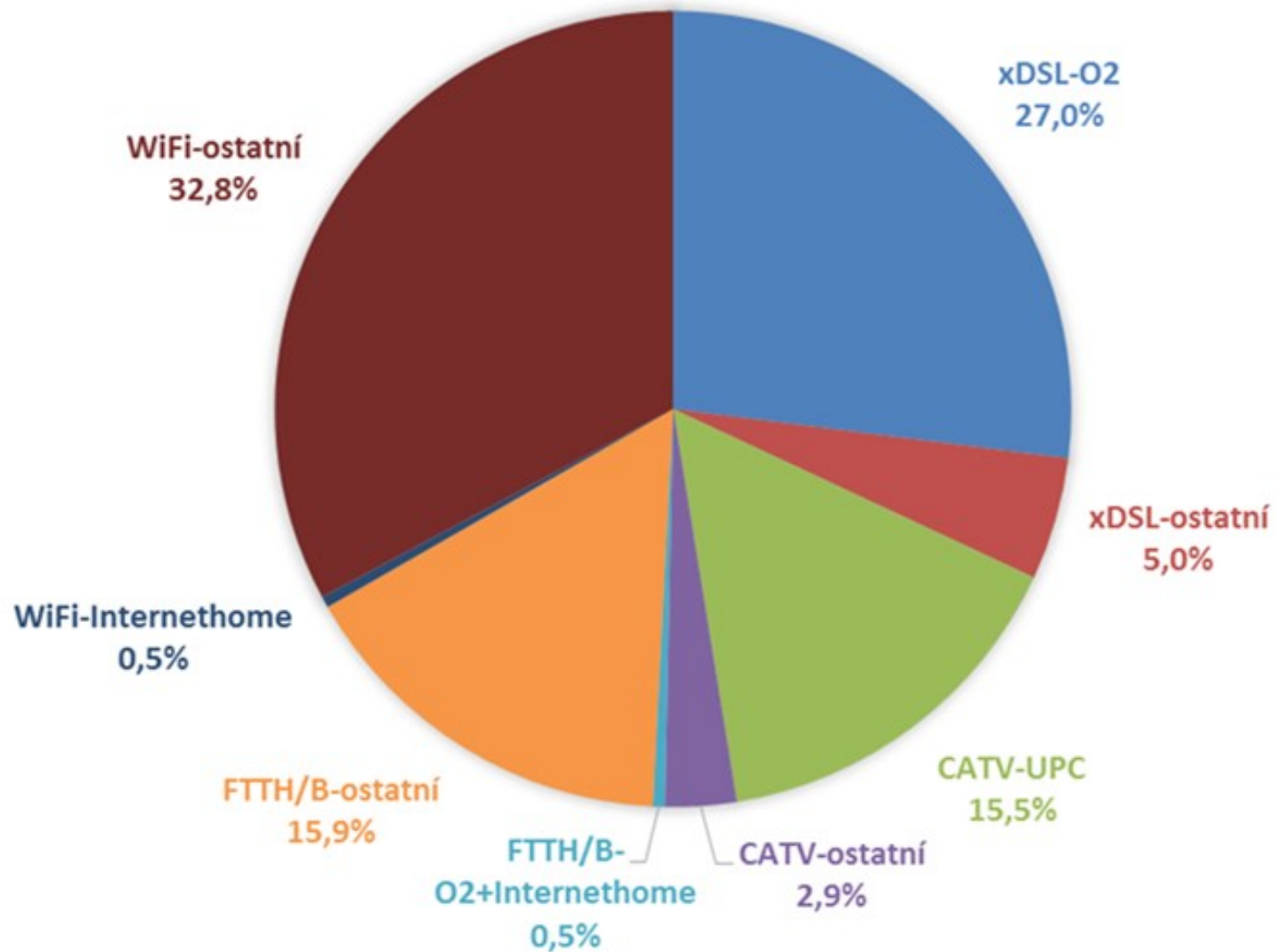


## Czech broadband market

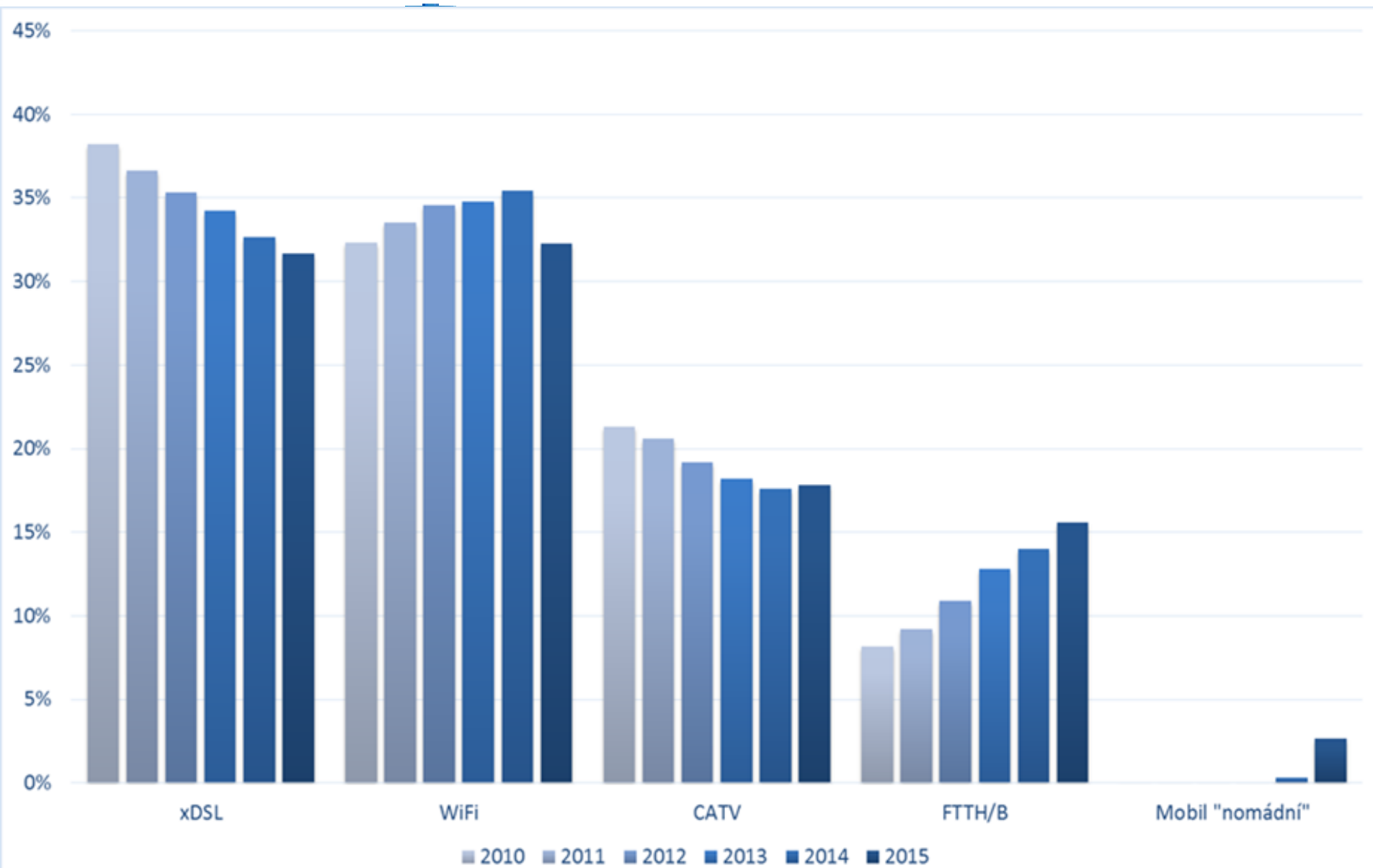
Short description of current situation:

- Infrastructure competition (next slide).
- But NGA isn't everywhere (white spaces).
- Big market share of alternative technology solution (esp. xDSL, Wi-Fi, CATV).
- High quality access (FTTx) is not developed as we would need.

# Market share of BB infrastructure (2015)



# BB infrastructure market share evolution



# NGA State aid (subsidy) program

## Why?

- The Czech government approved the National BB Strategy „Digital Czech v.2.0“ in 2012.
- It's in line with EU Digital agenda.
- Main goals for 2020
  - 30 Mbit/s BB access for all citizens,
  - Min. 50% households will have more than 100 Mbit/s.

# First NGA mapping (2013/2014)

**First indications of the white space for the option of state aid program.**

- We expected to use part of 4G auction income (1 bil. CZK / 37 mil. EUR)
- Ad-hoc data collections / no regular NGA reporting.
- Two various maps
  - Ver. 2013, parameter: 50% NGA cover
  - ed households,
  - Ver. 2014, parameter: is there NGA access Y/N.

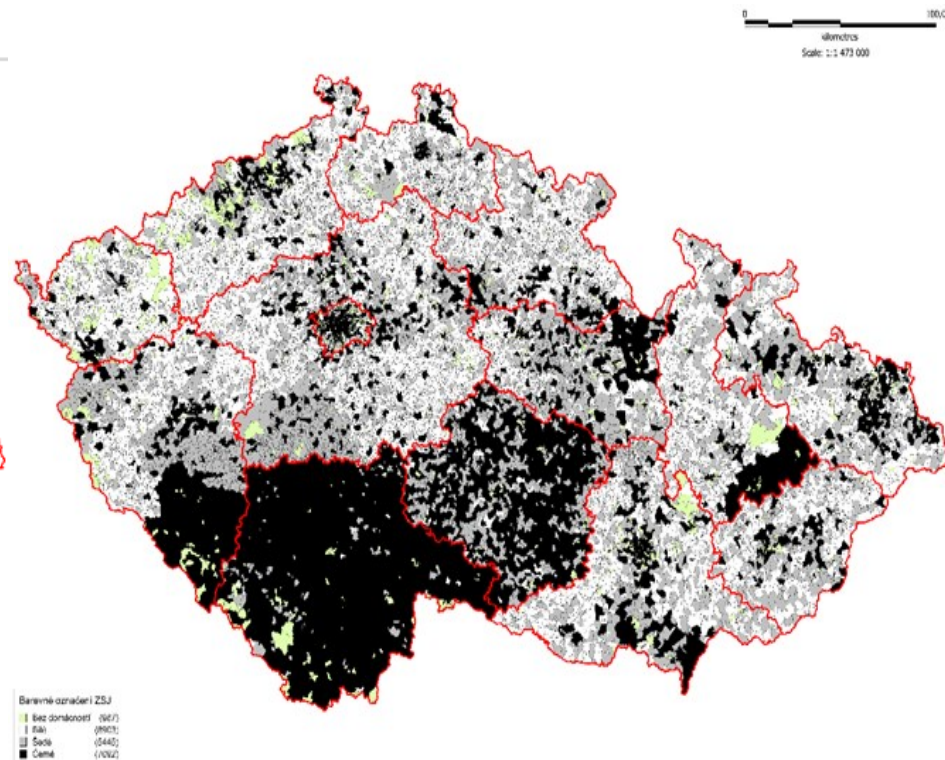
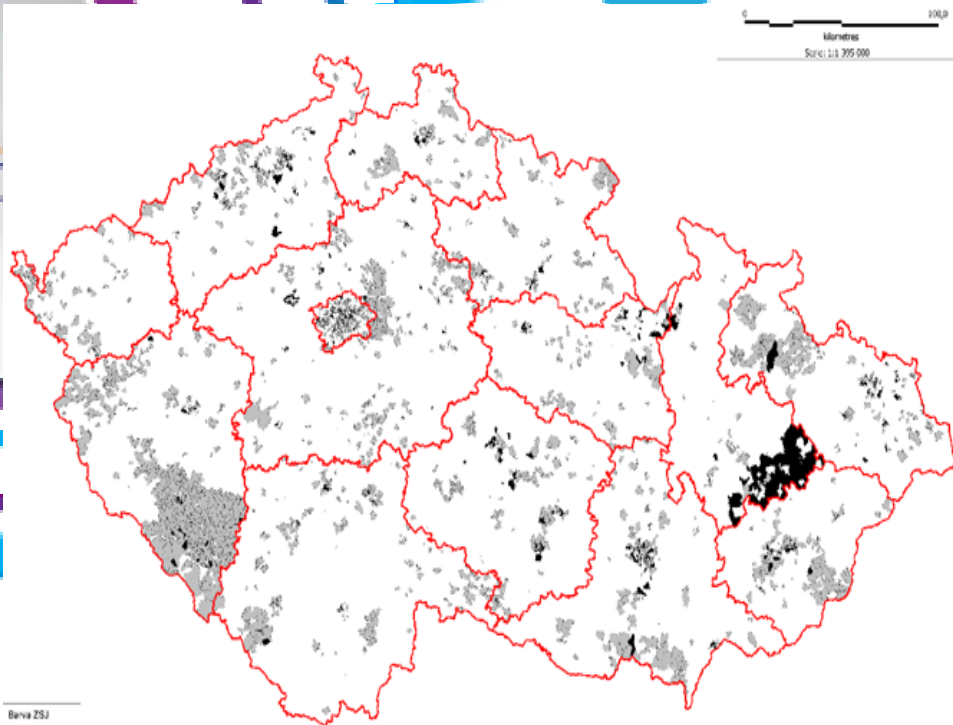
# First NGA mapping (2013/2014)

## Map 2013

- 18445 white spaces
- 3352 grey spaces
- 630 black spaces

## Map 2014

- 9762 white spaces
- 5561 grey spaces
- 7104 black spaces





# Second NGA mapping (2016)

## For NGN National plan:

- Connected with preparation of the National NGA development program.
- Responsibility for program – Ministry of Industry and Trade (Ministry).
- With EU Broadband development financing program.
- 14 bil. CZK/ aprox. 520 mil. EUR.

**Indication of potential areas for financing**



# Second NGA mapping (2016)

## Procedure

- Electronic Data (Collections) System (ESD)
- All operators regularly provide data (as for market analyzing, international reporting etc.)
- CTO's portal for authorized users.
- Basic data check even before hand-out.
- Via e-form

# Data collection – eForm

- Detail for each Address points (ADP)
  - ADM means buildings, houses etc,
  - more than 2,9 mil. ADP in the Czech Republic.
- Technology neutrality principle applied.
- We mapped current situation and plan for next 3 following years.
- 3 levels of BB access information:
  - Basic broadband access (up to 30 Mbit/s download),
  - Access 30+ Mbit/s.
  - More than 100 Mbit/s.

# Geographic NGA data collection

Export CSV (jen příloha)

Datová věta

Šablona CSV (pro import)

Current status

3 year plan

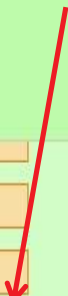
Návodné pokyny



Geografické údaje o přístupu k síti Internet prostřednictvím optických vláken FTTB (kombinace optické sítě a sítě Ethernet)

Číslo řádku	PŘÍSTUPY (Mbit/s)	FTTB	FTTB	FTTB	FTTB	FTTB	FTTB	FTTB
a	b	c	d	e	f	g	h	i
celkem	1	30 946	28 981	0	0	31 545	0	31 545
Vimperk Mírová 403	96 [00835453]	2	2	0	0	2	0	2
Vimperk Mírová 422	97 [00835587]	2	2	0	0	2	0	2
Vimperk Mírová 426	98 [00835625]	2	1	0	0	2	0	2
Vimperk Mírová 454	99 [00835897]	1	1	0	0	1	0	1
Vimperk Mírová 455	100 [00835901]	0	0	0	0	1	0	1
Vimperk Mírová 456	101 [00835919]	1	1	0	0	1	0	1
Vimperk Mírová 457	102 [00835927]	2	2	0	0	2	0	2
Vimperk Mírová 457	103 [00835935]	1	1	0	0	1	0	1

Adress point



Zobrazení dat v datovém skladu

Uložit data

# Data evaluation

**Based on agreement with Sector and Ministry.**

- Data of ADP aggregated to the Basic Settlement Unit (BSU).

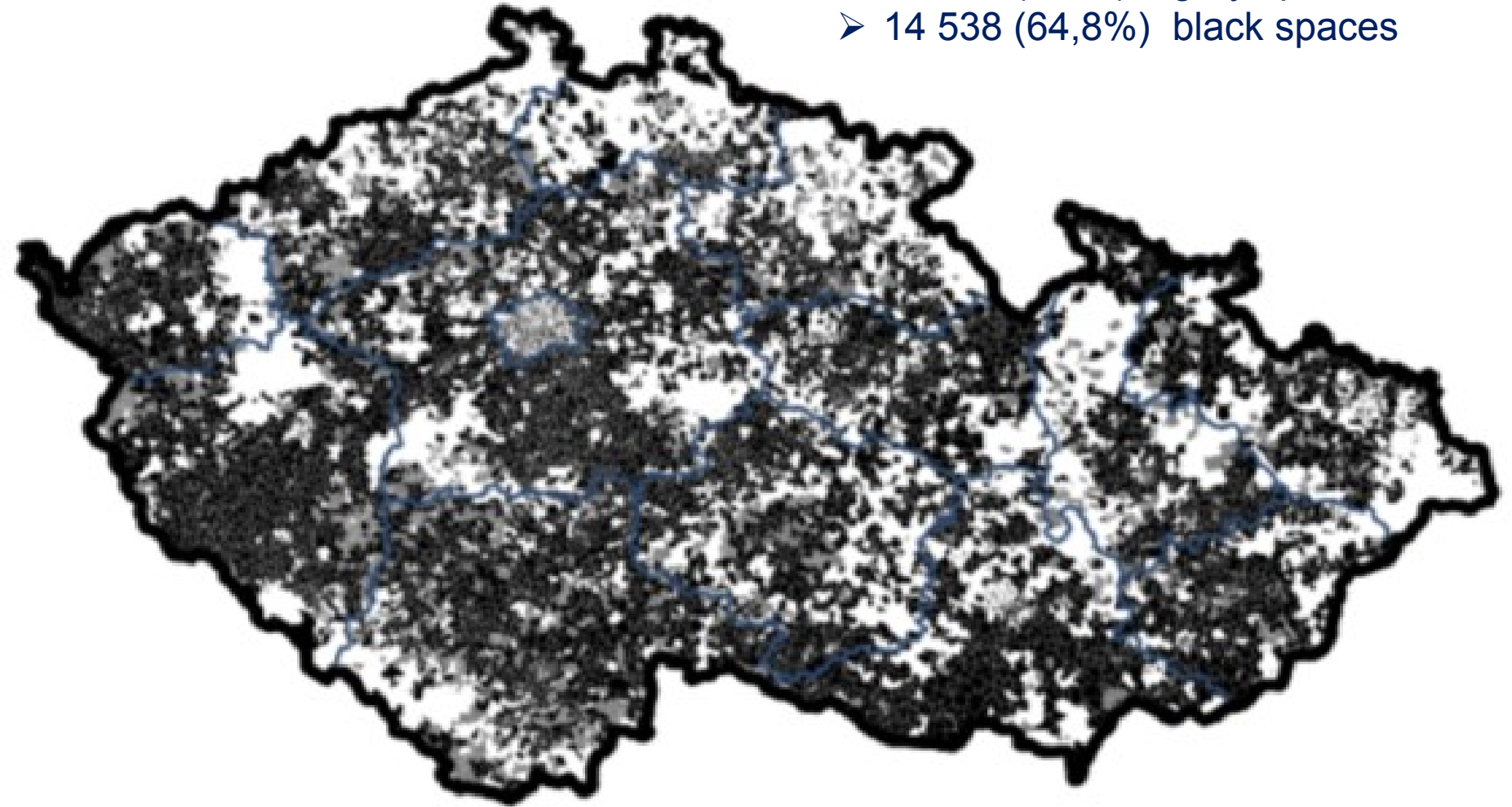
**For the BSU colours important:**

- How many NGA covered ADP in BSU
  - „White“ BSU up-to 50% covered ADP.
- How many NGA operators in each ADP
  - „Grey“ BSU: more than 50% covered ADP and one operator there,
  - „Black“ BSU: more than 50% covered ADP and more than 2 operators there.
- 3-year plans included.

# The result – NGA map 2016

**22 439 BSU in the Czech Republic:**

- 5 663 (25,2%) white spaces
- 2 238 (10 %) grey spaces
- 14 538 (64,8%) black spaces



# The detail information in the public consultation

The screenshot shows a web browser window with the URL <http://www.verejnakonzultace.cz/Mapa>. The page displays a map of the region with a data popup for a specific area. The popup contains the following information:

ZSJ Id:	33669
Obec:	Dubnice
ORP:	Česká Lípa
Kraj:	Liberecký kraj
<hr/>	
Počet provozovatelů:	1
Počet disponibilních přípojek:	101
Počet obyvatel:	641
Celkem adresních míst:	281
Pokrytých adresních míst:	93
Procento pokrytí:	33,10
Počet obydlených bytů:	185

Below the table is a link: [Zaslat připomínku](#)

Annotations on the right side of the image:

- Red arrow pointing to the ZSJ Id field: **BSU „Dubnice“ (white space)**
- Red arrow pointing to the number '1' in the 'Počet provozovatelů' row: **One operator**
- Red arrow pointing to the '33,10' value in the 'Procento pokrytí' row: **33,10 % ADP covered NGA**

On the left side of the map, there are several filter controls:

- Zvolte mapové vrstvy
- Všechny technologie
- Současnost + výhled
- NGA 30-100 Mbit/s
- Janov

On the right side of the page, there is a navigation menu with the following items:

- Úvod
- Návod
- Mapa
- Podání připomínky
- Příloha

# What's important to do ...

## To be transparent:

- i.e. workshop with sector, public consultation, etc.

## To have close cooperation

- with the Ministry and Sector too,
- Working group for mapping procedure (Nov. 2015 – Jan 2016).

## Sufficient time for preparation

- Summer 2015, first workshop on the NGA data collection proposal,
- Autumn 2015, second workshop, eForm finalization,
- 1-3/2016, period for data transmission,
- 4-7/2016, data verifications,
- 7/2016, NGA data set and map for the Ministry,
- 7-9/2016, public consultation.

# Next steps



- **October 2016:** the CTO will modify map on the base of public consultation results.
- **November 2016:** the Ministry will create final intervention areas for the first round of NGA financing program.
- Separate consultation (intervention areas) will start.

**In the biggining 2017 the first state aid to NGA development can be provided.**





**Thank you for your  
attention**

-

[ebert@ctu.cz](mailto:ebert@ctu.cz)