

We Are Facing A Wide Range of Public Safety Threats

Social Security



- Crime and Violence
- Terrorist Attacks
- Mass Incidents
(Protests / Riots)

Accident Disaster



- Traffic Accident
- Public Facilities Accidents
- Environment Damage

Public Health



- Infectious Diseases
(SARS, Ebola)
- Animal Epidemic (Bird Flu)
- Food Safety

Natural Disaster



- Weather Disaster
(Flood, Hurricane etc.)
- Earthquake
- Marine Disaster
(Typhoon, Tsunami etc.)

Common Features: (1) Unexpected (2) Complicated (3) Devastating

These Threats Bring Serious Challenges to Agencies

Before the Incident: Limited Early Warning



*Shanghai Stampede Accident
(31, Dec, 2014)*

- **39** dead and **49** injured
- **1M** people gathered in **3.1KM2**
- Highest density: **6-7** person/m²
- Limited risk early warning and Poor Contingency Plan

During the Incident: Lack Multi-Agency Collaboration



*Earthquake in Ya'an Sichuan, China
(20 Apr, 2013)*

- **196** dead and **11470** injured
- Un-organized volunteers blocked the road and delayed the big machines and rescue materials to enter to villages.
- The party head of the city was dismissed.

After the Incident: Poor Investigation Efficiency

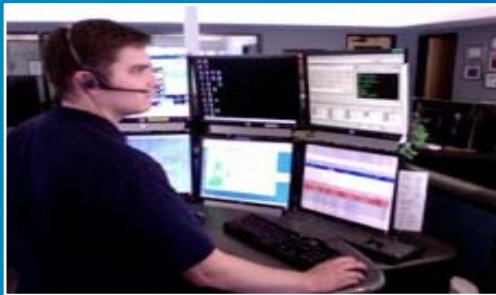


*Chinese Serial Killer Zhou Kehua
(2004-2012)*

- Shot **10** person dead in **8** years
- **1200** policemen, **7** days, **17s** key footage
- Lack of efficient search method from massive video

The Key Reason Behind Those Challenges: Unknown

Call-Taker & Dispatcher



- Where is the incident location?
- What is the real situation?
- Where are the available resources?
- How to dispatch directly to field personnel?

....

Commander



- How to get first-hand info?
- How to communicate with different agencies?
- How to make faster and smarter decision?
- How to interact with field commander?

....

Field Officers

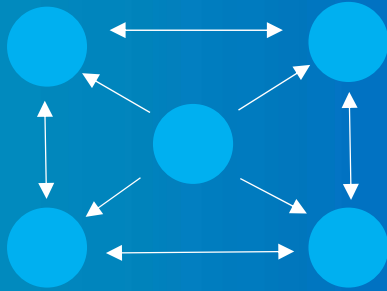


- What is the actual situation we face to?
- Where are my companions?
- How to handle such difficult case?
- How to keep command center updated?

....

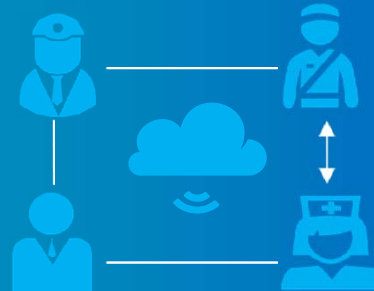
Facing Unknown, Agencies Need Better Situational Awareness Capabilities

Collective Intelligence



- Each individual can contribute information
- Multi-source combined into one single operational view.

Multi-Agency Collaboration



- Achieve greater levels of situational awareness
- Enable more accurate decision making.

Critical Video Communication



- Video contains 10+ times info content than voice
- 80% applications based-on video by 2018

Huawei Innovative ICT Help to Improve Agencies' Capabilities

Before the incident

Smart Sensing



Omni Protection

Video Prevention
Intelligent Early - Warning

During the incident

Smart Decision-Making



Rapid Response

Multi-Agency Collaboration
Empower the Field

After the incident

Smart Clue Analysing



Efficient Case-Solving

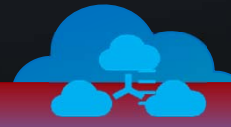
Multi-dimensional intelligence
Intelligent Analysis



Wired & Wireless



1st Visible Trunking

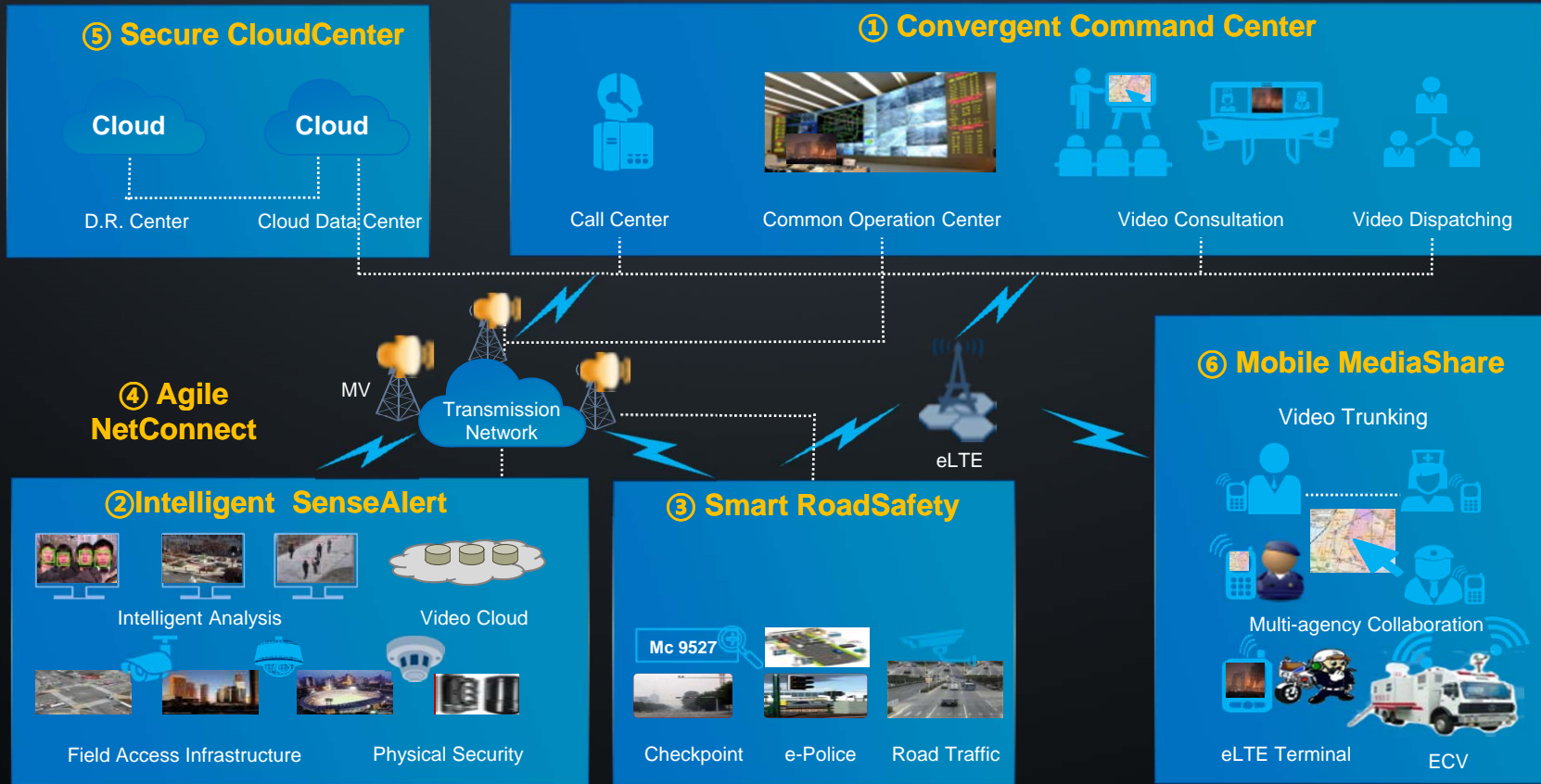


Cloud Data Center



Big Data Platform


Huawei Safe City Solution Summary: Let Video Play The Key Role




The Evolution to the Next Generation LTE Technology

Industry Networks


Industry network followed operators' technologies; & always one generation behind until 4G LTE...



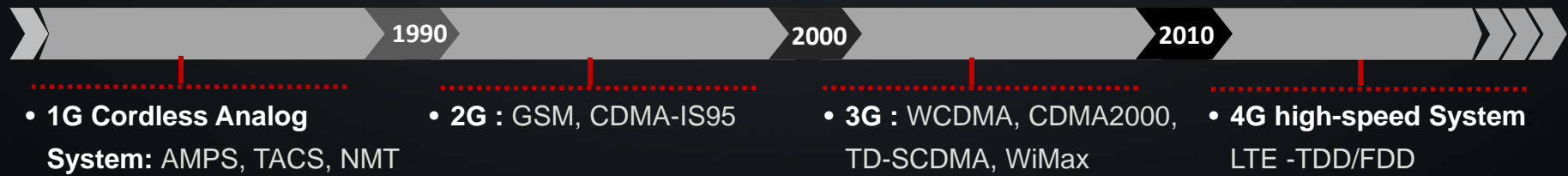
- **Service:** Voice Push-to-Talk only
- **Analogue Trunked Radios:** MPT1327



- **Service:** Digital voice trunking, SMS Text
- **Narrow-band Digital Trunking :** TETRA, P25, iDen



- **Service:** Trunking voice + video, high-speed data access, industrial applications, etc...
- **Broadband Trunking?**



Public Operator Networks

Introducing the Huawei eLTE Solution



4G LTE Technology

Based on 3GPP LTE, with Optimized signaling protocols, 1st to realize trunking voice over LTE

End-to-End Solution

including network equipment, chipsets, terminal devices and upper layer applications.

All-in-One Services

from multimedia trunking dispatch to broadband data.

Network Equipment

- Core Network System
- Base Station
- Multimedia Dispatch Server



eLTE

multi-tasking, simultaneous services



User Equipment

- Multimedia Trunking Handset
- Wireless Data Module CPE
- Embedded Module



During the Event : Critical Video Communication, Acting in Real-time



- World **1st LTE broadband trunking** system
- Critical Video **“Triggered by One, Sensed by All”**
- **Commanding moving forward** to the field
- Real-time situation, real-time decision, acting in real-time



With Best Partners, Bring Best Solutions

Partners

eSDK Open Platform

Wireless	Network and security	Cloud data center	Surveillance, collaboration & command	Equipment room and power supply

One-Stop ICT

Huawei Has Set Up Matured System to Support Partners

eSDK



- Open software /hardware capability
- Easily integrated
- Support for forums /hotlines /emails

Open Lab



- Interconnection /interoperability test: **150**
- Joint solution integration verification: **52**

Joint Innovation



- Joint innovation center: **31**

Co-Marketing



- Joint Exhibition Hall
- Joint Collateral
- Joint Event
- Joint Digital Marketing

ISV certification



- ISV certification: **200+**
- Trained technical engineers: **1000+**

Huawei Global Experience Envision Your Smarter Safe City



Huawei safe city solutions have served
100+ cities, 30+ countries.

THANK YOU

Copyright©2015 Huawei Technologies Co., Ltd. All Rights Reserved.

The information in this document may contain predictive statements including, without limitation, statements regarding the future financial and operating results, future product portfolio, new technology, etc. There are a number of factors that could cause actual results and developments to differ materially from those expressed or implied in the predictive statements. Therefore, such information is provided for reference purpose only and constitutes neither an offer nor an acceptance. Huawei may change the information at any time without notice.

