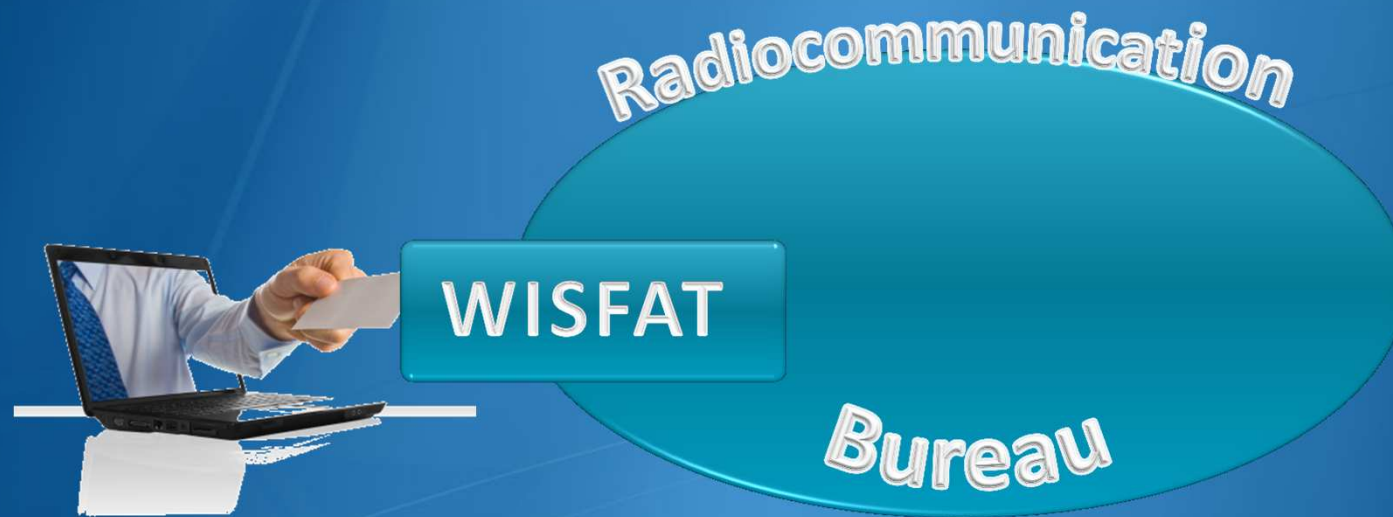




Terrestrial Notification Process



Sujiva Pinnagoda

BR/TSD/TPR

World Radiocommunication Seminar, Geneva

6 – 10 December 2010

Presentation

- Why notify to the Radiocommunication Bureau?
- Which frequency assignments are to be notified?
- When to notify to the BR?
- How to notify the BR?
- The outcome of the notification
- Final Remarks



Why notify to the BR?

- ITU members are bound to apply the provisions of the Radio Regulations
- International rights and obligations of administrations shall depend on their recording in the Master Register or their conformity with a Plan (RR8.1)
- Recorded assignments with favorable findings have the right for international recognition (RR8.3)



Which assignments are to be notified?

- All assignments that are (RR11.3 – 11.8)
 - Capable of causing harmful interference
 - Used for International radiocommunication
 - Subject to world or regional Plans
 - Subject to the Article 9 coordination procedure
 - Requesting International recognition
 - For information only (RR8.4)



Cases NOT to be notified

- In the amateur service
- Ship-to-ship communication
- Common frequencies



When to notify to the BR?

- When an assignment that meets the conditions described before is to be put in operation
 - Send a notification to propose :
 - Addition(s) to the Master Register or to Plans
 - Modification(s) to any data item of an existing assignment(s)
 - Suppression of frequency assignment(s) which is/are no longer in use



How to notify to the BR?

- A notice for each frequency and for each station
- Except if the same frequency is re-used many times
 - A single notice giving the typical characteristics of one station of the network (RR11.7)
 - Does not apply to all services or to all frequency bands (RR11.18 – 11.21B)



Identification of the Notice Type

- **Broadcasting services**

- Frequency band
 - Sound broadcasting in Low frequency (155 – 285 kHz) and Medium frequency (525 – 1705 kHz) – LFMF
 - Sound and television broadcasting in VHF and UHF bands - FMTV
- Geographical zone or Region
- Applicable provisions of RR or Regional Agreements : Fragment
- Class of station
- Action requested by the notice

- **Fixed and mobile services**

- Fragment
- Type or class of station or Plan



BS : Identification of Notice type

- Standard notices : all administrative and technical data items
- Short notices : specific actions
 - Modify the unique identifier of the assignment (TB1, TB6)
 - Notify under Art.11 an assignment with all technical characteristics as in the Plan (TB2, TB7)
 - Request for publication in Part B (TB3, TB8)
 - Update coordination information of a notice under treatment (TB4)
 - Suppress frequency assignment or withdraw a notice under treatment (TB5)



LFMF: Identification of Notice type

Fragment	Region	ACTION					SUPPRESS WITHDRAW
		ADD MODIFY	ADMINID	CONFORM	PARTB		
GE75	R1, R3	T03	TB6	TB7	TB8	TB9	
RJ81	R2	T04	TB6	TB7	TB8	TB9	
RJ88	R2	T04	TB6	TB7	TB8	TB9	
Art11	R1, R3	T03				TB9	
Art11	R2	T04				TB9	



FMTV: Identification of Notice type

Fragment	Region	ACTION CS	ACTION					
			ADD MODIFY	ADMINID	CONFORM	PARTB	COORD- INATION	SUPPRESS WITHDRAW
GE06A	GE06*	BT	G02		TB2	TB3		TB5
GE06D	GE06*	BC	GS1		TB2	TB3		TB5
GE06D	GE06*	BC	GS2			TB3		TB5
GE06D	GE06*	BT	GT1		TB2	TB3		TB5
GE06D	GE06*	BT	GT2			TB3		TB5
GE84	R1	BC	T01	TB1	TB2	TB3	TB4	TB5
GE89	ABA	BT	T02	TB1	TB2	TB3	TB4	TB5
ST61	EBA	BT	T02	TB1	TB2	TB3	TB4	TB5
Art11	GE06*	BC	GS1					TB5
Art11	GE06*	BT	GT1					TB5
Art11	XAA - GE06*	BC	T01					TB5
Art11	XAA - GE06*	BT	T02					TB5

* the area and frequency bands governed by the GE06 Regional Agreement

FXM: Identification of Notice type

Type/Class of station or Plan	FX (TX)	ALL TX except FX	ALL RX	Typical Stations	Allotment AP25	Allotment AP26	Allotment AP27	GE85 Plans	Adaptive Systems
Fragment									
Art11	T11	T12	T13	T14	T12	T12	T12	T12	T17
Art11*	G11	G12	G13	G14					
GE06L	G11	G12	G13	G14					
APP 25					T15				
GE85M Plan								T16	
GE85N Plan								T16	

* the area and frequency bands governed by the GE06 Regional Agreement



Electronic File Format only

```
<HEAD>
t_adm=HNG
</HEAD>
```

```
<NOTICE>
t_ <NOTICE>
t_ t_n_ <NOTICE>
t_ t_d_ t_notice_type=T12
t_ t_fr_ t_d_adm_ntc=2010-11-26
t_ t_fr_ t_fragment=NTFD_RR
t_ t_st_ t_freq_assgn=128.1500
t_ t_pi_ t_station_id=AIR AMBULANCE
t_ t_ar_ t_prov=RR11.2
t_ t_ct_ t_adm_ref_id=SF22125
t_ t_si_ t_ctry=HNG
t_ t_d_ t_site_name=BUDAORS
t_ t_is_ t_d_inuse=2010-08-01
t_ t_n_ t_is_resub=False
t_ t_ar_ t_nat_srv=OT
t_ t_op_ t_addr_code=A
t_ t_ar_ t_op_agcy=006
t_ t_st_ t_action=ADD
t_ t_er_ t_stn_cls=FD
t_ t_br_ t_emi_cls=A3EJN
t_ t_lo_ t_bdwidth_cde=6K00
t_ t_la_ t_long=+0185956
t_ t_op_ t_lat=+465959
t_ t_op_ t_op_hh_fr=00:00
t_ t_op_ t_op_hh_to=24:00
```

```
<ANTENNA>
t_ <ANTENNA>
t_ t_ <ANTENNA>
t_ t_ t_pwr_xyz=Z
t_ t_ t_pwr_ant=7
t_ t_ t_pwr_dbw=4.8
t_ t_ t_pwr_eiv=E
t_ t_ t_ant_dir=ND
t_ t_ <RX_STATION>
t_ t_ t_geo_type=CIRCLE
t_ t_ t_long=+0185956
t_ t_ t_lat=+465959
t_ t_ t_radius=300
t_ t_ </RX_STATION>
t_ t_ </ANTENNA>
t_ t_ </NOTICE>
```


```
<TAIL>
t_num_notices=3
</TAIL>
```

The electronic notice file is a sequential, record-oriented, which follows the general outline of an SGML (Standard Generalized Mark-up Language) file, with a tagging scheme.



Electronic File Format

<http://www.itu.int/ITU-R/go/terrestrial-notice/en>



Submission of frequency assignments/allotments to stations of terrestrial services

	Article 11 of the RR and Agreements (other than GE06)	GE06 Agreement
Fixed and Mobile services		
General guidelines	FMN-guide	OS-guide (see Note 1)
Description of data (see Note 2)	T11 T12 T13 T14	
Sample electronic Files	T11 T12 T13 T14	G11 G12 G13 G14
Broadcasting service		
Circular Letters	CR/120 CR/125	CR/262
General guidelines		BS-guide (see Note 1)
Format of electronic notice		G51 G52 G11 G12 G13 G14 G15 G16 G17 G18 G19 G20 G21 G22 G23 G24 G25 G26 G27 G28 G29 G30 G31 G32 G33 G34 G35 G36 G37 G38 G39 G40 G41 G42 G43 G44 G45 G46 G47 G48 G49 G50 G51 G52 G53 G54 G55 G56 G57 G58 G59 G60 G61 G62 G63 G64 G65 G66 G67 G68 G69 G70 G71 G72 G73 G74 G75 G76 G77 G78 G79 G80 G81 G82 G83 G84 G85 G86 G87 G88 G89 G90 G91 G92 G93 G94 G95 G96 G97 G98 G99 G100
Description of data	T01 T02 T03 T04 T05 T06 T07 T08 T09 T10 T11 T12 T13 T14 T15 T16 T17 T18 T19 T20 T21 T22 T23 T24 T25 T26 T27 T28 T29 T30 T31 T32 T33 T34 T35 T36 T37 T38 T39 T40 T41 T42 T43 T44 T45 T46 T47 T48 T49 T50 T51 T52 T53 T54 T55 T56 T57 T58 T59 T60 T61 T62 T63 T64 T65 T66 T67 T68 T69 T70 T71 T72 T73 T74 T75 T76 T77 T78 T79 T80 T81 T82 T83 T84 T85 T86 T87 T88 T89 T90 T91 T92 T93 T94 T95 T96 T97 T98 T99 T100	G51 G52 G11 G12 G13 G14 G15 G16 G17 G18 G19 G20 G21 G22 G23 G24 G25 G26 G27 G28 G29 G30 G31 G32 G33 G34 G35 G36 G37 G38 G39 G40 G41 G42 G43 G44 G45 G46 G47 G48 G49 G50 G51 G52 G53 G54 G55 G56 G57 G58 G59 G60 G61 G62 G63 G64 G65 G66 G67 G68 G69 G70 G71 G72 G73 G74 G75 G76 G77 G78 G79 G80 G81 G82 G83 G84 G85 G86 G87 G88 G89 G90 G91 G92 G93 G94 G95 G96 G97 G98 G99 G100
Sample electronic Files	T01 T02 T03 T04 T05 T06 T07 T08 T09 T10 T11 T12 T13 T14 T15 T16 T17 T18 T19 T20 T21 T22 T23 T24 T25 T26 T27 T28 T29 T30 T31 T32 T33 T34 T35 T36 T37 T38 T39 T40 T41 T42 T43 T44 T45 T46 T47 T48 T49 T50 T51 T52 T53 T54 T55 T56 T57 T58 T59 T60 T61 T62 T63 T64 T65 T66 T67 T68 T69 T70 T71 T72 T73 T74 T75 T76 T77 T78 T79 T80 T81 T82 T83 T84 T85 T86 T87 T88 T89 T90 T91 T92 T93 T94 T95 T96 T97 T98 T99 T100	G51 G52 G11 G12 G13 G14 G15 G16 G17 G18 G19 G20 G21 G22 G23 G24 G25 G26 G27 G28 G29 G30 G31 G32 G33 G34 G35 G36 G37 G38 G39 G40 G41 G42 G43 G44 G45 G46 G47 G48 G49 G50 G51 G52 G53 G54 G55 G56 G57 G58 G59 G60 G61 G62 G63 G64 G65 G66 G67 G68 G69 G70 G71 G72 G73 G74 G75 G76 G77 G78 G79 G80 G81 G82 G83 G84 G85 G86 G87 G88 G89 G90 G91 G92 G93 G94 G95 G96 G97 G98 G99 G100
HFBC	ITU-R HFBC Planning Software	

Note 1: The guidelines for GE06 submissions are also available in Arabic and Russian.
Note 2: This paper notices are used for illustration only. The submission of notices for terrestrial services to the Radiocommunication Bureau shall be in electronic format only.

Top - Feedback - Contact us - Copyright © ITU 2010 All Rights Reserved
Contact for this page : ITU-R, Web Coordinator
Updated : 2010-06-15

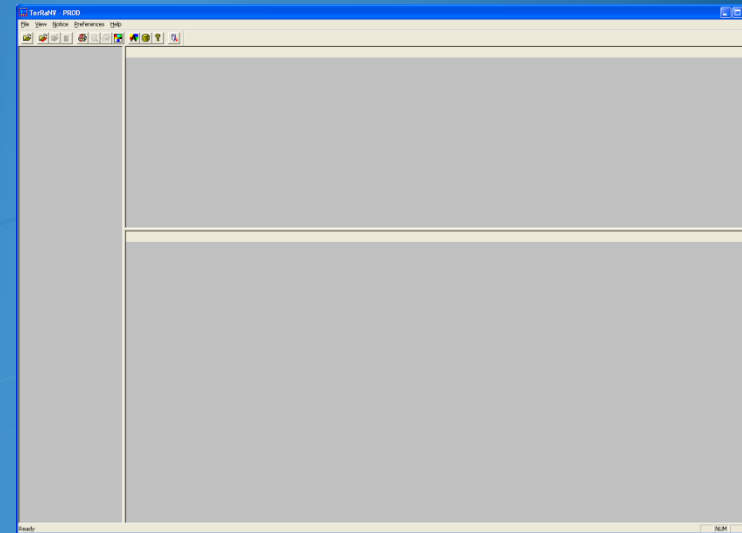
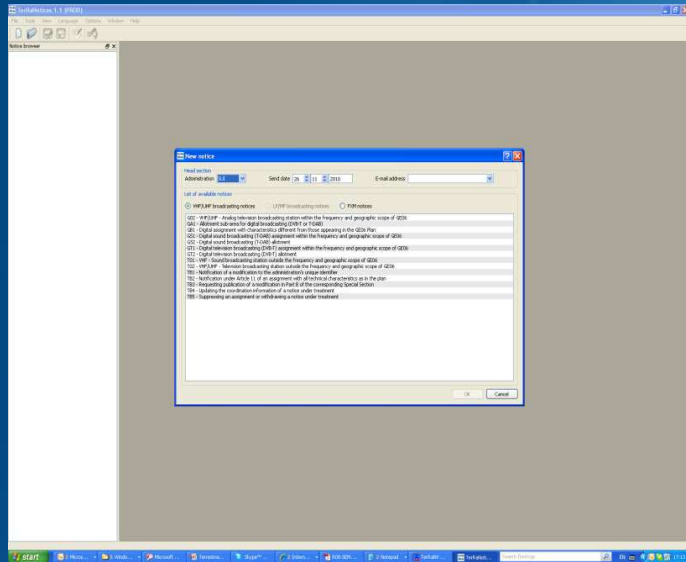
Additional information and descriptions can be found in appropriate guidelines on this web page as well as samples of different notice types



Electronic notice file Creation and Validation

TerRaNotices

TerRaNV



Notice Validation



How to submit to the BR

- WISFAT

- Secured

- Only registered notifiers selected by their administration

- Reliable

- An acknowledgment Report is sent immediately to the notifier

- Access to WISFAT

<http://www.itu.int/ITU-R/go/wisfat/en>



Outcome of the Notification

WISFAT

Validation

**First
Publication**

Examination

**Final
Publication**



Final Remarks

- Notification has two aspects
 - Administration's obligation
 - Administration's claim for their international rights
- Value of the Master Register depends on the number and the exactitude of the data submitted by each administration
- Very important to consult the BR IFIC



Terrestrial Notification

Workshop

- Fill and validate different notice types
- Submit via WISFAT