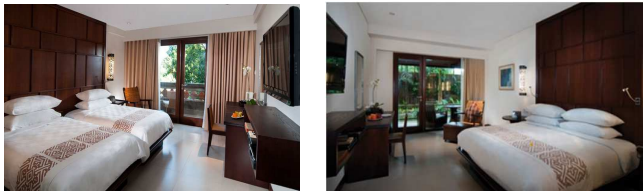
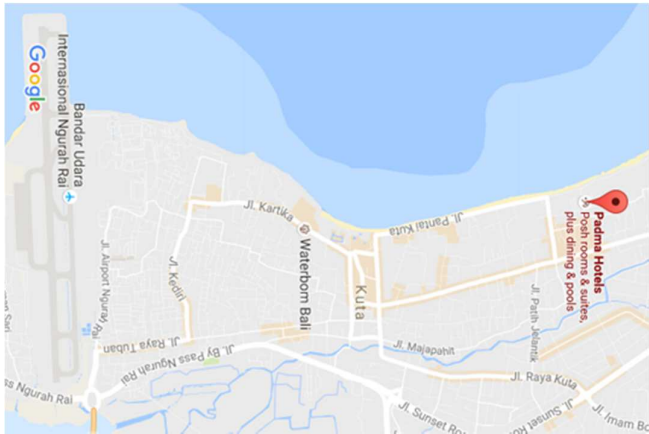
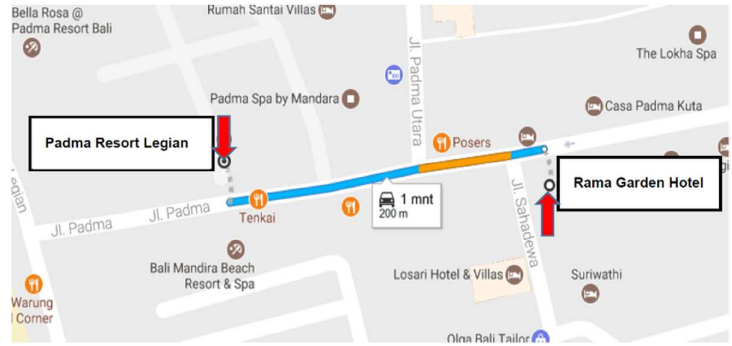
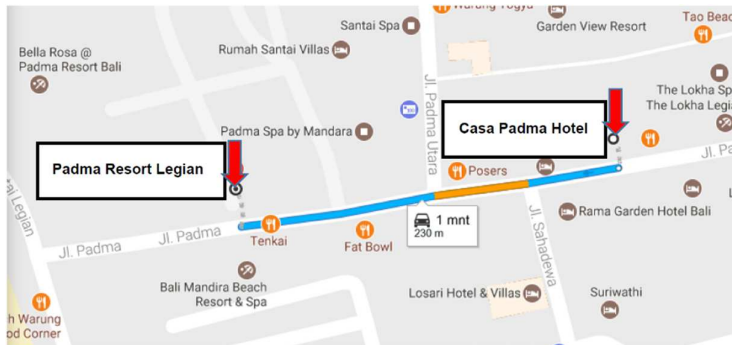


Accommodation

Official accommodation	Room type	Room rate
<p>Padma Resort Legian (venue) Jl. Padma No. 1 Legian 80361 PO Box 1107 TBB Bali, Indonesia</p> <p>Tel.: +62 361 752 111 Fax.: +62 361 752 140 Website: www.padmaresortlegian.com E-mail: reservation.legian@padmahotels.com</p> <p><i>Free return airport transfers (for minimum two consecutive nights)</i></p>  <p>Rate includes:</p> <ul style="list-style-type: none"> ▪ Daily International Buffet Breakfast ▪ Free Wi-Fi connection ▪ Welcome drink and cold face-towel upon arrival ▪ Welcome fruits and flowers in the room upon arrival ▪ In-room tea and coffee making facilities ▪ Daily replenished in-room mineral water <p>Location:</p> <p>Only 25 minutes-drive from Ngurah Rai International Airport, a 10-minute drive to Kuta Beach, including Legian Beach and Beachwalk Kuta Mall, a 5-minute walk to local shops and boutiques, and a 10-minute walk to lively evening entertainment and fine dining restaurants.</p> 	<p>Run of the house</p> <p>Deluxe suite</p> <p>Premier Club Chalet</p>	<p>IDR 2 100 000</p> <p>IDR 5 550 000</p> <p>IDR 4 550 000</p> <p>(net/room, single/double occupancy)</p>

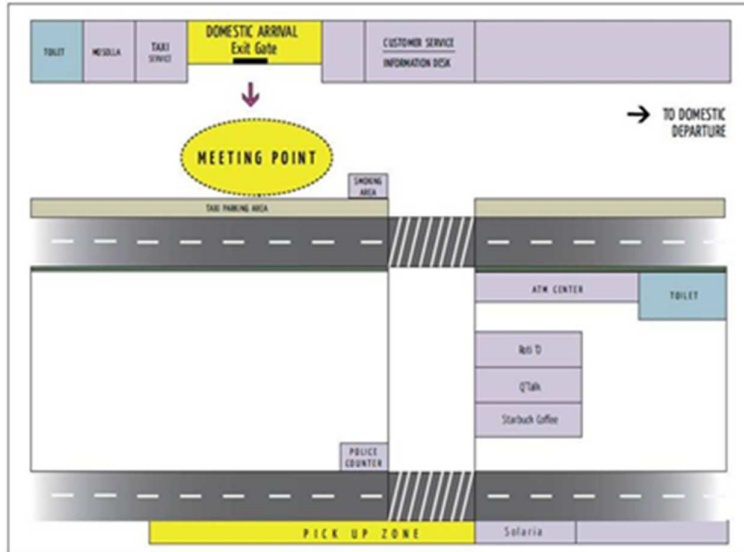
<p>1. Reservation for foreigners/non-KITAS holders</p> <p>https://padmaresortlegian.reserve-online.net/?bkcode=KOMINFO-APAC-RDF-RPM</p> <p>Type of room: run of the house (mixture of Deluxe Room, Deluxe Lagoon View and Deluxe Chalet)</p> <p>Booking period: immediately until 15 February 2017</p> <p>Staying period: 18-25 March 2017</p> <p>2. Indonesian nationals are requested to contact the Padma reservation team:</p> <p>Name: Ms Ari Anggreni E-mail: ari.anggreni@padmahotels.com / sri.wahyuni@padmahotels.com Tel.: +62 361 752 111</p> <p>Booking period: immediately until 15 February 2017 Staying period: 18-25 March 2017</p>		
<p>Alternative accommodation in the vicinity of the meeting venue, to be individually arranged by each delegate</p>		
<p>Ramagarden Hotel (3-star) Jl. Padma, Legian, Kuta 80361 Bali, Indonesia</p> <p>(2 minute walk to meeting venue)</p> <p>Tel.:+62 361 751 971 Fax.: +62 361 755 909 E-mail: reservation@ramagardenhotelbali.com Website: http://www.ramagardenhotelbali.com</p>		
<p>Casa Padma Hotel & Suites (3 star) Jl. Padma, Legian, Kuta Bali, Indonesia</p> <p>(3 minute walk to meeting venue)</p> <p>Tel.: +62 361 753 073 Fax.: +62 361 755 925 E-mail: sales@casapadmasuites.com Website: http://www.casapadmasuites.com/</p>		

Transportation

Delegates who stay at the Padma Resort Legian (meeting venue) for a minimum of 2 (two) consecutive nights will receive free return airport transfers, as follows:

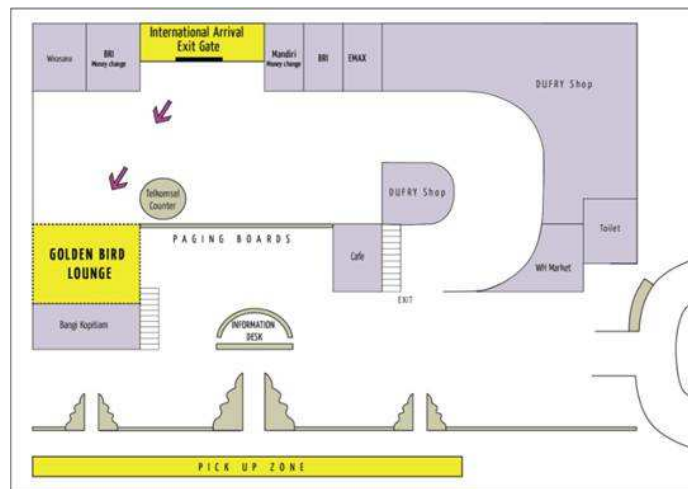
Domestic flights

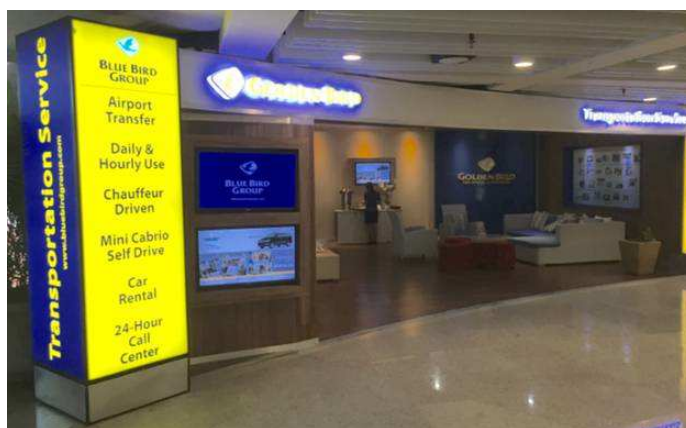
The hotel driver will stand outside the arrivals hall in the Domestic Terminal and will hold a “PADMA RESORT” sign. Please refer to the figure below.



International flights

International delegates are requested to proceed to the **Golden Bird Lounge** that is located slightly to your right once you exit the International Arrivals Gate. The hotel driver will then assist you with VIP courtesies, including mineral water, oshiburi, luggage care and a personal escort to the car. Following is a plan of the International Arrivals Lobby and a photo of the Golden Bird Lounge, for your reference.

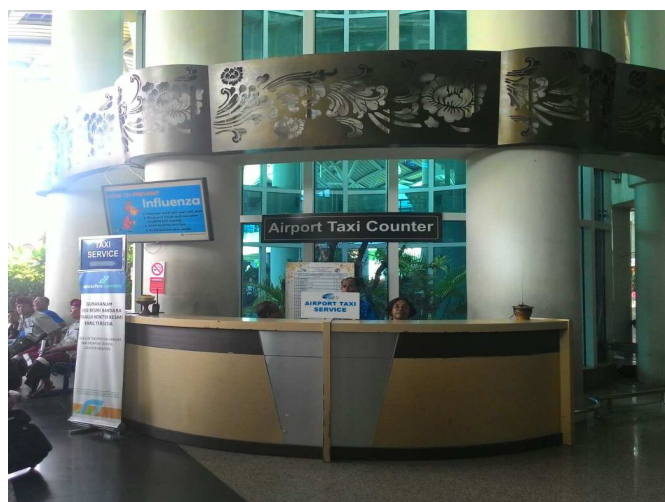
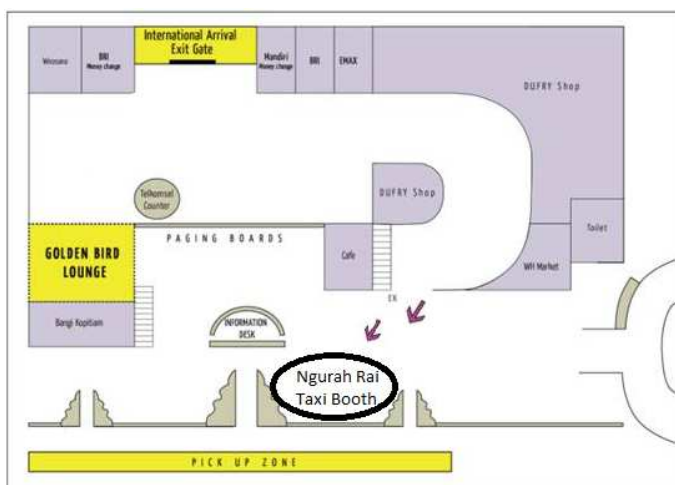




Transfer from the airport to the Padma Resort Legian will take approximately 30-45 minutes, depending on traffic.

Delegates who do not stay at the Padma Resort Legian are encouraged to arrange their own airport transfer to their hotels/venue. Traffic from the Ngurah Rai International Airport may be heavy during rush hours, and the best transportation from the airport to the venue/hotels is by taxi from the Airport taxi counter located across the end of the Arrival Hall Exit. Delegates are strongly recommended to use registered airport taxis, **Ngurah Rai Taxi**, because they are relatively safer and more reliable. The cost of a one-way taxi fare to the Padma Resort Legian is approximately IDR 150 000.

For taxi reservations, delegates may call Ngurah Rai Taxi Customer Center at: +62 361 724 724.





Tourism information

The Padma Resort Legian is only a 5-minute walk to local shops and boutiques; 10-minute walk to lively evening entertainment and fine dining restaurants; a 10-minute drive to Kuta Beach, including Legian Beach and Beachwalk Kuta; 18-minute drive from shopping strip in seminyak district; 20-minute drive to Waterbom amusement park; 30-minute drive to Tanjung Benoa watersport; 40-minute drive to sea food restaurants at Jimbaran beach; and 1 hour drive to the best views for sunsets in Bali, Tanah Lot.

For tour packages, delegates are encouraged to contact directly the Padma Hotel Resort tourism counter, located in the hotel lobby.

Hospital and insurance information

The venue is a 22-minute drive to Denpasar Siloam Hospital. An on-site first-aid service and doctor will be provided 24 hours. For medical emergencies, immediate transportation and admission to a hospital will be organized for the duration of the events and will be operational 24 hours a day, 7 days a week. Delegates are encouraged to arrange their own travel insurance during the duration of their travel and stay.

Weather

The weather in Bali is usually warm, humid, with occasional light rain. Average temperature range in Bali during March varies from 23° to 33° Celsius (73° to 90° Fahrenheit). Light tropical clothing would be appropriate. The conference rooms where the meetings will be held are air-conditioned, with a temperature maintained in the range of 23° to 24° Celsius (73° to 75° Fahrenheit).

Time

Time in Bali, Indonesia, is 8 hours ahead of Greenwich Mean Time (GMT +8).

Electricity and power sockets

In Indonesia, the standard current is 220 volt AC with a frequency of 50 Hz. The picture shows the main type of power socket used in Indonesia. Participants should therefore ensure to bring the appropriate adaptor for their electrical appliances.



Currency

The official currency in Indonesia is Rupiah (IDR/Rp). Bank notes are Rp 100.000, Rp 50.000, Rp 20.000, Rp 10.000, Rp 5.000, Rp 2.000, Rp 1.000. The approximate exchange rate at the time of preparation of this information note is:

USD 1 = Rp 13 000

Major currencies can be exchanged in all banks, money changers, airport, and Padma Resort money changer. Banks are open from 0800h to 1500h on weekdays. Money changers can also be easily found at tourist spots. Delegates are strongly recommended to use registered money changers that have the "PVA" logo.



Contacts

Mr Andreas Christiono
ITU Area office
Jakarta
Tel.: +62 21 380 2322 / 2324
Fax.: +62 3890 5521
Mob.: +62 852 1085 9616
E-mail: andreas.christiono@itu.int

Ms Triana Anugrawati
Center of International Affairs
Ministry of Communication and Information
Technology of Indonesia
Tel.: +62 21 3483 0962
Fax.: +62 21 3500 959
Mob.: +62 81811 9924
E-mail: tria007@kominfo.go.id
