

ITU-T Workshop on Bridging the Standardization Gap and Interactive Training Session

(Cyberjaya, Malaysia, 29 June – 1 July 2010)

Business experiences in implementation of IPTV

**Jung-Ho Kim,
Manager
Central R&D Lab. KT**

Contents

- **KT IPTV Overview**
- **Service Implementations**
- **Platform Implementations**
- **Plans to implement**

KT IPTV Overview

- Name: QOOK TV
- Subscribers: 1.2 millions+
- Coverage: the whole country (since Jan.2009)
- Classifications
 - ➔ ICOD* , using multicast-enabled qos-guaranteed ip network
 - ➔ D&P ** , using best effort ip network
 - ➔ Hybrid, using ip & satellite network

*) ICOD : Internet Contents on demand
**) D&P : Download and play

Service Implementations

■ Channel Service

- Regional public/private broadcast channels: 40+ channels for 26 regions, 3 channels for each region
- Video channels: 90+ channels (20+ HD channels)
- Audio channels: 30+ channels
- Data channels: 70+ channels

Service Implementations

■ EPG

- ➔ Implemented Mosaic, Grid, Mini EPG
- ➔ Provide Grid, Mini EPG now.
- ➔ Select program to watch or reserve



Service Implementations

■ VOD Service

- ➔ 90,000+ contents, 6 super groups
- ➔ Free except last movies/series and tv dramas/shows

Channel Service Guide

VOD Service Guide

Data Service Guide



Service Implementations

■ VOD Service

- ➔ Payment methods: can use coupon or point or mobile payment
- ➔ Search functions: predictive, initial sound



Service Implementations

■ Data Service

- ➔ Information: weather, news, regional
- ➔ Education: home-study materials
- ➔ Entertainment: games, karaoke



Service Implementations

■ Data Service

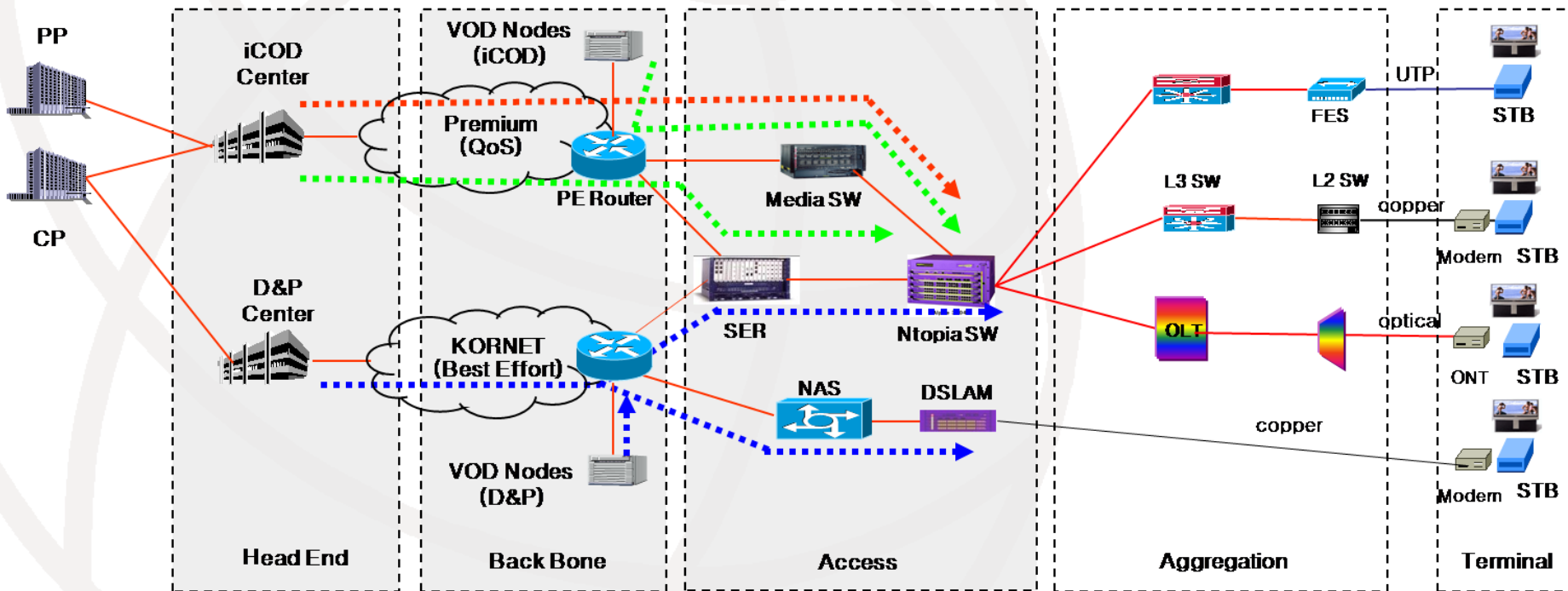
- ➔ Communication: chat, sms, video
- ➔ Commerce: banking, shopping



Platform Implementations

E2E Architecture

Service	Channel	VOD(iCOD)	VOD(D&P)
Transfer	Multicast	Unicast	Unicast



Platform Implementations

- Features of KT's IPTV Head End
 - ➔ Transfer AV to Multicast Channel
 - Encoding: H.264, MPEG-2 AAC
 - Protocol: MPEG-2 TS over RTP
 - Scrambled or Clean AV
 - ➔ Transfer SI and EPG data to the specific Multicast Channel
 - DVB-SI tables: NIT, SDT, BAT, EIT
(extended for IP network and service req.)
 - No In-Band SI, STB can receive SI from the ATTS* channel

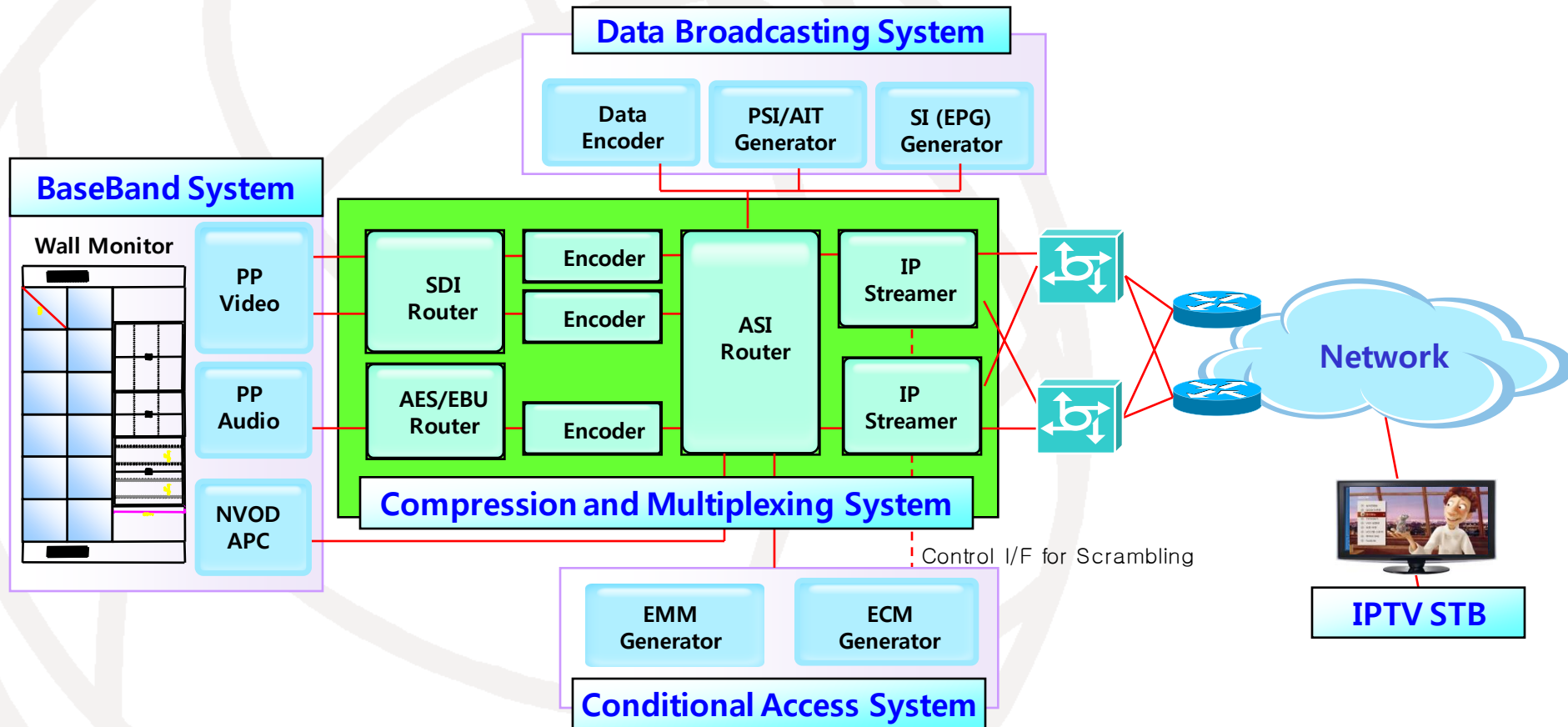
*) ATTS : Always Tuned Transport Stream

Platform Implementations

- Features of KT's IPTV Head End
 - ➔ Provide VOD Streaming or Download
 - Encoding: H.264, MPEG-2 AAC
 - Protocol: RTSP, FTP
 - Protection: CAS(streaming contents) or DRM(downloadable contents)
 - Forensic Watermark enabled
 - ➔ Provide Application and Data
 - Application: AIT for unbound/bound signal
 - Data: image(logo, advertise), menu, notice
 - Protocol: DSMCC(Object Carousel), HTTP

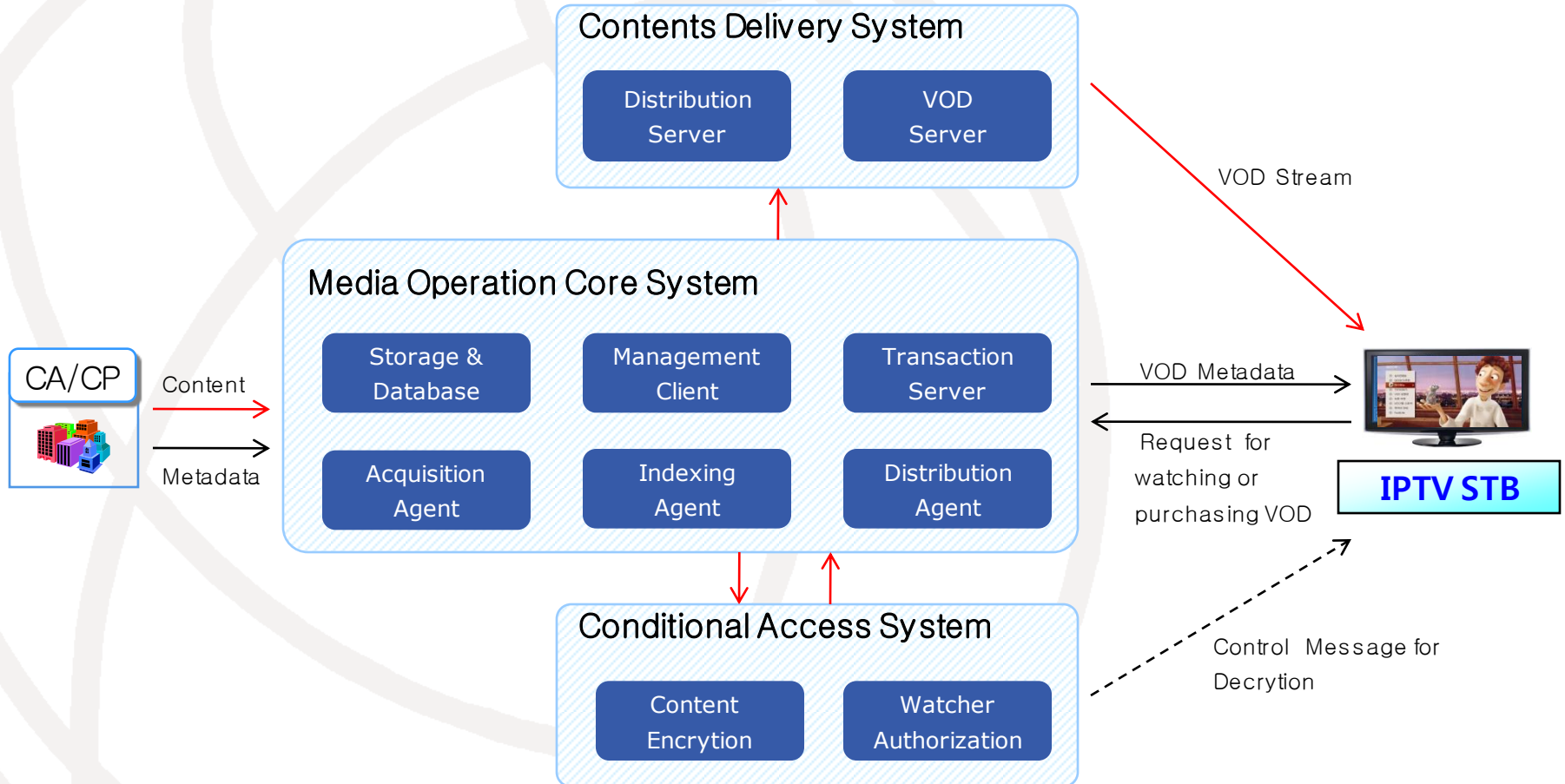
Platform Implementations

■ Systems for Channel Services



Platform Implementations

■ Systems for VOD Services



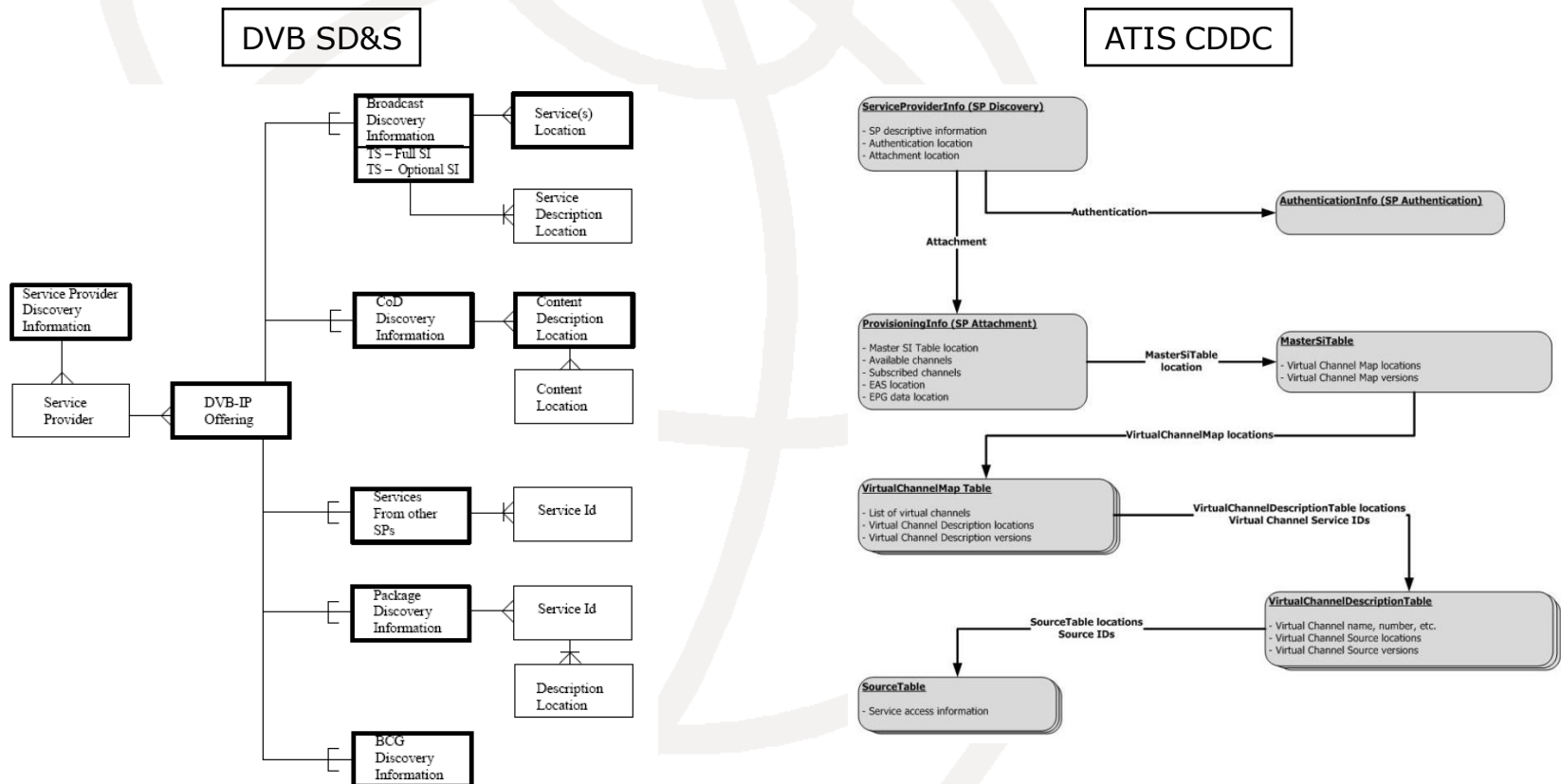
Plans to Implement

- **IPTV Service Discovery and Selection**
 - ➔ DVB SD&S or ATIS CDDC
- **IPTV CAS**
 - ➔ interchangeable and simulcrypt enabled
- **Open IPTV services**
 - ➔ Open Channel
 - ➔ Open VOD
 - ➔ TV AppStore

Plans to Implement

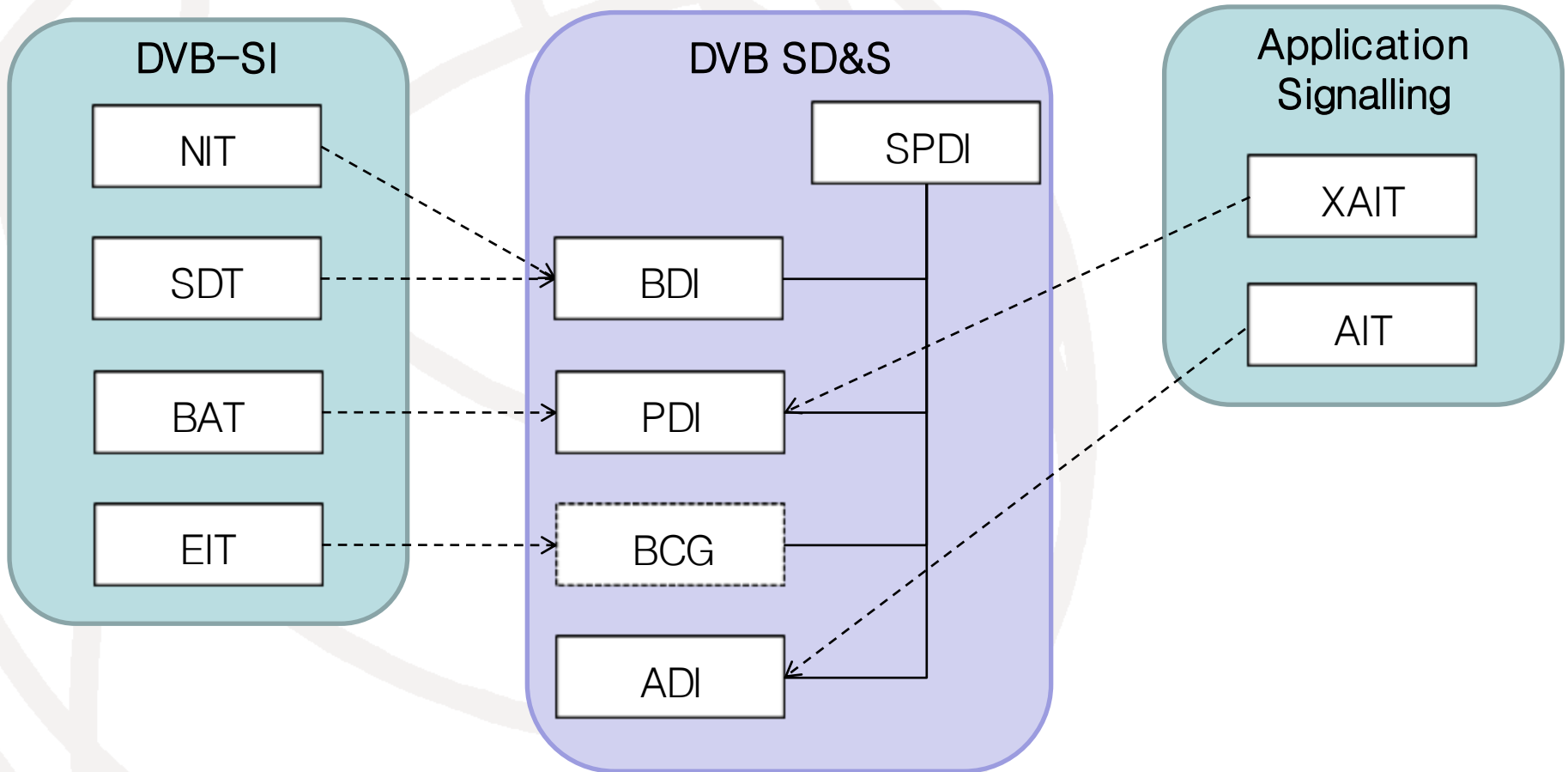
■ DVB SD&S or ATIS CDDC

Our viewpoint: more simple to implement and easy migration



Plans to Implement

■ Migration from SI to SD&S



Plans to Implement

■ SI descriptors and SD&S elements

DVB-SI			DVB SD&S	
Standard Descriptor	TAG	SI Table	SD&S Record	SD&S element/attribute
Bouquet name descriptor	0x47	BAT	PDI	Package/PackageName
Content descriptor	0x54	SDT	BDI	ServiceList/SingleService/SI/ContentGenre
Network name descriptor	0x40	NIT	SPDI	ServiceProvider@DomainName
Service descriptor	0x48	SDT	BDI	ServiceList/SingleService/SI@ServiceType ServiceList/SingleService/SI/Name
Multilingual service name descriptor	0x5D	SDT	BDI	ServiceList/SingleService/SI/Name@Language
Service list descriptor	0x41	BAT	PDI	Package/Service
Private Descriptor	TAG	SI Table	SD&S Record	SD&S element/attribute
IP delivery system descriptor	0x80	NIT	BDI	ServiceList/SingleService/ServiceLocation/IPMulticastAddress
logical channel descriptor	0xE2	BAT	PDI	Package/Service/LogicalChannelNumber

Plans to Implement

■ Customized IPTV Service Discovery

0. Provisioning

- Get entry point and subscriber's package id.

1. Service Provider Discovery

- Search offering for subscriber's package whose segment id is the subscriber's package id.

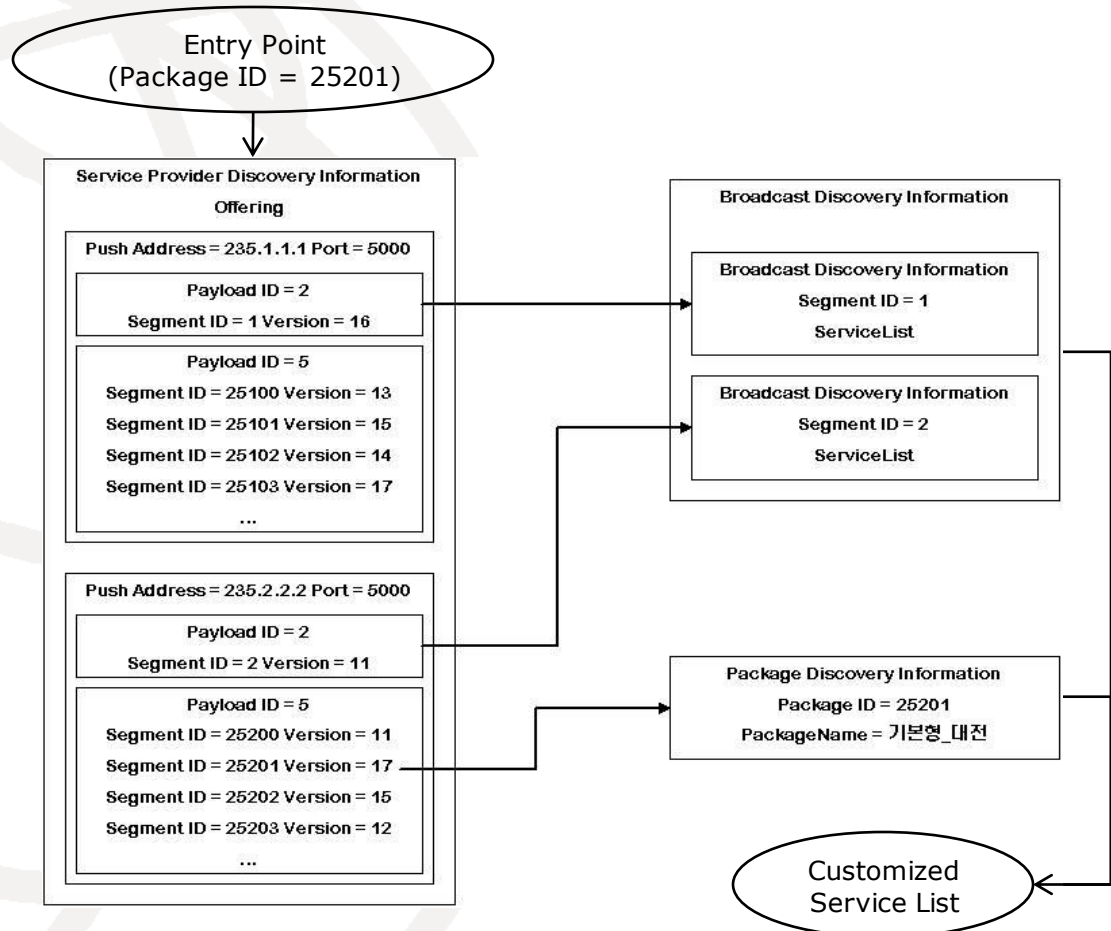
2. Package Discovery

- Get service list of the subscriber's package.

3. Broadcast Discovery

- Get service information of the subscriber's package.

4. Configure Customized Service List



Q&A

- Thank you for your patience
- Contact info. for more questions
 - ➔ e-mail: daedong@kt.com