

*DBSG3 rel. 1.0*  
*A WEB based server*

*Introduction*  
*for Users and Table-Keepers*

· *ITU-R Study Group 3 Meeting*  
*October the 3<sup>rd</sup> 2006*

*Prepared by:*  
*A. Martellucci*  
*ESA-ESTEC*



# Outline

- Definitions and Acronyms
- From DBSG5 to DBSG3 r. 1.0
- How to get to DBSG3
  - Relevant documentation
- Table Publication Process and Roles
  - User, Table Keeper, Publisher
- WEB Interface for User (Us)
- WEB Interface for Table-keeper (Tk)
- Table Maintenance Tools and Procedures
- Status and Known Issues
- Conclusions and Developments

# Definitions and Acronyms

- Relational databases
  - Data are arranged in records (Rows)  
1 experiment = 1 record
  - Data of a particular type are in fields (Columns)  
Frequency = 1 Field
- CSV File (ref. Internet RFC 4180)
  - Comma-Separated Values file
  - Fields separated by commas
  - Records separated by New-Line
  - Not standardized
  - Double quotes can enclose strings



# From DBSG5 to DBSG3

- Reference: Formatted Tables for submission of data
  - <http://www.itu.int/ITU-R/study-groups/software/tables/index.html>
- DBSG3 rel. 1.0: Characteristics
  - A WEB based database manager and publisher
  - <http://saruman.estec.esa.nl/dbsg3/>
  - The access is only through a WEB interface  
Internet Explorer V 6.0 or Firefox 1.5
  - Only predefined fields can be queried
  - Table Update Procedure
    - New data are sent to TK
    - TK checks data and approves, converts data to CSV format <sup>+</sup>
    - TK uploads CSV file on WEB server
    - WEB server parses CSV file against table implementation
    - Publisher approves new table and previous one is archived
    - New version of the Database is published

# DBSG3 Access and Documents

- To get username/ password:

[bertram@tec-ee.esa.int](mailto:bertram@tec-ee.esa.int)

[antonio.martellucci@esa.int](mailto:antonio.martellucci@esa.int)

- Relevant documentation

- [DBSG3 User manual](#) (rel. 1.1)

- [Table implementation Spreadsheet](#) (rel. 7.0)

Database Record Data type and size

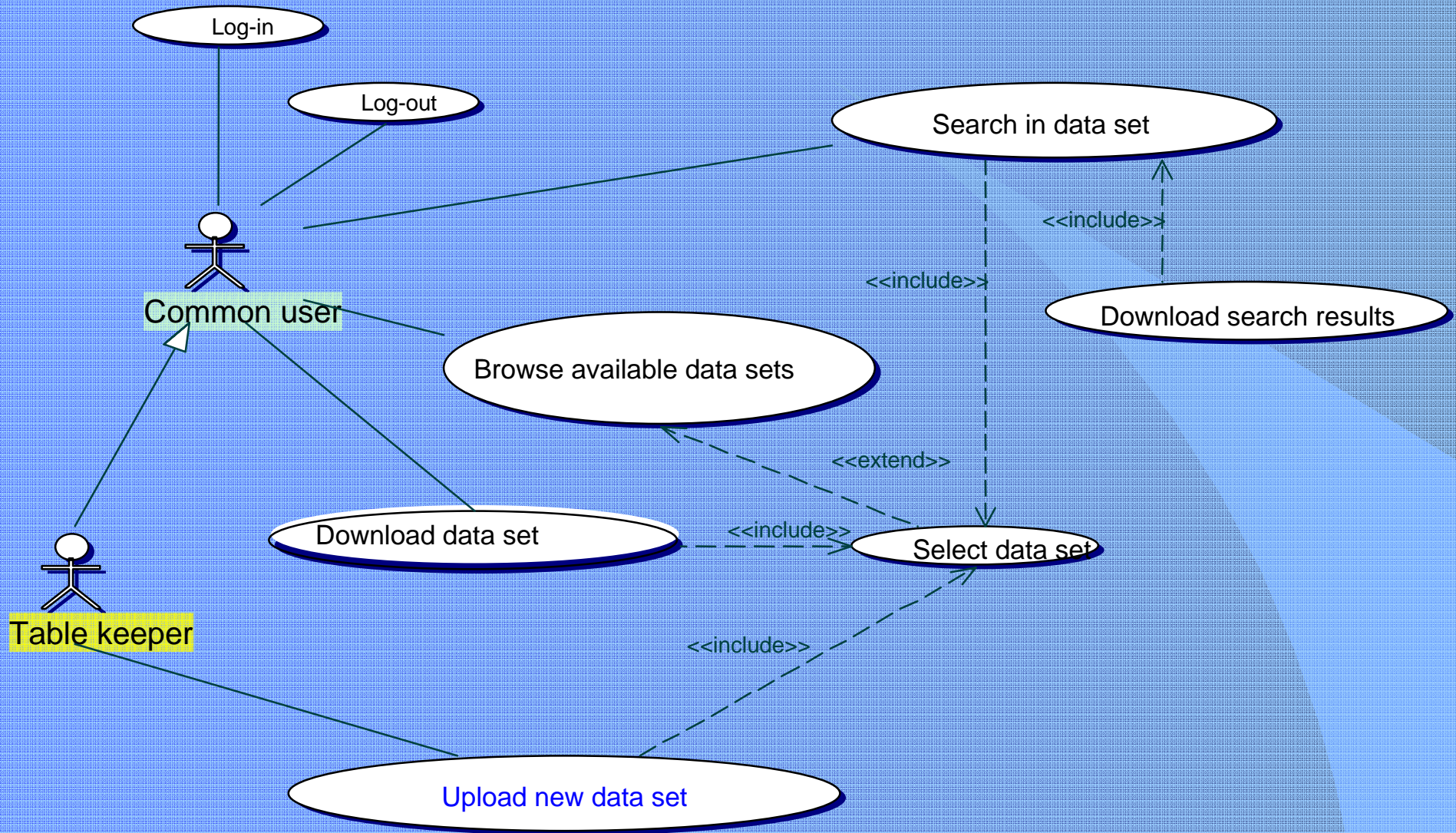
Cyan BG = Query Fields

Red Font = duplicated/removed record

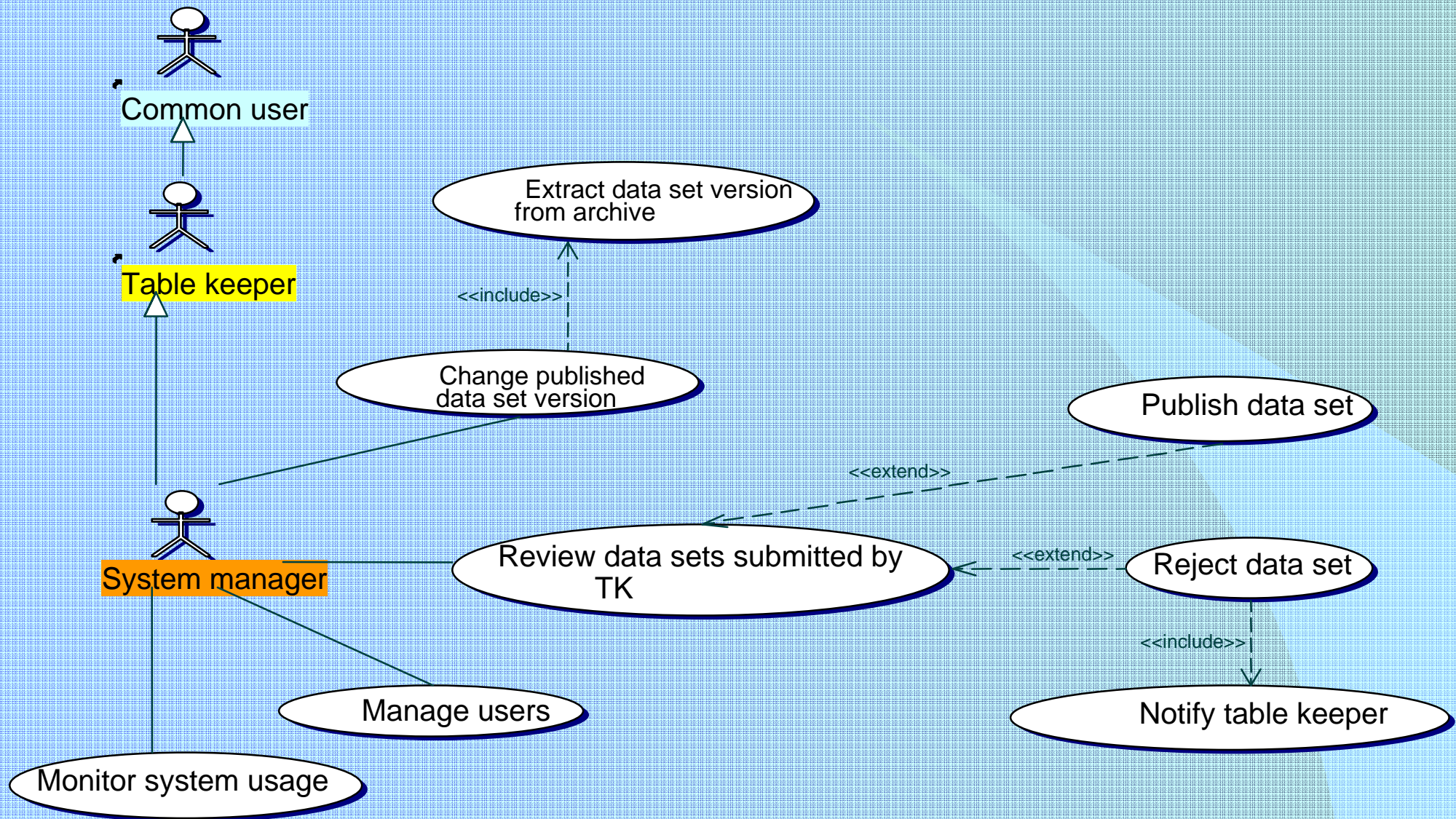
- Login on the WEB server

<http://saruman.estec.esa.nl/dbsg3/>

# Table Publication Process and Roles



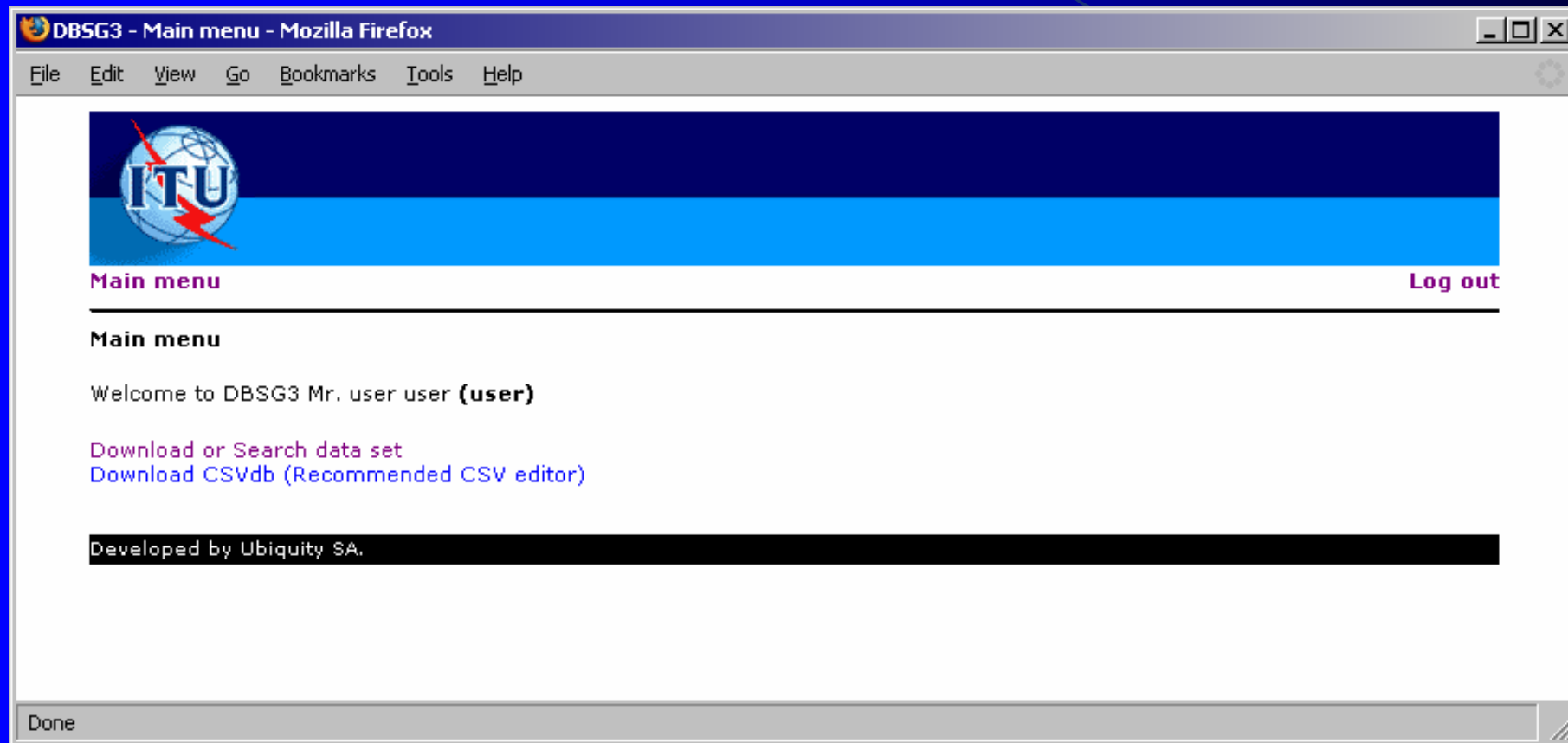
# Table Publication Process and Roles





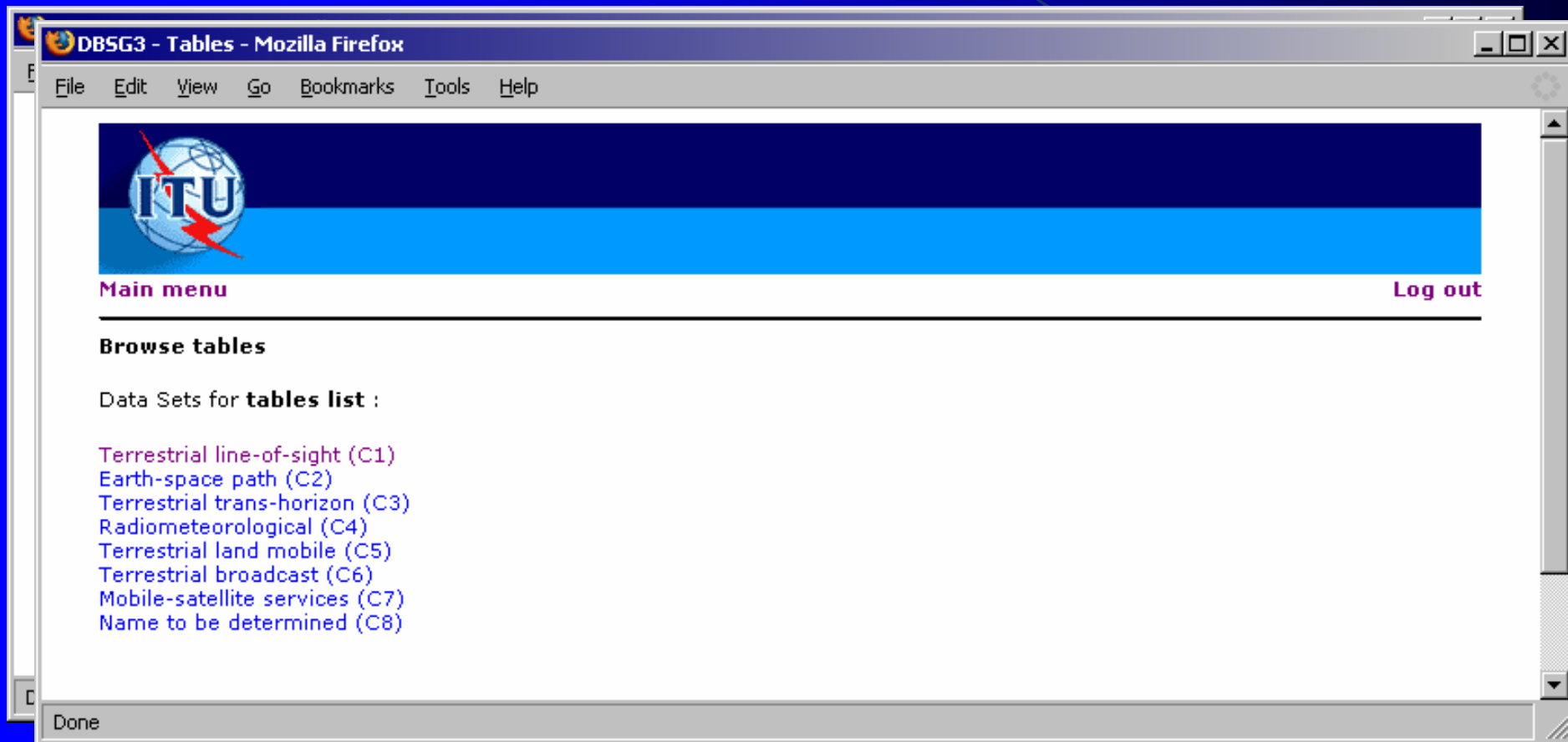
# User WEB Interface

- User Main Menu



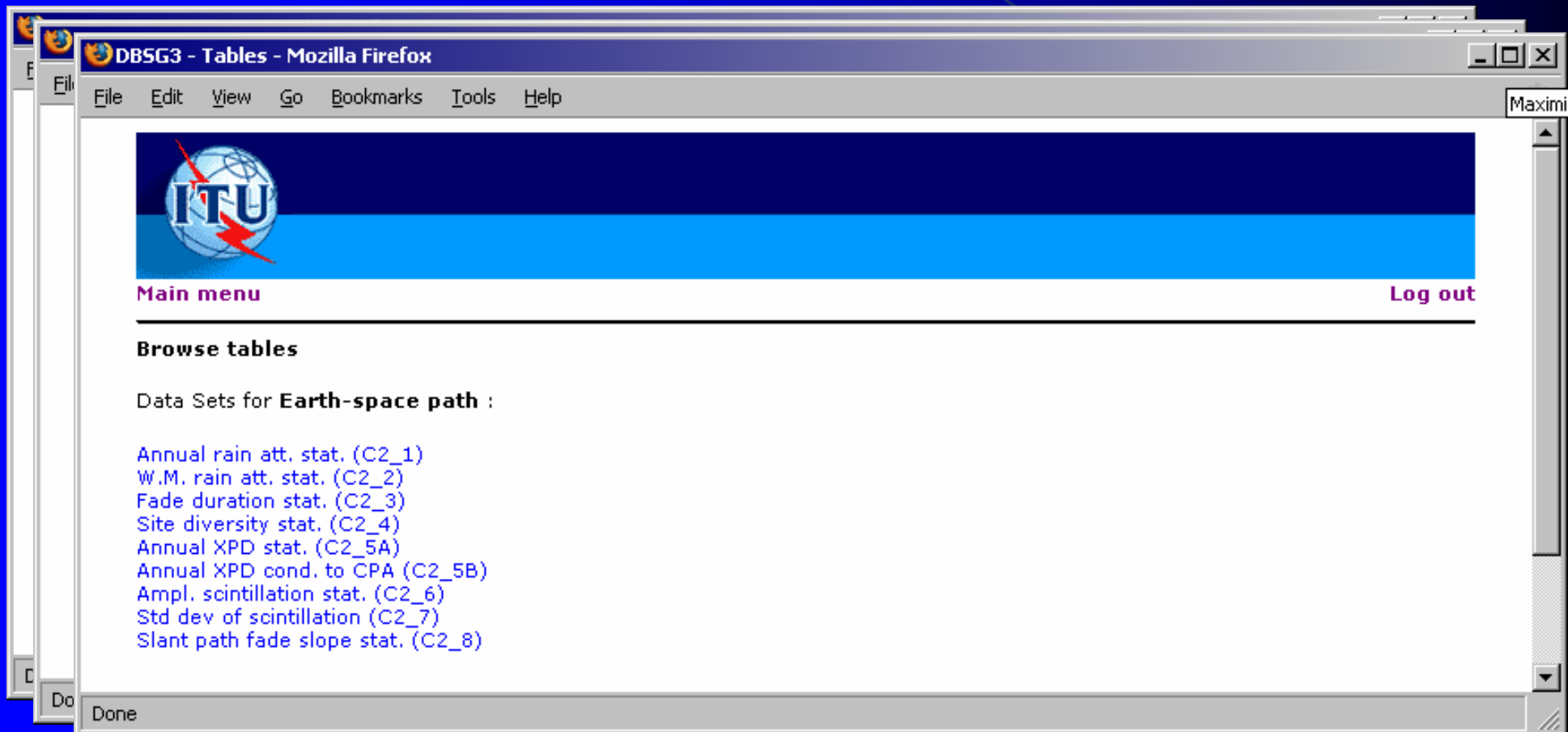
# User WEB Interface

- User Main Menu



# User WEB Interface

- User Main Menu




# User WEB Interface

- User Main Menu

DBSG3 - Published data Sets - Mozilla Firefox

File Edit View Go Bookmarks Tools Help



[Main menu](#) [Log out](#)

**Download or Search data set**

Published data sets for table **Annual rain att. stat.** :

Code	Label	Submitted	Published	Comment on submit	Comment on publish	Submitted by
C2_1_v1	20060504_AM_01	2006-05-04	2006-05-04	<a href="#">view</a>	<a href="#">view</a>	keeper

[Back to Earth-space path](#)

Developed by Ubiquity SA.

# User WEB Interface

- User Main Menu

The screenshot displays the DBSG3 web interface in Mozilla Firefox. The main menu is visible, along with a search section for data set C2\_1. The search criteria form includes various filters and operators.

**Main menu**

**Download or Search data set**

Published data sets for table **Annual**

Code	Label	Subm
C2_1_v1	20060504_AM_01	2006-

[Back to Earth-space path](#)

Developed by Ubiquity SA.

**Search in data set C2\_1**

Please select your search criteria.

Date Format is : **yyyy/MM/dd**  
Decimal separator is : .

R\_COUNTRY equal [ ]

R\_LATITUDE = [ ] deg Range from -90.0 to 90.0

R\_LONGITUDE = [ ] deg Range from 0.0 to 360.0

R\_ALTITUDE equal [ ] m

SATEL\_POS = [ ] deg Range from 0.0 to 360.0

TYPE equal [ ]

START\_DATE equal [ ] and [ ]

END\_DATE equal [ ] and [ ]

DURATION = [ ] 365 days

FREQUENCY > [ ] 20 GHz

POL\_L\_C equal [ ]

POLAR = [ ] deg

ELEVATION = [ ] deg Range from 0.0 to 90.0

RAIN\_CONC equal [ ]

ATT\_E\_T equal [ ]

# User WEB Interface

- User Main Menu

The screenshot shows the DBSG3 web interface in Mozilla Firefox. The main menu is visible, showing search options for data set C2\_1. A dialog box titled "Opening query-C2\_1\_v1.csv" is open, asking the user what to do with the file. The "Save to Disk" option is selected.

**DBSG3 - Search data set - Mozilla Firefox**

File Edit View Go Bookmarks Tools Help

**ITU**

**Main menu**

Search in data set C2\_1

Please select your search criteria

Date Format is : **yyyy/MM/dd**  
Decimal separator is : .

R\_CTRY = equal  
 R\_LATITUDE =  
 R\_LONGITUDE =  
 R\_ALTITUDE =  
 SATEL\_POS =  
 TYPE = equal  
 START\_DATE = equal  
 END\_DATE = equal  
 DURATION =  
 FREQUENCY >  
 POL\_L\_C = equal  
 POLAR = deg  
 ELEVATION = deg Range from 0.0 to 90.0  
 RAIN\_CONC = equal  
 ATT\_E\_T = equal

**Opening query-C2\_1\_v1.csv**

You have chosen to open

**query-C2\_1\_v1.csv**  
which is a: Microsoft Office Excel Comma Separated Values File  
from: http://saruman.estec.esa.nl

What should Firefox do with this file?

Open with Microsoft Office Excel (default)  
 Save to Disk  
 Do this automatically for files like this from now on.

OK Cancel

**DBSG3 - Published data Sets - Mozilla Firefox**

File Edit View Go Bookmarks Tools

**ITU**

**Main menu**

**Download or Search data set**

Published data sets for table **Annual**

Code	Label	Subm
C2_1_v1	20060504_AM_01	2006-

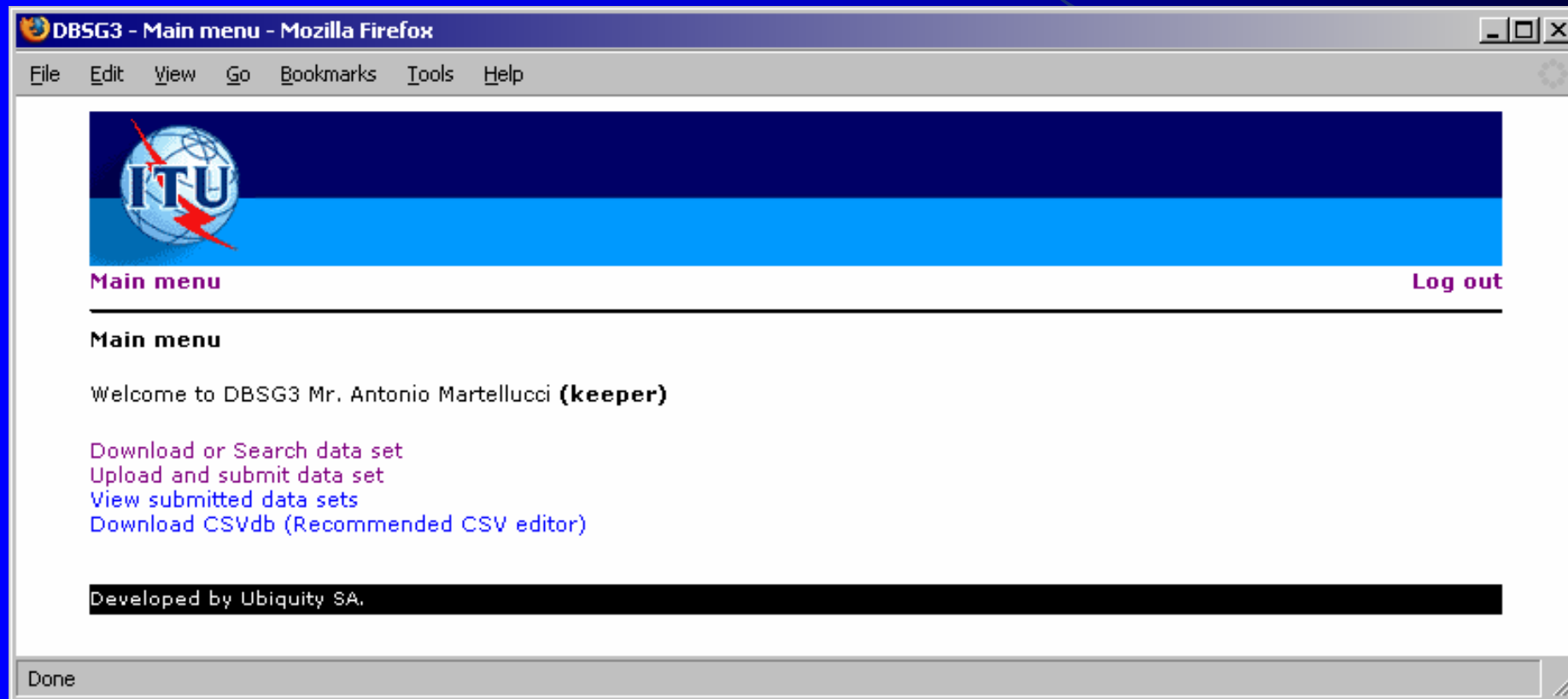
[Back to Earth-space path](#)

Developed by Ubiquity SA.

Done

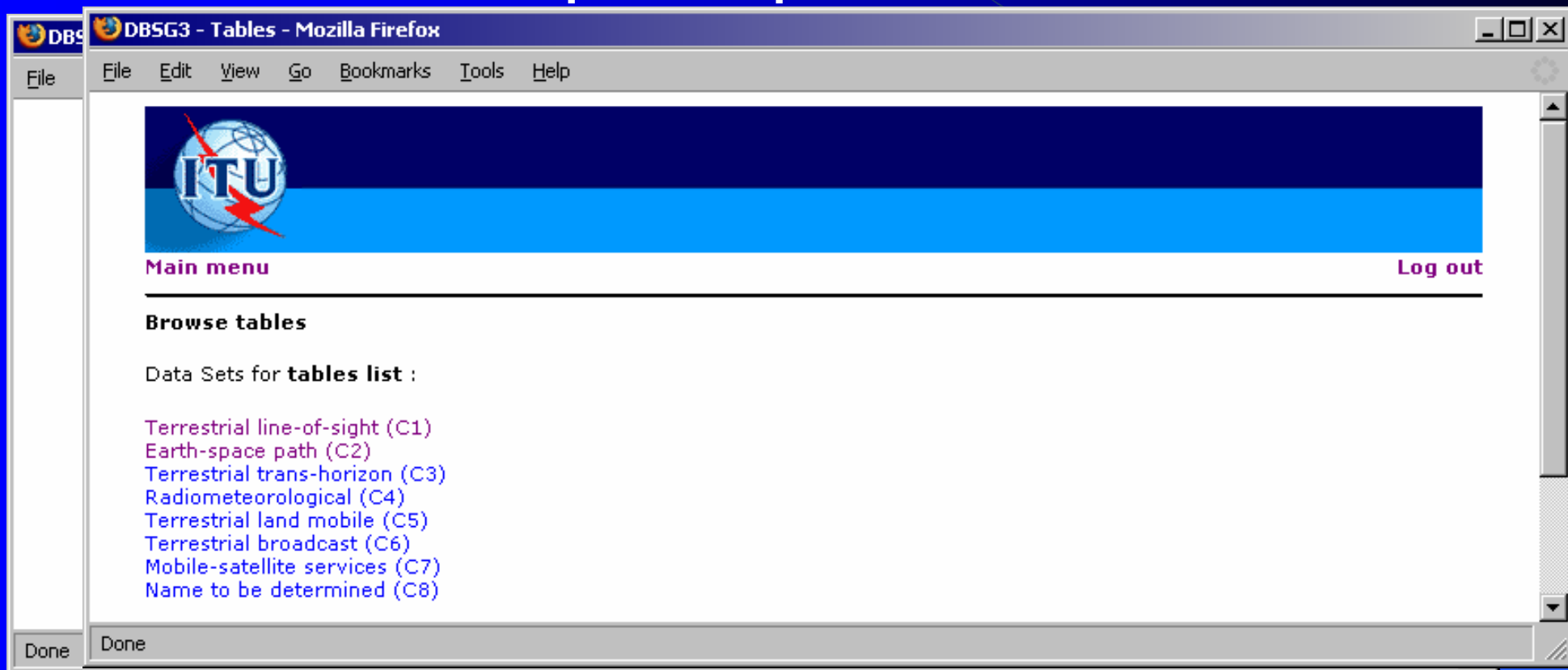
# User WEB Interface

- Table Keeper Upload & Submit



# User WEB Interface

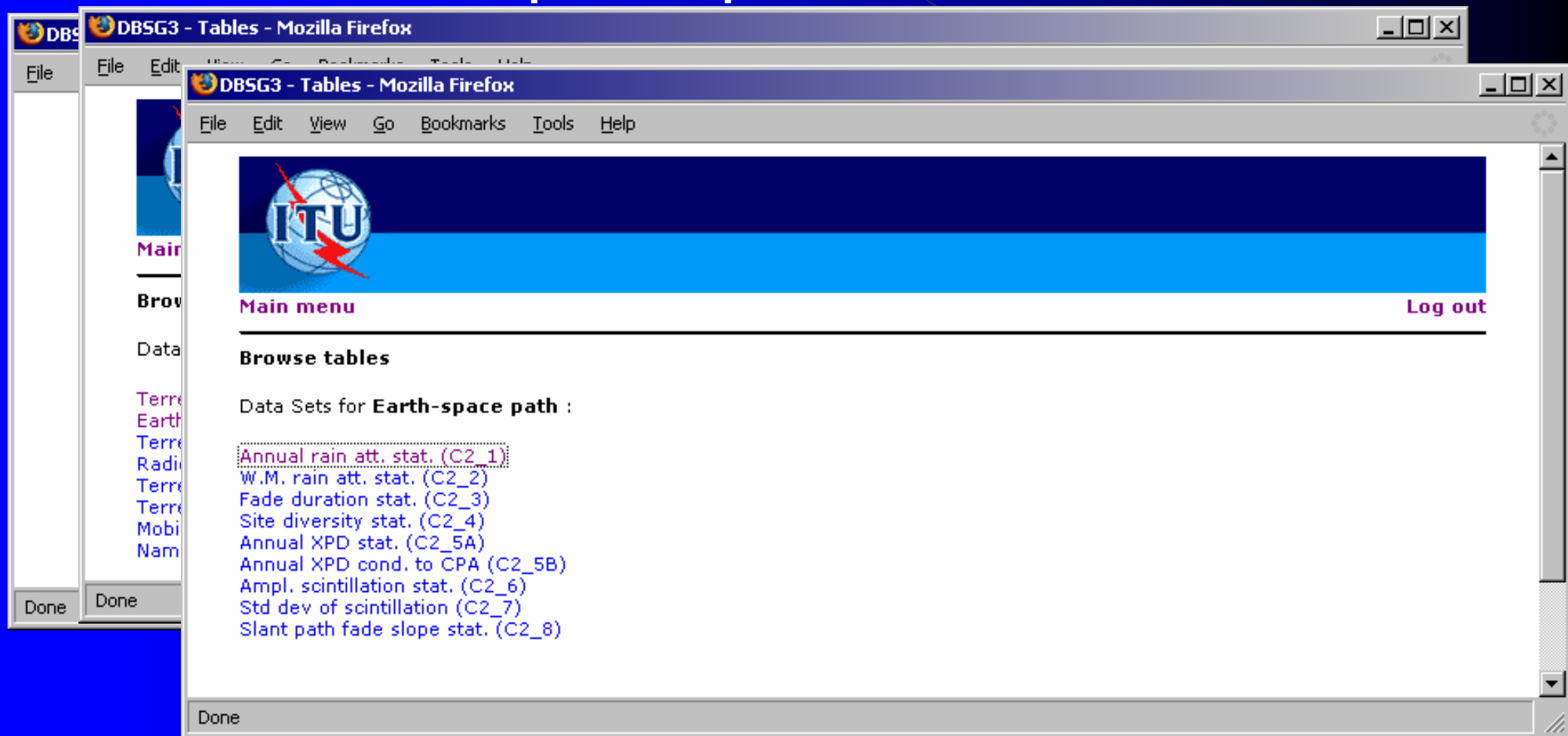
- Table Keeper Upload & Submit





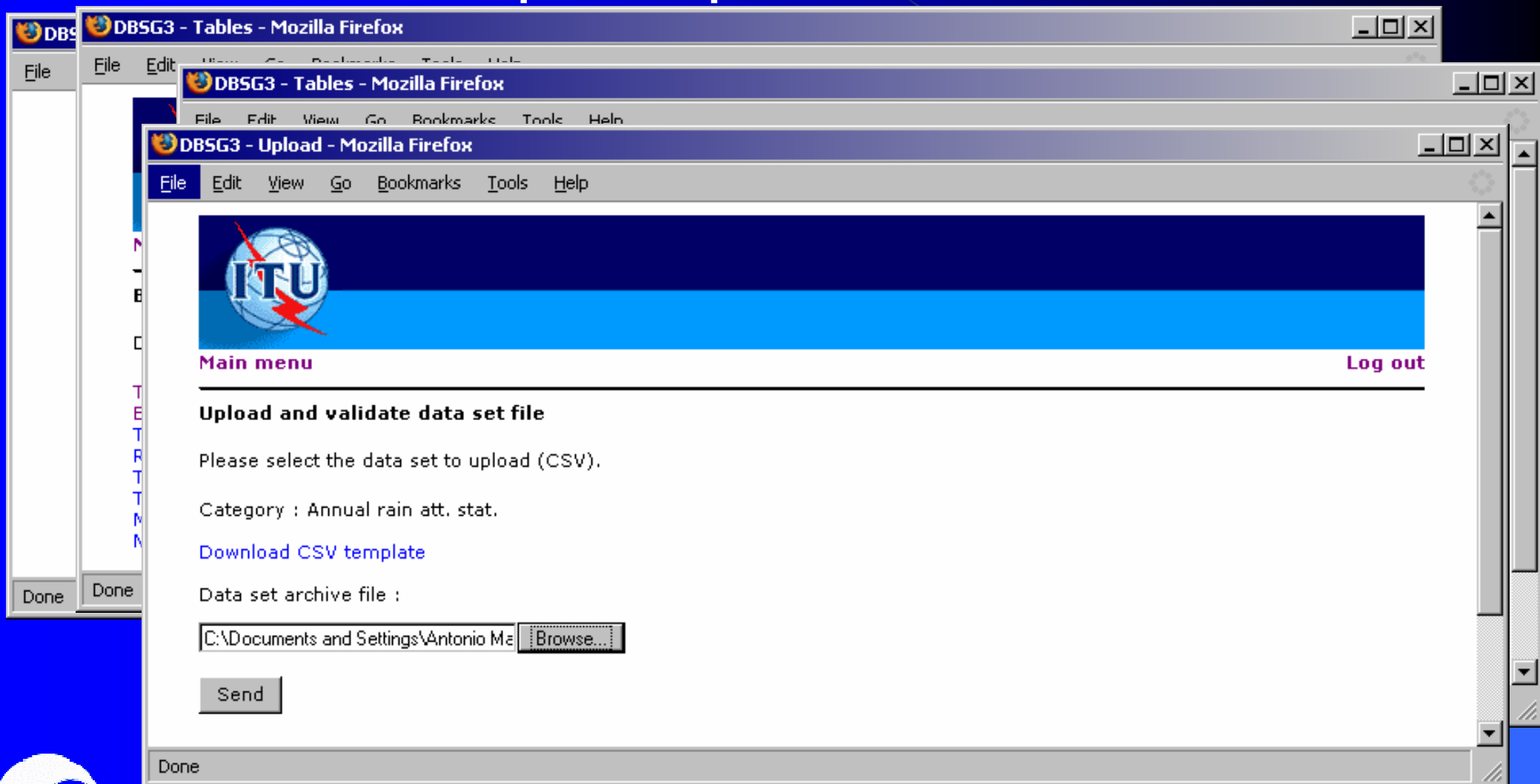
# User WEB Interface

- Table Keeper Upload & Submit



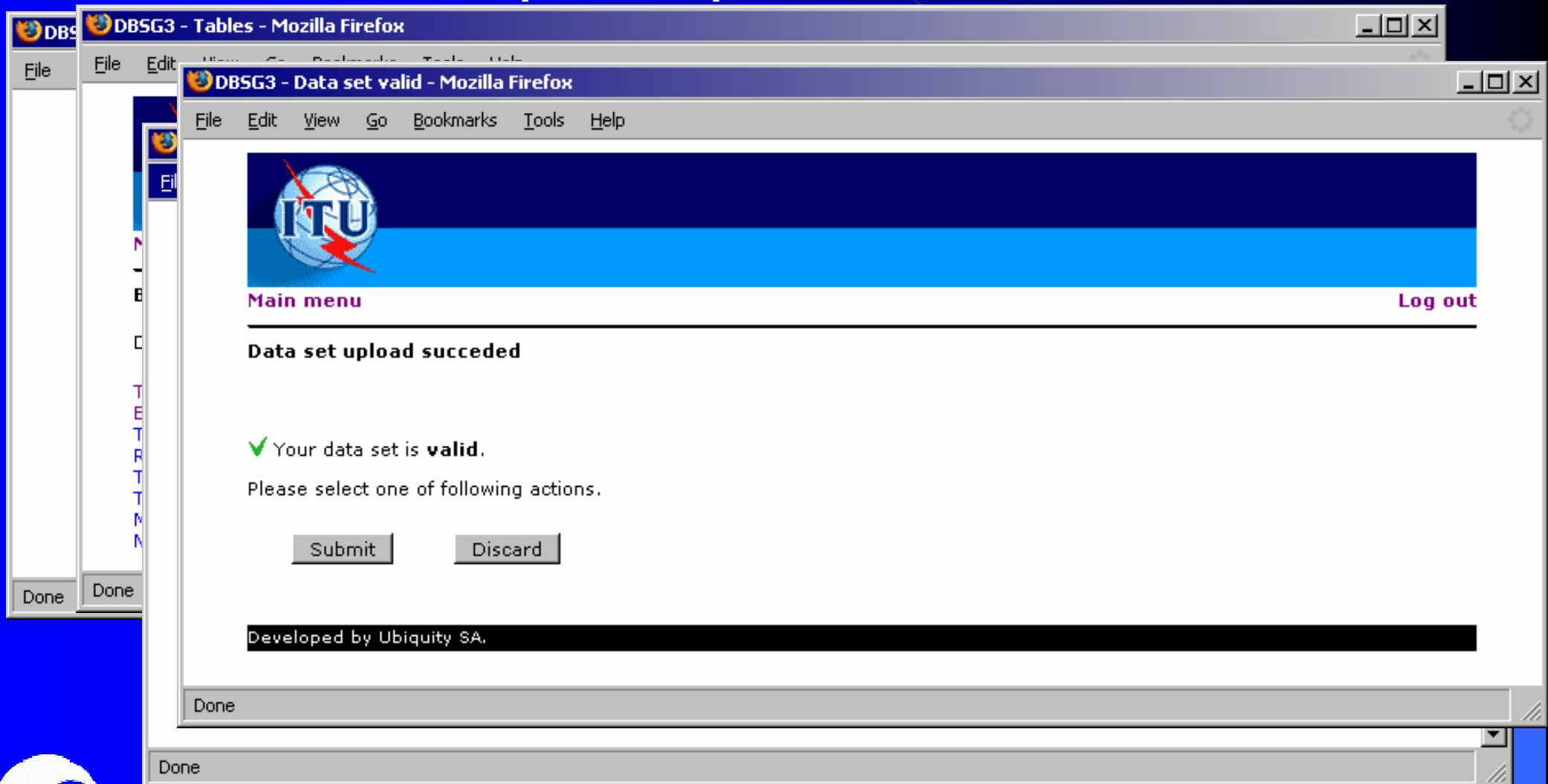
# User WEB Interface

- Table Keeper Upload & Submit



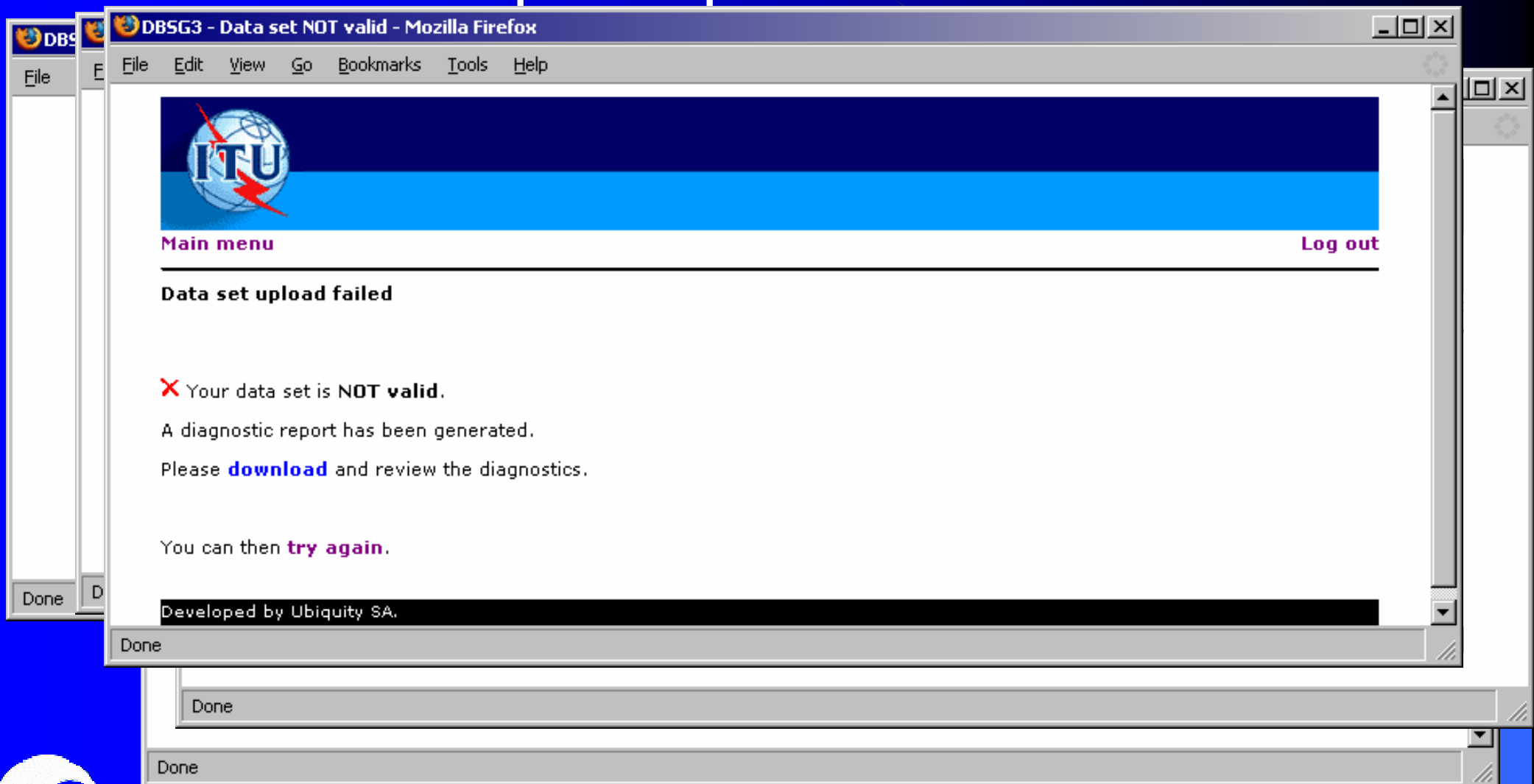
# User WEB Interface

- Table Keeper Upload & Submit



# User WEB Interface

- Table Keeper Upload & Submit




# User WEB Interface

- Table Keeper: View Submission log

DBSG3 - Submitted data Sets - Mozilla Firefox

File Edit View Go Bookmarks Tools Help

 [Main menu](#) [Log out](#)

**View submitted data sets**

Submitted data sets (for keeper Mr. Antonio Martellucci) :

Dataset	Version	Label	Last Modified	State	Comment
C2_1	1	20060504_AM_01	2006-05-04	Published	<a href="#">view</a>
C1_2	0	20060424_AM_08	2006-04-24	Published	<a href="#">view</a>
C3_2	0	20060424_AM_07	2006-04-24	Published	<a href="#">view</a>
C3_1	0	20060424_AM_06	2006-04-24	Published	<a href="#">view</a>
C7_2	0	20060424_AM_05	2006-04-24	Published	<a href="#">view</a>
C1_6	0	20060424_AM_04	2006-04-24	Published	<a href="#">view</a>
C1_5	0	20060424_AM_03	2006-04-24	Published	<a href="#">view</a>
C1_4	0	20060424_AM_02	2006-04-24	Published	<a href="#">view</a>
C1_3	0	20060424_AM_01	2006-04-24	Published	<a href="#">view</a>
C2_7	0	20060420_AM_07	2006-04-20	Published	<a href="#">view</a>
C2_6	0	20060420_AM_06	2006-04-20	Published	<a href="#">view</a>
C2_5B	0	20060420_AM_05	2006-04-20	Published	<a href="#">view</a>
C2_5A	0	20060420_AM_04	2006-04-20	Published	<a href="#">view</a>
C4_4	0	20060420_AM_03	2006-04-20	Published	<a href="#">view</a>
C4_3	0	20060420_AM_02	2006-04-20	Published	<a href="#">view</a>
C4_2	0	20060420_AM_01	2006-04-20	Published	<a href="#">view</a>
C2_4	0	20060419_AM_01	2006-04-18	Published	<a href="#">view</a>
C2_1	0	20060413_AM_01	2006-05-04	Archived	<a href="#">view</a>
C2_1	-	20060413_AM_01	2006-04-13	Rejected	<a href="#">view</a>
C4_1	0	20060412_AM_01	2006-04-12	Published	<a href="#">view</a>

[Back to Earth-space path](#)

Done

# Table Maintenance Procs/Tools

- Recommended CSV editor
  - Csv editor: <http://home.hccnet.nl/s.j.francke/t2t/text2table.htm>

- Data are preserved when file is opened
- DOS/Windows conversion
- Various field operators

Column 24 PART_DATE	Column 25 END_DATE	Column 26 DURATION	Column 27 FREQUENCY	Column 28 POL_L_C	Column 29 POLAR	Column 30 ELEVATION
177106/01	197810/01	365	11.7	C	45	24
178106/01	197905/01	365	11.7	C	45	24
178101/01	197811/201	365	19	L	0	35.5
179101/01	197911/201	365	19	L	0	38.5
178101/01	197811/201	365	28.6	L	90	35.5
179101/01	197911/201	365	28.6	L	90	38.5
176107/01	197710/01	365	19	L	90	21
177108/01	197808/01	365	19	L	90	41.8
176107/01	197710/01	365	28.6	L	90	27.3
177108/01	197808/01	365	28.6	L	90	41.8
176104/01	197710/01	365	11.7	C	45	27
177104/01	197810/01	365	11.7	C	45	27
178104/01	197910/01	365	11.7	C	45	27
176107/01	197810/01	700	19	L	90	18.5
177105/01	197810/01	365	19	L	69	38.6
177105/01	197810/01	365	19	L	21	38.6
177105/01	197810/01	365	28.6	L	69	38.6
174110/01	197510/01	365	11.6	L	0	42
176107/01	197710/01	365	11.6	L	0	21
177108/01	197810/01	365	11.6	L	0	41
178108/01	197910/01	365	11.6	L	0	43.5
176107/01	197710/01	365	19	L	86	21
176107/01	197710/01	365	19	L	4	21
177108/01	197810/01	365	19	L	69	41
177108/01	197810/01	365	19	L	21	41
178108/01	198010/01	780	19	L	90	43.5
176107/01	197710/01	365	28.6	L	86	21
177108/01	197810/01	365	28.6	L	69	41
178108/01	198010/01	780	28.6	L	90	43.5
176107/01	197710/01	365	11.7	C	45	29
177107/01	197810/01	365	11.7	C	45	29
178107/01	197910/01	365	11.7	C	45	29
176107/01	197910/01	1095	11.7	C	45	29
177104/01	197810/01	365	28.6	L	55	41.6
178109/01	197910/01	365	28.6	L	55	44.5
179109/01	198010/01	360	28.6	L	55	44.5
177101/01	197711/01	334	11.7	C	45	33
178101/01	197811/01	365	11.7	C	45	33
176106/01	197910/01	1095	11.7	C	45	33
179101/01	197911/01	365	11.6	C	45	10.7
180101/01	198011/01	366	11.6	C	45	10.7

# Table Maintenance Procs/Tools

- Recommended CSV editor

# *Status and Known Issues*

- Conversion & Upload of DBSG5 data
  - Completed by May 2006
  - MS-Excel can be used but tricky
  - Support on request
- Issues/Bugs
  - Table 7-III is not implemented  
csv file is available
  - Auxiliary files not implemented (e.g. path profile)
  - Tables in DBSG3 to be checked by TKs
  - Database rules are very rigid
  - 1<sup>st</sup> record of submitted table is stripped by DBSG3



# Conclusions & Developments

- Get feedback from TKs and Users
- Solve Current Issues
- Implement new Tables
  
- DBSG3 is for Statistical Tables  
NOT  
for time series/ frequency sweeps



Separate (related)  
definition/tool for time series