

## Overview of ETSI TISPAN WG8

Leen Mak

Manager, Standards and Industry Relations

Lucent Technologies

Vice Chair, ETSI TISPAN WG8



ITU-T

# Agenda



- o ETSI
- o ETSI TISpan
- o TISpan NGN Architecture
- o TISpan Working Group 8
- o WG8 Accomplishments
- o TISpan NGN OSS Architecture
- o WG8 Current activities



ITU-T

# ETSI

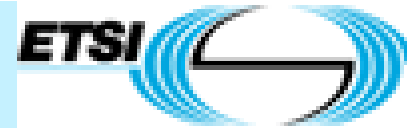


- o European Telecommunications Standards Institute
- o Officially responsible for standardization of Information and Communication Technologies (ICT) within Europe
- o ~ 650 members from ~ 60 countries inside and outside Europe, including manufacturers, network operators, administrations, service providers, research bodies and users

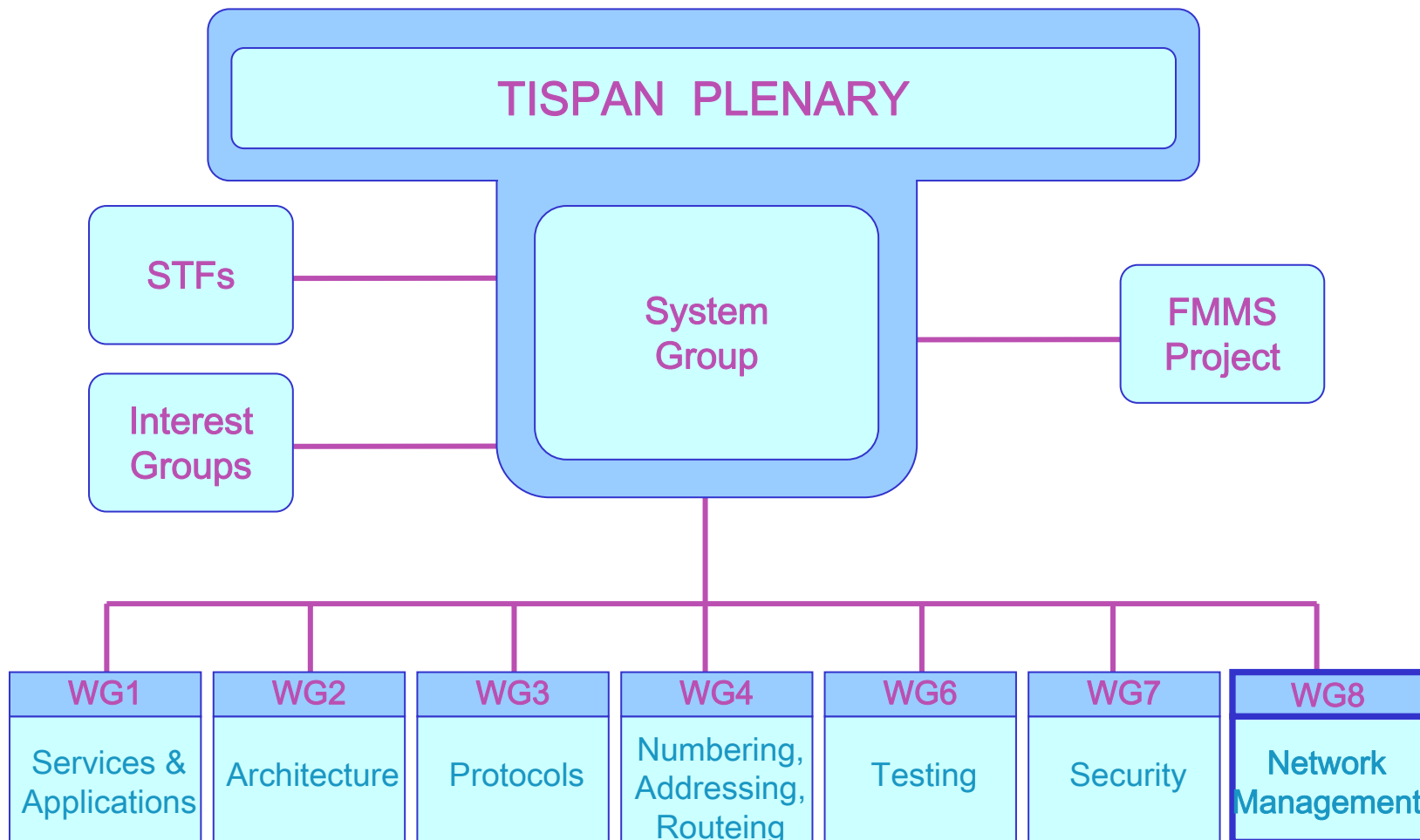


ITU-T

# ETSI TISPAN



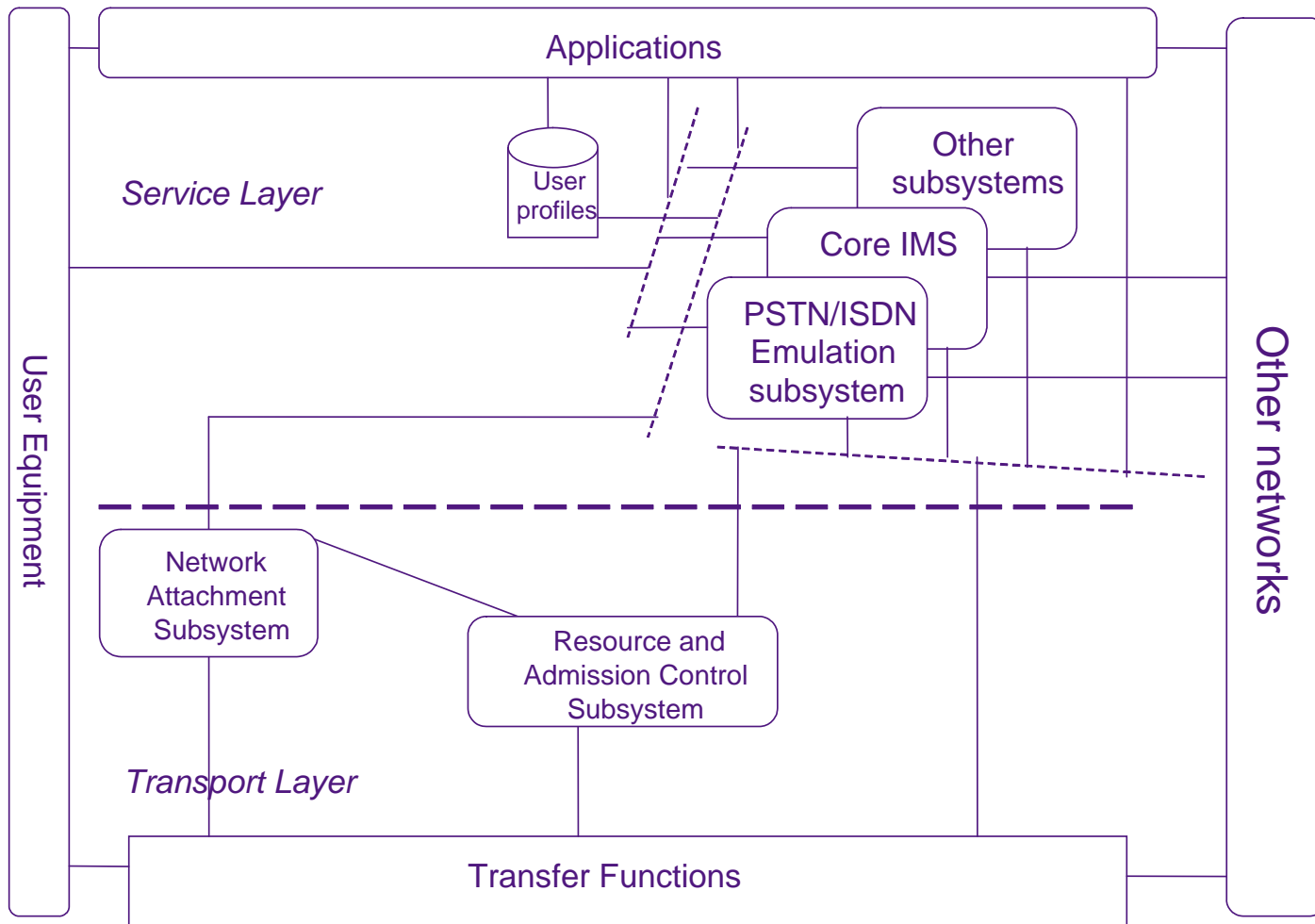
- o Telecoms & Internet converged Services & Protocols for Advanced Networking
- o ETSI core competence centre for
  - fixed networks
  - migration from switched circuit networks to packet-based networks
  - Next Generation Networks
- o Structure:
  - Technical Committee with core tasks
  - System Group and 7 Working Groups with specific responsibilities, and technical competencies





ITU-T

# TISPAN NGN Architecture

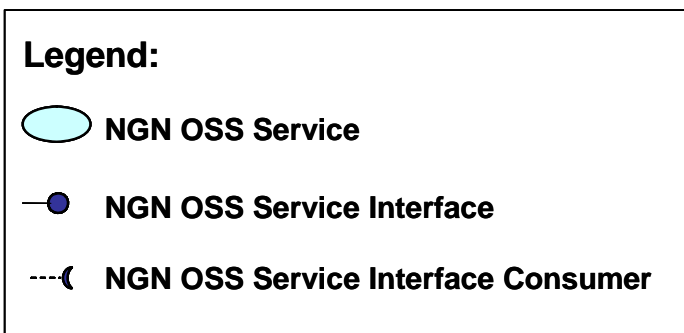
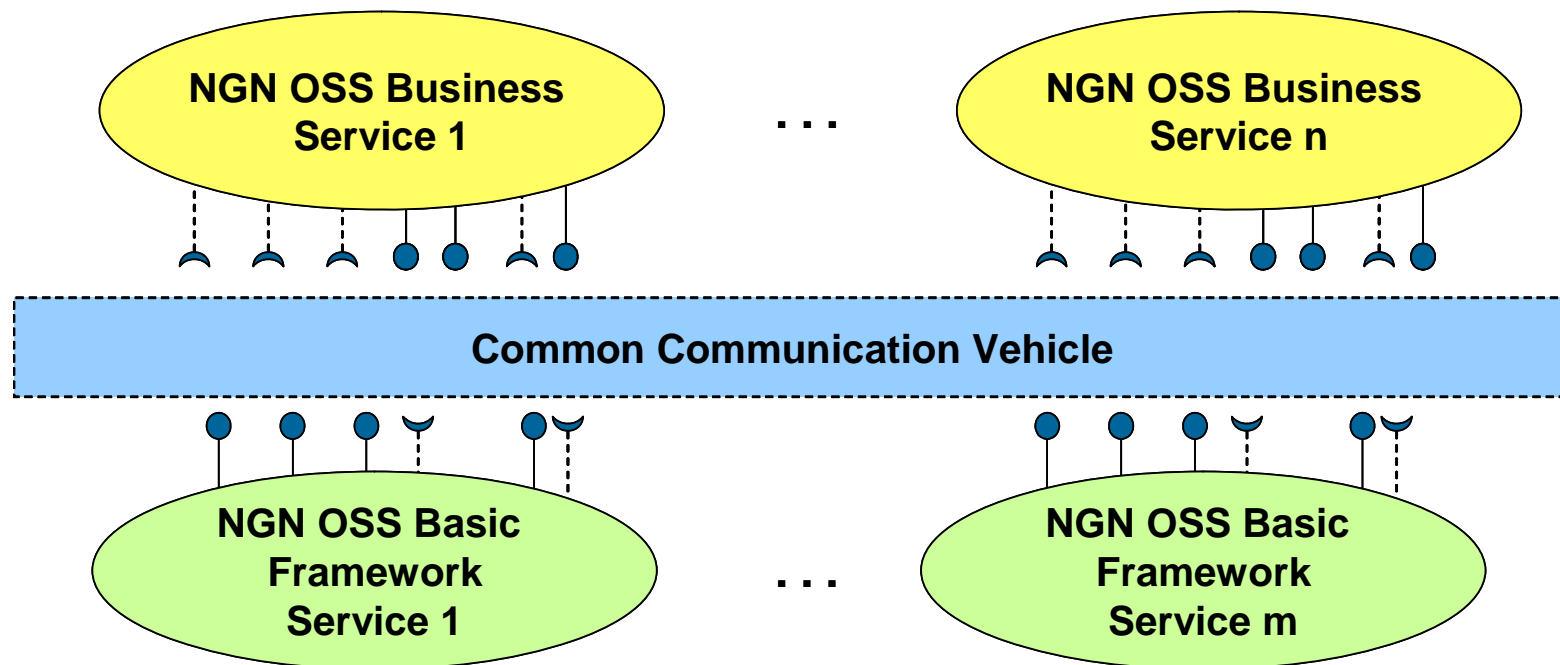


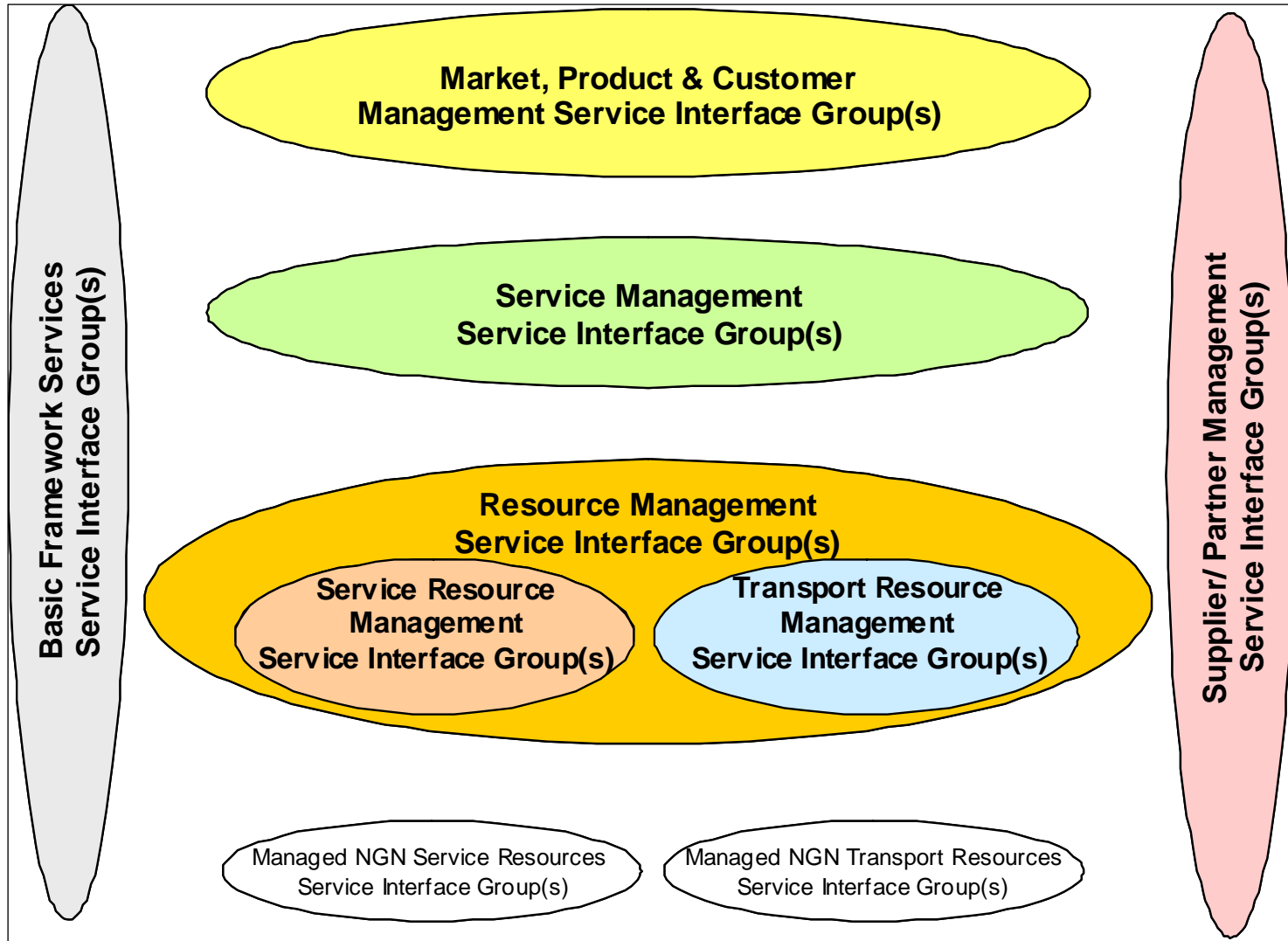
- General: ETSI Competence Centre for Telecommunications Management
- Specific: Responsible for producing Management Specifications for TISPAN
- Delegates from Network Operators and Suppliers
- Main areas of interest:
  - NGN Management
  - Equipment Management

- o NGN Management Specifications
  - Management Vision
  - Management Requirements
  - NGN Management Standards Overview and Gap Analysis
  - NGN OSS Architecture



- o Architecture
  - Service Oriented Architecture (OASIS)
  - Based on TM Forum eTOM & NGOSS principles
- o Reuse of existing work
  - 3GPP (IMS)
  - TM Forum (MTNM/MTOSI/IPNM)
  - ITU-T



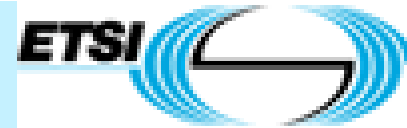


- o Equipment Management Specifications
  - Equipment Identification
  - Equipment Information in the MIB
  - Telecommunication Equipment Life Cycle
  - Overview of RFID Tags in the Telecoms Industry



ITU-T

# WG8 Current Work



- o NGN Management
  - Management Information Model
  - Network Resource Model
  - Subscription Management