

ITU-T NGN Technical Workshop

14 ~ 15, March, 2005

5th FGNGN

16~22, March, 2005

Jeju Lotte Hotel, Jeju, Korea

Co-Organized by:

ITU-T: International Telecommunication Union -Telecommunication Standardization Sector

BcN Engineering Research Center: Information and Communications University

Next-generation Internet Research Center: Korea University

Center for RFID/USN Technology: Yonsei University

Hosted by:

ETRI (Electronics and Telecommunications Research Institute)

TTA (Telecommunications Technology Association)

OSIA (Open Standards and Internet Association)

Sponsored by:

KT (Korea Telecom)

NCA (National Computerization Agency)

ITU-T NGN Technical Workshop

& 5th FGNGN

Workshop Secretariat

ITU-T
Xiaoya Yang
Workshops coordinator
ITU, Place des Nations, 1211 Geneva 20,
Switzerland
Tel. +41 22 7306206
Fax: +41 22 730 5853
Email: tsbworkshops@itu.int

TTA
Youngjae Kim (Michael)
Phone: 82-31-724-0195
FAX : 82-31-724-0119
Cell : 82-11-9727-0456
Email: yjkim@tta.or.kr

Youngshin Kim (Ally)
Tel: +82-2-569-5802
Fax: +82-2-569-5803
Email: ally@meci.co.kr

Contents

Contents

Program at a Glance

Workshop Program

Floor Plan

Registration

Accommodation

Tour Program

Jejul, Korea

Transportation to the Venue

Program at a Glance

Date	Mar. 14 (Mon)	Mar. 15 (Tue)	Mar. 16 (Wed)	Mar. 17 (thu)	Mar. 18 (Fri)	Mar. 21 (Mon)	Mar. 22 (Tue)
Time	ITU-T NGN Technical Workshop		5th FGNGN				
8:00	NGN Tech. Workshop Registration		FGNGN Registration				
8:30							
9:00	Opening	Keynote 4	Plenary	WG 1-7	WG 1-7	WG 1-7	Plenary
9:30	Plenary (Keynote 1~3)	Session IV					
10:00							
10:30	Coffee Break	Coffee Break					
11:00	Session I	Coffee Break	Plenary	WG 1-7	WG 1-7	WG 1-7	Plenary
11:30		Session V					
12:00							
12:30	Lunch	Lunch	Lunch				
13:00							
13:30							
14:00	Session II	Session VI	WG 1-7	WG 1-7	WG 1-7	WG 1-7	Plenary
14:30							
15:00							
15:30	Coffee Break	Coffee Break	Coffee Break				
16:00	Session III	Session VII	WG 1-7	WG 1-7	WG 1-7	WG 1-7	Plenary
16:30							
17:00							
17:30							
18:00							
18:30	Coffee Break	Management Meeting	Welcome Dinner				
19:00	Welcome Dinner						
19:30							
20:00							
20:30							
21:00							

* Official Language: English

Workshop Program

Monday, March 14

09:00-10:30

Plenary

Chair: Hong Shik Park (ICU)

09:00-09:20

Opening Address
Chul Hee Kang (Korea University)

09:20-09:30

Break

09:30-09:50

Keynote 1

Speaker: Seok Jin Seo (MIC)
Title: BcN Deployment Strategies in Korea

09:50-10:10

Keynote 2

Speaker: Arshey Odedra (ITU TSB)
Title: ITU Standardization and its new Environment

10:10-10:30

Keynote 3

Speaker: Chae Sub Lee (Chairman of FG NGN)
Title: NGN Focus Group Activities

11:00-12:30

Session 1

NGN Framework and Architecture

Chair: Khalid Ahmad (Canada)

11:00-11:30

Session 1-1

Speaker: Keith G Knightson (Industry Canada)
Title: Basic NGN Architecture & Principles

11:30-12:00

Session 1-2

Speaker: Jun Kyun Choi (ICU)
Title: Toward Carrier's NGN Architecture

12:00-12:30

Session 1-3

Speaker: Thomas Towle (Lucent Technologies)
Title: IMP in Next Generation Networks
-The IP Multimedia Subsystem-

14:00-15:30

Session 2

NGN Services

Chair: Ghassem Koleyani (Nortel Networks)

14:00-14:30

Session 2-1

Speaker: Marco Carugi (Nortel Networks Europe)
Title: Requirements and Capabilities for NGN Services

14:30-15:00 Session 2-2
Speaker: Dick Knight (BT Group plc)
Title: Services and Related Issues of NGN Standards Activities

15:00-15:30 Session 2-3
Speaker: Hong Beom Jeon (KT)
Title: BcN Convergence Services

**16:00-18:30 Session 3
Small Group Discussion 1**

16:00-17:30 Session 3-1
NGN Framework and Architecture
Chair: Khalid Ahmad (Canada)

16:00-17:30 Session 3-2
NGN Services
Chair: Ghassem Koleyni (Nortel Networks)

17:40-17:50 Summary of Group 1 Discussion
17:50-18:00 Summary of Group 2 Discussion
18:00-18:30 Open Discussion

Tuesday, March 15

09:00-09:30
Chair:

09:00-09:30 Keynote 4
Speaker: Jong Lok Yoon (KT)
Title: The Octave Project

**09:30-11:00 Session 4
NGN Applications**
Chair: Duo Liu (MII)

09:30-10:00 Session 4-1
Speaker: Byung Keun Lim (LG)
Title: End User Applications for NGN

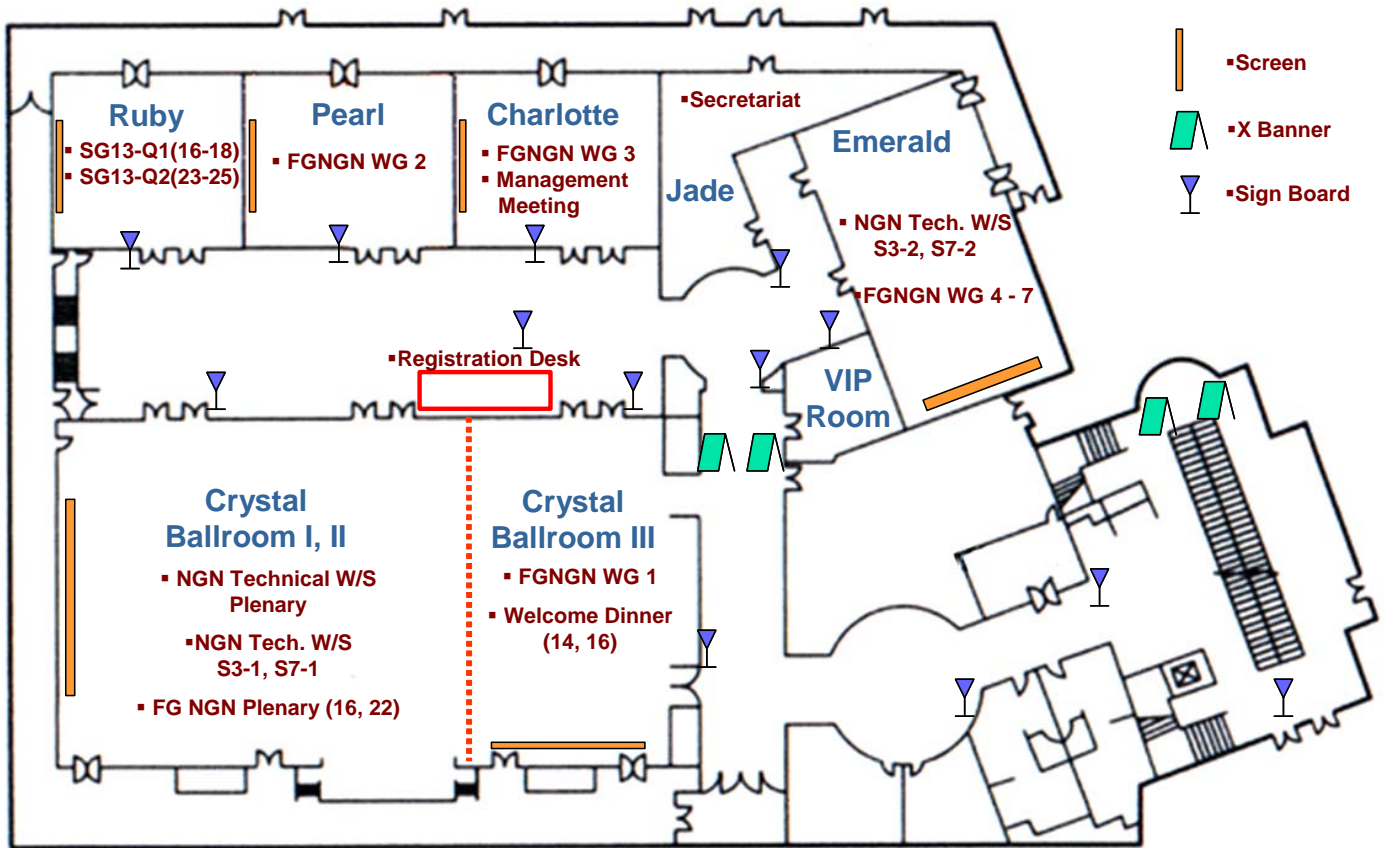
10:00-10:30 Session 4-2
Speaker: Jihun Cha (ETRI)
Title: IP TV and DMB Services for NGN

10:30-11:00 Session 4-3
Speaker: Akihiro Tsutsui (NTT)
Title: Management Architecture and Distribution Framework for Home
Network Services

- 11:10-12:40 Session 5
NGN Technology 1**
Chair: Dick Knight (BT Group plc)
- 11:10-11:40 Session 5-1
Speaker: Helmut Schink (Siemens)
Title: Market Feasibility of NGN Technology
- 11:40-12:10 Session 5-2
Speaker: Sung Back Hong (ETRI)
Title: QoS-based Manageable NGN Architecture
- 12:10-12:40 Session 5-3
Speaker: Ghassem Koleyani (Nortel Networks)
Title: PSTN/ISDN Evolution to NGN
- 14:00-15:30 Session 6
NGN Technology 2**
Chair: Neal Seitz (ITS)
- 14:00-14:30 Session 6-1
Speaker: Hui-Lan Lu (Lucent Technologies)
Title: NGN QoS
- 14:30-15:00 Session 6-2
Speaker: Khalid Ahmad (Canada)
Title: NGN Naming, Address and Identification
- 15:00-15:30 Session 6-3
Speaker: Tae Sang Choi (ETRI)
Title: Accounting, Charging and Billing for NGN Services and Network
- 16:00-18:30 Session 7
Small Group discussion 2**
- 16:00-17:30 Session 7-1
NGN Applications
Chair: Duo Liu (MII)
- 16:00-17:30 Session 7-2
NGN Technology
*Chairs: Dick Knight (BT Group plc)
 Neal Seitz (ITS)*
- 17:40-17:50 Summary of Group 1 Discussion
17:50-18:00 Summary of Group 2 Discussion
18:00-18:30 Open Discussion

** FGNGN Program will be announced onsite*

Floor Plan



Registration

Registration Desk

The Registration Desk at the Jeju Lotte Hotel will be open to assist you with registration and information throughout the Workshop. Service hours and areas are as follows:

Workshop	Date & Time	Area
NGN Tech. Workshop	March 14 (Monday) 08:00 – 09:00	in front of Crystal Ballroom
FGNGN	March 16 (Wednesday) 08:00 – 09:00	in front of Crystal Ballroom

Registration services are available at the secretariat office (Jade, 6F) other than specified time.

Check In & Badge Distribution

All attendees are required to check in at the Registration Desk at the Jeju Lotte Hotel. Each registered participant will receive a name badge and a Workshop souvenir including other information.

Participants are kindly reminded to wear name badges at all times during the workshop.

The badges are required for admission to all sessions.

ITU-T NGN Technical Workshop

Date: March 14 ~ March 15, 2005

Online Registration route: <http://www.itu.int/ITU-T/worksem/ngntech/registration.html>

NGN Website: <http://www.itu.int/ITU-T/worksem/ngntech/index.html>

<http://www.bcn-itrc.org/>

5th FGNGN

Date: March 16 ~ March 22, 2005

Online Registration route: <http://www.itu.int/ITU-T/ngn/edh/registration.html>

FGNGN Website: <http://www.itu.int/ITU-T/ngn/fgngn/index.html>

Accommodation

Hotel Rate

Hotel	Room		Fare	
			Fare for mountain view	Fare for ocean view
Jeju Lotte Hotel	W/O breakfast (for 1 or 2 persons)	Single bed	US \$135	US \$195
		Double bed		
		Twin bed		
Jeju Lotte Hotel	With breakfast (for 1 person)	Single bed	US \$155	US \$215
		Double bed		
		Twin bed		
Jeju Lotte Hotel	With breakfast (for 2 persons)	Double bed	US \$178	US \$238
		Twin bed		
Hana Hotel	With breakfast	Single bed	US \$70	-
		Double/Twin bed	US \$80	-
Hankook Condominium	1 to 5 persons in one apartment (two rooms and one bed in each apartment)		US \$66	-

Hotel Information

1. Lotte Hotel Jeju



The Lotte Hotel Jeju is renowned as the best hotel "A Palace of Romance and Dreams" in Korea. It is a total tourism resort complex and offers 500 guest rooms interestingly combining the traditional beauty of Korea and the fascinating ambiance of the Lost City Hotel in South Africa. At the Lotte Hotel Jeju, you will find restaurants where you can enjoy various delicacies from around the world, while gazing out on the distant Southern Sea, and you will also find a Fitness center, duty free shop and the largest convention center in Jeju. (www.lottehotel.co.kr)

Tel: +82-64-731-1000

2. Hotel Hana



Entering Hana Hotel, you can feel the hearty welcome of the Korean hospitality. It is Hana service spirit to care each individual guest for utmost comforts. Hana Hotel is surrounded by many attractions such as 36 hole golf-course, Halla Mountain, ocean sports, and beautiful beaches.

(www.hotelhana.co.kr)

Tel: +82-64-738-7001

3. Korea Condo



Ideally located in the heart of Joong-mun Tourist Complex, the Korea Condominium is the finest condominium in Korea with traditional beauty of Korea. As first condominium in Korea, Korea Condominium provides the utmost comfort and convenience like being home with the slogan that Korea condo suggests full refunds if guests find service member with no smiles. During the stay, you find the best service and hospitality from us.

Tour Program

The Tour Desk at the Jeju Lotte Hotel will be open to assist you with tour program and general information from 14 March ~ 18 March. Please apply to join the free tour program on 19 March, 2005.

Date	Place	Vehicle	Time	Details
March 19	Jungmun	Exclusive	12:30	Meet at Front desk of your hotel
		Bus	13:50-14:50	Bijarim(Forest)
	Seongsan		15:10-16:10	Seongsan Ilchulbong
			17:10-18:10	Cheonjiyeon Waterfall
	Jungmun		18:30	Return to Hotel

<The schedule can be changed according to circumstances>



Bijarim Forest : This forest of some 2,500 *Torreya nucifera* from 300-600 years old, is said to be the best area in the world for a single species of trees growing so densely.

Because they are evergreens, people can enjoy this dense forest all year round. Several rare parasitic plants grow on the trees.

The quality of the wood is excellent. It was used for high-class furniture and material for checker boards. Its fruits are widely used for medicinal purposes and food.

Seongsan Ilchul-bong: The Peak is a volcanic crater perched out on the eastern tip of Jeju Island and is one of the ten most spectacular scenes of Jeju. The views of sunrising in the early morning are breathtaking at the summit. The peak is 182m above sea level. The rim of the crater is adorned with 99craggy rock pinnacles reminiscent of a king's crown. This is a province-designated Natural Monument No.36.

Every New Year's Eve, people come together to celebrate rising the sun with wishing a happy new year and great fortune

Cheonjiyeon Waterfall : Local myths claim that heavenly beings descended and visited this waterfall to bathe and play. The site is surrounded by verdant sub-tropical vegetation, and the waterfall cascading from the high cliff is a picturesque scene.

Jeju, Korea

Korea

Korea is proud of 5,000 years of history through which a unique culture has flourished. Modern Korea is a nation that has rebuilt itself from the devastation of the Korean war and has achieved an economic miracle in just 50 years. The Korean peninsula extends southward from the eastern end of the Asian continent and is approximately 1,000 km long and 216 km wide at its narrowest point.



Jeju

Jeju is the largest island in Korea and is located in the Pacific Ocean just off south-western tip of the Korean Peninsula. Jeju is a volcanic island with a mountainous terrain, dramatic rugged coastline and spectacular watershed courses. The island has a unique culture as well as natural beauty. It is a living folk village, with approximately 5.4 hundred thousand people. As a result of its isolated location and romantic tropical image, Jeju has become a favorite retreat with honeymooners and tourists. The tour programs of the workshop will also provide participants with the opportunity to feel and enjoy some of the island's fascinating attractions.





Jeju island has a mild oceanic climate throughout the year with the smallest annual temperature range in the country. The temperature for the hottest summer months averages no more than 33.5°C (92.3°F) and no less than 1.0°C (33.8 °F) for winter.

The island is 73Km wide and 41Km long with a total area of 1,845 km². Jeju island, the largest island in Korea, came into existence 700 to 1,200 thousand years ago when lava spewed from a sub-sea volcano and surfaced above the waters. Then 100 to 300 thousand years ago. Another volcanic eruption that formed Mt. Halla. The final volcanic eruption that took place approximately 25 thousand years ago created the crater lake, Baekrok-dam, at the summit of the mountain.

Mt. Halla rises in the center of Jeju island to 1950m above sea level. The rest of the island slopes down from its summit and is covered with dark gray volcanic rocks and volcanic ash soil. Relatively isolated from the rest of the world, the island's nature has been well preserved in its prehistoric state. That is why to traveling to Jeju Island is to travel back in time.



Jeju's natural environment was preserved as best as possible. The fantastically shaped rocks decorating the seashores, the hundreds of Oreums(secondary volcano) and the rarest species of flora around the Baekrok-dam lake are all treasures waiting to be discovered by visitors. One cannot see Jeju Island unless one looks. It is like seeing only trees before entering a forest.

Venue

The Workshop will take place at the Jeju Lotte Hotel at Seogwipo city in Jeju Island. The **Jeju Lotte Hotel** is located in the vicinity of Jungmun Tourist Resort Complex. The warm hospitality of Jeju islanders will be an added charm to the participants. This complex offers various fascinating activities, such as a visit to a Buddhist temple for tea and meditation. Other attractions in the complex include the wonderful places to enjoy fishing, scuba diving, and wind surfing during the summer. If you are looking for a place to play golf while enjoying the ocean view, you should fit golf time in your schedule during the workshop period. All the golf courses in Jeju Island boast excellent fairways, greens, and traps as well as superb clubhouse facilities. You can also get a glimpse of the Jeju culture at Jeju Folklore & Natural History Museum.

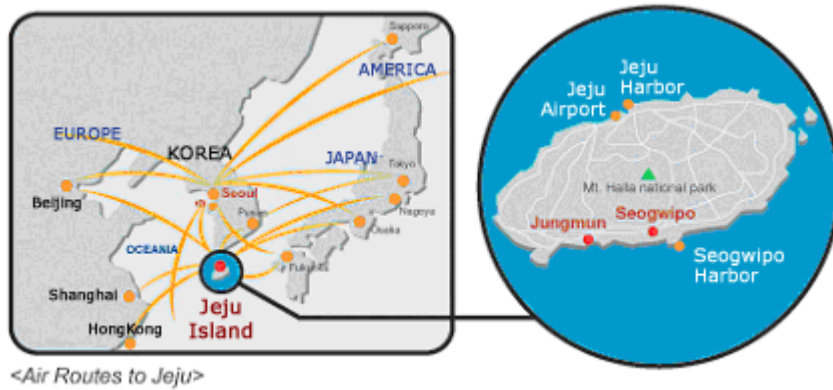


Official Invitation

An official letter of invitation will be forwarded to any participant upon request.

Transportation to the Venue

For those who get to Jeju from Seoul, your entry to Korea will be Incheon International Airport (ICN). There are only two Sunday afternoon flights from Incheon International Airport to Jeju. To take a domestic flight to Jeju, use Airport limousine from ICN to Gimpo Domestic Terminal, a 30-minute ride, every 10-15 minutes



1. From Incheon Int'l Airport to Jeju Int'l Airport

You may arrive at Incheon Int'l Airport, which is connected with the major cities in the world and go through immigration and custom clearance at the arriving terminal, and then take one of the following procedures.

- From Incheon Int'l Airport to Jeju Int'l Airport**
 Recheck to transfer on the 1st floor. Passengers are received their boarding passes, and board the domestic flight on the 3rd floor (Departure Level) in Incheon Int'l Airport (ICN) for Jeju International Airport (CJU).

Flight Schedule

From Incheon Int'l Airport to Jeju Int'l Airport	Day	Departure	Arrival	Flight No.	Airline
	Sun	17:50	18:55	KE 1423	Korean Air
	Sun	17:20	18:25	OZ 8551	Asiana Airlines

- From Incheon Int'l Airport to Jeju Int'l Airport via Gimpo Domestic Airport**
 After arriving at Incheon Int'l Airport, take a Limousine Bus to Gimpo Domestic Airport to take a local flight for Jeju Int'l Airport. Non-stop Limousine buses from ICN to Gimpo Airport (GMP) leave from bus stops number 3B, 4B, 10B, 11A in ICN every 5 to 10

minutes from 05:20 to 21:30. The fare is 6,000 Korean Won per person. The ride usually takes about 30 minutes.

The flights to and from Gimpo Domestic Airport (GMP) and Jeju International Airport (CJU) run between 06:35 to 21:50 at roughly 15 minute intervals. There are approximately 80 domestic flights (daily-38 domestic flights) for this route.

2. From Japan, China to Jeju Int'l Airport (CJU)

You may take a direct flight to Jeju International Airport. Participants from Japan departing from Tokyo, Osaka, Nagoya and Fukuoka, and those from China departing from Shanghai, Beijing can take a direct flight to Jeju International Airport.

From Incheon International Airport to Jeju International Airport Directly

Point of Depart	Days	Departure	Arrival	Flight No.	Airline
Beijing	Mon, Fri	10:40	14:00	KE 856	Korean Air
Fukuoka	Wed	10:00	11:05	OZ 135	Asiana Airlines
	Fri, Sun	12:00	13:05		
Nagoya	Mon	10:00	12:05	KE 756	Korean Air
	Wed, Fri	18:00	20:00	KE 756	Korean Air
Osaka	Fri	9:10	11:00	OZ 137	Asiana Airlines
	Mon	9:50	11:40		
	Mon, Tue, Thu, Fri	9:15	11:00	KE 734	Korean Air
	Sat	16:05	17:50		
Shanghai	Fri	16:00	18:00	OZ 380	Asiana Airlines
	Tue, Thu, Sat	18:30	8:30	MU 273	China Eastern Airlines
	Mon, Wed, Fri, Sun			MU 2181	
Tokyo	Mon, Wed, Fri, Sat,	9:45	12:35	KE 718	Korean Air

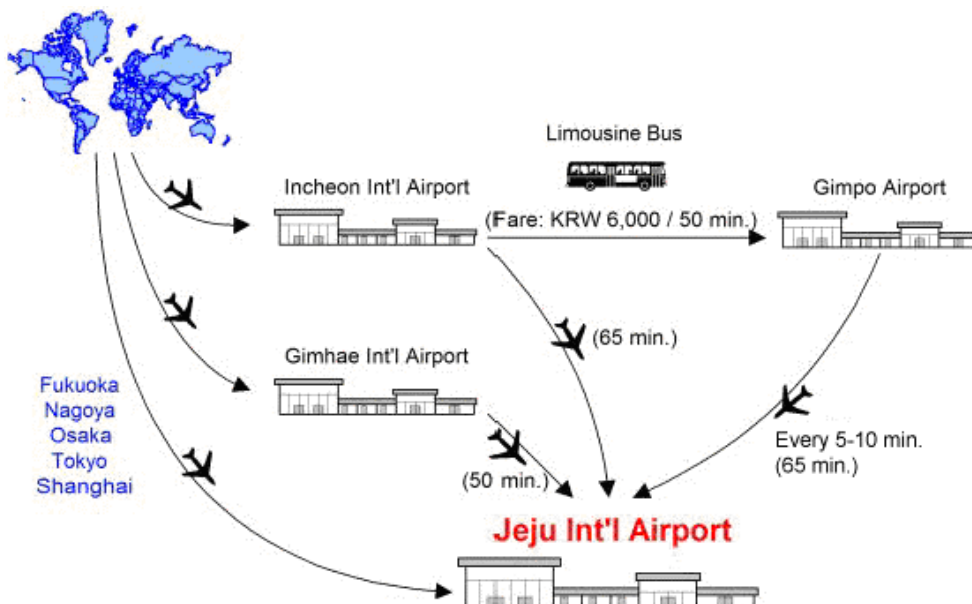
3. From Jeju Int'l Airport to Japan, China

Destination	Days	Departure	Arrival	Flight No.	Airline
Beijing	Mon, Fri	7:50	9:30	KE 855	Korean Air
Fukuoka	Fri, Sun	10:00	11:00	OZ 136	Asiana Airlines
	Tue	18:30	19:30		
Nagoya	Wed, Fri	15:20	17:00	KE 755	Korean Air
	Sun	17:30	19:10		
Osaka	Thu, Sun	18:30	20:00	OZ 138	Asiana Airlines
	Sat	13:40	15:05	KE 733	Korean Air
Shanghai	Mon, Wed, Thu, Sun	18:25	19:50	MU 273 MU 2181	China Eastern Airlines
	Fri	14:20	14:30		
	Tue, Thu, Sat	21:30	21:30		
Tokyo	Mon, Wed, Fri, Sun	18:10	20:30	KE 717	Korean Air

4. From Jeju Int'l Airport to Each Hotel

Limousine bus runs from Jeju International Airport to Seogwipo area every 12~15 minutes (06:20~22:00). The bus No. is 600 and you can take it at Gate No.1. It stops at the Jeju International Airport, Sinjeju, major hotels in Jungmun Resort and Seogwipo. The fare is KRW 3,900(to Joongmun Resort), 5,000(to Seogwipo).

* Note: Taxi fare from Jeju International Airport to each Hotel is subject to metric fare and that is added an extra-fare of 20% from midnight to 4a.m.



Passports and Visas

Foreigners wishing to visit the Republic of Korea should obtain a valid passport. Visitors with confirmed round-tickets can stay for 30 days without visas. However, visitors from some countries should obtain an entry visa before coming to Korea. When uncertain as to the requirement for entry visa to Korea, please contact the Korean embassy or a consulate as early as possible. If you are in need of an individual invitation to FGNGN & NGN Technical Workshop, please contact the workshop secretariat.

Currency

The unit of Korean currency is the won. Foreign bank notes and traveler's checks can be converted into Korean won at banks, the bank windows located throughout the lobby of Airport, and at major hotels. Be sure to keep your receipt when you exchange money, so you can convert it back when you leave Korea. Internationally recognized credit cards including VISA, American Express, Diner's Club, Master card, and JCB card are accepted at most hotels, department stores, and restaurants. U.S. dollar 1 is approximately equivalent to Korean won 1,100 (February, 2005)

Gratuities

Tipping is not a traditional Korean custom. A 10% service charge will be added to your bill at all tourist restaurants and hotels. It is also not necessary to tip a taxi driver unless he assists you with luggage or provides an extra service.

Insurance

The Organizing Committee will accept no liability for personal injuries sustained by or for loss or damage to property belonging to workshop participants, either during or as a result of the workshop or during all tours. It is, therefore, recommended that participants arrange their own personal health, accident and travel insurance.

Climate

Jeju has a mild oceanic climate throughout the year with the smallest annual temperature range in the country. It has four distinctive seasons and the average temperature in March is 15°C ~ 16°C (59°F ~ 60°F)

Electricity

In Korea, two outlets for both 110 and 220 volts AC/60 Hz are available. Always check the power supply before using equipment.