

**ITU Forum on Conformance and Interoperability for  
the Americas Regions  
Brasilia, Brazil, 12-15 June 2012**

## **Accreditation Bodies**

**Presented by  
Andrew Kwan  
ITU Consultant**



<sup>1</sup>  
Brasilia, Brazil, 12-15 June 2012

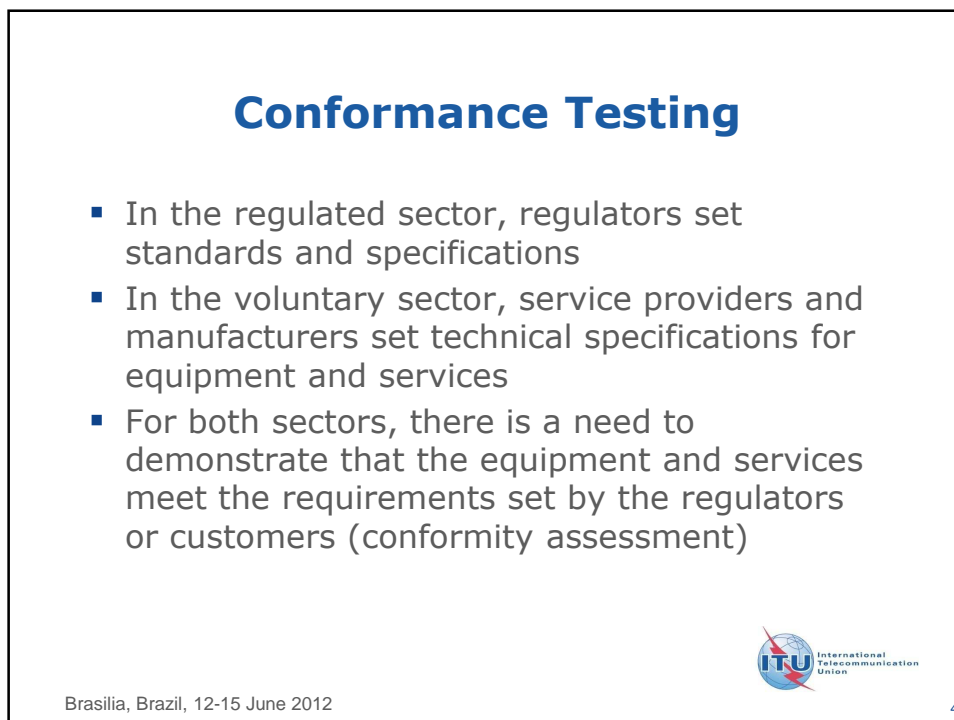
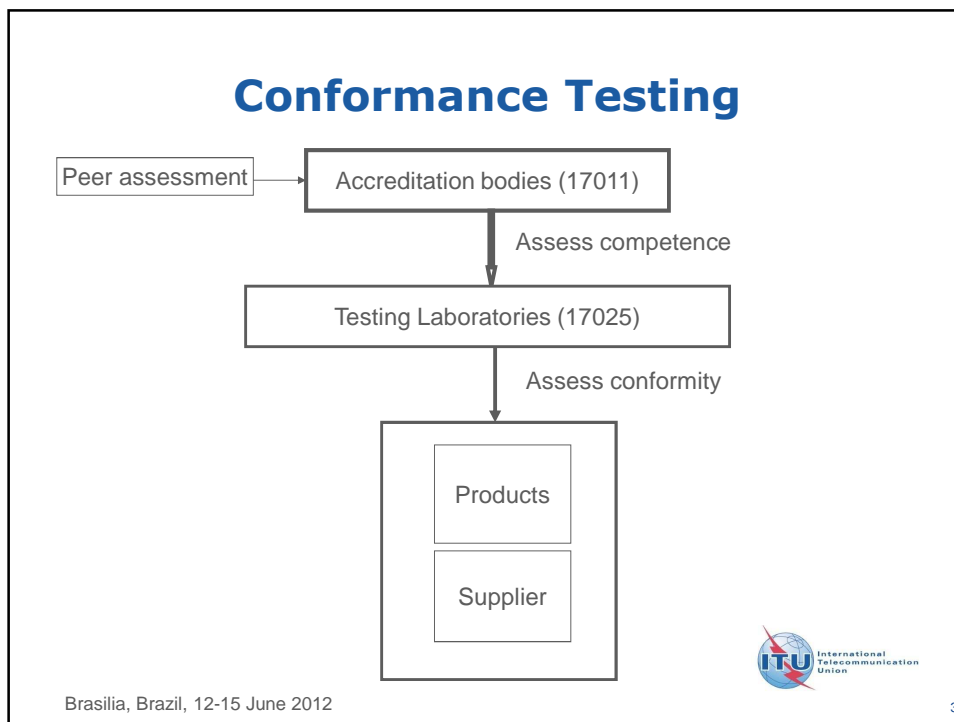
## **PRESENTATION OVERVIEW**

- **Conformance Testing**
- **National Accreditation Bodies**
- **International organizations**
  - **International Laboratory Accreditation Cooperation (ILAC)**
  - **International Accreditation Forum (IAF)**
- **Regional Accreditation Bodies**



Brasilia, Brazil, 12-15 June 2012

2



## Conformance Testing

- Testing performed by testing laboratories is an important part of the conformity assessment process
- To demonstrate it is competent in its tasks a testing laboratory has to be accredited to comply with ISO/IEC 17025



Brasilia, Brazil, 12-15 June 2012

5

## Conformance Testing

- Accreditation is the third party attestation related to a conformity assessment body (e.g. a testing laboratory) conveying formal demonstration of its competence to carry out specific conformity assessment tasks (e.g. testing). The requirement for a testing laboratory is ISO/IEC 17025
- Accreditation is performed by accreditation bodies which have to comply with ISO/IEC 17011



Brasilia, Brazil, 12-15 June 2012

6

## National Accreditation Bodies

- First comprehensive Laboratory Accreditation program was established in Australia in 1947, the National Association of Testing Laboratory (NATA)
- Similar programs were established in the United Kingdom, United States, France, Canada, Denmark, Sweden and Germany in the 1980s



Brasilia, Brazil, 12-15 June 2012

7

## National Accreditation Bodies

- Accreditation bodies are appointed by national governments
- To demonstrate that it is competent to perform its tasks, an accreditation body has to be ISO/IEC 17011 compliant
- There is no higher level body in the conformity assessment structure to assess the compliance of accreditation bodies with ISO/IEC 17011



Brasilia, Brazil, 12-15 June 2012

8

## National Accreditation Bodies

- Peer assessment mechanisms have been created at regional and international levels to provide assurance that accreditation bodies are operating in accordance with ISO/IEC 17011



Brasilia, Brazil, 12-15 June 2012

9

## International Organizations

### ❖ International Laboratory Accreditation Cooperation (ILAC)

- Started in 1977 as a conference
- Became a formal cooperation with a charter to establish a network of mutual recognition agreements among accreditation bodies in 1996
- On 2 November 2000, 36 accreditation bodies, full members of ILAC, from 28 countries worldwide signed the "ILAC Mutual Recognition Arrangement" (often referred to as the ILAC Arrangement)



Brasilia, Brazil, 12-15 June 2012

10

## International Organizations

### ❖ International Laboratory Accreditation Cooperation (ILAC)

- At present, there are 72 accreditation bodies signatories (full members) from 59 countries
- The purpose of ILAC Arrangement is to develop a global network of accredited testing and calibration laboratories that are assessed and recognized as being competent by ILAC Arrangement signatory accreditation bodies



Brasilia, Brazil, 12-15 June 2012

11

## International Organizations

### ❖ International Laboratory Accreditation Cooperation (ILAC)

- The signatories have been peer-assessed and shown to meet ILAC's criteria for competence.
- Each signatory to the ILAC Arrangement agrees to:
  - Maintain conformance with the current version of ISO/IEC 17011, related ILAC guidance documents, and a few, but important, supplementary requirements, and
  - Ensure that all accredited laboratories comply with ISO/IEC 17025 or ISO 15189 (for medical testing laboratories) and related ILAC policy and guidance documents.



Brasilia, Brazil, 12-15 June 2012

12

## International Organizations

### ❖ International Laboratory Accreditation Cooperation (ILAC)

- Peer evaluation of signatory involves a team of peers (generally senior staff of experienced accreditation bodies). Evaluations include:
  - Time spent at the headquarters office of the applicant body to determine compliance with ISO/IEC 17011
  - The evaluators witness the performance of the applicant's assessors during actual assessments/reassessments to determine if the laboratories are in compliance with ISO/IEC 17025



Brasilia, Brazil, 12-15 June 2012

13

## International Organizations

### ❖ International Laboratory Accreditation Cooperation (ILAC)

- Other memberships includes:
  - Formally established Regional Accreditation Cooperations having objectives similar to and compatible with ILAC, which are committed to the obligations of the ILAC Mutual Recognition Arrangement and which consist of formally nominated representatives of the accreditation interests from at least four countries



Brasilia, Brazil, 12-15 June 2012

14

## International Organizations

### ❖ International Laboratory Accreditation Cooperation (ILAC)

- ILAC has 3 Recognized Regional Cooperation Bodies whose regional Mutual Recognition Arrangements (MRA) have been successfully peer-evaluated by ILAC
- Recognized Regional Cooperation Bodies are re-assessed every 4 years by ILAC



Brasilia, Brazil, 12-15 June 2012

15

## International Organizations

### ❖ International Laboratory Accreditation Cooperation (ILAC)

- The 3 ILAC Recognized Regional Cooperation Bodies are:
  - Asia Pacific Laboratory Accreditation Cooperation (APLAC)
  - European co-operation for Accreditation (EA), Secretariat
  - Inter American Accreditation Cooperation (IAAC), Secretariat
- Southern African Development Community in Accreditation (SADCA) is developing their MRA evaluation processes for recognition and approval by ILAC



Brasilia, Brazil, 12-15 June 2012

16



## International Organizations

### ❖ International Accreditation Forum (IAF)

- The primary purposes of IAF are:
  - To ensure that its accreditation body members only accredit bodies that are competent to do the work they undertake
  - To establish mutual recognition arrangements, known as Multilateral Recognition Arrangements (MLA), between its accreditation body members



Brasilia, Brazil, 12-15 June 2012

17

## International Organizations

### ❖ International Accreditation Forum (IAF)

- Scopes of MLA includes:
  - certification/registration of quality systems, products, services, personnel, environmental management systems
- Accreditation body members of IAF are admitted to the IAF MLA after evaluation of their operations by a peer evaluation team which is charged to ensure that the applicant member complies fully with both the international standards and IAF requirements



Brasilia, Brazil, 12-15 June 2012

18

## International Organizations

### ❖ International Accreditation Forum (IAF)

- IAF evaluated and accepted the process and outcomes of the three Regional Accreditation Groups:
  - the European co-operation for Accreditation (EA)
  - the Pacific Accreditation Cooperation (PAC)
  - the InterAmerican Accreditation Cooperation (IAAC),
- Regional Accreditation Groups are evaluated every four years by the IAF.



Brasilia, Brazil, 12-15 June 2012

19

## International Organizations

### ❖ International Accreditation Forum (IAF)

- Membership of the IAF MLA is recognized as being satisfied by membership of any of the EA MLA, the PAC MLA or the IAAC MLA, within the appropriate scope.



Brasilia, Brazil, 12-15 June 2012

20

## International Organizations

### ❖ International Accreditation Forum (IAF)

- IAF MLA Signatories at 23 November 2010 is as follows:
  - Main scope of ISO/IEC 17021 and the sub-scope of ISO 9001: 3 Regional Accreditation Groups (EA, PAC & IAAC) and 46 Accreditation Bodies
  - Main scope of ISO/IEC 17021 and the sub-scope of ISO 14001: 2 Regional Accreditation Groups (EA & PAC) and 41 Accreditation Bodies
  - Main scope of ISO/IEC Guide 65: 2 Regional Accreditation Groups (EA & PAC) and 38 Accreditation Bodies



Brasilia, Brazil, 12-15 June 2012

21

## International Organizations

### ❖ Regional Accreditation Bodies

- It is costly to set up a national accreditation Bodies
- In addition to start up cost, there are operational costs which may not be recovered by accreditation fees
- Some regions are considering to set up Regional Accreditation Bodies



Brasilia, Brazil, 12-15 June 2012

22

## International Organizations

### ❖ Regional Accreditation Bodies

- Issues that the member states of the region need to agree on include:
  - The organizational form and statutes of the regional accreditation body
  - The registration of the regional accreditation body in one of the member states, and its governance structures and professional liability



Brasilia, Brazil, 12-15 June 2012

23

## International Organizations

### ❖ Regional Accreditation Bodies

- Issues that the member states of the region need to agree on include:
  - The joint short-term and-long term funding mechanisms
  - Recognition of the regional accreditation body as equivalent to a national accreditation body, especially in the administration of technical regulations



Brasilia, Brazil, 12-15 June 2012

24

## International Organizations

### ❖ Regional Accreditation Bodies

- Issues that the member states of the region need to agree on include:
  - Acceptance of the regional accreditation body as representing the individual states in international accreditation forums
  - A signatory of the mutual recognition arrangements of the IAF and ILAC



Brasilia, Brazil, 12-15 June 2012

25

## Accreditation Bodies

Thank you

Andrew Kwan  
kwanz@telus.net



Brasilia, Brazil, 12-15 June 2012

26