

Belize

**FOCAL POINT REGARDING CORRESPONDENCE ON THIS QUESTIONNAIRE
(PARTS I AND II)**

1. Mr./Ms SLUSHER CLIFFORD
Family Name First Name
2. Country BELIZE
3. Name of the Administration/Organization OFFICE OF TELECOMMUNICATION
4. Title DIRECTOR
5. Address P. O. Box 310
BELIZE CITY
BELIZE
6. Tel.: 501 2 24938 Fax: 501 2 24935 E-Mail: _____

To be returned no later than 31 January 2000 to:

ITU-D Study Groups Secretariat
Telecommunication Development Bureau
Fax: +41 22 730 54 84
E-Mail: devsg2@itu.int

Section IV – Table of Frequency Allocations (extract from the RR, 1998)

27.5-47 MHz

Read only			To be completed	
Allocation to services				
Region 1	Region 2	Region 3	National Allocation	Remarks
27.5-28	METEOROLOGICAL AIDS FIXED MOBILE		FIXED MOBILE	CHANNEL SPACING 10KHZ. LOWEST CHANNEL 27.415MHZ. HIGHEST CHANNEL - 27.995MHZ
28-29.7	AMATEUR AMATEUR-SATELLITE		AMATEUR AMATEUR-SATELLITE	
29.7-30.005	FIXED MOBILE		FIXED MOBILE	
30.005-30.01	SPACE OPERATION (satellite identification) FIXED MOBILE SPACE RESEARCH		REMOTE CONTROL TELEMETRY	REMOTE CONTROL 10KHZ CHANNEL SPACING 30.020 - 30.270. TELEMETRY 30.200 - 30.290
30.01-37.5	FIXED MOBILE		FIXED MOBILE	RESERVED
37.5-38.25	FIXED MOBILE Radio astronomy S5.149		FIXED MOBILE TELEMETRY ON A SECONDARY BASIS	RESERVED
38.25-39.986	FIXED MOBILE		FIXED MOBILE	RESERVED
39.986-40.02	FIXED MOBILE Space research		FIXED MOBILE	RESERVED
40.02-40.98	FIXED MOBILE S5.150		INDUSTRIAL SCIENTIFIC AND MEDICAL APPLICATIONS (ISM)	CENTER FREQUENCY 40.680. AND REMOTE CONTROL CHANNELS 40.665, 40.675, 40.685 40.695

Read only			To be completed	
Allocation to services				
Region 1	Region 2	Region 3	National Allocation	Remarks
40.98-41.015	FIXED MOBILE Space research S5.160 S5.161		FIXED MOBILE	RESERVED
41.015-44	FIXED MOBILE S5.160 S5.161		FIXED MOBILE	RESERVED
44-47	FIXED MOBILE S5.162 S5.162A		FIXED LAND MOBILE	CORDLESS TELEPHONES ON A SECONDARY BASIS

47-75.2 MHz

47-68 BROADCASTING S5.162A S5.163 S5.164 S5.165 S5.169 S5.171	47-50 FIXED MOBILE	47-50 FIXED MOBILE BROADCASTING	FIXED LAND MOBILE	CORDLESS TELEPHONES ON A SECONDARY BASIS
	50-54 AMATEUR S5.166 S5.167 S5.168 S5.170		AMATEUR	
	54-68 BROADCASTING Fixed Mobile S5.172	54-68 FIXED MOBILE BROADCASTING	BROADCASTING T.V.	T.V. CHANNEL 2-4

Read only			To be completed	
Allocation to services				
Region 1	Region 2	Region 3	National Allocation	Remarks
68-74.8 FIXED MOBILE except aeronautical mobile S5.149 S5.174 S5.175 S5.177 S5.179	68-72 BROADCASTING Fixed Mobile S5.173	68-74.8 FIXED MOBILE S5.149 S5.176 S5.179	BROADCASTING	TV CHANNEL 2-4
	72-73 FIXED MOBILE		FIXED LAND MOBILE	
	73-74.6 RADIO ASTRONOMY S5.178		RADIO ASTRONOMY	NO INTERFERENCE SHALL BE CAUSED TO THIS SERVICE
	74.6-74.8 FIXED MOBILE		GUARDBAND FOR AERONAUTICAL MARKER BEACON.	NO ASSIGNMENT SHALL BE MADE IN THIS BAND.
74.8-75.2	AERONAUTICAL RADIONAVIGATION S5.180 S5.181		GUARDBAND FOR AERONAUTICAL MARKER BEACON	THE FREQUENCY 75 MHz IS ASSIGNED TO THIS SERVICE.

75.2-137.175 MHz

Read only			To be completed	
Allocation to services				
Region 1	Region 2	Region 3	National Allocation	Remarks
75.2-87.5 FIXED MOBILE except aeronautical mobile	75.2-75.4 FIXED MOBILE S5.179		FIXED LAND MOBILE	
	75.4-76 FIXED MOBILE	75.4-87 FIXED MOBILE	FIXED LAND MOBILE	
	76-88 BROADCASTING Fixed Mobile	S5.149 S5.182 S5.183 S5.188	BROADCASTING	T.V CHANNEL 5 AND 6
	S5.175 S5.179 S5.184 S5.187	87-100 FIXED MOBILE BROADCASTING		
87.5-100 BROADCASTING	S5.185			
S5.190	88-100 BROADCASTING		BROADCASTING	FM SERVICES
100-108	BROADCASTING S5.192 S5.194		BROADCASTING	F.M. SERVICES
108-117.975	AERONAUTICAL RADIONAVIGATION S5.197		AERONAUTICAL RADIONAVIGATION	
117.975-137	AERONAUTICAL MOBILE (R) S5.111 S5.198 S5.199 S5.200 S5.201 S5.202 S5.203 S5.203A S5.203B		AERONAUTICAL MOBILE	EMERGENCY FREQUENCY 121.500 MHZ AND AUXILIARY EMERGENCY FREQUENCY 123.100 MHZ

Read only			To be completed	
Allocation to services				
Region 1	Region 2	Region 3	National Allocation	Remarks
137-137.025	SPACE OPERATION (space-to-Earth) METEOROLOGICAL-SATELLITE (space-to-Earth) MOBILE-SATELLITE (space-to-Earth) S5.208A S5.209 SPACE RESEARCH (space-to-Earth) Fixed Mobile except aeronautical mobile (R) S5.204 S5.205 S5.206 S5.207 S5.208		METEOROLOGICAL SATELLITES. SPACE OPERATION AND RESEARCH.	
137.025-137.175	SPACE OPERATION (space-to-Earth) METEOROLOGICAL-SATELLITE (space-to-Earth) SPACE RESEARCH (space-to-Earth) Fixed Mobile-satellite (space-to-Earth) S5.208A S5.209 Mobile except aeronautical mobile (R) S5.204 S5.205 S5.206 S5.207 S5.208		METEOROLOGICAL SATELLITES. SPACE OPERATION AND RESEARCH.	
137.175-148 MHz				
137.175-137.825	SPACE OPERATION (space-to-Earth) METEOROLOGICAL-SATELLITE (space-to-Earth) MOBILE-SATELLITE (space-to-Earth) S5.208A S5.209 SPACE RESEARCH (space-to-Earth) Fixed Mobile except aeronautical mobile (R) S5.204 S5.205 S5.206 S5.207 S5.208		METEOROLOGICAL SATELLITES. SPACE OPERATION AND RESEARCH.	

Read only			To be completed	
Allocation to services				
Region 1	Region 2	Region 3	National Allocation	Remarks
137.825-138	SPACE OPERATION (space-to-Earth) METEOROLOGICAL-SATELLITE (space-to-Earth) SPACE RESEARCH (space-to-Earth) Fixed Mobile-satellite (space-to-Earth) S5.208A S5.209 Mobile except aeronautical mobile (R) S5.204 S5.205 S5.206 S5.207 S5.208		METEOROLOGICAL SATELLITES. SPACE OPERATION AND RESEARCH.	
138-143.6 AERONAUTICAL MOBILE (OR) S5.210 S5.211 S5.212 S5.214	138-143.6 FIXED MOBILE RADIOLOCATION Space research (space-to-Earth)	138-143.6 FIXED MOBILE Space research (space-to-Earth) S5.207 S5.213	FIXED LAND MOBILE	
143.6-143.65 AERONAUTICAL MOBILE (OR) SPACE RESEARCH (space-to-Earth) S5.211 S5.212 S5.214	143.6-143.65 FIXED MOBILE RADIOLOCATION SPACE RESEARCH (space-to-Earth)	143.6-143.65 FIXED MOBILE SPACE RESEARCH (space-to-Earth) S5.207 S5.213	FIXED LAND MOBILE	
143.65-144 AERONAUTICAL MOBILE (OR) S5.210 S5.211 S5.212 S5.214	143.65-144 FIXED MOBILE RADIOLOCATION Space research (space-to-Earth)	143.65-144 FIXED MOBILE Space research (space-to-Earth) S5.207 S5.213	FIXED LAND MOBILE	
144-146	AMATEUR S5.120 AMATEUR-SATELLITE S5.216		AMATEUR AMATEUR SATELLITE	144.000MHZ TO BE USED IN EVENT OF NATURAL DISASTER

Read only			To be completed	
Allocation to services				
Region 1	Region 2	Region 3	National Allocation	Remarks
146-148 FIXED MOBILE except aeronautical mobile (R)	146-148 AMATEUR S5.217	146-148 AMATEUR FIXED MOBILE S5.217	FIXED LAND MOBILE	
148-149.9 FIXED MOBILE except aeronautical mobile (R) MOBILE-SATELLITE (Earth-to-space) S5.209 S5.218 S5.219 S5.221	148-149.9 FIXED MOBILE MOBILE-SATELLITE (Earth-to-space) S5.209 S5.218 S5.219 S5.221		FIXED LAND MOBILE	
149.9-150.05	MOBILE-SATELLITE (Earth-to-space) S5.209 S5.224A RADIONAVIGATION-SATELLITE S5.224B S5.220 S5.222 S5.223		RADIONAVIGATION AND SATELLITE ON A PRIMARY BASIS	
150.05-153 FIXED MOBILE except aeronautical mobile RADIO ASTRONOMY S5.149	150.05-156.7625 FIXED MOBILE		FIXED LAND MOBILE MARITIME MOBILE CHANNELS 1-7. 60-66 DUPLEX TO 160.600-160.950 SHIP TRANSMITTER. SIMPLEX CH. 8-15 AND 67-74	GOVERNMENT- RESERVED FOR EMERGENCY FREQUENCY ON 150.750 MHZ FOR DISASTER MANAGEMENT
153-154 FIXED MOBILE except aeronautical mobile (R) Meteorological Aids				

Read only			To be completed	
Allocation to services				
Region 1	Region 2	Region 3	National Allocation	Remarks
154-156.7625 FIXED MOBILE except aeronautical mobile (R) S5.226 S5.227	S5.225 S5.226 S5.227			
156.7625-156.8375	MARITIME MOBILE (distress and calling) S5.111 S5.226		MARITIME MOBILE CHANNEL 16 (156.800MHz) GUARDBAND.	EMERGENCY AND CALLING CHANNEL.
156.8375-174 FIXED MOBILE except aeronautical mobile S5.226 S5.229	156.8375-174 FIXED MOBILE S5.226 S5.230 S5.231 S5.232		FIXED. MOBILE MARITIME MOBILE	SIMPLEX CHANNELS 17- 77. DUPLEX TO 16.500 162.025 SHIP TRANSMITTER CHANNELS 18-28 AND 78-88 PUBLIC CORRESPONDENCE CHANNEL DIVISION 25KHz FROM 157.450-157.950
174-223 BROADCASTING	174-216 BROADCASTING Fixed Mobile S5.234	174-223 FIXED MOBILE BROADCASTING	BROADCASTING	T.V. CHANNELS 7-13
S5.235 S5.237 S5.243	216-220 FIXED MARITIME MOBILE Radiolocation S5.241 S5.242	S5.233 S5.238 S5.240 S5.245	FIXED LAND MOBILE	

220-335.4 MHz

Read only			To be completed	
Allocation to services				
Region 1	Region 2	Region 3	National Allocation	Remarks
	220-225			
223-230 BROADCASTING Fixed Mobile S5.243 S5.246 S5.247	AMATEUR FIXED MOBILE Radiolocation S5.241	223-230 FIXED MOBILE BROADCASTING AERONAUTICAL RADIONAVIGATION Radiolocation S5.250	FIXED MOBILE AMATEUR	
	225-235 FIXED MOBILE			
230-235 FIXED MOBILE S5.247 S5.251 S5.252		230-235 FIXED MOBILE AERONAUTICAL RADIONAVIGATION S5.250	FIXED MOBILE	STUDIO TRANSMITTER LINK-CHANNEL DIVISION 200KHZ
235-267	FIXED MOBILE S5.111 S5.199 S5.252 S5.254 S5.256		FIXED MOBILE	RESERVED GUARDBAND FOR EMERGENCY BEACON 243.000MHZ DISTRESS CALL
267-272	FIXED MOBILE Space operation (space-to-Earth) S5.254 S5.257		FIXED MOBILE	
272-273	SPACE OPERATION (space-to-Earth) FIXED MOBILE S5.254		FIXED MOBILE	

Read only			To be completed	
Allocation to services				
Region 1	Region 2	Region 3	National Allocation	Remarks
273-312	FIXED MOBILE S5.254		FIXED MOBILE	
312-315	FIXED MOBILE Mobile-satellite (Earth-to-space) S5.254 S5.255		FIXED MOBILE	
315-322	FIXED MOBILE S5.254		FIXED MOBILE	
322-328.6	FIXED MOBILE RADIO ASTRONOMY S5.149		FIXED MOBILE	
328.6-335.4	AERONAUTICAL RADIONAVIGATION S5.258 S5.259		AERONAUTICAL RADIONAVIGATION ILS	GUIDE PATH TRANSMITTERS

335.4-410 MHz

335.4-387	FIXED MOBILE S5.254		RADIONAVIGATION- SATELLITE	
387-390	FIXED MOBILE Mobile-satellite (space-to-Earth) S5.208A S5.254 S5.255		RADIONAVIGATION SATELLITE	
390-399.9	FIXED MOBILE S5.254		RADIONAVIGATION SATELLITE	

Read only			To be completed	
Allocation to services				
Region 1	Region 2	Region 3	National Allocation	Remarks
399.9-400.05	MOBILE-SATELLITE (Earth-to-space) S5.209 S5.224A RADIONAVIGATION-SATELLITE S5.222 S5.224B S5.260 S5.220		RADIONAVIGATION SATELLITE	
400.05-400.15	STANDARD FREQUENCY AND TIME SIGNAL- SATELLITE (400.1 MHz) S5.261 S5.262		STANDARD FREQUENCY AND TIME SIGNAL SATELLITE (400.1 MHz)	
400.15-401	METEOROLOGICAL AIDS METEOROLOGICAL-SATELLITE (space-to-Earth) MOBILE-SATELLITE (space-to-Earth) S5.208A S5.209 SPACE RESEARCH (space-to-Earth) S5.263 Space operation (space-to-Earth) S5.262 S5.264		METEOROLOGICAL AIDS	
401-402	METEOROLOGICAL AIDS SPACE OPERATION (space-to-Earth) EARTH EXPLORATION-SATELLITE (Earth-to-space) METEOROLOGICAL-SATELLITE (Earth-to-space) Fixed Mobile except aeronautical mobile		METEOROLOGICAL AIDS	
402-403	METEOROLOGICAL AIDS EARTH EXPLORATION-SATELLITE (Earth-to-space) METEOROLOGICAL-SATELLITE (Earth-to-space) Fixed Mobile except aeronautical mobile		METEOROLOGICAL AIDS	
403-406	METEOROLOGICAL AIDS Fixed Mobile except aeronautical mobile		METEOROLOGICAL AIDS	
406-406.1	MOBILE-SATELLITE (Earth-to-space) S5.266 S5.267		FIXED SERVICE	RESERVED

Read only			To be completed	
Allocation to services				
Region 1	Region 2	Region 3	National Allocation	Remarks
406.1-410	FIXED MOBILE except aeronautical mobile RADIO ASTRONOMY S5.149		FIXED SERVICE	RESERVED

410-470 MHz

410-420	FIXED MOBILE except aeronautical mobile SPACE RESEARCH (space-to-space) S5.268		FIXED SERVICE FIXED MOBILE	RESERVED
420-430	FIXED MOBILE except aeronautical mobile Radiolocation S5.269 S5.270 S5.271		FIXED SERVICE FIXED MOBILE RADIO LOCATION	RESERVED
430-440 AMATEUR RADIOLOCATION S5.138 S5.271 S5.272 S5.273 S5.274 S5.275 S5.276 S5.277 S5.280 S5.281 S5.282 S5.283	430-440 RADIOLOCATION Amateur S5.271 S5.276 S5.277 S5.278 S5.279 S5.281 S5.282		FIXED SERVICE RADIO LOCATION AMATEUR SERVICE	RESERVED AMATEUR SERVICE SHARES THE BAND ON A SECONDARY BASIS
440-450	FIXED MOBILE except aeronautical mobile Radiolocation S5.269 S5.270 S5.271 S5.284 S5.285 S5.286		FIXED SERVICE LAND MOBILE SERVICE MOBILE TRANSMITTERS	RESERVED
450-455	FIXED MOBILE S5.209 S5.271 S5.286 S5.286A S5.286B S5.286C S5.286D S5.286E		LAND MOBILE SERVICE FIXED SERVICE	DUPLEX TO 460.000- 462.000 MHz RESERVED

Read only			To be completed	
Allocation to services				
Region 1	Region 2	Region 3	National Allocation	Remarks
455-456 FIXED MOBILE S5.209 S5.271 S5.286A S5.286B S5.286C S5.286E	455-456 FIXED MOBILE MOBILE-SATELLITE (Earth-to-space) S5.286A S5.286B S5.286C S5.209 S5.271	455-456 FIXED MOBILE S5.209 S5.271 S5.286A S5.286B S5.286C S5.286E	FIXED SERVICE	RESERVED
456-459	FIXED MOBILE S5.271 S5.287 S5.288		FIXED SERVICE	DUPLEX TO 466.000- 470.000 MHz
459-460 FIXED MOBILE S5.209 S5.271 S5.286A S5.286B S5.286C S5.286E	459-460 FIXED MOBILE MOBILE-SATELLITE (Earth-to-space) S5.286A S5.286B S5.286C S5.209 S5.271	459-460 FIXED MOBILE S5.209 S5.271 S5.286A S5.286B S5.286C S5.286E	FIXED SERVICE	
460-470	FIXED MOBILE Meteorological-Satellite (space-to-Earth) S5.287 S5.288 S5.289 S5.290		LAND MOBILE SERVICE FIXED FIXED SERVICE	DUPLEX TO 450.000- 452.000 MHz DUPLEX TO 456.000- 460.000 MHz RESERVED

470-890 MHz

Read only			To be completed	
Allocation to services				
Region 1	Region 2	Region 3	National Allocation	Remarks
470-790 BROADCASTING S5.149 S5.291A S5.294 S5.296 S5.300 S5.302 S5.304 S5.306 S5.311 S5.312	470-512 BROADCASTING Fixed Mobile S5.292 S5.293	470-585 FIXED MOBILE BROADCASTING S5.291 S5.298	BROADCASTING	T.V. CHANNELS 14-20
	512-608 BROADCASTING S5.297	585-610 FIXED MOBILE BROADCASTING RADIONAVIGATION S5.149 S5.305 S5.306 S5.307	BROADCASTING	T.V. CHANNELS 21-36
	608-614 RADIO ASTRONOMY Mobile-satellite except aeronautical mobile-satellite (Earth-to-space)	610-890 FIXED MOBILE BROADCASTING	RADIO ASTRONOMY	PROTECTION SHALL BE AFFORDED TO THIS RADIO SERVICE
	614-806 BROADCASTING Fixed Mobile S5.293 S5.309 S5.311		BROADCASTING	T.V. CHANNELS 38-69
790-862 FIXED BROADCASTING S5.312 S5.314 S5.315 S5.316 S5.319 S5.321	806-890 FIXED MOBILE BROADCASTING		TRUNKED MOBILE RADIO FIXED AND MOBILE CELLULAR RADIO SYSTEMS	RESERVED
862-890 FIXED MOBILE except aeronautical mobile BROADCASTING S5.322				

Read only			To be completed	
Allocation to services				
Region 1	Region 2	Region 3	National Allocation	Remarks
S5.319 S5.323	S5.317 S5.318	S5.149 S5.305 S5.306 S5.307 S5.311 S5.320		

890-1 350 MHz

890-942 FIXED MOBILE except aeronautical mobile BROADCASTING S5.322 Radiolocation S5.323	890-902 FIXED MOBILE except aeronautical mobile Radiolocation S5.318 S5.325	890-942 FIXED MOBILE BROADCASTING Radiolocation S5.327	FIXED AND MOBILE AERONAUTICAL RADIO MICROWAVE SECURITY SERVICES	
	902-928 FIXED Amateur Mobile except aeronautical mobile Radiolocation S5.150 S5.325 S5.326		FIXED AERONAUTICAL FIXED SERVICE	RESERVED RESERVED
	928-942 FIXED MOBILE except aeronautical mobile Radiolocation S5.325		FIXED SERVICE	RESERVED
942-960 FIXED MOBILE except aeronautical mobile BROADCASTING S5.322 S5.323	942-960 FIXED MOBILE	942-960 FIXED MOBILE BROADCASTING S5.320	FIXED SERVICE AERONAUTICAL RADIO NAVIGATION	RESERVED

QUESTIONNAIRE - PART II
(To be completed by Administrations only)

General Questions on National Spectrum Management

Describe succinctly the problems that your administration is currently experiencing
in national spectrum management
(for example subject areas in national spectrum management).

Country BELIZE

Focal point CLIFFORD M. SLOSER

The following general questions on national spectrum management are based in part on the functional requirements of spectrum management described in the handbook on "National Spectrum Management." If you need additional space to answer the questions please continue on a separate sheet of paper.

1. Do you have a national law governing spectrum management? YES NO
- Last date this law was changed or modified? 1987
- Are any actions planned to change this law? YES NO

Have any problems been identified? and if so, do you need any assistance from the ITU in solving them?

NEW AND REVISED REGULATION REQUIRED TO MEET
THE REFORM OF TELECOM SECTOR OR USEAGE - YES

2. Have you published regulations and procedures for national spectrum management (e.g. radio services, license requirements etc.)? YES NO

Have any problems been identified? and if so, do you need any assistance from the ITU in solving them?

TECHNICAL ADMINISTRATION OF THE SPECTRUM NEED
TO BE ENHANCED TO MEET COMPETITION - YES

3. Do you have a national radio frequency spectrum allocation table? YES NO

Have any problems been identified? and if so, do you need any assistance from the ITU in solving them?

COST FOR USEAGE AS A NATIONAL RESOURCE
REGULATION FOR BEST OPITION - eg USER COST - AUCTION etc

4. Do you have technical specifications for national spectrum use? YES__ NO

Have any problems been identified? and if so, do you need any assistance from the ITU in solving them?

YES - EQUIPMENT USEAGE AND TECHNICAL SPECIFICATION
FOR COMPATIBILITY WITH SPECTRUM ALLOCATION - YES

5. Do you have a need for any spectrum redeployment* ? YES NO__

* The term "redemption" is used here to refer to a process of national scope in which an assessment is conducted 1) to determine if portions of spectrum can be identified that are in limited use; and 2) to determine if such spectrum segments can be reallocated for use in delivering radiocommunication services that have expanding spectrum requirements.

- If so, do you have a strategy for achieving this redeployment in respective frequency bands and for given radiocommunication services? YES__ NO

- Please define the established strategy and describe the nature of the consultation, if any, with users regarding the potential costs resulting from the planned redeployment.

6. What is the total cost of national spectrum management functions performed by your Government (expressed in Swiss francs)? 150,000 Sw Fr.

- What is the source of the funding required to accomplish these spectrum management functions?

GOVERNMENT SUBSIDY BY RECURRENT & CAPITAL ESTIMATES
FEES FROM RADIO LICENSES ARE PAID INTO CONSOLIDATED REVENUE

7. Do you have a method for establishing spectrum users' fees? YES NO__

- If so, please give a brief description of the method used in establishing those fees.

TELEPHONE OPERATOR (MONOPOLY) PAYS 0.5% - OF PROFIT AFTER
TAX - OTHER USERS OF SPETRUM PAY BY NO OF BASE/MOBILE

8. Do you maintain centralized databases for spectrum management? YES NO__

- What is the approximate size of your database (expressed in number of records)?

4047
(4047)

- Do you have a computerized data base management system (DBMS)?

YES NO

- What DBMS system do you use?

INFORMIX

- Are these frequency assignment records available to public?

YES NO

Have any problems been identified? and if so, do you need any assistance from the ITU in solving them?

REQUIRE A MORE USER FRIENDLY DATABASE MANAGEMENT PROGRAM — YES UPDATED VERSION OF WIN-BASIM

9. Do you notify frequency assignments to the ITU?

YES NO

Have any problems been identified? and if so, do you need any assistance from the ITU in solving them?

INTERNATIONALLY USED FREQ FOR FIXED SATELLITE SERVICE
MEDIUM FREQUENCY / HF. LOCAL VHF/UHF NOT NOTIFIED
YES DETAILED AND COMPLETE PROCEDURE OF REQUIREMENTS

10. Do you have a policy and planning function for national spectrum management (i.e. a national strategy for future use of the spectrum)?

YES NO

Have any problems been identified? and if so, do you need any assistance from the ITU in solving them?

11. Do you perform technical analyses of frequency assignment requests? YES NO

Have any problems been identified? and if so, do you need any assistance from the ITU in solving them?

LIMITED ONLY TO HARMONICS AND INTERMODULATION
ANALYSIS — ITU SOFTWARE FOR ADVANCE ANALYSIS

12. Do you perform radio monitoring? YES NO

- number of fixed monitoring stations

ONE

- facilities available at fixed monitoring stations

-- monitoring up to 1000 MHz

-- direction finding up to 1000 MHz

- number of mobile monitoring stations ONE

- facilities available at mobile monitoring stations

-- monitoring up to 1000 MHz

-- direction finding up to 1000MHz

Have any problems been identified? and if so, do you need any assistance from the ITU in solving them?

THE REQUIREMENTS FOR A MONITORING STATION AND PROCEDURES WITHIN FINANCIAL LIMITATION

13. Do you perform technical analyses of radio frequency interference complaints? YES__ NOX

- Do you have an established consultation process, involving Government and non-government organization, for resolving these complaints? YES__ NOX

Have any problems been identified? and if so, do you need any assistance from the ITU in solving them?

REGULATIONS AND GUIDELINES REQUIRED TO SET UP THE PROCESS - YES THROUGH A CONSULTANT

14. What computers and operating systems are in use for national spectrum management?

Type of computers DESK TOP- PENTIUM

Operating system(s) WINDOWS

Have any problems been identified? and if so, do you need any assistance from the ITU in solving them?

15. Number of technical/professional staff in national spectrum management? THREE

16. Number of support staff in national spectrum management? TWO

17. Describe your country's spectrum management structure (Please enclose a copy of organization chart).

18. Do you use the ITU-R Handbooks and Reports on:

- a) National Spectrum Management, version 1995 ? — *YES*
- b) Spectrum Monitoring¹, version 1995? — *NO*
- c) Computer-aided Techniques for Spectrum Management, version 1999? — *NO*
- d) HF Broadcasting System Design, version 1999? — *NO*
- e) Report SM.2012, Economic Aspects of Spectrum Management, version 1997²? — *NO*
- f) Windows Basic Automated Spectrum Management System (WinBASMS) Software Version 1997, Manual Version 1997 — *NO*

What additional information/handbooks do you need from the ITU?

WINDOWS - SOFTWARE - FOR INTERMOD/HARMONICS
ANALYSIS - PATH PROFILE ANALYSIS

To be returned no later than 31 January 2000 to:

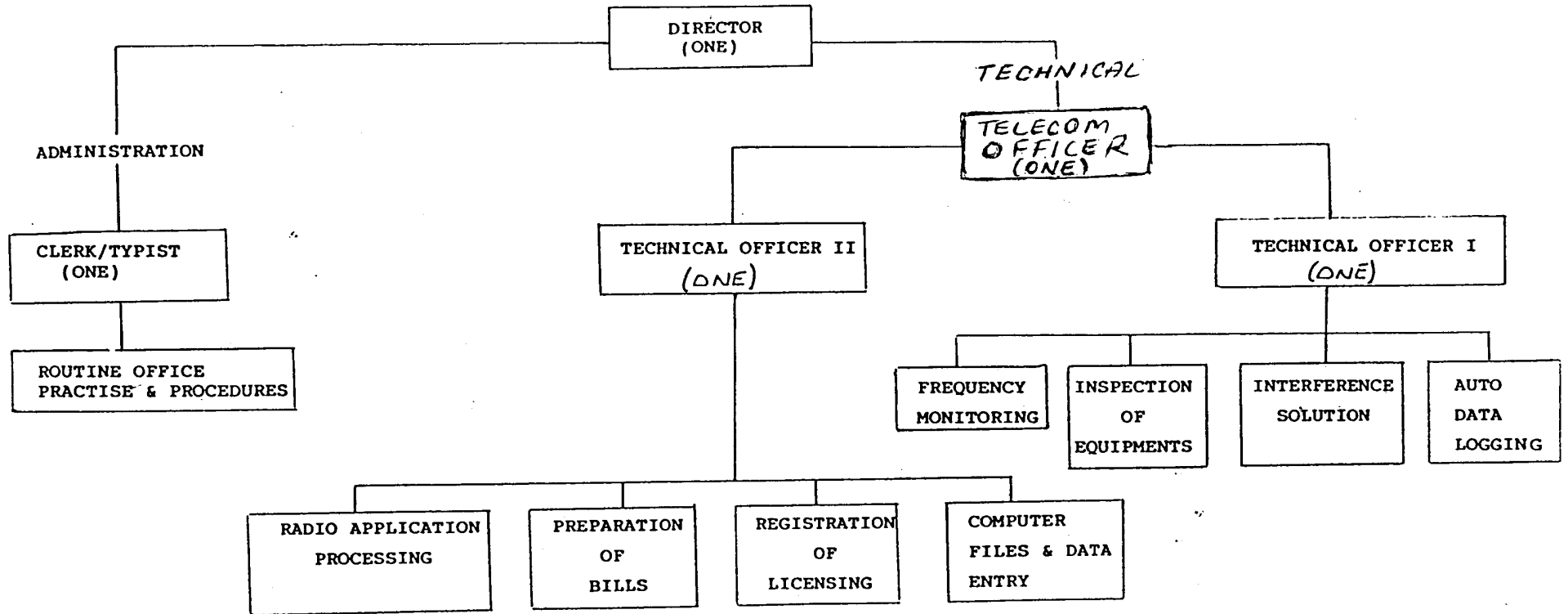
*ITU-D Study Groups Secretariat
Telecommunication Development Bureau
Fax: +41 22 730 54 84
E-Mail: devsg1@itu.int*

THANK YOU FOR YOUR COOPERATION

¹ The Spectrum Monitoring Handbook is currently being updated, therefore, you are urged to contact Mr Jan Verduijn (NL), the designated Rapporteur from ITU-R Study Group 1, Working Party 1C if you have any comments that you wish included in a future version of this Handbook.

² This Report SM.2012 was updated during the ITU-R Study Group 1 meeting in August 1999. This new version is expected to be available in the three working languages by January 2000.

OFFICE OF TELECOMMUNICATIONS



No. 991

*Office of Telecommunications,
Belize City, 8th November, 1999.*

**BELIZE
NATIONAL FREQUENCY SPECTRUM
BAND ALLOCATION PLAN**

The Allocations confirm with the International Telecommunication Union's Radio Regulations, Recommendations of the Inter-american Commission for Telecommunication - CITEL and the National Frequency Plan of Belize.

Frequency assignments are mandatory prior to purchase and use of equipment and are done by the Office of Telecommunications.

Interests or queries of Bands listed or not listed should be made at the Office of Telecommunications.

<i>Frequency Bands - MHZ</i>	<i>Service and Remarks</i>
0 — 0.535	In accordance with I.T.U. Radio Regulations Non Directional Radio Beacon on 0.392 MHZ
0.535 — 1.605	Broadcasting - Medium Frequency
1.605 — 1.625	Broadcasting (RdJ88)
1.625 — 1.800	Fixed, Mobile and Aeronautical Radio Navigation on a Primary basis
1.800 — 1.900	Amateur
1.900 — 2.000	Radio Location and Radio Navigation
2.000 — 2.170	Fixed and Mobile - Reserved
2.107 — 2.170	Fixed and Mobile
2.170 — 2.190	Maritime Mobile - Distress and Calling on 2.182 MHZ
2.190 — 2.194	Maritime Mobile
2.194 — 2.495	Fixed and Mobile - Reserved
2.495 — 2.505	Standard Frequency and Time Signal operating on 2.500 MHZ
2.505 — 3.025	Fixed and Mobile
3.025 — 3.155	Aeronautical Mobile
3.155 — 3.400	Fixed and Mobile - Reserved
3.400 — 3.500	Aeronautical Mobile
3.500 — 3.750	Amateur - 3.5 MHZ to be used in the event of Natural Disaster
3.750 — 4.000	Amateur - Shared with Fixed and Land Mobile
4.000 — 4.438	Maritime Mobile - 4.1775 MHZ Distress Frequency
4.438 — 4.650	Fixed and Land Mobile Reserved

Belize

<i>Frequency Bands - MHZ</i>	<i>Service and Remarks</i>
4.650 — 4.750	Aeronautical Mobile
4.750 — 4.995	Fixed and Mobile Reserved
4.995 — 5.005	Standard frequency and Time Signal on 5.000 MHZ
5.005 — 5.450	Fixed and Land Mobile
5.450 — 5.730	Aeronautical Mobile
5.730 — 5.950	Fixed and Mobile - Reserved
5.950 — 6.200	Broadcasting
6.200 — 6.525	Maritime Mobile 6.268 MHZ and 6.312 MHZ are Distress Frequencies
6.525 — 6.765	Aeronautical Mobile
6.765 — 7.000	Fixed and Mobile - Reserved
7.000 — 7.100	Amateur and Amateur Satellite 7.0 MHZ to be used in the event of Natural Disaster
7.100 — 7.300	Amateur
7.300 — 8.100	Fixed and Land Mobile
8.100 — 8.195	Fixed and Mobile - Reserved
8.195 — 8.815	Maritime Mobile
8.815 — 9.000	Fixed and Land Mobile
9.000 — 9.500	Fixed and Mobile - Reserved
9.500 — 9.900	Broadcasting
9.900 — 9.995	Fixed and Mobile - Reserved
9.995 — 10.003	Standard Frequency and Time Signal on 10.000 MHZ
10.003 — 10.100	Fixed and Mobile - Reserved
10.100 — 10.150	Amateur. 10.1 MHZ to be used in the event of Natural Disaster
10.150 — 11.175	Fixed and Mobile - Reserved
11.175 — 11.400	Aeronautical Mobile
11.400 — 11.650	Fixed and Mobile - Reserved
11.650 — 12.050	Broadcasting
12.050 — 12.200	

Belize

<i>Frequency Bands - MHZ</i>	<i>Service and Remarks</i>
23.200 — 23.350	Aeronautical Service
23.350 — 24.890	Fixed and Land Mobile
24.890 — 24.990	Amateur and Amateur Satellite. 24.890 MHZ to be used in the event of Natural Disaster
24.990 — 25.010	Standard Time and Frequency on 25.000 MHZ
25.010 — 25.070	Fixed and Land Mobile
25.070 — 25.210	Maritime Mobile
25.210 — 25.670	Fixed and Land Mobile
25.670 — 26.100	Broadcasting
26.100 — 26.175	Maritime Mobile
26.175 — 26.960	Radio paging, alarm, remote control telemetry and wireless microphone
26.960 — 27.410	Citizen band shared on a secondary basis with Industrial, Scientific and Medical Apparatus. 10 MHZ separation from 26.965 to 27.405 MHZ
27.410 — 28.000	Fixed and Mobile. Channel spacing 10 KHZ. Lowest channel - 27.415 MHZ. Highest channel - 27.995 MHZ
28.000 — 29.700	Amateur and Amateur Satellite
29.700 — 30.005	Fixed and Mobile
30.010 — 30.295	Remote control and telemetry. Remote control 10 KHZ channel spacing 30.020 - 30.270. Telemetry 30.200 - 30.290
30.295 — 35.025	Fixed and Mobile - Reserved
35.025 — 40.660	Fixed and Mobile - Reserved. Telemetering on a secondary basis
40.660 — 40.700	Industrial Scientific and Medical (ISM) applications (Center frequency 40.680) and remote control channels 40.665, 40.675, 40.685, 40.695.
40.700 — 43.000	Fixed Mobile - Reserved.
43.000 — 50.000	Fixed and Land Mobile. Cordless telephones on a secondary basis.
50.000 — 54.000	Amateur.
54.000 — 72.000	Broadcasting. T.V. channels 2-4.
72.000 — 73.000	Fixed and Land Mobile.
73.000 — 74.600	Radio Astronomy. No interference shall be caused to this service.
74.600 — 75.400	Guardband for aeronautical marker beacon. The

Belize

<i>Frequency Bands - MHZ</i>	<i>Service and Remarks</i>
13.200 — 13.260	Aeronautical Mobile
13.260 — 13.600	Fixed and Mobile - Reserved
13.600 — 13.800	Broadcasting
13.800 — 14.000	Fixed and Land Mobile
14.000 — 14.350	Amateur and Amateur Satellite. The Frequency 14.000 MHZ shall be used in the event of Natural Disasters
14.350 — 14.800	Fixed and Mobile - Reserved
14.800 — 14.990	Fixed and Land Mobile
14.990 — 15.0110	Standard Frequency and Time Signal on 15.000 MHZ
15.010 — 15.100	Fixed and Land Mobile
15.100 — 15.600	Broadcasting
15.600 — 16.360	Fixed and Mobile - Reserved
16.360 — 17.410	Maritime Mobile
17.410 — 17.550	Fixed and Mobile - Reserved
17.550 — 17.900	Broadcasting
17.900 — 18.030	Aeronautical Mobile
18.030 — 18.068	Fixed and Land Mobile
18.068 — 18.168	Amateur and Amateur Satellite
18.168 — 18.780	Fixed and Mobile - Reserved
18.780 — 18.900	Maritime Mobile
18.900 — 19.680	Fixed and Mobile - Reserved
19.680 — 19.800	Maritime Mobile
19.800 — 19.990	Fixed and Mobile - Reserved
19.990 — 20.010	Standard Time and Frequency on 20.000 MHZ
20.010 — 21.000	Fixed and Land Mobile
21.000 — 21.450	Amateur and Amateur Satellite. The Frequency 21.000 MHZ shall be used in the event of Natural Disaster.
21.450 — 21.850	Broadcasting
21.850 — 21.870	Fixed and Land Mobile
21.870 — 22.000	Aeronautical Service
22.000 — 22.855	Maritime Mobile
22.855 — 23.200	Fixed and Land Mobile

Belize

0 — 24.890	Fixed and Land Mobile
00 — 24.990	Amateur and Amateur Satellite. 24.890 MHZ to be used in the event of Natural Disaster
90 — 25.010	Standard Time and Frequency on 25.000 MHZ
010 — 25.070	Fixed and Land Mobile
070 — 25.210	Maritime Mobile
210 — 25.670	Fixed and Land Mobile
670 — 26.100	Broadcasting
0100 — 26.175	Maritime Mobile
5175 — 26.960	Radio paging, alarm, remote control telemetry and wireless microphone
6960 — 27.410	Citizen band shared on a secondary basis with Industrial, Scientific and Medical Apparatus. 10 MHZ separation from 26.965 to 27.405 MHZ
27.410 — 28.000	Fixed and Mobile. Channel spacing 10 KHZ. Lowest channel - 27.415 MHZ. Highest channel - 27.995 MHZ
28.000 — 29.700	Amateur and Amateur Satellite
29.700 — 30.005	Fixed and Mobile
30.010 — 30.295	Remote control and telemetry. Remote control 10 KHZ channel spacing 30.020 - 30.270. Telemetry 30.200 - 30.290
30.295 — 35.025	Fixed and Mobile - Reserved
35.025 — 40.660	Fixed and Mobile - Reserved. Telemetry on a secondary basis
40.660 — 40.700	Industrial Scientific and Medical (ISM) applications (Center frequency 40.680) and remote control channels 40.665, 40.675, 40.685, 40.695.
40.700 — 43.000	Fixed Mobile - Reserved.
43.000 — 50.000	Fixed and Land Mobile. Cordless telephones on a secondary basis.
50.000 — 54.000	Amateur.
54.000 — 72.000	Broadcasting. T.V. channels 2-4.
72.000 — 73.000	Fixed and Land Mobile.
73.000 — 74.600	Radio Astronomy. No interference shall be caused to this service.
74.600 — 75.400	Guardband for aeronautical marker beacon. The frequency 75 MHZ is assigned to this service. No assignments shall be made in this band.

Belize

<i>Frequency Bands - MHZ</i>		<i>Service and Remarks</i>
75.400	— 76.000	Fixed and Land Mobile
76.000	— 88.000	Broadcasting - TV Channels 5 and 6
88.000	— 108.000	Broadcasting - FM service
108.000	— 117.975	Aeronautical Radio Navigation
117.975	— 137.000	Aeronautical Mobile. Emergency Frequency 121.500 MHz and Auxiliary Emergency Frequency 123.100 MHz
137.000	— 138.000	Meteorological Satellites. Space Operation and Research
138.000	— 144.000	Fixed and Land Mobile
144.000	— 146.000	Amateur and Amateur Satellite. 144.000 MHz to be used in the event of Natural Disaster
146.000	— 149.900	Fixed and Land Mobile
149.900	— 150.050	Radio Navigation and Satellite. On a Primary Basis
150.050	— 150.475	Fixed and Land Mobile
150.475	— 150.725	Fixed and Land Mobile - Reserved
150.725	— 150.775	Government - Reserved for Emergency Frequency on 150.750 MHz for Disaster Management
150.800	— 151.925	Fixed and Land Mobile - Reserved
151.925	— 156.000	Fixed and Land Mobile
156.000	— 156.350	Maritime Mobile Channels 1-7 Maritime Mobile Channels 60-66 Duplex to 160.600 - 160-950 Ship transmitter
156.350	— 156.750	Maritime Fixed and Mobile between Coast Stations. Simplex Channels 8-15 and 67-74 Intership, Port Operations and Ship Movements
156.750	— 156.850	Maritime Mobile Channel 16 (156.800 MHz) Guardband. Emergency and Calling channel
156.850	— 156.875	Maritime Mobile Simplex channels 17 and 77 for Intership and Port Operations
156.875	— 157.425	Maritime Mobile. Duplex to 161.500 - 162.025. Ship transmitter. Channels 18-28 and 78-88 public correspondence and two Frequency Port Operation and Ship Movements
157.425	— 157.950	Simplex for Mobile and Fixed. Priority is given to combined Land Mobile, Maritime Mobile and Fixed Services between Coast Stations. Channel Division 25 KHz from 157.450 - 157.950
157.950	— 160.300	Fixed Service - Reserved

Belize

0	—	160.950	Maritime Mobile Duplex to 156.000 - 156.350 Coast Transmitters.
50	—	161.500	Fixed Service - Reserved
00	—	162.025	Maritime Mobile Duplex to 156.875 - 157.425 Coast Station Transmitters.
025	—	162.900	Fixed and Land Mobile - Reserved
900	—	163.750	Fixed Service - Reserved
.750	—	167.025	Fixed and Mobile - Reserved
025	—	167.575	Fixed Service - Reserved
7.575	—	168.150	Fixed and Land Mobile - Reserved.
8.150	—	169.000	Fixed Service - Reserved
9.000	—	169.800	Fixed and Land Mobile - Reserved
59.800	—	172.150	Fixed Service - Reserved
72.150	—	174.000	Fixed and Land Mobile - Reserved.
74.000	—	216.000	Television Broadcasting V.H.F. Channels 7 to 13.
216.000	—	220.000	Fixed and Land Mobile.
220.000	—	225.000	Fixed, Mobile and Amateur
225.000	—	235.000	Fixed and Mobile. Studio Transmitter Link. Channel division 200 KHz.
235.000	—	242.950	Fixed and Land Mobile - Reserved
242.950	—	243.050	Guardband for emergency position indicating radiobeacons. 243.000 MHz is distress calling frequency.
243.050	—	328.600	Fixed and Mobile
328.600	—	335.400	Aeronautical Radionavigation I.L.S. Guide Path Transmitters.
339.900	—	400.050	Radionavigation - Satellite
400.050	—	400.150	Standard Frequency and Time Signal Satellite (400.100MHZ)
400.150	—	406.000	Meteorological Aids.
406.000	—	414.600	Fixed Service - Reserved
414.600	—	416.500	Fixed and Mobile
416.500	—	422.000	Fixed Service - Reserved

Belize

<i>Frequency Bands - MHZ</i>	<i>Service and Remarks</i>
422.000 — 424.000	Fixed, Mobile and Radio Location
424.000 — 428.000	Fixed Service - Reserved
428.000 — 429.500	Fixed and Mobile.
429.500 — 437.500	Fixed Service - Reserved
437.500 — 440.000	Radio location and Amateur Services. Amateur Service shares the band on a secondary basis
440.000 — 448.500	Fixed Service - Reserved
448.500 — 450.000	Land Mobile Service. Mobile Transmitters.
450.000 — 452.000	Land Mobile Service. Duplex to 460.000 - 462.000 MHZ.
452.000 — 456.000	Fixed Service - Reserved
456.000 — 460.000	Fixed Service. Duplex to 466.000 - 470.000 MHZ.
460.000 — 462.000	Land Mobile Service. Base Transmitters, duplex to 450.000 - 452.000 MHZ.
462.000 — 462.250	Fixed and Land Mobile
462.250 — 463.000	Reserved
463.000 — 463.500	Fixed and Land Mobile
463.500 — 466.000	Fixed Service - Reserved
466.000 — 470.000	Fixed Service. Duplex to 456.000 - 460.000 MHZ.
470.000 — 512.000	Broadcasting - U.H.F. T.V. Channels 14 - 20.
512.000 — 608.000	Broadcasting - U.H.F. Channels 21 - 36.
608.000 — 614.000	Radio Astronomy - Protection shall be afforded to this radio service.
614.000 — 806.000	Broadcasting - UHF Channels 38 - 69.
806.000 — 821.000	Trunked Mobile Radio.
821.000 — 825.000	Fixed and Mobile - Reserved.
825.000 — 845.000	Cellular Radio Systems.
845.000 — 851.000	Fixed and Mobile
851.000 — 866.000	Trunk Mobile Radio.
866.000 — 870.000	Fixed and Mobile
870.000 — 890.000	Cellular Radio System.
890.000 — 902.000	Fixed and Mobile Aeronautical Radio and Microwave Security Services.
902.000 — 908.000	Fixed Aeronautical - Reserved

Belize

<i>Frequency Bands - MHz</i>	<i>Service and Remarks</i>
908.000 — 920.000	Reserved.
920.000 — 925.000	Fixed Service - Reserved
925.000 — 930.000	Reserved.
930.000 — 935.000	Fixed Service - Reserved
935.000 — 940.000	Reserved.
940.000 — 945.000	Fixed Service - Reserved
945.000 — 960.000	Aeronautical Radio Navigation.
960.000 — 965.000	Fixed Service - Reserved
965.000 — 1215.000	Aeronautical Radio Navigation.
1215.000 — 1300.000	Radio location. - Radio Navigation - Satellite.
1300.000 — 1350.000	Aeronautical Radio Navigation.
1350.000 — 1400.000	Radio location.
1400.000 — 1427.000	Radio Astronomy - Earth Exploration - Satellite.
1427.000 — 1438.000	Fixed and Mobile
1438.000 — 1445.000	Aeronautical Radio Navigation.
1445.000 — 1500.000	Fixed and Mobile
1500.000 — 1515.000	Aeronautical Radio Navigation
1515.000 — 1525.000	Fixed and Mobile
1525.000 — 1545.000	Mobile Satellite s - e
1545.000 — 1555.000	Aeronautical Mobile Satellite s - e
1555.000 — 1559.000	Land Mobile Satellite s - e
1559.000 — 1610.000	Aeronautical Radionavigation Radionavigation Satellite s - e
1610.000 — 1626.500	Mobile Satellite e - s
1626.500 — 1670.000	Land Maritime and Aeronautical Mobile Satellite e - s
1670.000 — 1710.000	Meteorological Aids e - s Meteorological Satellites s - e
1710.000 — 1850.000	Government - Fixed Services. Reserved
1850.000 — 1910.000	Fixed Services - Low Mobility Low Mobility Access PCS

Belize

<i>Frequency Bands - MHZ</i>	<i>Service and Remarks</i>
1930.000 — 1980.000	Fixed Service - Low Mobility Access
1980.000 — 2010.000	Fixed and Mobile Satellite e - s
2010.000 — 2100.000	Fixed Services - Reserved
2100.000 — 2170.000	Reserved
2170.000 — 2200.000	Fixed and Mobile Satellite s - e
2200.000 — 2483.500	Reserved
2483.500 — 2500.000	Fixed and Mobile Satellite s - e
2500.000 — 2690.000	Reserved
2690.000 — 3100.000	Reserved in accordance with ITU Radio Regulations/ CITEL Americas Regional Plan.
3100.000 — 3300.000	Radio Location
3300.000 — 3400.000	Radio Location, Amateur, fixed and Mobile
3400.000 — 3500.000	Fixed Service - Reserved Fixed Satellite s - e
3500.000 — 3700.000	Fixed Service Fixed Satellite s - e
3700.000 — 4200.000	Fixed Service Fixed Satellite s - e
4200.000 — 4400.000	Aeronautical Radionavigation
4400.000 — 4500.000	Fixed and Mobile
4500.000 — 4800.000	Fixed and Mobile Fixed Satellite s - e
4800.000 — 5850.000	Reserved. In accordance with ITU Radio Regulations/CITEL Americas Regional Plan.
5850.000 — 7075.000	Fixed Service Fixed Satellite s - e
7075.000 — 7250.000	Fixed and Mobile
7250.000 — 7750.000	In accordance with ITU Radio Regulations/CITEL Americas Regional Plan.
7750.000 — 7900.000	Fixed and Mobile
7900.000 — 8025.000	Fixed Service Fixed Satellite e - s
8025.000 —	In accordance with ITU Radio Regulation/CITEL Americas Regional Plan.

(CLIFFORD M. SLUSHER)
Director of Telecommunication

