

Lithuania

Attachment 1**QUESTIONNAIRE - PART I****(To be completed by both Administrations and Sector members, if relevant)****Specific Questions on National Radio Frequency Spectrum Management****1. Information on national radio frequency spectrum allocations: 29.7 - 960 MHz**

- a) If you have published a National Table of Radio Frequency Spectrum Allocations, please submit a copy (either in electronic, or printed form, or both) of that table along with your responses to the attached questionnaire. *YES see attached paper copy*
- b) If you do not have a national frequency allocations table available, the attached modified extract from Article S.5 of the Radio Regulations may be used to indicate general *full electronic copy available at* information on how this range of frequencies is used by your administration within your *www.radio.it/* national borders. *table.itu*

In using the attached modified extract of the International Frequency Allocations table presented in the excerpt from the Radio Regulations Article S.5, you, as a respondent from an administration or industry, are invited to enter the following information. In the column designated "National Allocations", respondents from administrations are requested to enter the name of the radiocommunications service (using the ITU terminology given in Article S1 of the Radio Regulations, such as FIXED, MOBILE, space research, radio astronomy...) that is allocated use of a given frequency band. In the column designated "Remarks", 1) respondents from administrations are invited to enter further technical specifications, if any, that have been established nationally for a given band such as channel spacing, limitations on radiated signal power...; and 2) respondents from industry are invited to enter the operating parameters such as channel spacing, radiated signal power capabilities,..., of products available for operation in a given frequency band.

2 Identification of a focal point regarding correspondence on this questionnaire (Parts I and II)

Please identify a focal point in your administration/organization who could provide a response to further correspondence regarding this questionnaire (see hereafter).

**FOCAL POINT REGARDING CORRESPONDENCE ON THIS QUESTIONNAIRE
(PARTS I AND II)**

1. Mr./Ms MEDEIŠIS ARTŪRAS
Family Name First Name
2. Country LITHUANIA
3. Name of the Administration/Organization LITHUANIAN STATE RADIOFREQUENCY SERVICE
4. Title HEAD OF SECTION
5. Address SRFS, ALGARDO STR. 27, LT-2006 VILNIUS
LITHUANIA
6. Tel.: +370 2 33 0125 Fax: +370 2 261564 E-Mail: medeisis@radio.lt

To be returned no later than 31 January 2000 to:
ITU-D Study Groups Secretariat
Telecommunication Development Bureau
Fax: +41 22 730 54 84
E-Mail: devsg2@itu.int

Attachment 2

QUESTIONNAIRE - PART II
(To be completed by Administrations only)

General Questions on National Spectrum Management

**Describe succinctly the problems that your administration is currently experiencing
in national spectrum management
(for example subject areas in national spectrum management).**

Country LITHUANIA

Focal point Mr. A. Mederis / for address see part I

The following general questions on national spectrum management are based in part on the functional requirements of spectrum management described in the handbook on "National Spectrum Management." If you need additional space to answer the questions please continue on a separate sheet of paper.

1. Do you have a national law governing spectrum management? YES NO
 - Last date this law was changed or modified? 1998
 - Are any actions planned to change this law? YES NO

Have any problems been identified? and if so, do you need any assistance from the ITU in solving them?

NO, THANK YOU

2. Have you published regulations and procedures for national spectrum management (e.g. radio services, license requirements etc.)? YES NO

Have any problems been identified? and if so, do you need any assistance from the ITU in solving them?

NO, THANK YOU

3. Do you have a national radio frequency spectrum allocation table? YES NO

Have any problems been identified? and if so, do you need any assistance from the ITU in solving them?

NO, THANK YOU

4. Do you have technical specifications for national spectrum use? YES NO

Have any problems been identified? and if so, do you need any assistance from the ITU in solving them?

5. Do you have a need for any spectrum redeployment* ? YES NO

* The term "redemption" is used here to refer to a process of national scope in which an assessment is conducted 1) to determine if portions of spectrum can be identified that are in limited use; and 2) to determine if such spectrum segments can be reallocated for use in delivering radiocommunication services that have expanding spectrum requirements.

- If so, do you have a strategy for achieving this redeployment in respective frequency bands and for given radiocommunication services? YES NO

- Please define the established strategy and describe the nature of the consultation, if any, with users regarding the potential costs resulting from the planned redeployment.

Redeployment is made prerequisite of any technological upgrade of equipment. Such process takes longer, but does not cost for prospective entrant

6. What is the total cost of national spectrum management functions performed by your Government (expressed in Swiss francs)? ~ 2 mln CHF

- What is the source of the funding required to accomplish these spectrum management functions?

Recovered from licence fees and fees for use of spectrum

7. Do you have a method for establishing spectrum users' fees? YES NO

- If so, please give a brief description of the method used in establishing those fees.

Review of the tariffs is being carried out now, to all relevant methodology is being prepared now

8. Do you maintain centralized databases for spectrum management? YES NO

- What is the approximate size of your database (expressed in number of records)?

~ 50 k

- Do you have a computerized data base management system (DBMS)?

YES NO

- What DBMS system do you use?

FoxPro, being updated to DB2/40

- Are these frequency assignment records available to public?

YES NO

Have any problems been identified? and if so, do you need any assistance from the ITU in solving them?

Generally no

9. Do you notify frequency assignments to the ITU?

YES NO

Have any problems been identified? and if so, do you need any assistance from the ITU in solving them?

May be assistance in developing automated system for electronic notification would be appreciated, very useful.

10. Do you have a policy and planning function for national spectrum management (i.e. a national strategy for future use of the spectrum)?

YES NO

Have any problems been identified? and if so, do you need any assistance from the ITU in solving them?

Usually our policy worked out within the frame of common European policy, e.g. DSI process, ERC Report 25 etc.

11. Do you perform technical analyses of frequency assignment requests?

YES NO

Have any problems been identified? and if so, do you need any assistance from the ITU in solving them?

ITU-R Recs provide necessary background

12. Do you perform radio monitoring?

YES NO

- number of fixed monitoring stations

5

- facilities available at fixed monitoring stations

-- monitoring up to 2000 MHz all, some stations up to 18 GHz
-- direction finding up to 2000 MHz

- number of mobile monitoring stations

2

- facilities available at mobile monitoring stations

-- monitoring up to 2000 MHz

-- direction finding up to 174 MHz, up to 2000 MHz by combining measurements/stations

Have any problems been identified? and if so, do you need any assistance from the ITU in solving them?

Update of NU Monitoring handbook is awaited very much.

13. Do you perform technical analyses of radio frequency interference complaints?

YES NO

- Do you have an established consultation process, involving Government and non-government organization, for resolving these complaints?

YES NO

Have any problems been identified? and if so, do you need any assistance from the ITU solving them?

No, THANK YOU

14. What computers and operating systems are in use for national spectrum management?

Type of computers

IBM PC compatible / Pentium / 486 proc.

Operating system(s)

Windows NT / Windows 95/98

Have any problems been identified? and if so, do you need any assistance from the ITU in solving them?

No, THANK YOU

15. Number of technical/professional staff in national spectrum management? 50

16. Number of support staff in national spectrum management? 50

17. Describe your country's spectrum management structure (Please enclose a copy of organization chart).

See enclosed 2 pages "Our organization"

18. Do you use the ITU-R Handbooks and Reports on:

- a) National Spectrum Management, version 1995 ? *YES*
- b) Spectrum Monitoring¹, version 1995? *YES*
- c) Computer-aided Techniques for Spectrum Management, version 1999? *YES*
- d) HF Broadcasting System Design, version 1999? *NO*
- e) Report SM.2012, Economic Aspects of Spectrum Management, version 1997?² *FAMILIAR, BUT NOT USE*
- f) Windows Basic Automated Spectrum Management System (WinBASMS) Software Version 1997, Manual Version 1997 *FAMILIAR, BUT DO NOT USE, BECAUSE OF AVAILABILITY OF PREVIOUSLY DEVELOPED IN-HOUSE DBMS*

What additional information/handbooks do you need from the ITU?

WANTING REVISED VERSION OF MONITORING HANDBOOK

To be returned no later than 31 January 2000 to:

ITU-D Study Groups Secretariat

Telecommunication Development Bureau

Fax: +41 22 730 54 84

E-Mail: devsg1@itu.int

THANK YOU FOR YOUR COOPERATION

¹ The Spectrum Monitoring Handbook is currently being updated, therefore, you are urged to contact Mr Jan Verduijn (NL), the designated Rapporteur from ITU-R Study Group 1, Working Party 1C if you have any comments that you wish included in a future version of this Handbook.

² This Report SM.2012 was updated during the ITU-R Study Group 1 meeting in August 1999. This new version is expected to be available in the three working languages by January 2000.

Lithuania

The Ministry of Communications and Informatics of the Republic of Lithuania

THE NATIONAL TABLE OF RADIO FREQUENCY ALLOCATIONS

includes only parts

29,7 - 960 MHz

*For the full electronic
version visit*

[www.radio.lt / table.litua](http://www.radio.lt/table.litua)

Vilnius
1997

Lithuania

CONTENTS

Introduction.....	3 p.
How to use the Table of Frequency Allocations.....	4 p.
The Table of Radio Frequency Allocations	5 p.
Annex 1. RR Article S5 Footnotes Relevant to the National Table of Radio Frequency Allocations (according to <i>Final Acts of the World Radiocommunication Conference (WRC - 95), Geneva, 1995 and Final Acts of the World Radiocommunication Conference (WRC - 97), Geneva, 1997</i>).....	83 p.
Annex 2. Footnotes to the National Table of Radio Frequency Allocations.....	107 p.
Annex 3. Footnotes to European Common Allocation Table (quoted from the material of <i>Detailed Spectrum Investigation DSI-2</i>).....	112 p.
Annex 4. The list of CEPT ERC Decisions, Recommendations, (I)-ETS Standards, Lithuanian Technical Regulations (TT), applied in assigning radio frequencies to radio services (stations)	113 p.
Annex 5. Explanation of terms (abbreviations) used in the National Table of Radio Frequency Allocations.....	119

Lithuania

Introduction

The National Table of Radio Frequency Allocations constitutes the document, presenting the key principles and directions of radio frequency allocation in the Republic of Lithuania. The table was drawn up on the basis of Radio Regulations of the International Telecommunication Union and other documents approved by this organisation. During the preparation of the Table account was taken of frequency allocations in Region 1, to which Lithuania belongs and to the historic circumstances of radio spectrum distribution in Lithuania. European Common Allocation Table was also used, as well as other documents of European Radiocommunications Committee.

This publication sums up the work of the Ministry of Communications and Informatics and organisations, subordinate to it, carried out in the preparation of the Table after the restoration of independence. It presents the radio spectrum allocation from 9 kHz to 3400 MHz. The part of the Table from 960 MHz to 3400 MHz was approved on November 19, 1996, by order No. 132 of the Minister of Communications and Informatics, part from 9 kHz to 30 MHz - on October 5, 1997, by order No. 54, 30-960 MHz part - on October 10, 1997, by order No. 128. At present other parts of the Table are in preparation.

As the requirements of radio spectrum usage are constantly changing, the Table will be continuously up-dated and revised.

Lithuania

How to Use the Table of Frequency Allocations

The Table consists of 4 columns. The first column indicates allocation of a frequency band in Radio Regulations, the second column - allocation of the frequency band in Lithuania. The third column characterises the allocation of bands for government use in Lithuania, i.e., the frequency bands assigned for the Ministry of National Defence, the Ministry of Internal Affairs, the State Security Department. The fourth column comprises additional notes.

The name of a service, printed in capital letters (e.g., LAND MOBILE), indicates that the frequency band is allocated to the service on a primary basis, the name printed in normal characters (e.g., Fixed) shows that the frequency band is allocated to the service on a secondary basis. The entry SX.XX indicates the footnotes of Radio Regulations (SX.XX footnotes directly concern Lithuania, SX.XX - neighbours of Lithuania), LTX.XX - the footnotes of the National Table of Radio Frequency Allocations, EUXX - the footnotes of European Common Allocation Table. These footnotes are listed in the annexes of the Table.

USED ACCORDING TO RADIO REGULATIONS (FREQUENCY BAND, SERVICES, NOTES)	USED IN LITHUANIA (FREQUENCY BAND, BANDWIDTH, SERVICES, NOTES)	USED IN LITHUANIA FOR GOVERNMENT REQUIREMENTS (FREQUENCY BAND, BANDWIDTH, SERVICES, NOTES)	ADDITIONAL NOTES
27.5-28 MHz METEOROLOGICAL AIDS FIXED MOBILE	27.5-28 MHz (500.0 kHz) METEOROLOGICAL AIDS FIXED MOBILE		
28-29.7 MHz AMATEUR S5. 120 AMATEUR-SATELLITE	28-29.7 MHz (1700.0 kHz) AMATEUR S5. 120 AMATEUR-SATELLITE		
29.7-30.005 MHz FIXED MOBILE	29.7-30.005 MHz (305.0 kHz) FIXED MOBILE		
30.005-30.01 MHz SPACE OPERATION (satellite identification) FIXED MOBILE SPACE RESEARCH		30.005-30.010 MHz (0.005 MHz) MOBILE LT2.1	EU107
30.01-37.5 MHz FIXED MOBILE	30.010-31.025 MHz (1.015 MHz) Mobile LT2.1, LT2.2	30.010-31.000 MHz (0.990 MHz) MOBILE LT2.1	
	31.000-31.350 MHz (0.350 MHz) MOBILE LT2.3		

USED ACCORDING TO RADIO REGULATIONS (FREQUENCY BAND, SERVICES, NOTES)	USED IN LITHUANIA (FREQUENCY BAND, BANDWIDTH, SERVICES, NOTES)	USED IN LITHUANIA FOR GOVERNMENT REQUIREMENTS (FREQUENCY BAND, BANDWIDTH, SERVICES, NOTES)	ADDITIONAL NOTES
---	--	--	------------------

30.01-37.5 MHz FIXED MOBILE	31.350-34.990 MHz (3.640 MHz) Mobile LT2.1, LT2.2	31.350-34.990 MHz (3.640 MHz) MOBILE LT2.1	
	34.990-35.225 MHz (0.235 MHz) MOBILE LT2.4		
	35.225-37.500 MHz (2.275 MHz) MOBILE LT2.1		
37.5-38.25 MHz FIXED MOBILE Radio Astronomy S5.149	37.500-38.250 MHz (0.750 MHz) MOBILE except aeronautical mobile Radio Astronomy S5.149, LT2.5		EU107
38.25-39.986 MHz FIXED MOBILE	38.250-39.986 MHz (1.736 MHz) MOBILE LT2.3		EU107
39.986-40.02 MHz FIXED MOBILE Space Research	39.986-40.020 MHz (0.034 MHz) MOBILE Space Research LT2.3		EU107

USED ACCORDING TO RADIO REGULATIONS (FREQUENCY BAND, SERVICES, NOTES)	USED IN LITHUANIA (FREQUENCY BAND, BANDWIDTH, SERVICES, NOTES)	USED IN LITHUANIA FOR GOVERNMENT REQUIREMENTS (FREQUENCY BAND, BANDWIDTH, SERVICES, NOTES)	ADDITIONAL NOTES
40.02-40.98 MHz FIXED MOBILE <u>S5.150</u>	40.020-40.660 MHz (0.640 MHz) MOBILE S5.150, LT2.3		EU107
	40.660-40.700 MHz (0.040 MHz) MOBILE S5.150, LT2.6, LT2.7		EU107 ERC/REC 70-03
	40.700-40.980 MHz (0.280 MHz) MOBILE LT2.9		EU107
40.98-41.015 MHz FIXED MOBILE Space Research S5.160, 161	40.980-40.990 MHz (0.010 MHz) MOBILE Space Research LT2.9		EU107
		40.990-41.015 MHz (0.025 MHz) MOBILE Space Research	
41.015-44 MHz FIXED MOBILE S5.160, 161		41.015-44.000 MHz (2.985 MHz) MOBILE	

USED ACCORDING TO RADIO REGULATIONS (FREQUENCY BAND, SERVICES, NOTES)	USED IN LITHUANIA (FREQUENCY BAND, BANDWIDTH, SERVICES, NOTES)	USED IN LITHUANIA FOR GOVERNMENT REQUIREMENTS (FREQUENCY BAND, BANDWIDTH, SERVICES, NOTES)	ADDITIONAL NOTES
44-47 MHz FIXED MOBILE S5.162		44.000-46.400 MHz (2.400 MHz) MOBILE	
		46.400-47.000 MHz (0.600 MHz) MOBILE except aeronautical mobile	
47-68 MHz BROADCASTING S5.163, 164, 165, 169, 171	47.000-47.250 MHz (0.250 MHz) LAND MOBILE S5.163		EU104, EU107
	47.250-48.000 MHz (0.750 MHz) LAND MOBILE S5.163		EU104, EU107
	48.000-48.500 MHz (0.500 MHz) LAND MOBILE S5.163		EU104, EU107
	48.500-49.500 MHz (1.000 MHz) BROADCASTING Land Mobile S5.163, LT2.10		EU104, EU107
	49.500-50.000 MHz (0.500 MHz) BROADCASTING Land Mobile S5.163, LT2.10		EU104, EU107

USED ACCORDING TO RADIO REGULATIONS (FREQUENCY BAND, SERVICES, NOTES)	USED IN LITHUANIA (FREQUENCY BAND, BANDWIDTH, SERVICES, NOTES)	USED IN LITHUANIA FOR GOVERNMENT REQUIREMENTS (FREQUENCY BAND, BANDWIDTH, SERVICES, NOTES)	ADDITIONAL NOTES
47-68 MHz BROADCASTING S5.163, 164, 165, 169, 171	50.000-52.000 MHz (2.000 MHz) BROADCASTING Land Mobile Amateur S5.163, LT2.10		EU104, EU107
	52.000-54.000 MHz (2.000 MHz) BROADCASTING Land Mobile S5.163, LT2.10		
	54.000-56.500 MHz (2.500 MHz) BROADCASTING Land Mobile S5.163, LT2.10		EU104, EU107 T/R 25-08 ML, 61.00-68.00 MHz duplex, channel separation: 12.5 kHz, 25 kHz
	56.500-58.000 MHz (1.500 MHz) LAND MOBILE S5.163		
	58.000-61.000 MHz (3.500 MHz) BROADCASTING Land Mobile LT2.10		
	61.000-66.000 MHz (5.000 MHz) BROADCASTING Land Mobile LT2.10		EU104, EU107 T/R 25-08 FB, 54.00-61.00 MHz duplex, channel separation: 12.5 kHz, 25 kHz

USED ACCORDING TO RADIO REGULATIONS (FREQUENCY BAND, SERVICES, NOTES)	USED IN LITHUANIA (FREQUENCY BAND, BANDWIDTH, SERVICES, NOTES)	USED IN LITHUANIA FOR GOVERNMENT REQUIREMENTS (FREQUENCY BAND, BANDWIDTH, SERVICES, NOTES)	ADDITIONAL NOTES
47-68 MHz BROADCASTING S5.163, 164, 165, 169, 171	66.000-68.000 MHz (2.000 MHz) BROADCASTING Land Mobile LT2.11		
68-74.8 MHz FIXED MOBILE except aeronautical mobile S5.149, 174, 175, 177, 179	68.000-70.450 MHz (2.450 MHz) BROADCASTING Mobile S5.175, LT2.11		EU105, EU107 T/R 25-08 ML, 77.80-80.25 MHz duplex, channel separation: 12.5 kHz, 25 kHz
	70.450-73.300 MHz (2.850 MHz) BROADCASTING Mobile except aeronautical mobile Radio Astronomy S5.149, 175, 177, LT2.5, LT2.11		EU105 T/R 25-08 ML, 80.25-83.10 MHz duplex, channel separation: 12.5 kHz, 25 kHz
	73.300-74.000 MHz (0.700 MHz) BROADCASTING Mobile except aeronautical mobile Radio Astronomy S5.149, 177, LT2.5, LT2.11,		EU105 T/R 25-08 ML, 83.10-83.90 MHz duplex; channel separation: 12.5 kHz, 25 kHz
	74.000-74.100 MHz (0.100 MHz) MOBILE except aeronautical mobile Radio Astronomy S5.149, LT2.5		

USED ACCORDING TO RADIO REGULATIONS (FREQUENCY BAND, SERVICES, NOTES)	USED IN LITHUANIA (FREQUENCY BAND, BANDWIDTH, SERVICES, NOTES)	USED IN LITHUANIA FOR GOVERNMENT REQUIREMENTS (FREQUENCY BAND, BANDWIDTH, SERVICES, NOTES)	ADDITIONAL NOTES
68-74.8 MHz FIXED MOBILE except aeronautical mobile S5.149, 174, 175, 177, 179	74.100-74.600 MHz (0.500 MHz) MOBILE except aeronautical mobile Radio Astronomy S5.149, LT2.5		EU105 T/R 25-08 ML, 83.90-84.60 MHz duplex, channel separation: 12.5 kHz, 25 kHz
	74.600-74.800 MHz (0.200 MHz) AERONAUTICAL RADIONAVIGATION MOBILE S5.179		
74.8-75.2 MHz AERONAUTICAL RADIONAVIGATION S5.180, 181	74.800-75.200 MHz (0.400 MHz) AERONAUTICAL RADIONAVIGATION S5.180		
75.2-87.5 MHz FIXED MOBILE except aeronautical mobile S5.175, 179, 184, 187	75.200-75.400 MHz (0.200 MHz) AERONAUTICAL RADIONAVIGATION MOBILE S5.179		EU107 T/R 25-08 ML, 85.00-87.50 MHz duplex, channel separation: 12.5 kHz, 25 kHz
	75.400-76.000 MHz (0.600 MHz) MOBILE		
	76.000-77.700 MHz (1.700 MHz) BROADCASTING Mobile S5.175,		

USED ACCORDING TO RADIO REGULATIONS (FREQUENCY BAND, SERVICES, NOTES)	USED IN LITHUANIA (FREQUENCY BAND, BANDWIDTH, SERVICES, NOTES)	USED IN LITHUANIA FOR GOVERNMENT REQUIREMENTS (FREQUENCY BAND, BANDWIDTH, SERVICES, NOTES)	ADDITIONAL NOTES
---	--	--	------------------

75.2-87.5 MHz FIXED MOBILE except aeronautical mobile S5.175, 179, 184, 187	77.700-77.800 MHz (0.100 MHz) BROADCASTING Mobile S5.175,		EU107 T/R 25-08 Simplex , channel separation: 12.5 kHz, 25 kHz
	77.800-84.000 MHz (6.200 MHz) BROADCASTING Mobile S5.175,		EU107 T/R 25-08 FB, 68.00-74.80 MHz duplex channel separation: 12.5 kHz, 25 kHz
	84.000-84.600 MHz (0.600 MHz) BROADCASTING Mobile S5.175,		
	84.600-85.000 MHz (0.400 MHz) BROADCASTING Mobile S5.175,		EU107 T/R 25-08 Simplex, channel separation: 12.5 kHz, 25 kHz
	85.000-87.500 MHz (2.500 MHz) BROADCASTING Mobile S5.175,		EU107 T/R 25-08 FB, 75.20-77.70 MHz duplex, channel separation: 12.5 kHz, 25 kHz
87.5-100 MHz BROADCASTING S5.190	87.500-92.000 MHz (4.500 MHz) BROADCASTING LT2.12		

USED ACCORDING TO RADIO REGULATIONS (FREQUENCY BAND, SERVICES, NOTES)	USED IN LITHUANIA (FREQUENCY BAND, BANDWIDTH, SERVICES, NOTES)	USED IN LITHUANIA FOR GOVERNMENT REQUIREMENTS (FREQUENCY BAND, BANDWIDTH, SERVICES, NOTES)	ADDITIONAL NOTES
87.5-100 MHz BROADCASTING S5.190	92.000-100.000 MHz (8.500 MHz) BROADCASTING LT2.12		
100-108 MHz BROADCASTING S5.192, 194	100.000-108.000 MHz (8.000 MHz) BROADCASTING LT2.12		
108-117.975 MHz AERONAUTICAL RADIONAVIGATION S5.197	108.000-117.975 MHz (9.975 MHz) AERONAUTICAL RADIONAVIGATION LT2.13		
117.975-136 MHz AERONAUTICAL MOBILE (R) S5.111, 198, 199, 200, 201	117.975-121.450 MHz (3.475 MHz) AERONAUTICAL MOBILE (R) S5.111, 198, 199, 200, 201, LT2.13, LT2.14		EU 102
	121.450-121.550 MHz (0.100 MHz) MOBILE-SATELLITE (↓) AERONAUTICAL MOBILE (R) S5.111, 198, 199, 200, 201, LT2.13, LT2.15		121.500 MHz is the frequency of aeronautical distress calling and may be used only in emergency position-indicating radiobeacons (EPIRB) only in accordance with the provisions of Radio Regulations.
	121.550-136.000 MHz (14.450 MHz) AERONAUTICAL MOBILE (R) S5.111, 198, 199, 200, 201, LT2.13,LT2.14		EU 102

USED ACCORDING TO RADIO REGULATIONS (FREQUENCY BAND, SERVICES, NOTES)	USED IN LITHUANIA (FREQUENCY BAND, BANDWIDTH, SERVICES, NOTES)	USED IN LITHUANIA FOR GOVERNMENT REQUIREMENTS (FREQUENCY BAND, BANDWIDTH, SERVICES, NOTES)	ADDITIONAL NOTES
<p>136-137 MHz</p> <p>AERONAUTICAL MOBILE (R) Fixed Mobile except aeronautical mobile (R)</p> <p>S5.198, 202, 203</p>	<p>136.000-137.000 MHz (1.000 MHz)</p> <p>AERONAUTICAL MOBILE (R)</p> <p>S5.198, 202, 203, LT2.13, LT2.14</p>		EU102
<p>137-137.025 MHz</p> <p>SPACE OPERATION (↓) METEOROLOGICAL-SATELLITE (↓) MOBILE-SATELLITE (↓) S5.208A, 209 SPACE RESEARCH(↓) Fixed Mobile except aeronautical mobile (R)</p> <p>S5.204, 205, 206, 207, 208</p>	<p>137.000-137.025 MHz (0.025 MHz)</p> <p>METEOROLOGICAL-SATELLITE (↓) MOBILE MOBILE-SATELLITE(↓) S5.208A, 209 Space Operation(↓) Space Research (↓)</p> <p>S5.208, LT2.13, LT2.16</p>		EU 106
<p>137.025-137.175 MHz</p> <p>SPACE OPERATION (↓) METEOROLOGICAL-SATELLITE (↓) SPACE RESEARCH(↓) Fixed Mobile-Satellite(↓) S5.208A, 209 Mobile except aeronautical mobile (R)</p> <p>S5.204, 205, 206, 207, 208</p>	<p>137.025-137.175 MHz (0.150 MHz)</p> <p>METEOROLOGICAL-SATELLITE (↓) MOBILE Mobile-Satellite- (↓) S5.208A, 209 Space Operation(↓) Space Research (↓)</p> <p>S5.208, LT2.13, LT2.16</p>		EU 106
<p>137.175-137.825 MHz</p> <p>SPACE OPERATION (↓) METEOROLOGICAL-SATELLITE (↓) MOBILE-SATELLITE (↓) S5.208A, 209 SPACE RESEARCH(↓) Fixed Mobile except aeronautical mobile (R)</p> <p>S5.204, 205, 206, 207, 208</p>	<p>137.175-137.825 MHz (0.65 MHz)</p> <p>METEOROLOGICAL-SATELLITE (↓) MOBILE MOBILE-SATELLITE (↓) S5.208A, 209 Space Operation(↓) Space Research (↓)</p> <p>S5.208, LT2.13, LT2.16</p>		EU 106

USED ACCORDING TO RADIO REGULATIONS (FREQUENCY BAND, SERVICES, NOTES)	USED IN LITHUANIA (FREQUENCY BAND, BANDWIDTH, SERVICES, NOTES)	USED IN LITHUANIA FOR GOVERNMENT REQUIREMENTS (FREQUENCY BAND, BANDWIDTH, SERVICES, NOTES)	ADDITIONAL NOTES
<p>137.825-138 MHz</p> <p>SPACE RESEARCH(↓) METEOROLOGICAL-SATELLITE (↓) SPACE RESEARCH(↓) Fixed Mobile-Satellite(↓) S5.208A, 209 Mobile except aeronautical mobile (R)</p> <p>S5.204, 205, 206, 207, 208</p>	<p>137.825-138.000 MHz (0.175 MHz)</p> <p>METEOROLOGICAL-SATELLITE (↓) MOBILE Mobile-Satellite (↓) S5.208A, 209 Space Operation(↓) Space Research (↓)</p> <p>S5.208, LT2.13, LT2.16</p>		EU 106
<p>138-143.6 MHz</p> <p>AERONAUTICAL MOBILE (OR)</p> <p>S5.210, 211, 212, 214</p>	<p>138.000-143.600 MHz (5.600 MHz)</p> <p>AERONAUTICAL MOBILE (OR) Land Mobile Space Research (↓)</p> <p>LT2.13, LT2.14</p>		EU 102
<p>143.6-143.65 MHz</p> <p>AERONAUTICAL MOBILE (OR) SPACE RESEARCH(↓)</p> <p>S5.211, 212, 214</p>	<p>143.600-143.650 MHz (0.050 MHz)</p> <p>AERONAUTICAL MOBILE (OR) Land Mobile Space Research (↓)</p> <p>LT2.13, LT2.14</p>		EU 102
<p>143.65-144 MHz</p> <p>AERONAUTICAL MOBILE (OR)</p> <p>S5.210, 211, 212, 214</p>	<p>143.650-144.000 MHz (0.350 MHz)</p> <p>AERONAUTICAL MOBILE (OR) Land Mobile</p> <p>LT2.13, LT2.14</p>		EU 102
<p>144-146 MHz</p> <p>AMATEUR S5.120 AMATEUR-SATELLITE</p> <p>S5.216</p>	<p>144.000-146.000 MHz (2.0 MHz)</p> <p>AMATEUR S5.120 AMATEUR-SATELLITE</p> <p>LT2.13</p>		

USED ACCORDING TO RADIO REGULATIONS (FREQUENCY BAND, SERVICES, NOTES)	USED IN LITHUANIA (FREQUENCY BAND, BANDWIDTH, SERVICES, NOTES)	USED IN LITHUANIA FOR GOVERNMENT REQUIREMENTS (FREQUENCY BAND, BANDWIDTH, SERVICES, NOTES)	ADDITIONAL NOTES
---	--	--	------------------

146-148 MHz FIXED MOBILE except aeronautical mobile (R)		146.000-146.500 MHz (0.500 MHz) MOBILE Fixed LT2.13, LT2.17, LT2.18, LT2.24	EU108 T/R 25-08 Simplex, channel separation: 12.5 kHz, 25 kHz
	146.500-146.800 MHz (0.300 MHz) MOBILE Fixed LT2.13, LT2.17, LT2.18, LT2.24		
	146.800-146.850 MHz (0.050 MHz) MOBILE except aeronautical mobile (R) Fixed LT2.13, LT2.17, LT2.18, LT2.24		EU108 T/R 25-08 ML, 151.400-152.600 MHz duplex, channel separation: 12.5 kHz, 25 kHz
		146.850-146.875 MHz (0.025 MHz) MOBILE except aeronautical mobile (R) Fixed LT2.13, LT2.17, LT2.18, LT2.24	
	146.875-147.000 MHz (0.125 MHz) MOBILE except aeronautical mobile (R) Fixed LT2.13, LT2.17, LT2.18, LT2.24		
		147.000-147.500 MHz (0.500 MHz) MOBILE except aeronautical mobile (R) Fixed LT2.13, LT2.17, LT2.18, LT2.24	

USED ACCORDING TO RADIO REGULATIONS (FREQUENCY BAND, SERVICES, NOTES)	USED IN LITHUANIA (FREQUENCY BAND, BANDWIDTH, SERVICES, NOTES)	USED IN LITHUANIA FOR GOVERNMENT REQUIREMENTS (FREQUENCY BAND, BANDWIDTH, SERVICES, NOTES)	ADDITIONAL NOTES
146-148 MHz FIXED MOBILE except aeronautical mobile (R)	147.500-147.700 MHz (0.200 MHz) MOBILE except aeronautical mobile (R) Fixed LT2.13, LT2.17, LT2.18, LT2.24		
	147.725-148.000 MHz (0.275 MHz) MOBILE except aeronautical mobile (R) Fixed LT2.13, LT2.17, LT2.18, LT2.24	147.700-147.725 MHz (0.025 MHz) MOBILE except aeronautical mobile (R) Fixed LT2.13, LT2.17, LT2.18, LT2.24	
148-149,9 MHz FIXED MOBILE except aeronautical mobile (P) MOBILE-SATELLITE (↑) S5.209 55.218, 219, 221	148.000-148.400 MHz (0.400 MHz) MOBILE-SATELLITE (↑) S5.209 S5.218, 219, LT2.13, LT2.24	148.000-148.400 MHz (0.400 MHz) MOBILE Fixed S5.218, 219, LT2.13, LT2.17, LT2.18, LT2.24	EU106, EU108 T/R 25-08 ML, 152.600-153.000 MHz duplex, channel separation: 12.5 kHz, 25 kHz
	148.400-148.975 MHz (0.575 MHz) MOBILE-SATELLITE (↑) S5.209 S5.218, 219, LT2.13, LT2.24	148.400-148.975 MHz (0.575 MHz) MOBILE Fixed S5.218, 219, LT2.13, LT2.17, LT2.18, LT2.24	EU106, EU108 T/R 25-08 ML, 153.000-154.500 MHz duplex, channel separation: 12.5 kHz, 25 kHz

USED ACCORDING TO RADIO REGULATIONS (FREQUENCY BAND, SERVICES, NOTES)	USED IN LITHUANIA (FREQUENCY BAND, BANDWIDTH, SERVICES, NOTES)	USED IN LITHUANIA FOR GOVERNMENT REQUIREMENTS (FREQUENCY BAND, BANDWIDTH, SERVICES, NOTES)	ADDITIONAL NOTES
148-149.9 MHz FIXED MOBILE except aeronautical mobile (R) MOBILE-SATELLITE (↑) S5.209 S5.218, 219, 221	148.975-149.100 MHz (0.125 MHz) MOBILE-SATELLITE (↑) S5.209 MOBILE Fixed S5.218, 219, LT2.13, LT2.17, LT2.18, LT2.24		
	149.100-149.900 MHz (0.800 MHz) MOBILE-SATELLITE (↑) S5.209 S5.218, 219, LT2.13	149.100-149.900 MHz (0.800 MHz) MOBILE Fixed S5.218, 219, LT2.13, LT2.17, LT2.18, LT2.24	
149.9-150.05 MHz RADIONAVIGATION- SATELLITE S5.220, 222, 223 LAND MOBILE- SATELLITE (↑) S5.209, 224 S5.209, 224	149.900-149.975 MHz (0.075 MHz) MOBILE-SATELLITE (↑) S5.209, 224 S5.209, 224, LT2.13	149.900-149.975 MHz (0.075 MHz) MOBILE Fixed S5.209, 224, LT2.13, LT2.17, LT2.18, LT2.24	EU 106 T/R 25-08 Simplex, channel separation: 12.5 kHz, 25 kHz
	149.975-150.050 MHz (0.075 MHz) MOBILE-SATELLITE (↑) S5.209, 224 MOBILE Fixed S5.209, 224, LT2.13, LT2.17, LT2.18, LT2.24		
150.05-153 MHz FIXED MOBILE except aeronautical mobile RADIO ASTRONOMY S5.149	150.050-150.650 MHz (0.600 MHz) MOBILE except aeronautical mobile RADIO ASTRONOMY Fixed S5.149, LT2.13, LT2.17, LT2.18, LT2.24		EU108 T/R 25-08 ML, 154.650-156.000 MHz duplex, channel separation: 12.5 kHz, 25 kHz

USED ACCORDING TO RADIO REGULATIONS (FREQUENCY BAND, SERVICES, NOTES)	USED IN LITHUANIA (FREQUENCY BAND, BANDWIDTH, SERVICES, NOTES)	USED IN LITHUANIA FOR GOVERNMENT REQUIREMENTS (FREQUENCY BAND, BANDWIDTH, SERVICES, NOTES)	ADDITIONAL NOTES
---	--	--	------------------

150.05-153 MHz FIXED MOBILE except aeronautical mobile RADIO ASTRONOMY S5.149	150.650-151.000 MHz (0.350 MHz) RADIO ASTRONOMY S5.149, LT2.13, LT2.24	150.650-151.000 MHz (0.350 MHz) MOBILE except aeronautical mobile Fixed S5.149, LT2.13, LT2.17, LT2.18, LT2.24	
	151.000-151.050 MHz (0.050 MHz) MOBILE except aeronautical mobile RADIO ASTRONOMY Fixed S5.149, LT2.13, LT2.24		
	151.050-151.150 MHz (0.100 MHz) RADIO ASTRONOMY S5.149, LT2.13	151.050-151.150 MHz (0.100 MHz) MOBILE except aeronautical mobile S5.149, LT2.13, LT2.24	
	151.150-151.400 MHz (0.300 MHz) MOBILE except aeronautical mobile RADIO ASTRONOMY Fixed S5.149, LT2.13, LT2.24		
	151.400-151.475 MHz (0.075 MHz) MOBILE except aeronautical mobile RADIO ASTRONOMY Fixed S5.149, LT2.13, LT2.17, LT2.18, LT2.24		EU108 T/R 25-08 FB, 146.800-148.400 MHz duplex, channel separation: 12.5 kHz, 25 kHz

USED ACCORDING TO RADIO REGULATIONS (FREQUENCY BAND, SERVICES, NOTES)	USED IN LITHUANIA (FREQUENCY BAND, BANDWIDTH, SERVICES, NOTES)	USED IN LITHUANIA FOR GOVERNMENT REQUIREMENTS (FREQUENCY BAND, BANDWIDTH, SERVICES, NOTES)	ADDITIONAL NOTES
150.05-153 MHz FIXED MOBILE except aeronautical mobile RADIO ASTRONOMY S5.149	151.475-151.700 MHz (0.225 MHz) RADIO ASTRONOMY S5.149, LT2.13	151.475-151.700 MHz (0.225 MHz) MOBILE except aeronautical mobile Fixed S5.149, LT2.13, LT2.17, LT2.18, LT2.24	
	151.700-152.000 MHz (0.300 MHz) MOBILE except aeronautical mobile RADIO ASTRONOMY Fixed S5.149, LT2.13, LT2.17, LT2.18, LT2.24		
153-154 MHz FIXED MOBILE except aeronautical mobile (R) Meteorological Aids	153.000-154.000 MHz (1.000 MHz) MOBILE except aeronautical mobile (R) Fixed LT2.13, LT2.17, LT2.18, LT2.24		EU108 T/R 25-08 FB 148.400-149.900 MHz duplex, channel separation: 12.5 kHz, 25 kHz
154-156.7625 MHz FIXED MOBILE except aeronautical mobile (R) S5.226, 227	154.000-154.500 MHz (0.500 MHz) MOBILE except aeronautical mobile (R) Fixed S5.226, 227, LT2.13, LT2.17, LT2.18, LT2.24		

USED ACCORDING TO RADIO REGULATIONS (FREQUENCY BAND, SERVICES, NOTES)	USED IN LITHUANIA (FREQUENCY BAND, BANDWIDTH, SERVICES, NOTES)	USED IN LITHUANIA FOR GOVERNMENT REQUIREMENTS (FREQUENCY BAND, BANDWIDTH, SERVICES, NOTES)	ADDITIONAL NOTES
---	--	--	------------------

154-156.7625 MHz FIXED MOBILE except aeronautical mobile (R) S5.226, 227	154.500-154.650 MHz (0.150 MHz) MOBILE except aeronautical mobile (R) Fixed S5.226, 227, LT2.13, LT2.17, LT2.18, LT2.24		EU108 T/R 25-08 Simplex, channel separation: 12.5 kHz, 25 kHz
	154.650-156.000 MHz (1.350 MHz) MOBILE except aeronautical mobile (R) S5.226, 227, LT2.13, LT2.17, LT2.18, LT2.24		EU108 T/R 25-08 FB 150.050-151.400 MHz duplex, channel separation: 12.5 kHz, 25 kHz
	156.000-156.300 MHz (0.300 MHz) MOBILE except aeronautical mobile (R) S5.226, 227, LT2.13, LT2.19, LT2.24	156.000-156.300 MHz (0.300 MHz) Land Mobile S5.226, 227, LT2.13, LT2.19, LT2.24	EU108, EU109 Ship Stations, 160.600-160.950 MHz duplex Simplex 156.375-156.5125 MHz:
	156.300-156.5125 MHz (0.2125 MHz) MOBILE except aeronautical mobile (R) Fixed S5.226, 227, LT2.13, LT2.19, LT2.24		
	156.5125-156.5375 MHz (0.0250 MHz) MARITIME MOBILE S5.226, 227, LT2.13, LT2.15, LT2.24		156.525 MHz is the distress and calling frequency for the maritime mobile service for digital selective-calling and is used only in accordance with the provisions of Radio Regulations.
	156.5375-156.7625 MHz (0.2245 MHz) MOBILE except aeronautical mobile (R) Fixed S5.226, 227, LT2.13, LT2.19, LT2.24		EU108, EU109 Simplex

USED ACCORDING TO RADIO REGULATIONS (FREQUENCY BAND, SERVICES, NOTES)	USED IN LITHUANIA (FREQUENCY BAND, BANDWIDTH, SERVICES, NOTES)	USED IN LITHUANIA FOR GOVERNMENT REQUIREMENTS (FREQUENCY BAND, BANDWIDTH, SERVICES, NOTES)	ADDITIONAL NOTES
156.7625-156.8375 MHz MARITIME MOBILE (distress and calling) S5.111, 226	156.7625-156.8375 MHz (0.075 MHz) MARITIME MOBILE (distress and calling) S5.111, 226, LT2.13, LT2.15, LT2.24		156.800 MHz is the international distress and calling frequency for the maritime mobile service and is used only in accordance with the provisions of Radio Regulations.
156.8375-174 MHz FIXED MOBILE except aeronautical mobile S5.226, 229	156.8375-157.450 MHz (0.6125 MHz) MOBILE except aeronautical mobile Fixed S5.226, LT2.13, LT2.19, LT2.24		EU108, EU109 Ship Stations, 161.500-162.050 MHz duplex Simplex 156.850 MHz: (156.8375-156.8750)
	157.450-160.600 MHz (3.150 MHz) MOBILE except aeronautical mobile Fixed S5.226, LT2.13, LT2.17, LT2.18, LT2.24		EU108 T/R 25-08 ML, 162.050-165.200 MHz duplex, channel separation: 12.5 kHz, 25 kHz
	160.600-160.975 MHz (0.375 MHz) MOBILE except aeronautical mobile Fixed S5.226, LT2.13, LT2.19, LT2.24		EU108, EU109 Coast Stations, 156.000-156.375 MHz duplex
	160.975-161.475 MHz (0.500 MHz) MOBILE except aeronautical mobile Fixed S5.226, LT2.13, LT2.17, LT2.18, LT2.24		EU108 T/R 25-08 Simplex, channel separation: 12.5 kHz, 25 kHz
	161.475-162.050 MHz (0.575 MHz) MOBILE except aeronautical mobile Fixed S5.226, LT2.13, LT2.19, LT2.24		EU108, EU109 Coast Stations, 156.875-157.450 MHz duplex

USED ACCORDING TO RADIO REGULATIONS (FREQUENCY BAND, SERVICES, NOTES)	USED IN LITHUANIA (FREQUENCY BAND, BANDWIDTH, SERVICES, NOTES)	USED IN LITHUANIA FOR GOVERNMENT REQUIREMENTS (FREQUENCY BAND, BANDWIDTH, SERVICES, NOTES)	ADDITIONAL NOTES
---	--	--	------------------

156.8375-174 MHz FIXED MOBILE except aeronautical mobile SS.226, 229	160.975-161.475 MHz (0.500 MHz) MOBILE except aeronautical mobile Fixed SS.226, 1.T2.13, 1.T2.17, 1.T2.18, 1.T2.24		EU108 T/R 25-08 Simplex, channel separation: 12.5 kHz, 25 kHz
	161.475-162.050 MHz (0.575 MHz) MOBILE except aeronautical mobile Fixed SS.226, 1.T2.13, 1.T2.19, 1.T2.24		EU108, EU109 Coast Stations, 156.875-157.450 MHz duplex
	162.050-165.200 MHz (3.150 MHz) MOBILE except aeronautical mobile Fixed SS.226, 1.T2.13, 1.T2.17, 1.T2.18, 1.T2.24		EU108 T/R 25-08 F3 157.450-160.600 MHz duplex, channel separation: 12.5 kHz, 25 kHz
	165.200-165.225 MHz (0.025 MHz) MOBILE except aeronautical mobile Fixed SS.226, 1.T2.13, 1.T2.17, 1.T2.18, 1.T2.24		
	165.225-168.100 MHz (2.900 MHz) MOBILE except aeronautical mobile Fixed SS.226, 1.T2.13, 1.T2.17, 1.T2.18, 1.T2.24		EU108 T/R 25-08 M1, 169.825-174.000 MHz duplex, channel separation: 12.5 kHz, 25 kHz
		168.100-168.300 MHz (0.200 MHz) MOBILE except aeronautical mobile Fixed SS.226, 1.T2.13, 1.T2.17, 1.T2.18, 1.T2.24	

USED ACCORDING TO RADIO REGULATIONS (FREQUENCY BAND, SERVICES, NOTES)	USED IN LITHUANIA (FREQUENCY BAND, BANDWIDTH, SERVICES, NOTES)	USED IN LITHUANIA FOR GOVERNMENT REQUIREMENTS (FREQUENCY BAND, BANDWIDTH, SERVICES, NOTES)	ADDITIONAL NOTES
---	--	--	------------------

156.8375-174 MHz FIXED MOBILE except aeronautical mobile S5.226, 229	168.300-169.400 MHz (3.100 MHz) MOBILE except aeronautical mobile Fixed S5.226, LT2.13, LT2.17, LT2.18, LT2.24		
	169.400-169.825 MHz (0.425 MHz) MOBILE except aeronautical mobile S5.226, LT2.13, LT2.20, LT2.24		EU108 CEPT/ERC/DEC(94)02 T/R 25-08 Simplex, channel separation: 12.5 kHz, 25 kHz
	169.825-170.675 MHz (0.875 MHz) MOBILE except aeronautical mobile Fixed S5.226, LT2.13, LT2.17, LT2.18, LT2.24		EU108 T/R 25-08 FB, 165.225-169.400 MHz duplex, channel separation: 12.5 kHz, 25 kHz
		170.675-170.850 MHz (0.175 MHz) MOBILE except aeronautical mobile Fixed S5.226, LT2.13, LT2.17, LT2.18, LT2.24	
	170.850-171.000 MHz (0.150 MHz) MOBILE except aeronautical mobile Fixed S5.226, LT2.13, LT2.17, LT2.18, LT2.24		
		171.000-172.975 MHz (1.975 MHz) MOBILE except aeronautical mobile Fixed S5.226, LT2.13, LT2.17, LT2.18, LT2.24	

USED ACCORDING TO RADIO REGULATIONS (FREQUENCY BAND, SERVICES, NOTES)	USED IN LITHUANIA (FREQUENCY BAND, BANDWIDTH, SERVICES, NOTES)	USED IN LITHUANIA FOR GOVERNMENT REQUIREMENTS (FREQUENCY BAND, BANDWIDTH, SERVICES, NOTES)	ADDITIONAL NOTES
156.8375-174 MHz FIXED MOBILE except aeronautical mobile S5.226, 229	172.975-173.100 MHz (0.125 MHz) MOBILE except aeronautical mobile Fixed S5.226, LT2.13, LT2.17, LT2.18, LT2.24		
		173.100-174.000 MHz (0.900 MHz) MOBILE except aeronautical mobile Fixed S5.226, LT2.13, LT2.17, LT2.18, LT2.24	
174-223 MHz BROADCASTING Land Mobile S5.235, 237, 243, 244	174.000-175.500 MHz (1.500 MHz) BROADCASTING Land Mobile LT2.22, LT2.23		EU103 T/R 25-05, channel separation: 12.5 kHz T/R 52-02
	175.500-216.000 MHz (40.500 MHz) BROADCASTING Land Mobile LT2.22, LT2.23		
	216.000-223.000 MHz (7.000 MHz) BROADCASTING LT2.22		T/R 52-02

USED ACCORDING TO RADIO REGULATIONS (FREQUENCY BAND, SERVICES, NOTES)	USED IN LITHUANIA (FREQUENCY BAND, BANDWIDTH, SERVICES, NOTES)	USED IN LITHUANIA FOR GOVERNMENT REQUIREMENTS (FREQUENCY BAND, BANDWIDTH, SERVICES, NOTES)	ADDITIONAL NOTES
223-230 MHz BROADCASTING Fixed Mobile S5.236, 243, 244, 247, 248	223.000-225.000 MHz (2.000 MHz) BROADCASTING LT2.22		T/R 52-02
	225.000-230.000 MHz (7.000 MHz) BROADCASTING LT2.22		EU101 T/R 52-02
230-235 MHz FIXED MOBILE S5.244, 247, 248, 251	230.000-235.000 MHz (5.000 MHz) BROADCASTING LT2.13, LT2.22		EU101 T/R 52-02
235-267 MHz FIXED MOBILE S5.111, 199, 248, 254, 256	235.000-240.000 MHz (5.000 MHz) BROADCASTING S5.111, 199, 254, 256, LT2.13, LT2.22, LT2.24		EU101 T/R 52-02
		240.000-242.950 MHz (2.950 MHz) MOBILE S5.111, 199, 254, 256, LT2.13	EU101
	242.950-243.050 MHz (0.020 MHz) MOBILE-SATELLITE (↑) AERONAUTICAL MOBILE S5.111, 199, 254, 256, LT2.13, LT2.25		243.000 MHz is the frequency of distress calling and may be used only in emergency position-indicating radiobeacons (EPIRB) in accordance with the provisions of Radio Regulations.

USED ACCORDING TO RADIO REGULATIONS (FREQUENCY BAND, SERVICES, NOTES)	USED IN LITHUANIA (FREQUENCY BAND, BANDWIDTH, SERVICES, NOTES)	USED IN LITHUANIA FOR GOVERNMENT REQUIREMENTS (FREQUENCY BAND, BANDWIDTH, SERVICES, NOTES)	ADDITIONAL NOTES
<p>235-267 MHz</p> <p>FIXED MOBILE</p> <p>S5.111, 199, 248, 254, 256</p>		<p>243.050-267.000 MHz (23.950 MHz)</p> <p>MOBILE</p> <p>S5.111, 199, 254, 256, LT2.13</p>	EU101
<p>267-272 MHz</p> <p>FIXED MOBILE Space Operation(↓)</p> <p>S5.254, 257</p>		<p>267.000-272.000 MHz (5.000 MHz)</p> <p>MOBILE</p> <p>S5.254, 257, LT2.13</p>	EU101
<p>272-273 MHz</p> <p>SPACE OPERATION (↓) FIXED MOBILE</p> <p>S5.254</p>		<p>272.000-273.000 MHz (1.000 MHz)</p> <p>MOBILE</p> <p>S5.254, LT2.13</p>	EU101
<p>273-312 MHz</p> <p>FIXED MOBILE</p> <p>S5.254</p>		<p>273.000-300.000 MHz (27.000 MHz)</p> <p>MOBILE</p> <p>S5.254, LT2.13</p>	EU101
	<p>300.000-301.000 MHz (1.000 MHz)</p> <p>MOBILE</p> <p>S5.254, LT2.13</p>		

USED ACCORDING TO RADIO REGULATIONS (FREQUENCY BAND, SERVICES, NOTES)	USED IN LITHUANIA (FREQUENCY BAND, BANDWIDTH, SERVICES, NOTES)	USED IN LITHUANIA FOR GOVERNMENT REQUIREMENTS (FREQUENCY BAND, BANDWIDTH, SERVICES, NOTES)	ADDITIONAL NOTES
<p>273-312 MHz</p> <p>FIXED MOBILE</p> <p>S5.254</p>	<p>301.000-306.000 MHz (5.000 MHz)</p> <p>MOBILE</p> <p>S5.254, LT2.13</p>		
	<p>306.000-307.500 MHz (1.500 MHz)</p> <p>MOBILE</p> <p>S5.254, LT2.13</p>		
	<p>307.500-308.000 MHz (0.500 MHz)</p> <p>MOBILE</p> <p>S5.254, LT2.13</p>		
		<p>308.000-312.000 MHz (4.000 MHz)</p> <p>MOBILE</p> <p>S5.254, LT2.13</p>	
<p>312-315 MHz</p> <p>FIXED MOBILE Mobile-Satellite (↑) S5.254, 255</p>		<p>312.000-314.500 MHz (2.500 MHz)</p> <p>MOBILE</p> <p>S5.254, 255, LT2.13</p>	EU101
	<p>314.500-315.000 MHz (0.500 MHz)</p> <p>Mobile</p> <p>S5.254, 255, LT2.13, LT2.21</p>	<p>314.500-315.000 MHz (0.500 MHz)</p> <p>MOBILE</p> <p>S5.254, 255, LT2.13, LT2.21</p>	

USED ACCORDING TO RADIO REGULATIONS (FREQUENCY BAND, SERVICES, NOTES)	USED IN LITHUANIA (FREQUENCY BAND, BANDWIDTH, SERVICES, NOTES)	USED IN LITHUANIA FOR GOVERNMENT REQUIREMENTS (FREQUENCY BAND, BANDWIDTH, SERVICES, NOTES)	ADDITIONAL NOTES
315-322 MHz FIXED MOBILE S5.254	315.000-315.500 MHz (0.500 MHz) Mobile S5.254, LT2.13, LT2.21	315.000-315.500 MHz (0.500 MHz) MOBILE S5.254, LT2.13, LT2.21	EU101
		315.500-322.000 MHz (6.500 MHz) MOBILE S5.25, LT2.13	
322-328.6 MHz FIXED MOBILE RADIO ASTRONOMY S5.149		322.000-328.600 MHz (6.600 MHz) MOBILE RADIO ASTRONOMY S5.149, LT2.13	EU101
328.6-335.4 MHz AERONAUTICAL RADIONAVIGATION S5.258, 259	328.600-335.400 MHz (6.800 MHz) AERONAUTICAL RADIONAVIGATION S5.258, LT2.13		EU107
335.4-387 MHz FIXED MOBILE S5.254	335.400-336.000 MHz (0.600 MHz) MOBILE S5.254, LT2.13		EU101, EU108
	336.000-337.000 MHz (1.000 MHz) MOBILE S5.254, LT2.13		

USED ACCORDING TO RADIO REGULATIONS (FREQUENCY BAND, SERVICES, NOTES)	USED IN LITHUANIA (FREQUENCY BAND, BANDWIDTH, SERVICES, NOTES)	USED IN LITHUANIA FOR GOVERNMENT REQUIREMENTS (FREQUENCY BAND, BANDWIDTH, SERVICES, NOTES)	ADDITIONAL NOTES
---	--	--	------------------

335.4-387 MHz FIXED MOBILE <u>S5.254</u>	337.000-342.000 MHz (5.000 MHz) MOBILE <u>S5.254</u> , LT2.13		
	342.000-343.500 MHz (1.500 MHz) MOBILE Fixed <u>S5.254</u> , LT2.13		
	343.500-344.000 MHz (0.500 MHz) MOBILE Fixed <u>S5.254</u> , LT2.13		
		344.000-380.000 MHz (36.000 MHz) MOBILE <u>S5.254</u> , LT2.13	
		380.000-385.000 MHz (5.000 MHz) MOBILE <u>S5.254</u> , LT2.13, LT2.26	EU101 ERC/DEC/(96)01 T/R 02-02, T/R 22-05 ML, 390-395 duplex, channel separation: 12.5 kHz, 25 kHz

USED ACCORDING TO RADIO REGULATIONS (FREQUENCY BAND, SERVICES, NOTES)	USED IN LITHUANIA (FREQUENCY BAND, BANDWIDTH, SERVICES, NOTES)	USED IN LITHUANIA FOR GOVERNMENT REQUIREMENTS (FREQUENCY BAND, BANDWIDTH, SERVICES, NOTES)	ADDITIONAL NOTES
335.4-387 MHz FIXED MOBILE S5.254	385.000-387.000 MHz (2.000 MHz) MOBILE S5.254, LT2.13, LT2.27		EU101 ERC/DEC/(96)04 T/R 22-05 ML, 395.000-397.000 MHz duplex, channel separation 12.5 kHz, 25 kHz
387-390 MHz FIXED MOBILE Mobile-Satellite (↓) S5.254, 255, 208A	387.000-390.000 MHz (3.000 MHz) MOBILE S5.254, 255, 208A, LT2.13, LT2.27		EU101 ERC/DEC/(96)04 T/R 22-05 ML, 397.000-399.900 MHz duplex, channel separation: 12.5 kHz, 25 kHz
390-399.9 MHz FIXED MOBILE S5.254		390.000-395.000 MHz (5.000 MHz) MOBILE S5.254, LT2.13, LT2.26	EU101 ERC/DEC/(96)01 T/R 02-02, T/R 22-05 FB, 380.000-385.900 MHz duplex, channel separation: 12.5 kHz, 25 kHz
	395.000-399.900 MHz (4.900 MHz) MOBILE S5.254, LT2.13, LT2.27		EU101 ERC/DEC/(96)04 T/R 22-05 FB, 385.000-389.900 MHz duplex, channel separation: 12.5 kHz, 25 kHz
399.9-400.05 MHz RADIONAVIGATION-SATELLITE S5.222, 260 MOBILE-SATELLITE (↑) S5.209 S5.220, 224	399.900-400.000 MHz (0.100 MHz) RADIONAVIGATION-SATELLITE LAND MOBILE-SATELLITE (↑) S5.209 S5.220, 224, LT2.13		

USED ACCORDING TO RADIO REGULATIONS (FREQUENCY BAND, SERVICES, NOTES)	USED IN LITHUANIA (FREQUENCY BAND, BANDWIDTH, SERVICES, NOTES)	USED IN LITHUANIA FOR GOVERNMENT REQUIREMENTS (FREQUENCY BAND, BANDWIDTH, SERVICES, NOTES)	ADDITIONAL NOTES
<p>399.9-400.05 MHz</p> <p>RADIONAVIGATION-SATELLITE S5.222, 260</p> <p>MOBILE-SATELLITE (↑) S5.209</p> <p>S5.220, 224</p>	<p>400.000-400.050 MHz (0.050 MHz)</p> <p>MOBILE</p> <p>S5.220, 224, LT2.13</p>		
<p>400.05-400.15 MHz</p> <p>STANDARD FREQUENCY AND TIME SIGNALS-SATELLITE (400.1 MHz)</p> <p>S5.261, 262</p>	<p>400.050-400.150 MHz (0.100 MHz)</p> <p>STANDARD FREQUENCY AND TIME SIGNALS-SATELLITE (400.1 MHz)</p> <p>S5.261, LT2.13</p>		
<p>400.15-401 MHz</p> <p>METEOROLOGICAL AIDS</p> <p>METEOROLOGICAL-SATELLITE (↓)</p> <p>MOBILE-SATELLITE (↓) S5.209, 208A</p> <p>SPACE RESEARCH(↓) S5.263</p> <p>Space Operation (↓)</p> <p>S5.262, 264</p>	<p>400.150-401.000 MHz (0.850 MHz)</p> <p>METEOROLOGICAL AIDS</p> <p>SPACE RESEARCH(↓) S5.263</p> <p>MOBILE-SATELLITE (↓) S5.209, 208A</p> <p>METEOROLOGICAL-SATELLITE (↓)</p> <p>S5.264, LT2.13</p>		
<p>401-402 MHz</p> <p>METEOROLOGICAL AIDS</p> <p>SPACE OPERATION (↑)</p> <p>Earth Exploration-Satellite(↑)</p> <p>Fixed</p> <p>Meteorological-Satellite (↑)</p> <p>Mobile except aeronautical mobile</p>	<p>401.000-402.000 MHz (1.000 MHz)</p> <p>METEOROLOGICAL AIDS</p> <p>EARTH EXPLORATION-SATELLITE(↑)</p> <p>LT2.13</p>	<p>401.000-402.000 MHz (1.000 MHz)</p> <p>Mobile except aeronautical mobile</p> <p>LT2.13</p>	<p>EU110</p>
<p>402-403 MHz</p> <p>METEOROLOGICAL AIDS</p> <p>Earth Exploration-Satellite(↑)</p> <p>Fixed</p> <p>Meteorological-Satellite (↑)</p> <p>Mobile except aeronautical mobile</p>	<p>402.000-403.000 MHz (1.000 MHz)</p> <p>METEOROLOGICAL AIDS</p> <p>EARTH EXPLORATION-SATELLITE(↑)</p> <p>LT2.13</p>	<p>402.000-403.000 MHz (1.000 MHz)</p> <p>Mobile except aeronautical mobile</p> <p>LT2.13</p>	<p>EU110</p>

USED ACCORDING TO RADIO REGULATIONS (FREQUENCY BAND, SERVICES, NOTES)	USED IN LITHUANIA (FREQUENCY BAND, BANDWIDTH, SERVICES, NOTES)	USED IN LITHUANIA FOR GOVERNMENT REQUIREMENTS (FREQUENCY BAND, BANDWIDTH, SERVICES, NOTES)	ADDITIONAL NOTES
403-406 MHz METEOROLOGICAL AIDS Fixed Mobile except aeronautical mobile	403.000-406.000 MHz (2.000 MHz) METEOROLOGICAL AIDS LT2.13	403.000-406.000 MHz (3.000 MHz) LT2.13	EU110
406-406.1 MHz MOBILE-SATELLITE (↑) S5.266, 267	406.000-406.100 MHz (0.100 MHz) MOBILE-SATELLITE (↑) S5.266, 267, LT2.13, LT2.25		The band 406-406.100 MHz may be used only for emergency position-indicating radiobeacons (EPIRB) in accordance with the provisions of Radio Regulations.
406.1-410 MHz FIXED MOBILE except aeronautical mobile RADIO ASTRONOMY S5.149	406.100-410.000 MHz (3.900 MHz) RADIO ASTRONOMY S5.149, LT2.13	406.100-410.000 MHz (3.900 MHz) LAND MOBILE S5.149, LT2.13	Simplex, channel separation: 12.5 kHz, 25 kHz
410-420 MHz FIXED MOBILE except aeronautical mobile Space Research (↔) S5.269	413.000-420.000 MHz (7.000 MHz) MOBILE except aeronautical mobile LT2.13, LT2.17, LT2.26	410.000-413.000 MHz (3.000 MHz) MOBILE except aeronautical mobile LT2.13, LT2.17, LT2.26	EU108 ERC/DEC/(96)04 T/R 22-05 T/R 25-08 ML, 420.000-430.000 MHz duplex, channel separation: 12.5 kHz

USED ACCORDING TO RADIO REGULATIONS (FREQUENCY BAND, SERVICES, NOTES)	USED IN LITHUANIA (FREQUENCY BAND, BANDWIDTH, SERVICES, NOTES)	USED IN LITHUANIA FOR GOVERNMENT REQUIREMENTS (FREQUENCY BAND, BANDWIDTH, SERVICES, NOTES)	ADDITIONAL NOTES
---	--	--	------------------

420-430 MHz FIXED MOBILE except aeronautical mobile Radiolocation S5.268, 270, <u>271</u>	420.000-423.000 MHz (3.000 MHz) MOBILE except aeronautical mobile S5. <u>271</u> , LT2.13, LT2.17, LT2.26		EU108 ERC/DEC/(96)04 T/R 22-05 T/R 25-08 FB, 410.000-420.000 MHz duplex, channel separation: 12.5 kHz
	423.000-430.000 MHz (7.000 MHz) MOBILE except aeronautical mobile S5. <u>271</u> , LT2.13, LT2.17, LT2.26		
430-440 MHz AMATEUR RADIOLOCATION S5. <u>138</u> , <u>271</u> , 272, 273, 274, 275, 276, 277, 280, 281, <u>282</u> , 283	430.000-433.050 MHz (3.050 MHz) AMATEUR RADIOLOCATION S5. <u>138</u> , <u>271</u> , LT2.13		EU107, EU111
	433.050-434.790 MHz (10.000 MHz) AMATEUR RADIOLOCATION Land Mobile S5. <u>138</u> , <u>271</u> , LT2.6, LT2.8, LT2.13		EU 107, EU111 ERC/REC 70-03
	434.790-438.000 MHz (10.000 MHz) AMATEUR AMATEUR-SATELLITE RADIOLOCATION S5. <u>138</u> , <u>271</u> , LT2.13		EU107, EU111

USED ACCORDING TO RADIO REGULATIONS (FREQUENCY BAND, SERVICES, NOTES)	USED IN LITHUANIA (FREQUENCY BAND, BANDWIDTH, SERVICES, NOTES)	USED IN LITHUANIA FOR GOVERNMENT REQUIREMENTS (FREQUENCY BAND, BANDWIDTH, SERVICES, NOTES)	ADDITIONAL NOTES
---	--	--	------------------

<p>430-440 MHz</p> <p>AMATEUR RADIOLOCATION</p> <p>S5.138, 271, 272, 273, 274, 275, 276, 277, 280, 281, 282, 283</p>	<p>438.000-440.000 MHz (10.000 MHz)</p> <p>AMATEUR RADIOLOCATION</p> <p>S5.138, 271, 282, LT2.13</p>		EU107, EU111
<p>440-450 MHz</p> <p>FIXED MOBILE except aeronautical mobile Radiolocation</p> <p>S5.268, 270, 271, 284, 285, 286</p>	<p>440.000-442.525 MHz (2.525 MHz)</p> <p>MOBILE except aeronautical mobile Fixed</p> <p>S5.271, 286, LT2.13, LT2.17, LT2.18</p>		EU108
	<p>442.525-444.525 MHz (2.000 MHz)</p> <p>MOBILE except aeronautical mobile Fixed</p> <p>S5.271, 286, LT2.13, LT2.17, LT2.18</p>		
	<p>444.525-445.000 MHz (5.475 MHz)</p> <p>MOBILE except aeronautical mobile Fixed</p> <p>S5.271, 286, LT2.13, LT2.17, LT2.18</p>		
	<p>445.000-446.000 MHz (1.000 MHz)</p> <p>MOBILE except aeronautical mobile Fixed</p> <p>S5.271, 286, LT2.13, LT2.17, LT2.18</p>		

USED ACCORDING TO RADIO REGULATIONS (FREQUENCY BAND, SERVICES, NOTES)	USED IN LITHUANIA (FREQUENCY BAND, BANDWIDTH, SERVICES, NOTES)	USED IN LITHUANIA FOR GOVERNMENT REQUIREMENTS (FREQUENCY BAND, BANDWIDTH, SERVICES, NOTES)	ADDITIONAL NOTES
<p>440-450 MHz</p> <p>FIXED MOBILE except aeronautical mobile Radiolocation</p> <p>S5.268, 270, 271, 284, 285, 286</p>	<p>446.000-446.100 MHz (0.100 MHz)</p> <p>MOBILE except aeronautical mobile</p> <p>S5.271, 286, LT2.13</p>		
	<p>446.100-450.000 MHz (3.900 MHz)</p> <p>MOBILE except aeronautical mobile Fixed</p> <p>S5.271, 286, LT2.13, LT2.17, LT2.18</p>		
<p>450-455 MHz</p> <p>FIXED MOBILE</p> <p>S5.271, 286</p>	<p>450.000-453.000 MHz (5.000 MHz)</p> <p>MOBILE Fixed</p> <p>S5.271, 286, LT2.13, LT2.17, LT2.18, LT2.27, LT2.28</p>		<p>EU108</p> <p>ERC/DEC/(96)04 T/R 22-05</p> <p>T/R 25-08 ML, 460.000-463.000 MHz duplex, channel separation: 12.5 kHz, 25 kHz</p>
	<p>453.000-455.000 MHz (5.000 MHz)</p> <p>MOBILE Fixed</p> <p>S5.271, 286, LT2.13, LT2.17, LT2.18, LT2.27, LT2.28</p>		<p>EU108</p> <p>ERC/DEC/(96)04 T/R 22-05 T/R 25-08 ML, 463.000-465.000 MHz duplex, channel separation: 12.5 kHz, 25 kHz</p>
<p>455-456 MHz</p> <p>FIXED MOBILE</p> <p>S5.271, 286B</p>	<p>455.000-456.000 MHz (1.000 MHz)</p> <p>MOBILE Fixed</p> <p>S5.271, 286B, LT2.13, LT2.17, LT2.18, LT2.27, LT2.28</p>		<p>EU108</p> <p>ERC/DEC/(96)04 T/R 22-01, T/R 22-05 T/R 25-08 ML, 465.000-466.000 MHz duplex, channel separation: 12.5 kHz, 25 kHz</p>

USED ACCORDING TO RADIO REGULATIONS (FREQUENCY BAND, SERVICES, NOTES)	USED IN LITHUANIA (FREQUENCY BAND, BANDWIDTH, SERVICES, NOTES)	USED IN LITHUANIA FOR GOVERNMENT REQUIREMENTS (FREQUENCY BAND, BANDWIDTH, SERVICES, NOTES)	ADDITIONAL NOTES
---	--	--	------------------

456-459 MHz FIXED MOBILE S5.271, 287, 288	456.000-457.575 MHz (1.575 MHz) MOBILE Fixed S5.271, 287, LT2.13, LT2.17, LT2.18, LT2.27, LT2.28		EU108 ERC/DEC/(96)04 T/R 22-05, T/R 32-02 T/R 25-08 ML, 466.000-469.000 MHz duplex, channel separation: 12.5 kHz, 25 kHz
	457.575-459.000 MHz (1.425 MHz) MOBILE Fixed S5.271, 287, LT2.13, LT2.17, LT2.18, LT2.27, LT2.28		
459-460 MHz FIXED MOBILE S5.271, 286B	459.000-460.000 MHz (1.000 MHz) MOBILE Fixed S5.286B, LT2.13, LT2.17, LT2.18, LT2.27, LT2.28		EU108 ERC/DEC/(96)04 T/R 22-05, T/R 25-08 ML, 469.000-470.000 MHz duplex, channel separation: 12.5 kHz, 25 kHz
460-470 MHz FIXED MOBILE Meteorological-Satellite (↓) S5.287, 288, 289, 290	460.000-463.000 MHz (3.000 MHz) MOBILE Fixed S5.287, 289, LT2.13, LT2.17, LT2.18, LT2.27, LT2.28		EU108 ERC/DEC/(96)04 T/R 22-01, T/R 22-05, T/R 32-02 T/R 25-08 FB, 450.000-460.000 MHz duplex, channel separation: 12.5 kHz, 25 kHz
	463.000-467.575 MHz (4.575 MHz) MOBILE Fixed S5.287, 289, LT2.13, LT2.17, LT2.18, LT2.27, LT2.28		

USED ACCORDING TO RADIO REGULATIONS (FREQUENCY BAND, SERVICES, NOTES)	USED IN LITHUANIA (FREQUENCY BAND, BANDWIDTH, SERVICES, NOTES)	USED IN LITHUANIA FOR GOVERNMENT REQUIREMENTS (FREQUENCY BAND, BANDWIDTH, SERVICES, NOTES)	ADDITIONAL NOTES
460-470 MHz FIXED MOBILE Meteorological-Satellite (↓) S5.287, 288, 289, 290	467.575-470.000 MHz (2.425 MHz) MOBILE Fixed S5.287, 289, LT2.13, LT2.17, LT2.18, LT2.27, LT2.28		
470-790 MHz BROADCASTING S5.149, 294, 296, 300, 302, 304, 306, 311, 312	470.000-608.000 MHz (138.000 MHz) BROADCASTING Mobile S5.149, 306, 311, 312, LT2.23, LT2.29, LT2.30		
	608.000-614.000 MHz (6.000 MHz) BROADCASTING Radio Astronomy Mobile S5.149, 306, 311, 312, LT2.23, LT2.29, LT2.30		
	614.000-790.000 MHz (176.000 MHz) BROADCASTING Mobile S5.149, 306, 311, 312, LT2.23, LT2.29, LT2.30		
790-862 MHz FIXED BROADCASTING S5.312, 313, 314, 315, 316, 319, 321	790.000-838.000 MHz (48.000 MHz) BROADCASTING Mobile S5.312, LT2.23, LT2.29, LT2.30		

USED ACCORDING TO RADIO REGULATIONS (FREQUENCY BAND, SERVICES, NOTES)	USED IN LITHUANIA (FREQUENCY BAND, BANDWIDTH, SERVICES, NOTES)	USED IN LITHUANIA FOR GOVERNMENT REQUIREMENTS (FREQUENCY BAND, BANDWIDTH, SERVICES, NOTES)	ADDITIONAL NOTES
---	--	--	------------------

<p>790-862 MHz</p> <p>FIXED BROADCASTING</p> <p>S5.312, 313, 314, 315, 316, 319, 321</p>	<p>838.000-862.000 MHz (24.000 MHz)</p> <p>BROADCASTING Mobile</p> <p>S5.312, LT2.23, LT2.29, LT2.30, LT2.31</p>		
<p>862-890 MHz</p> <p>FIXED MOBILE except aeronautical mobile BROADCASTING S5.322</p> <p>S5.319, 323</p>	<p>862.000-864.000 MHz (2.000 MHz)</p> <p>MOBILE</p> <p>S5.323, LT2.32, LT2.33, LT2.34</p>		<p>ERC/DEC/(97)DD ERC/REC 70-03 T/R 22-05, T/R 75-02</p> <p>Simplex, channel separation: 12.5 kHz, 25 kHz, CT2 - 100 kHz</p>
	<p>864.000-868.000 MHz (4.000 MHz)</p> <p>MOBILE</p> <p>S5.323, LT2.32, LT2.33, LT2.34</p>		
	<p>868.000-870.000 MHz (2.000 MHz)</p> <p>MOBILE</p> <p>S5.323, LT2.32, LT2.33, LT2.34</p>		
	<p>870.000-876.000 MHz (6.000 MHz)</p> <p>MOBILE</p> <p>S5.323, LT2.27, LT2.34</p>		<p>ERC/DEC/(96)04 T/R 22-05, T/R 75-02</p> <p>ML, 915.000-921.000 MHz duplex, channel separation: 12.5 kHz, 25 kHz</p>
	<p>876.000-880.000 MHz (4.000 MHz)</p> <p>MOBILE</p> <p>S5.323, LT2.34, LT2.35</p>		<p>T/R 25-09, T/R 75-02</p> <p>ML, 921.000-925.000 MHz duplex, channel separation: 12.5 kHz, 25 kHz</p>

USED ACCORDING TO RADIO REGULATIONS (FREQUENCY BAND, SERVICES, NOTES)	USED IN LITHUANIA (FREQUENCY BAND, BANDWIDTH, SERVICES, NOTES)	USED IN LITHUANIA FOR GOVERNMENT REQUIREMENTS (FREQUENCY BAND, BANDWIDTH, SERVICES, NOTES)	ADDITIONAL NOTES
<p>862-890 MHz</p> <p>FIXED MOBILE except aeronautical mobile BROADCASTING S5.322</p> <p>S5.319, 323</p>	<p>880.000-885.000 MHz (5.000 MHz)</p> <p>MOBILE</p> <p>S5.323, LT2.36</p>		<p>ERC/DEC/(97)02 T/R 75-02</p> <p>ML, 925.000-935.000 MHz duplex, channel separation: 12.5 kHz, 25 kHz, EGSM - 200 kHz</p>
	<p>885.000-887.000 MHz (2.000 MHz)</p> <p>MOBILE</p> <p>S5.323, LT2.36</p>		
	<p>887.000-890.000 MHz (3.000 MHz)</p> <p>MOBILE</p> <p>S5.323, LT2.36</p>		
<p>890-942 MHz</p> <p>FIXED MOBILE except aeronautical mobile BROADCASTING S5.322 Radiolocation</p> <p>S5.323</p>	<p>890.000-914.000 MHz (24.000 MHz)</p> <p>MOBILE Radiolocation</p> <p>S5.323, LT2.36, LT2.37</p>		<p>EU112</p> <p>ERC/DEC/(94)01 T/R 75-02</p> <p>ML, 935.000-960.000 MHz duplex, channel separation: 12.5 kHz, 25 kHz, GSM - 200 kHz</p>
	<p>914.000-915.000 MHz (1.000 MHz)</p> <p>MOBILE Radiolocation</p> <p>S5.323, LT2.36, LT2.37</p>		
	<p>915.000-921.000 MHz (6.000 MHz)</p> <p>MOBILE Radiolocation</p> <p>S5.323, LT2.27, LT2.37</p>		<p>EU112</p> <p>ERC/DEC/(96)04 T/R 22-05, T/R 75-02 FB, 870.000-876.000 MHz duplex, channel separation: 12.5 kHz, 25 kHz</p>

USED ACCORDING TO RADIO REGULATIONS (FREQUENCY BAND, SERVICES, NOTES)	USED IN LITHUANIA (FREQUENCY BAND, BANDWIDTH, SERVICES, NOTES)	USED IN LITHUANIA FOR GOVERNMENT REQUIREMENTS (FREQUENCY BAND, BANDWIDTH, SERVICES, NOTES)	ADDITIONAL NOTES
---	--	--	------------------

890-942 MHz FIXED MOBILE except aeronautical mobile BROADCASTING S5.322 Radiolocation S5.323	921.000-925.000 MHz (4.000 MHz) MOBILE Radiolocation S5.323, LT2.35, LT2.37		EU112 T/R 25-09, T/R 75-02 FB, 876.000-880.000 MHz duplex, channel separation: 12.5 kHz, 25 kHz
	925.000-930.000 MHz (5.000 MHz) MOBILE Radiolocation S5.323, LT2.36, LT2.37		EU112 ERC/DEC/(97)02 T/R 75-02 FB, 880.000-890.000 MHz duplex, channel separation: 12.5 kHz, 25 kHz EGSM - 200 kHz
	930.000-932.000 MHz (2.000 MHz) MOBILE Radiolocation S5.323, LT2.36, LT2.37		
	932.000-935.000 MHz (3.000 MHz) MOBILE Radiolocation S5.323, LT2.36, LT2.37		
	935.000-942.000 MHz (7.000 MHz) MOBILE Radiolocation S5.323, LT2.36, LT2.37		EU112 ERC/DEC/(94)01 T/R 75-02 FB, 890.000-897.000 MHz duplex, channel separation: 12.5 kHz, 25 kHz, GSM - 200 kHz

USED ACCORDING TO RADIO REGULATIONS (FREQUENCY BAND, SERVICES, NOTES)	USED IN LITHUANIA (FREQUENCY BAND, BANDWIDTH, SERVICES, NOTES)	USED IN LITHUANIA FOR GOVERNMENT REQUIREMENTS (FREQUENCY BAND, BANDWIDTH, SERVICES, NOTES)	ADDITIONAL NOTES
942-960 MHz FIXED MOBILE except aeronautical mobile BROADCASTING <u>S5.322</u> S5.323	942.000-959.000 MHz (17.000 MHz) MOBILE S5.323, LT2.36, LT2.37		EU112 ERC/DEC/(94)01 T/R 75-02 FB, 897.000-915.000 MHz duplex, channel separation: 12.5 kHz, 25 kHz, GSM - 200 kHz
	959.000-960.000 MHz (1.000 MHz) MOBILE S5.323, LT2.36, LT2.37		
960-1215 MHz AERONAUTICAL RADIONAVIGATION S5.328	960.0-1215.0 MHz (255 MHz) AERONAUTICAL RADIONAVIGATION <u>S5.328</u>		Aircraft flight safety, navigation and information systems (DME, TACAN, SSR, JTIDS)
1215-1240 MHz RADIOLOCATION RADIONAVIGATION-SATELLITE (↓) <u>S5.329</u> S5.330, 331, 333	1215.0-1240.0 MHz (25 MHz) RADIOLOCATION RADIONAVIGATION-SATELLITE (↓) <u>S5.329</u> <u>S5.333</u>		Radars GPS satellites
1240-1260 MHz RADIOLOCATION RADIONAVIGATION-SATELLITE (↓) <u>S5.329</u> Amateur S5.330, 331, 333, 334	1240.0-1260.0 MHz (20 MHz) RADIOLOCATION RADIONAVIGATION-SATELLITE (↓) <u>S5.329</u> Amateur <u>S5.333</u>		EU10 Radars GLONASS satellites (in accordance with the plan of WARC-92)
1260-1300 MHz RADIOLOCATION Amateur S5.282, 330, 331, 333, 334	1260.0-1300.0 MHz (40 MHz) RADIOLOCATION Amateur <u>S5.282, 333</u>		Radars

FOOTNOTES TO THE NATIONAL TABLE OF RADIO FREQUENCY ALLOCATIONS

- LT2.1** The frequencies 30.100, 30.300, 30.500, 30.700, 30.900, 31.450, 31.650, 31.850, 33.100, 33.300, 33.500, 33.700, 33.900, 34.100, 34.200, 34.400, 34.600, 34.800, 36.700, 36.900, 37.100 MHz may be assigned on a secondary basis to radio microphones (ERP \leq 1 mW), complying with the requirements of CEPT T/R 01-06 or the Recommendation, replacing it, on condition that they do not cause interference to radio stations (receivers) operating on a primary basis, or claim protection from interference from radio stations operating on a primary basis and from other low power devices.
- LT2.2** The frequencies may be assigned only to low power devices (radio microphones) of the mobile service on a secondary basis.
- LT2.3** The frequencies in the bands 31.000 - 31.350 MHz / 39.900 - 40.250 MHz may be assigned to CT0d radio telephones on a primary basis.
- LT2.4** The frequencies in the band 34.990 - 35.225 MHz may be assigned on a primary basis to aircraft model control devices, complying with the requirements of Recommendation ERC/REC 70-03.
- LT2.5** Though at present there are no stations of radio astronomy service in Lithuania as yet, but when assigning the frequencies in the bands 37.500 - 38.250 MHz, 73.000 - 74.600 MHz, 79.750 - 80.250 MHz, 150.050 - 153.000 MHz, 322.000 - 328.600 MHz, 406.100 - 410.000 MHz, 608.000 - 614.000 MHz to stations, it is necessary to make every effort to avoid possible interference to radio astronomy.
- LT2.6** The frequencies in the bands 6765 - 6795 kHz, 13553 - 13567 kHz, 26957 - 27283 kHz, 40.660 - 40.700 MHz, 433.050 - 434.790 MHz, 2400 - 2500 MHz, 5725 - 5875 MHz, 24.00 - 24.25 GHz, 61.00 - 61.50 GHz, 122 - 123 GHz and 244 - 246 GHz are also designated for the introduction of HF generators, used for industrial, medical and scientific purposes. There is a possibility of interference, caused by the HF generators to radio communications systems, operating within these bands.
- LT2.7** The frequencies in the band 40.660 - 40.700 MHz may be assigned on a secondary basis to short range devices complying with the requirements of Recommendation ERC/REC 70-03, on condition that they do not cause interference to stations, operating on a primary basis or claim protection against interference, caused by stations, operating on a primary basis and by other low power devices.
- LT2.8** The frequencies in the band 433.050 - 434.790 MHz may be assigned on a secondary basis to short range devices, complying with the requirements of Recommendation ERC/REC 70-03, on condition that they do not cause interference to radio stations, operating on a primary basis, or claim protection from interference from radio stations, operating on a primary basis and from other low power devices.
- LT2.9** The frequencies in the band 40.700 - 40.990 MHz may be assigned on a secondary basis to control devices of models, toys on condition that they do not claim protection from interference from stations, operating on a primary basis and from other low power devices, complying with the requirements of Recommendation ERC/REC 70-03.
- LT2.10** The frequencies in the bands 48.500 - 56.5.500 MHz (R-1 channel), 58.000 -

Lithuania

66.000 MHz (R-2 channel), 76.000 - 100.000 MHz (R-3, R-4, R-5 channels) shall not be assigned to new TV broadcasting stations. After the operation period of existing TV stations expires, these bands, with the exception of the band 87.500 - 100.000 MHz, will be allocated to the land mobile service on a primary basis.

- LT2.11** The frequencies in the band 66.000 - 74.000 MHz shall not be assigned to new broadcasting (FM) stations. After the operation period of existing broadcasting (FM) stations expires, this band will be allocated to the land mobile service on a primary basis.
- LT2.12** The frequencies in the band 87.500 - 100.000 MHz, 100.000 - 108.000 MHz may be assigned to broadcasting (FM) stations, subject to the provisions of the Agreement of Regional Administrative Radio Conference for the planning of the VHF Sound Broadcasting (Region 1 and part of Region 3), Geneva 1984.
- LT2.13** The frequencies in the band 110.000 - 174.000 MHz, 230.000 - 470.000 MHz may be used in cable networks, on condition that they do not cause interference to the work of radio communications systems, or claim protection against interference of radio communications systems.
- LT2.14** When assigning frequencies to stations of the aeronautical service, there should be a gradual transition to the use of stations, having 8.33 kHz channel separation.
- LT2.15** The frequencies 121.5 MHz and 156.8 MHz may be used only under the conditions, defined in Radio Regulations.
- LT2.16** The mobile service in this band is limited to the requirements of the aeronautical mobile service (OR), including air sport.
- LT2.17** When assigning frequencies to the mobile service stations, the provisions of Recommendation T/R 25-08 shall be observed. In private mobile radio (PMR) communications networks the radiated power of radio stations used shall not exceed 25 W.
- LT2.18** Radio frequencies may be assigned only to the systems of the fixed service stations, using radio channels each of a bandwidth not exceeding that designated for stations of the mobile service, subject to LT2.17 provisions. The power of the transmitters of radio stations, gain of the antennas used shall not exceed the power, necessary to maintain the radiocommunication. Nondirectional antennas shall not be used, unless necessary.
- LT2.19** The frequencies may be assigned to stations of the land mobile and fixed service, on condition that the bandwidth of the radio channel does not exceed the one designated for stations of the mobile service. When assigning the frequencies, LT2.17 and LT2.18 provisions shall be observed. Such assignment is impossible, if attempts to avoid interference to stations of the maritime mobile service end in failure.
- LT2.20** The frequencies may be assigned to stations of ERMES system, complying with the provisions of Decision CEPT/ERC/DEC(94)02.
- LT2.21** The band 314.5 - 315.5 MHz may be allocated to short range telemetry and data transmission equipment (sensors of safety, fire prevention systems, car locks, etc.) on a secondary basis.

Lithuania

- LT2.22** The band is reserved for the introduction of digital broadcasting (T-DAB) according to the final act of T-DAB planning session of CEPT members (Wiesbaden, 1995). The band may be used for other requirements than those of the broadcasting service only on a secondary basis.
- LT2.23** Radio frequencies may be assigned to radio microphones of varying frequency on a secondary basis.
- LT2.24** When assigning frequencies to new radiocommunications networks in the band 146-174 MHz, the spacing of duplex and simplex channels, used in Recommendation T/R 25-08 is to be applied. The frequencies of the old network are to be changed and the frequencies of the band to be re-allocated in the year 2001.
- LT2.25** The frequency 243.000 MHz, as well as the band 406.000 - 406.100 MHz may be used only under the conditions defined in Radio Regulations.
- LT2.26** The frequencies may be assigned to TETRA emergency system stations under the conditions specified in Decision ERC/DEC/(96)01 and Recommendations T/R 02-02, T/R 22-05.
- LT2.27** The frequencies may be assigned to TETRA system stations under the conditions specified in Decision ERC/DEC/(96)04 and Recommendations T/R 22-05 05.
- LT2.28** The frequencies may be assigned to NMT-450 system stations.
- LT2.29** In the band 470.000 - 862.000 MHz, priority shall be given to the introduction of digital television (DVB-T) systems.
- LT2.30** The frequencies may be assigned to Service Ancillary to Broadcasting (SAB) systems on a secondary basis.
- LT2.31** This band is used by the mobile service exclusively for tactical radio relay links on a secondary basis.
- LT2.32** The frequencies may be assigned to CT-2 radio telephones (systems).
- LT2.33** The frequencies may be assigned to short range radio devices, subject to the provisions of Decision ERC/DEC/(97)06 and Recommendation ERC/REC 70-03.
- LT2.34** The frequencies shall be assigned subject to the provisions of Recommendation T/R 75-02.
- LT2.35** The frequencies may be assigned to railway equipment (systems) in accordance with the provisions of Recommendation T/R 25-09.
- LT2.36** The frequencies in the band 890.000 - 914.000 MHz / 935.000 - 959.000 MHz may be assigned to stations of GSM system in accordance with the provisions of Decision ERC/DEC/(94)01. Additional frequency allocations may be made in the bands 880.000 - 890.000 MHz / 925.000 - 935.000 MHz subject to the provisions of Decision ERC/DEC/(97)02, while retaining the bands used by CT1+ radio telephones.
- LT2.37** Used for radiolocation in naval ships only.

Our organization

Introduction

State Radio Frequency Service (SRFS) is the executive part of the Radio Administration of Lithuania. It has the status of independent regulatory enterprise, founded and supervised by the Ministry of Transport. SRFS does not receive any governmental financing, but recovers its expenses from the fees for all kinds of Radio Station Licences. The wide range of SRFS responsibilities includes such as the direct involvement at all levels of sophisticated radio spectrum management; spectrum monitoring; telecom equipment testing and type approval; control over the importation, installation and operation of radio stations, and many others.

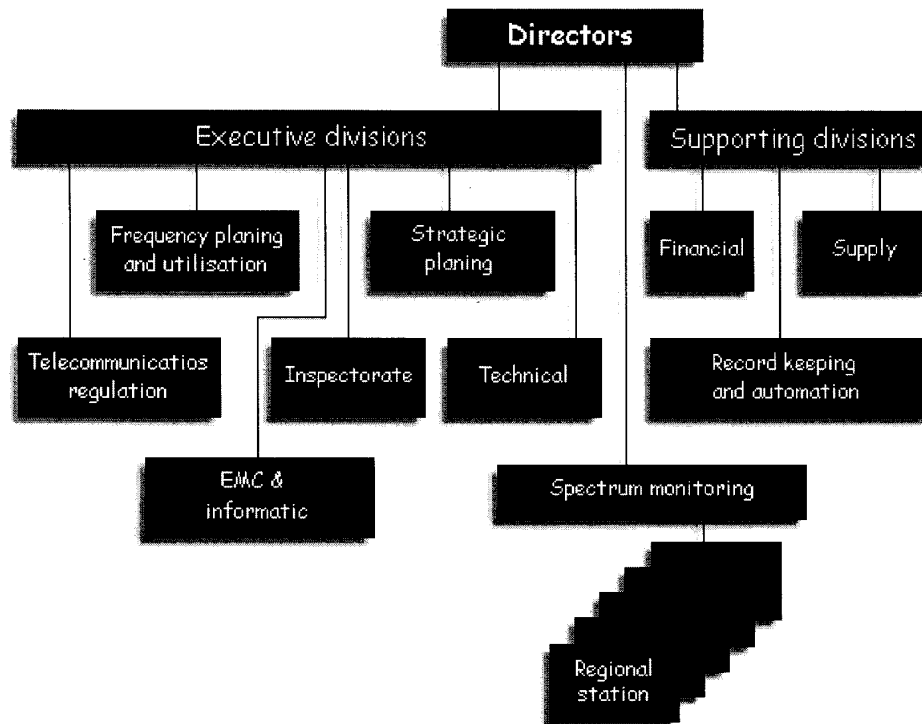
SRFS history

State Radio frequency Service was established back in 1992, when soon after the restoration of Lithuanian statehood, the need for such a body within the young Radio Administration became clear and urgent. At the very beginning, Service employed some 5 engineers, and they were concerned mainly with the frequency assignments for existing services. But the rapid growth of the radio communications in Lithuania, subsequently the thread of spectral congestion, new services (like Cellular Mobile, Satellite Communication Systems) entering the market - all that forced to look at the issue of spectrum management more seriously.

Following growth and our internal re-structuring, nowadays at SRFS work around 90 professionals, with location either at central office in Vilnius or one of our five regional centers in mayor cities. It can be seen, that our history in fact is very short. SRFS appeared on the scene of spectrum management very late indeed and, all the worst, started from zero. That is why we do ask you to be patient every time you call upon us, or just visit this our Web site. Keep in mind - it is only the beginning!

Structure of SRFS

The full structure of the State Radio Frequency Service is presented on the following chart.



Our location

The main office of the SRFS is located in Vilnius, on the Algirdo street 27, near the center of the town (within 5 minutes of walking distance from the Old Town), and the main transport facilities (10 minutes by car to Vilnius Airport, less than 5 minutes to the Railway and Bus stations).

Please be sure you always will be welcome at our office, either for serious negotiations or just for the introductory meeting.
