

ITU *in the Pacific* : *Strengthening Cooperation*

April 2010

ITU Regional Office for Asia and the Pacific

ITU Development Platform

DOHA ACTION PLAN (DAP) 2007-2010

ITU-D Development Programmes



Six Operational Programmes

Programme 1: Regulatory reform

Programme 2: Information and communication infrastructure and technology development

Programme 3: E-strategies and ICT applications

Programme 4: Economics & financing, including costs and tariffs

Programme 5: Human Capacity Building

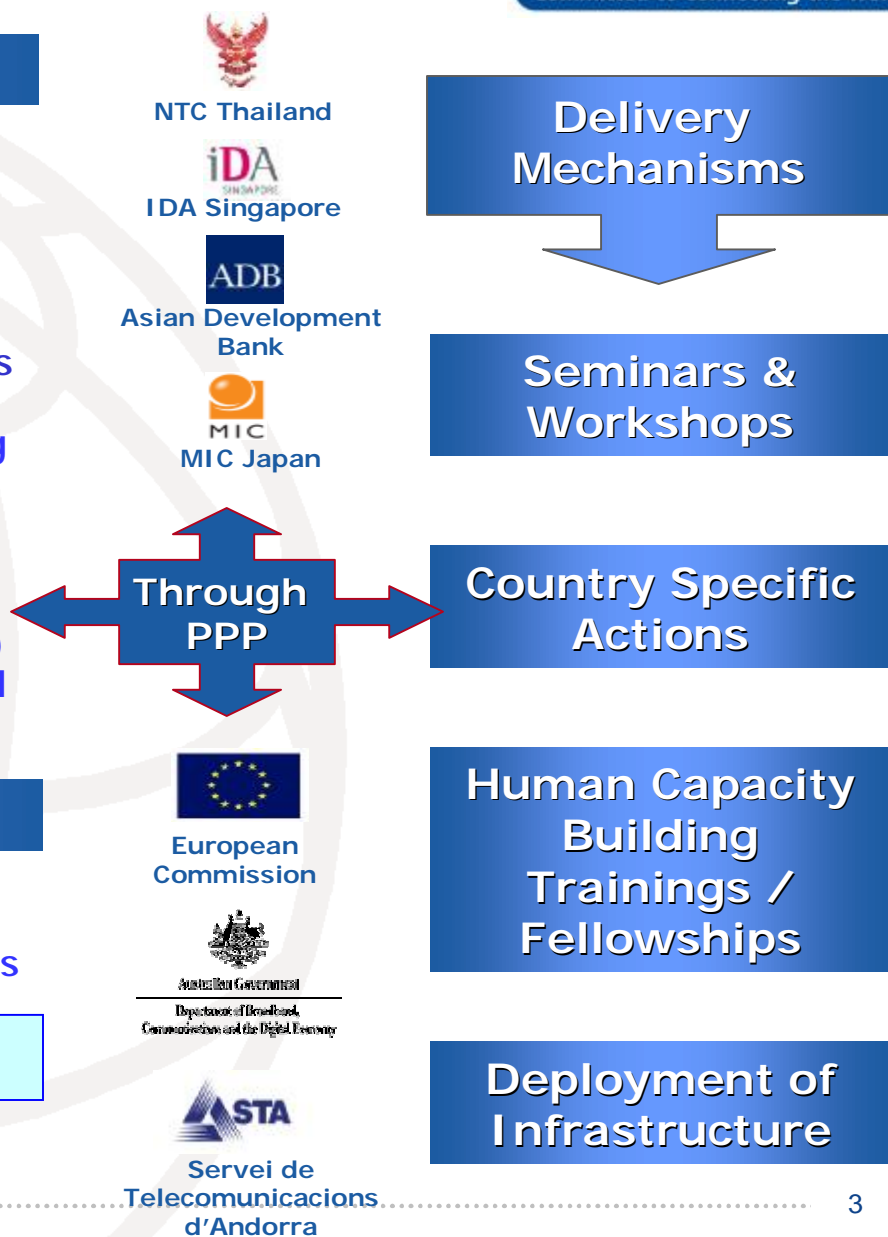
Programme 6: Least developed countries (LDC) and Small Islands Developing States (SIDS), and emergency telecommunications

Special Initiatives

Gender, Children and Youth, Indigenous people and communities, Persons with disabilities, Communities living in Remote/Underserved areas

5 Asia-Pacific Regional Initiatives

Various projects & actions



ITU Asia-Pacific Regional Initiatives (2007-2010)

ASP Regional Initiative 1

Telecommunication/ICT policy and regulatory cooperation in the Asia-Pacific region

ASP Regional Initiative 2

Rural Communications - Infrastructure development

ASP Regional Initiative 3

Next Generation Networks (NGN) planning

ASP Regional Initiative 4

The unique telecommunication/ICT needs of Pacific Islands and small island developing states (SIDS) in the Asia-Pacific region

ASP Regional Initiative 5

Strengthening the collaboration between ITU-T and ITU-D

Funding

*Doha Action Plan (DAP)
ITU-D Annual Operational Plan*

RI Linked Projects (RI & External Funds)

ICT Development Fund

Delivery Method

Seminars & Workshops

*Country Specific Actions
Human Capacity Building
Trainings / Fellowships*

Deployment of Infrastructure

Study Questions

Through
PPP

ITU - Country Specific Actions in 2010 - PACIFIC

Action	Beneficiary
Pacific Computer Emergency Response Team (CERT)	Pacific countries
Pacific Regional Resource Centre	Pacific countries
Rural Internet Connectivity Systems	Pacific countries
Conducive and Enabling ICT Legal Framework	Kiribati
Disaster Mitigation e.g. early warning system	Tonga
Assistance in Telecom/ICT Regulations	Solomon Islands
Universal Service Obligation	Tonga
Spectrum Management	Nepal, Tonga, Solomon Islands
Numbering Plan	Cambodia, Tonga, Solomon Islands

ITU - Country Specific Actions in 2010 - ASIA

Action	Beneficiary
Cybersecurity Legislation	Thailand
ICT Policy Roadmap for Persons with Disabilities	Thailand
Universal Service Obligation Policy Planning (2009-2011)	Thailand
Interconnection Framework, Cost Modelling, Tariff Policies	Bangladesh
National ICT Strategic Plan	Lao PDR
Establishment & Maintenance of ICT Indicators Database	Philippines
Pilot Project on Broadband over Power Line	Bhutan
Assistance on Establishment of TRA	Vietnam
IPTV Services	Nepal
Rural ICT Development Policy (2009-2010)	Asia-Pacific countries
NGN Planning and Migration	Sri Lanka, India, Mongolia
E-government Networks and Applications	Asia-Pacific countries
Broadband Infrastructure Master Plan	DPR Korea
Capacity Building in ICTs	Afghanistan, Maldives, Myanmar

ITU Event Calendar 2010

Key Events	Venue	Date
ITU Telecommunication Development Advisory Group (TDAG)	Geneva	24-26 Feb
2nd PacCERT Working Group Meeting	Suva, Fiji Islands	11-12 Feb
ITU-MIC Seminar: Wireless Broadband Networks for Asia-Pacific	Tokyo, Japan	23-25 Mar
ITU Council	Geneva	13-22 Apr
ITU-T SG 3 : Regional Seminar on Cost & Tariffs	Beijing, China	27-30 Apr
ITU-T SG 3 Meeting	R.O. Korea	17-21 May
ITU-AIBD Asia Media Summit	Beijing, China	25-26 May
ITU World Telecommunication Development Conference 2010	Hyderabad, India	24 May - 4 Jun
ITU-D/R WP5D on IMT Advanced (4G)	VietNam	[Jun]
ITU-ADB Regional Seminar on Rural ICT Development	[tbd]	[July]
ITU-ABBMN High-level Meeting	Maldives	[3-5 Aug]
ITU RDF: Spectrum Management & Digital Broadcasting	[tbd]	[19-30 Sep]
ITU Plenipotentiary Conference (PP-10)	Mexico	4-22 Oct
Global Symposium for Regulators (GSR)/GILF	[tbd]	[Nov]
ITU Global Forum on Human Capacity Development	R.O. Korea	[Nov/Dec]
ITU-ACMA International Training Program	Sydney, Australia	6-10 Dec

World Telecommunication Development Conferences

- § Serve as forums for free discussion by all concerned with the Development Sector. Results are reported and new projects are launched.
- § Set the agenda and the guidelines for the following four-year cycle, while the Regional Conferences review "work-in-progress" towards the overall objectives and ensure that goals are met.



World Telecommunication Development Conference 2010 (WTDC-10)

- § ITU Fifth WTDC will take place in Hyderabad, India from 24 May to 4 June 2010
- § Participants include government delegates, Ministers, Ambassadors and representatives from the private sector, as well as regional and international organizations

Please visit: <http://www.itu.int/ITU-D/conferences/wtdc/index.html>

Proposed ITU-D Operation Plan (2011 – 2014)



Proposals at the ITU Asia-Pacific Regional Meeting for WTDC-2010
At Kuala Lumpur, May 5-7 2009

Global Development Programmes

1. Information & Communication Infrastructure
2. Cybersecurity & ICT Applications
3. Enabling Environment
4. Capacity Building & Other Initiatives

Asia-Pacific Regional Initiatives

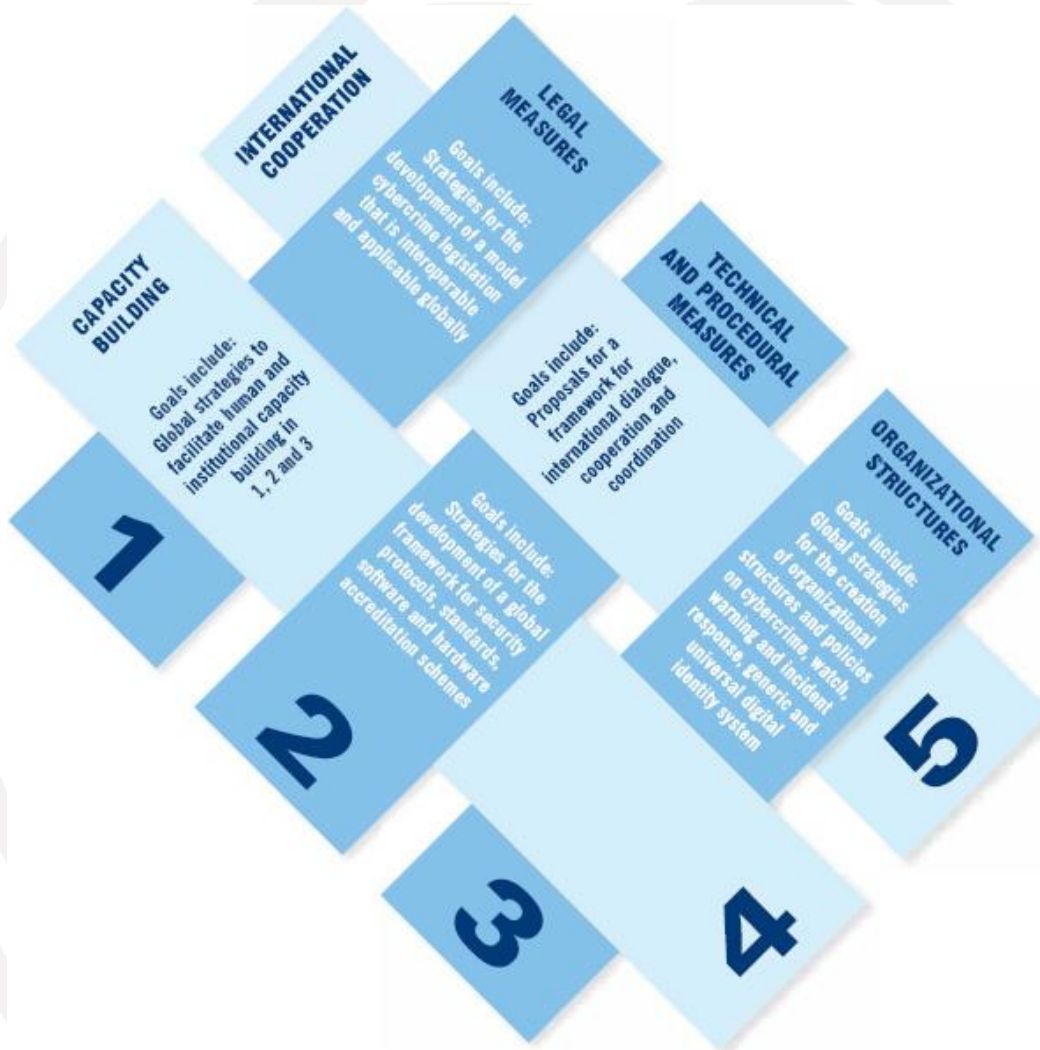
1. Unique ICT Needs of LDCs, SIDSs, & Landlocked Countries
2. Emergency Communication
3. Digital Broadcasting
4. Broadband Access & Adoption in Urban & Rural Areas
5. Telecom/ICT Policy & Regulation in Asia-Pacific Region

1. Cybersecurity & PacCERT

Global Cybersecurity Agenda (GCA)

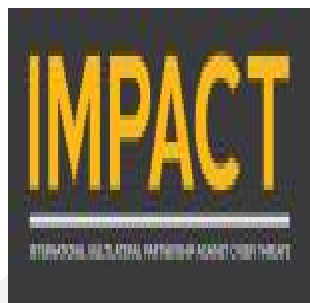
In line with WSIS C 5: Building confidence and security in the use of ICTs

Global Cybersecurity Agenda is an international framework for collaboration on cybersecurity matters addresses 5 main areas:



1. Legal Measures
2. Technical & Procedural Measures
3. Organizational Structure
4. Capacity Building
5. International Cooperation

ITU-IMPACT



- § Within GCA, ITU and the International Multilateral Partnership Against Cyber-Threats (IMPACT) are pioneering the deployment of solutions and services to address cyber-threats on a global scale.
- § IMPACT's global headquarters in Cyberjaya, Malaysia becomes the physical home of the GCA.

ITU-IMPACT Alliance Partners

Key intergovernmental organizations	Industry and academia	Leading cybersecurity training institutions
<ul style="list-style-type: none"> § United Nations § International Police Organization INTERPOL § Etc. 	<ul style="list-style-type: none"> § Symantec Corporation § Kaspersky Lab § F-Secure Corporation § Trend Micro Inc. § Microsoft Corporation § Cisco Systems Inc. § Dell Inc. § Etc. 	<ul style="list-style-type: none"> § The SANSTM Institute § International Council of E-Commerce Consultants (EC-Council) § The HoneyNet Project § (ISC)2 Inc.

IMPACT Membership

- § Being a member of IMPACT is easy and no costs
- § Respond to the ITU letter sent to all Member Administrations since last year
- § Provide information as required in the letter

Benefits

- § Access to Global Response Centre
 - ∅ NEWS (Network Early Warning System)
 - ∅ ESCAPE (Electronically Secure Collaboration Application Platform for Experts)
- § Training and Skills Development
- § Centre for Security Assurance and Research
- § Centre for Policy and International Cooperation

ITU Publications

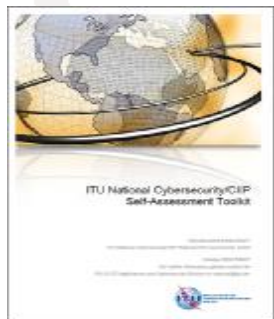


ITU Toolkit for Cybercrime Legislation

aims to provide countries with sample legislative language and reference material that can assist in the establishment of harmonized cybercrime laws and procedural rules.

www.itu.int/ITU-D/cyb/cybersecurity/legislation.html

ITU Publication on Understanding Cybercrime: A Guide for Developing Countries provides a comprehensive overview of the most relevant topics linked to the legal aspect of cybersecurity and cybercrime.



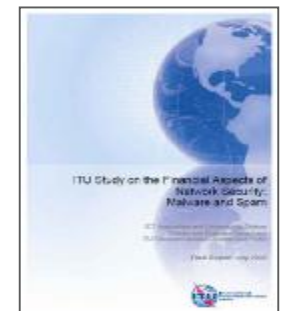
ITU National Cybersecurity/CIIIP Self-Assessment Tool

To assist governments in examining existing national policies, procedures, norms, institutions and other elements necessary for formulating cybersecurity strategies

www.itu.int/ITU-D/cyb/cybersecurity/readiness.html

ITU Study on the Financial Aspects of Network Security: Malware and Spam, 2008 The study develops a framework within which the financial impacts and implications can be assessed and brings together the many disparate sources of financial data on malware and spam.

www.itu.int/ITU-D/cyb/cybersecurity/spam.html



Pacific CERT (PacCERT)

- § In 2008, ITU in support of the Australian Government commissioned AusCERT to conduct a ***“Scoping Study for Possible Establishment of a Pacific CERT”***
- § In 2009 at the ***“Pacific ICT Ministerial Forum”*** convened by ITU and held in Tonga from 19 to 20 February 2009, an interim report of the study was presented to Ministers of Pacific Island Countries.
 - Ø The meeting noted and supported the effort towards establishment of the PacCERT
- § During the ***“APT Telecommunications ICT Policy & Regulatory Meeting for the Pacific”*** held in Fiji from 29 April to 1 May 2009, Forum officials endorsed setting up the PacCERT at the USP and established the PacCERT Working Group.
- § ITU in support of the Australian Government has organized 2 ***“PacCERT Working Group Meetings”***, both in Fiji Islands, November 2009 and February 2010 respectively.

Pacific CERT (PacCERT), cont'd



- § As an outcome of the first PacCERT Working Group Meeting, the WG called for ITU to develop a ***“Business Plan for Establishment of the PacCERT”***.
- § ITU commissioned AusCERT to develop the Business Plan and present an interim report at the 2nd PacCERT Working Group Meeting last month in Fiji.

So far, the Working Group has:

- Ø Confirmed accommodation for PacCERT at the Japan-Pacific ICT Centre at USP
- Ø Agreed in principle on the draft Business Plan which is being revised and improved
- Ø Adopted a Governance Model for PacCERT
- Ø Set up an Interim PacCERT Board with members from organizations as well as country representatives
- Ø Appointed an Interim Manager; and,
- Ø Secure commitments from Partners e.g. JICA, JPCERT/APCERT, IMPACT, PITA, SOPAC/SPC, PICISOC



2. Emergency/Disaster Communications

ITU Emergency Telecommunications

Events, Training, and Workshops

Production of Guidelines



ITU Framework for Cooperation in Emergencies (IFCE)

Eminent Industry Champion

Technology Cluster

- Satellite operators and Land Earth station operators
- Telecom Operators
- GIS/Remote sensing service providers
- Radiocommunications Equipment Providers

Eminent Corporate Champion

Finance Cluster

- Governments
- Private Sector
- Development Banks
- Regional Economic Groups

Eminent Corporate Champion

Logistics Cluster

- Air Transport operators
- International Couriers

ITU Emergency Resources

Satellite terminal: (Voice and data communication)

- Handheld satellite phones
- INMARSAT Global Area Network,
- Regional BGAN
- Nera World PRO (Explorer100/110)
- Thuraya DSL



Broadband mobile satellite terminals

Mobile Communication tools for Global Internet and data access at broadband speeds and simultaneous voice

Resource deployment

- *Equipment will be dispatched to a disaster-hit area immediately after request*
- *ITU bears costs of airtime and logistics*
- *ITU experts are ready to fly to the area and provide training of equipment*



Response Framework to Disasters



**When disaster strikes...
...telecommunications save lives**

Call our Emergency Telecommunications Team at +41 22 730 5222
Send an e-mail message to emergencytelecom-deployments@itu.int
Send a fax message to +41 22 730 5484

The International Telecommunication Union (ITU) and its partners deploy satellite terminals and other emergency telecommunication equipment to affected countries within the first 24 to 48 hours of a disaster to help restore vital communication links. The equipment is critical in:

- coordinating rescue and relief operations;
- setting up telemedicine links between hospitals and medics in the field;
- providing call centres where disaster victims can contact their loved ones.

ITU pays for the delivery of the equipment, and for its use. The calls are free. ITU also offers training.

More information is available at www.itu.int/itu-d/emergencytelecoms



Immediate Information/Action Needed from Disaster-Affected Administrations:

- Contact Emergency Telecommunication Team and/or ITU RO/AO.
- Indication as to number of satellite phones and/or other emergency telecom equipment needed to restore vital communication links
- Arrangements for customs clearance
- Designated Focal Point and contact details
- Exact Address where equipment will be delivered
- Advise ITU RO/AO designated focal point to call in times of emergency.

Asia-Pacific Regional Platform ?

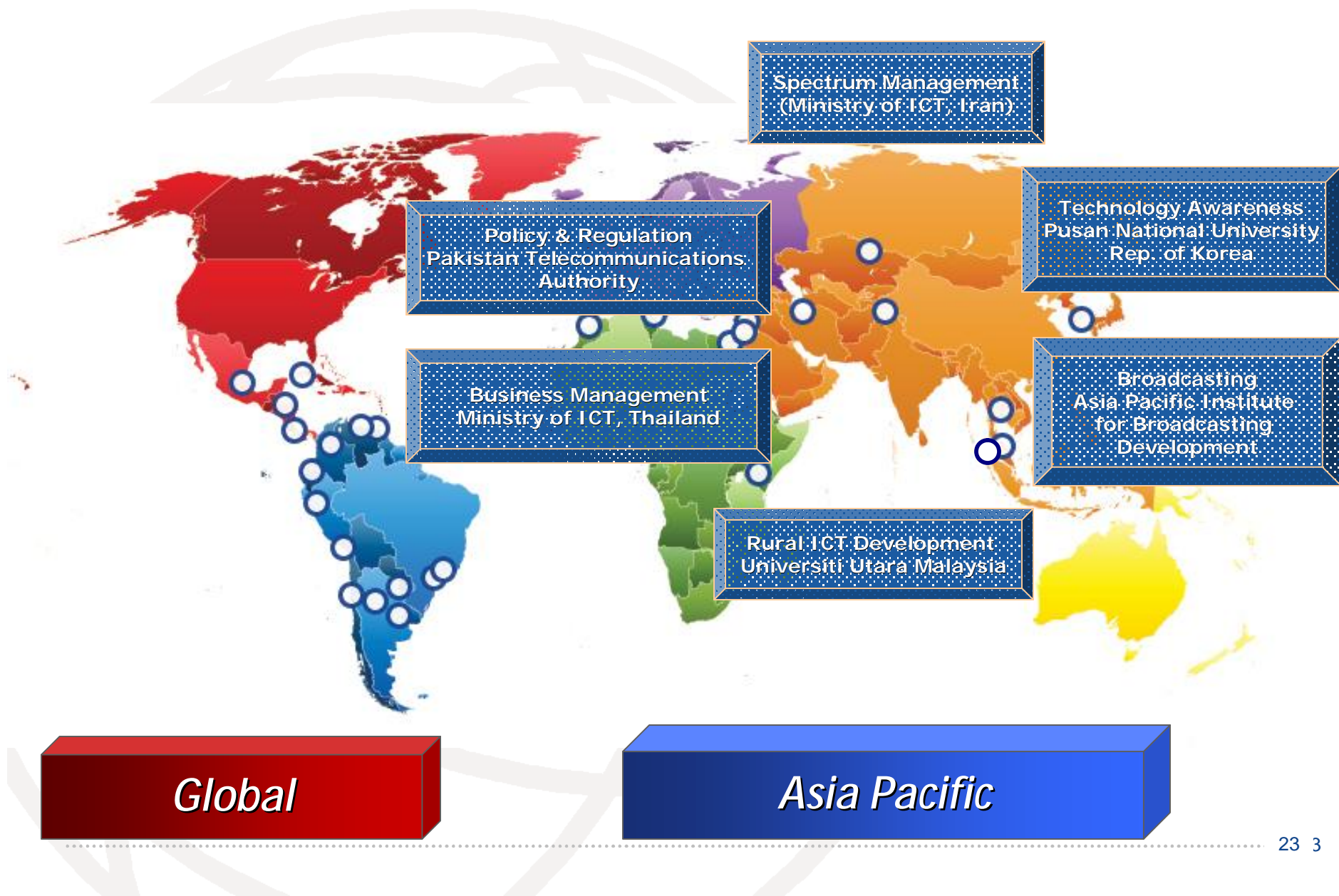


Regional Platform for Cooperation in Emergencies in the Asia-Pacific Region

- § Australian Government announced in the *3rd APT Preparatory Meeting for the WTDC-10 in Bangkok, March 2010* that it would provide approx USD 90,000 as a seed fund for this purpose
- § ITU Regional Office is in process of procuring equipment and establishing partnerships
- § ITU has planned to work with member administrations in development of a “National Emergency Telecommunications Plan”

3. ITU Human Capacity Building

ITU Centres of Excellence



ITU Asia Pacific Centres of Excellence: Training Courses in 2010

Training Course	Venue	Date
Improving rural development through Telecentres	Malaysia	26 - 28 Apr
New trends in spectrum management policies	Iran	tbd
WCDMA Network Planning and Optimisation	Rep. of Korea	11-14 May
3G Mobile Network Cost Modeling	Thailand	14 - 18 Jun
Infrastructure Sharing	Thailand	31 Aug -3 Sep
ITU/PITA CoE Competition Issues Workshop	Sydney	7-10 Sep
Strategic HR Management	Thailand	17-20 Aug
e-Applications and Services	Malaysia	20-24 Sep
International Mobile Roaming and Termination Rates	Thailand	5-8 Oct
4G Mobile (IMT Advanced) Systems and Applications	Rep. of Korea	1-5 Nov
Migrating to converged licenses	Malaysia	[Nov]
Securing ISP Networks and Services	IMPACT, Malaysia	[tbd]

ITU Asia Pacific Centres of Excellence: Online Training Courses in 2010

Online Training Course	Venue	Date
Universal Service Policies and Practices	ITU Academy Portal	15 Mar - 23 April
Radiocommunications for Emergency Services	ITU Academy Portal	19 Aug - 17 Sep
IT Governance	ITU Academy Portal	14 Jun - 23 July
Digital TV Broadcasting Technologies	ITU Academy Portal	4 Oct - 12 Nov
Interconnection Cost Modeling	ITU Academy Portal	tbd



Home News Courses Community My profile Calendar FAQs Contact us

Global Search

Search ITU Academy

Login

Username

Password

[Create new account](#)
[Lost password?](#)

Course categories

- Business and Management
- Policy and Regulation
- Technologies and Services
- Events

[All courses ...](#)

Tags



ITU Academy
empowering minds

<http://academy.itu.int>

June 2009: The ITU Academy portal is under development and subject to change without notice.

For further information, see this [overview presentation](#) or please contact the ITU Development Sector's Human Capacity Building Division at hcbmail@itu.int.

KEY EVENTS AND ACTIVITIES



ITU Regional Human Capacity Development Forum for the Asia Pacific

Dates: 14 - 16 December 2009

Place: Bandar Seri Begawan, Brunei Darussalam

Participation Fees: No participation fees/free

For more information click [here](#).



4. Rural Communications

PacRICS - ITU's Supports



Source: SPC

Marshall Islands

- Likiep Atoll (01/06/2009 – 01/06/2010)
- [Majuro] (1st year is not yet activated)

Papua New Guinea

- ID 2015 (31/03/2009 – 31/03/2010)
2nd year bandwidth procured
- ID 2016 (31/03/2009 – 31/03/2010)
- ID xxxx (1st year is not yet activated)
- ID xxxx (1st year is not yet activated)

Tonga

- Nomuka Island (01/06/2009 – 01/06/2010)
- [xxxx] (1st year is not yet activated)
- Site #3 (1st year has been procured)

Kiribati

- Site #1 (1st year has been procured)
- Site #2 (1st year has been procured)
- Site #3 (planned)
- Site #4 (planned)

What's next?

- § ITU continues support RICS setups
- § ITU will work in close collaboration with regional organisations and member administrations focusing on ICT services and applications particularly for local communities
- § ITU pursues partnerships in conducting training on ICT services and applications in the Pacific

5. Spectrum Issues

Current ITU's Efforts

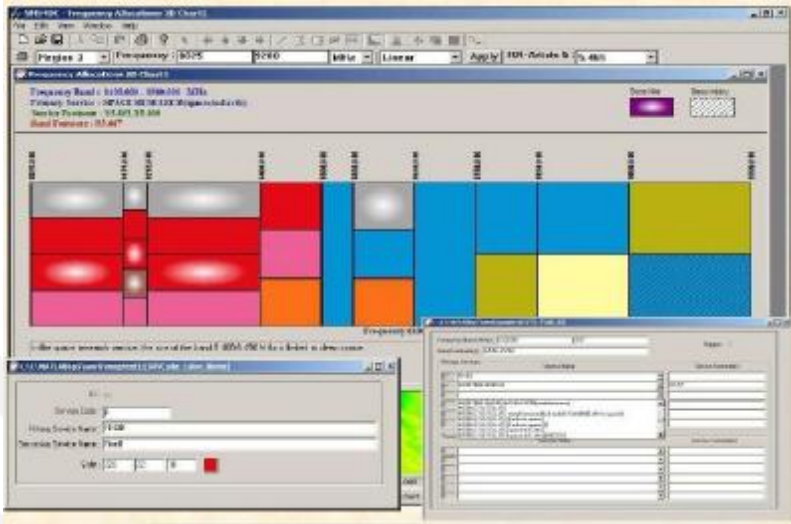


- § ITU expert assistance in Spectrum issues in Solomon Islands, Papua New Guinea, and Vanuatu
- § Planned assistance in Samoa
- § Planned assistance in Fiji
- § Pursue a possibility of regional / national training in SMS4DC

Spectrum Management System for Developing Countries (SMS4DC) is an integrated software package on CD-ROM, containing the software, a user manual and a digital terrain map of the world.

SMS4DC - History

- § ITU-R and ITU-D cooperation
- § 1995 BASMS (FoxPro)
- § 1997 WinBASMS
- § WTDC March 2002: further developments
- § 2002 ITU-R SG1: Rec. ITU-R SM.1604
- § Consolidated technical specification: 2004



- § 2007 first quarter: Version 1
- § 2008 first quarter: Version 2
- § 2009 third quarter: Version 3

SMS4DC Version 3 and next steps...



- § Uses Google Earth
- § Links to monitoring system
- § Frequency allocation table approved by WRC-07
- § Future developments will see radionavigation, maritime mobile

Annual licensing fee in Swiss francs:

Catalogue Price (software) annual licensing fee: CHF 4,410.– (for a single workstation)

Member State Administrations and Sector Members: –15%
 Administrations of the Least Developed Countries: –80%
 Libraries of educational institutions: –80%

Price for software installed on one single or multiple workstation(s)

Number of workstations*	1 <input type="checkbox"/>	2-3 <input type="checkbox"/>	4-5 <input type="checkbox"/>	6-10 <input type="checkbox"/>
Annual licensing fee (in Swiss francs)	4 410.–	6 615.–	7 497.–	8 820.–

* Please tick the appropriate box



For Your Information

Criteria Applicable for the Choice of Class Contribution (Council 2010 Doc. C10/67)

<i>Population of the Member State</i>	<i>Calculation of maximum GDP per capita, in USD (GDP threshold per capita for graduation used by the UN × multiplier)</i>	<i>Threshold (USD)</i>	<i>Member States</i>
1 000 000 or less	GDP threshold per capita for graduation used by the UN × 1	1,086	
900 000 or less	GDP threshold per capita for graduation used by the UN × 2	2,172	
800 000 or less	GDP threshold per capita for graduation used by the UN × 3	3,258	
700 000 or less	GDP threshold per capita for graduation used by the UN × 4	4,344	
600 000 or less	GDP threshold per capita for graduation used by the UN × 5	5,430	Solomon Islands
500 000 or less	GDP threshold per capita for graduation used by the UN × 6	6,516	
400 000 or less	GDP threshold per capita for graduation used by the UN × 7	7,602	
300 000 or less	GDP threshold per capita for graduation used by the UN × 8	8,688	
200 000 or less	GDP threshold per capita for graduation used by the UN × 9	9,774	Micronesia, Tonga
100 000 or less	GDP threshold per capita for graduation used by the UN × 10	10,860	Cook Islands, Palau, Niue, Marshall Islands, Nauru

1 contributory unit (1 unit) fixed at 318 000 CHF

- 1/16 unit = 19,875 CHF

- 1/8 unit = 39,750 CHF

ITU Plenipotentiary Conference 2010 (PP-10), Mexico

- § The Plenipotentiary Conference is the top policy-making body of the ITU, (held every four years), for a three week period from Monday, 4 October 2010 to Friday, 22 October 2010
- § Sets the Union's general policies
- § Adopts four-year strategic and financial plans and
- § Elects the senior management team of the organization, the members of Council and the members of the Radio Regulations Board.

The Plenipotentiary Conference is the key event at which ITU Member States decide on the future role of the organization, thereby determining the organization's ability to influence and affect the development of Information and Communication Technologies (ICTs) worldwide.

ITU Sector Members, Regional Telecommunication and Intergovernmental Organizations, and the United Nations and its specialized agencies also attend the Conference as observers.

Please visit: <http://www.itu.int/plenipotentiary/2010/index.html>

I
THANK
U



ITU : <http://www.itu.int>
ITU Asia Pacific : <http://www.itu.int/ITU-D/asp/CMS/index.asp>

