

# ***ITU SEMINAR (SLOVAKIA)***



## **EDI**

### **International Settlements**

### **Presentation by**

### ***Eddy Patient***

September 2001

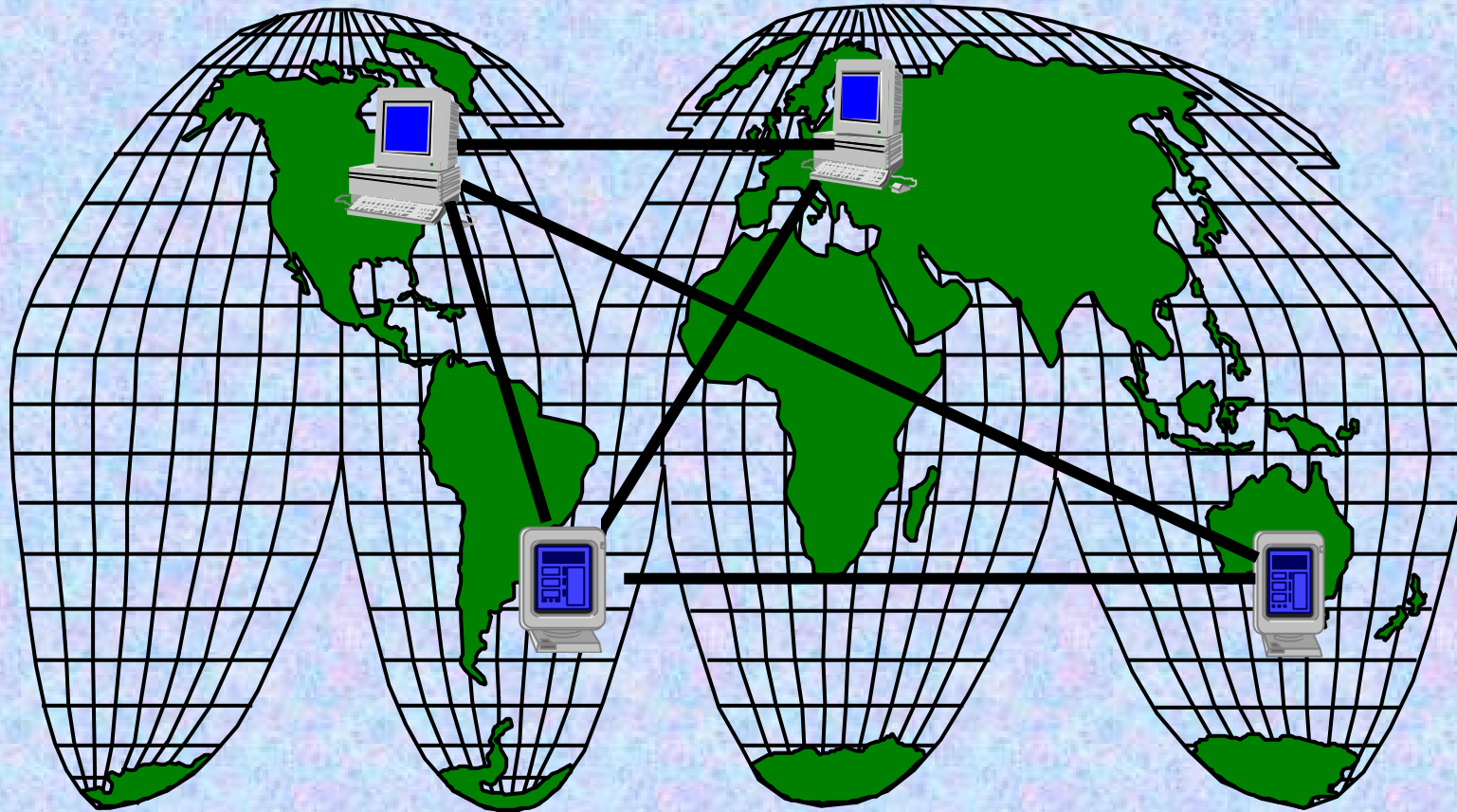
# **Contents**

- ***EDI & ETIS - Defined***
- ***Facts about the ETIS/EDI International Settlements Group***
- ***History of the EDI Group and D190 recommendation***
- ***EDI Group & Structure***
- ***EDI - Defined & how it works***
- ***EDI Global Members***

# **EDI**

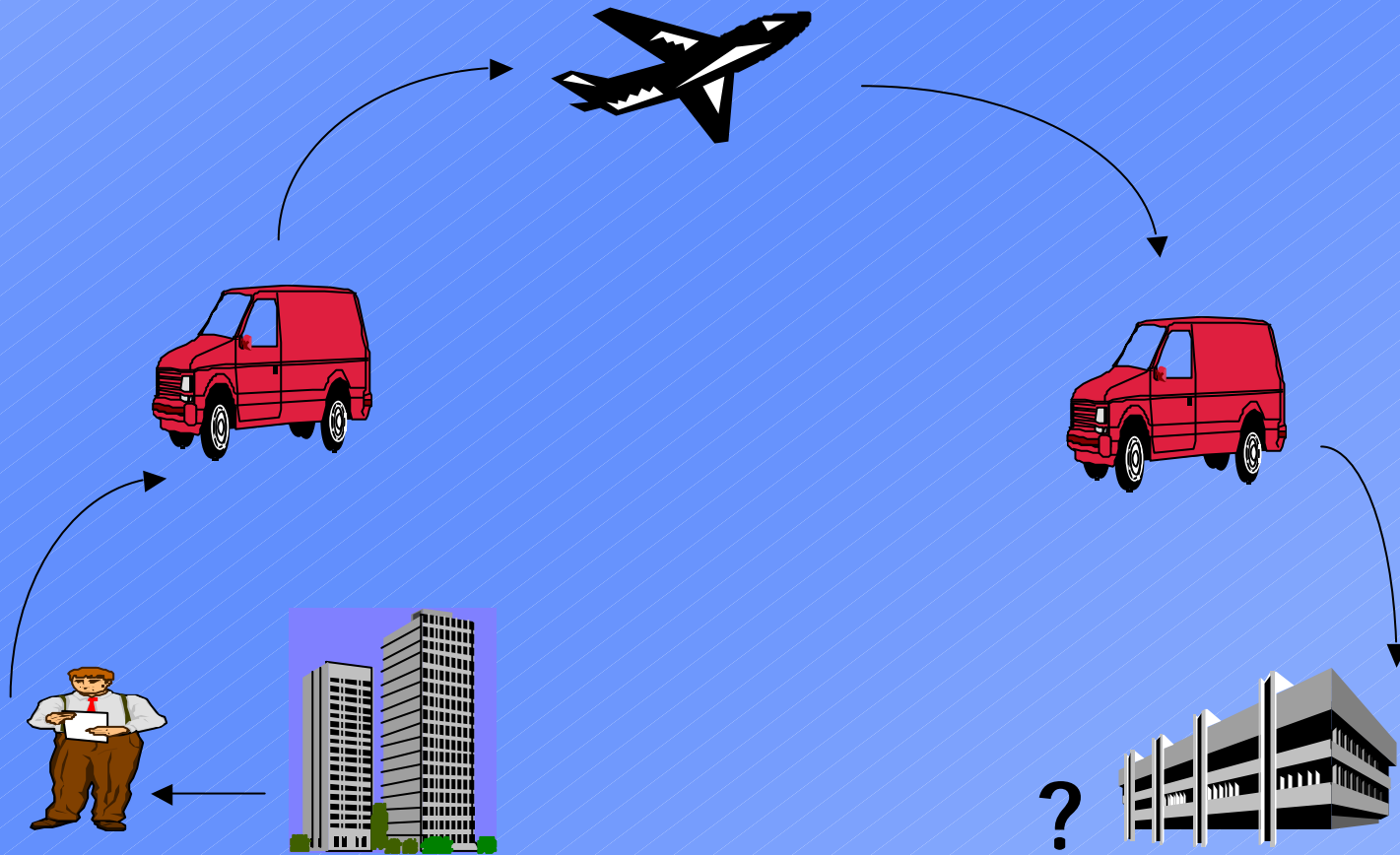
*Electronic Data Interchange*

**EDI/ELECTRONIC COMMERCE IS .....**



***DATA EXCHANGED ELECTRONICALLY BETWEEN  
COMPUTERS OVER A NETWORK***

# DATA EXCHANGE TODAY



# *Why EDI ?*

## ***Business BENEFITS***

- ◆ Demand from industry for E-Commerce
- ◆ Speed of transaction
- ◆ Accuracy of data
- ◆ Ease of processing
- ◆ Cost reduction on many levels
- ◆ Security



# ETIS

ETIS *e- and telecommunications information services* is the platform for the interchange of information, experiences and professional networking at the heart of the Telecommunications industry.

It is an industry led group, which brings together telecommunications operators, suppliers and content providers on key information and communication technology issues and facilitates co-operation among them.

# Facts about ETIS

- ETIS is a global organization and has its origins in Europe
- It's members consist of Telecom Operators
- ETIS is a non-profit making organization and relies on membership fees to cover costs
- In addition to many other activities ETIS has several working groups which focus on specific topics
- The International Settlements EDI forum is one such group
- ETIS facilitates, supports, coordinate and provides the neutral presence for this group



# Facts about EDI Group

- Members must be International Operators who are licensed to carry international traffic and enter into international agreements
- EDI group is a non-profit making group
- Relies on membership funding, members input and voluntary contribution from Operators
- EDI Group is considered a non-competitive group due to the nature of the topic and its objective
- Members are allowed to vote and influence decisions
- EDI member Carriers are 40+ ; Approx. 20 - 25 can exchange today

# **EDI GROUP OBJECTIVE**

To develop, define, test and implement EDI global links, standards & protocol for inter-operator exchange of traffic accounting data .

*according to*

**ITU D190 Recommendation**

(1995)

# Who should attend ?

- International Settlements representatives
- IT / Systems Development

90%

# Who has attended ?

- Managers, Directors from International Settlements
- Systems Developers/Analysts/Programmers from IT
- Sales / Product / Operations Support
- Network

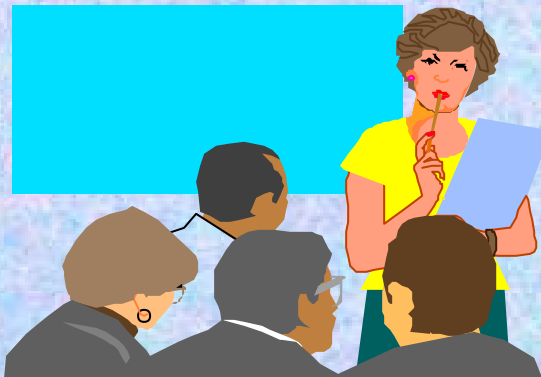
# ETIS/EDI INTERNATIONAL SETTLEMENTS

Membership is 3500 EURO per financial year (\$2.9k, 5.3k CHF, 2.4k SDR) for each Operator.

- Membership fund helps to cover :
  - 2 Main / 4 Council Meetings (preparatory work, organization...)
  - Maintenance of Code Tables & Documentation (incl. File Format)
  - Development & Maintenance (web site)
  - Administration (ETIS Central Office)
  - promotions / presentations
  - Education workshops & assistance

# EDI COUNCIL

- ◆ EDI COUNCIL ARE CONCERT, TELENOR , TELSTRA,
- ◆ EXTENDED COUNCIL MEMBERS ARE EMBRATEL
- ◆ ETIS DIRECTOR OF PROJECTS & TECHNOLOGY
- ◆ COUNCIL MEMBERS ARE VOLUNTEERS
- ◆ FOUR MEETINGS PER YEAR



- ◆ PERFORMS & REVIEWS DETAIL WORK FOR EDI IS GROUP
- ◆ PREPARES ALL MEETINGS, WORKSHOPS
- ◆ PROPOSES STANDARDS, POLICIES & RECOMMENDS
- ◆ PROMOTES EDI GROUP

# **EDI STANDARDS - ITU & ETIS RECOMMEND TWO FORMATS**

**EDIFACT** - VERSION DEVELOPED BY BT USING  
'UN' APPROVED GENERIC STANDARD & SYNTAX

**FLATFILE** - DEVELOPED & UPDATED BY EDI  
GROUP



**BOTH STANDARDS ARE ITU AND ETIS APPROVED**

(Recommendation D190 - 1995)

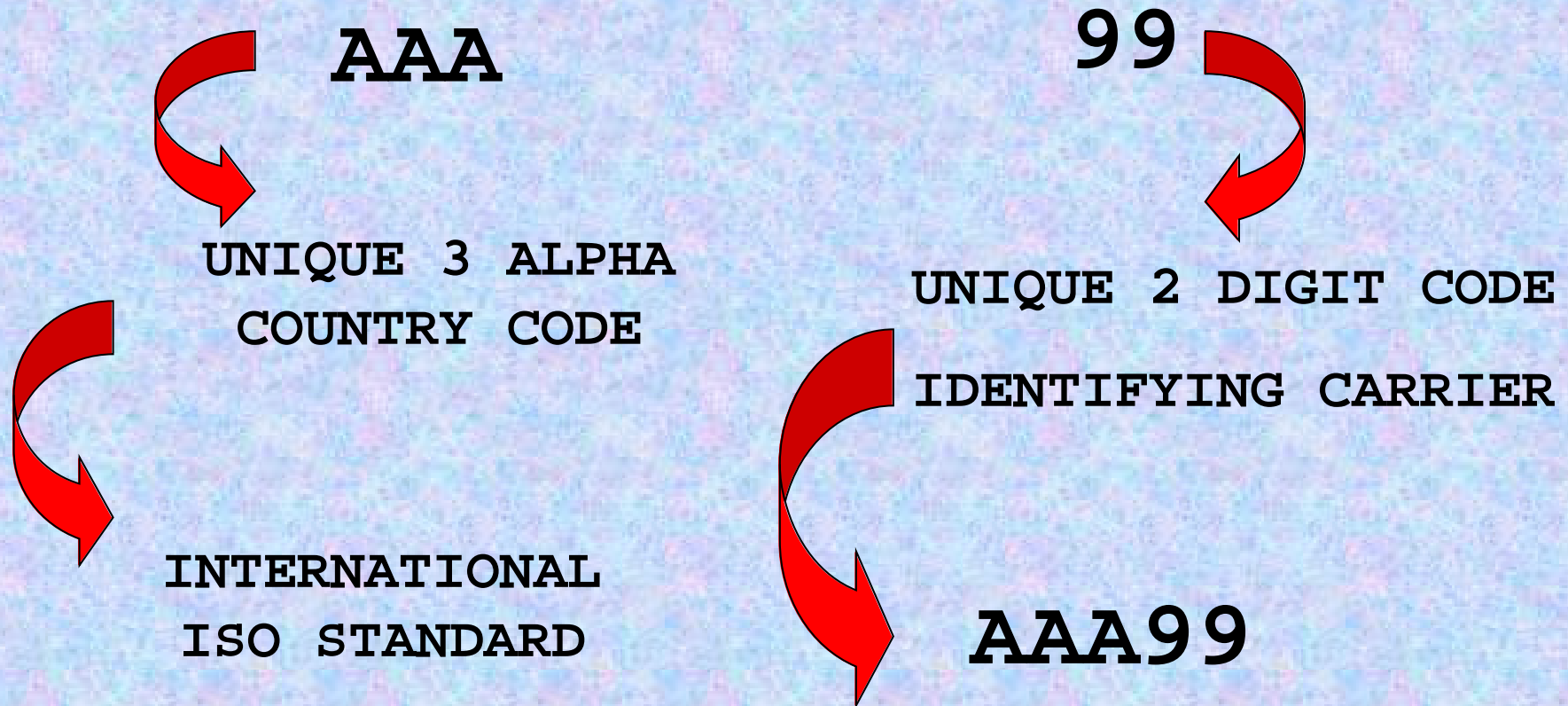
# **CODE FORMAT & CONVENTION**

## **4 Code Tables**

- ◆ **Carrier Code (International licensed Carrier)**
- ◆ **Service Type (telephone, Telex, IP)**
- ◆ **Traffic Type (IDD, Home Direct, Collect)**
- ◆ **Currency (USD, GF, SDR, EURO)**

# CODE FORMAT & CONVENTION

- Carrier Code = 5 CHARACTERS





# CODE FORMAT & CONVENTION

- Service Type Code = 2 CHARACTERS

UNIQUE ALPHA CODE

2 Position

Examples

TP = Telephone

TX = Telex

# CODE FORMAT & CONVENTION

- Traffic Type Code = 4 CHARACTERS

UNIQUE ALPHA/SYMBOL CODE

e.g. XX\_X

Examples

1st - Basic Traffic

IDD

2nd - Connection Procedure

Automatic/Operator

3rd - Remuneration Factor

Billing Method  
(e.g.credit card)

4th - Time Classification

e.g standard, peak

# CODE FORMAT & CONVENTION

- **Currency Code = 3 CHARACTERS**  
**UNIQUE 3 POSITION ALPHA CODES**

## Examples

1st - USD

US DOLLAR

2nd - GF

GOLD FRANC

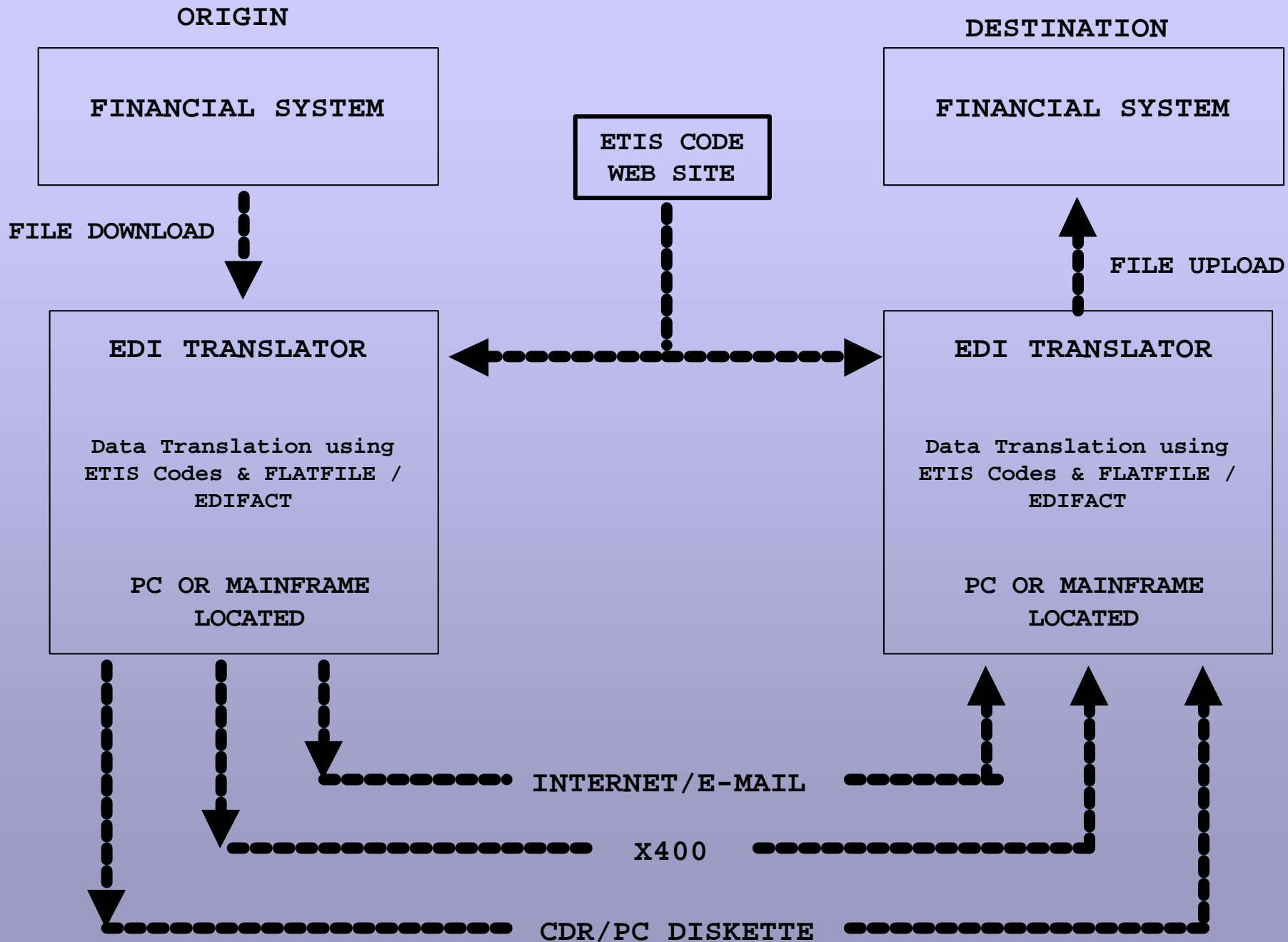
3rd - SDR

SPECIAL DRAWING RIGHTS

4th - EURO

EURO

# FILE FLOW PROCESS



# Why is there a need for an EDI Group ?

Since the original recommendation the Market has progressed

- to be more volatile
  - agreements have changed - more complex & unique
  - Operators have more than doubled
  - International Settlements activity has expanded to meet these demands
  - Effect on the data exchange is high
- 
- The EDI format must be adapted to meet the demands of the competitive market & needs of the Settlements community

# History of EDI Group

- 1992 - Potential of EDI discussed by Business & IT (system developers)
- 1992 - Group of European Carriers working within an ETIS EDI working Party to develop standards & protocol
- 1995 - ITU D190 Recommendation approved
- 1997 - EDI Code Review Panel formed to specifically focus on the revision of the code tables
- 1998 - Revised list of Codes released to members
- 1998 - EDI Council formed to become responsible for all the group deliverables

# History of EDI Group CONT'D

- 1998 - New version of Flatfile released by EDI Group
- 1999 - EDI Code Tables web site launched to members
- 1999 - Proposal to update existing D190 Recommendation  
approved
- 2000 - EDI Group agree to develop Translator for  
members
- 2001 - Number of Global Carriers reach 50 for EDI Group

## Europe & M/East

Israel - Bezeq  
France Telecom  
Telenor - Norway  
Tele Denmark  
Telekom Austria  
P&T Luxembourg  
Matav - Hungary  
Telefonica - Spain  
Telecom Italia  
Marconi - Portugal  
Deutsche Telekom  
Eircom - Ireland  
Telia - Sweden  
Sonera - Finland  
Slovenia Telecom  
Swisscom  
Slovakia

## Americas

Concert  
USA - SPRINT  
Mexico Telmex  
Colombia Orbitel  
Embratel - Brazil  
Ecuador  
Argentina North  
Argentina South  
Uruguay  
**West Indies Ltd**

## Africa

Telkom South Africa  
Mauritius

## Asia-Pac

Singapore Telecom  
Starhub Singapore  
Celcom Malaysia  
VSNL India  
Hong Kong Telecom  
China Telecom  
Telstra - Australia  
C&W Optus - Australia  
Telecom New Zealand  
PLDT  
Japan Telecom  
Sri Lanka

**EDI Global  
Members**



## West Indies Ltd (C&W)

Barbados  
St Vincent  
St Lucia  
Cayman Islands  
Bermuda  
Dominica  
British Virgin Islands  
St Kitts  
Anguilla  
Montserrat  
Grenada  
St Helena  
Falkland Islands  
Ascension Islands  
Turks and Caicos

**EDI Global  
Members**