
ITU-MIC Forum

Wireless Broadband Networks

MIC-BDT Activities/ Pilot Project on
Wireless Broadband

("PWB-Project")

23 March 2010

Ms. Junko KOIZUMI
Project Administrator
Projects and Initiatives Department
BDT, ITU



**International
Telecommunication
Union**

Committed to connecting the world

PWB-MIC/ITU Project

Objective: Through field pilot project, BWA business feasibility is jointly investigated at the location(s) in the beneficiary countries to encourage further extension of broadband coverage in developing countries, by deploying Wireless Broadband System up to 2 sites in each country.

The expected outputs:

- A pilot Wireless broadband system deployed/established in the identified areas up to 2 sites in the beneficiary country;
- An impact assessment for BWA service including its sustainability in rural and remote areas.



PWB-MIC/ITU Project

INPUTS: Ministry of Internal Affairs and Communications (MIC), Japan

- Cash Contribution
- In-kind Contribution;
 - Assistance in implementation of this pilot project
 - Securing expert(s) to carry out preparation, deployment, analysis and study for this pilot project.

Partners

- Supply and install the BWA infrastructure and/or radio approach link if required;
- Supply terminal equipment if new BWA system is applied.
- Supply and install additionally required site facilities
- In-kind Contribution:
 - Assistance in implementation of this pilot project, Securing expert(s) to carry out preparation, deployment, analysis and study for this pilot project.



PWB-MIC/ITU Project

Main activities: Based on the outputs of the feasibility study

- Procurement/shipments of required equipment to the project sites;
- Site preparation (if needed);
- Install pilot BWA infrastructure;
- Install radio link where required;
- Commission and Operation of this pilot system;
- Business Analysis and Study/impact assessment report



PWB-MIC/ITU Project

Main Roles and Responsibilities

ITU

- The ITU will act as the implementing agency and provide a staff, as a Project Manager, for overall project supervision, monitoring, and coordination;
- Recruit and supervise the experts;
- Correspond with the relevant parties;
- Provide advice and assistance to the project team, through the regional office, when it is required;
- Carry out activities in collaboration with beneficiary countries
- Cooperate with local authorities to install, commission and put into operation the planned BWA system.

MIC, Japan

- MIC will provide the assistance to the project team for Analysis and Study;
- Secure third party expert(s) contributed in kind,
- Consider further funding, which may be required in case of change in the Project
- Make a voluntary contribution



PWB-MIC/ITU Project

Main Roles and Responsibilities

Partner

- Provision of required equipment;
- Assistance to the project team for Analysis and Study;
- Secure third party expert(s) contributed in kind;
- Consider further funding, which may be required in case of change in the Project;
- Make a voluntary contribution (shipment etc.)
- Recommend a technical advisor to assist the ITU

Beneficiary Countries

- Designate a qualified national counterpart to work with the ITU, and operate and maintain the BWA system after deployment;
- Issue all permits required to carry out project activities;
- Exempt the project equipment from customs, duties, taxes and any other fees;
- Provide all regulatory requirements and network services from other operators/ISPs;
- Cooperation and assistance to the project team for field trial, user monitors, business analysis and study.



PWB-MIC/ITU Project

Candidate Target Sites

Identified by MIC/ITU Project "Feasibility Study on Wireless Broadband Infrastructure"

Jordan (2 sites)

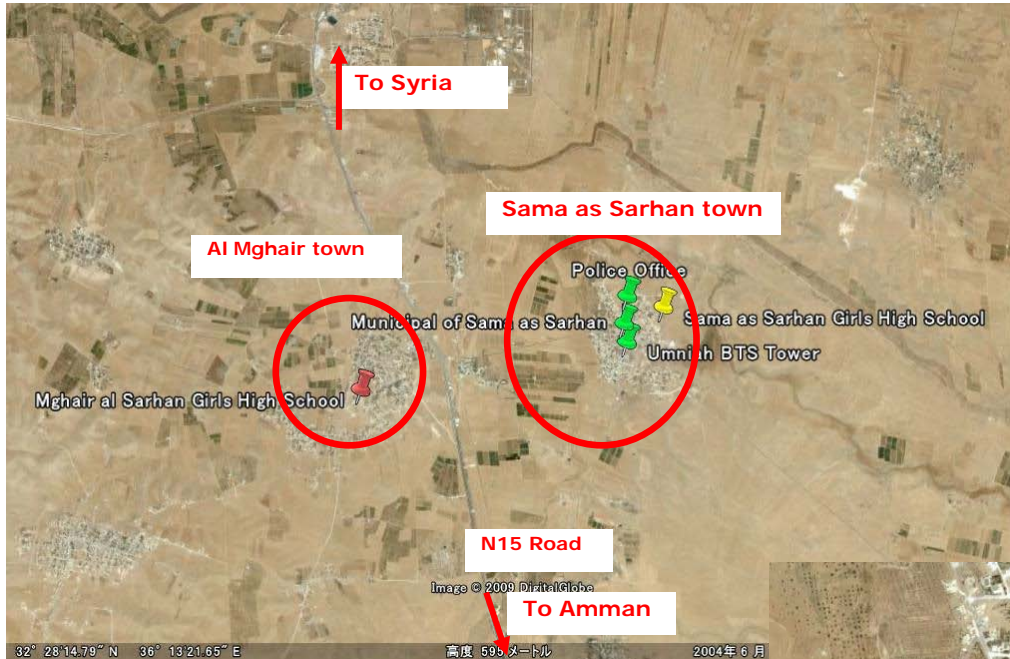
- Sama As Sarhan
- Al Quwayra

Tunisia (2 sites)

- Louata LS
- Sidi Jdidi LS



Sama As Sarhan



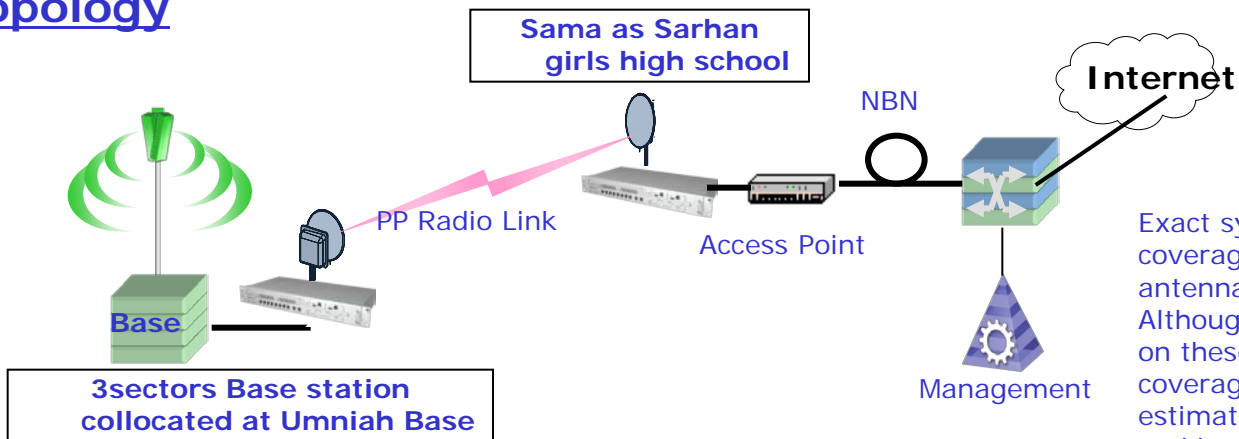
Location map of Sama as Sarhan municipal district

Sama as Sarhan town and facility locations



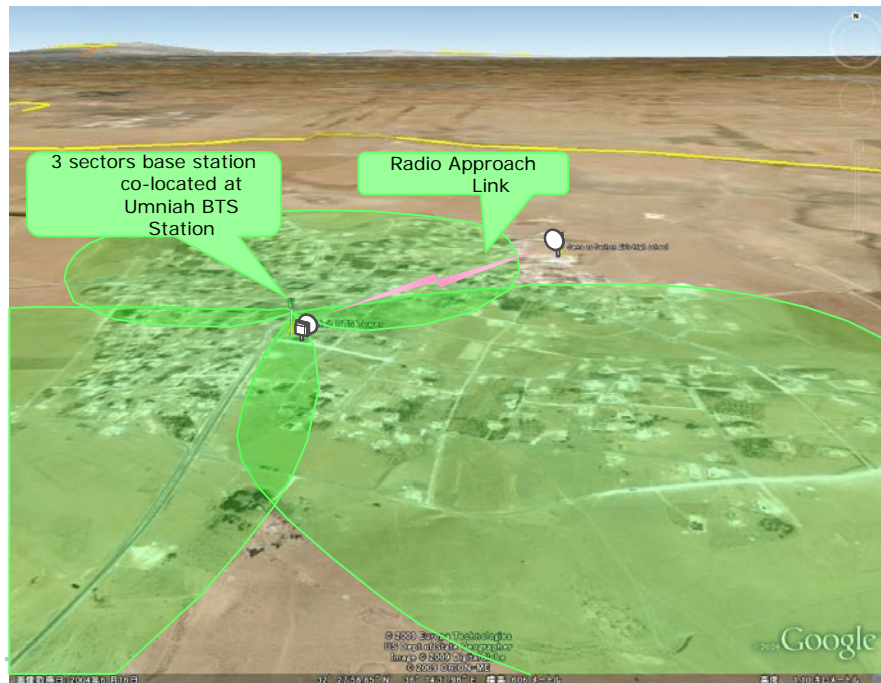
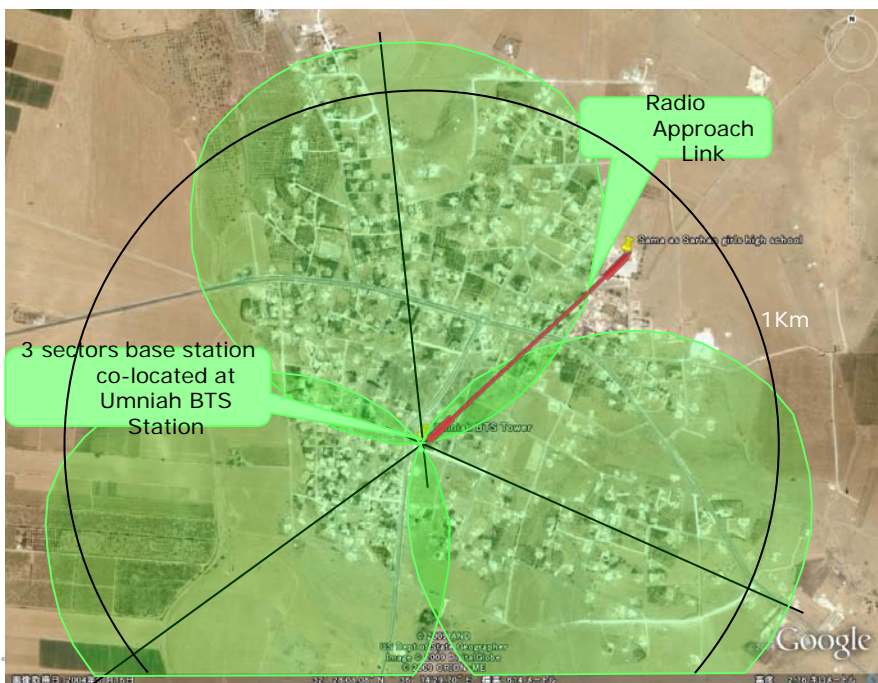
BWA system image at Sama as Sarhan (Ref. only)

BWA network topology

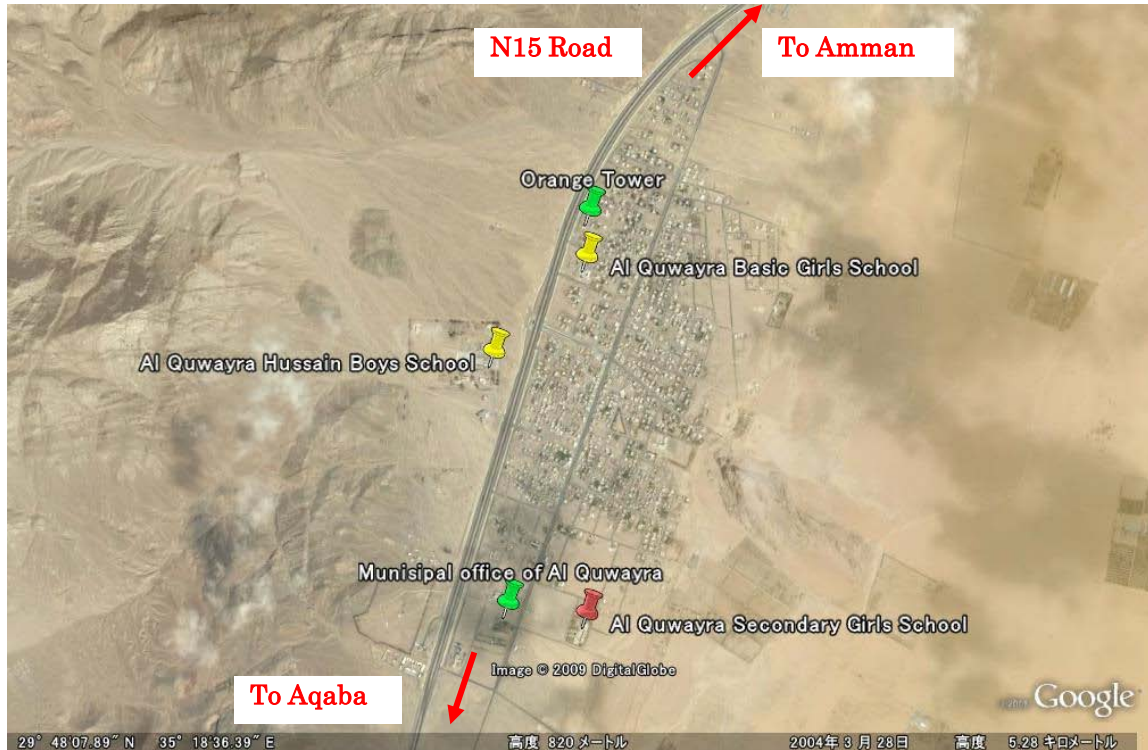


Exact system configuration and coverage depend on equipment and antenna height to be used. Although coverage depends heavily on these parameters, actual coverage might be larger than estimated because of flat terrain and less obstacles.

BWA Coverage image

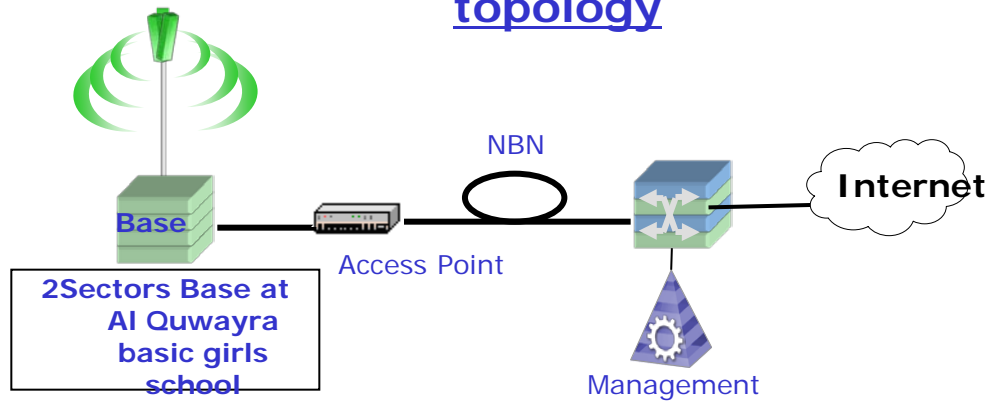


Al Quwayra



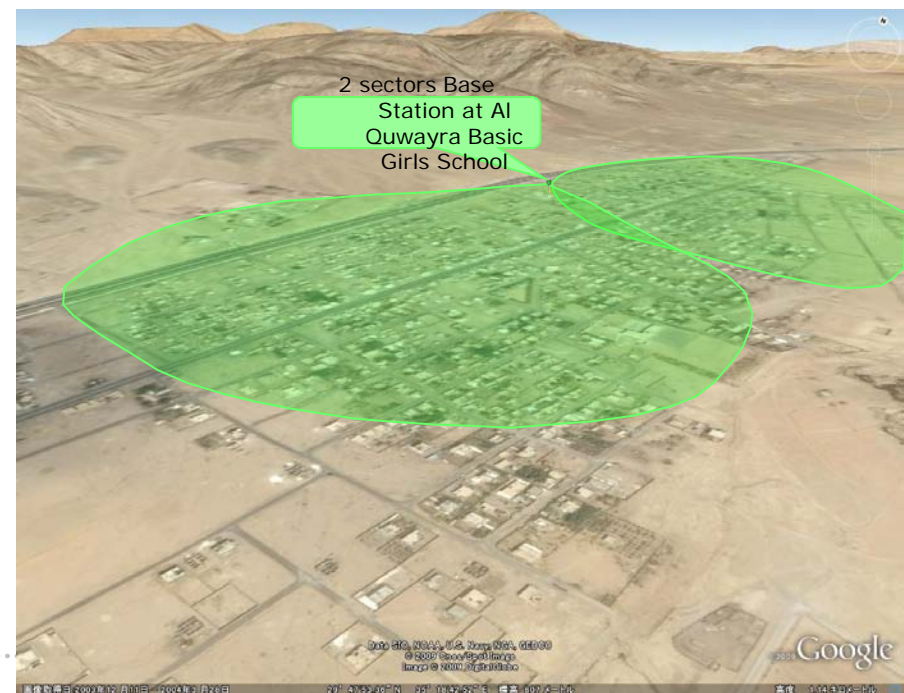
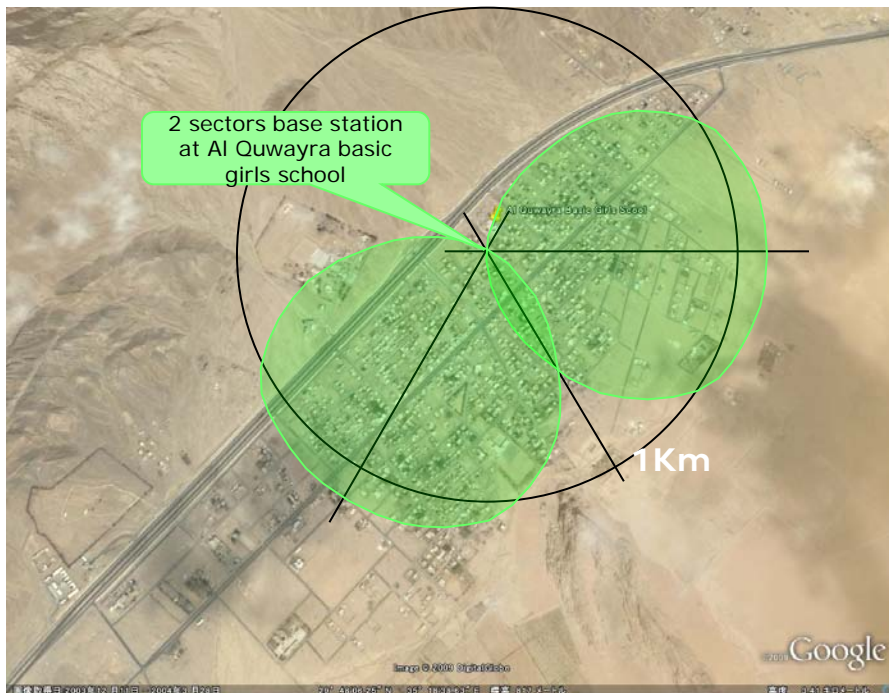
BWA system image at Al Quwayra

BWA network topology



Exact system configuration and coverage depend on equipment and antenna height to be used. Although coverage depends heavily on these parameters, actual coverage might be larger than estimated because of flat terrain and less obstacles.

BWA Coverage image

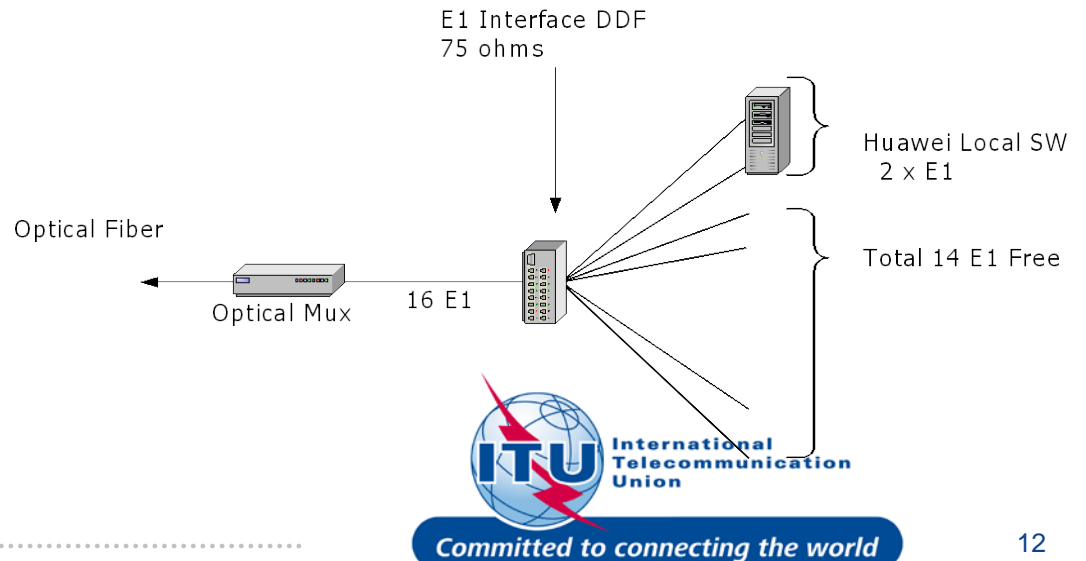


Louata LS



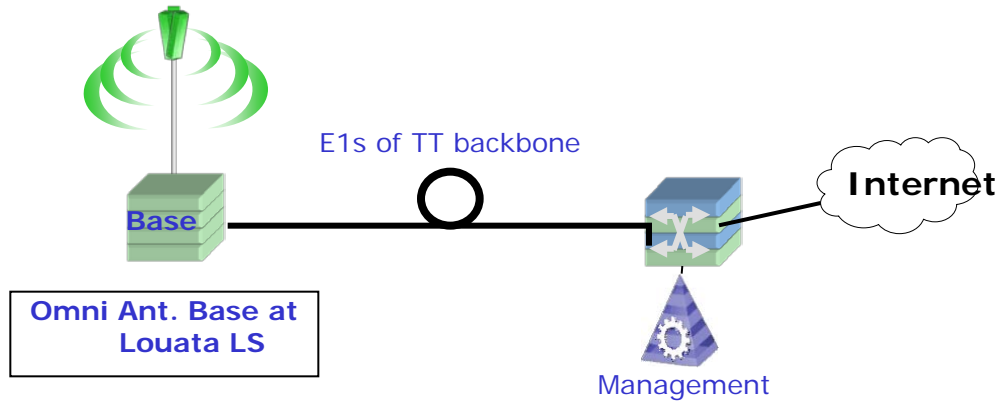
Louata LS and GSM WLL sites location

Louata LS configuration



BWA system image at Louata

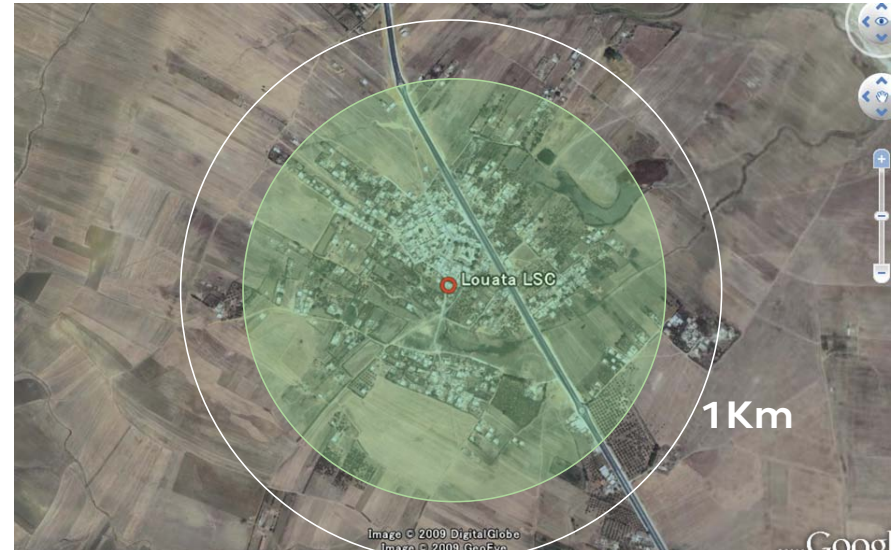
BWA network topology



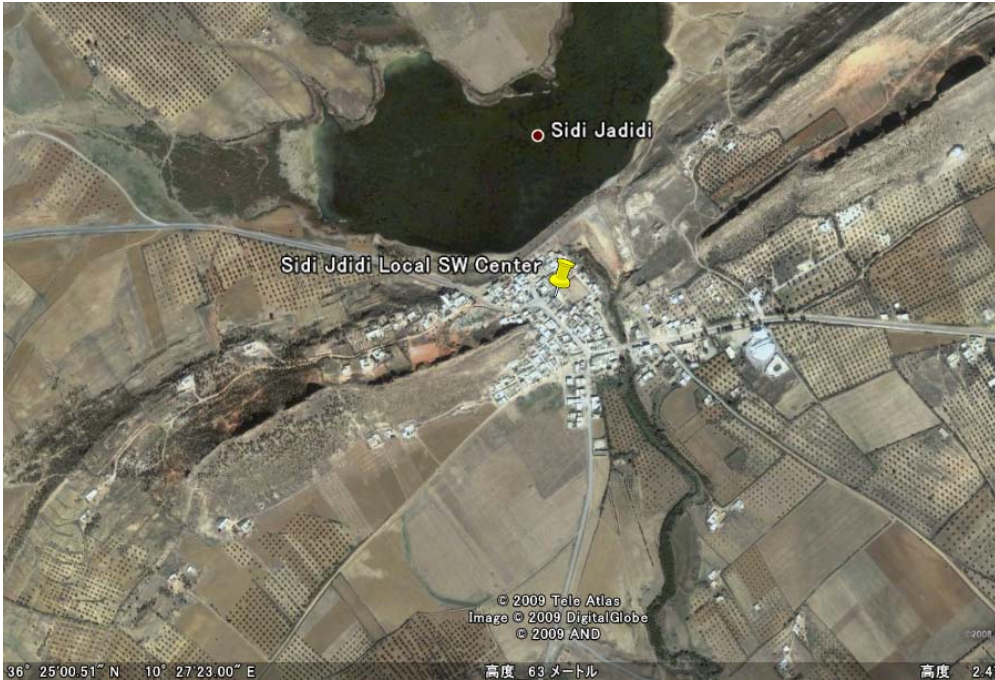
Antenna tower image



BWA coverage image

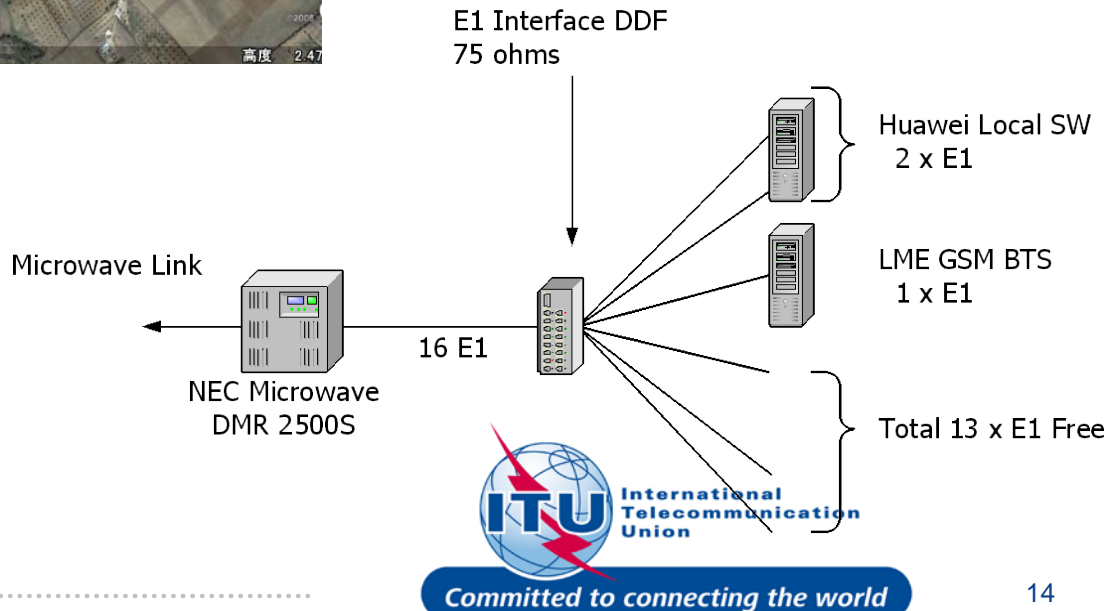


Sidi Jdidi LS



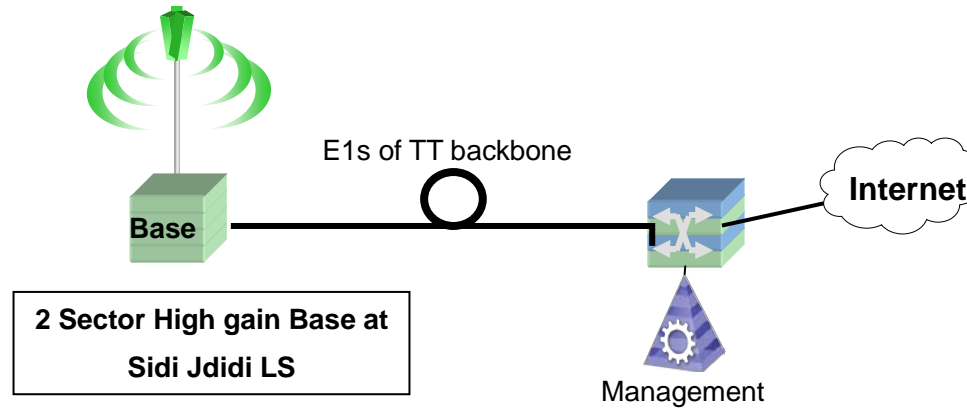
Sidi Jdidi LS location

Sidi Jdidi LS configuration



BWA system image at Sidi Jdidi

BWA network topology



BWA coverage image

Work Plan

PERT																																												
Project Evaluation & Review Table																																												
ID	Activities	Pre	D	2010						2011										2012										2013														
				days	M0	M1	M2	M3	M4	M5	M6	M7	M8	M9	M10	M11	M12	M13	M14	M15	M16	M17	M18	M19	M20	M21	M22	M23	M24	M25	M26	M27	M28	M29	M30	M31	M32	M33						
0	Recruitment of Experts	N	60	█	█																																							
1	Development of detail network design with necessary coordination at	0	180			█	█	█	█	█	█																																	
2	Recruitment of Experts (if necessary)	N	60																																									
3	Preparation for Field Trial	2	180																																									
4	Preparation of equipment	1	90																																									
5	Shipping of Equipment	4	90																																									
6	Installation and Commissioning	5	90																																									
7	Pilot system operation and Monitoring	6	90																																									
8	collection data from users for impact assessment	7	30																																									
9	Analysis and Study	8	120																																									
10	Review	9	90																																									
11	Reporting and Closing	10	10																																									



Future Work

- **Considering available budget which will be contributed from MIC,**
 - **Conduct thorough coordination with beneficiary countries (Jordan and Tunisia), MIC and possible partners,**
 - **Adjust project deployment scale and amend the project documents for pilot project,**
 - **Finalize the project documents for implementation of pilot project,**
 - **Implement the pilot projects under agreement between ITU and MIC**



Thank You



Committed to connecting the world